

### Two Handles Bathroom Faucet

product is cUPC, NSF-61, NSF 372, AB1953, CEC,  
WaterSense certified by IAPMO R&T.

ASME A112.18.1/CSA B125.1

### RECOMMENDED TOOLS



Adjustable Wrench



Channel Locks



Goggles



Teflon tape



Screwdriver

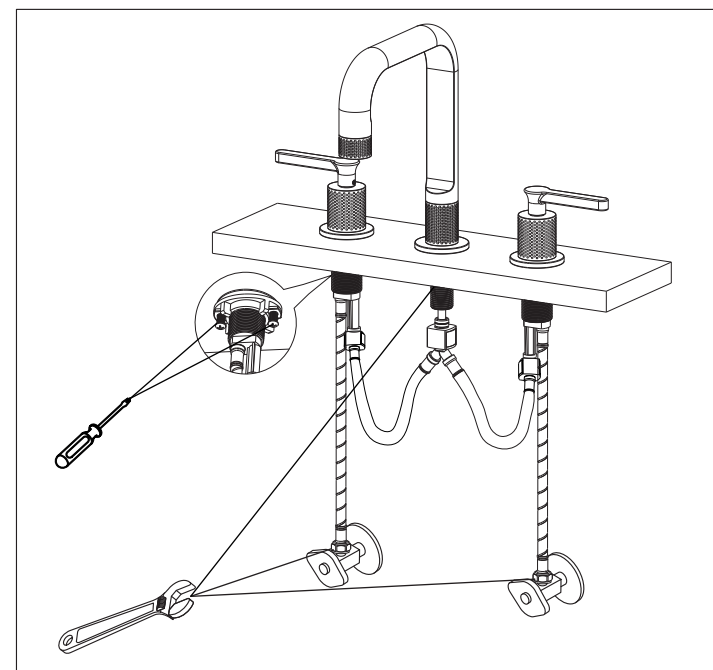


Allen key



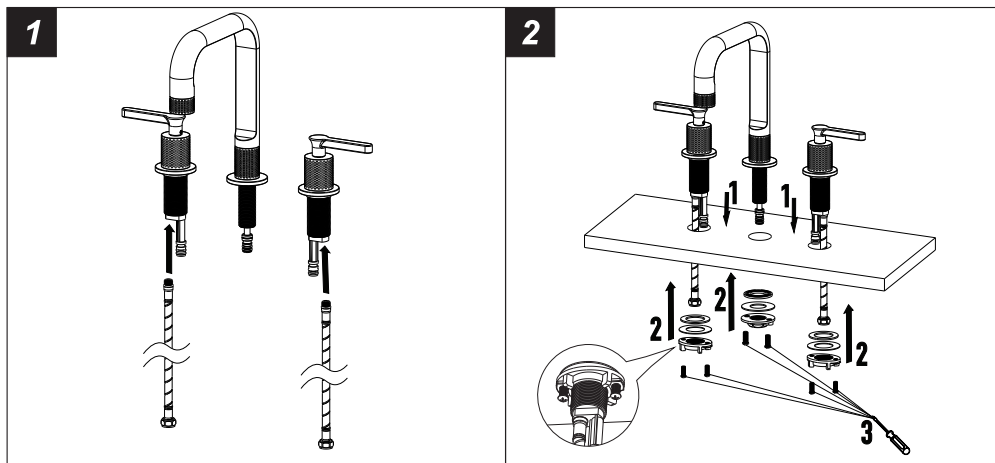
Attention:  
for easy installation, you will need:  
1.To read all the installation instruction completely before beginning.  
2.To read all the warning, attention and maintenance information.  
3.To purchase the proper supply lines.

The tools might be applied to the following places:



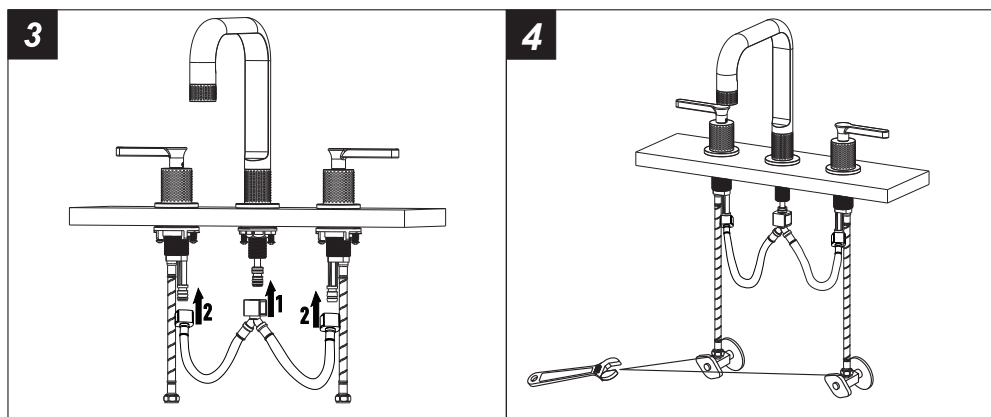
| NO. | Description   | NO. | Description         |
|-----|---------------|-----|---------------------|
| 1   | Screw         | 15  | Ring                |
| 2   | Handle        | 16  | Spout               |
| 3   | Handle Cup    | 17  | Spout Cup           |
| 4   | Cartridge     | 18  | O-Ring              |
| 5   | Lower Ring    | 19  | Inlet pipe Assembly |
| 6   | O-Ring        | 20  | Lower Ring          |
| 7   | Spool body    | 21  | Coop                |
| 8   | Ring          | 22  | Washer              |
| 9   | Gasket        | 23  | Gasket              |
| 10  | Lock Nut      | 24  | Nut                 |
| 11  | Screw         | 25  | Supply hose(Hot)    |
| 12  | O-Ring        | 26  | Supply hose(Cold)   |
| 13  | Aerator Cover | 27  | Y-pipe              |
| 14  | Aerator       |     |                     |

## Step 1 Faucet installation



- 1.1 Shut off water supply.
- 1.2 Flush water connection at home to make sure no debris is stuck in the line.
- 1.3 Connect flexible hose to brass pipe for hot and cold handles assemblies.

- 2.1 Place handle and spout assemblies in position on the countertop.
- 2.2 From under the sink, put rubber washer, metal ring and brass nut onto each threaded pin. Tighten nuts.
- 2.3 Use a screwdriver to tighten each screw.



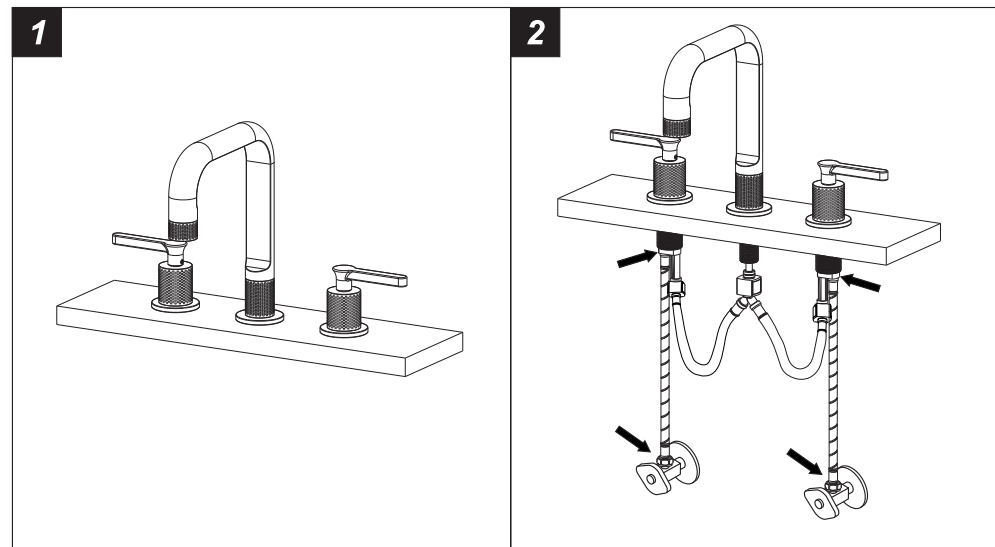
- 3 Attach ends of quick connection hose to hot and cold assemblies.
4. Connect the flexible hoses to water supply valve (not included) and copper tubes, and tighten it with adjustable wrench. **DON'T OVER TIGHTEN!**

Caution: make sure connect the hot and cold flexible hose to supply valves correctly.



Warning: The supply valves are not included, please purchase them in plumbshop

## Step 2 Checking and testing



1. Turn the faucet handle all the way on, turn on hot and cold water supply and flush water lines for one minute.
2. Check all connections at arrows for leaks, re-tighten it if necessary.



**BUT DON'T OVERTIGHTEN**

## Step 3 Cleaning and care

Daily cleaning and care are required in order to keep the product shining and properly working.

- 1 Clean it with water and dry it with soft cloth.
- 2 Clean the product with gentle liquid or glass cleaner.
- 3 Don't use acid cleaner.
- 4 Don't clean with abrasive material, abrasive paper or knife.