

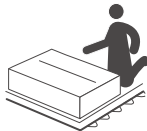
Bathroom Vanity

Notice:

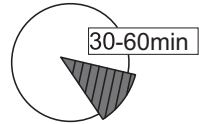
- 1. Follow the installation instructions. Please confirm all accessories are preset before installation.
- 2. Do not fully tighten the screws during initial assembly. Fully tighten screws only once all pieces which are correctly assembled.
- 3. If you encounter any problems during installation, please contact our customer service.
- 4. Please unbox the item from the side with an open-label and put a carpet on the floor to avoid scratching it.



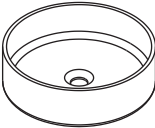
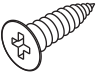
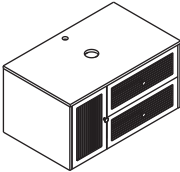
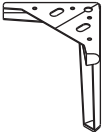
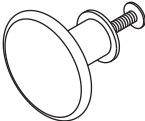
Recommended installers : 2

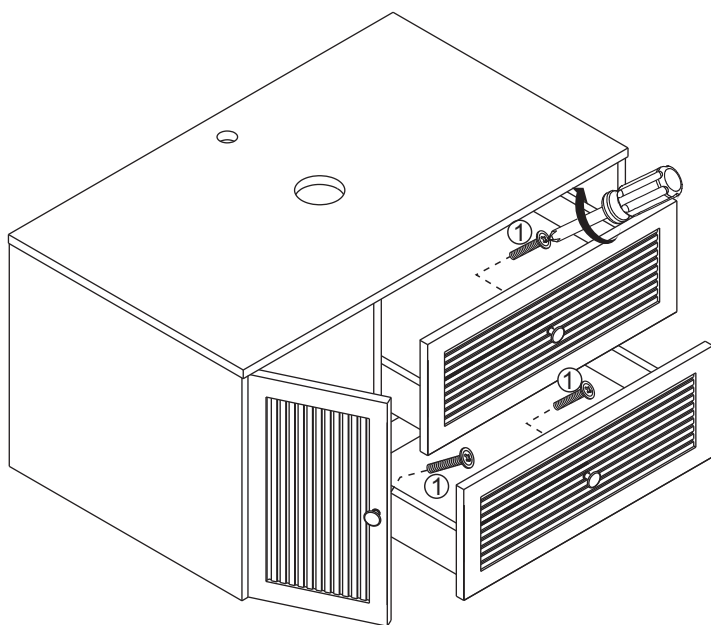
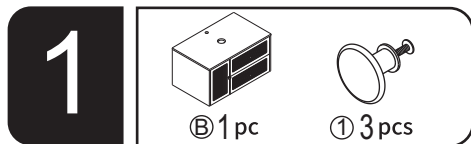


Put a carpet on the floor before unpacking

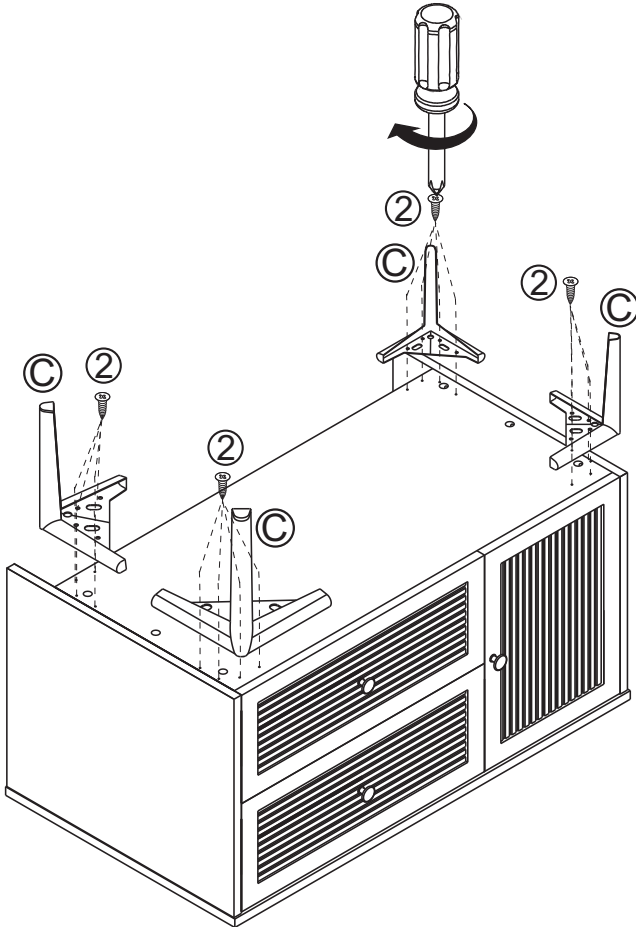
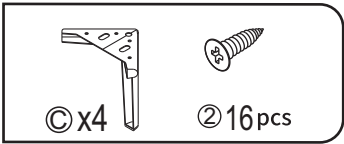


Estimate installation time:  
30 minutes

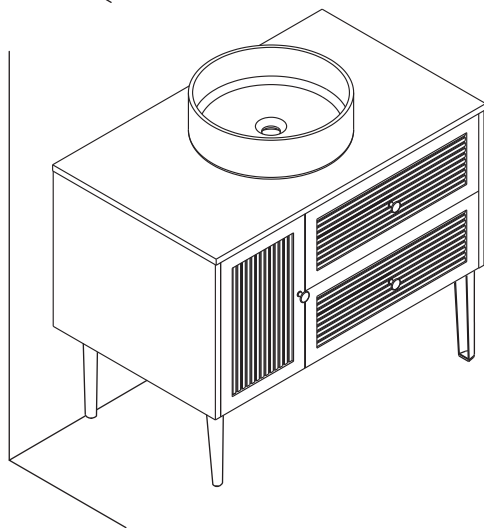
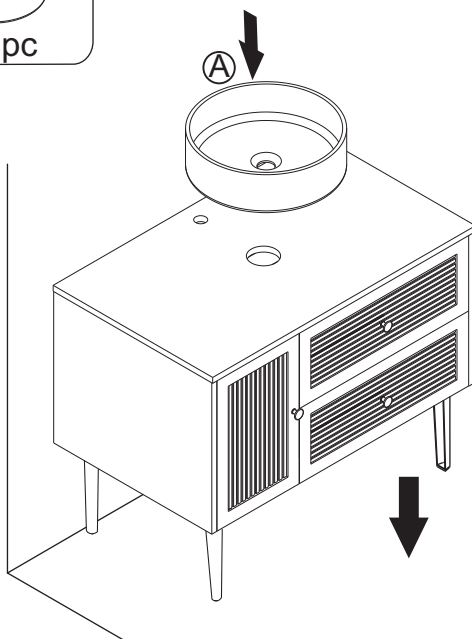
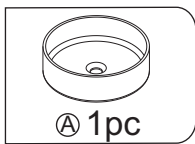
Item no.	Reference Image	Qty	Item no.	Reference Image	Qty
A		x1	2	 Ø3.5x14mm	x16
B		x1	3		
C		x4			
1		x3			



2



3



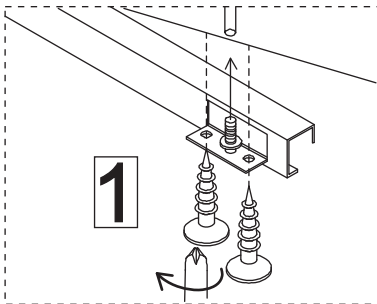
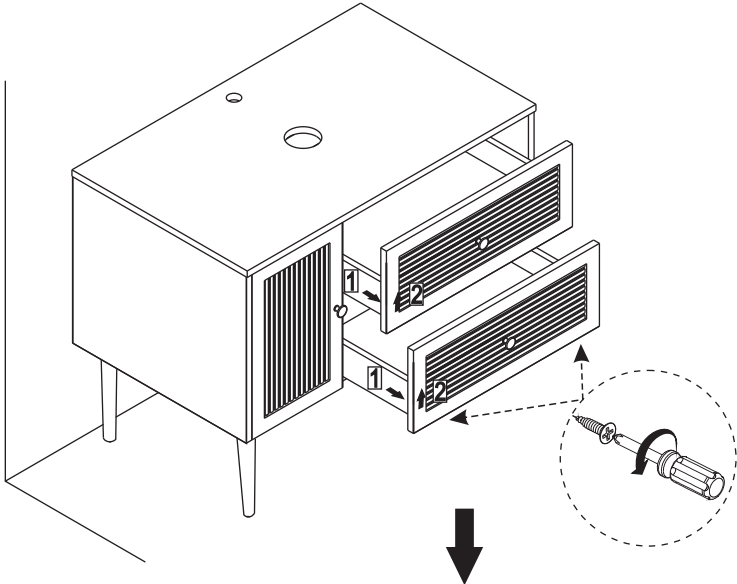
Installation completed

## ASSEMBLY INSTRUCTIONS

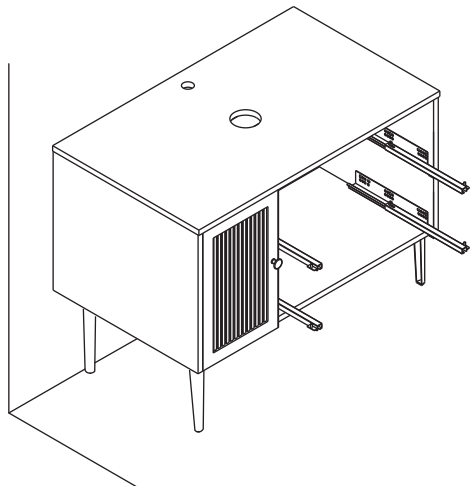
4

### Installation of drain assembly

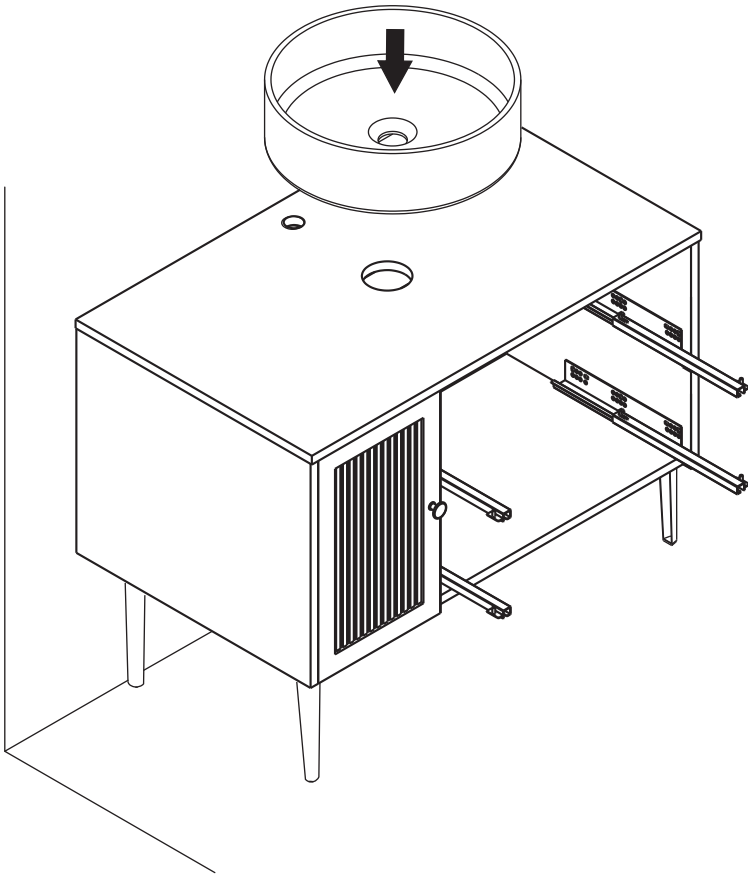
Turn the screw at the bottom of the guide rail counterclockwise!



Move out the drawer



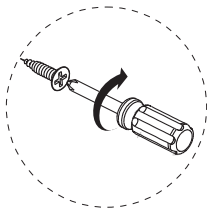
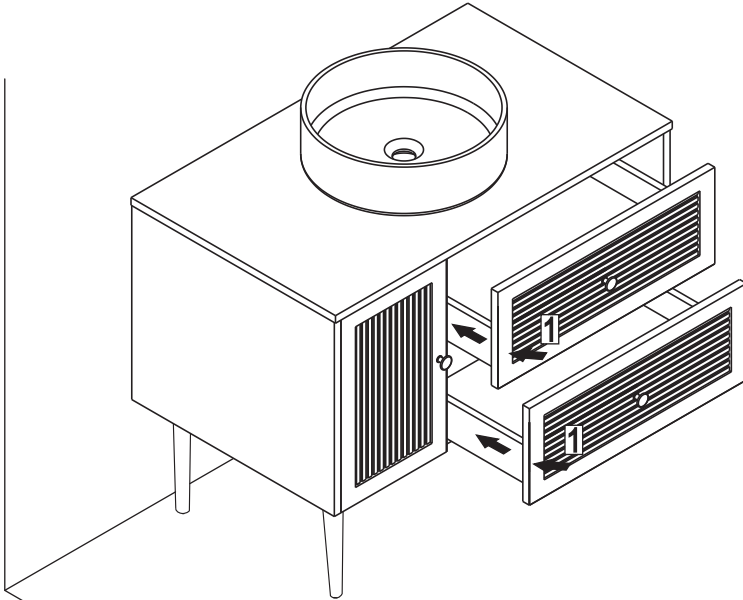
5



Installation of drain assembly

# ASSEMBLY INSTRUCTIONS

6



Installation completed

