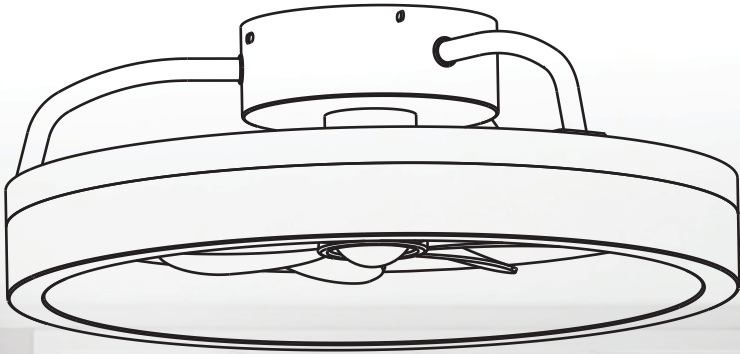


OWNER'S MANUAL

CEILING FAN LIGHT SHINE YOUR LIFE



7867/7873/7611/7870/7871 RGB

CONTACT INFORMATION

Feel free to reach out to us if you encounter any issue when using our products.

Email: uroadmin@urogoo.com

Phone: (657)384-1547



WARNING

- For your safety, please entrust a professional person to install.
- For your safety, please wear gloves during installation.
- To avoid risk of electric shock, be sure to shut off power at the main fuse or circuit breaker box before installing or servicing this fixture. Turning off the electrical power by using the light switch is not sufficient to prevent electrical shock.
- All power supply shall not exceed the specified range (rated voltage DC110V/DC265V, 50Hz, Support global voltage standard, can convert your country's standard voltage).
- Do not install lamps in the unstable ceiling or open air.
- In order to ensure safety, if there is any problem with lamps, please entrust professional personnel to carry out maintenance.
- Before installation, the whole lamp shall be tested for lighting, and the appearance of the lamp shall be checked for damage.

Tools Needed



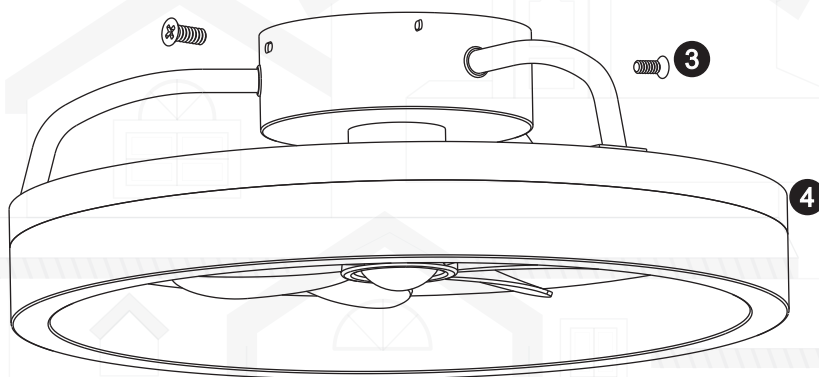
1



2



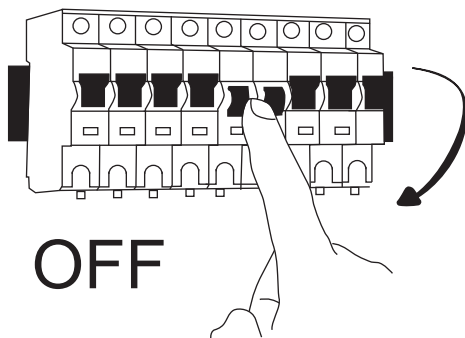
5



4

1. Tapping screw 2. Round hanging plate 3. Hanging plate screws
4. Lighting and fan 5. Remote control

①



Failure to disconnect the power supply prior to installation may result in serious injury or death.
For a full description of the precautionary measures and warnings, please see the safety precautions page.

1. Punch holes in the ceiling with an impact drill, and then install expansion screws.
(Figure 1)

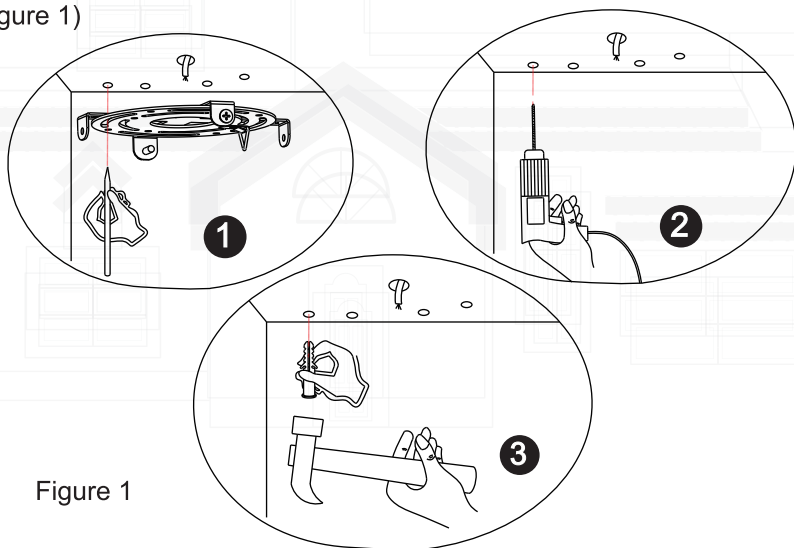


Figure 1

2. Install the ceiling hanging plate, and then screw it down.(Figure 2)

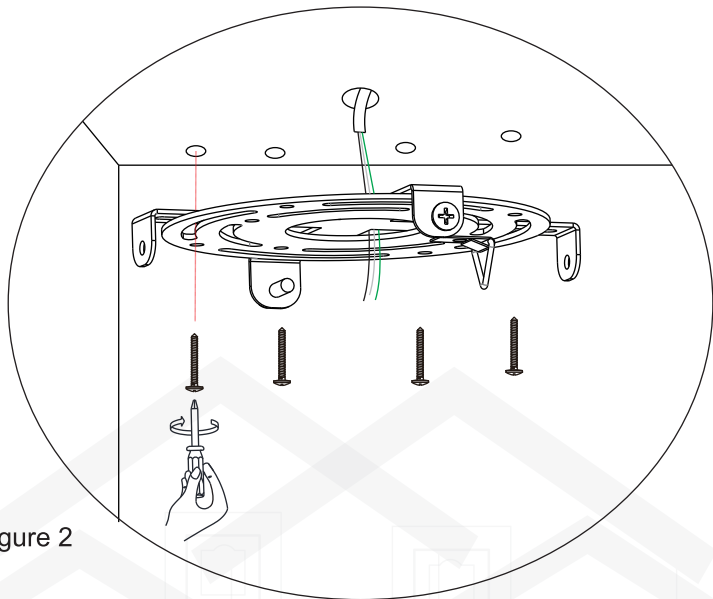



Figure 2

3. Hook the lamp body with the self-provided safety hook to prevent the lamp from falling, and then connect the power cord. (Figure 3)

(L-Live; N-Neutral;  -Earth)

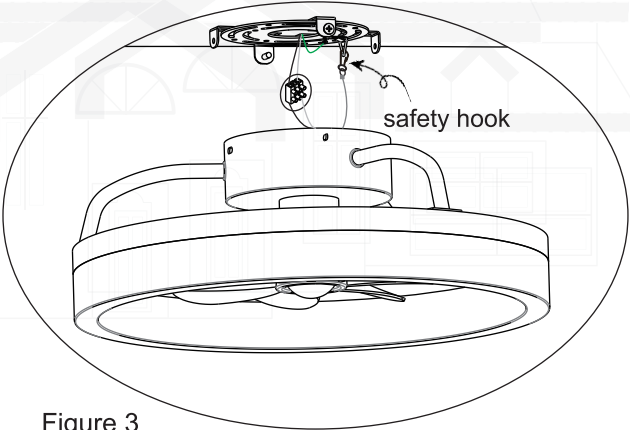
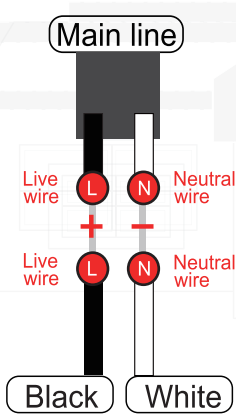


Figure 3

4. Install the lamp body on the upside- down board (Figure 4)

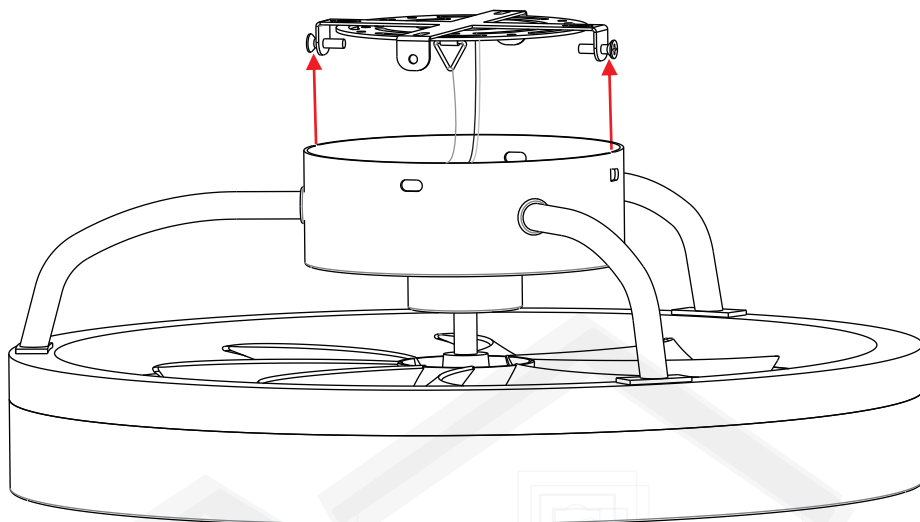


Figure 4

5. Lock the hanging plate and the lamp body together with screws to prevent falling.(Figure 5)

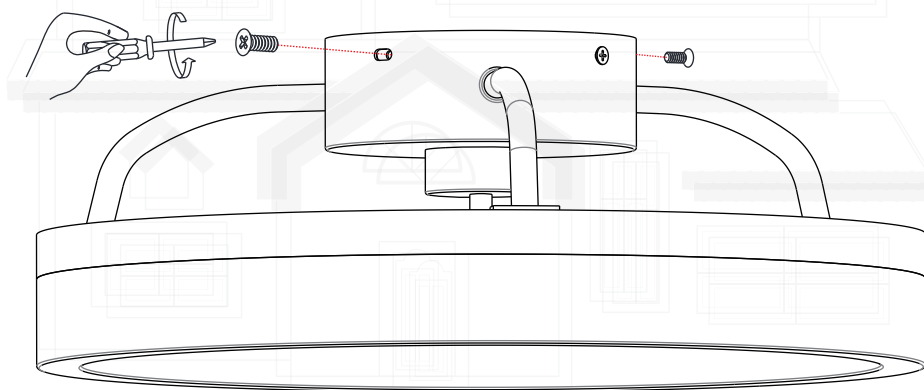
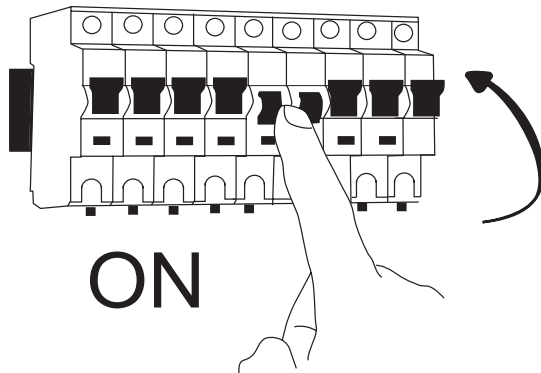
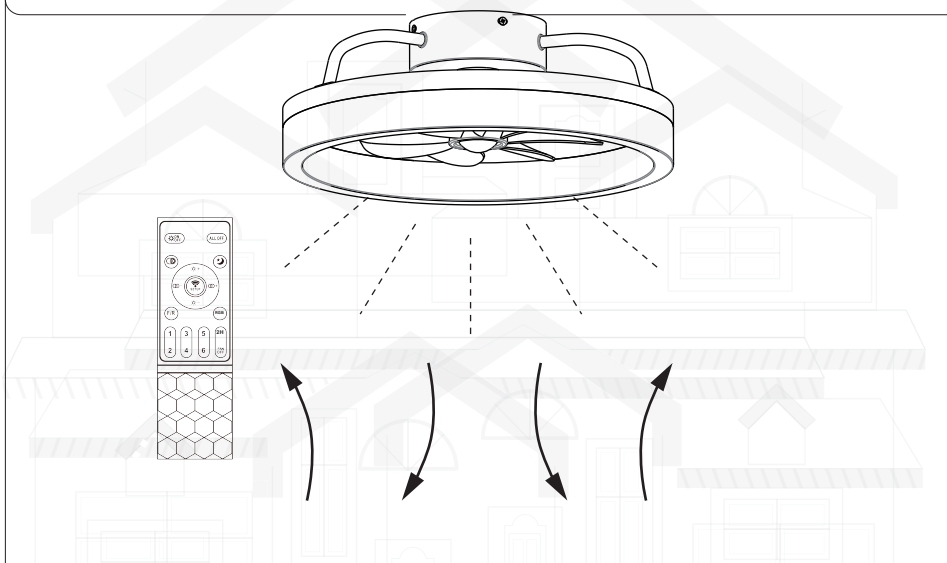


Figure 5

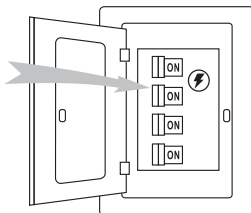
Turn on the power



Test the fan and lighting.



Installation is now finished . Turn on the power switch. Then the fan lights are on Test and pair your fan immediately using the remote control



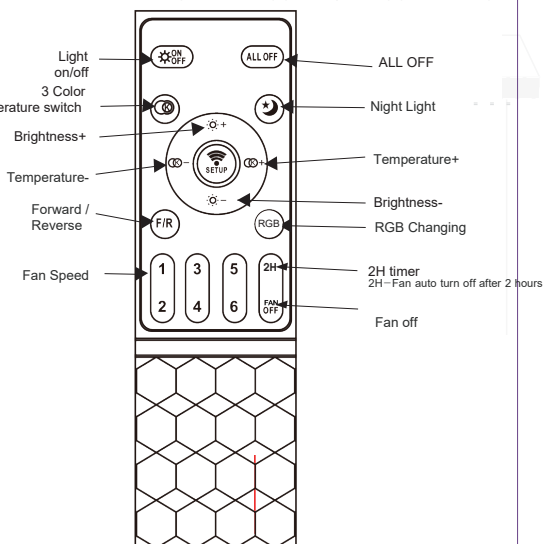
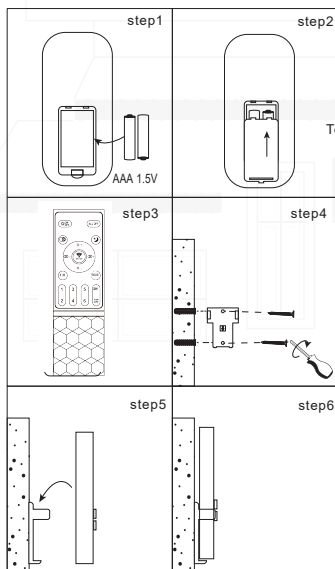
REMOTE CONTROL SETTING AND OPERATION

1. Restore electrical to the outlet box by turning the electricity on at the main fuse box.
2. Remove the battery cover from the remote control, install the battery and the cover.

Note:

- 1). Use AAA 1.5V battery to replace battery.
- 2). If not using for long periods of time, remove the battery to prevent damage to the remote transmitter, and store the remote transmitter away from excess heat or humidity.
3. The buttons on the remote control transmitter control the fan speed and light as follows.

Remote Control Operation



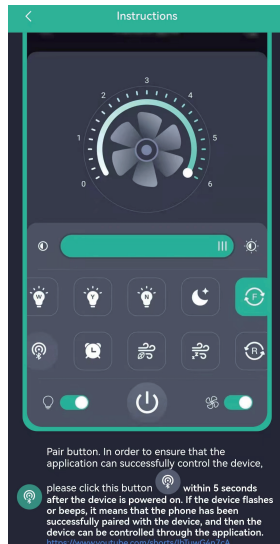
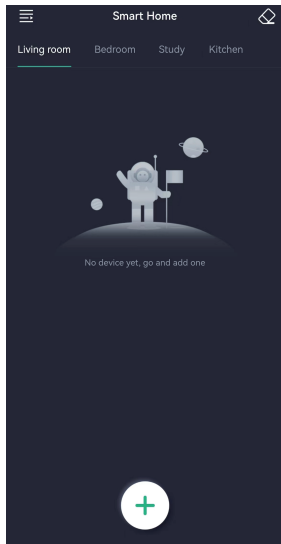
APP Instructions



Method of connecting APP



Scan QR code and download APP
Support IOS and Android



Note

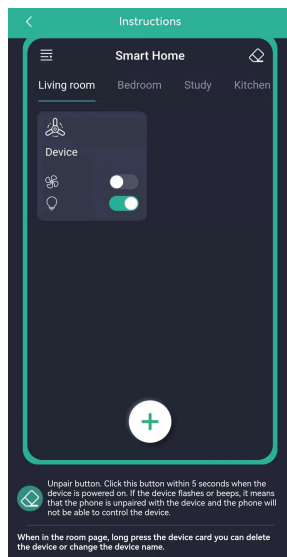
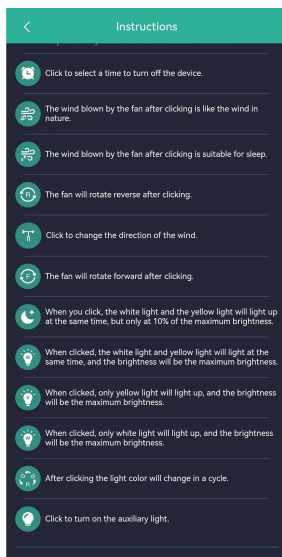
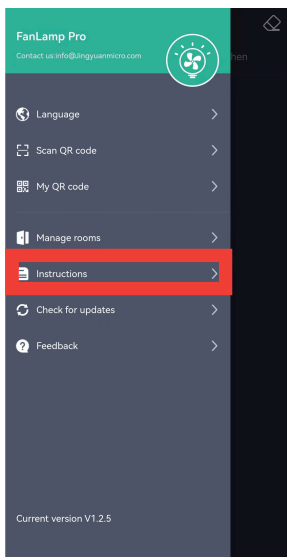
Note: If your APP interface is displayed in Chinese, click the menu in the upper left corner to switch languages.

Step 01

Step 1: Click "+" button to set the name of your fan light. And then turn on the Bluetooth.

Step 02

Step 2: Click the pair button 1-2 times within 5 seconds after the fan is powered on. If the fan light flashes or beeps, it means the phone has been successfully paired.



Instruction 01

Click the "Instructions" you can see the introduction of all the buttons.

Instruction 02

Instruction 03

WARNING

For your own safety turn off power at fuse box or circuit breaker before trouble shooting.

Trouble	Probable Cause	Suggested Remedy
1.FAN WILL NOT START	<ol style="list-style-type: none"> 1. Fuse or circuit breaker blown. 2. Loose power line connections to the fan, or loose switch wire connections in the switch housing. 3. Dead battery in remote control. 4. Reversing switch in neutral position. 	<ol style="list-style-type: none"> 1. Check main and branch circuit fuses or circuit breakers. 2. Check line wire connections to fan and switch wire connections in the switch housings. CAUTION: Make sure main power is turned off ! 3. Replace with new battery. 4. Make sure reversing switch position is all the way to one side.
2.FAN SOUNDS NOISY	<ol style="list-style-type: none"> 1. Loose screws in motor housing. 2. Wire connectors inside housing rattling. 3. Motor noise caused by solid state variable speed control. 	<ol style="list-style-type: none"> 1. Check to make sure all screws in motor housing are snug (do not overtighten). 2. Check to make sure wire connectors in switch housing are not rattling against each other or against the interior wall of the switch housing. CAUTION: Make sure main power is turned off ! 3. Some fan motors are sensitive to signals from solid-state variable speed controls. Solid-state controls are not recommended, choose an alternative control method.
3.FAN WOBBLER EXCESSIVELY	<ol style="list-style-type: none"> 1. Setscrew in downrod support is loose. 2. Setscrew in downrod/hanger ball assembly is loose. 3. Hanger bracket and/or ceiling assembly, outlet box is not securely fastened. 	<ol style="list-style-type: none"> 1. Tighten both setscrews securely in downrod support. 2. Tighten the setscrew in the downrod/hanger ball . 3. Tighten the hanger bracket screws to the outlet box, and secure outlet box.

Dear Customer:

This product from the date of purchase, free warranty 1 year. If the product has been misused, damaged by accident or in any other way of improper use, this warranty becomes void. If you have any problem in using the product, please feel free to contact us, after-sales email address is:

shangweishengdeng@163.com

Your satisfaction is our purpose of service.





Email: uroadmin@urogoo.com

Phone: (657) 384-1547

MADE IN CHINA