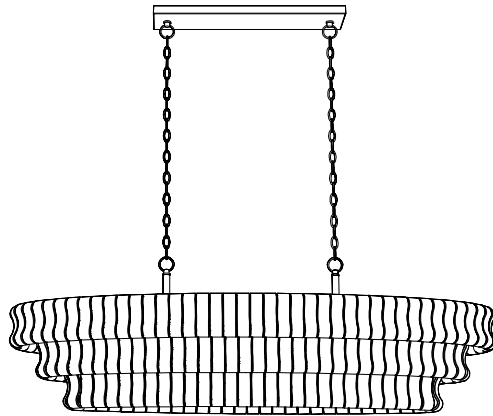
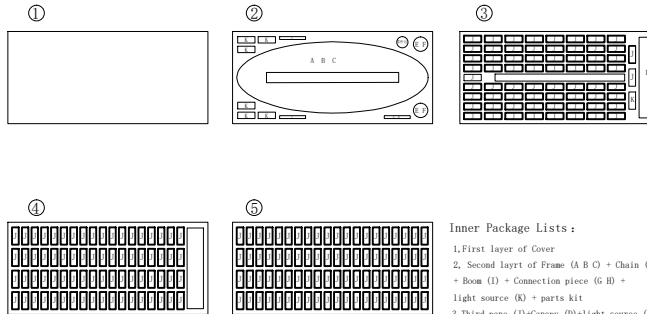
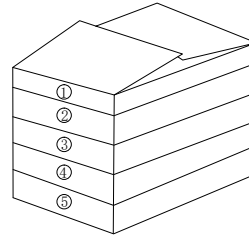


YIOSI® lighting Installation Manual



Package Display



Inner Package Lists :

1. First layer of Cover
2. Second layer of Frame (A B C) + Chain (E F) + Boom (I) + Connection piece (G H) + light source (K) + parts kit
3. Third pane (J) + Canopy (D) + light source (K)
4. Fourth layer of Glass Pane (J)
5. Fifth layer of glass pane (J)

Before Installation:

- ★ Please read all the instruction steps carefully.
- ★ Keep the instructions for future reference.
- ★ Separate and list all parts and hardware.
- ★ Read each step carefully and follow the correct installation sequence.
- ★ To avoid losing fittings during the assembly process, we recommend that you do not move the fixture until you have completed the assembly work and always place the product on a flat, firm, stable surface.
- ★ Keep all small parts and packaging materials of this product away from infants and children as they may cause serious injury.

Product parameters:

Socket: E12*6PCS Wattage: 3W/Bulb Color Temperature: 3000K



Installation Video and Product Link:

YouTube URL: <https://www.youtube.com/watch?v=0dcVZef12nI>

Scan QR Code:

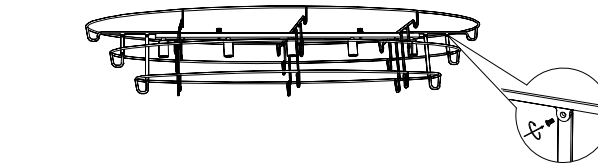
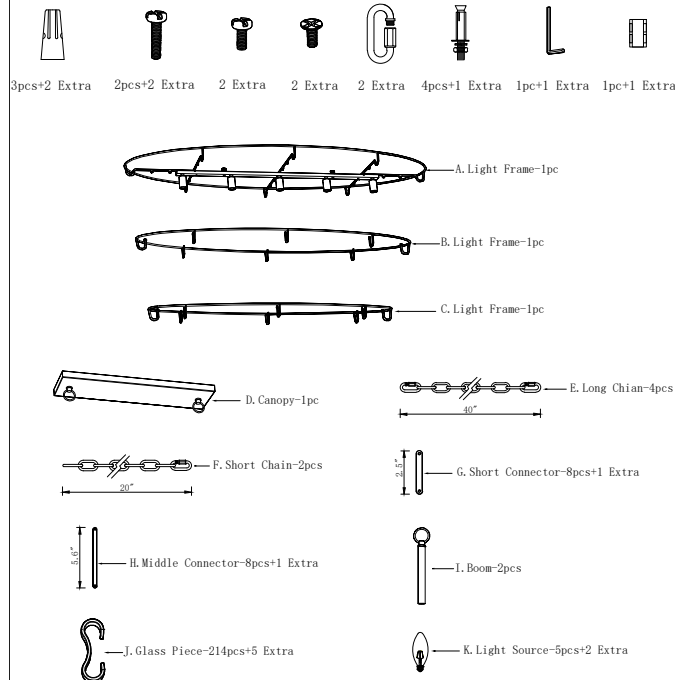


Chandelier Installation and Safety Standards

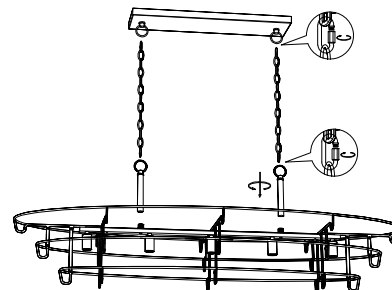
The installation of a chandelier is a crucial step in ensuring its safety. chandelier safety standards dictate the process of installation, including the tools and equipment that can be used, the methods of securing the chandelier, and the location of the chandelier

Securing the chandelier is a crucial step in the installation process. Chandelier safety standards dictate that the chandelier must be securely attached to a suitable support, such as a ceiling joist, to prevent it from falling. This includes ensuring that the support is strong enough to bear the weight of the chandelier, and that the chandelier is properly balanced to prevent it from tipping or swaying

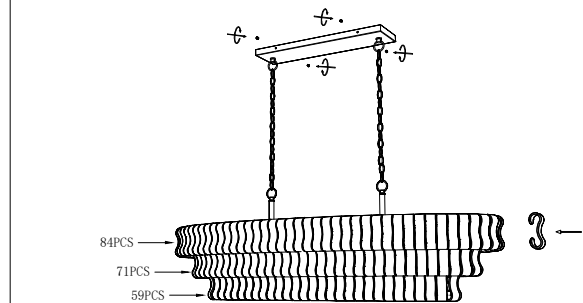
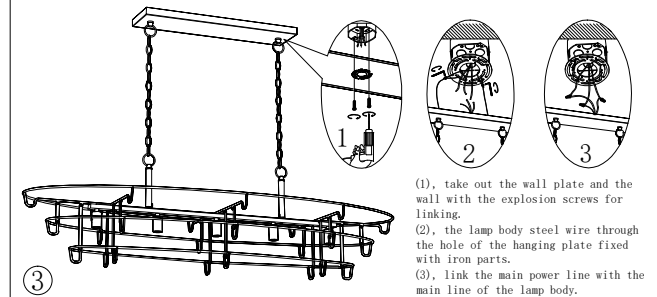
Furthermore, the chandelier must be secured using suitable hardware, such as screws or bolts, that are strong enough to bear its weight. The hardware must be properly installed and tightened to ensure that the chandelier is securely attached. Regular inspections of the hardware are also necessary to detect and repair any damage or wear promptly.



- ① Find FrameA FrameB FrameC from Lists, Use ConnectorG ConnectorH to connect the Frame.



- ② The wire is mounted on the light body through the boom (I), the two ends of the hanging chain lock connects the boom (I) and the canopy (D), and the power cord is inserted into the canopy(D) on the top of the light body.



- ③ (1), Install the lamp body on the wall plate.
- ④ (2), Screw 5pcs E12 light source into the lamp head.
- (3), the glass pieces are hung on the lamp body according to the number labeled for each layer.