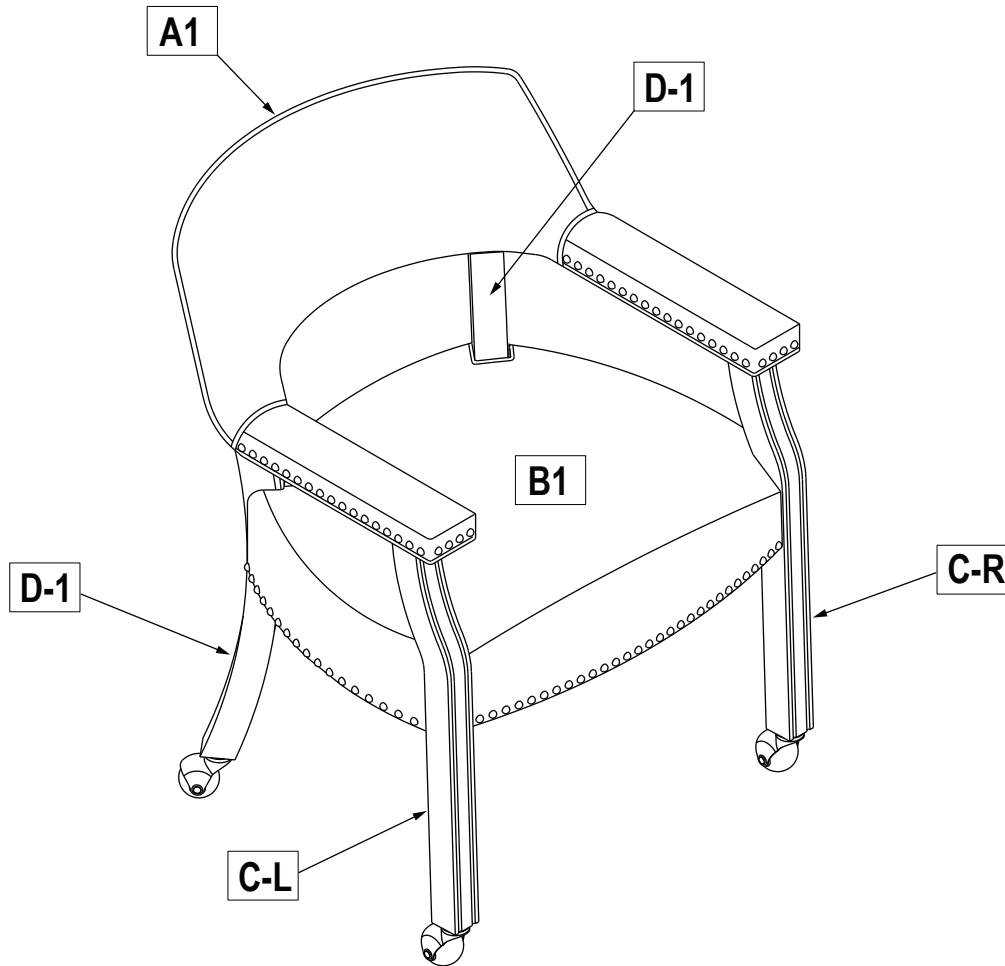


# ASSEMBLY INSTRUCTIONS:

## 6575 GAME CHAIR



**Pre-Assembly Tips:** To ensure that your chair is assembled correctly and sits evenly on the floor, please follow these tips:

1. **Do Not Fully Tighten Screws Initially:** When inserting screws, it is crucial to finger tighten or loosely tighten them first. This step allows you to ensure all holes line up and the chair sits evenly.
2. **Check Alignment:** Before fully tightening the screws, turn the chair upright and gently place it on the floor. Check that all four legs are firmly touching the ground. If the chair wobbles or one leg is not touching, slightly loosen the screws and either add weight or sit in the chair momentarily to help settle the legs properly.
3. **Final Tightening:** Once the chair is stable and all parts are connected, carefully tighten all screws. This will ensure the chair remains level and sturdy.

# 6575 GAME CHAIR

Page 2 of 5

## ASSEMBLY INSTRUCTIONS

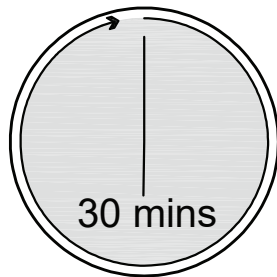
Read these instructions carefully and keep for future reference. Refer to parts inventory for guidance, and ensure you have all pieces before starting.

When assembling, place all parts on a soft, clean, and flat surface such as a carpet to prevent scratches.

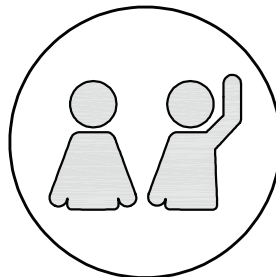
**If you're having difficulty, our friendly Customer Care team is always here to help. Call us at 1.336.861.0604 during business hours, email [parts@comfortpointe.com](mailto:parts@comfortpointe.com).**

Attention : Veuillez Lire Toutes Les Instructions Avant De Commencer L'assemblage De Ce Produit. Les Pièces Sont Lourdes. Pour Éviter Toute Blessure Et Pour Vous Assurer Que Le Produit N'est Pas Endommagé Pendant L'assemblage, Nous Vous Recommandons De Faire Appel À Une Ou Plusieurs Autres Personnes.

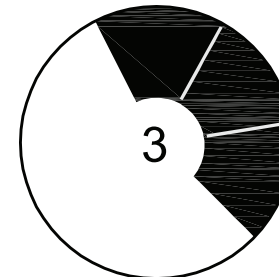
Cuidado: Favor De Leer Todas Las Instrucciones Antes De Ensamblar Su Producto. Estas Piezas Son Pesadas. Para Prevenir Heridas Personales Y Asegurar Que Su Producto No Sea Dañado Mientras Es Ensamblado, Se Recomienda La Asistencia De Una O Más Personas.



TIME



# OF PEOPLE



DIFFICULTY

**Important: Use hand tools for assembly. Power tools can lead to over-tightening and damage.**

# 6575 GAME CHAIR

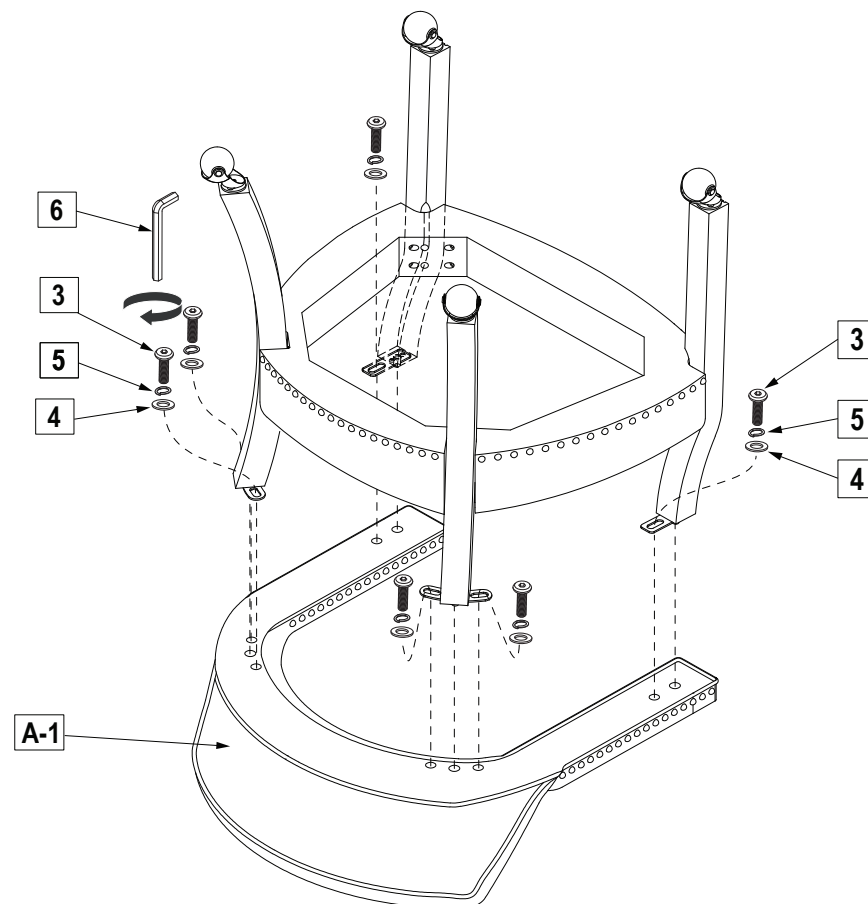
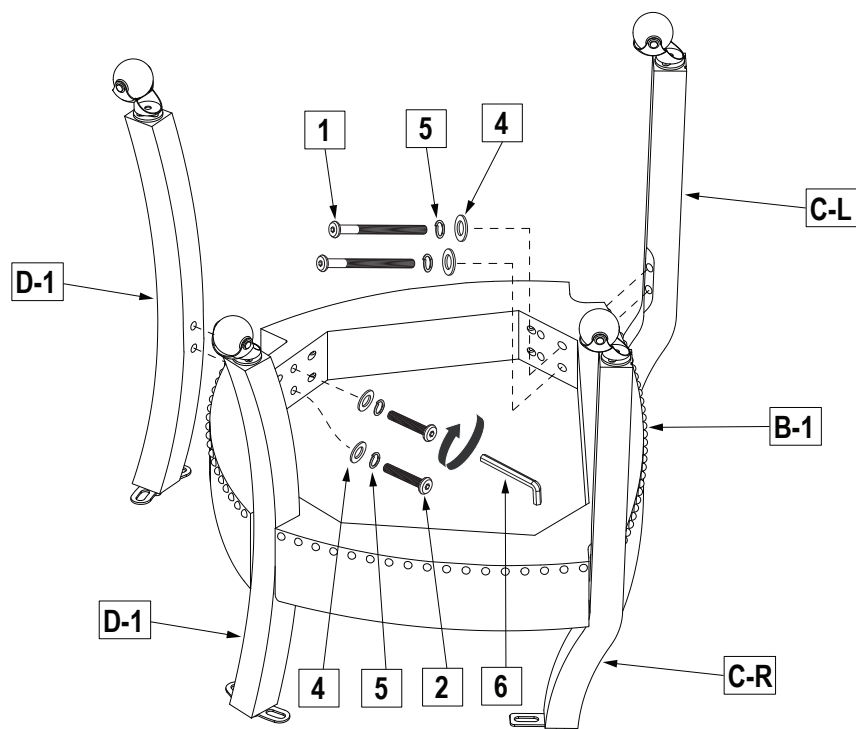
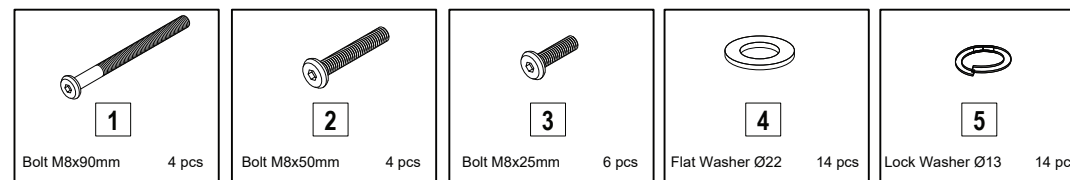
## Parts List

CODE	DESCRIPTION	QTY	CODE	DESCRIPTION	QTY
A-1	Chair Back	1 pc	C-L	Left Front Leg	1 pc
B-1	Seat Cushion	1 pc	C-R	Right Front Leg	1 pc
			D-1	Back Leg	2 pcs

Hardware List

CODE	DESCRIPTION	QTY	CODE	DESCRIPTION	QTY
1	Bolt M8x90mm	4 pcs	4	Flat Washer Ø22	14 pcs
2	Bolt M8x50mm	4 pcs	5	Lock Washer Ø13	14 pcs
3	Bolt M8x25mm	6 pcs	6	Allen Wrench	1 pc

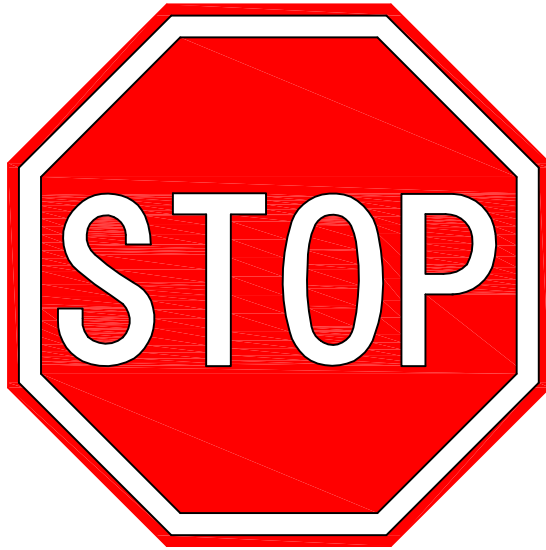
1



**Begin by attaching each leg to the seat following the diagram. Use the bolts provided, and remember to keep them loosely tightened as per the pre-assembly tips.**

**Once all parts are connected, proceed to tighten all screws securely.**

If you're having difficulty, our friendly Customer Care team is always here to help.  
Call us at 1.336.861.0604, email: [parts@comfortpointe.com](mailto:parts@comfortpointe.com).



**\*\*\*\*\*IMPORTANT MESSAGE\*\*\*\*\***

Please check to insure you have received all parts listed on the instruction sheet provided. If you did not receive all parts or received damaged parts please email or call the following:

Email : [Parts@comfortpointe.com](mailto:Parts@comfortpointe.com)

Phone : 336-861-0604 Contact : Parts Department

Office hours :

8am to 4pm EST Mon-Thur

8am to 3pm EST Friday

You will need to provide the item number purchased, your reference number, and identify which part is missing/damaged, all parts orders are considered priority.

Thank You