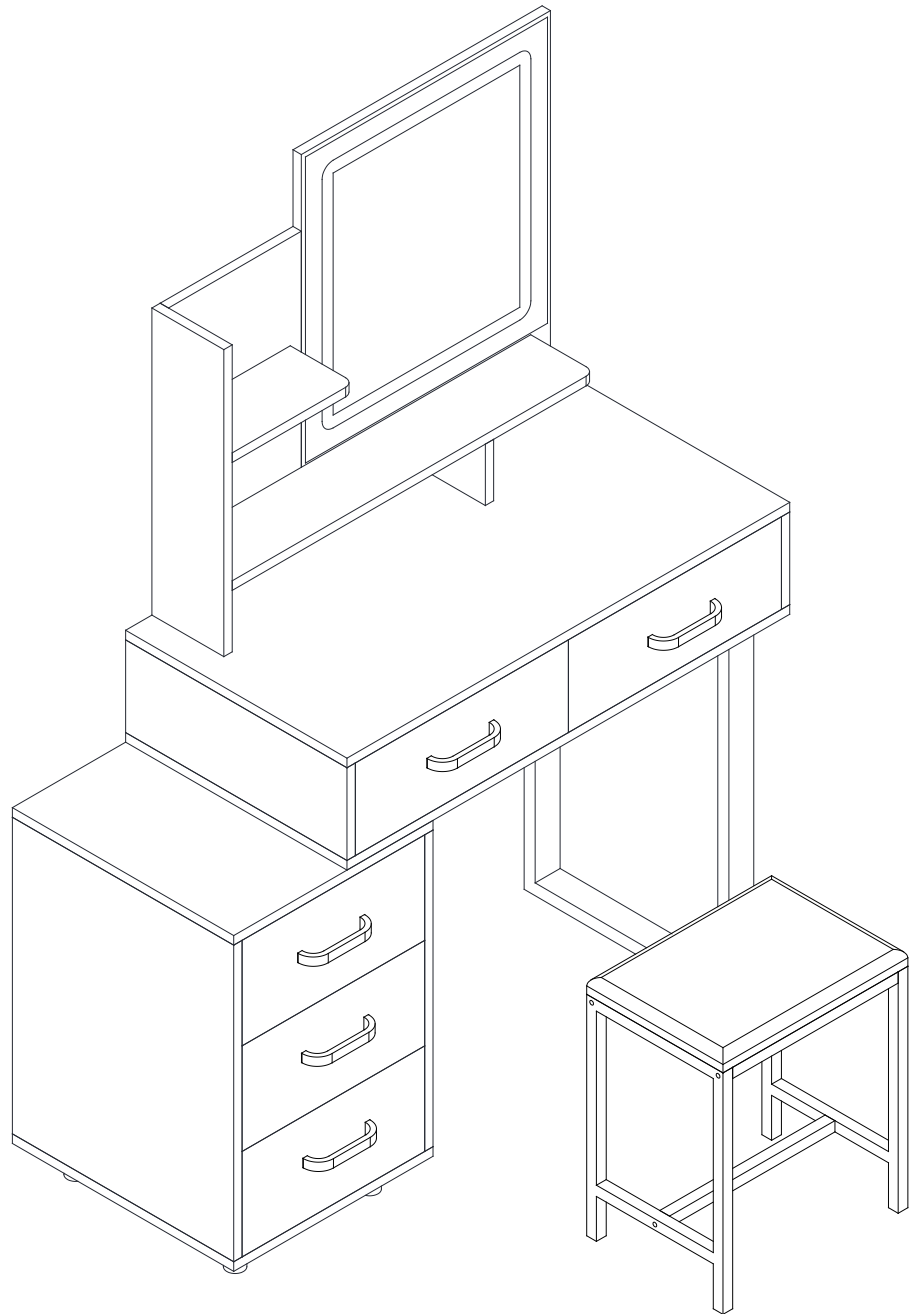
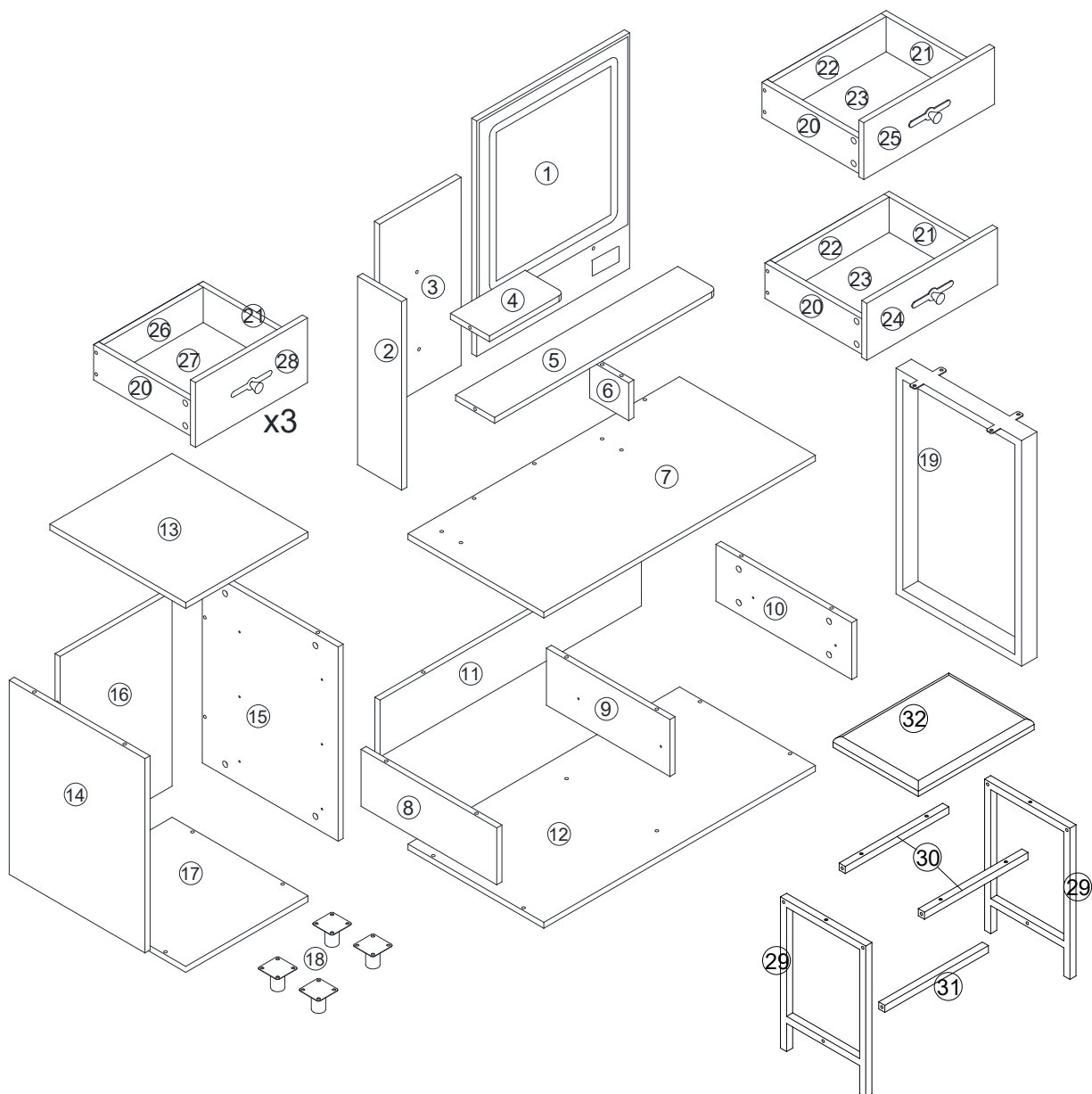


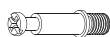
INSTALLATION MANUAL





1 - x1	8 - x1	15 - x1	22 - x2	29 - x2
2 - x1	9 - x1	16 - x1	23 - x2	30 - x2
3 - x1	10 - x1	17 - x1	24 - x1	31 - x1
4 - x1	11 - x1	18 - x4	25 - x1	32 - x1
5 - x1	12 - x1	19 - x1	26 - x3	
6 - x1	13 - x1	20 - x5	27 - x3	
7 - x1	14 - x1	21 - x5	28 - x3	

HARDWARE



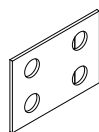
A	SCREW & PLASTIC LOCK	x60
---	----------------------	-----



B	SCREW & METAL LOCK	x60
---	--------------------	-----



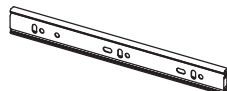
C	SCREW	x70
---	-------	-----



D	METAL PLATE	x1
---	-------------	----



E	HANDLE	x10
---	--------	-----



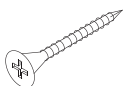
F	RAIL	x10
---	------	-----



G	SCREW	x20
---	-------	-----



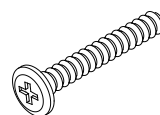
H	SCREW	x5
---	-------	----



J	SCREW	x4
---	-------	----



K	SCREW	x4
---	-------	----



M	SCREW	x6
---	-------	----



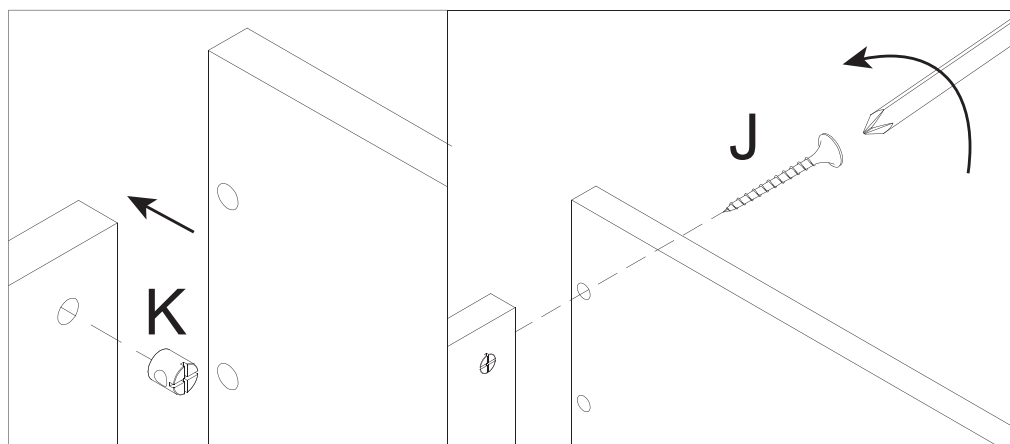
N	SOCKET	x1
---	--------	----



P		x1
---	--	----

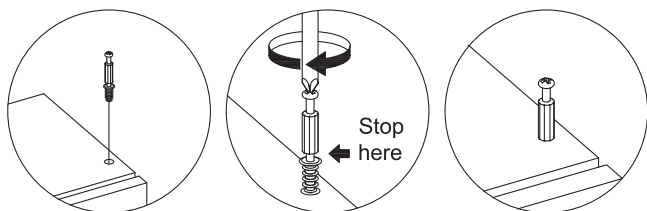


Q	SCREW	x2
---	-------	----

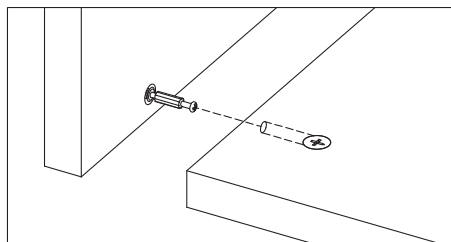


1. Screw installation method

When the screw is installed, please keep it in line with the board, and do not tighten it too tightly

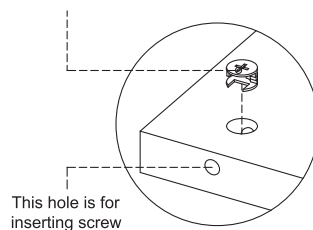


3. Installation on the board with fixing screws

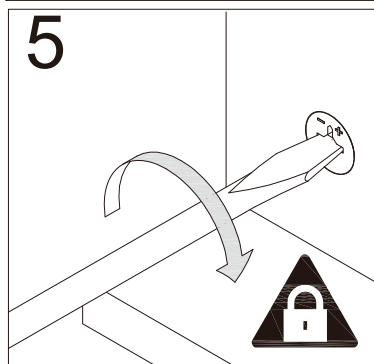
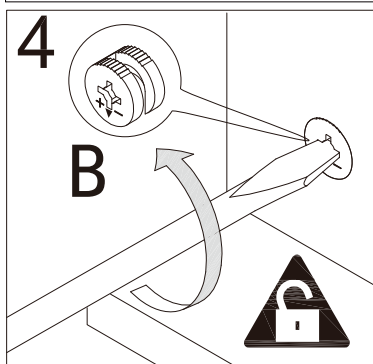
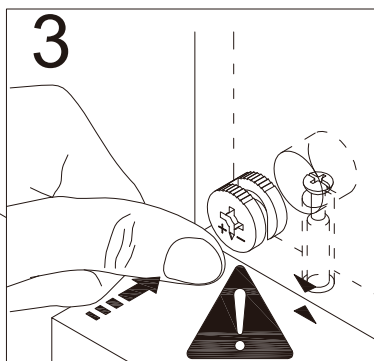
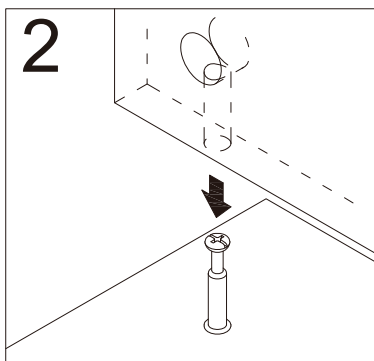
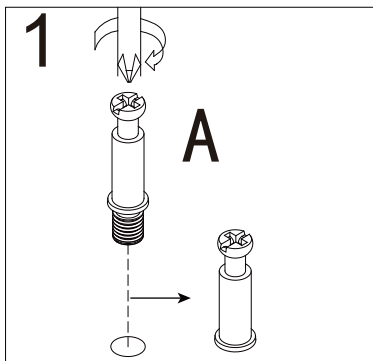
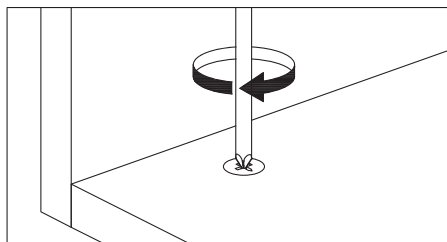


2. Check the Nut direction

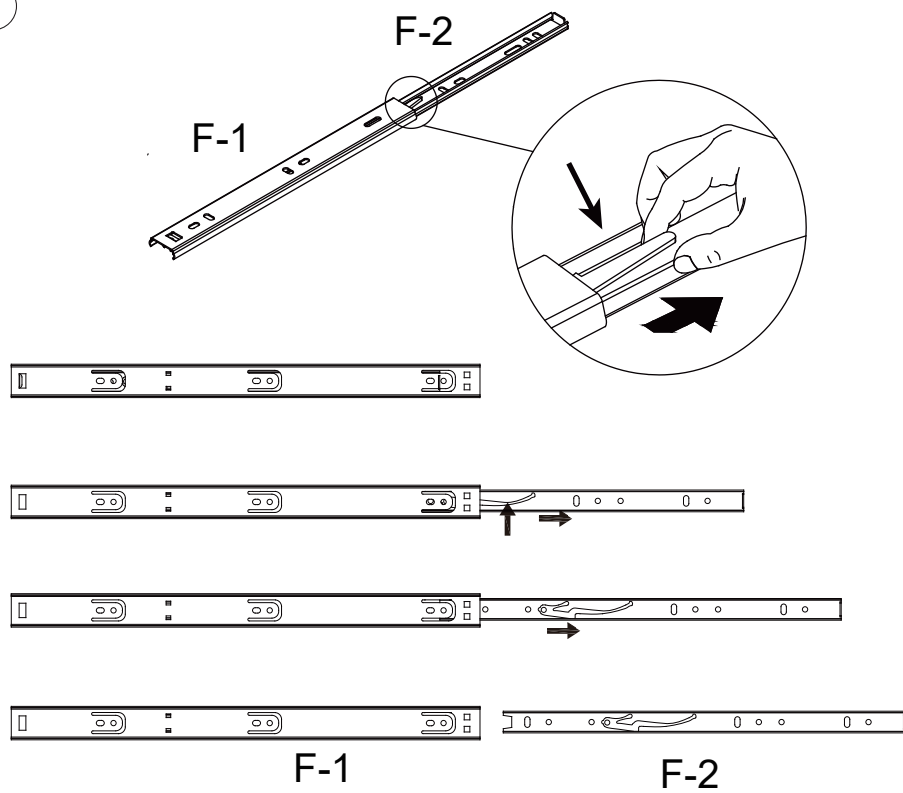
This direction of the marked nut is consistent with the direction in which the screw is inserted



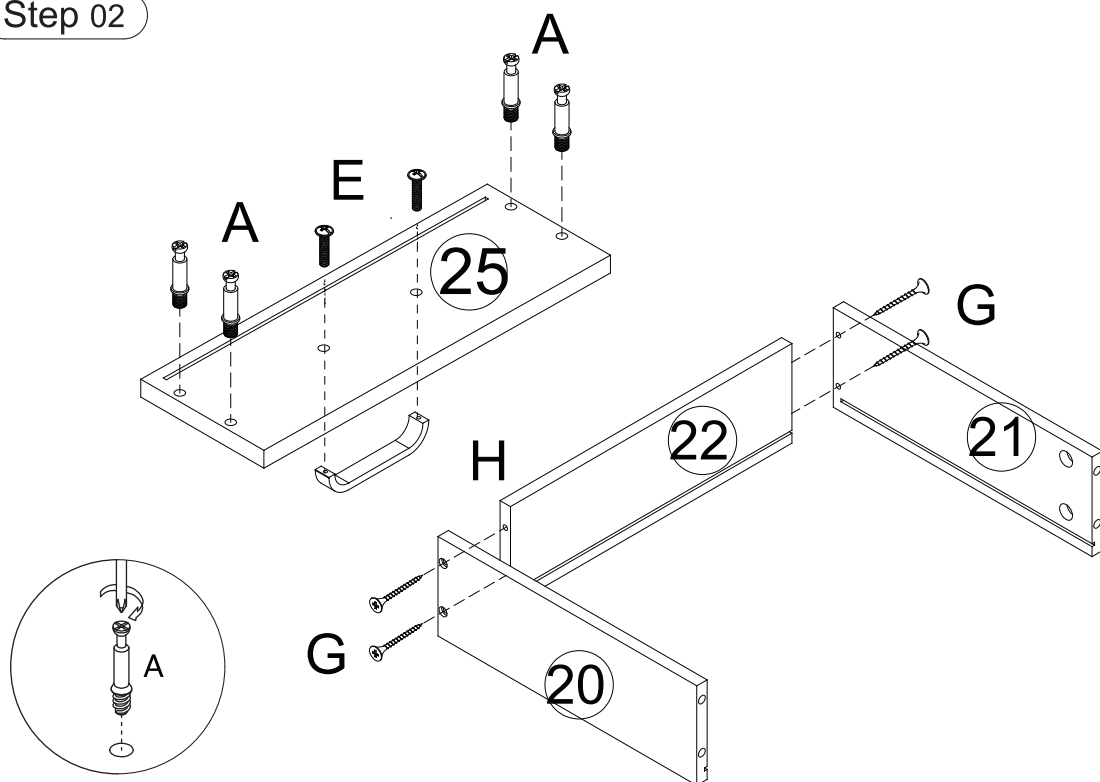
3. Rotate slowly until it stops



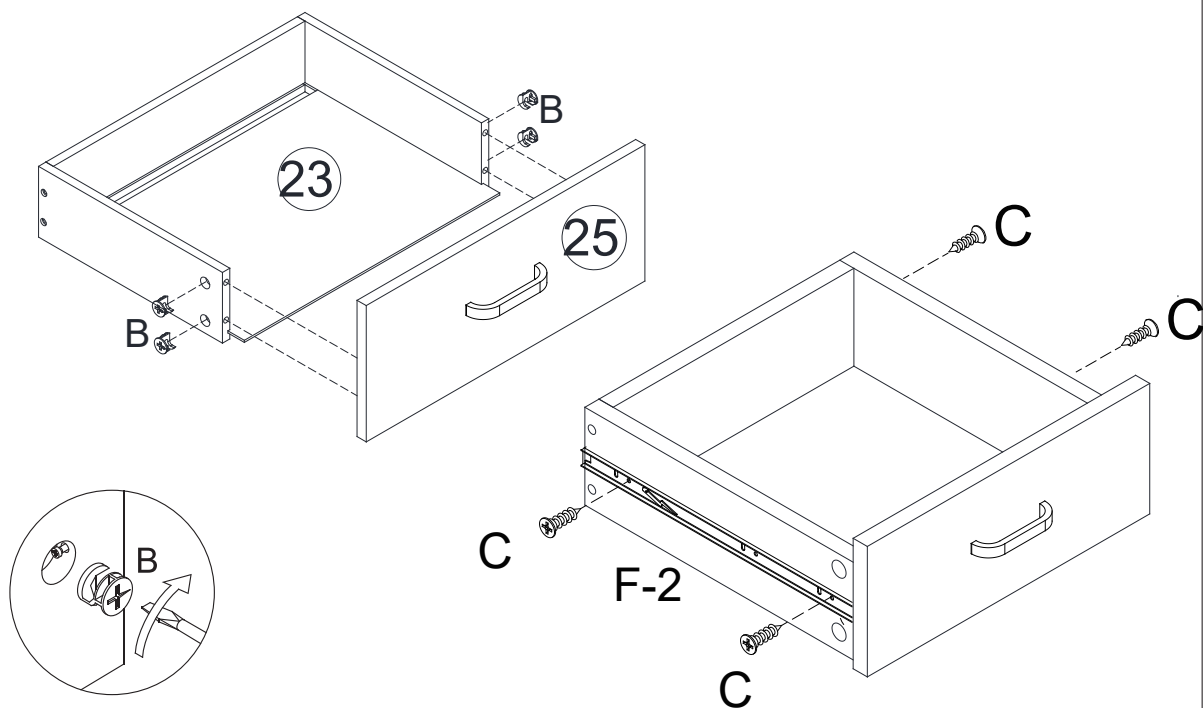
Step 01



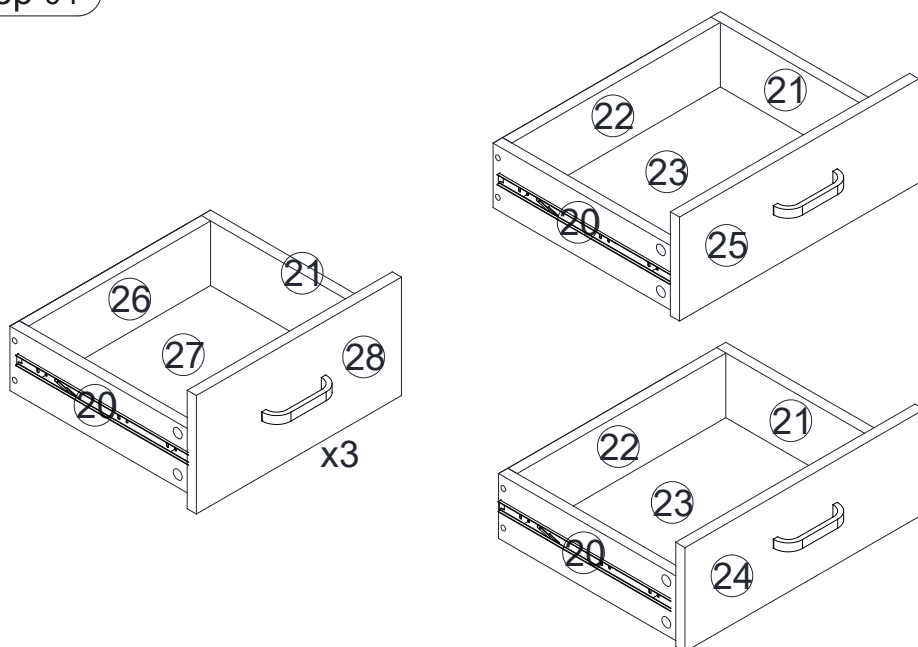
Step 02



Step 03

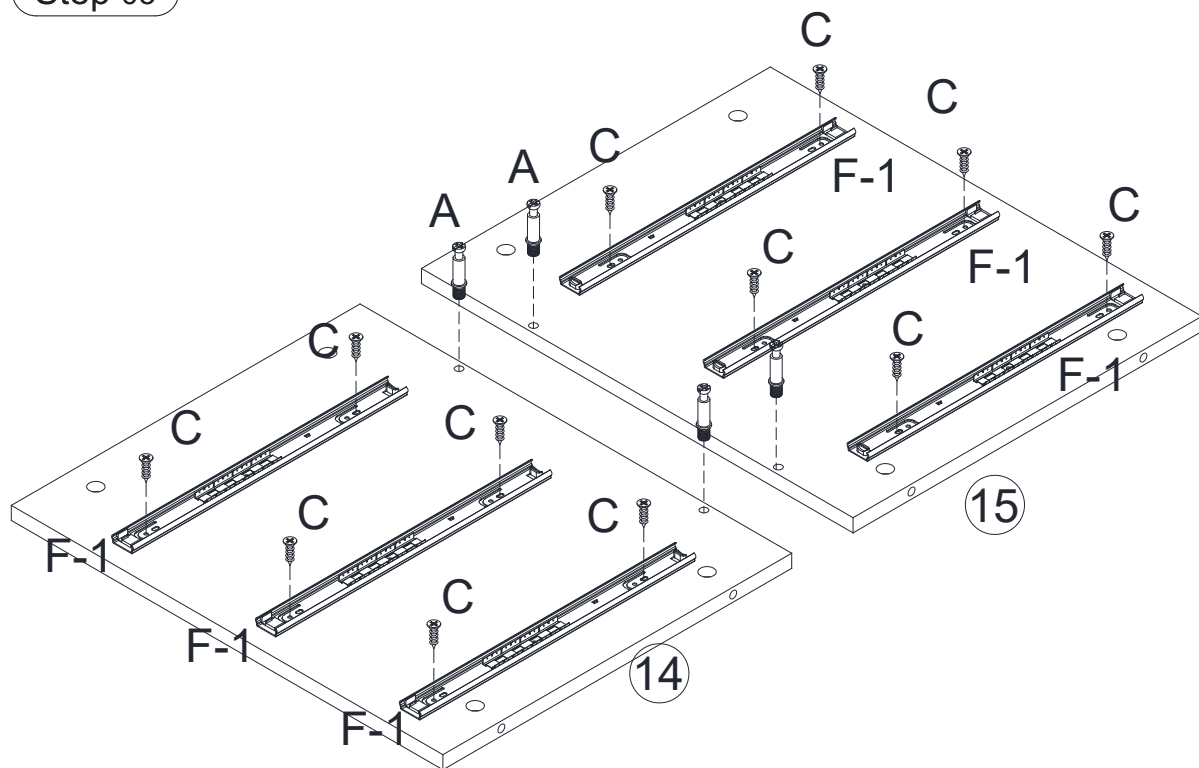


Step 04

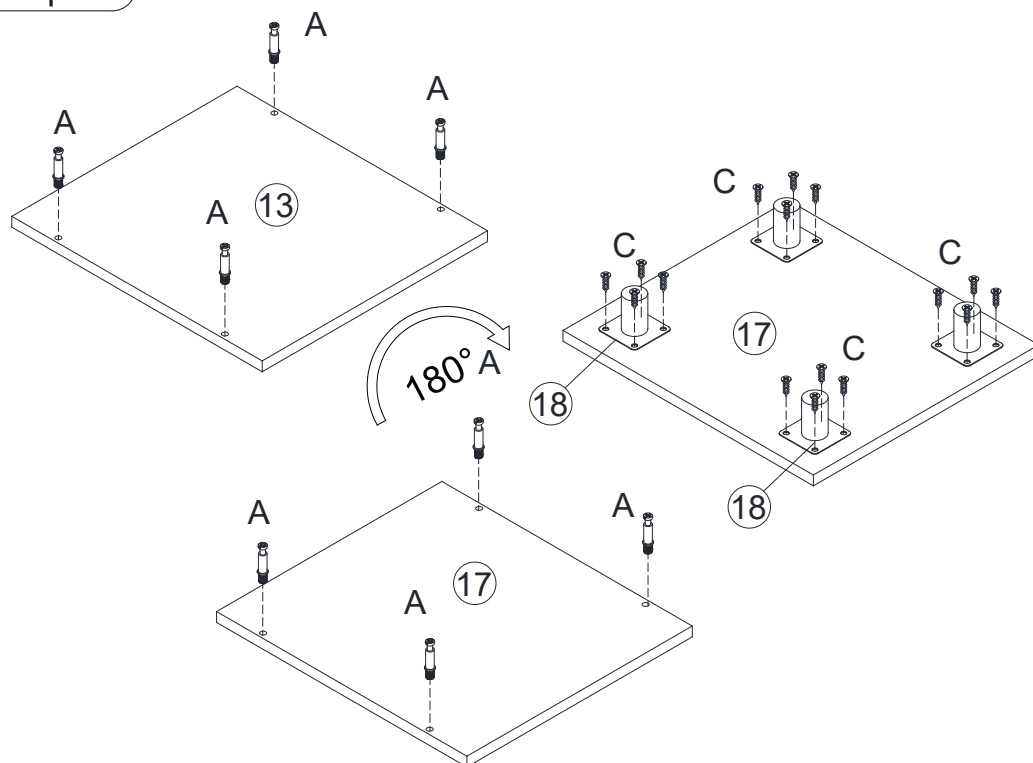


Five drawers are installed the same way

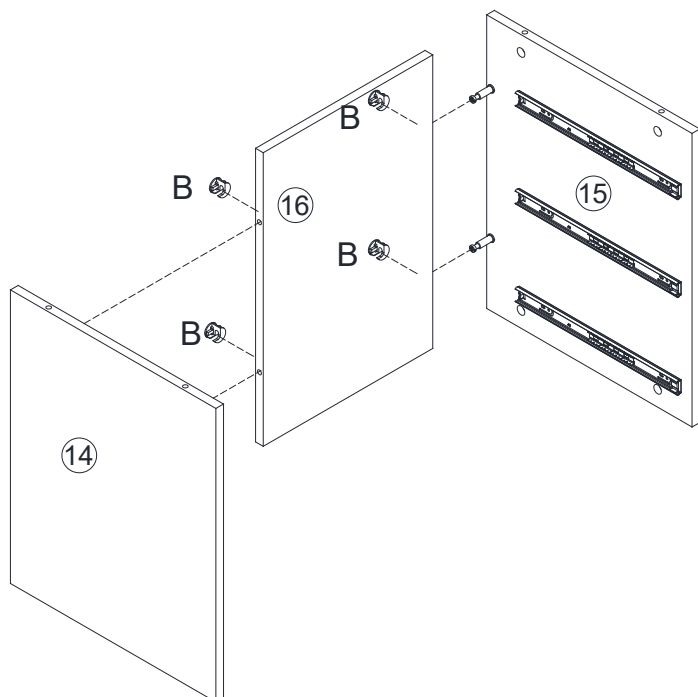
Step 05



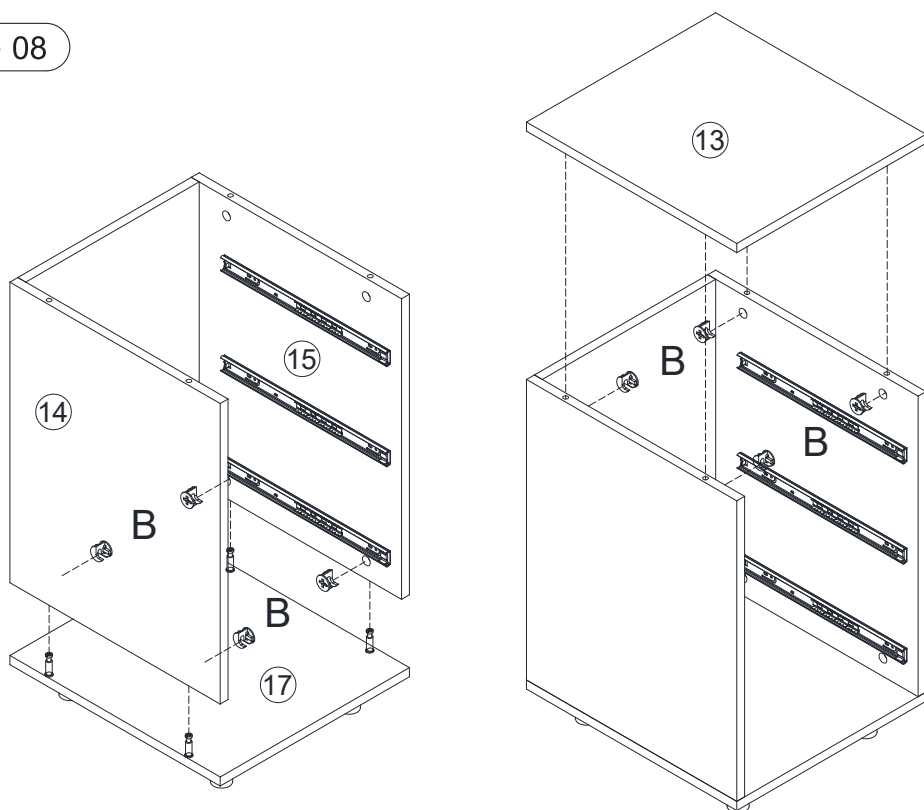
Step 06



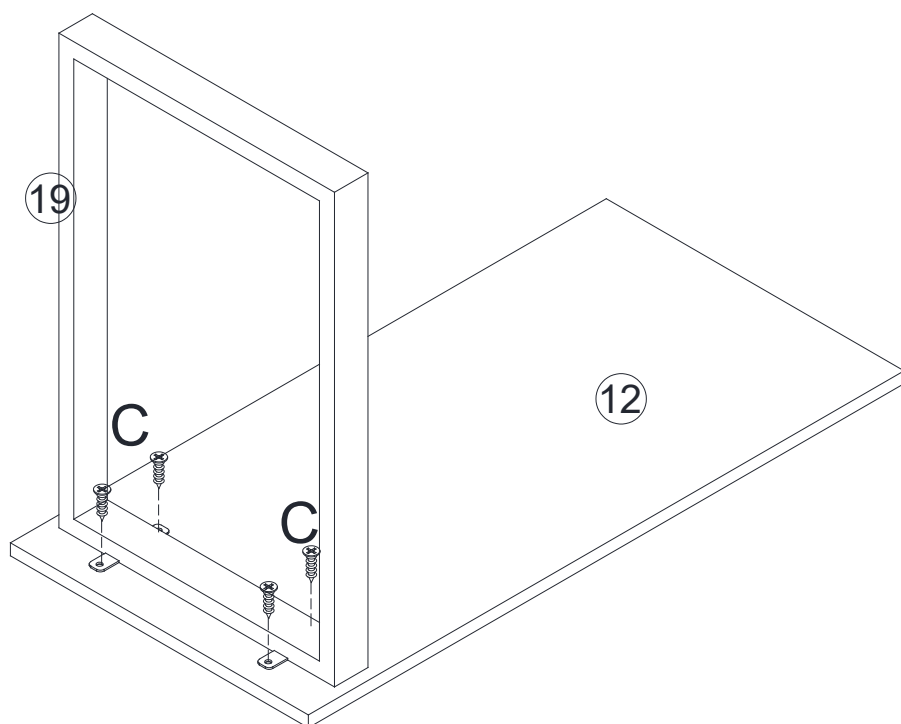
Step 07



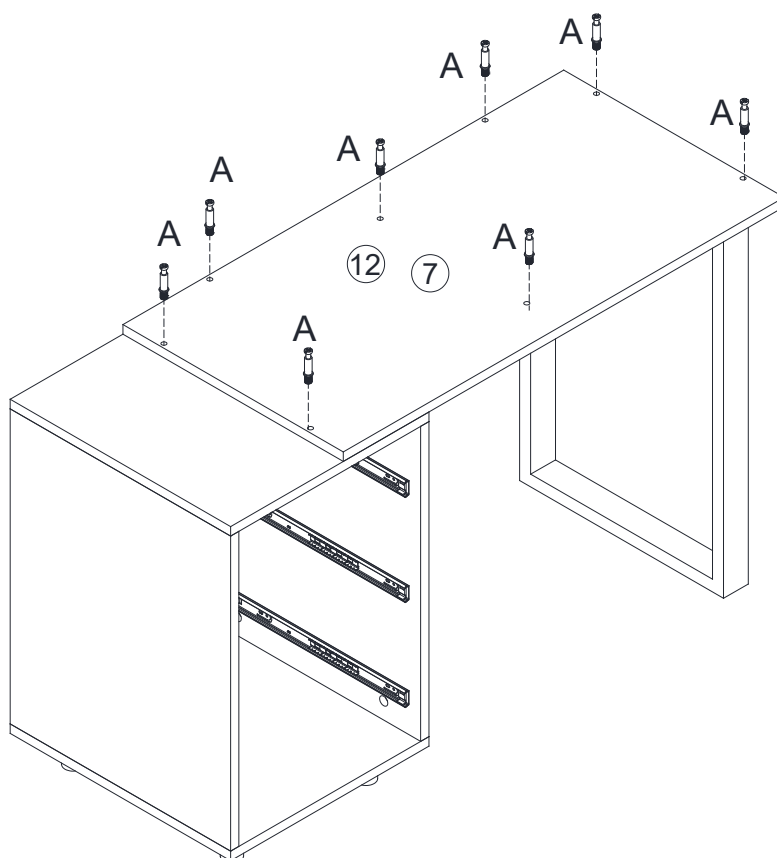
Step 08



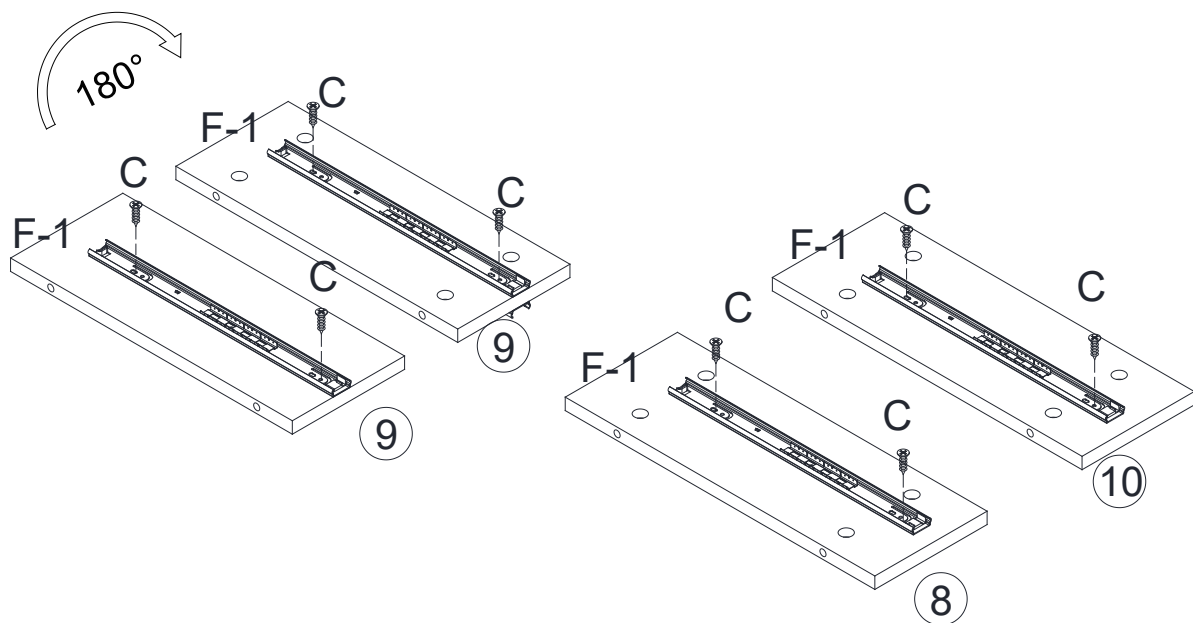
Step 09



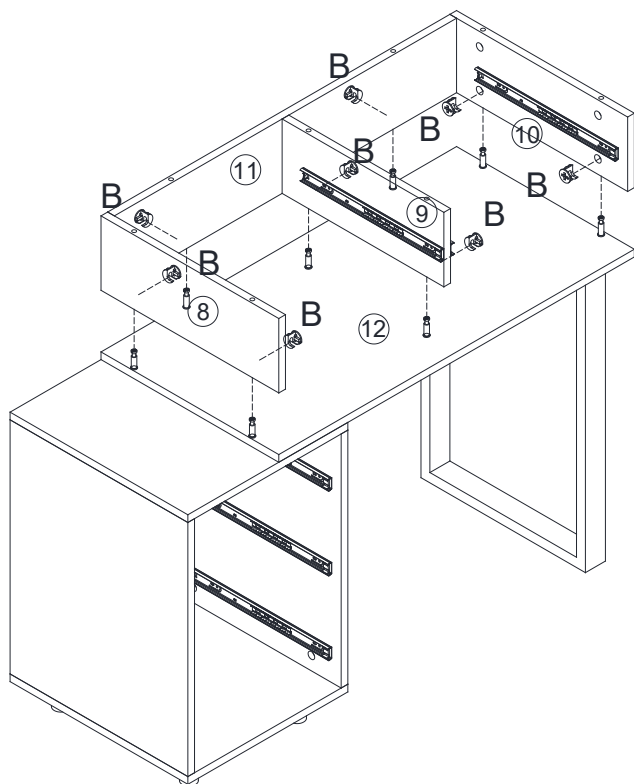
Step 10



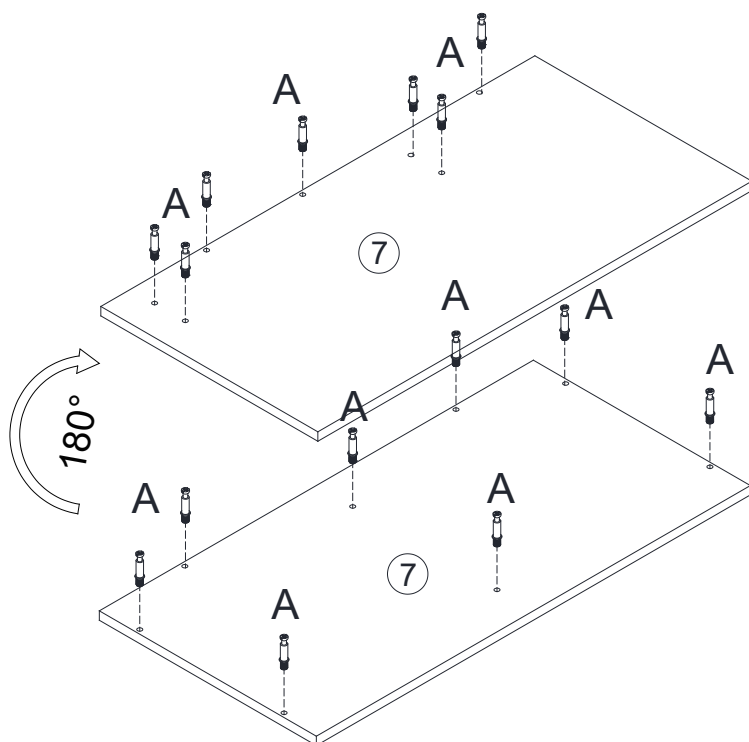
Step 11



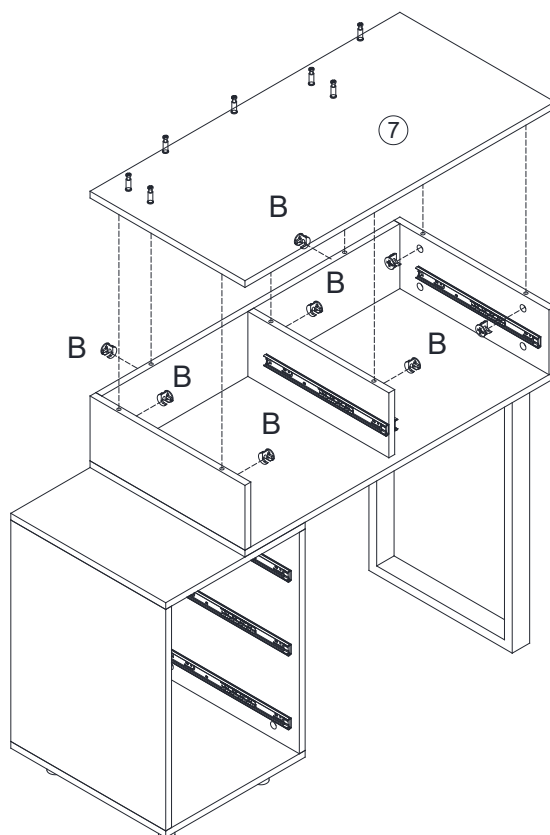
Step 12



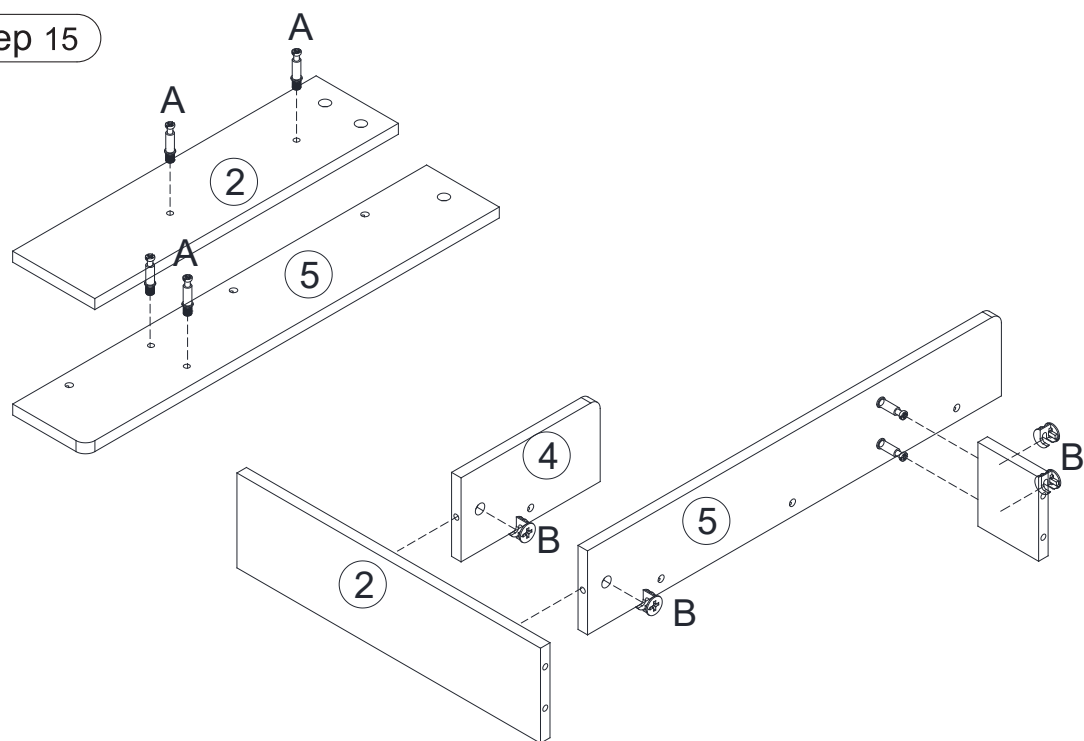
Step 13



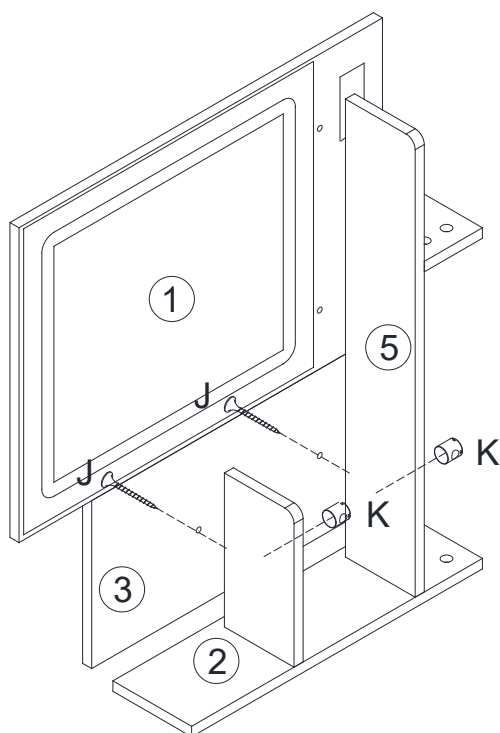
Step 14



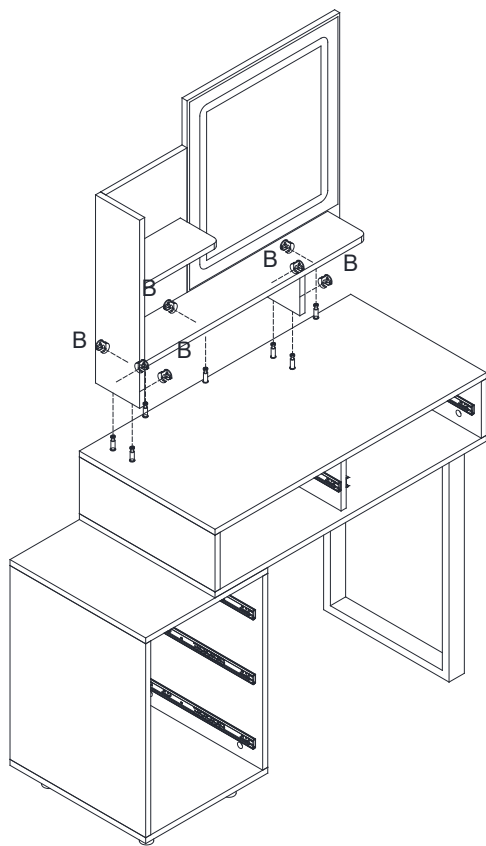
Step 15



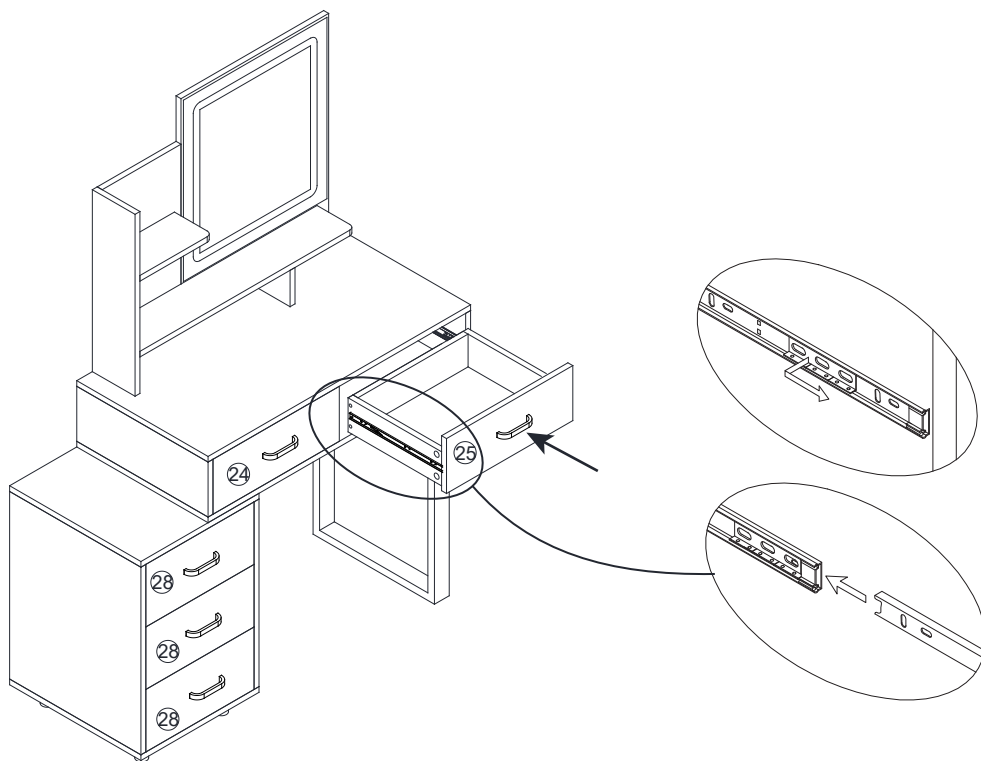
Step 16



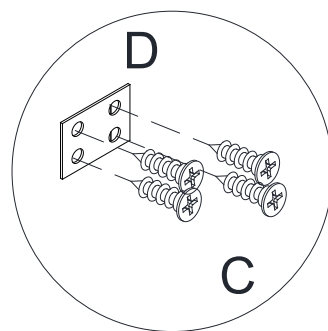
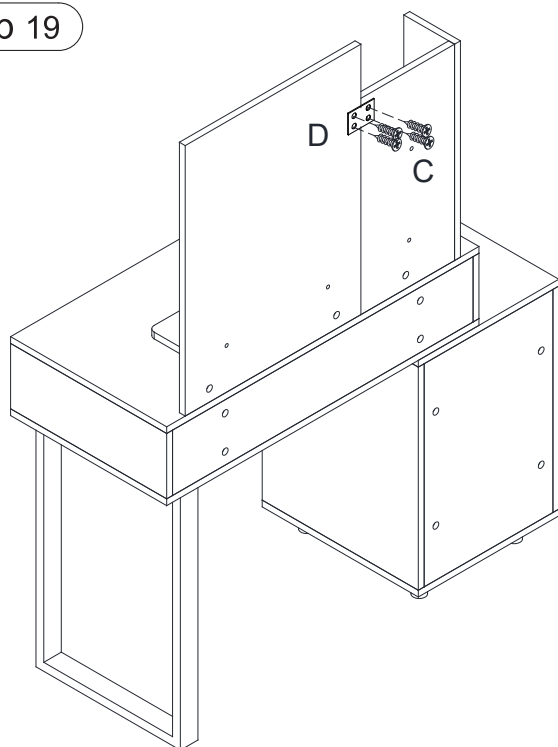
Step 17



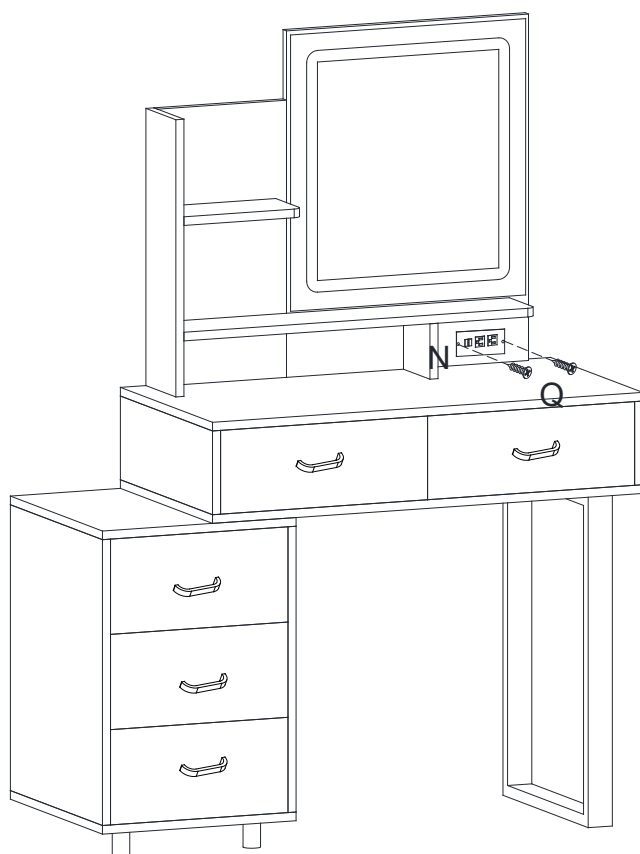
Step 18



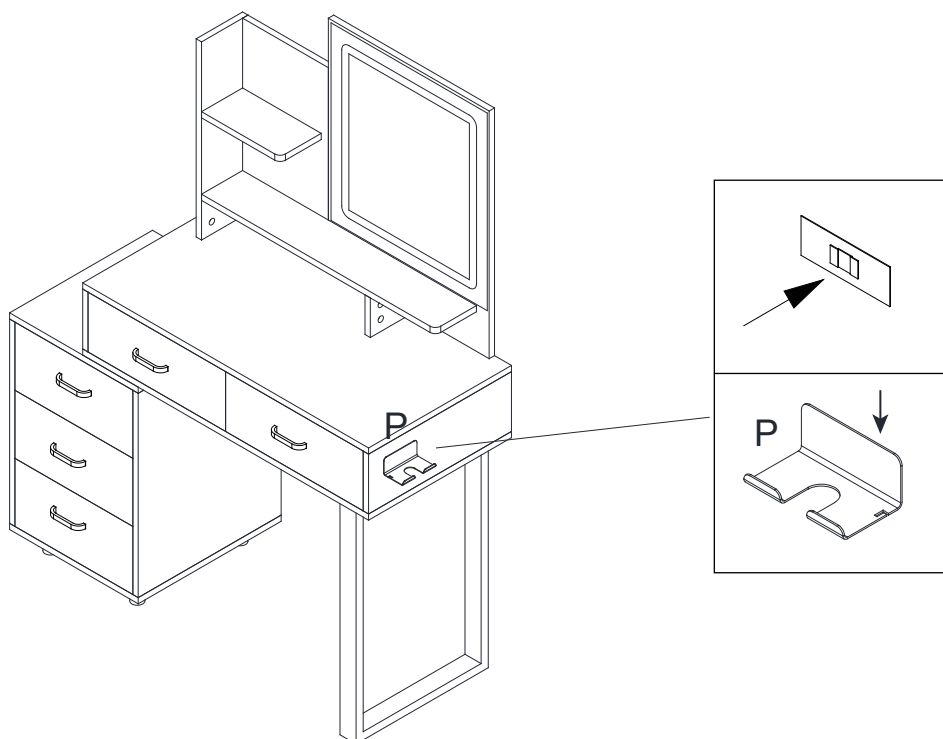
Step 19



Step 20



Step 21



Step 22

