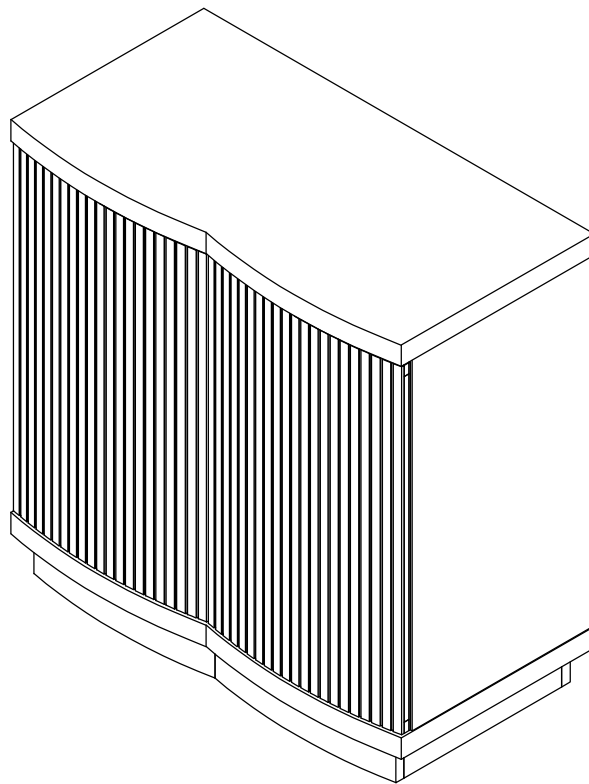


Let's build the

Tambellini Storage Cabinet

SKU 31240



Scan me!

Free Lifetime
Warranty

nathan james

25-0531-VN

Ok, let's get rolling

This should be easy, just follow our instructions and you will be back to Netflix in no time.

Estimated time for assembly

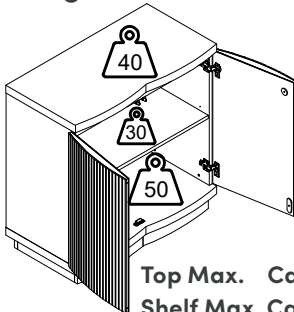


90:00

What you need

- Phillips-head screwdriver
- $\frac{5}{16}$ " Drill Bit OR $\frac{1}{4}$ " Drill Bit
- Drill
- Some of your favourite bubbly or your preferred relaxant
- Use the packaging carton as a working surface to prevent product damage during assembly

Weight Limitation



Top Max. Capacity: 40 lbs
Shelf Max. Capacity: 30 lbs.
Bottom Max. Capacity: 50 lbs.

Toll-free at 1-866-619-1004
Help@nathanjames.com
Nathanjames.com/help

What's included

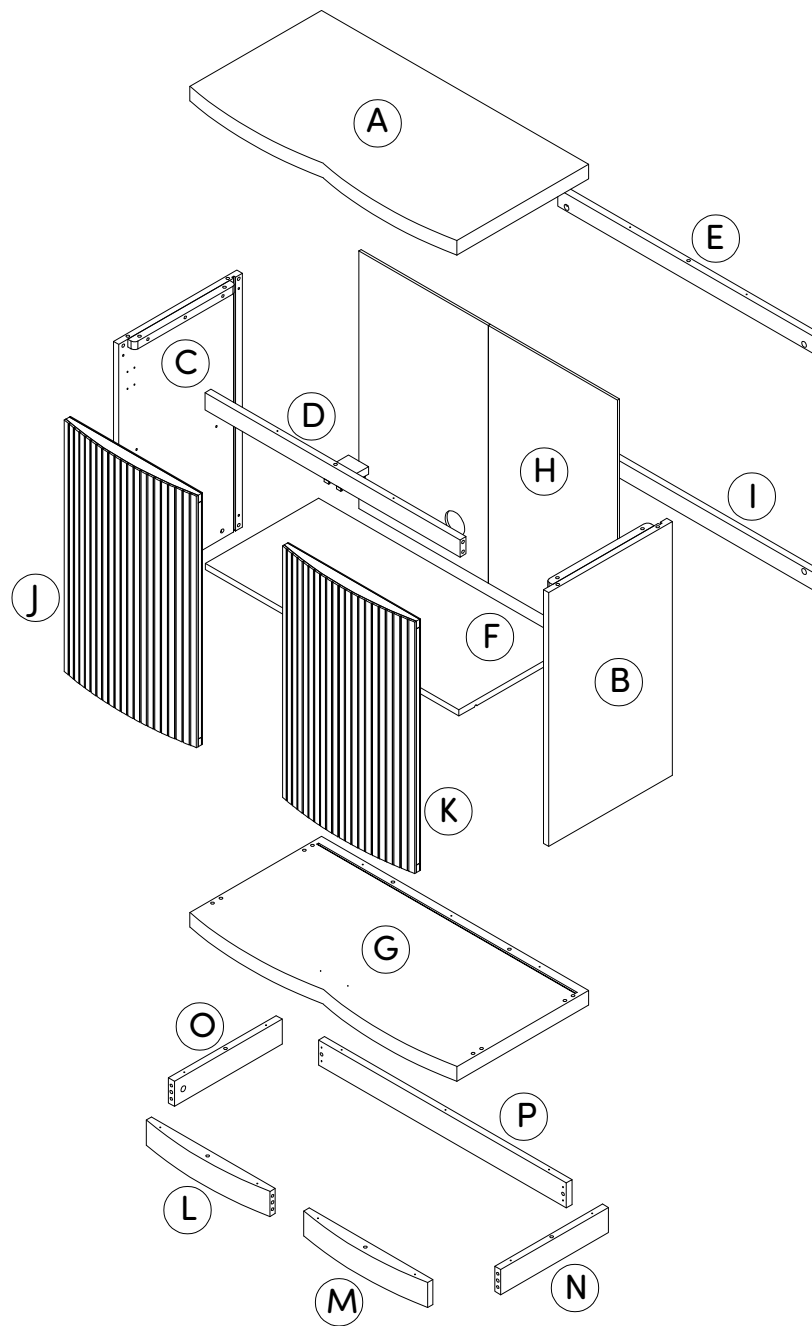
Description		Qty
A	Top Panel	1
B	Right Side Panel	1
C	Left Side Panel	1
D	Top Front Rail	1
E	Top Back Rail	1
F	Shelf	1
G	Bottom Panel	1
H	Back Panel	1
I	Bottom Back Rail	1
J	Left Door	1
K	Right Door	1
L	Base-Left Front Panel	1
M	Base-Right Front Panel	1
N	Base-Right Side Panel	1
O	Base-Left Side Panel	1
P	Base-Back Panel	1

Scan me!

Free Lifetime
Warranty



The goods



IMPORTANT

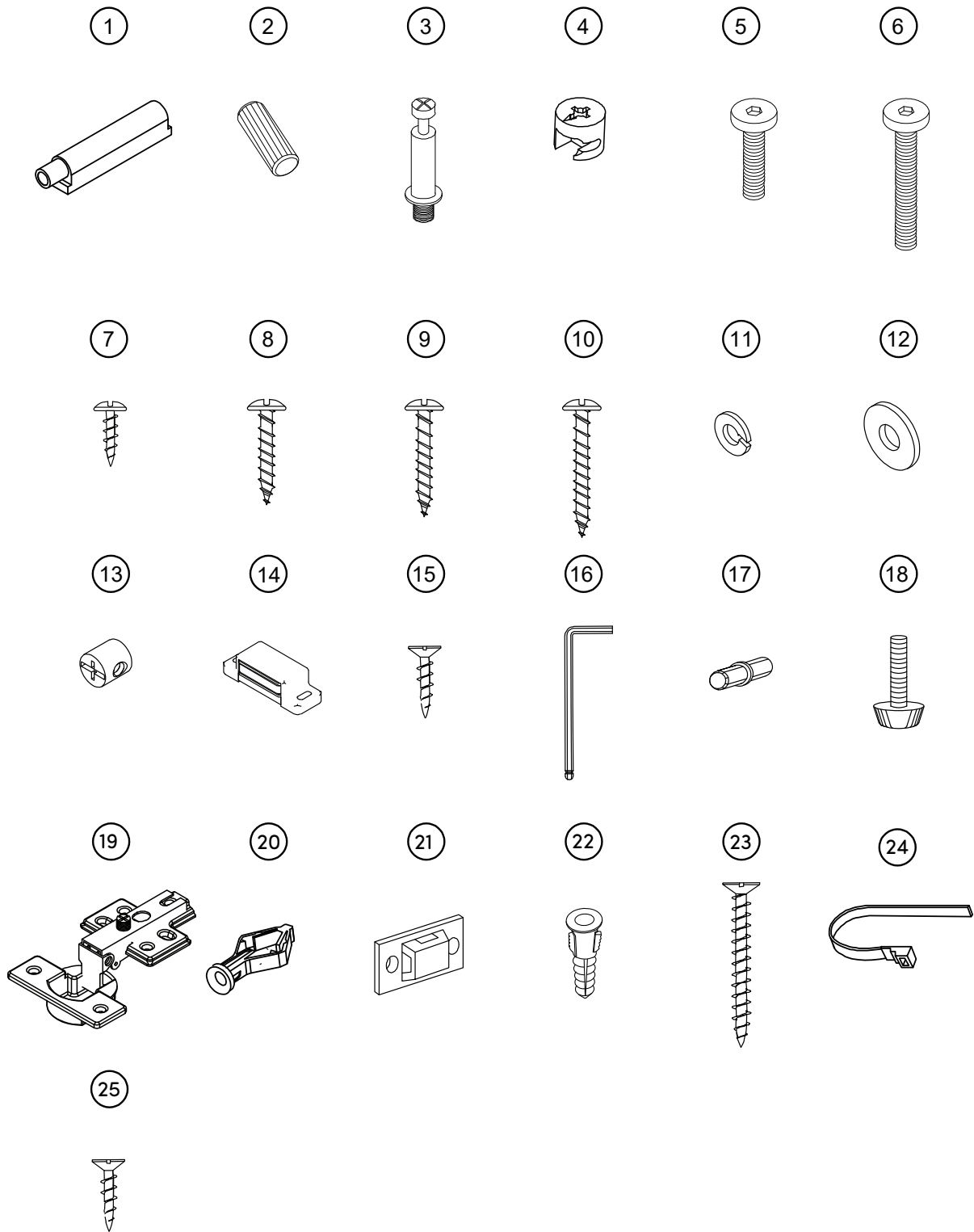
1. Do not tighten bolts / screws completely until all bolts / screws are lined up and inserted into holes.
2. Do not over tighten screws and bolts to avoid stripping.

What's included

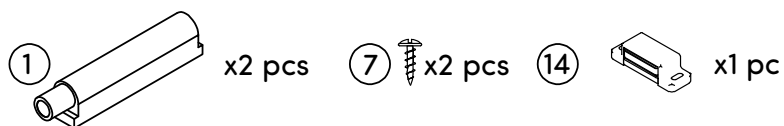
	Description	Qty
1	Magnetic Push Latch	2
2	Ø8 x 30mm Wooden Dowel (Extra 2pcs)	32
3	M6*35mm Cam Bolt (Extra 2pcs)	11
4	Ø15*10 mm Cam Lock (Extra 2pcs)	11
5	1/4" x 35mm Hex Button Head Bolt	4
6	1/4" x 60mm Hex Button Head Bolt	4
7	M3 x15mm Screw	2
8	M4 x30mm Screw	4
9	M4 x35mm Screw	7
10	M4 x55mm Screw	11
11	1/4" x 10mm Spring Washer	8
12	1/4" x 13mm Flat Washer	8
13	Barrel Nut	4
14	Magnetic Door Catch	1
15	M3.5 x12mm Screw (Extra 2pcs)	26
16	Allen Key	1
17	Shelf Support Pin	4
18	Leveler (Extra)	4
19	Hinge	4

	Description	Qty
20	Drywall Anchor (Anti-Tip Kit)	2
21	Plastic Bracket (Anti-Tip Kit)	2
22	Non - Drywall Anchor (for Anti-Tip Kit)	2
23	M4x50mm Screw (for Anti-tip)	2
24	Plastic Strap (Anti-Tip Kit)	1
25	M3.5x15mm Screw (for Anti-tip)	2

The goods



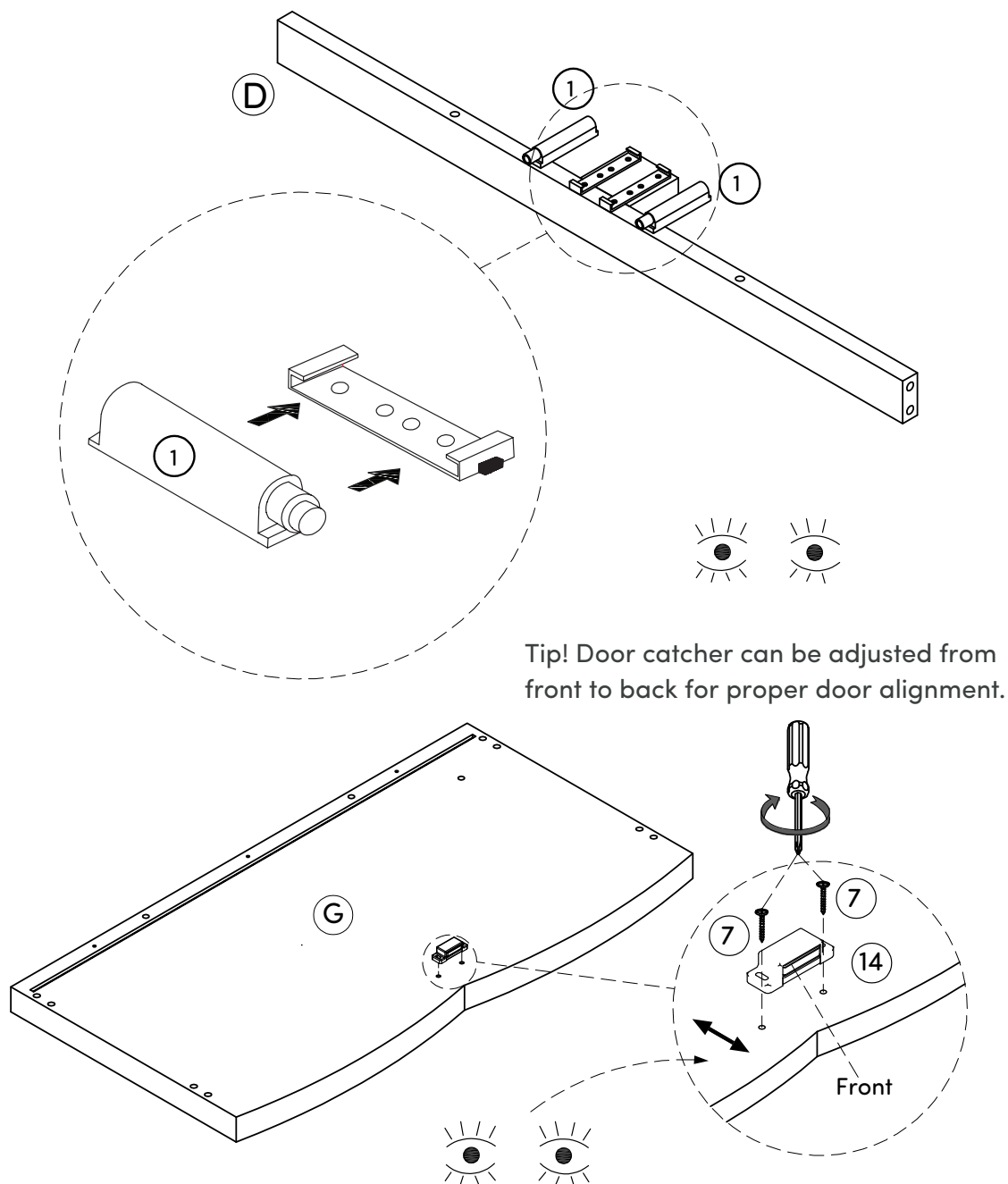
Step 1



Let's get this thing fired up!

Attach the Magnetic Push Latch (1) to the Top Front Rail (D) as shown below.

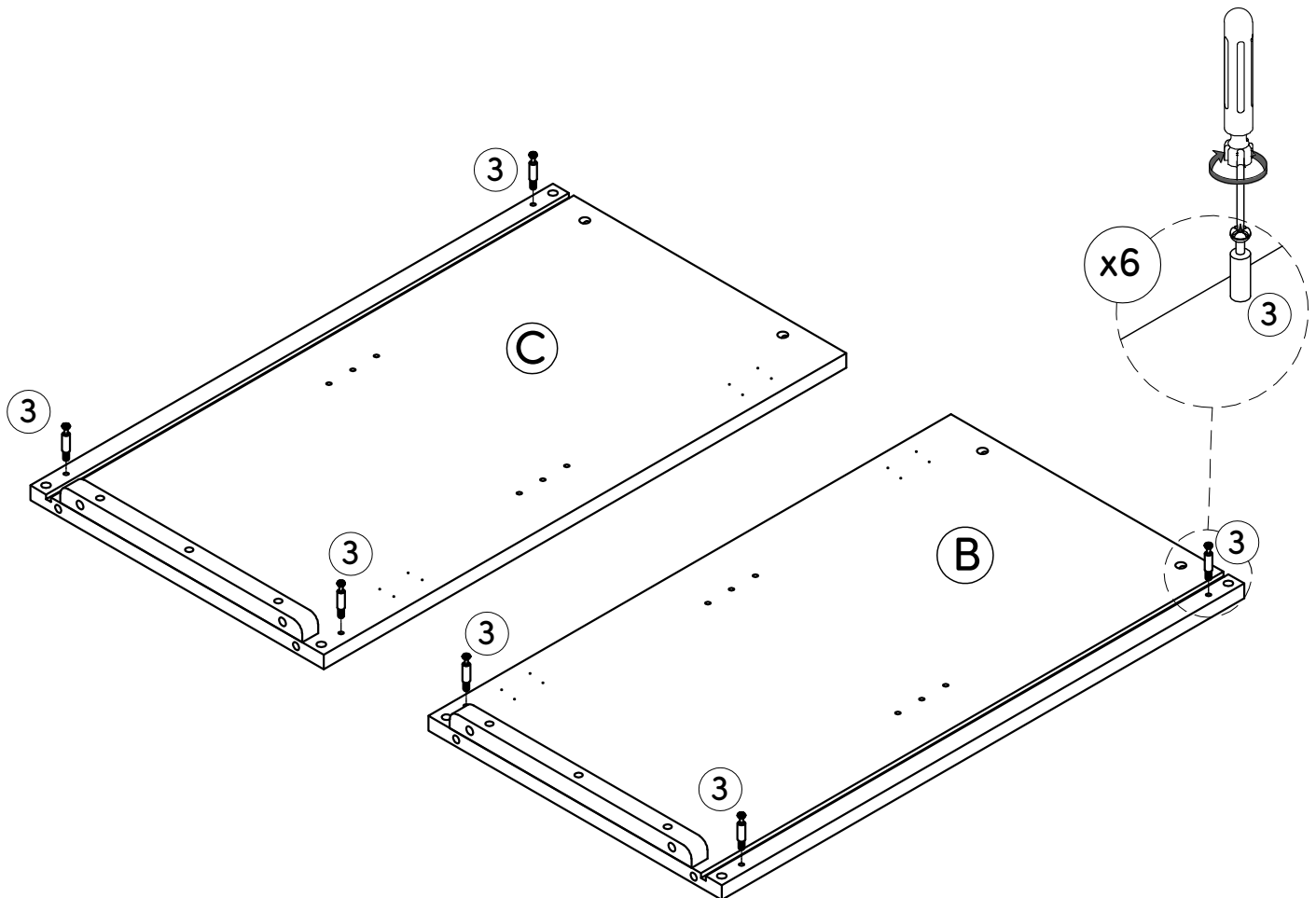
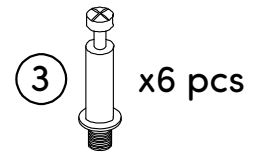
Next, attach the Magnetic Door Catches (14) to the Bottom Panel (G) using Screw (7).



Tip! Door catcher can be adjusted from front to back for proper door alignment.

Step 2

Screw the Cam Bolts (3) into the Right Side Panel (B) and Left Side Panel (C).

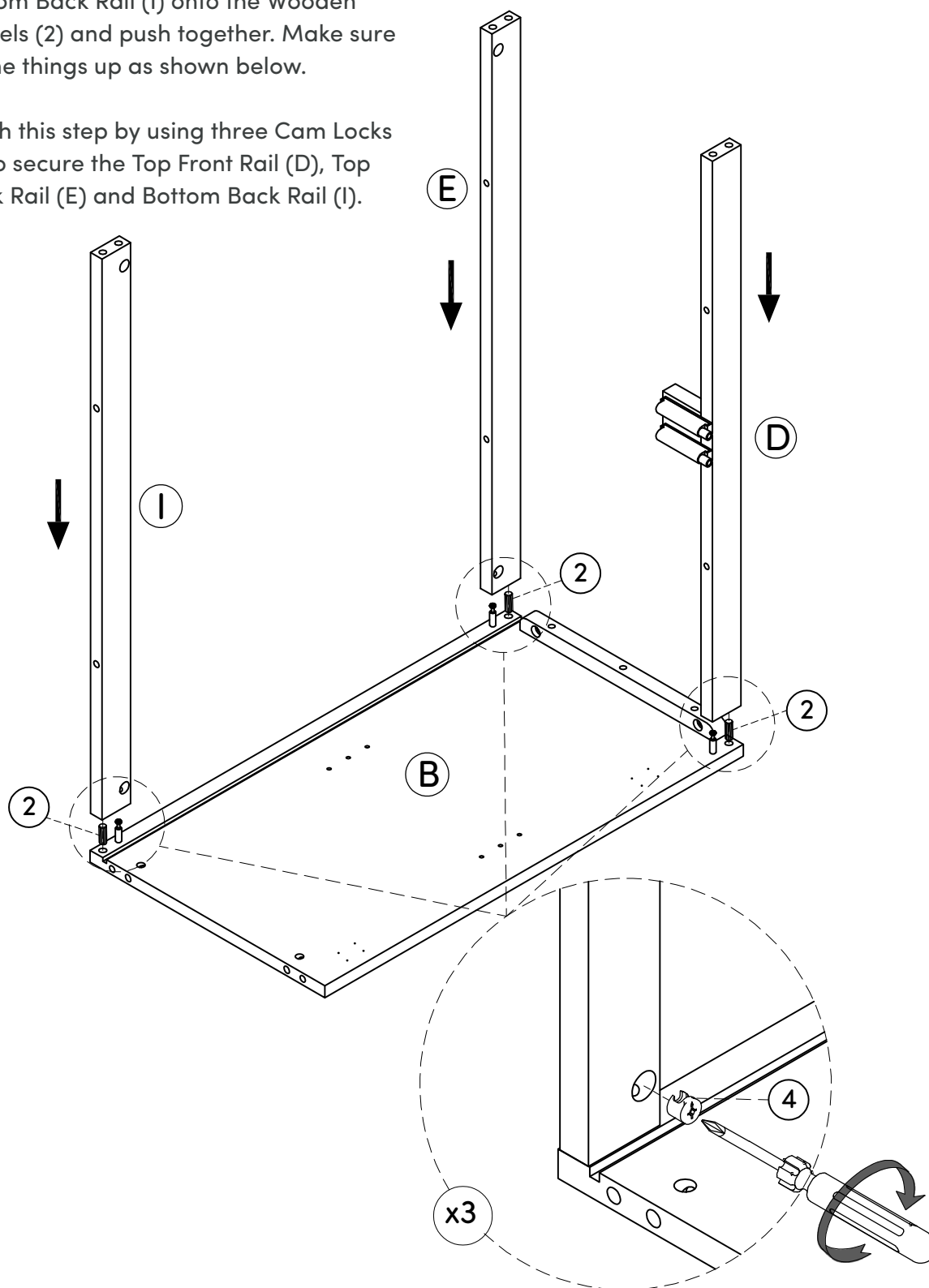


Step 3

②  x3 pcs ④  x3 pcs

Insert three Wooden Dowels (2) into the Right Side Panel (B). Now place the Top Front Rail (D), Top Back Rail (E) and Bottom Back Rail (I) onto the Wooden Dowels (2) and push together. Make sure to line things up as shown below.

Finish this step by using three Cam Locks (4) to secure the Top Front Rail (D), Top Back Rail (E) and Bottom Back Rail (I).



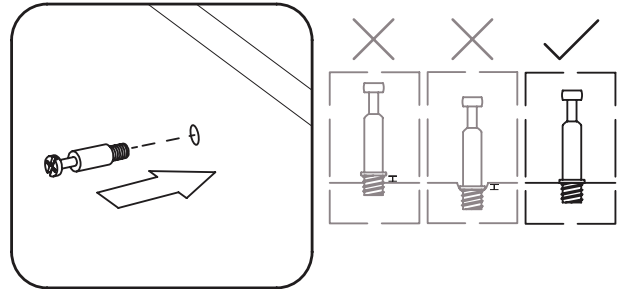
How to use cam locks

Did you know?

Cam locks are used to join two panels together, usually the edge of one to the flat side of another.

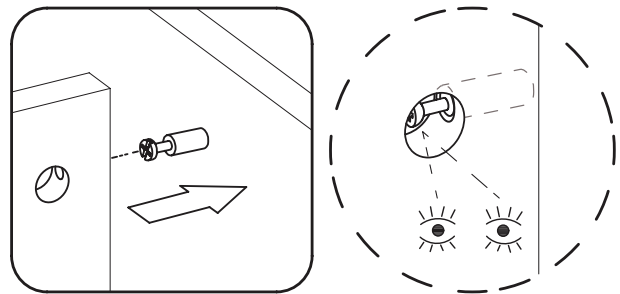
First, your cam bolt (or cam pin) will need to be properly inserted into the flat side of the board.

Important Note: Only tighten the cam bolt until it is secure. Do not over-tighten.



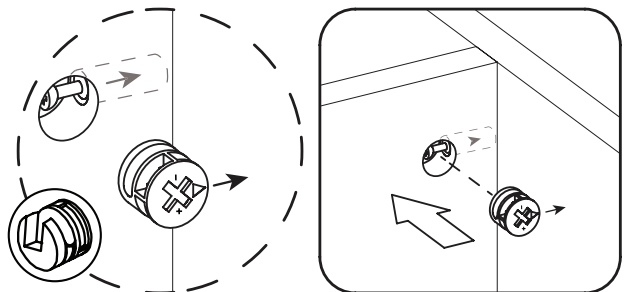
Next, you will fit the proper hole on the edge of the associated joining panel over the cam bolt.

Important Note: When installed properly, the head of the cam bolt will be visible through the larger hole on the side of the joining panel.



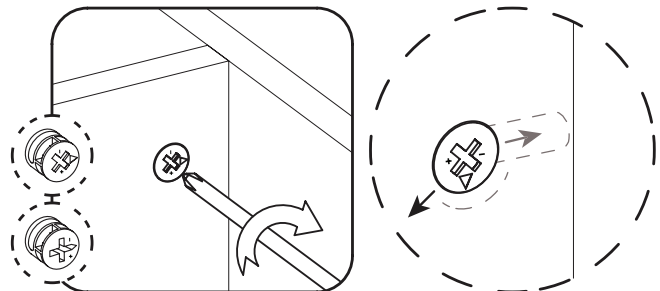
Next, you will notice the cam lock has a “C” shaped back. Commonly, an arrow on the front of the cam lock points in the same direction as the open section on back.

Using these as your cue, insert the cam lock into the large hole so the opening of the “C” fits over the head of the cam bolt.



Using a screwdriver, you will turn the cam lock until it stops, usually between 130° or 180°. You will feel the panels pulling closer until they are secured.

Important Note: Only turn the cam lock until the panels are fully engaged & feel secure. Turning too far may lead to hardware failure.



Still having issues?

If a cam lock seems to be spinning in place or is not “catching” or pulling the panels together as expected, first remove the cam lock & try again while making sure that everything is properly positioned & oriented.

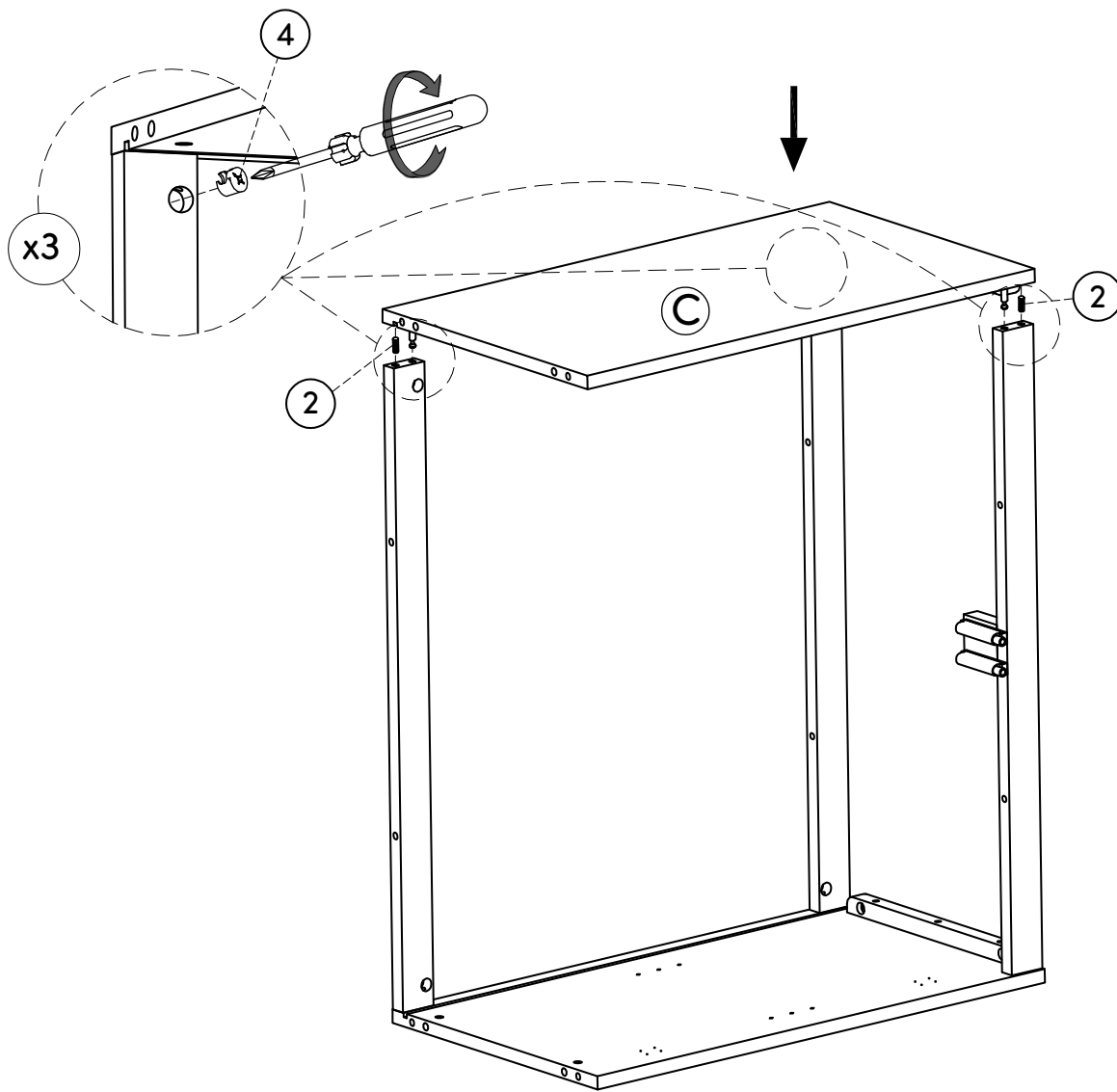
If you are still having issues getting things work ing as expected, first remove the cam lock then unscrew the cam bolt slightly (less than 1 complete turn) to see if that helps with the alignment of the cam lock & bolt.

Step 4

②  x3pcs ④  x3 pcs

Similar to step 3, insert three Wooden Dowels (2) into the Top Front Rail (D), Top Back Rail (E) and Bottom Back Rail (I). Now place the Left Side Panel (C) onto the Wooden Dowels (2) and push together.

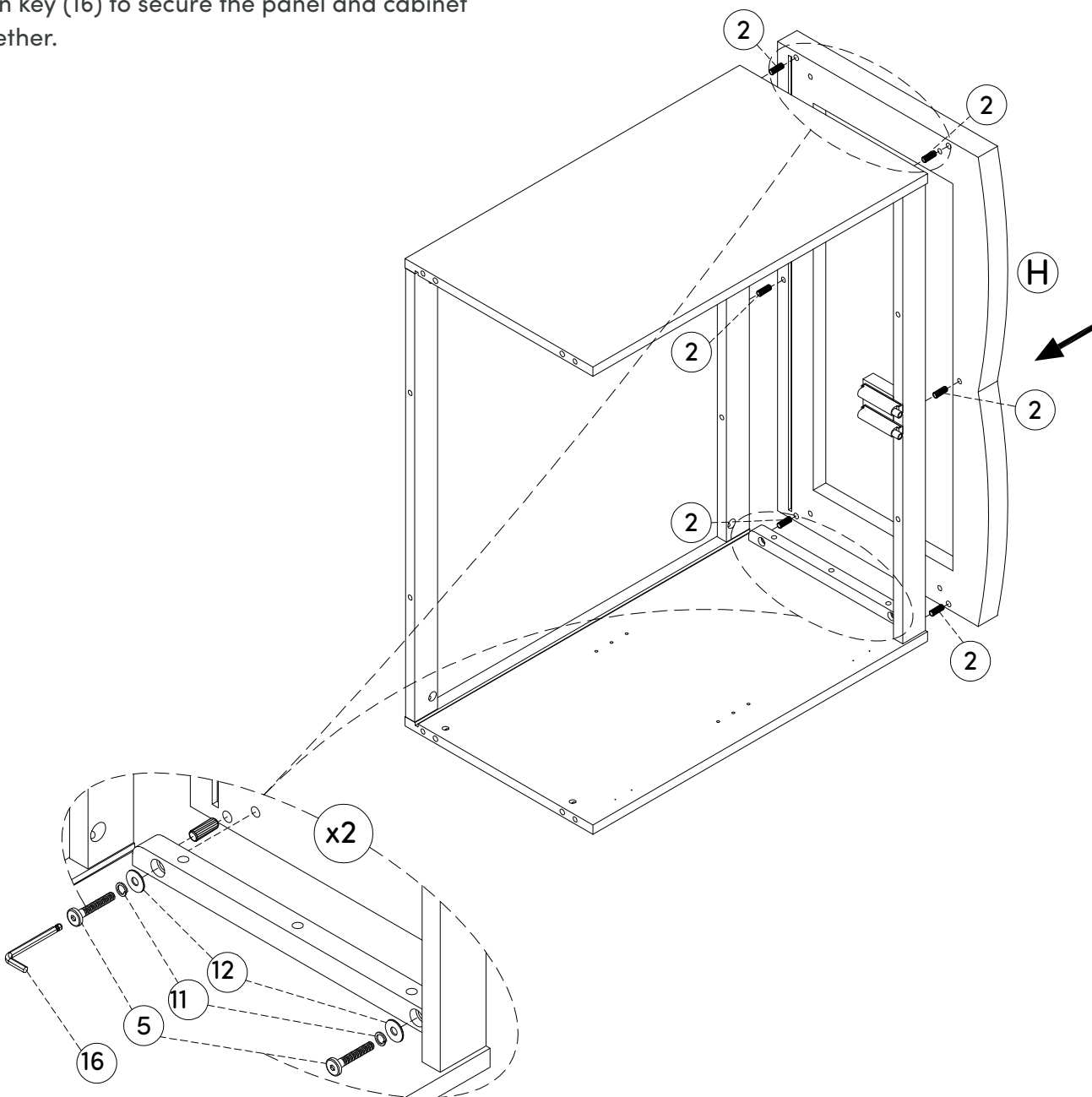
Finish this step by using three Cam Locks (4) to secure the Left Side Panel (C).



Step 5

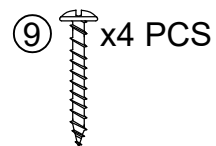
② x6 pcs ⑤ x4 pcs ⑪ x4 pcs ⑫ x4 pcs

Now attach the Top Panel (A) to the pieces you assembled in Step 4. Secure in place using the Wooden Dowels (2), then slide the Spring Washer (11) and the Flat Washer (12) on to the Bolts (5). Use these parts and the Allen key (16) to secure the panel and cabinet together.

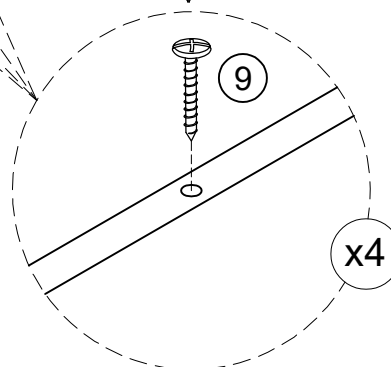
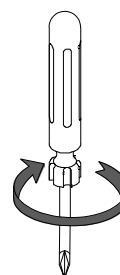
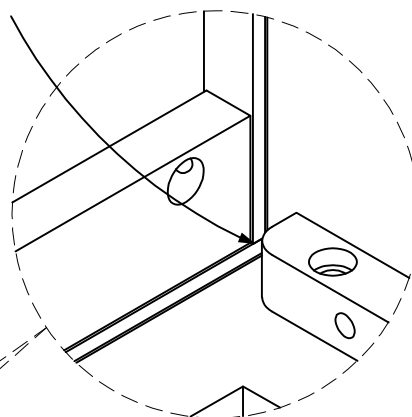
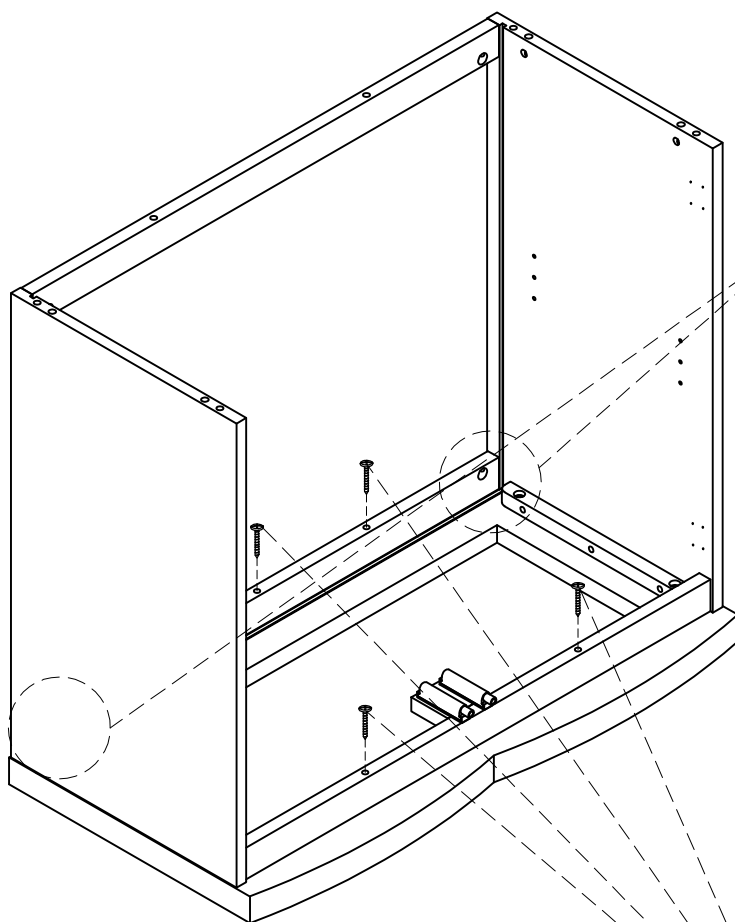
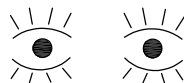


Step 6

Make sure the grooves are aligned and then insert the Screw (9) into its corresponding holes. Use your screwdriver to tighten the screws into place.

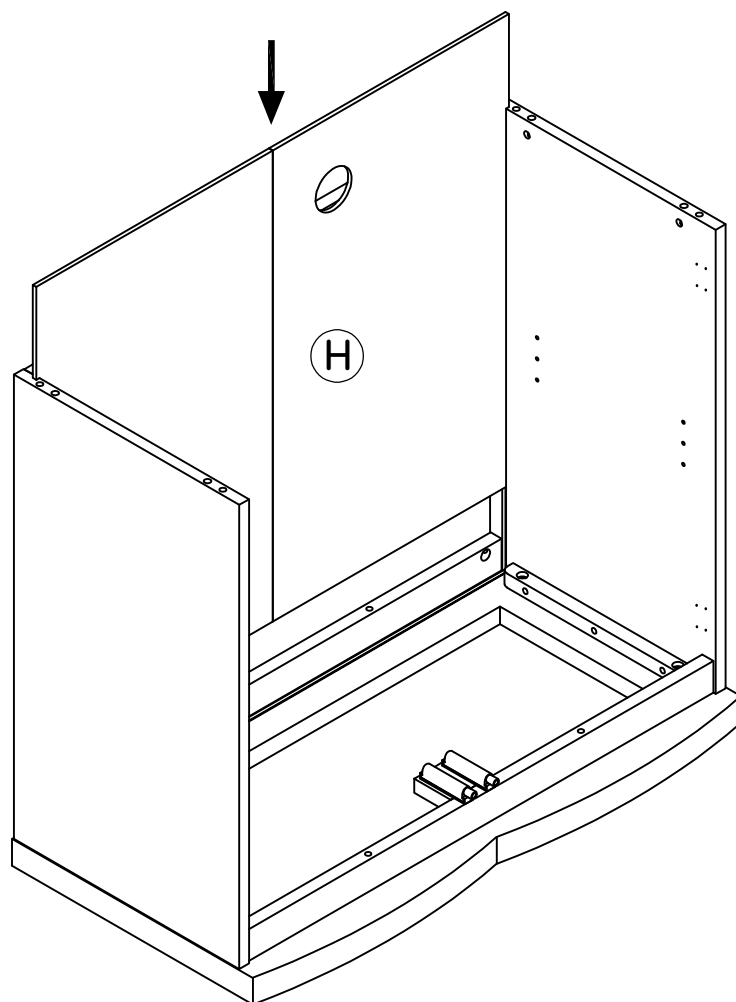


Tip: The grooves need to be aligned



Step 7

Unfold the Back Panel (H) and slide it into place on the cabinet.
It should fit smoothly into the grooves.

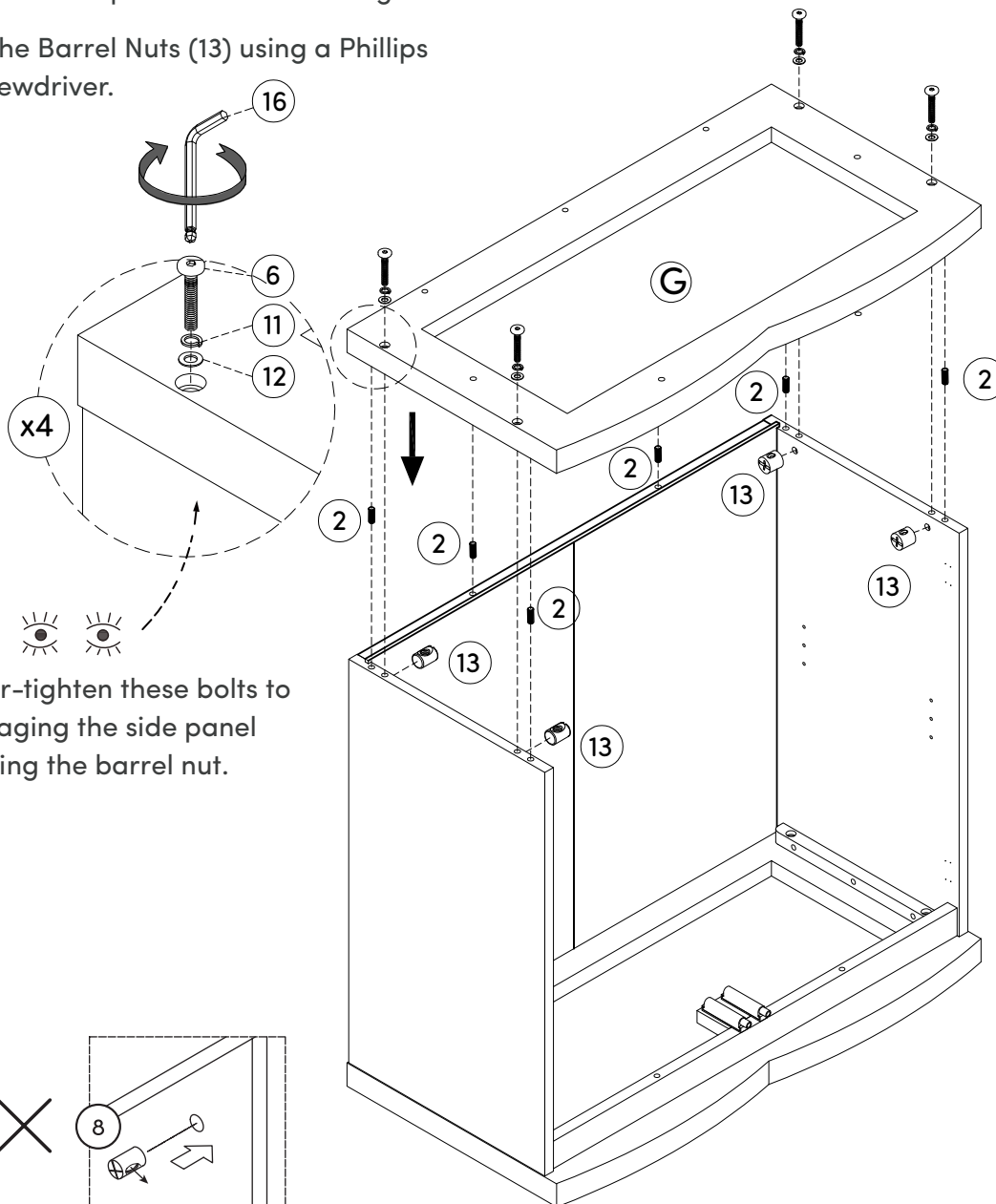


Step 8

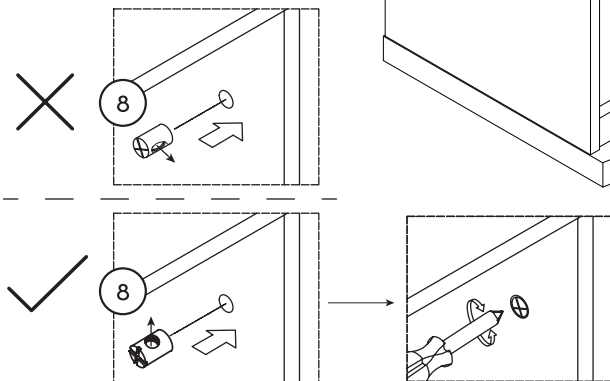
- (2)  x6 pcs
 (6)  x4 pcs
 (11)  x4 pcs
 (12)  x4 pcs
 (13)  x4 pcs

Now, attach the Bottom Panel (G) to the pieces you assembled in Step 7. Secure in place using the Wooden Dowels (2), then slide the Spring Washer (11) and the Flat Washer (12) on to the Bolt (6) and use these parts and the Allen key (16) to secure the panel and cabinet together.

Tighten the Barrel Nuts (13) using a Phillips head screwdriver.



Do not over-tighten these bolts to avoid damaging the side panel when using the barrel nut.

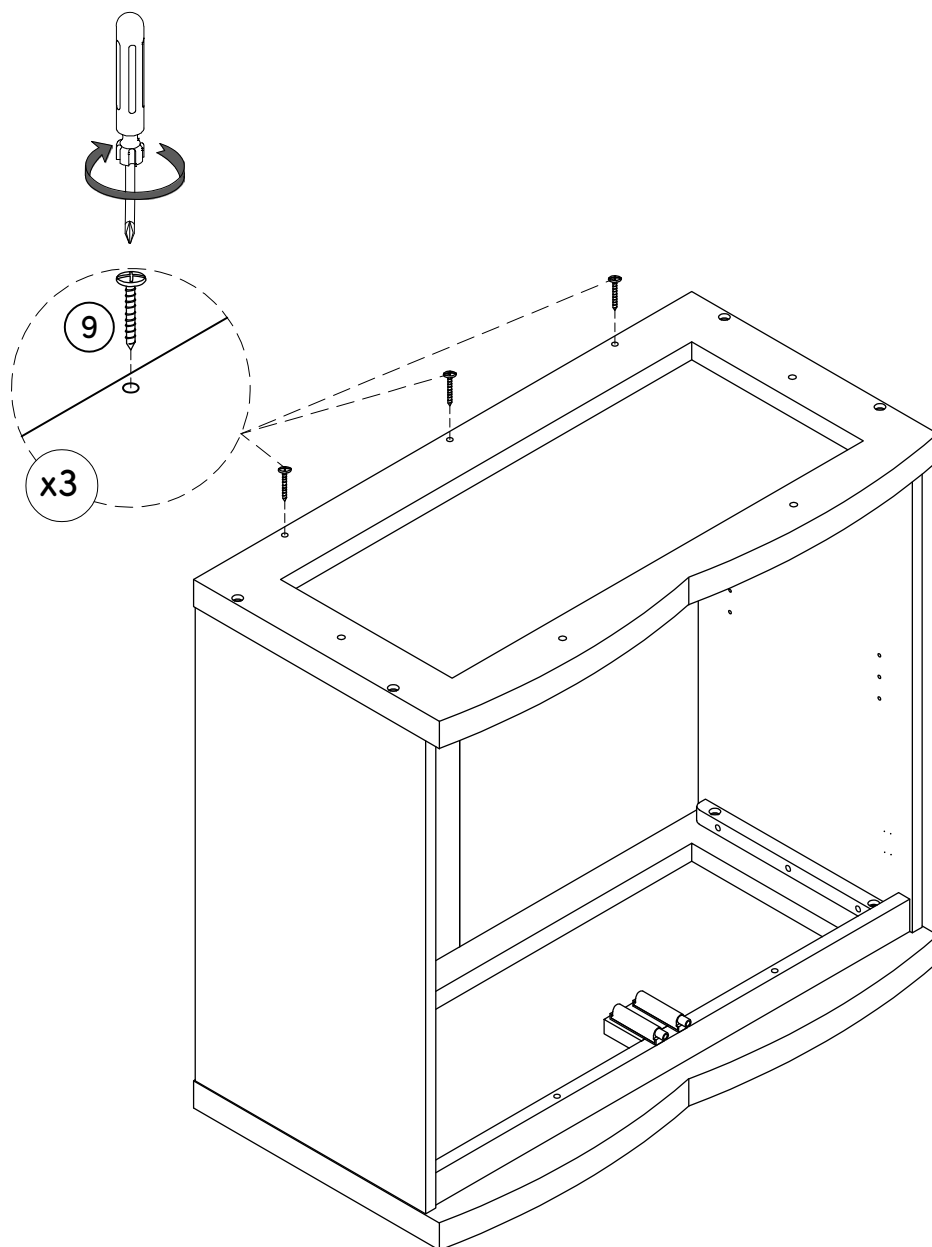
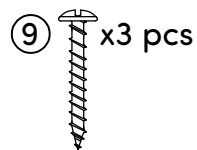


Helpful Tip:

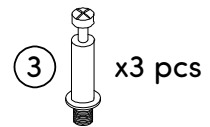
If the Bolt (6) isn't lining up with the Barrel Nut (13), use a screwdriver to slightly turn the Barrel Nut (13) into place.

Step 9

Next, insert the Screw (9) into its designated holes on the panel as shown below. Tighten to 100%.

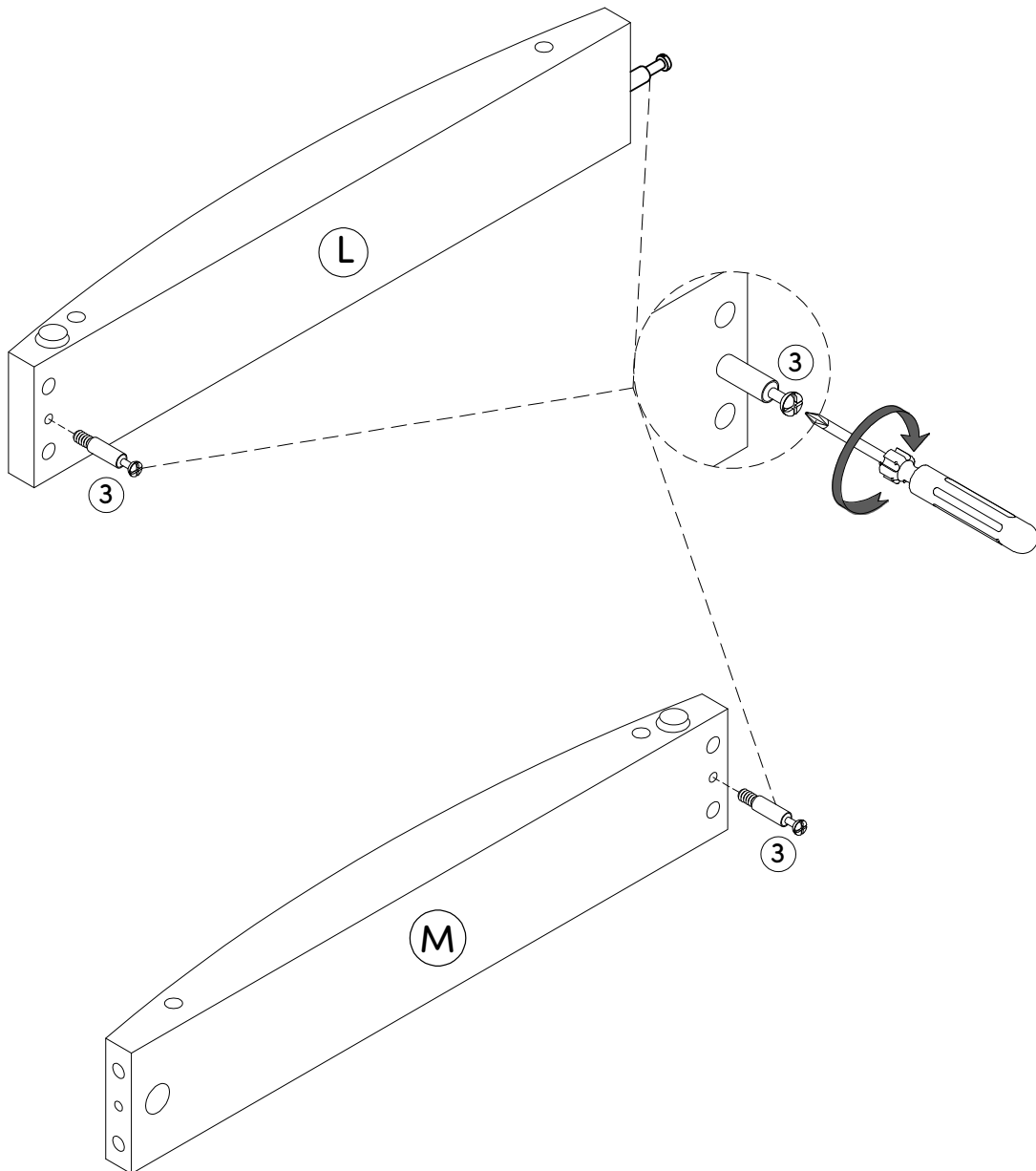


Step 10



Okay, time to attach the Base Frame!

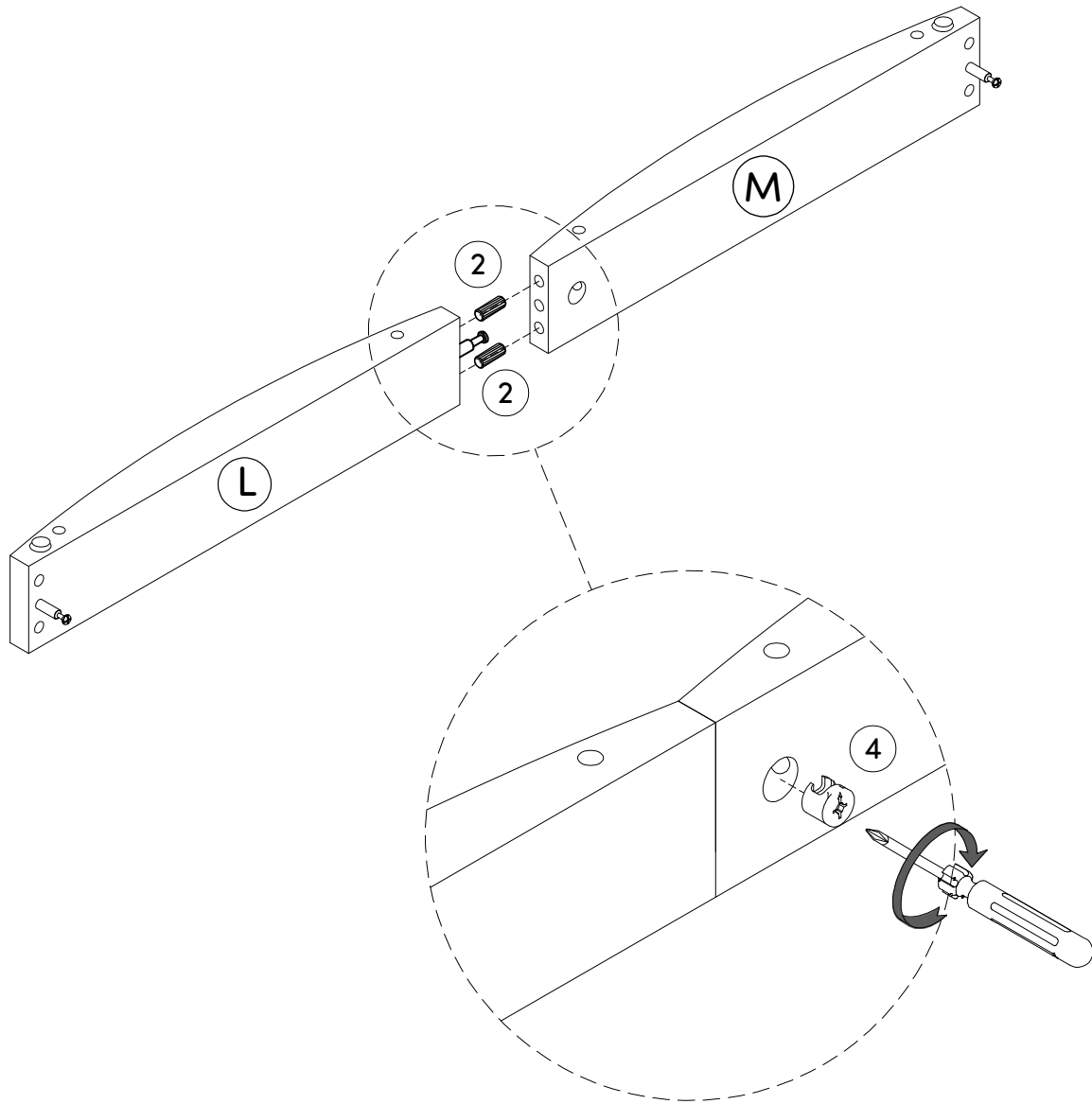
First, screw the Cam Bolts (3) into the Base-Left Front Panel (L) and Base-Right Front Panel (M).



Step 11

②  x2 pcs ④  x1 pc

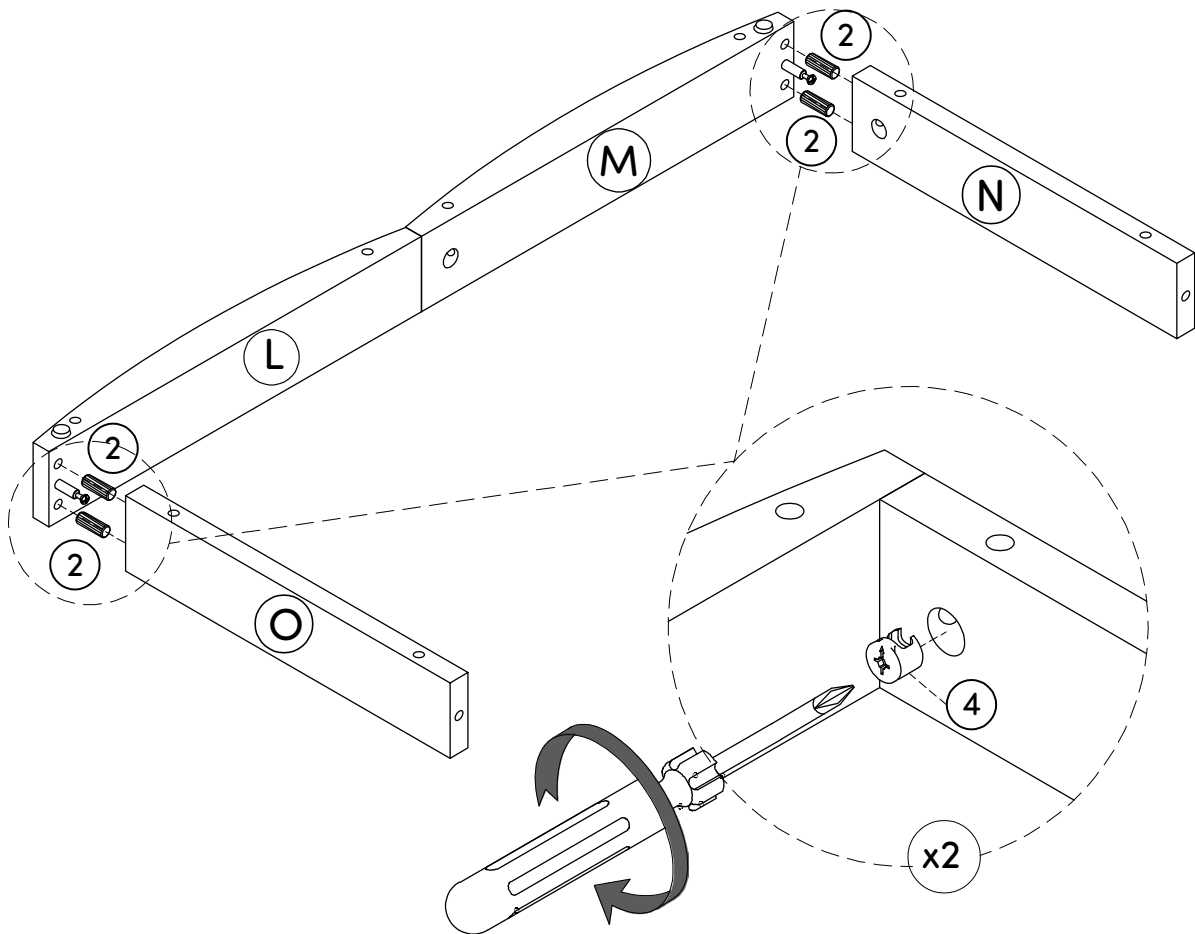
Next, attach the Base-Left Front Panel (L) to the Base-Right Front Panel (M) using the Wooden Dowels (2). Secure in place using the Cam Locks (4).



Step 12

②  x4 pcs ④  x2 pcs

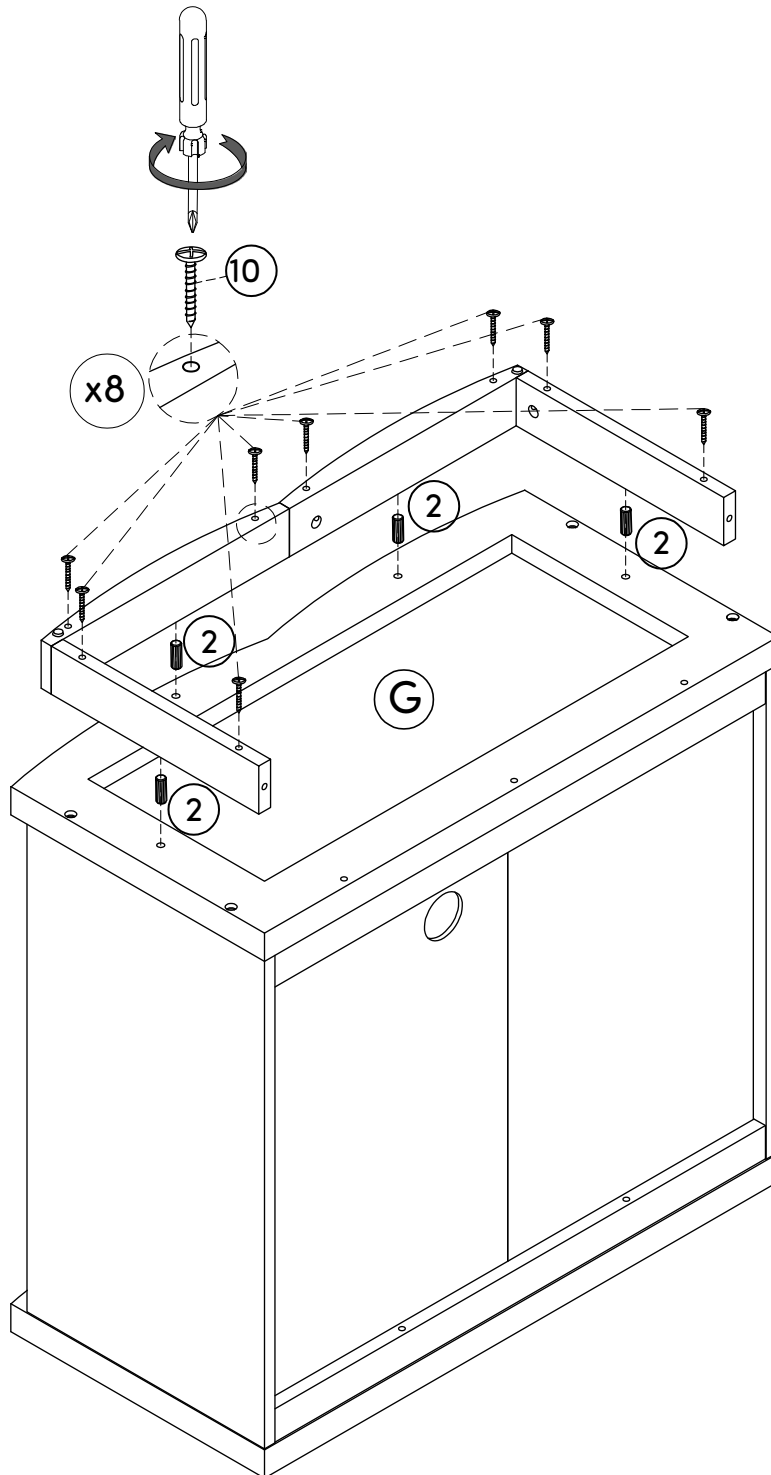
Attach the Base-Left Side Panel (O) and the Base-Right Side Panel (N) to the pieces you assembled in Step 11. Secure in place using the Wooden Dowels (2) and the Cam Locks (4).



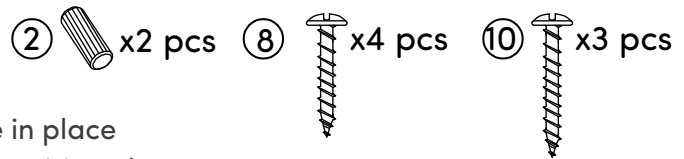
Step 13

② x4 pcs ⑩ x8 pcs

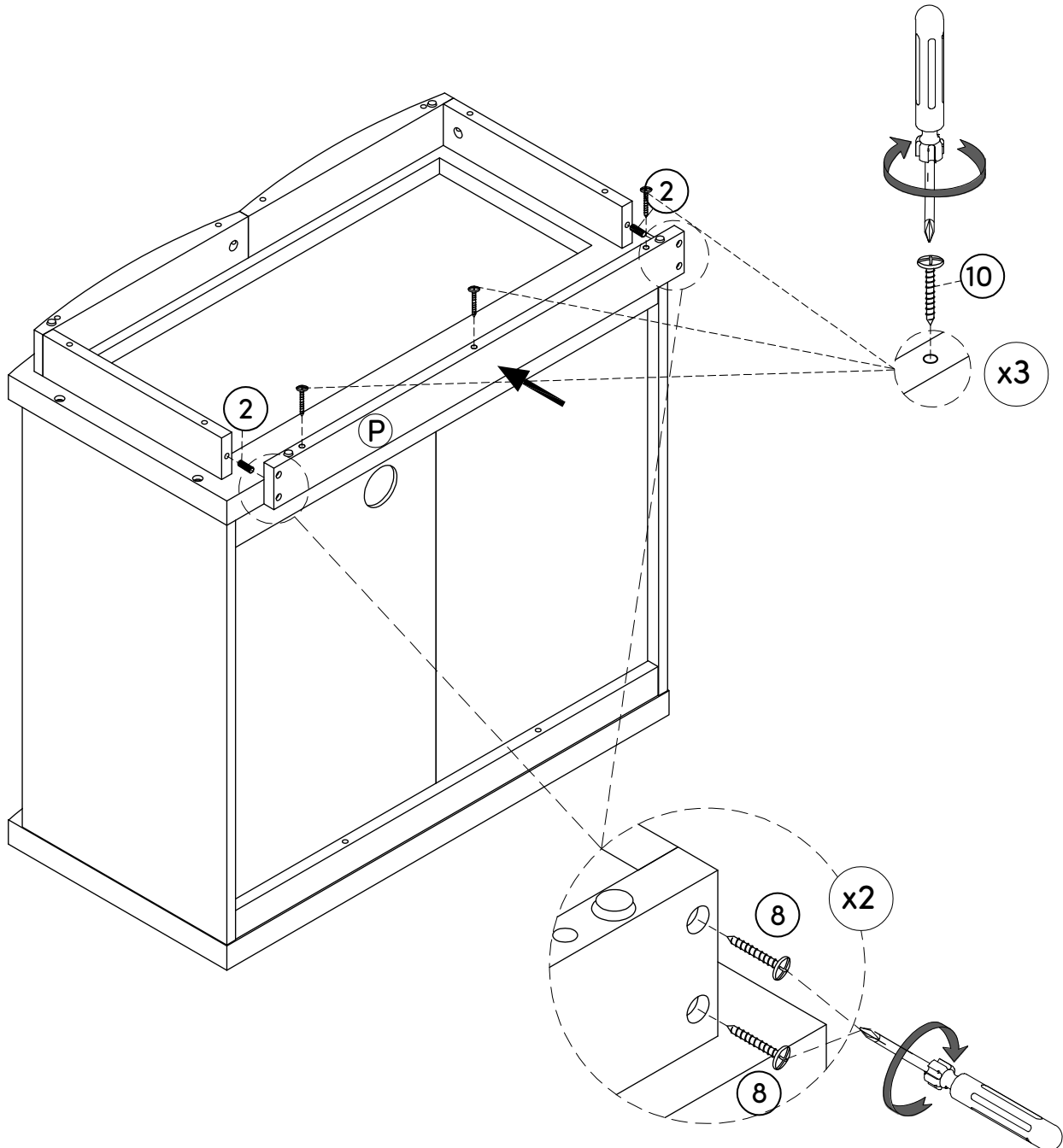
Attach the pieces you assembled in Step 12 to the cabinet and secure into place using the Screw (10).



Step 14



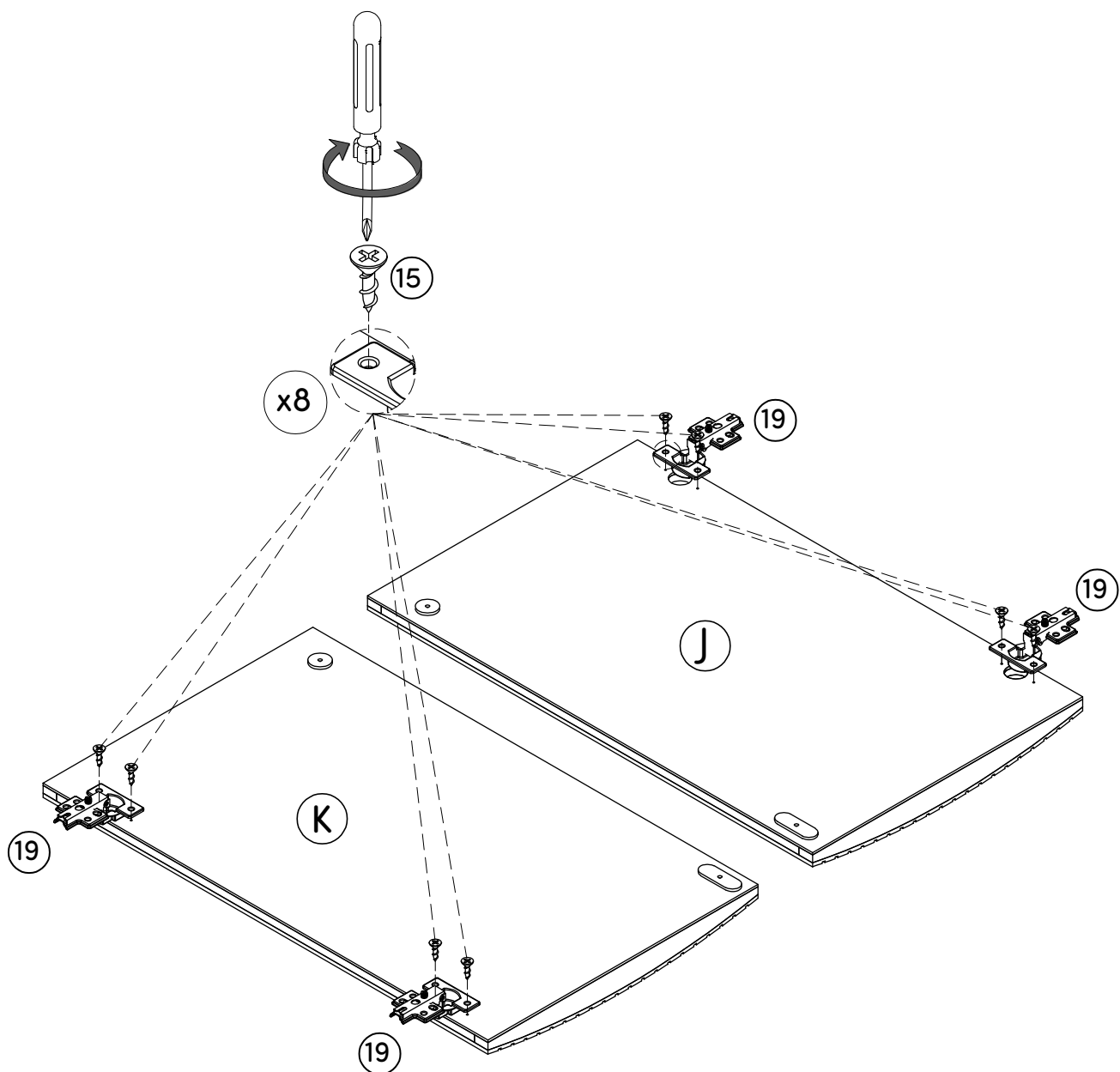
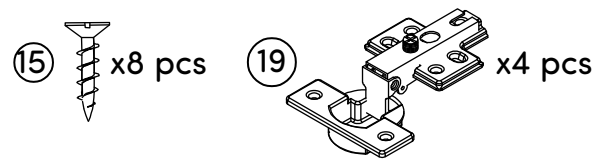
Last, attach the Base-Back Panel (P) secure in place using the Wooden Dowels (2), using the Screw (8) and the Screw (10).



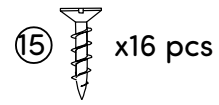
Step 15

Let's get started on the doors!

Attach the Hinges (19) to the doors using two of the Screws (15) per hinge.



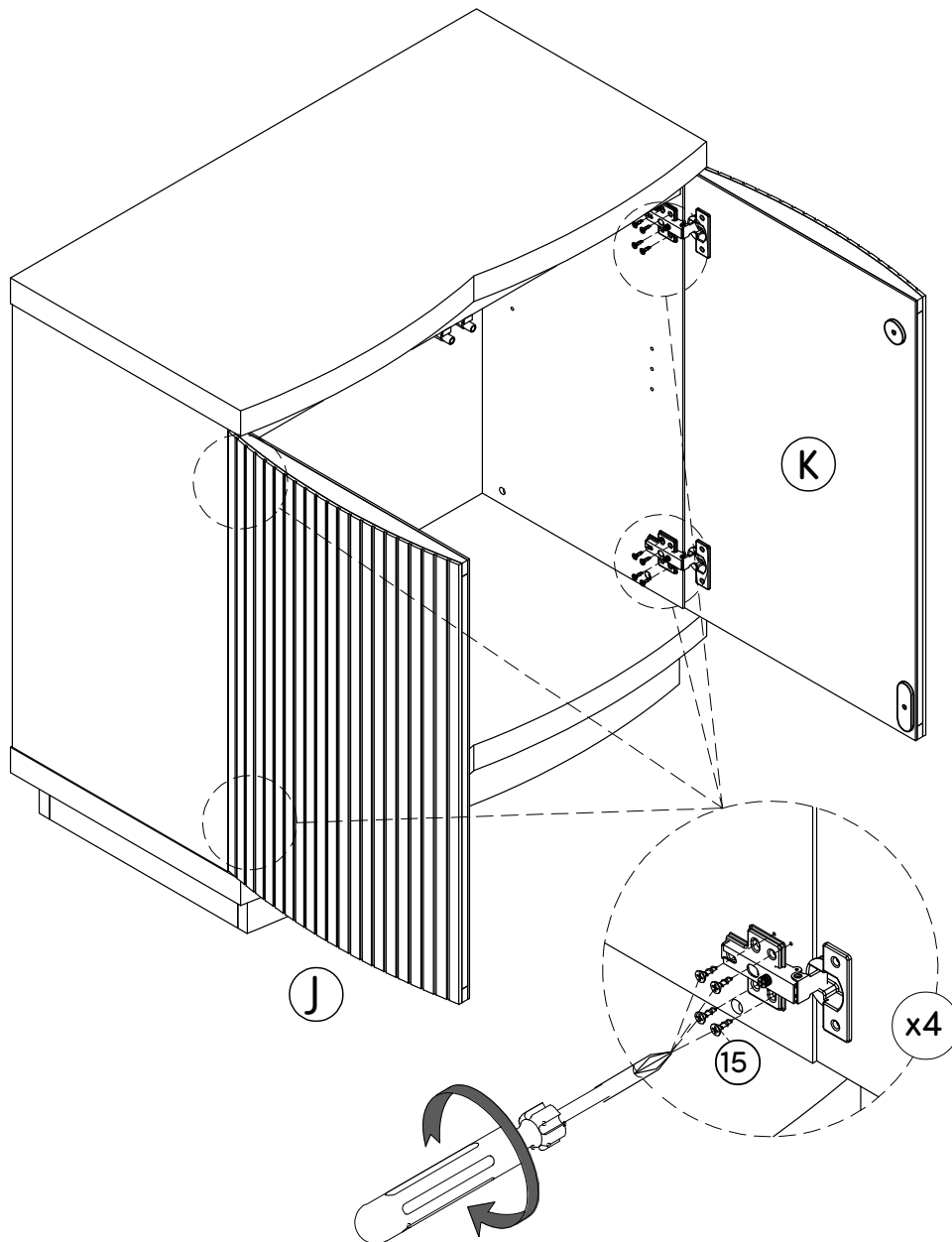
Step 16



Time to get out those muscles! Flip the unit upright (you might need a friend for this) and then it's time to attach the doors!

Attach the doors (K)(J) by securing the Hinges (19) to the cabinet using the Screws (15).

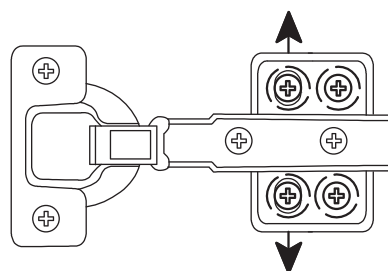
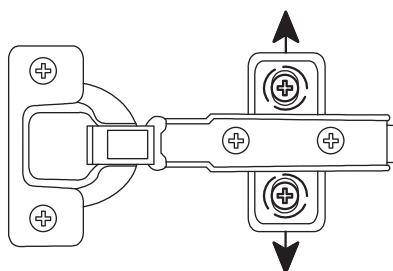
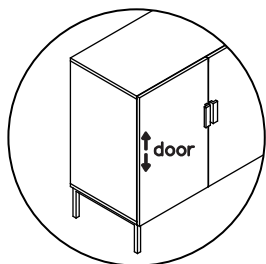
You'll need four screws per hinge.



Is your cabinet door looking crooked or unevenly spaced?

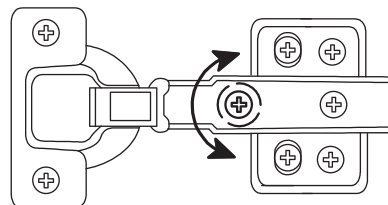
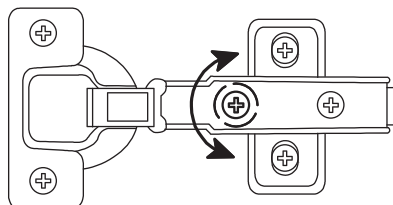
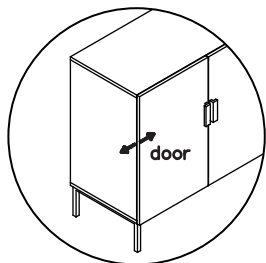
Then you've come to the right place. Follow the illustrations below to get your cabinet door aligned and ready for action.

If your door is too low or too high...



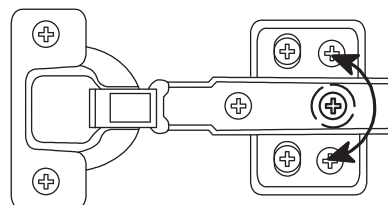
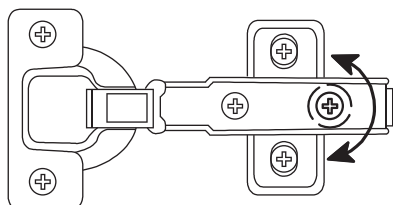
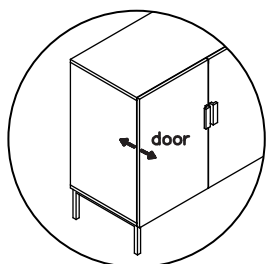
Loosen the height screws, then move the door up or down to make it level.

If the space between your doors is off...



Loosen the side-to-side screws, then screw counter-clockwise to make the gap wider or clockwise to close any gaps.

If you need to adjust the depth of the doors...

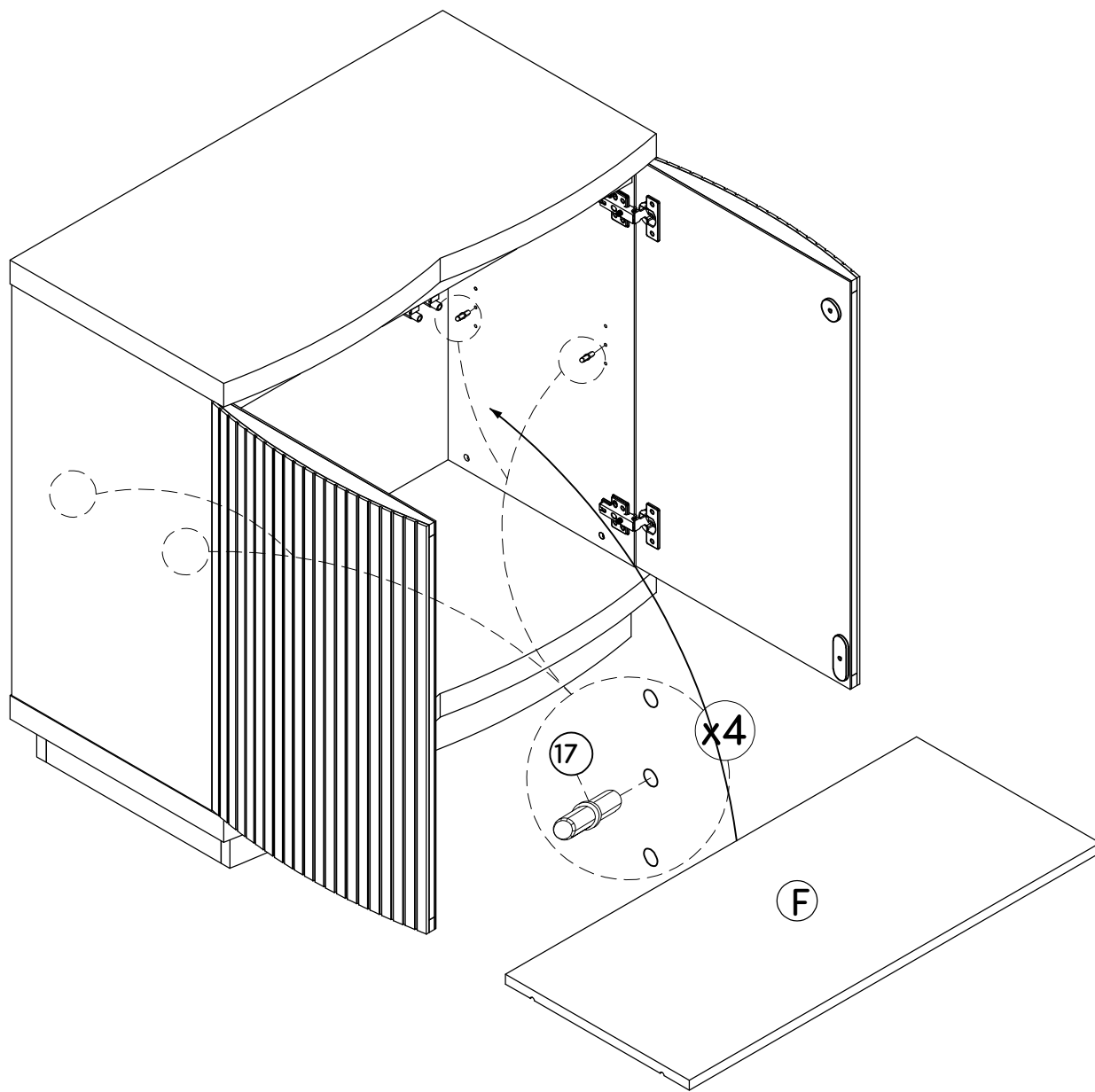


Adjust the in-and-out screws until the door is aligned with the side of the cabinet.

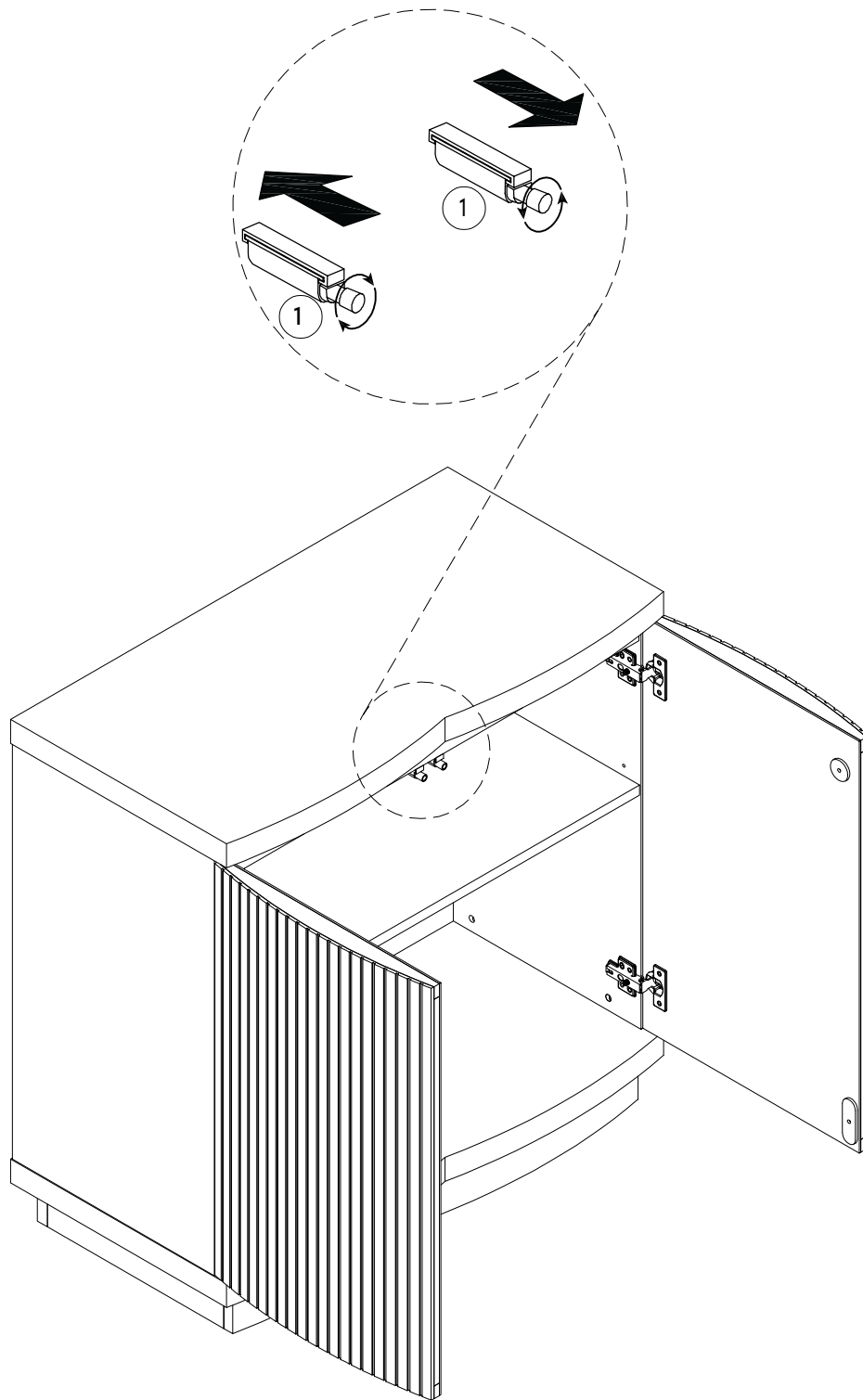
Step 17

⑪⑦ ⑪⑦ x4 pcs

Twist in the Shelf Pins (17) at your desired height and slide the Shelf (F) in the unit.



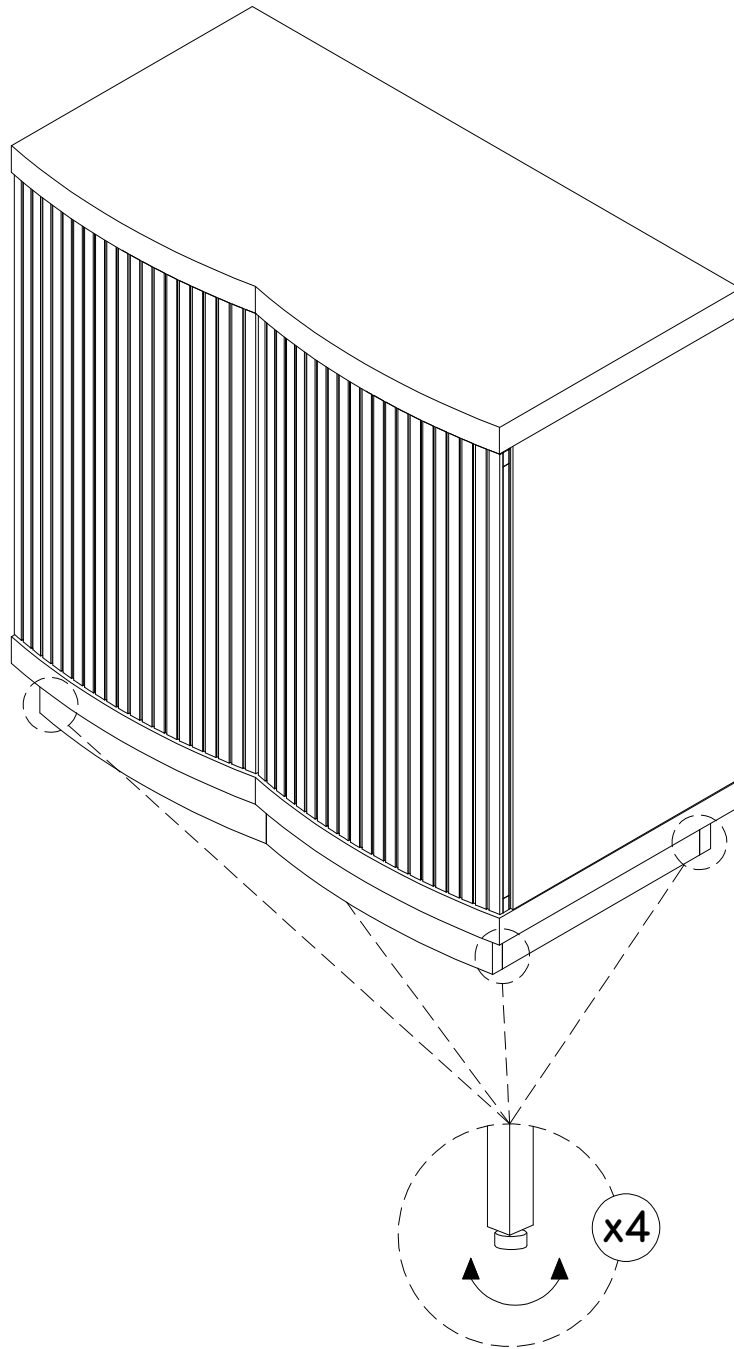
ICYDK*: These push latches are adjustable! This will keep your doors flush with the front frame.



***In Case You Didn't Know**

Step 18

Now go ahead and check that your cabinet is level and not wobbly. If it's looking a little unlevel, adjust the levelers on the feet until it's nice and level.



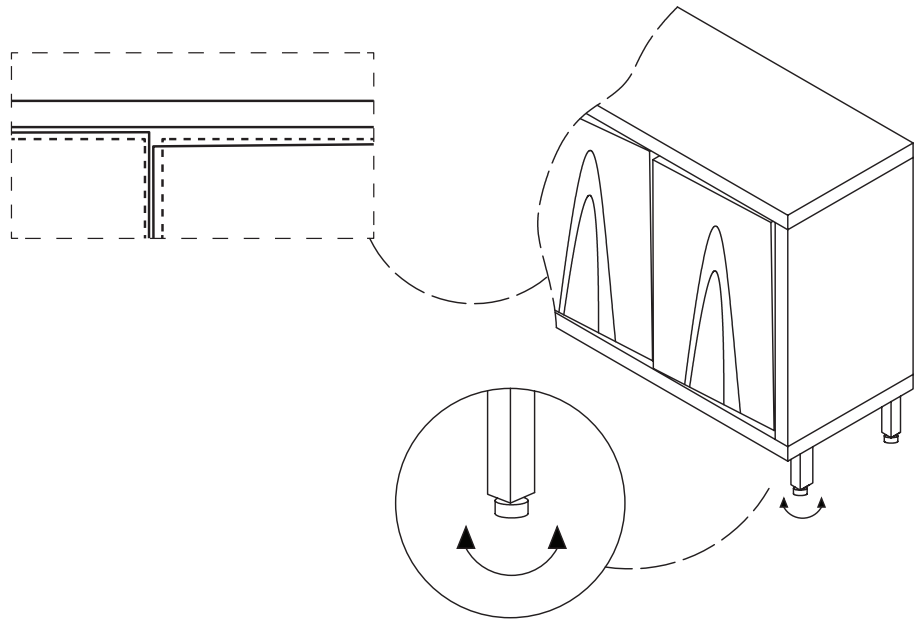
Wobbly or unlevel?

Adjust feet until stable!

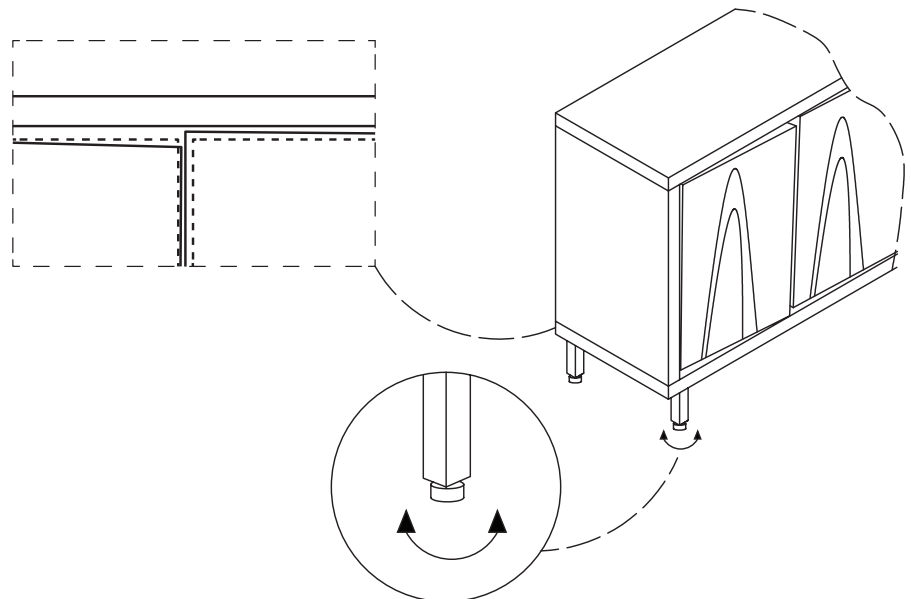
Is your cabinet door looking crooked or unevenly spaced? (Cont.)

If you're still having trouble lining everything up, your next step should be to adjust the leveling glides to square up the cabinet and doors and make sure things are level. Follow the instructions below:

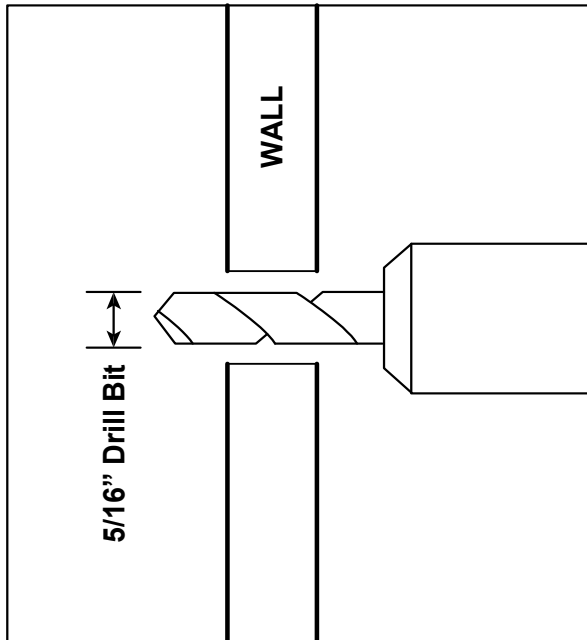
If the right door appears to be hanging low, you can adjust the adjustable leveler on the front right until the door is better aligned.



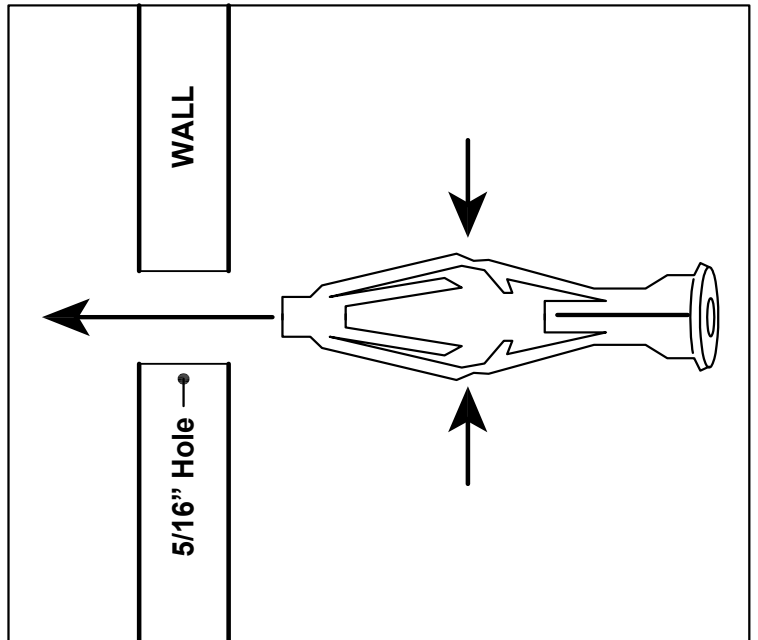
If the left door appears to be hanging low, you can adjust the adjustable leveler on the front left until the door is better aligned.



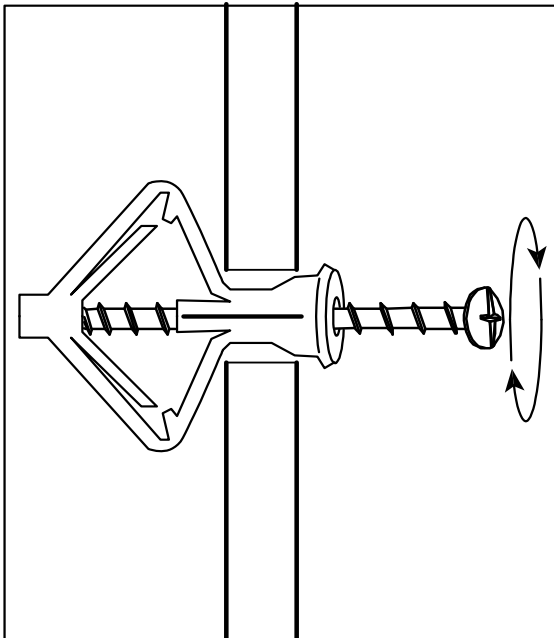
How to Use Drywall Anchors



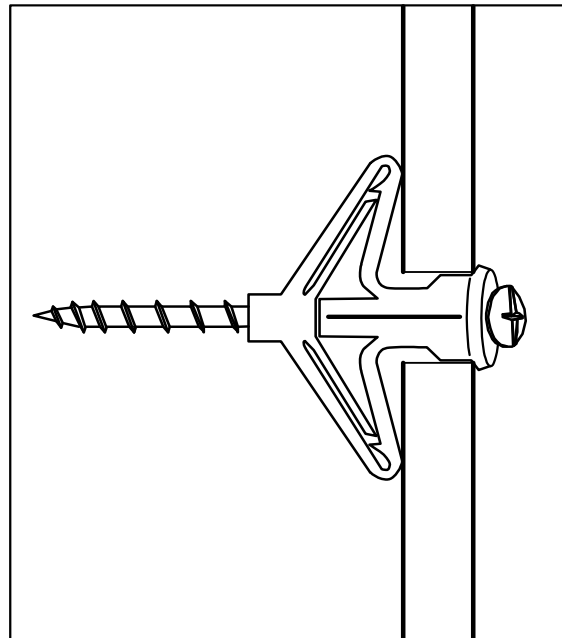
1. Drill hole with 5/16" bit.



2. Pinch and insert.



3. Begin tightening.



4. Anchor is secure when screw is tightened to 100%.

Step 19



x2 pcs

(21)



x1 pc

(22)



x2 pcs

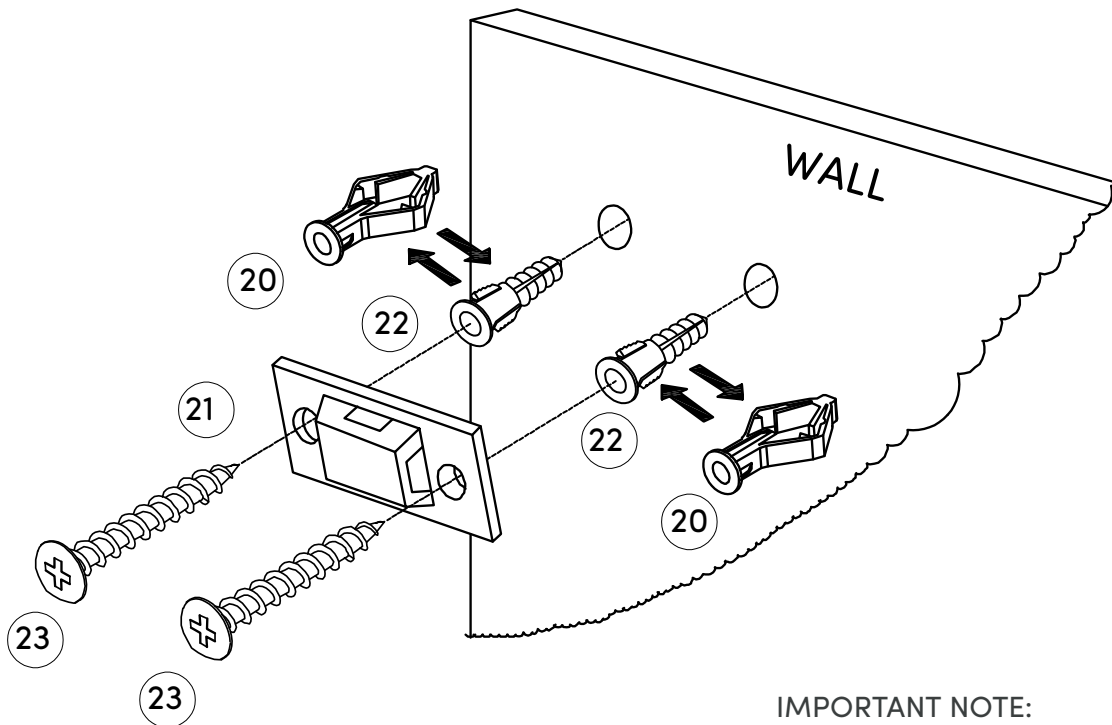
(23)



x2 pcs

Safety first! Use the wall anchor to secure your storage unit to the wall. You'll need a drill and proper sized drill bit for this step.

First drill a hole for the proper wall anchor into the wall. Insert the Wall Anchor (20) or (22) in the hole, then secure the Plastic Bracket (21) to the wall using the Screw (23).



IMPORTANT NOTE:

Non-Drywall Anchor (22) requires a 1/4" Drill Bit
Drywall Anchor (20) requires a 5/16" Drill Bit.

IMPORTANT NOTE:

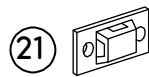
Young children (and/or pets) can be seriously injured by tipping furniture units.

You must install the provided anti-tip kit hardware solution, as instructed, to prevent the furniture unit(s) from tipping over - which could possibly lead to injuries or damage.

The provided anti-tip kit hardware solution is intended only as an additional safety measure & deterrent; it is not a substitute for proper adult supervision.

The provided anti-tip kit hardware solution is not an earthquake restraint. If you wish to add the extra security of earthquake restraints, they must be purchased & installed separately.

Step 20



x1 pc

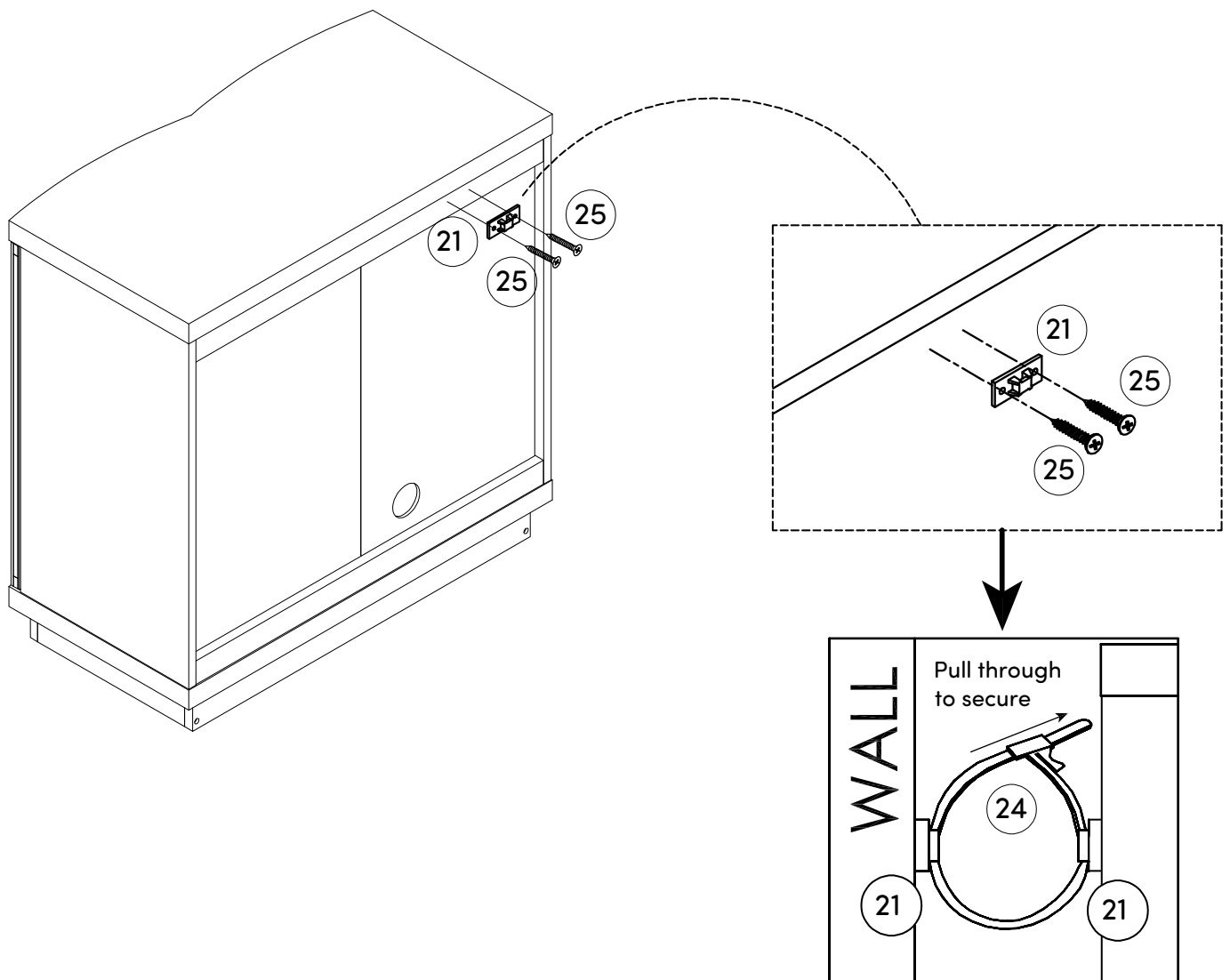


x1 PC



x2 pc

And now for the final step! Attach the Plastic Bracket (21) to the cabinet using the Screws (25). Finally, thread the Plastic Strap (24) through the Plastic Bracket (21) to secure the cabinet to the wall.



No heartburn, when we handle the return

Give us a call **1-866-619-1004** or shoot us a message
at **help@nathanjames.com** we will issue you a free
replacement with **zero hassle**.

Our way



Give us a call



Replacement



You

Their way



Re-package item



Schedule pick up



Track package



Replacement



You

We really don't want you to go through the hassle of re-packaging your item
and sending it back, because let's be honest...nobody has time for that.

Safety first, fun later

We want your Enloe Storage Cabinet to last as long as possible, so we recommend that you tighten the screws 2 weeks after assembly and for added safety check the tightness of all screws every 2 months.

For proper care and treatment of wood and metal please check our website at NathanJames.com/products

Safe use of this product starts with you.

Use this storage cabinet responsibly with the primary concern for your safety. Follow assembly instructions carefully and inspect product upon receipt and each use.

Nathan James and its parent companies cannot be held legally responsible for any injuries or death resulted from failure to follow instructions or improper use of this product.

Do not modify the structure of this product in any way.

Our products have been tested to meet specific safety measures as they were originally intended to be sold. Any modifications will present the risk of creating significant safety issues which NJ will not be responsible for.

Proper use

- | | |
|---------------|---|
| DO NOT | use for commercial purposes |
| DO NOT | climb on storage cabinet |
| DO NOT | exceed weight limit |
| DO NOT | leave spilled liquid on storage cabinet |
| DO NOT | use if storage cabinet is damaged or broken |
| DO NOT | make temporary repairs |
| DO NOT | use outdoors |

We are only in business if you're happy

For starters, thanks for being you.

☎ Toll-free at 1-866-619-1004

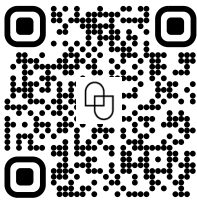
✉ Help@nathanjames.com

🌐 NathanJames.com/help

We do our best to ensure your furniture arrives without any problems, but occasionally mistakes happen—as humans we are imperfect beings. In the event that a part is damaged or missing, we will be more than happy to provide you with replacement part(s) for free.

Warranty

This product comes with a lifetime warranty from the date of purchase. Please use your phone to scan the QR code to register your product or visit <https://goo.gl/i9dk3q>



Did we do alright? Please spread the love!

If you are happy with your product, tell your friends and family about us or even better leave us a review online. Spreading the word gives us the opportunity to make more people happy and keep our prices low for your next purchase.

Brooke Burdon

Founder, Nathan James