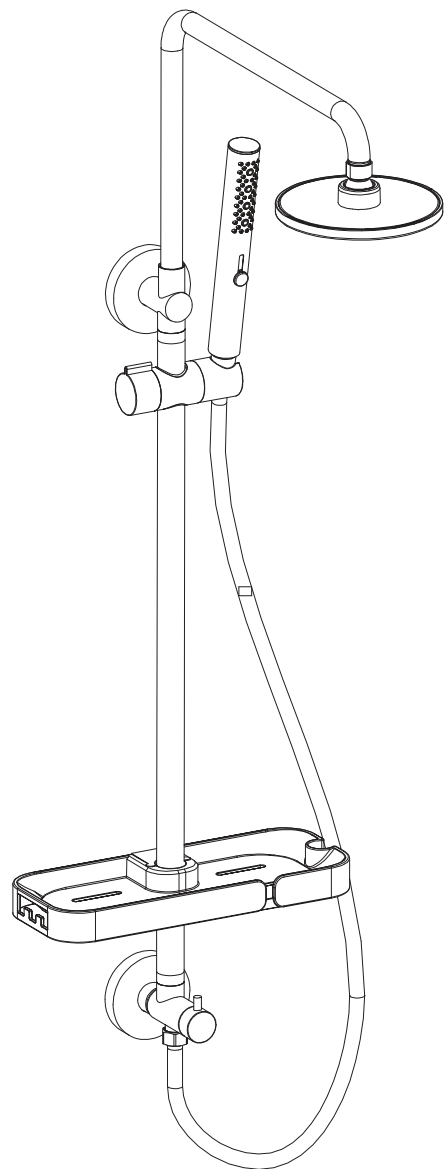
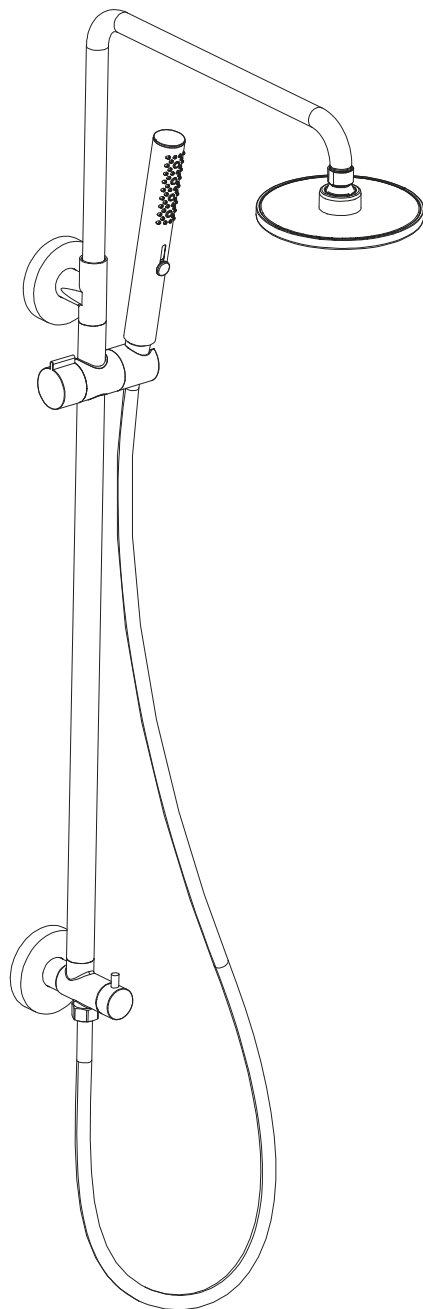
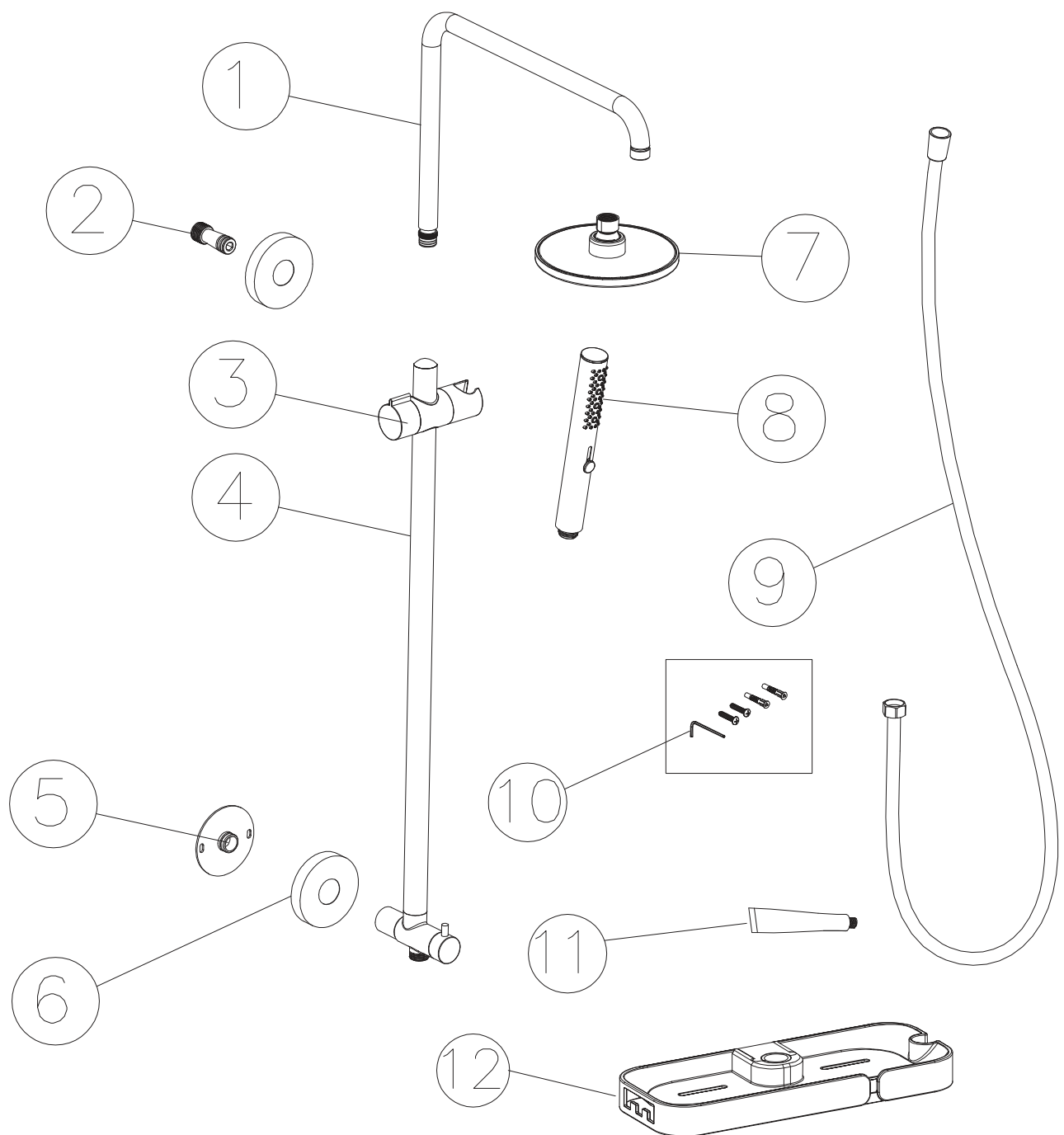
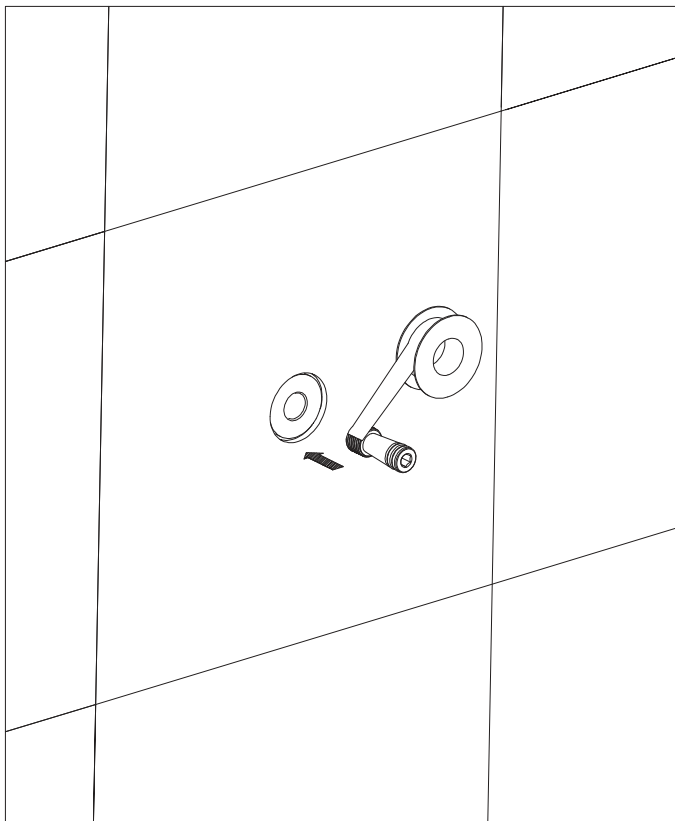


Installation and Operating Instructions

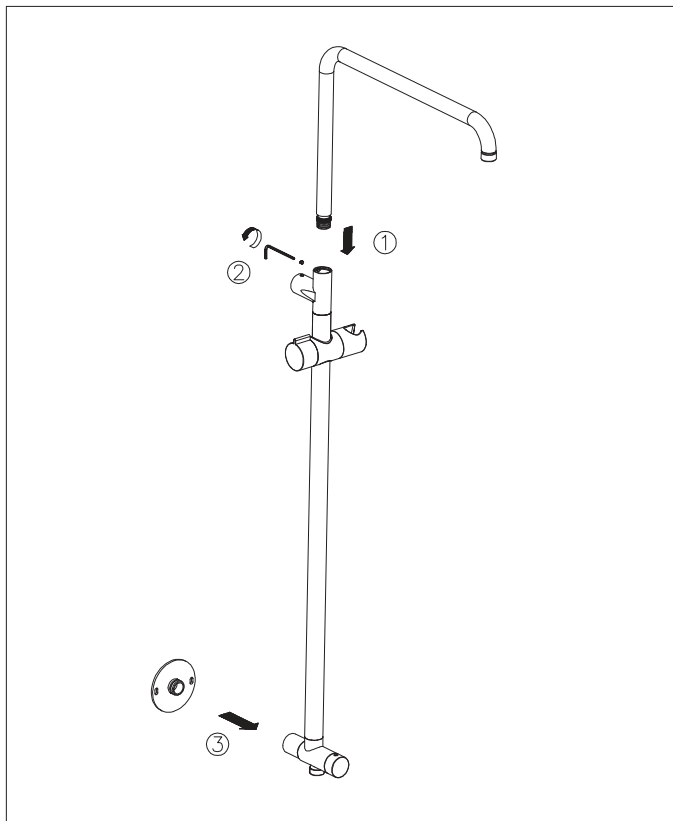


Parts list					
Serial number	Name	Quantity	Serial number	Name	Quantity
1	Seven - shaped pipe	1	7	Top - showerhead	1
2	Water inlet joint	1	8	Hand - showerhead	1
3	Shower holder	1	9	Shower hose	1
4	Main body	1	10	Screw pack	1
5	Fixed seat	1	11	Sealant fix	1
6	Decorative cover	2	12	Storage basket	1

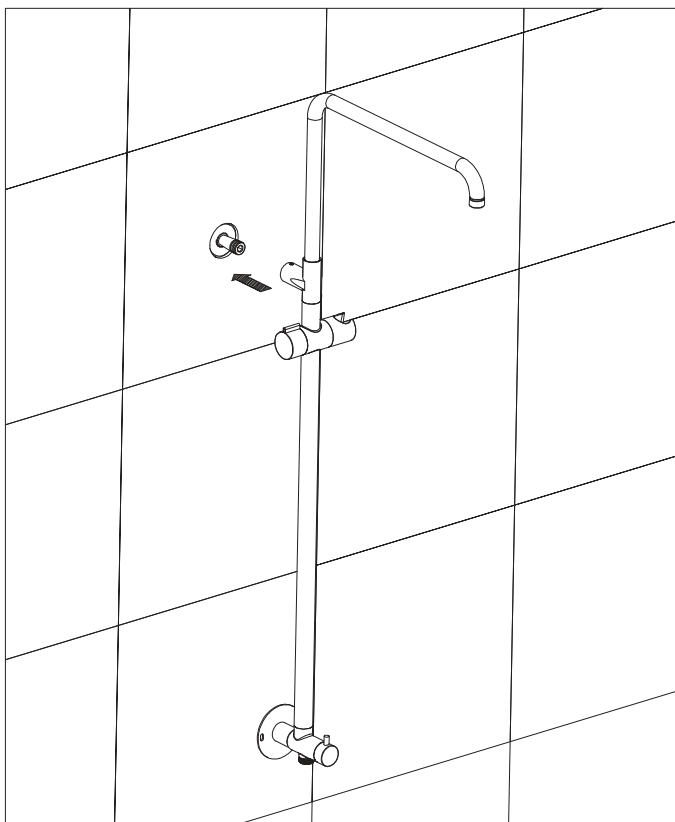




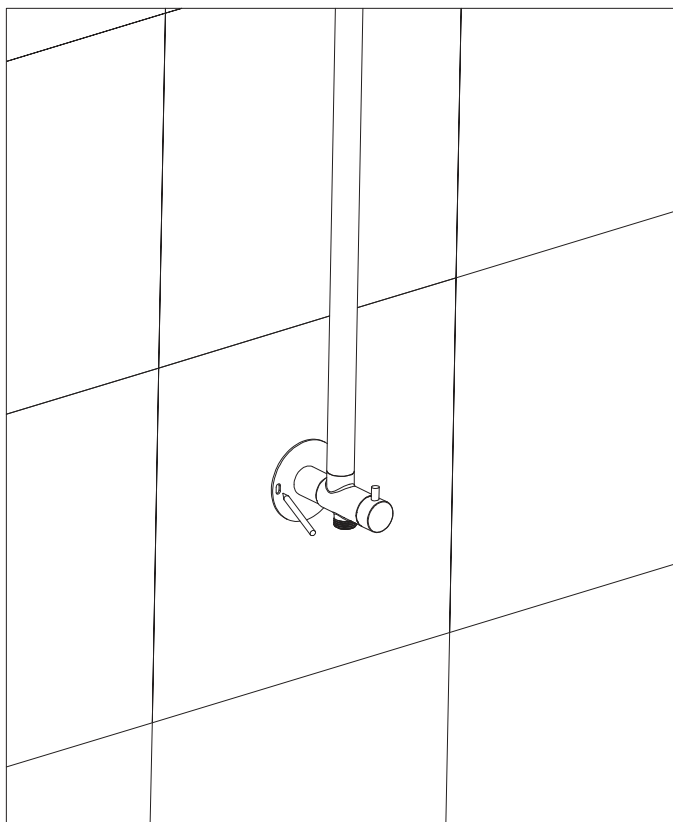
1. Screw the water inlet joint with thread tape onto the water pipe joint on the wall.



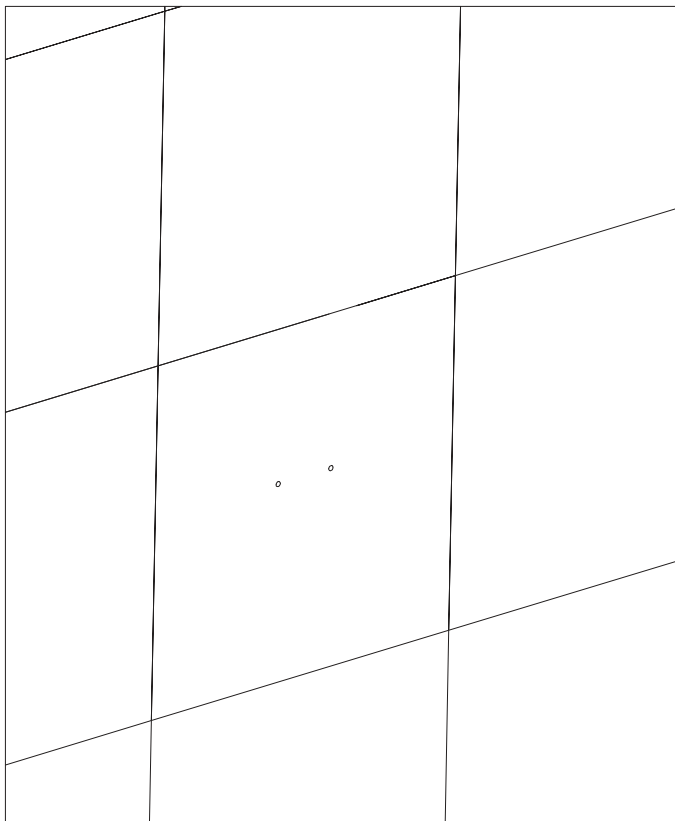
2.1 Take out the main body. Insert the seven - shaped pipe into the main body, then turn it clockwise until it reaches the end, and then turn it counter - clockwise by a certain angle to adjust the direction.
2. 2 Tighten the screws with a hexagon wrench to fix the seven - shaped pipe.
2. 3 Place the fixed seat under the main body.



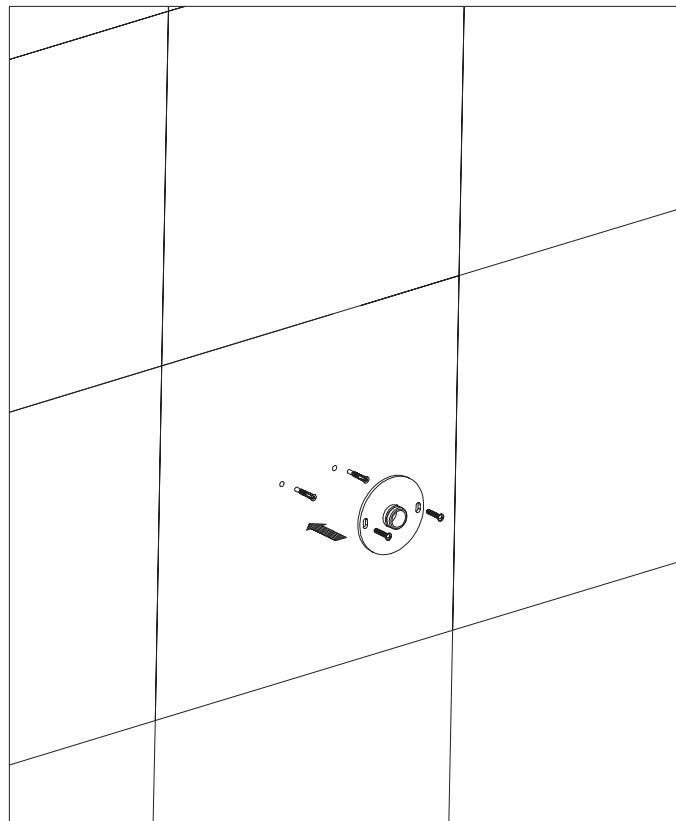
3. Insert the main body into the water inlet joint, make it close to the wall, and check whether the main body is vertical.



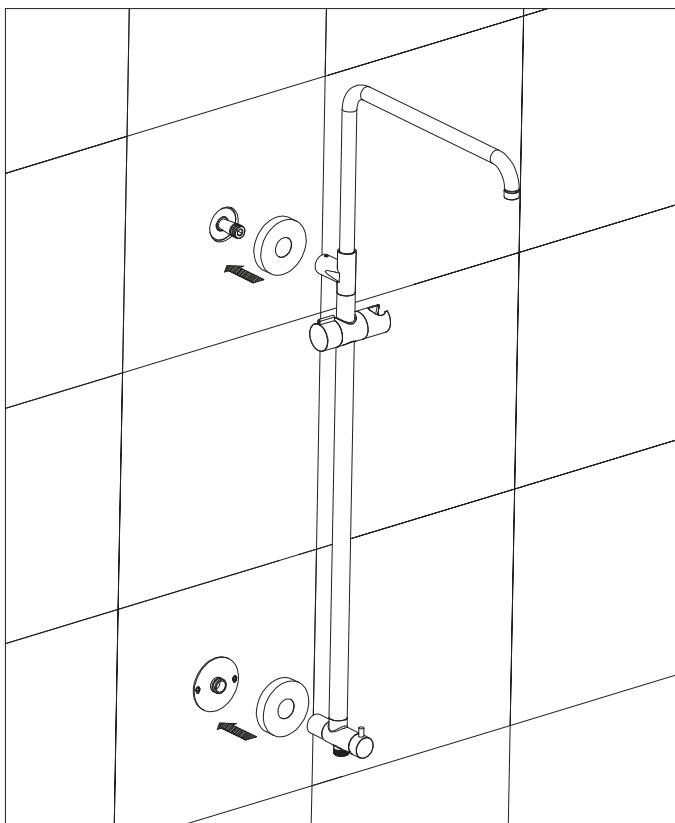
4. Mark the position of the screw hole on the fixed seat. If it is a smooth ceramic tile surface or marble surface, tear off the double - sided adhesive on the back of the shower holder and stick it on the wall. If it is a rough surface, it needs to be fixed with nails.



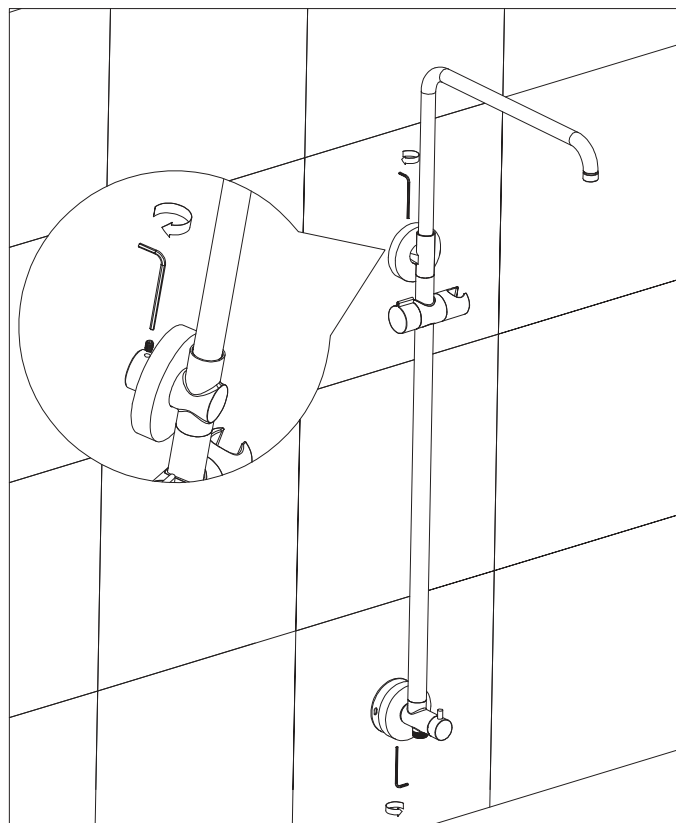
1. Screw the water inlet joint with thread tape onto the water pipe joint on the wall.



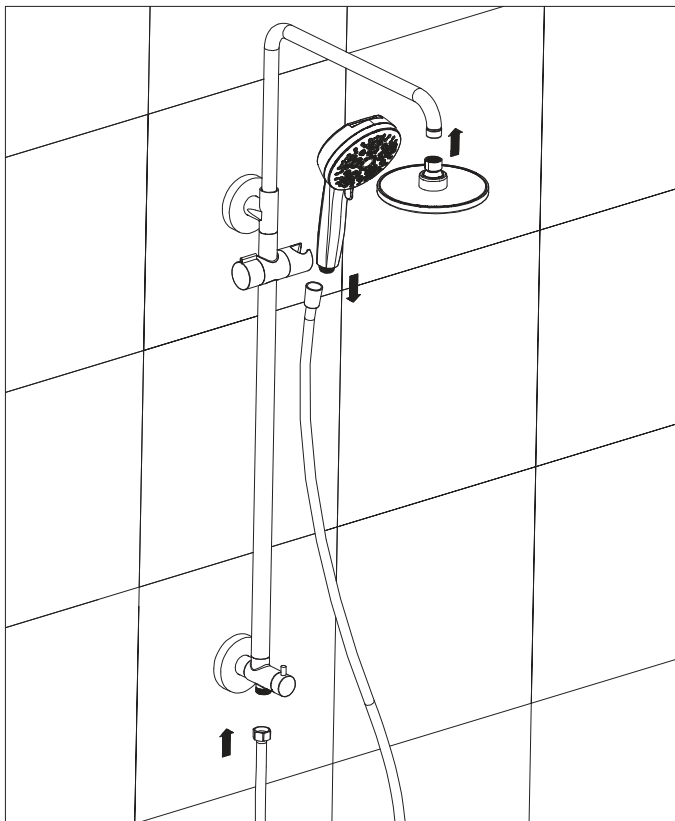
6. Drive the plastic nail into the hole and install the fixing seat on the wall with self - tapping screws.



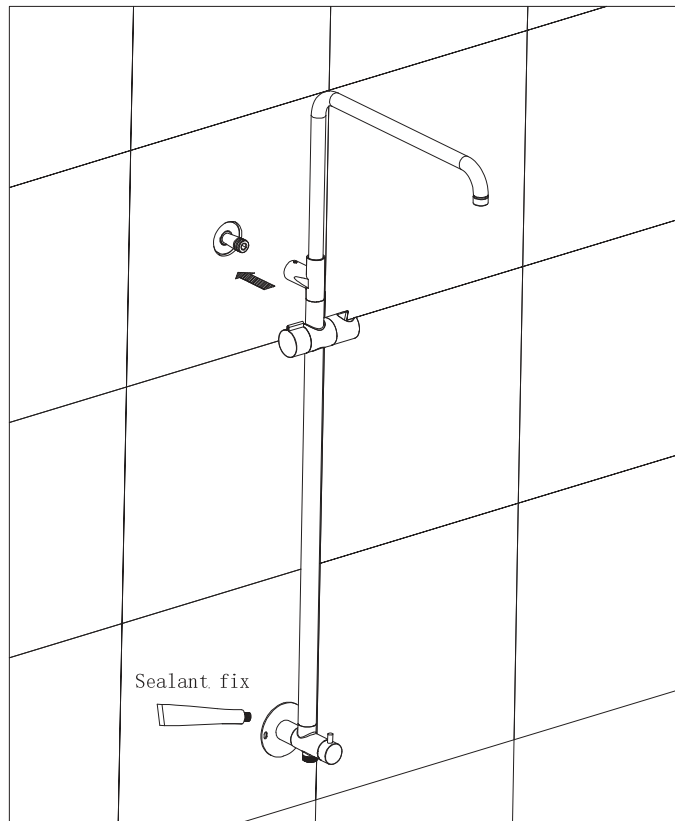
7. Put the two decorative covers on the main body, and then install the main body onto the water inlet joint and the fixing seat.



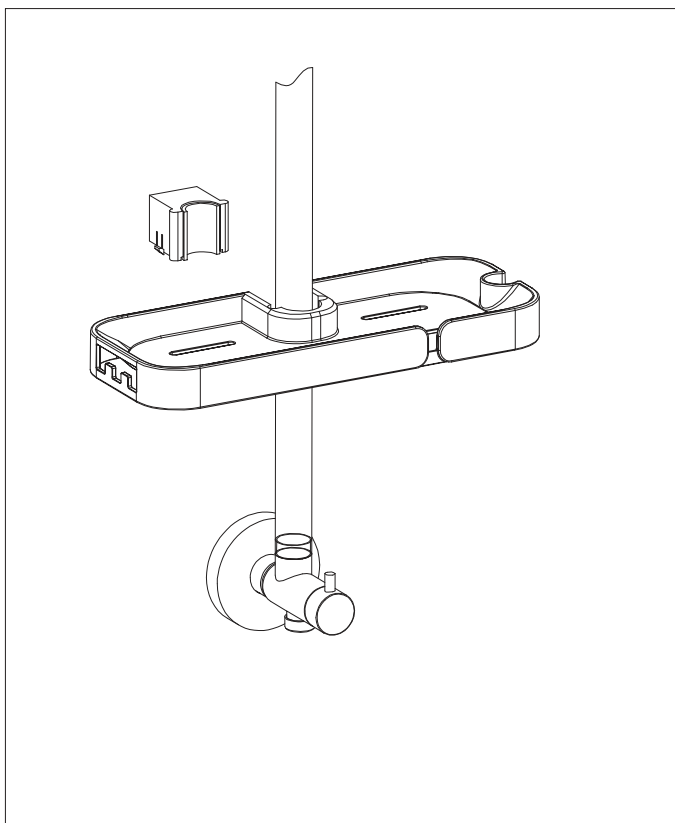
8. Tighten the upper and lower two screws with a hexagon wrench.



9. Install the hand - showerhead and the top - showerhead onto the main body respectively.



10. When the installation wall surface is smooth, steps 4,5 and 6 of drilling holes are changed to the glue - applying method. After installing the main body onto the water inlet joint, apply Sealant fix at the fixed wall seat. Do not move after gluing, and wait for 24 hours until it is fully cured before using.



Put the storage basket onto the pipe and tighten the lower screw.

