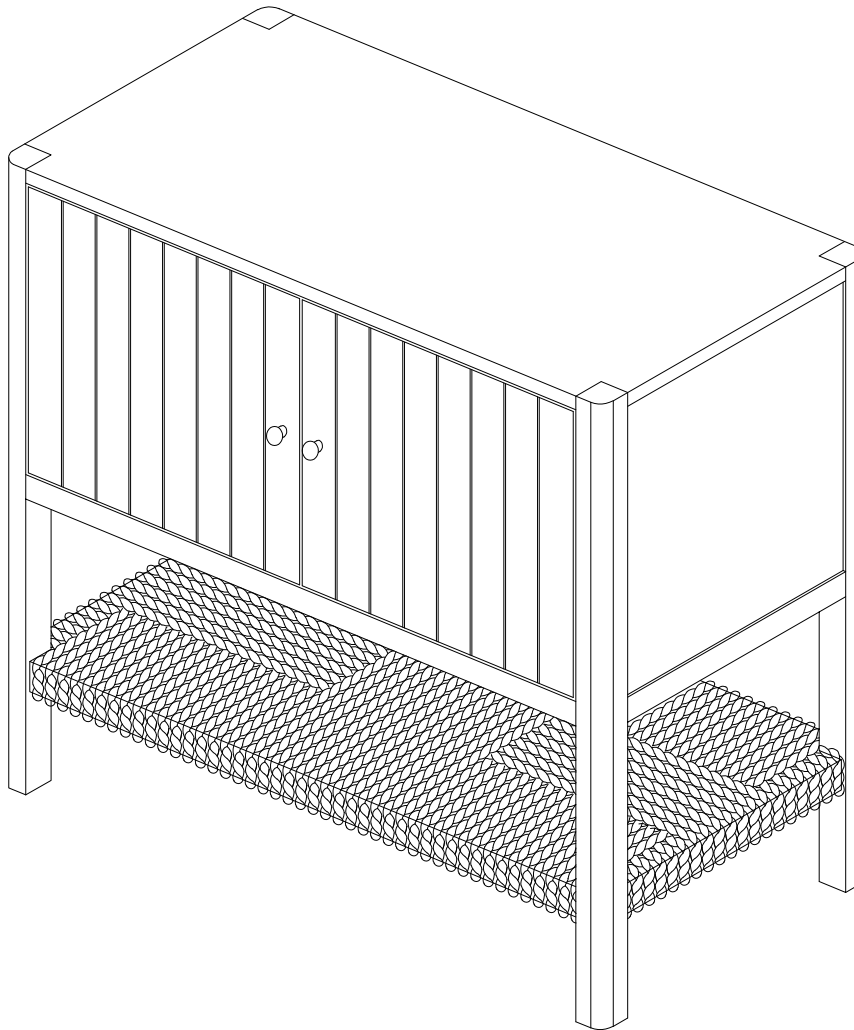


Let's build the

Meads Storage Cabinet

SKU 37840



Scan me!

Free Lifetime
Warranty

nathan james

25-0306-VN

Ok, let's get rolling

This should be easy, just follow our instructions and you will be back to Netflix in no time.

Estimated time for assembly

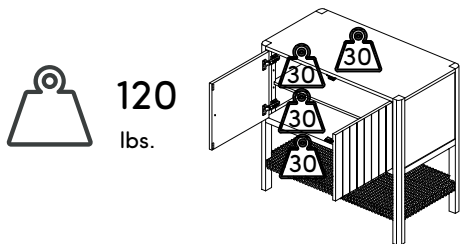


75:00

What you need

- Phillips-head screwdriver
- $\frac{5}{16}$ " Drill Bit OR $\frac{1}{4}$ " Drill Bit
- Drill
- Some of your favourite bubbly or your preferred relaxant
- Use the packaging carton as a working surface to prevent product damage during assembly

Weight Limitation



Total Max. Capacity: 120 lbs
30lbs per shelf

Toll-free at 1-866-619-1004
Help@nathanjames.com
Nathanjames.com/help

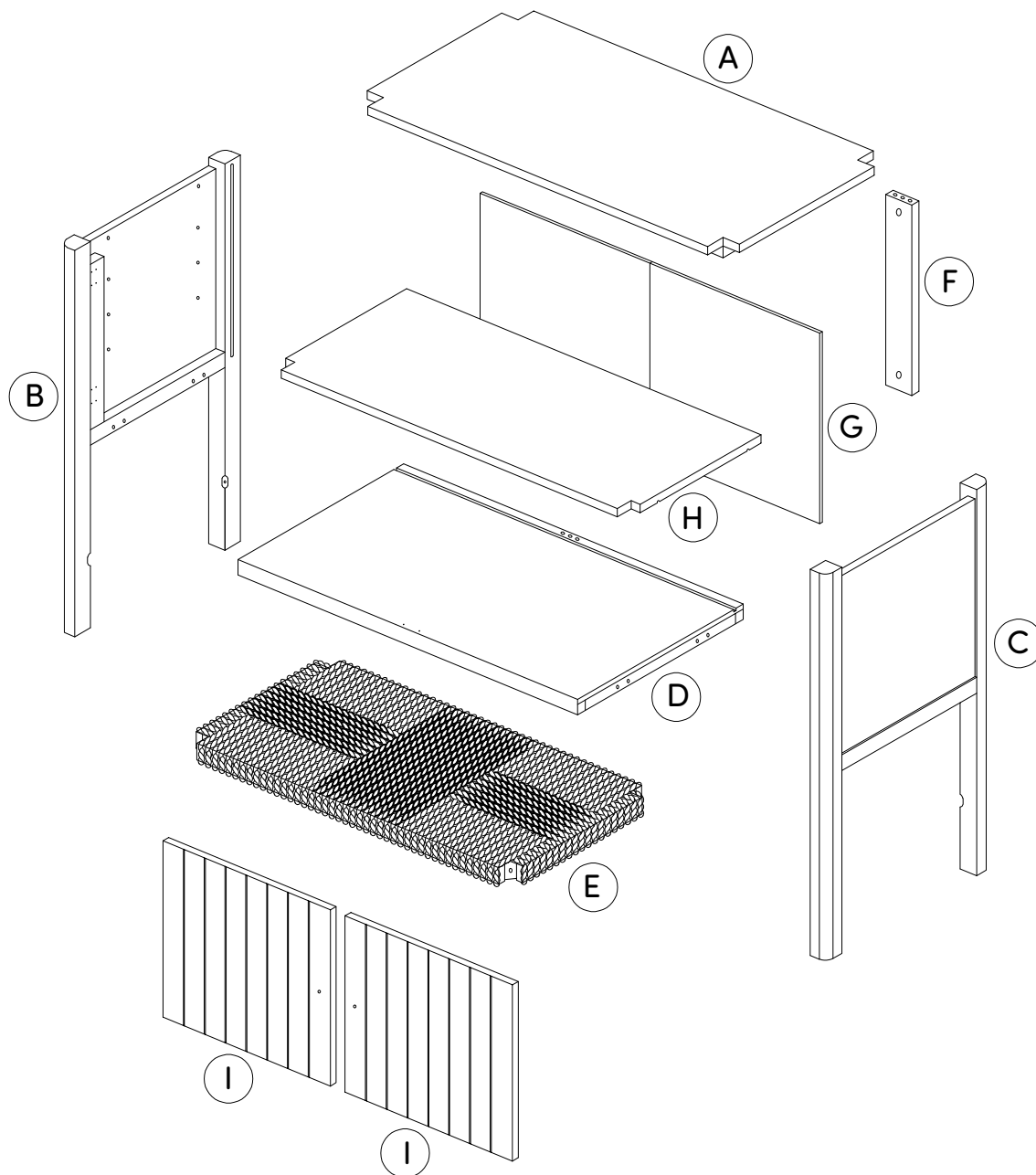
Description		Qty
A	Top Panel	1
B	Left Side Panel	1
C	Right Side Panel	1
D	Bottom Panel	1
E	Bottom shelf	1
F	Back Brace	1
G	Back Panel	1
H	Shelf	1
I	Doors	2

Scan me!

Free Lifetime
Warranty



The goods



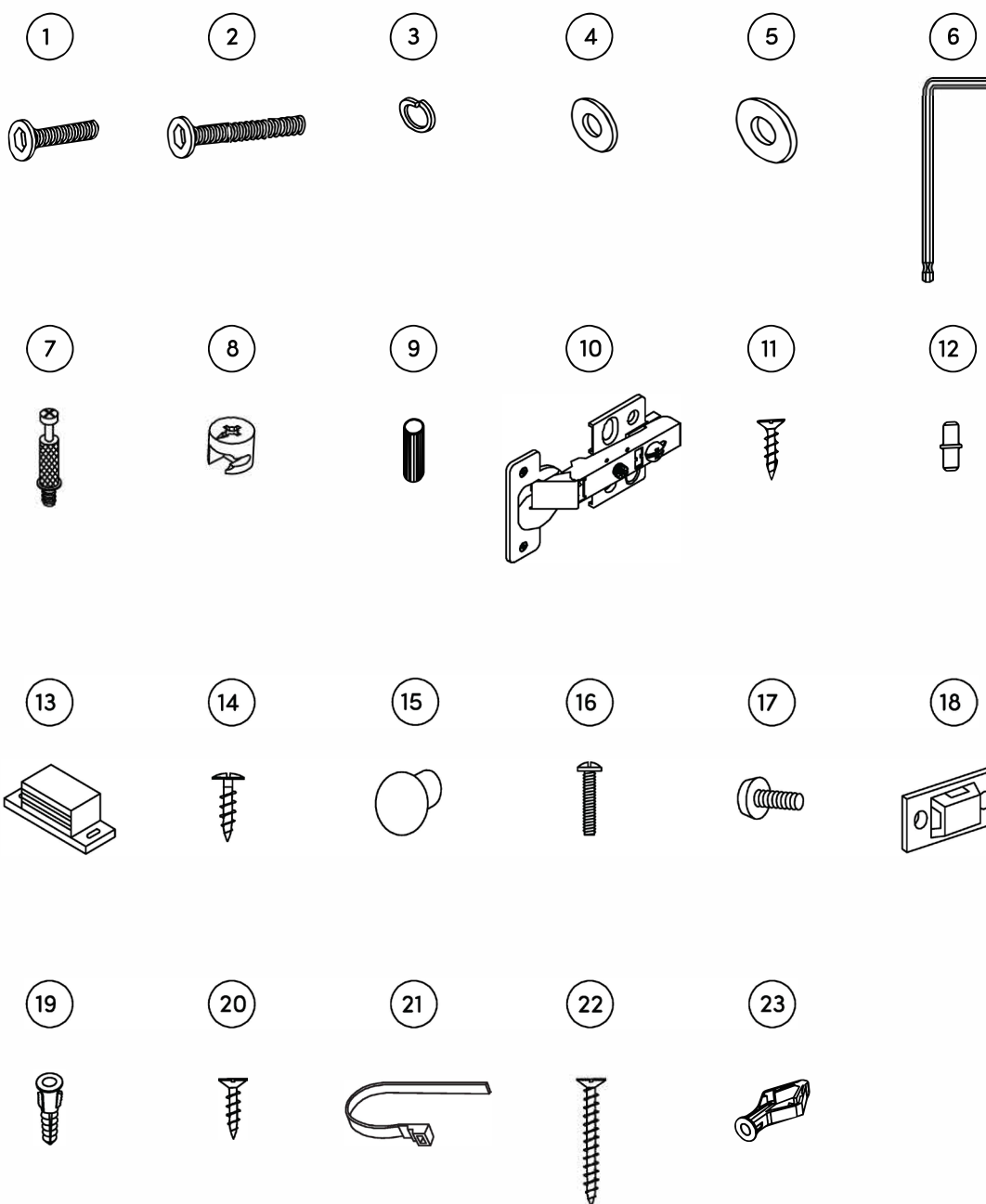
IMPORTANT

1. Do not tighten bolts / screws completely until all bolts / screws are lined up and inserted into holes.
2. Do not over tighten screws and bolts to avoid stripping.

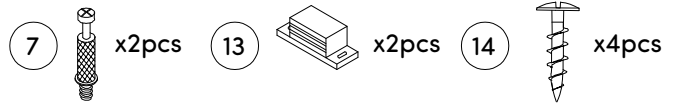
What's included

	Description	Qty
1	Ø1/4" x 28mm Hex Button Head Bolt	8
2	Ø1/4" x 50mm Hex Button Head Bolt	4
3	Ø1/4" x 10mm Spring Washer	12
4	Ø1/4" x 13mm Flat Washer	8
5	Ø1/4" x 19mm Flat Washer	4
6	Allen Key	1
7	Cam Bolt	2
8	Cam Lock	2
9	Ø8x20mm Wooden Dowel	8
10	Hinge	4
11	M3.5x15mm Screw	24
12	Shelf pins	4
13	Magnetic Catches	2
14	M3x15mm Screw	4
15	Handle	2
16	Ø5/32" x 18mm Bolt	2
17	Leveler (Extra)	2
18	Plastic Bracket (Anti-Tip Kit)	2
19	Non - Drywall Anchor (for Anti-Tip Kit)	2
20	M3.5x15mm Screw (for non-Drywall Anchor Anti-Tip)	2
21	Plastic Tether (for Anti-Tip)	1
22	M4x50mm Screw (for Drywall Anchor Anti-Tip)	2
23	Drywall Anchor (Anti-Tip Kit)	2

The goods

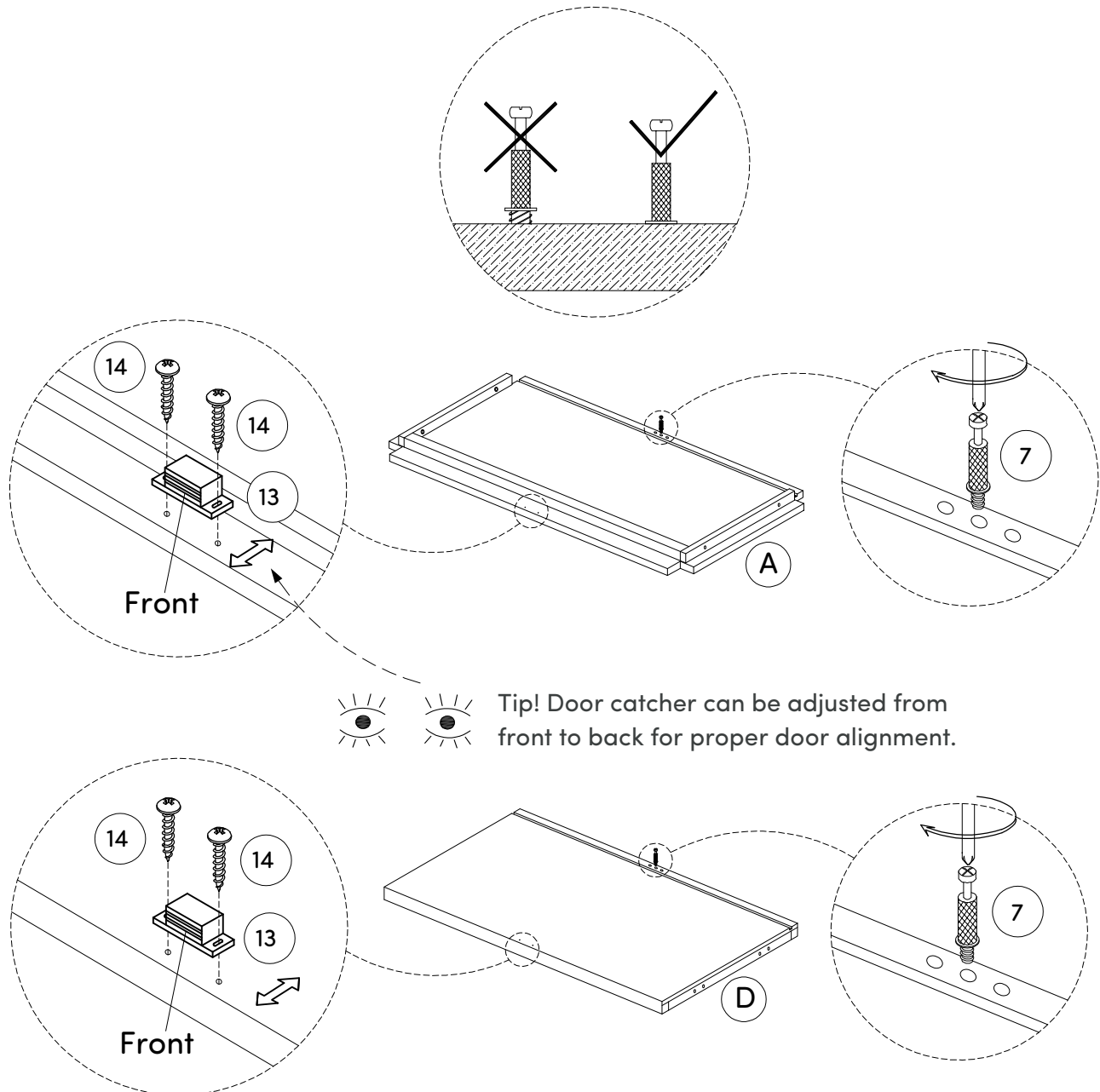


Step 1



Let's get started! Insert the Cam Bolts (7) into the designated holes in the Top Panel (A) and Bottom Panel (D) using a Phillips head screwdriver.

Next, attach the Magnetic Catches (13) to Top Panel (A) and Bottom Panel (D) using Screw (14).



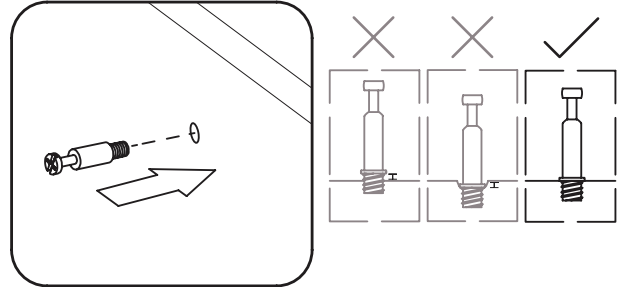
How to use cam locks

Did you know?

Cam locks are used to join two panels together, usually the edge of one to the flat side of another.

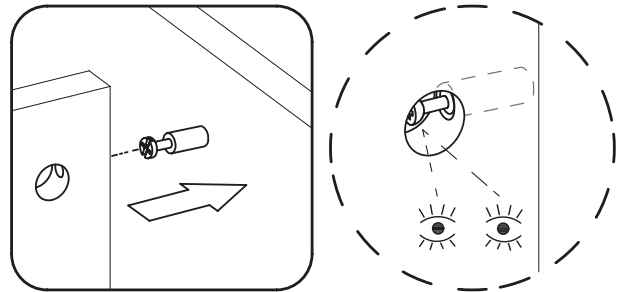
First, your cam bolt (or cam pin) will need to be properly inserted into the flat side of the board.

Important Note: Only tighten the cam bolt until it is secure. Do not over-tighten.



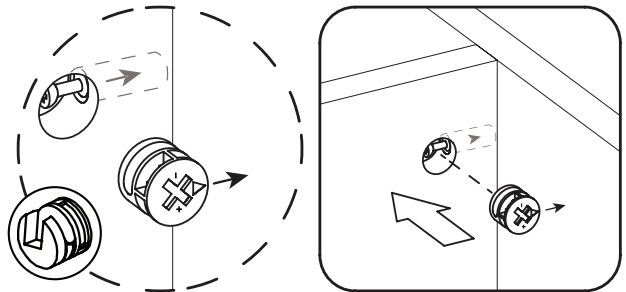
Next, you will fit the proper hole on the edge of the associated joining panel over the cam bolt.

Important Note: When installed properly, the head of the cam bolt will be visible through the larger hole on the side of the joining panel.



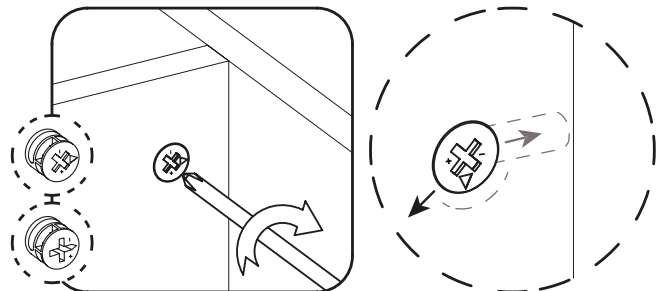
Next, you will notice the cam lock has a “C” shaped back. Commonly, an arrow on the front of the cam lock points in the same direction as the open section on back.

Using these as your cue, insert the cam lock into the large hole so the opening of the “C” fits over the head of the cam bolt.



Using a screwdriver, you will turn the cam lock until it stops, usually between 130° or 180°. You will feel the panels pulling closer until they are secured.

Important Note: Only turn the cam lock until the panels are fully engaged & feel secure. Turning too far may lead to hardware failure.



Still having issues?

If a cam lock seems to be spinning in place or is not “catching” or pulling the panels together as expected, first remove the cam lock & try again while making sure that everything is properly positioned & oriented.

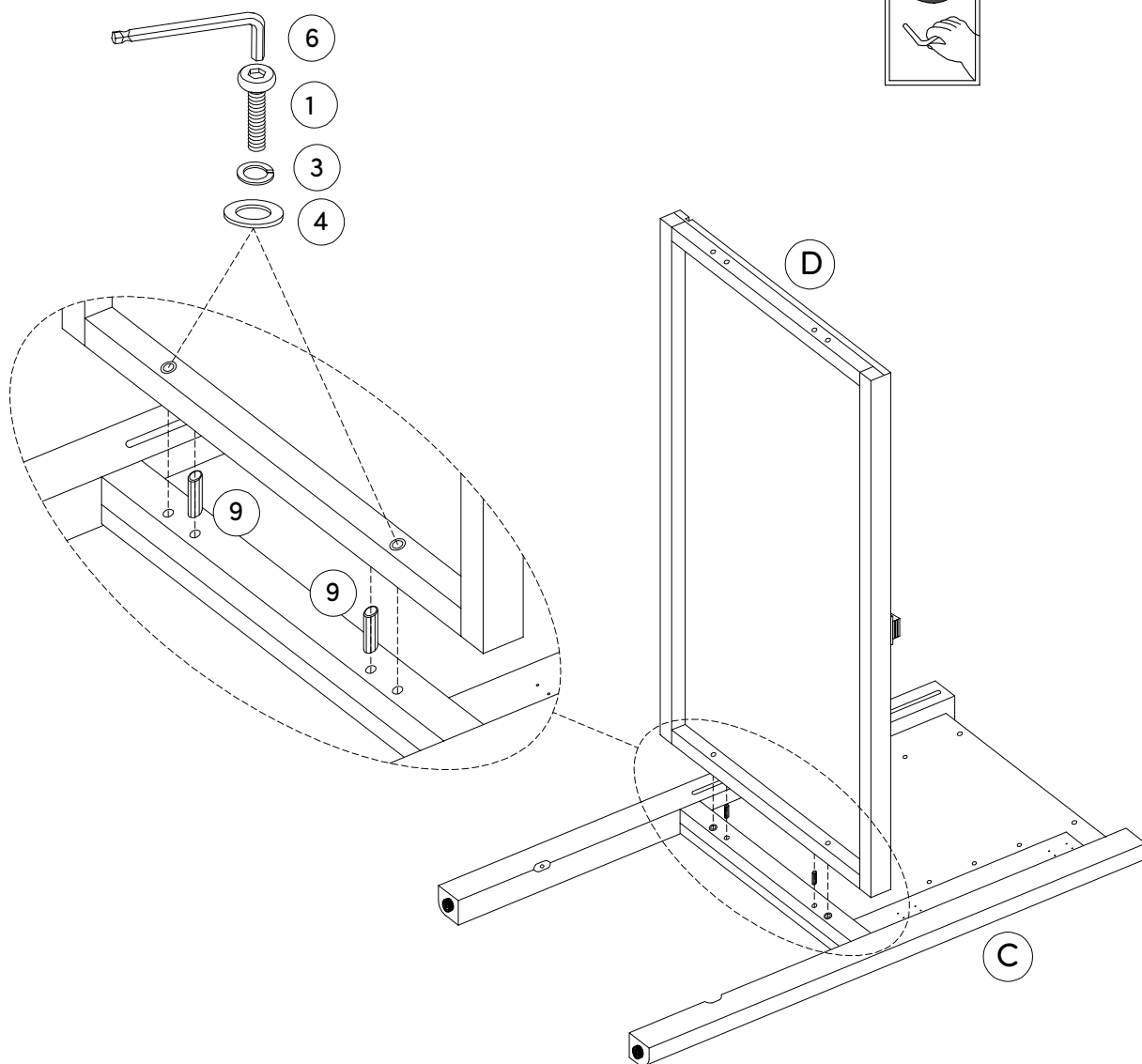
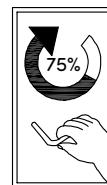
If you are still having issues getting things work ing as expected, first remove the cam lock then unscrew the cam bolt slightly (less than 1 complete turn) to see if that helps with the alignment of the cam lock & bolt.

Step 2



Now attach the Bottom Panel (D) to the Right Side Panel (C). Secure in place using the Wooden Dowels (9), the Hex Button Head Bolts (1), the Spring Washers (3) and Flat Washers (4).

Tighten to 75%



Step 3

8



x1pc

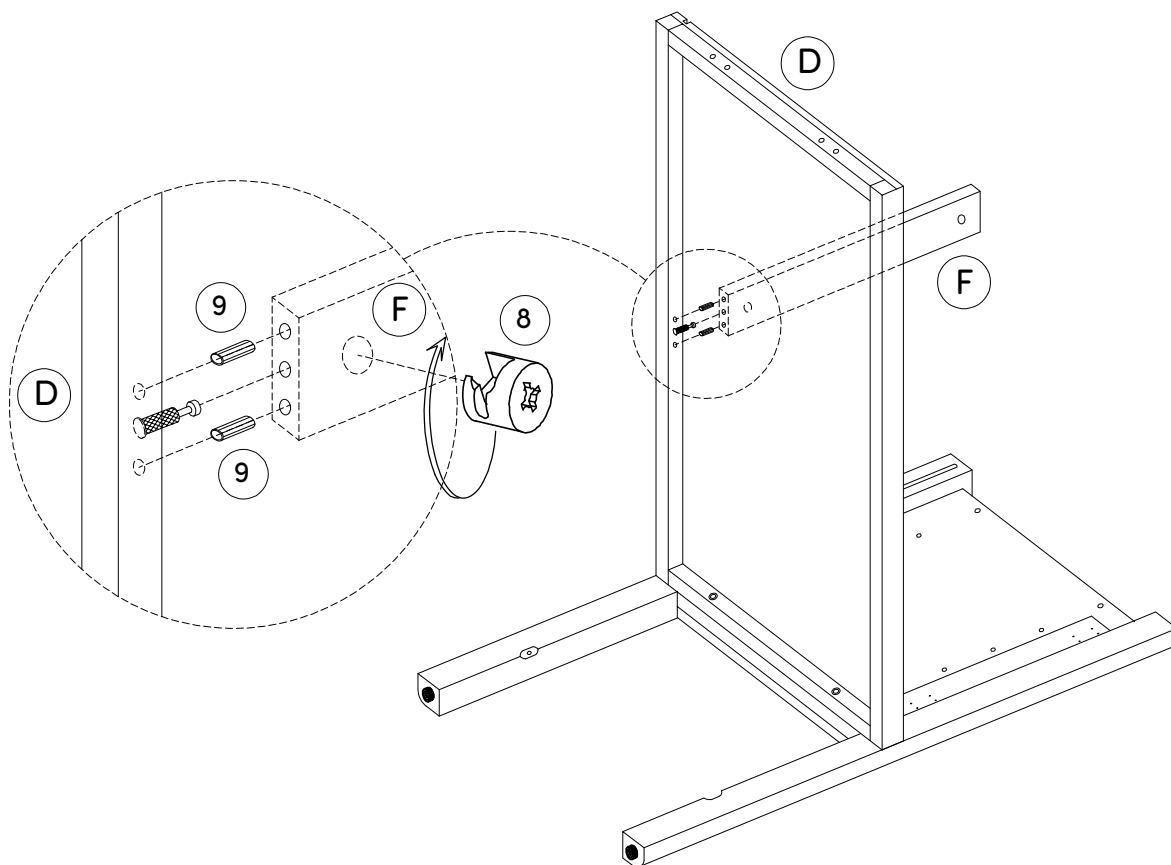
9







x2pcs

Insert two Wood Dowels (9) into the Bottom Panel (D). Now assemble the Back Brace (F) by aligning it with the Wooden Dowels (9) and Cam Bolts and push together. Make sure to line things up as shown below.

Finish this step by using Cam Locks (8) to secure the Back Brace (F).



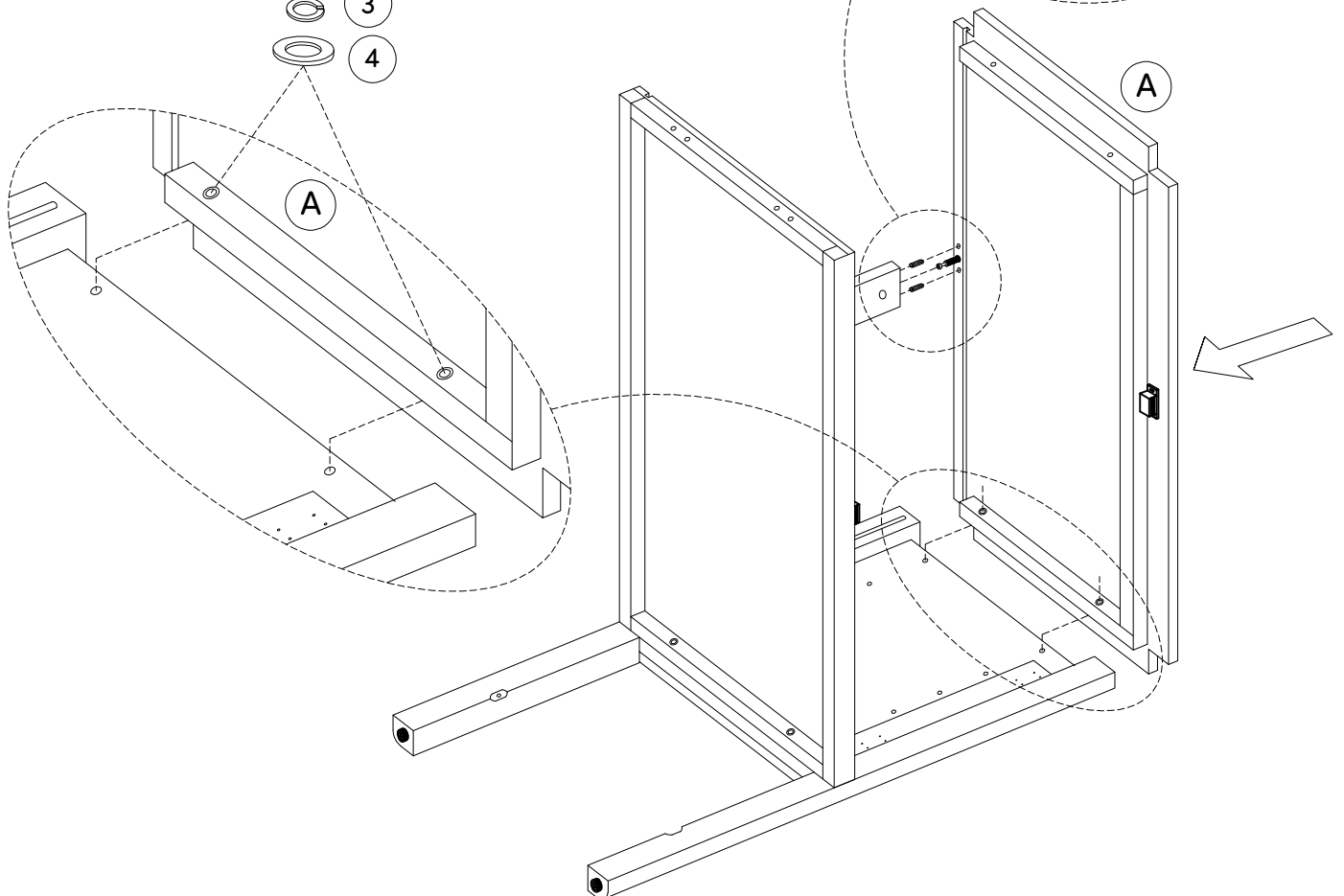
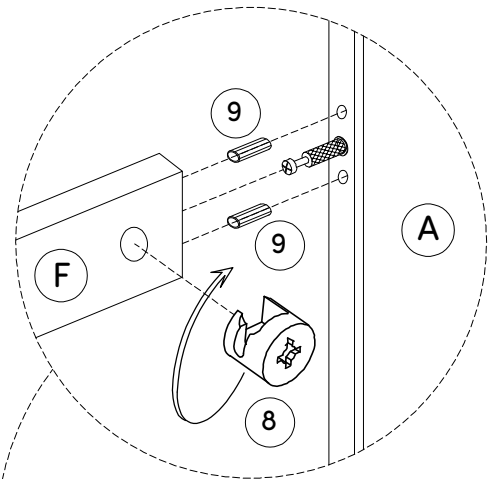
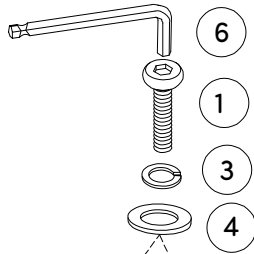
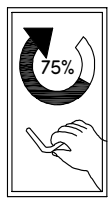
Step 4

1  x 2pcs
 3  x 2pcs
 4  x 2pcs
 8  x1pc
 9  x 2pcs

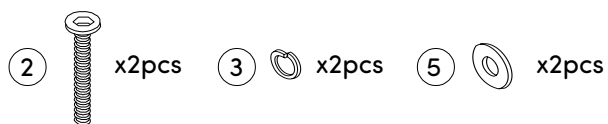
Next, attach the Top Panel (A) to the pieces you assembled in Step 3. Do this by inserting Wooden Dowels (9) into the coordinating holes, then push together.

Secure in place using the Cam Lock (8) and the Hex Button Head Bolts (1). Be sure to use the Flat Washers (4) and Spring Washers (3) on your bolt before securing. Tighten using the provided Allen Key (6).

Tighten to 75%

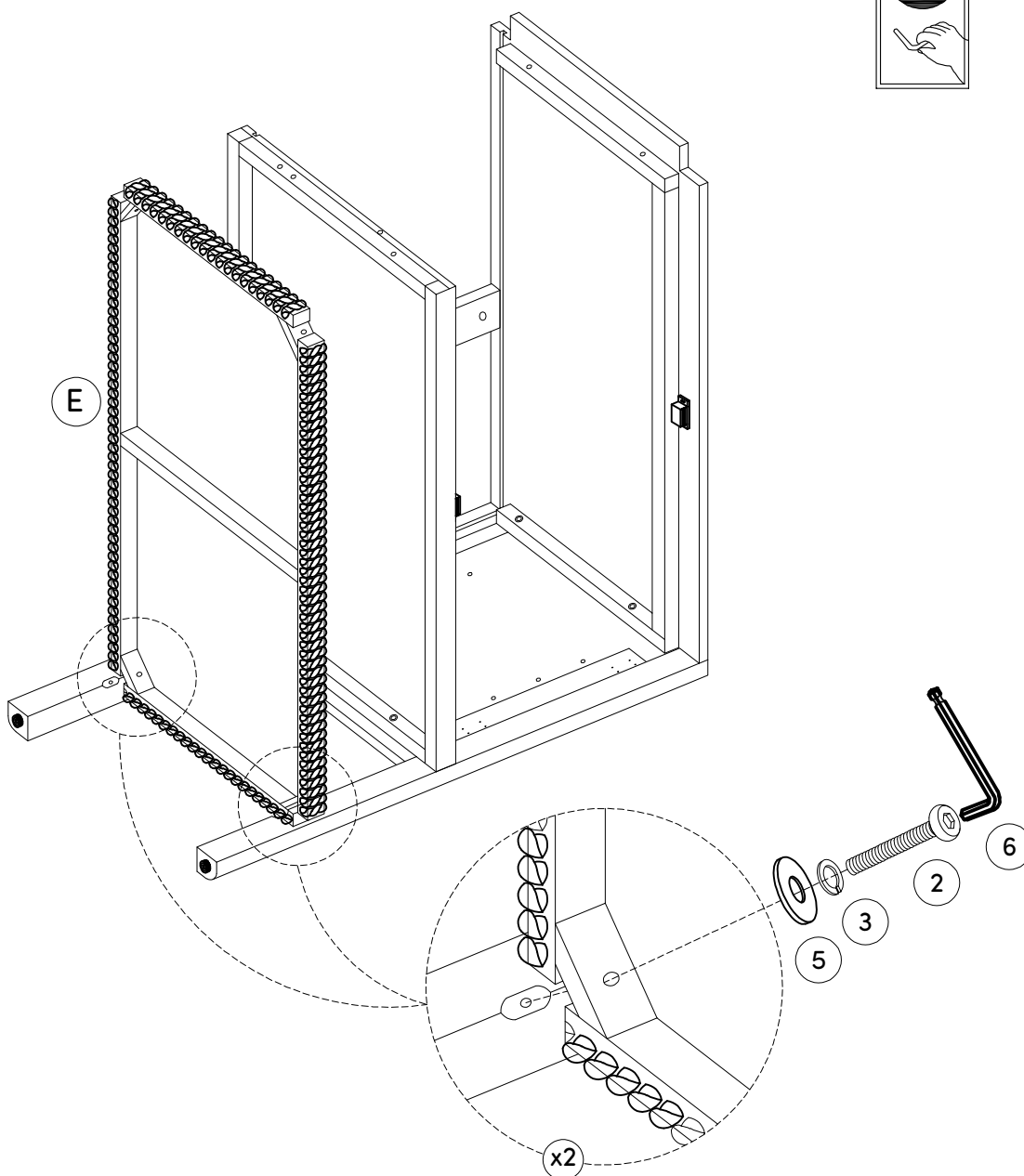
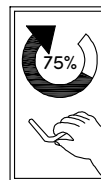


Step 5



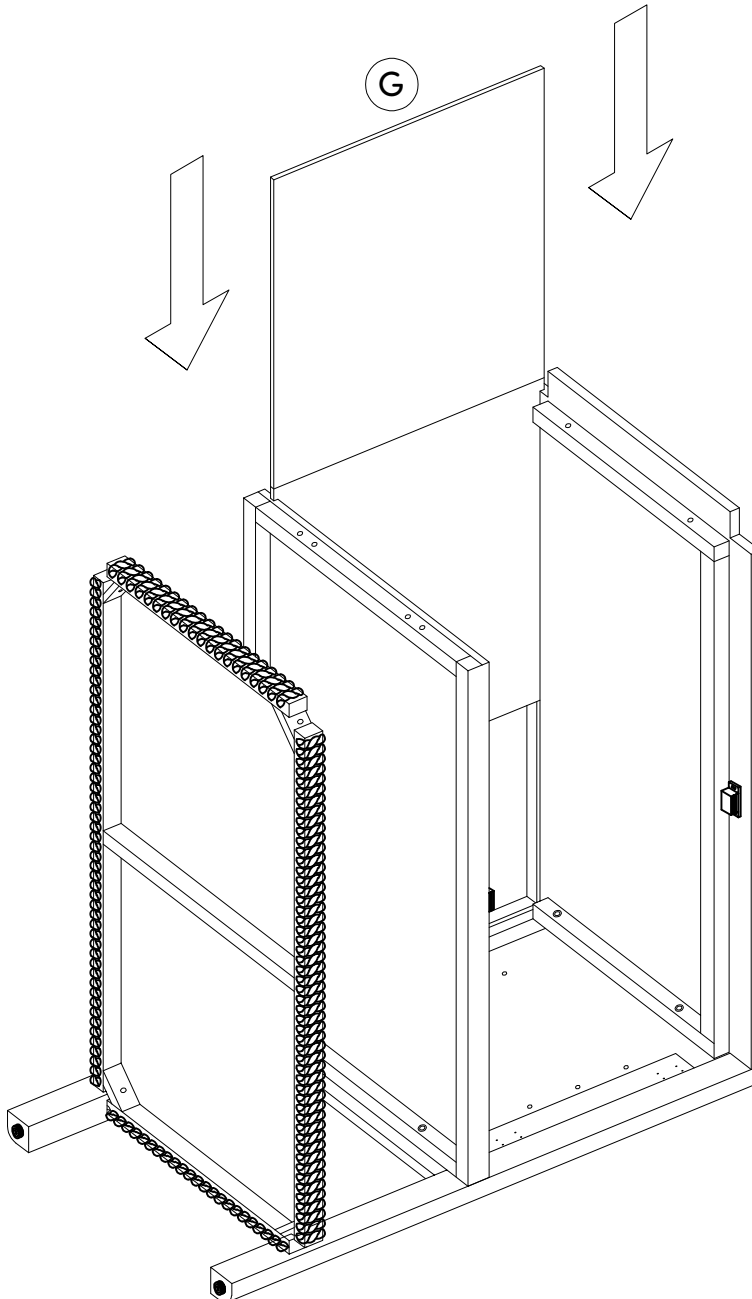
Attach the pieces you assembled in Step 4 to the Bottom shelf (E) and secure into place using the Hex Button Head Bolts (2), Spring Washers (3) and Flat Washers (5).

Tighten to 75%



Step 6

Unfold the Back Panel (G) and slide it into place on the cabinet. It should fit smoothly into the grooves.

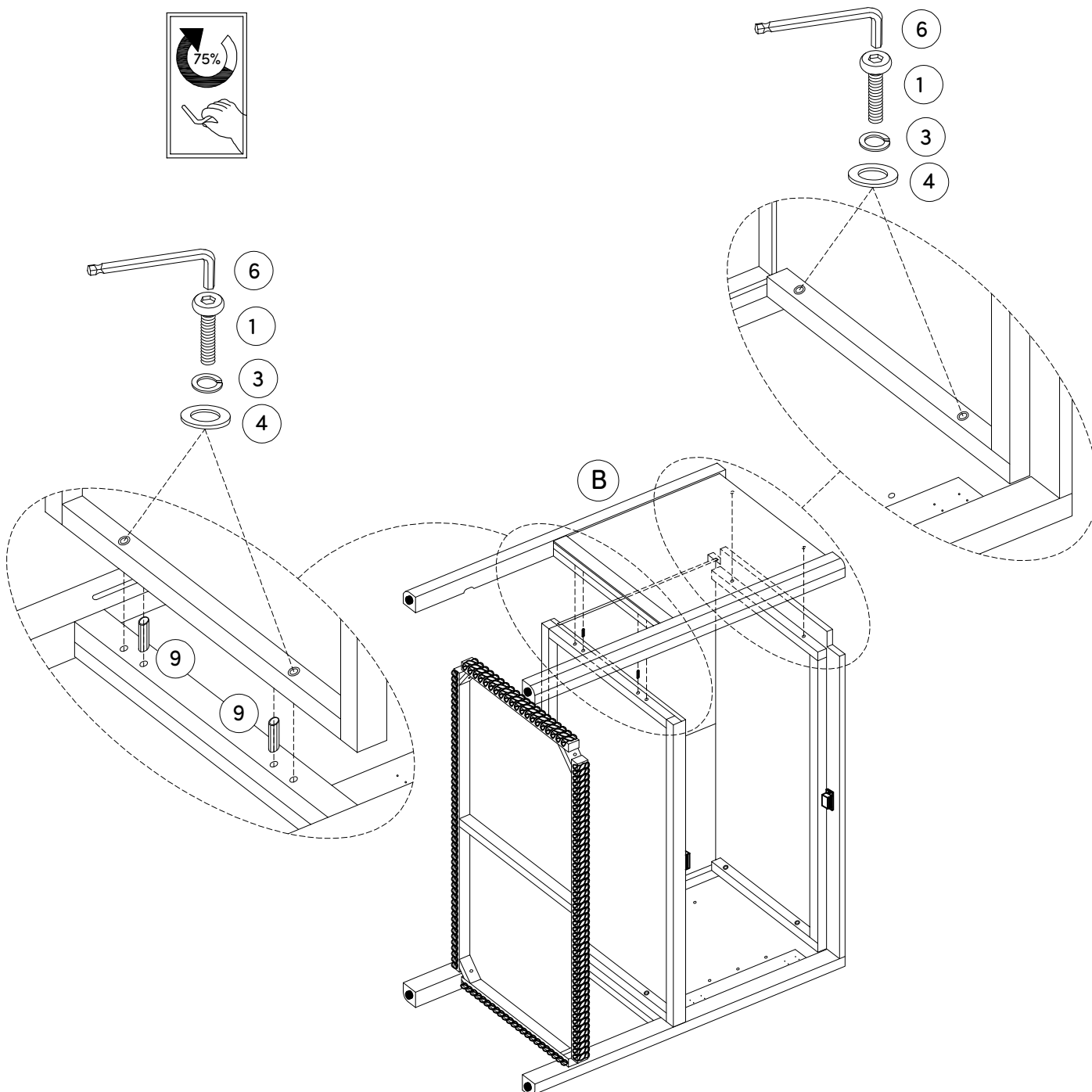
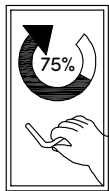


Step 7

① x 4pcs ③ x 4pcs ④ x 4pcs ⑨ x 2pcs

Attach the pieces you assembled in Step 6 to the Left Side Panel (B) and secure in place using the Wooden Dowels (9), the Hex Button Head Bolts (1), the Spring Washers (3) and Flat Washers (4).

Tighten to 75%

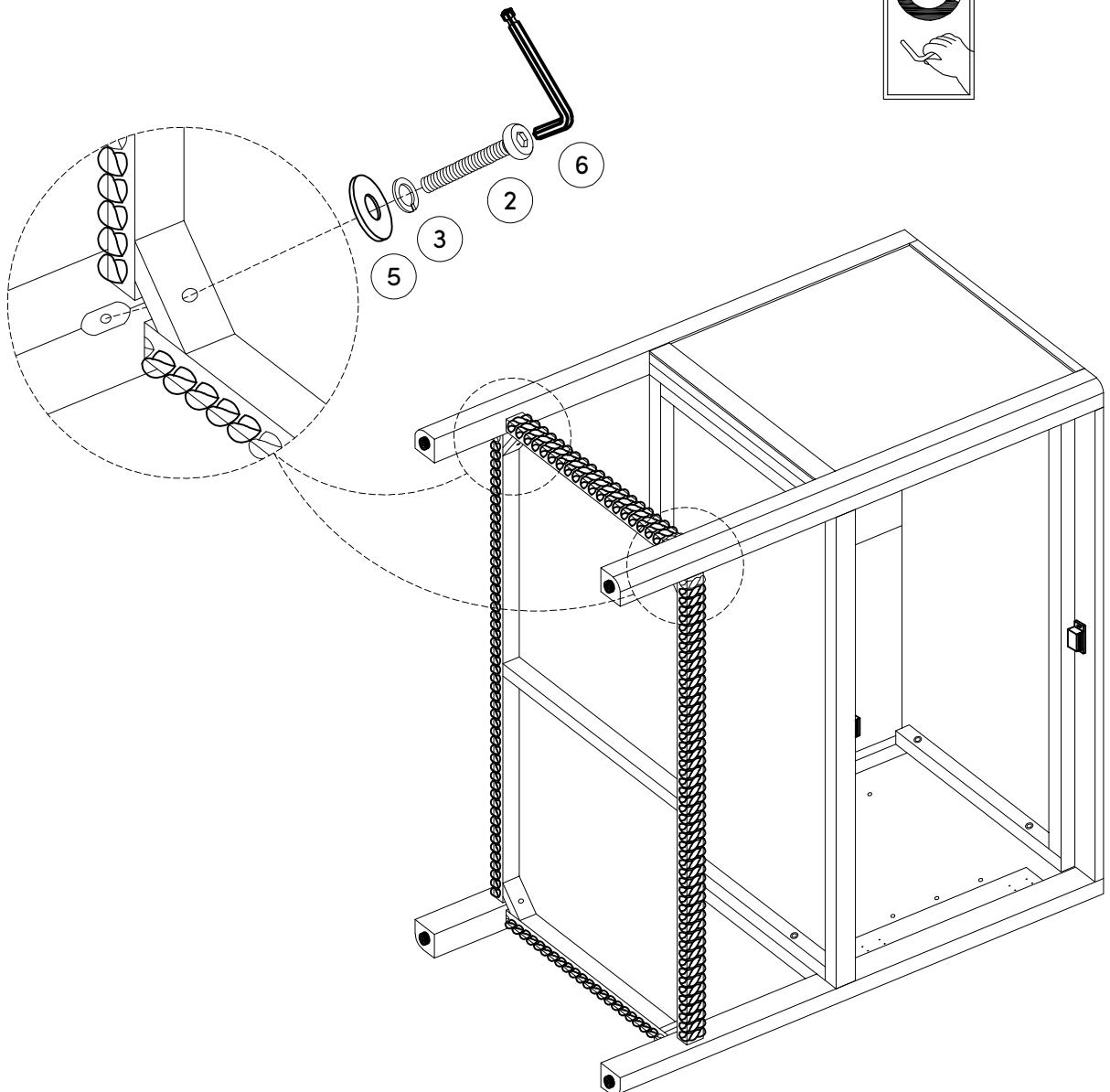
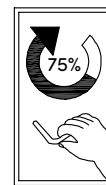


Step 8


Secure the Right Side Panel (B) to the Bottom Shelf using the Hex Button Head Bolts (2). Be sure to use the Flat Washers (5) and Spring Washers (3) on your bolt before securing. Tighten using the provided Allen Key (6)



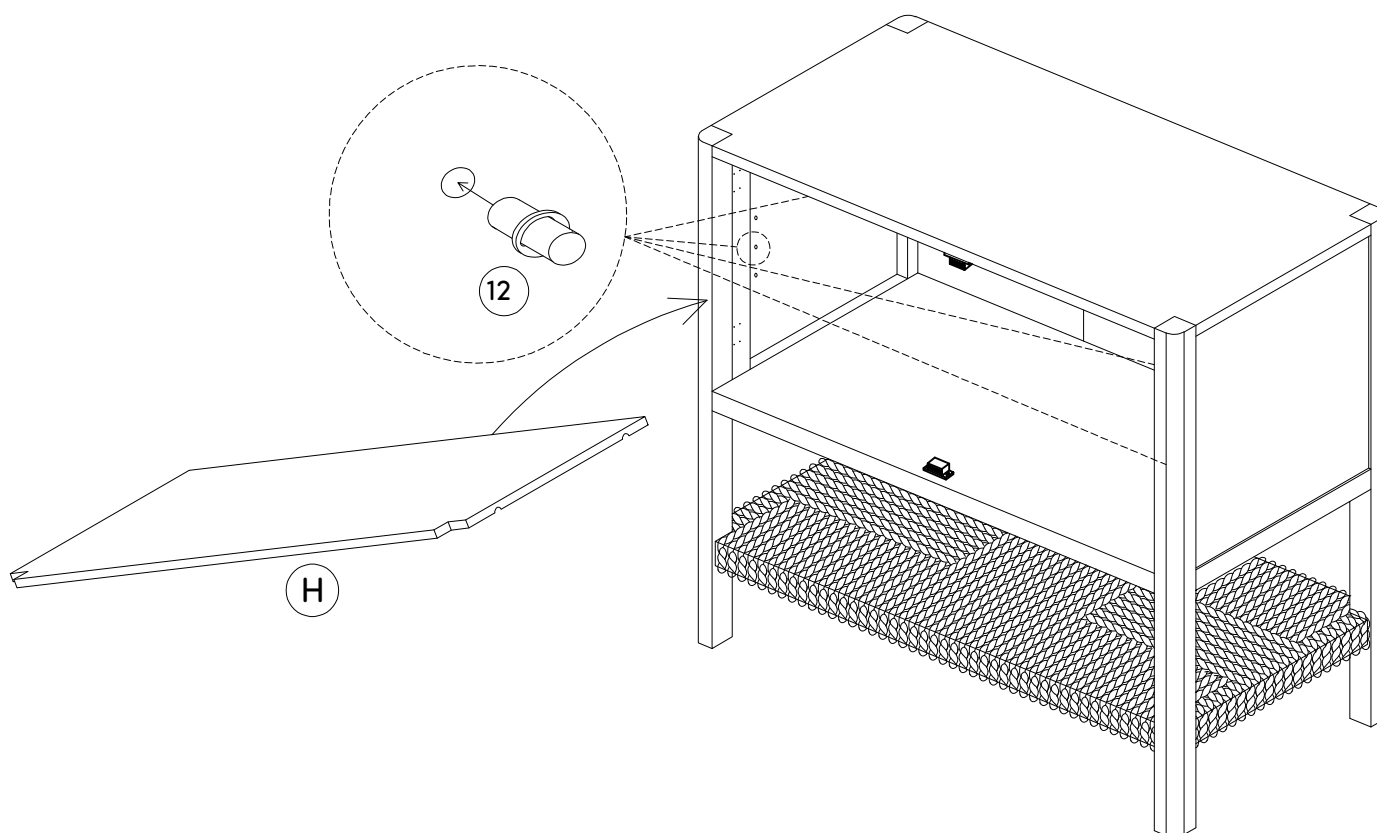
Tighten to 75%



Step 9

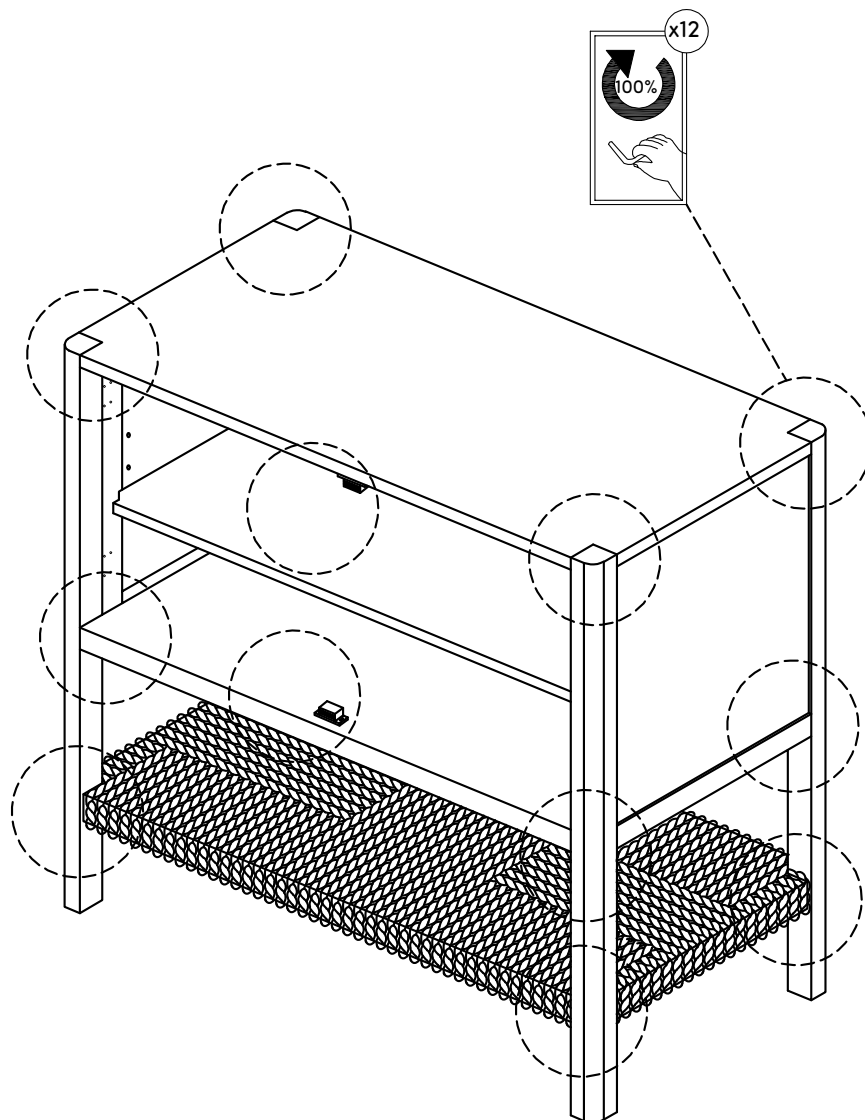
12  x4pcs

Time to get out those muscles! Flip the unit upright (you might need a friend for this) and then twist in the Shelf Pins (12) at your desired height and slide the Shelf (H) in the unit.



Step 10

Now, go back and tighten all your screws to 100%—time to make it rock-solid!

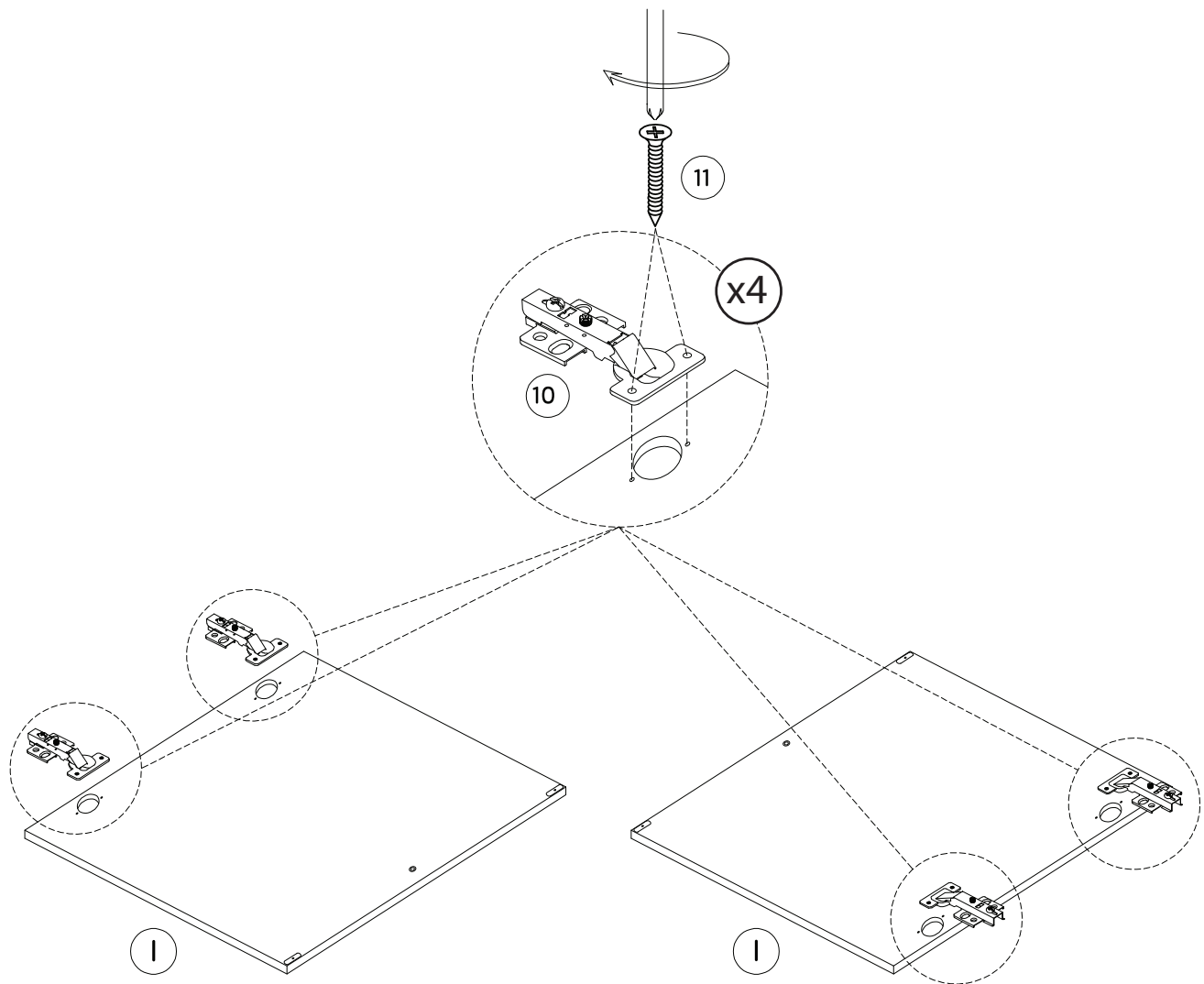


Step 11

10  x4pcs 11  x8pcs

Let's get started on the doors!

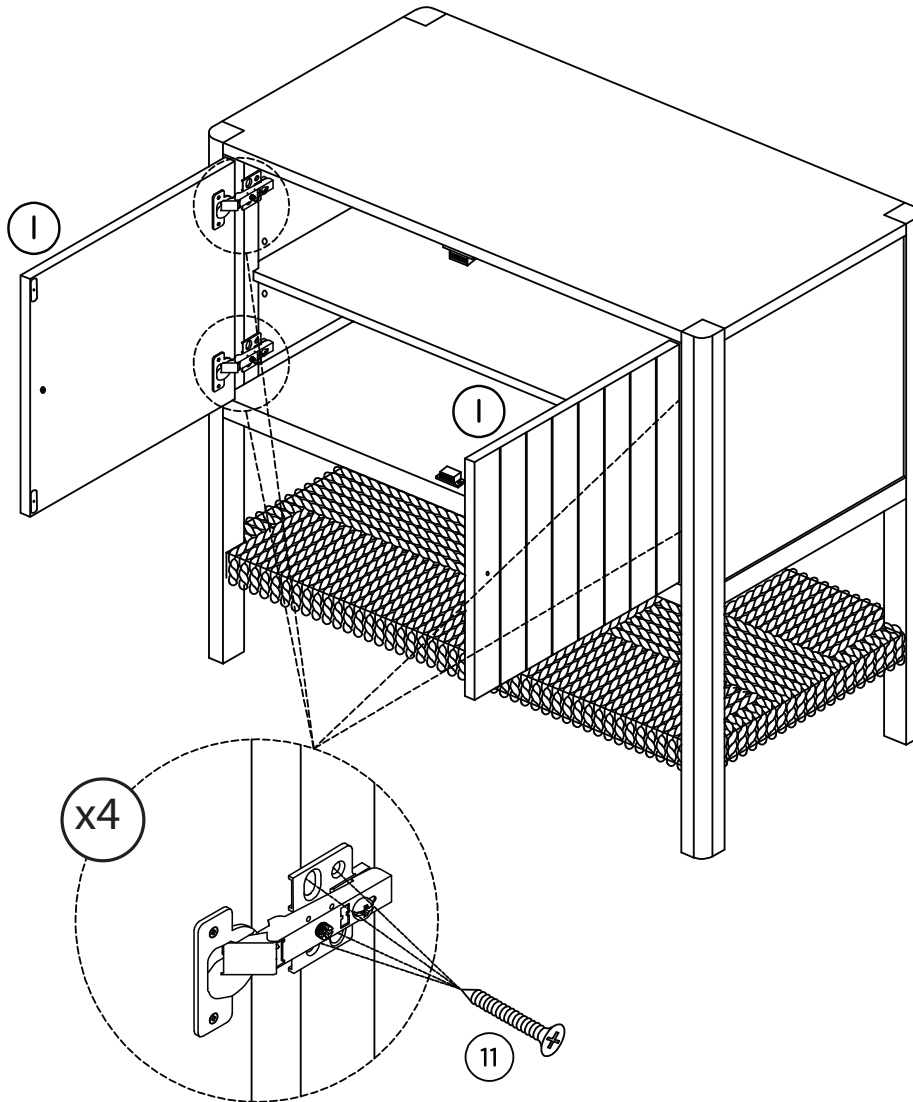
Attach the Hinges (10) to the doors using two of the Screws (11) per hinge.



Step 12

11  x16pcs

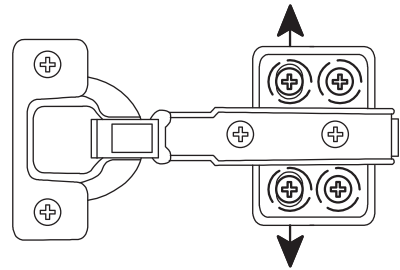
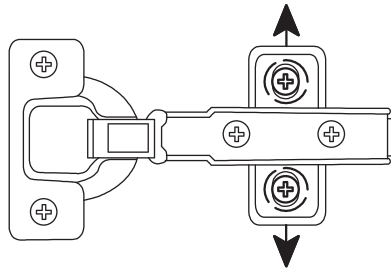
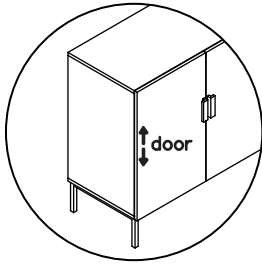
Attach the doors (I) by securing the Hinges (10) to the cabinet using the Screws (11). You'll need four screws per hinge.



Is your cabinet door looking crooked or unevenly spaced?

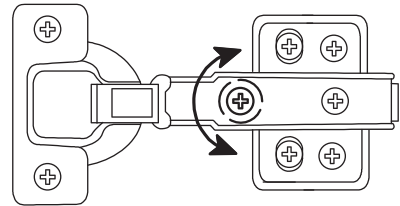
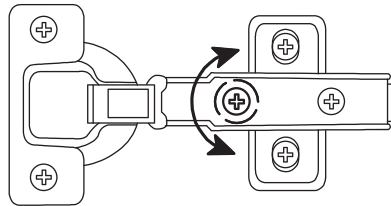
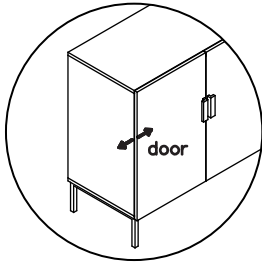
Then you've come to the right place. Follow the illustrations below to get your cabinet door aligned and ready for action.

If your door is too low or too high...



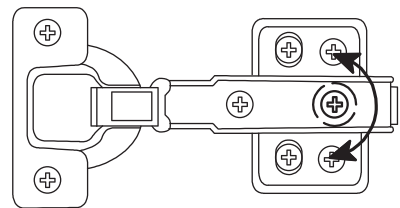
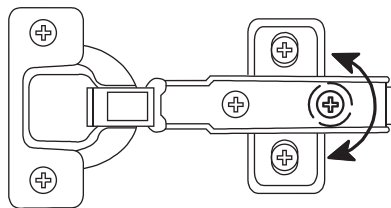
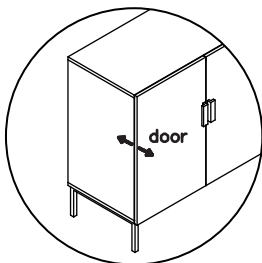
Loosen the height screws, then move the door up or down to make it level.

If the space between your doors is off...



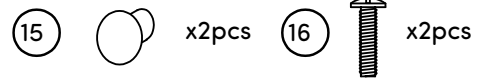
Loosen the side-to-side screws, then screw counter-clockwise to make the gap wider or clockwise to close any gaps.

If you need to adjust the depth of the doors...



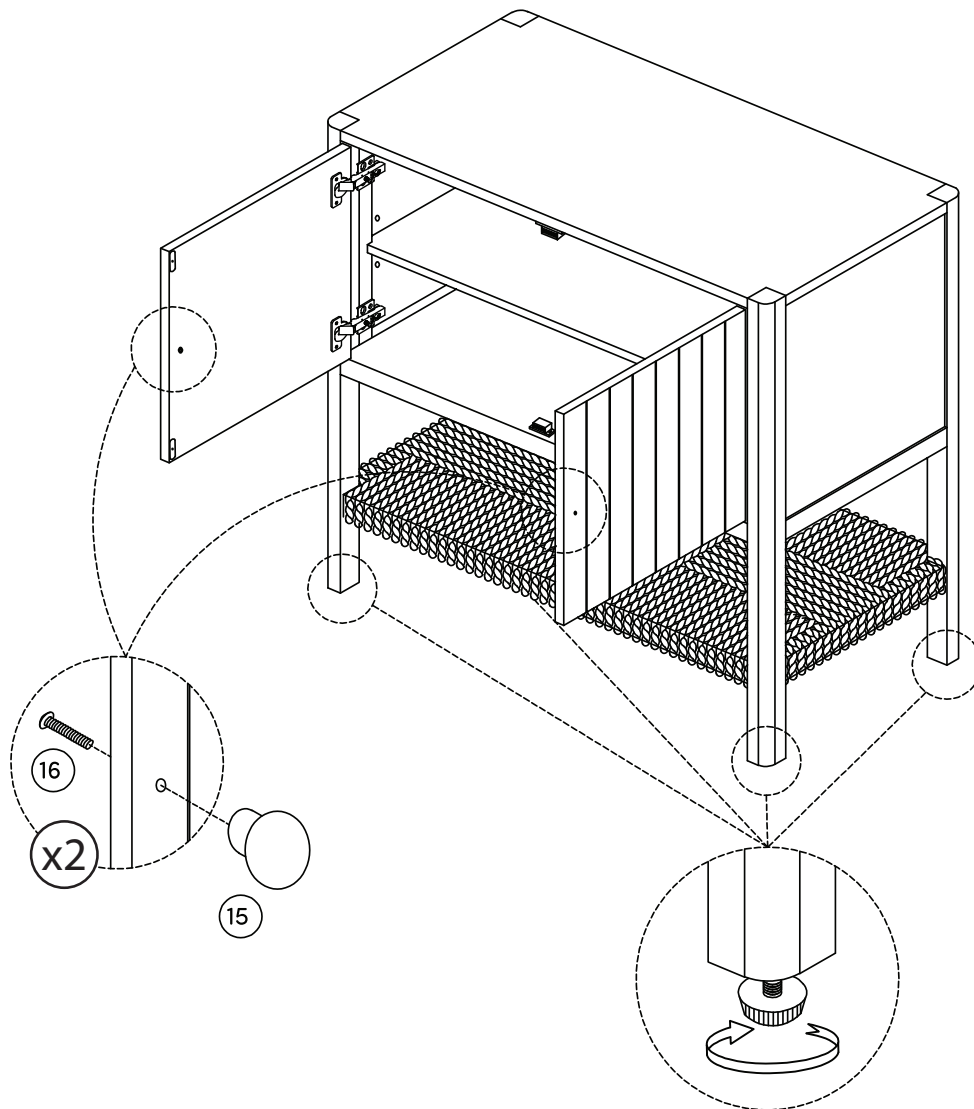
Adjust the in-and-out screws until the door is aligned with the side of the cabinet.

Step 13



Next, attach the Handles (15) to the doors using the Bolt (16).

Now go ahead and check that your cabinet is level and not wobbly. If it's looking a little unlevel, adjust the levelers on the feet until it's nice and level.



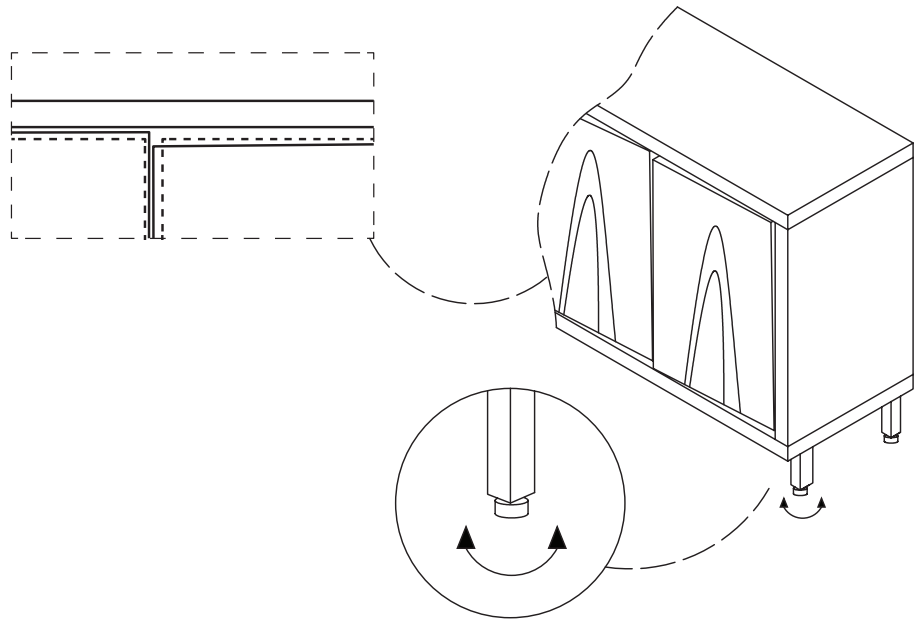
Wobbly or unlevel?

Adjust feet until stable!

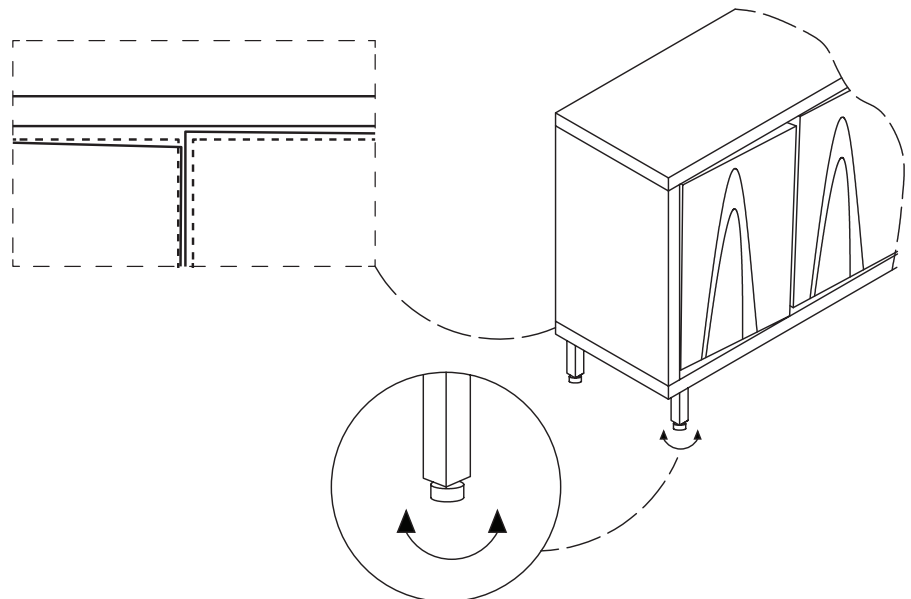
Is your cabinet door looking crooked or unevenly spaced? (Cont.)

If you're still having trouble lining everything up, your next step should be to adjust the leveling glides to square up the cabinet and doors and make sure things are level. Follow the instructions below:

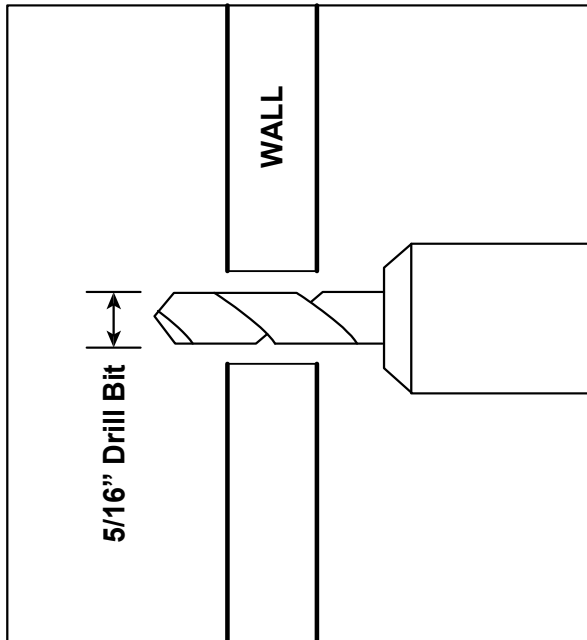
If the right door appears to be hanging low, you can adjust the adjustable leveler on the front right until the door is better aligned.



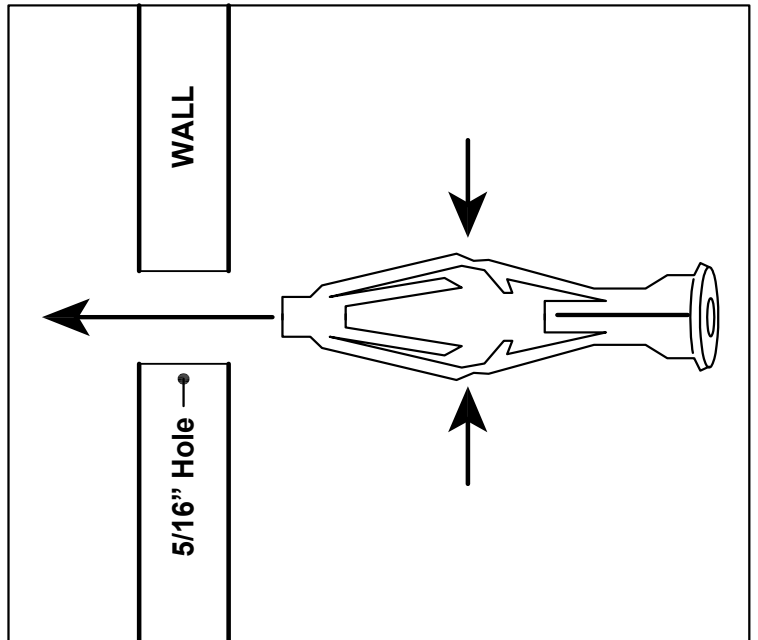
If the left door appears to be hanging low, you can adjust the adjustable leveler on the front left until the door is better aligned.



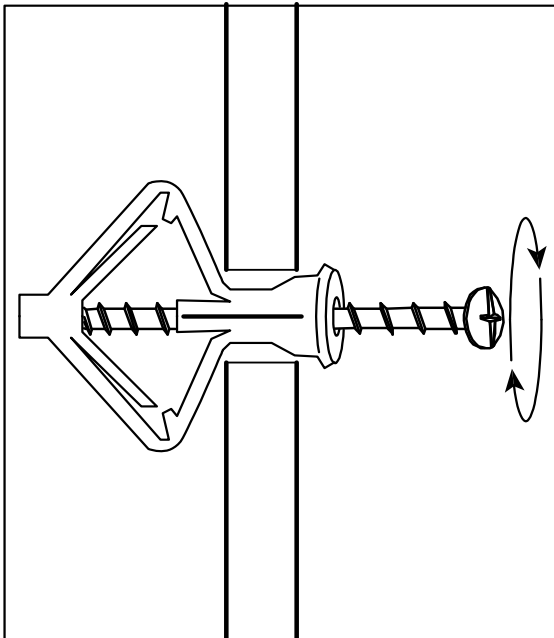
How to Use Drywall Anchors



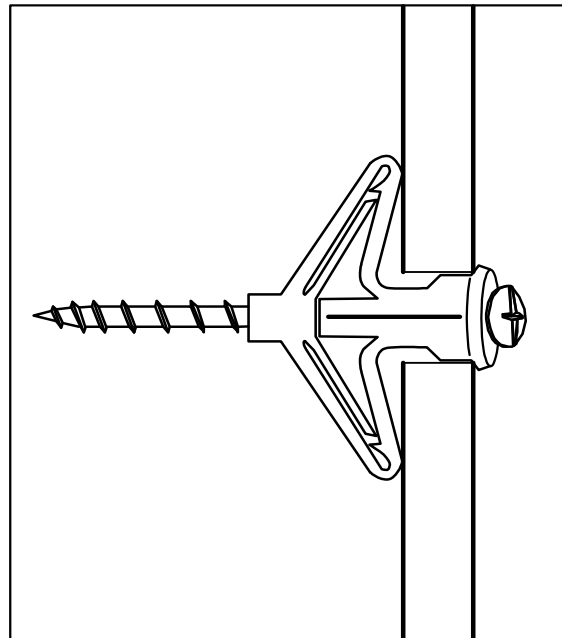
1. Drill hole with 5/16" bit.



2. Pinch and insert.



3. Begin tightening.



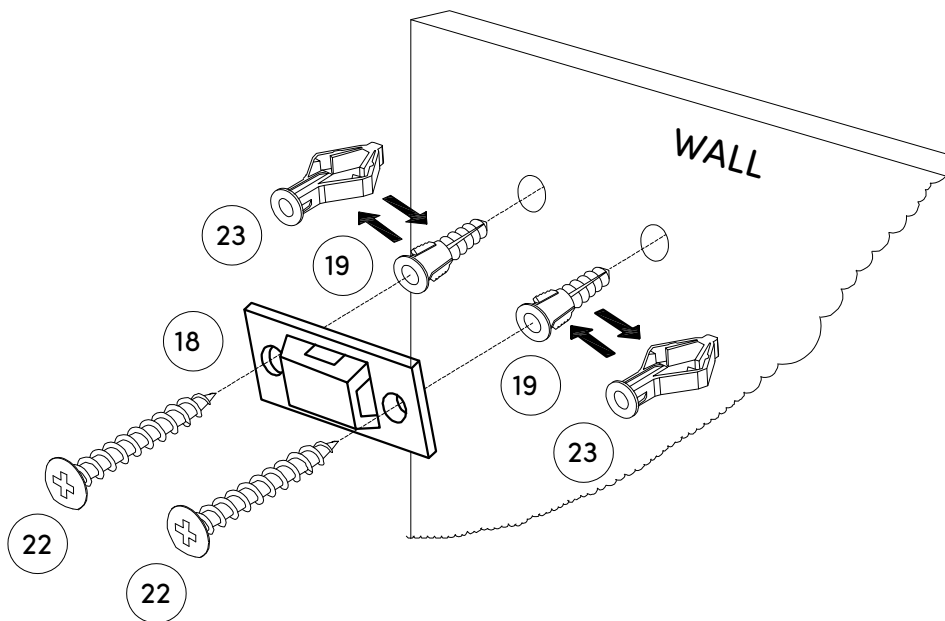
4. Anchor is secure when screw is tightened to 100%.

Step 14



Safety first! Use the wall anchor to secure your storage unit to the wall. You'll need a drill and proper sized drill bit for this step.

First drill a hole for the proper wall anchor into the wall. Insert the Wall Anchor (19) or (23) in the hole, then secure the Plastic Bracket (18) to the wall using the Screw (22).



IMPORTANT NOTE:

Non-Drywall Anchor (19) requires a 1/4" Drill Bit

Drywall Anchor (23) requires a 5/16" Drill Bit

IMPORTANT NOTE:

Young children (and/or pets) can be seriously injured by tipping furniture units.

You must install the provided anti-tip kit hardware solution, as instructed, to prevent the furniture unit(s) from tipping over - which could possibly lead to injuries or damage.

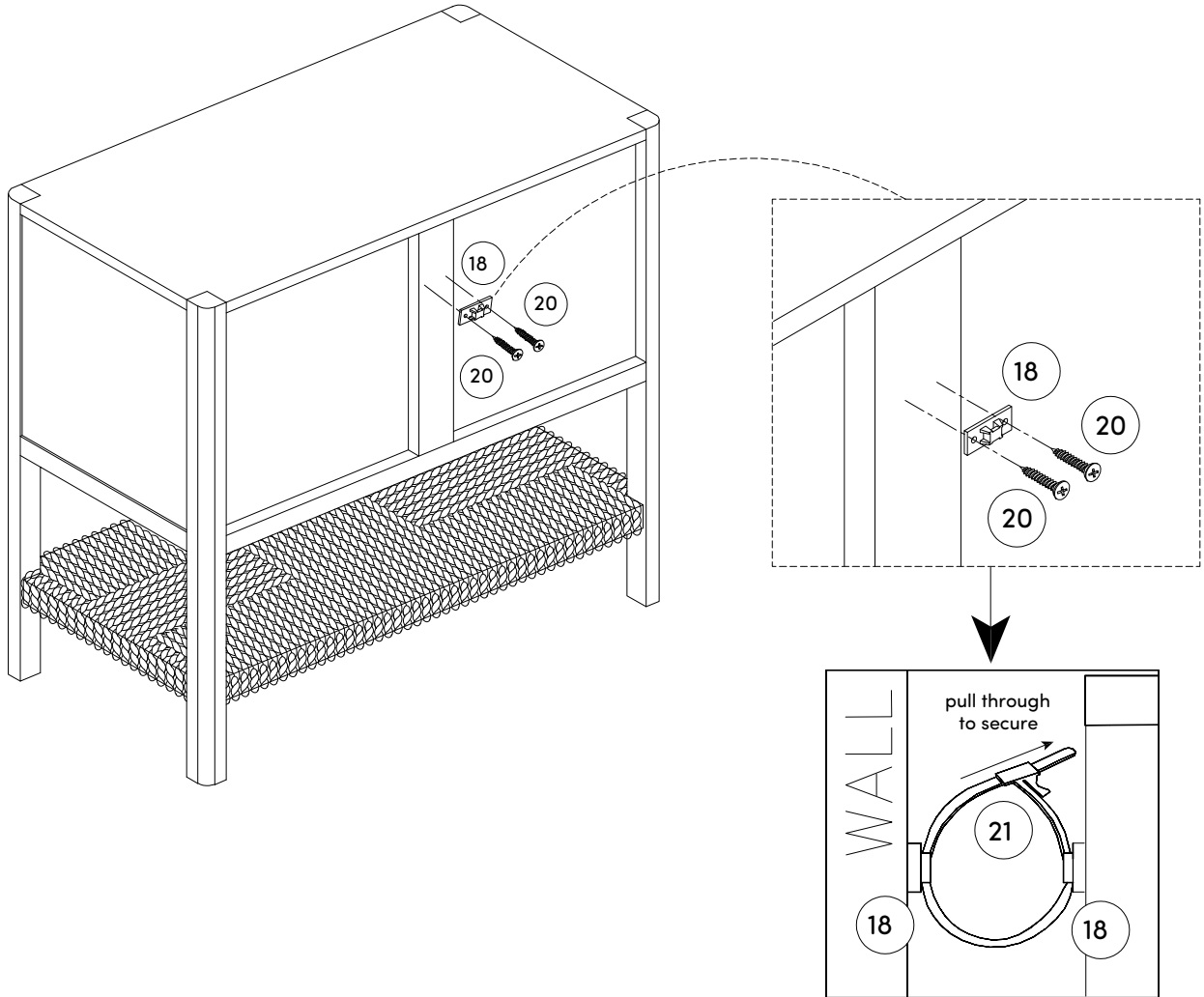
The provided anti-tip kit hardware solution is intended only as an additional safety measure & deterrent; it is not a substitute for proper adult supervision.

The provided anti-tip kit hardware solution is not an earthquake restraint. If you wish to add the extra security of earthquake restraints, they must be purchased & installed separately.

Step 15

18  x1pc 20  x2pcs 21  x1pc

And now for the final step! Attach the Plastic Bracket (18) to the cabinet using the Screws (20). Finally, thread the Plastic Tether (21) through the Plastic Bracket (18) to secure the cabinet to the wall.



No heartburn, when we handle the return

Give us a call **1-866-619-1004** or shoot us a message
at **help@nathanjames.com** we will issue you a free
replacement with **zero hassle**.

Our way



Give us a call



Replacement



You

Their way



Re-package item



Schedule pick up



Track package



Replacement



You

We really don't want you to go through the hassle of re-packaging your item
and sending it back, because let's be honest...nobody has time for that.

Safety first, fun later

We want your Meads Storage Cabinet to last as long as possible, so we recommend that you tighten the screws 2 weeks after assembly and for added safety check the tightness of all screws every 2 months.

For proper care and treatment of wood and metal please check our website at NathanJames.com/products

Safe use of this product starts with you.

Use this storage cabinet responsibly with the primary concern for your safety. Follow assembly instructions carefully and inspect product upon receipt and each use.

Nathan James and its parent companies cannot be held legally responsible for any injuries or death resulted from failure to follow instructions or improper use of this product.

Do not modify the structure of this product in any way.

Our products have been tested to meet specific safety measures as they were originally intended to be sold. Any modifications will present the risk of creating significant safety issues which NJ will not be responsible for.

Proper use

DO NOT	use for commercial purposes
DO NOT	climb on storage cabinet
DO NOT	exceed weight limit
DO NOT	leave spilled liquid on storage cabinet
DO NOT	use if storage cabinet is damaged or broken
DO NOT	make temporary repairs
DO NOT	use outdoors

We are only in business if you're happy

For starters, thanks for being you.

☎ Toll-free at 1-866-619-1004

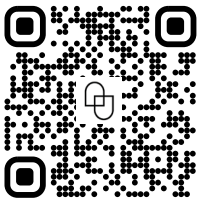
✉ Help@nathanjames.com

🌐 NathanJames.com/help

We do our best to ensure your furniture arrives without any problems, but occasionally mistakes happen—as humans we are imperfect beings. In the event that a part is damaged or missing, we will be more than happy to provide you with replacement part(s) for free.

Warranty

This product comes with a lifetime warranty from the date of purchase. Please use your phone to scan the QR code to register your product or visit <https://goo.gl/i9dk3q>



Did we do alright? Please spread the love!

If you are happy with your product, tell your friends and family about us or even better leave us a review online. Spreading the word gives us the opportunity to make more people happy and keep our prices low for your next purchase.

Brooklyn Burdon

Founder, Nathan James