

DREAMS

IDEA

Instruction Manual



DREAMS/IDEA

NO:CH0060



ASSEMBLY INSTRUCTIONS

Tel.5627813327

Please contact us: info@firstopintl.com

<https://www.dreamsidea.com>

ABOUT US

*D*REAMSIDEA IS A ONE-STOP HOME

FURNISHING AND SERVICE COMPANY BASED IN USA.

WE ARE DEDICATED TO BRINGING YOUR DREAM HOME TO LIFE.

OUR SERVICES COVER FROM DESIGN, PRODUCTION,

DIRECT SELL, STORAGE, AND TRANSPORTATION.

IF REALITY IS THE NEAR SHORE

AND IDEALISM THE FAR SHORE,

*D*REAMSIDEA

AS THE FERRY BETWEEN THEM,

EAGER TO ACCOMPANY YOU ON A JOURNEY

TO YOUR IDEAL HOME.

ITEM NO. CH0060

WARRANTY

WE STRIVE TO OFFER HIGH-QUALITY PRODUCT AND WE ALSO TRY OUR BEST TO SATISFY EACH CUSTOMER THAT ORDERS FROM US WITH PRODUCT OR SERVICE AS NEEDED. EACH CUSTOMER RECEIVES A RECORD OF THEIR ORDER, SUCH AS THE ORDER NUMBER OR ITEM RECEIPT. FOR ANY ITEMS THAT ARE OUT OF THE WARRANTY PERIOD, YOU MAY STILL RECEIVE REPLACEMENT PARTS BY PURCHASING THEM FROM OUR COMPANY IF THEY ARE AVAILABLE.

Are you having difficulty
with assembly? Missing parts?

Please contact us : info@firstopintl.com

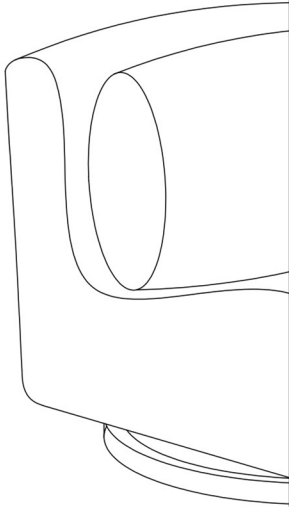
Tel.5627813327

send an email with your order No. to us

For return, please check the return policy with
the retailer or market place you bought from.

Appreciate your purchasing from us.

Pop up your life by our furniture !



MAINTAINANCE AND WARNING

Please read the manual thoroughly before
you start install.

Please always use proper tools for
installment.

Packaging and small parts may have
chocking hazard, please keep them away
from children and pets.

Please clean the product with dry clean
cloth, some of the parts may be able to
wash directly. Check with the product
description!

Please keep the product away
from fire.

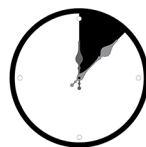
Please keep the product away from
sharp objects.

IF the product is placed under direct
sunlight, the pattern or color might
fade away.

Do not jump on the product.

Check the product periodically to make
sure everything is tightened.

If you have any questions else, please
contact us, we will be glad to help
you out.



Around 10 min

PRDOUCT DESCRIPTION

Sleek Armless Design, the smooth, rounded shape enhances a minimalist yet inviting aesthetic.

A metal base ensures long lasting stability.

Plush, Resilient Cushioning, high density foam and synthetic fibers provide exceptional comfort and support.

Soft Chenille Upholstery, high cotton content offers a luxurious, cozy feel.

360 Degree Swivel Base, effortlessly move and adjust your seating position for ultimate convenience.

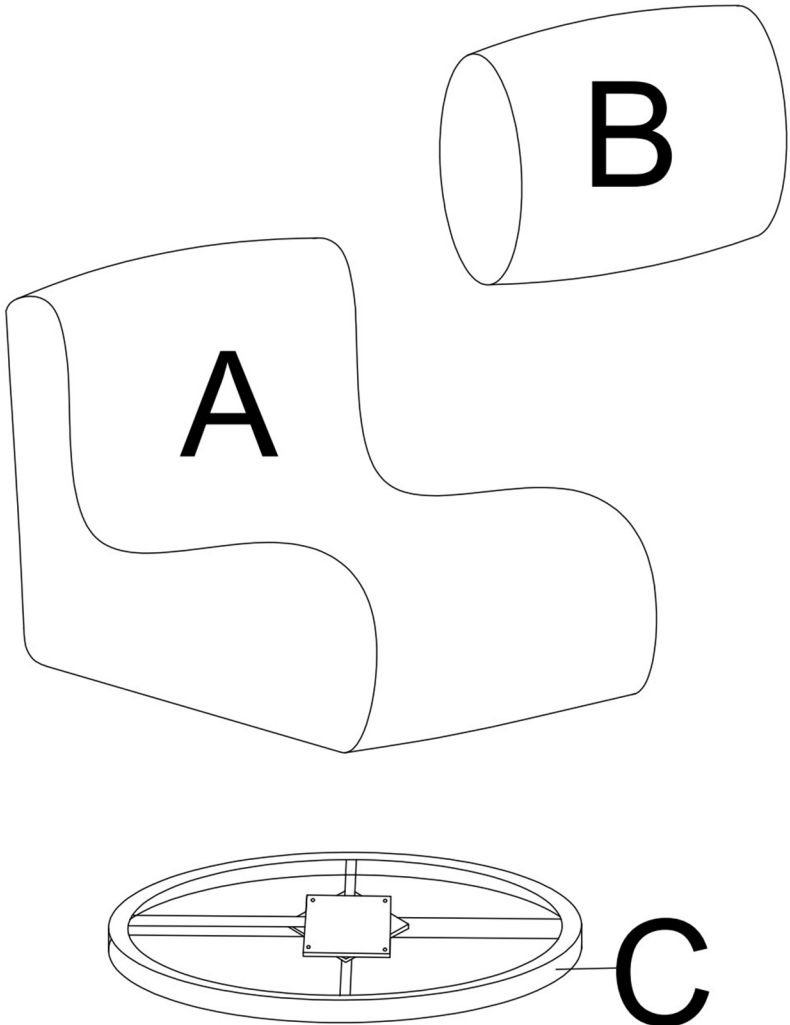
Dream



House

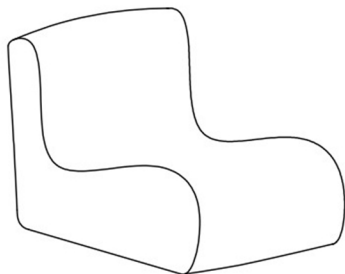


EXPLODED VIEW



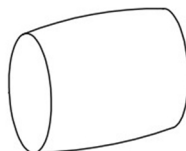
PARTS

A*1



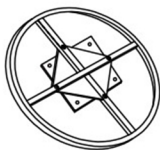
Sponge seat

B*1



Back cushion

C*1



Rotary base

HARDWARE

TOOL LIST

①*4



★ Bolts

②*1



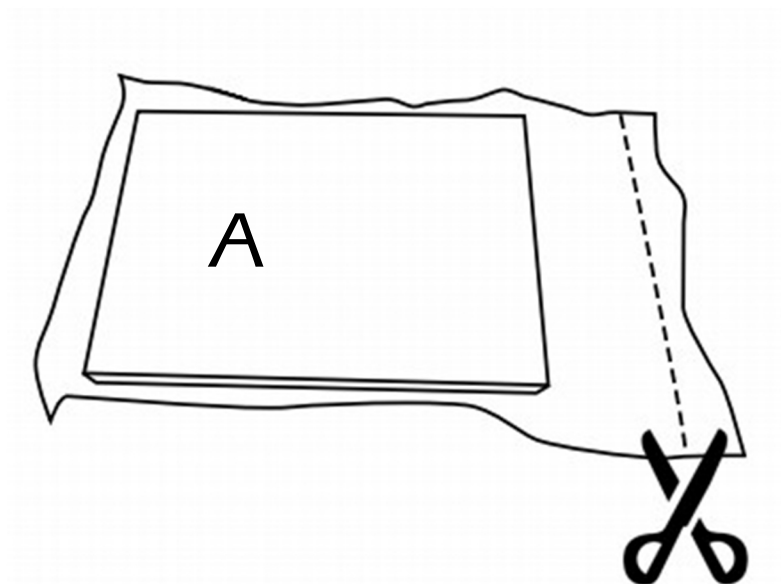
Allen key

PLEASE MAKE SURE ALL
HARDWARE&PACKING
MATERIAL FITTING THE LIST.
ESPECIALLY SOMESMALL
ACCESSORIES MAY BE MISSING
DURING TRANSPORTATION.
PLEASE CONTACT US
IF YOU HAVE ANY QUESTION.

NOTE: Designated with (★) We provide
additional spare parts in the hardware package

step 1

TAKE OUT THE CUSHION(A) FROM AIR COMPRESSION BAG AND WAIT FOR IT TO RECOVER, IT TAKES UP TO 72 HOURS TO BE FULLY RECOVERED, YOU MAY GENTLY SLAP ON IT TO SPEED UP THE PROCESS. PLEASE BE CAREFUL, DO NOT CUT YOURSELF OR PRODUCT.

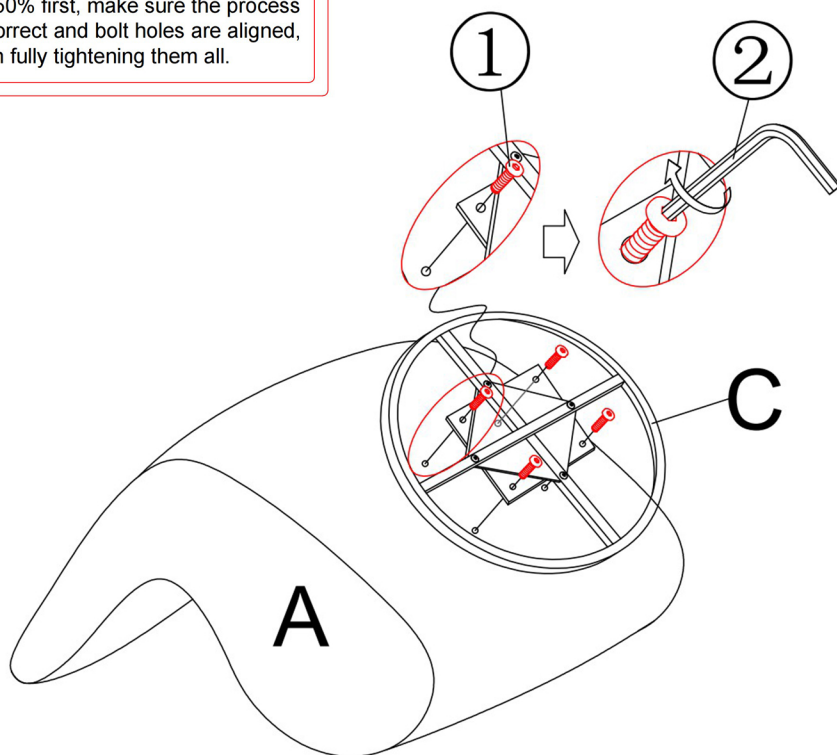


step 2

TURN THE SPONGE SEAT UPSIDE DOWN AND PLACE IT ON A CLEAN SURFACE. ALIGN THE ASSEMBLY HOLES ON THE ROTARY BASE WITH THOSE ON THE BOTTOM OF THE SEAT. SECURE THE ROTARY BASE TO THE CHAIR TIGHTLY USING SCREWS.

**Notice:**

We suggest tightening the bolts for 30-50% first, make sure the process is correct and bolt holes are aligned, then fully tightening them all.



step 3

CONGRADULATIONS! YOU HAVE FINISHED THE ASSEMBLY, THANK YOU AGAIN FOR CHOOSING OUR PRODUCT! PLEASE ENJOY!

