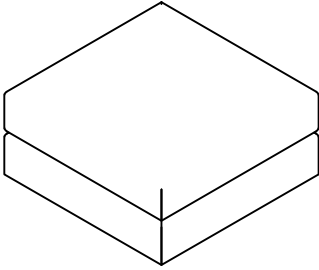


ASSEMBLY INSTRUCTIONS

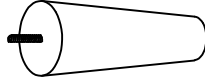
OTTOMAN WITH DOWN FEATHER CUSHION

A Ottoman



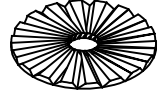
1pc

B Leg
(Inside the Ottoman)

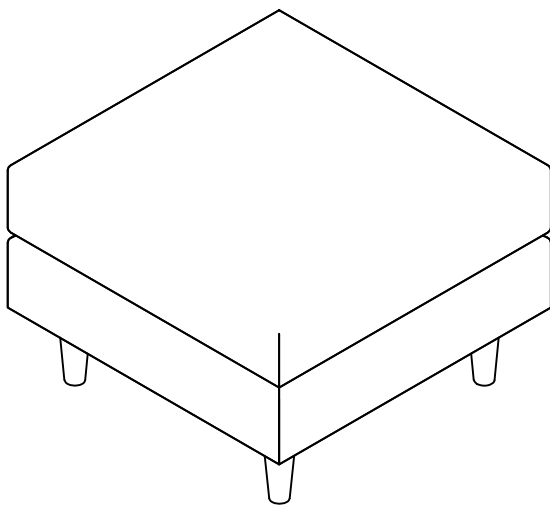


4pcs

C Plastic Washer
(Inside the Ottoman)
φ 2"

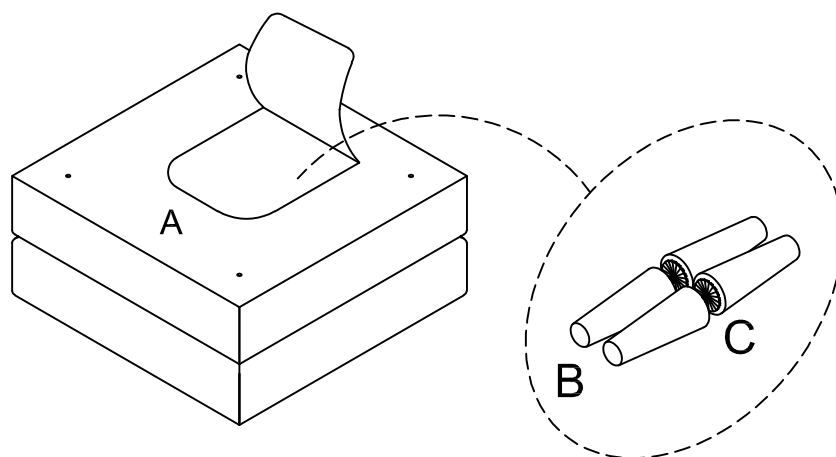


4pcs

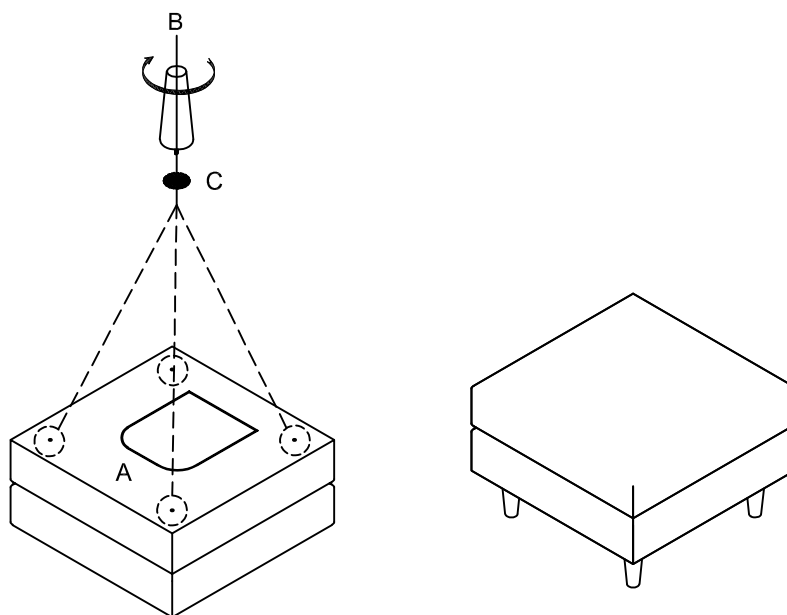


This page lists all the contents included in the box. Please take the time to identify the hardware as well as the individual components to this product. As you unpack and prepare for assembly, place the contents on a carpeted or padded area to protect them from damage.

1 Unzip the bottom of the Ottoman (A) to take out the Leg (B) and Plastic Washer (C).



2 Attach the Leg (B) with Plastic Washer (C) to the bottom of the Ottoman (A).



Cleaning & Care

Treat surfaces with care. Surfaces are resistant to scratches but are not scratch resistant. Clean surfaces with a dry or damp soft cloth. Do not use abrasive cleaners. Hardware may loosen over time. Periodically check that all connections are tight.