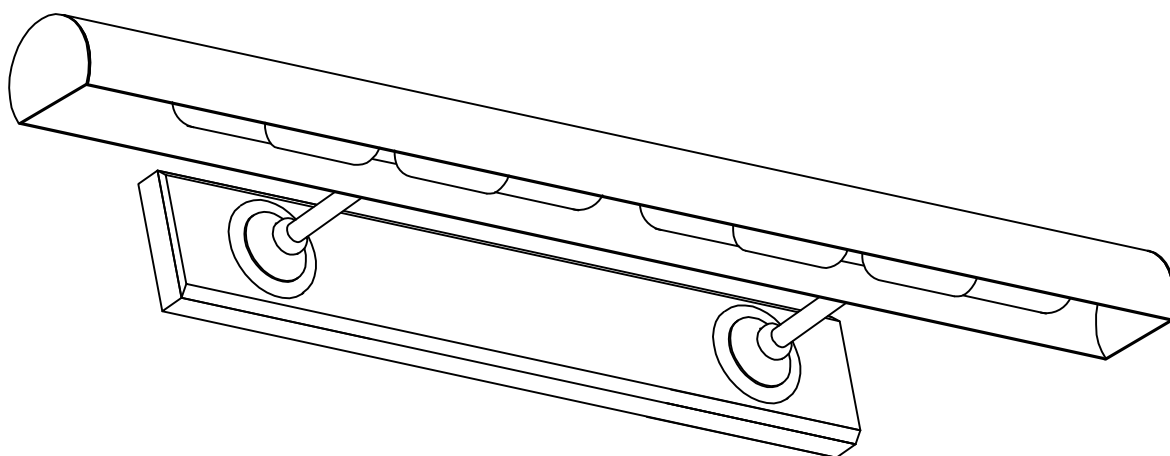
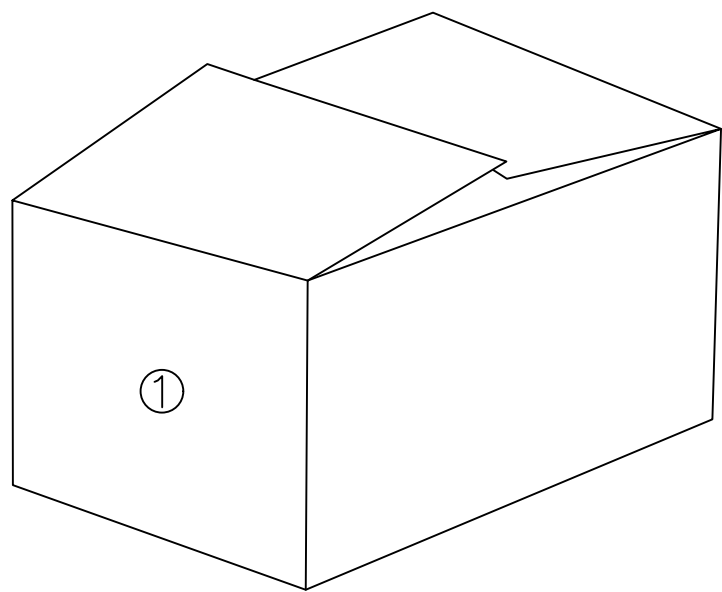


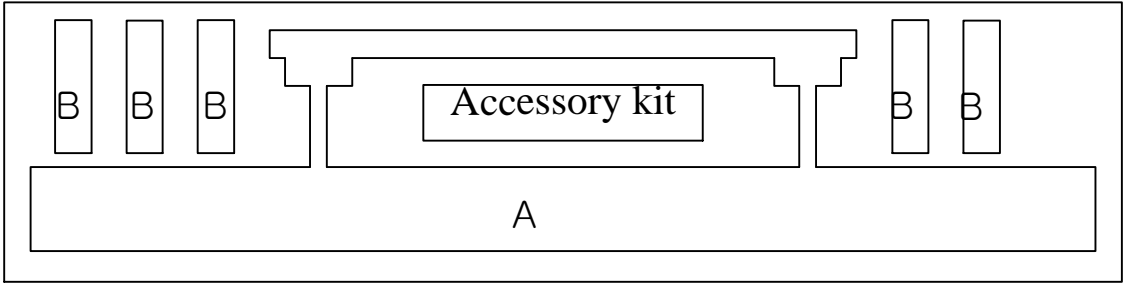
# Installation instruction



Packaging diagram:



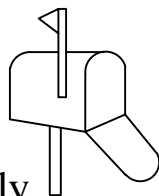
①



Internal packaging list:

- 1. First layer: lamp body + light source + Accessory kit

## Before assembly:



### ★Email:

Lighting@yxtservice.com.

If you have any questions,  
please feel free to contact us.

Wishing you a pleasant day!

★ Please read all the instructions carefully.

★ Keep the instruction manual for future reference



5 star rating

★ Separate and list all parts and hardware

Thank you

★ Read each step carefully and follow the correct installation order.



★ To avoid losing any parts during assembly, we recommend not moving the lamp before completing the assembly. Always place the product on a flat, firm, and stable surface.

★ Keep all small parts and packaging materials of this product away from babies and children, as they may cause serious injury.

### ★Product Parameters:

light:E12\*4    watt:3W(single)    color temperature:2700K

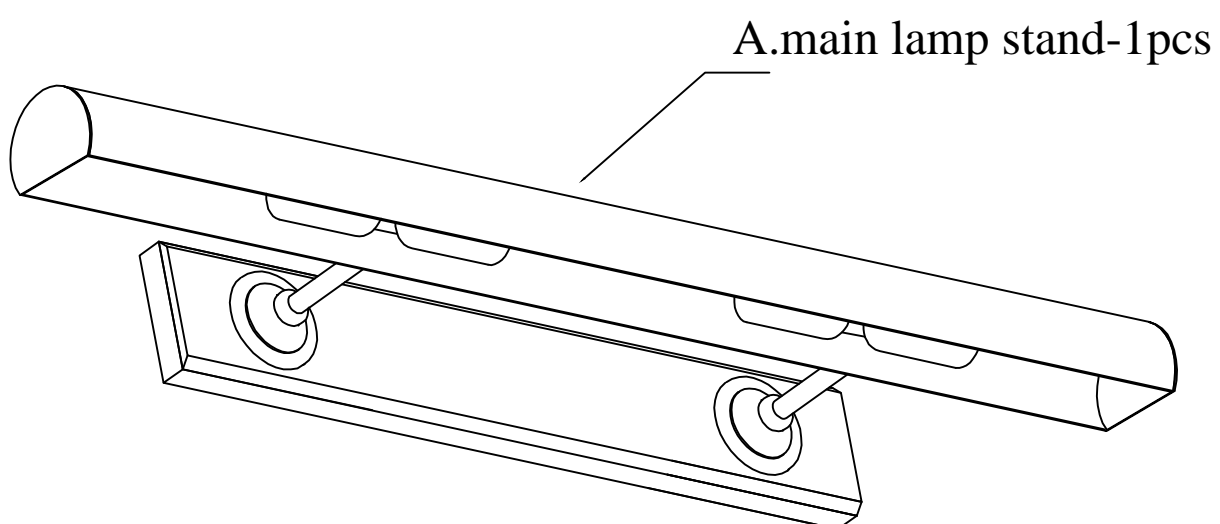
## Installation video and product website:

YouTube URL:<https://www.youtube.com/watch?v=awvuuJCOpDY>

Scan the QR code to view:

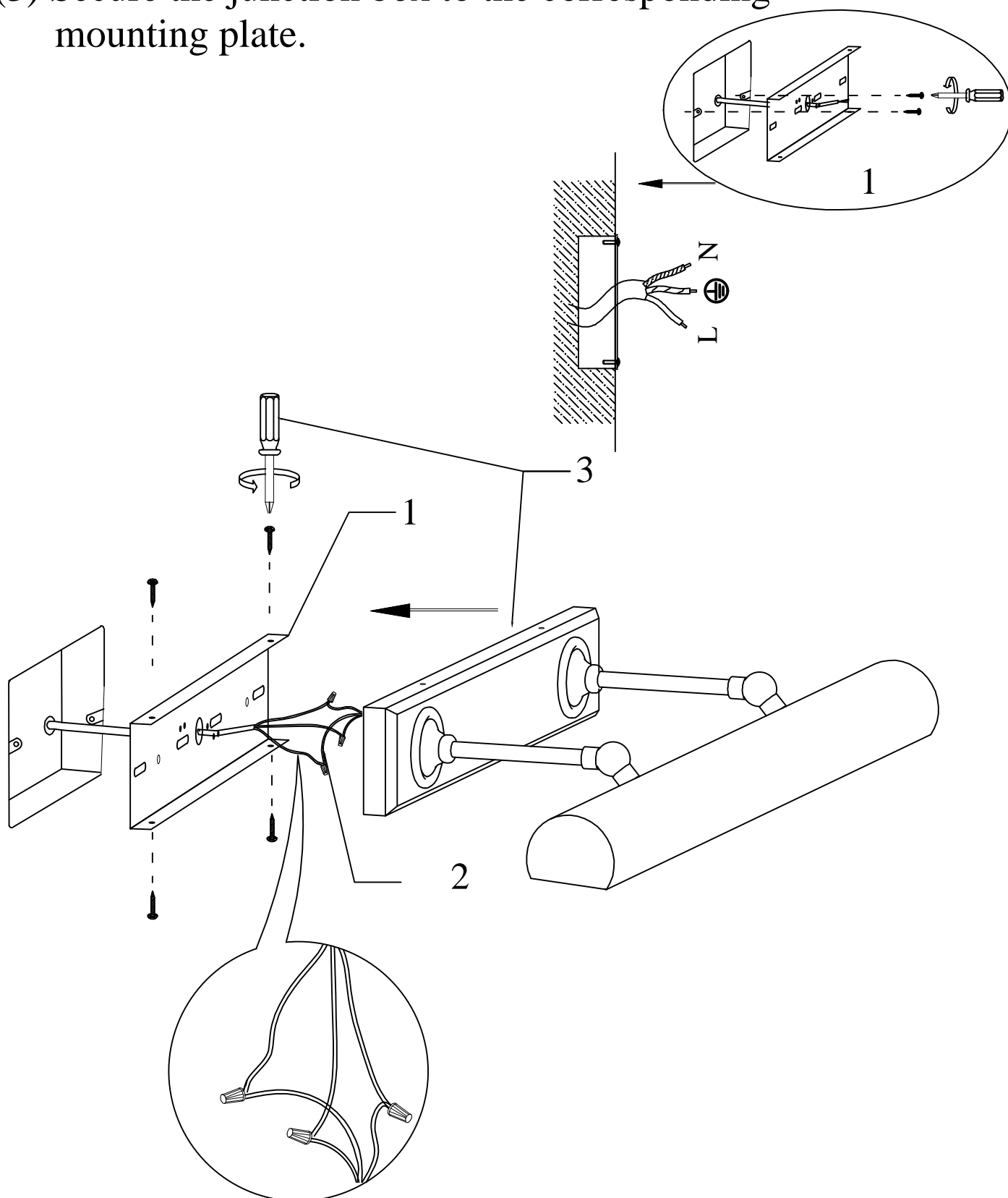


## Accessory list:



## ① lamp installation :

- (1) Take out the mounting plate and connect it to the wall.
- (2) Connect the power supply main wire to the main wire of the light fixture.
- (3) Secure the junction box to the corresponding mounting plate.



## ②lamp installation :

- (1) Screw the four E12 bulbs into the lamp holders.
- (2) Installation is complete.

After adjusting the angle of the  
lampshade, tighten the screw  
manually

