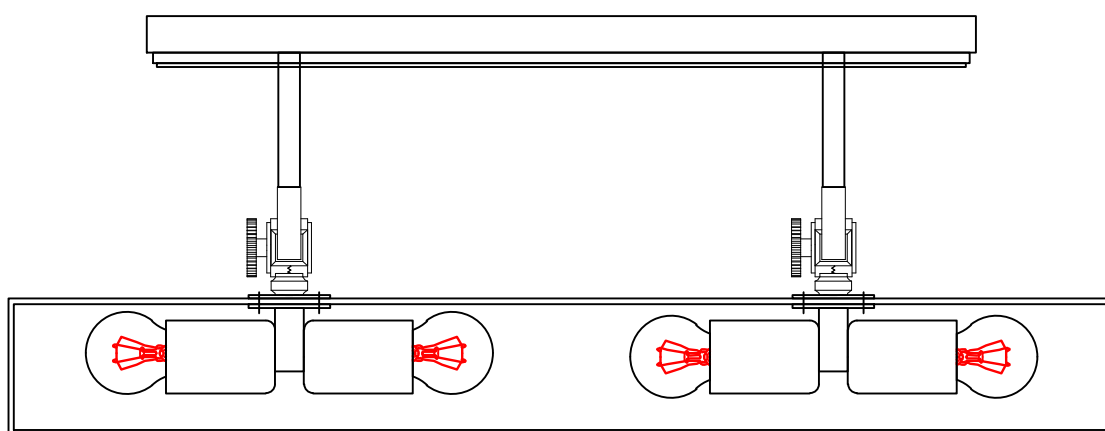
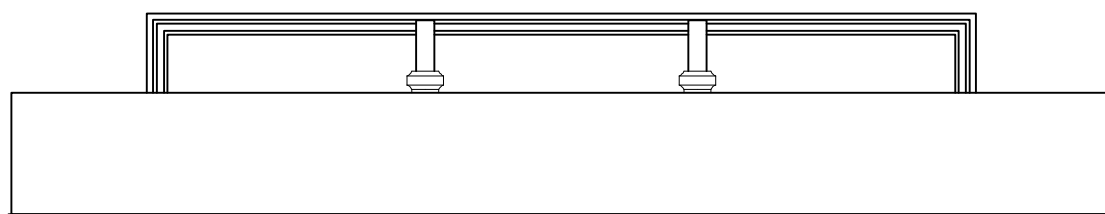
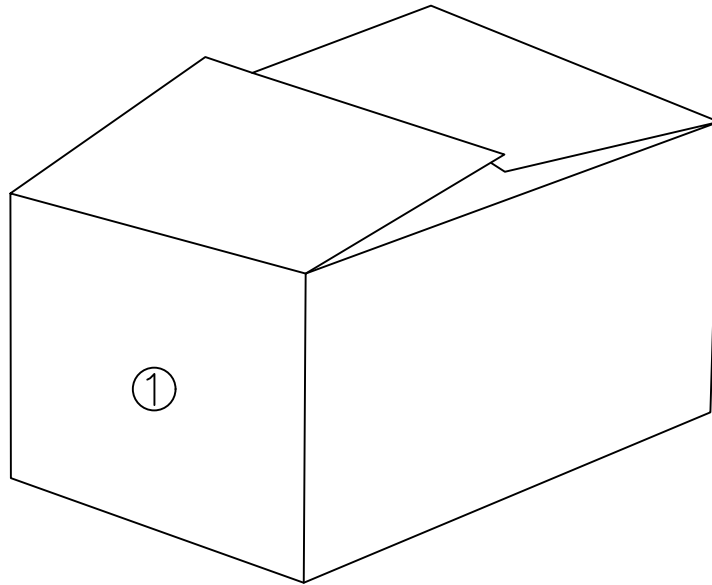


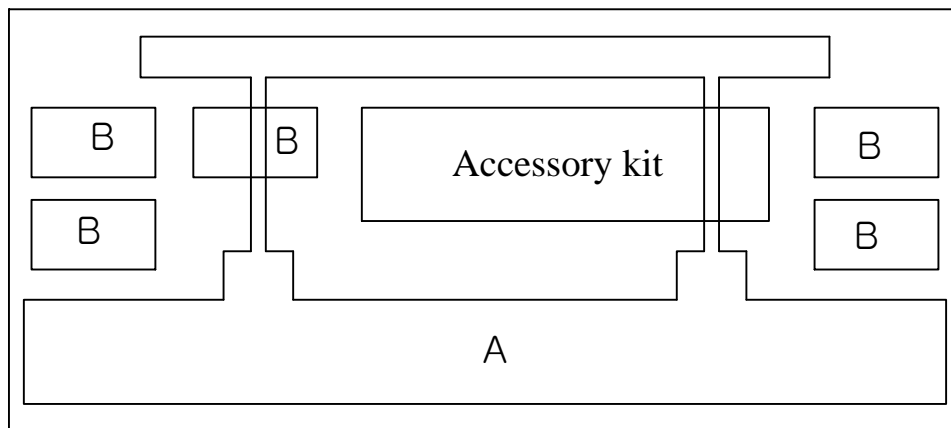
Installation instruction



Packaging diagram:



①

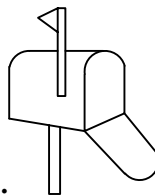


Internal packaging list:

1. First layer: lamp body + crystals + round rod suspension + light source + Accessory kit

Before assembly:

★ Please read all the instructions carefully.



★ Keep the instruction manual for future reference

★ Separate and list all parts and hardware

★ Read each step carefully and follow the correct installation order.

★ To avoid losing any parts during assembly, we recommend not moving the lamp before completing the assembly. Always place the product on a flat, firm, and stable surface.

★ Keep all small parts and packaging materials of this product away from babies and children, as they may cause serious injury.

★Email:
Lighting@yxtservice.com.
If you have any questions,
please feel free to contact us.
Wishing you a pleasant day!

★ ★ ★ ★ ★

5 star rating

Thank you



★Product Parameters :

light:E26*4 watt:4W (single) color temperature:2700K

Installation video and product website :

YouTube URL:<https://www.youtube.com/watch?v=0YKIZjMsW64>

Scan the QR code to view:



Accessory list:



2PCS



4PCS



6PCS

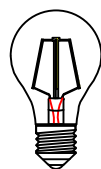
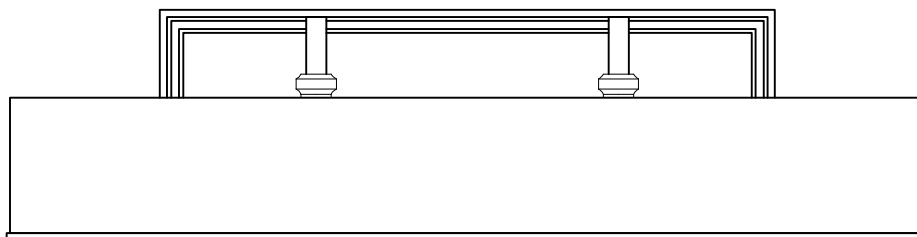


4PCS



4PCS

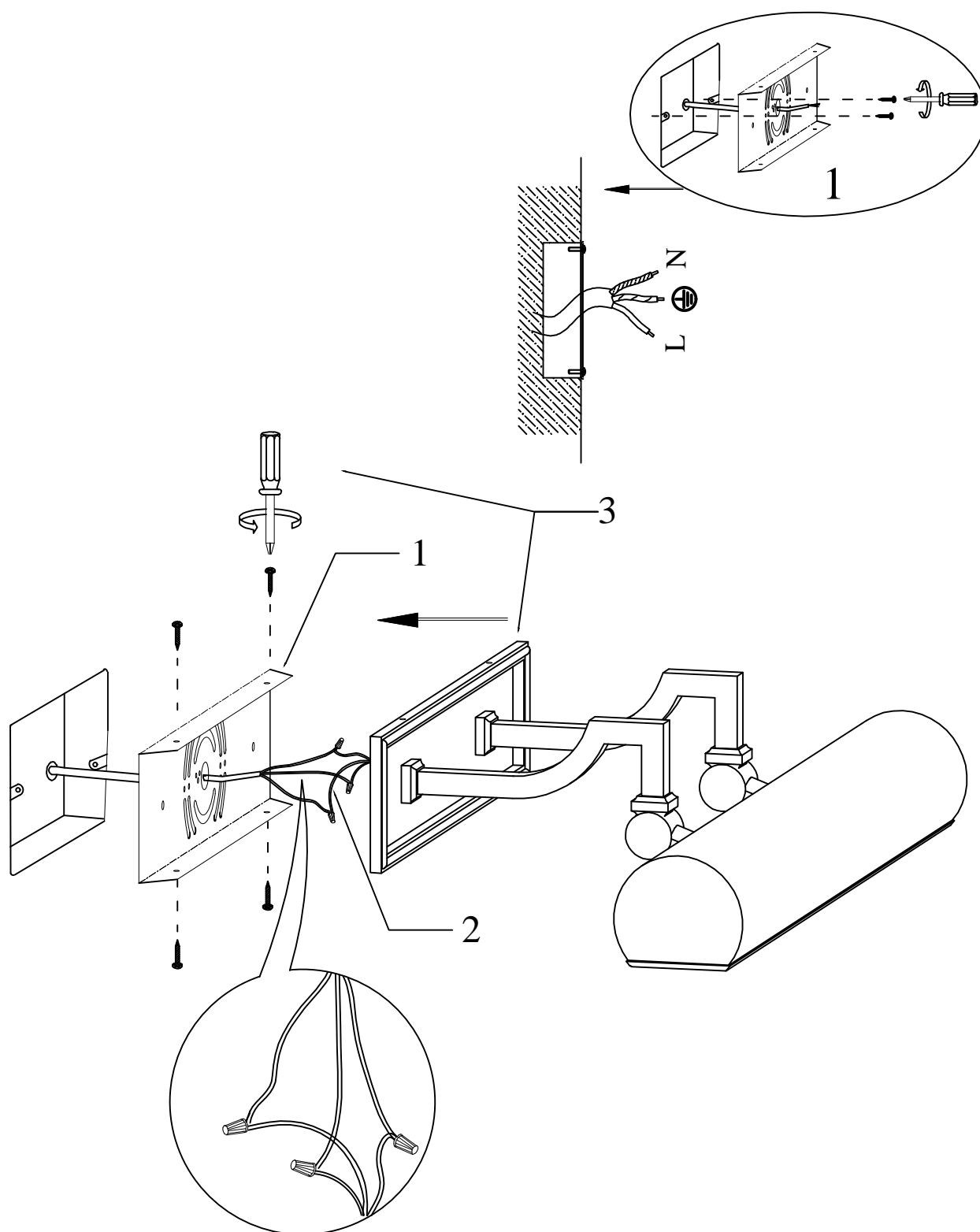
A.main lamp stand-1pcs



← B.light source-4pcs

①lamp installation :

- (1) Take out the mounting plate and connect it to the wall.
- (2) Connect the power supply main wire to the main wire of the light fixture.
- (3) Secure the junction box to the corresponding mounting plate.



②lamp installation :

- (1) Screw the three E26 bulbs into the lamp holders.
- (2) Installation is complete.

