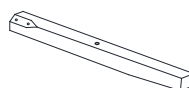
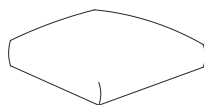
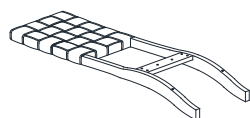


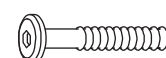
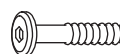
ASSEMBLY INSTRUCTIONS

DINING CHAIR WITH WOVEN BACK

A Chair Back	B Cushion Seat	C Front Leg (Left)	D Front Leg (Right)
---------------------	-----------------------	---------------------------	----------------------------



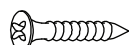
1 pc	1 pc	1 pc	1 pc
E Stretcher (Left)	F Stretcher (Right)	G JCBC Bolt M6 x 40mm	H JCBC Bolt M6 x 60mm



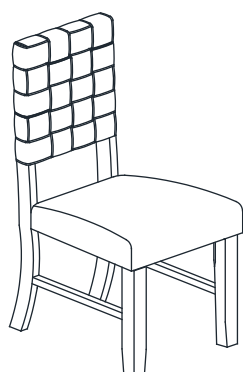
1 pc	1 pc	2 pcs	4 pcs
I JCBC Bolt M6 x 80mm	J Spring Washer M6 x 12mm	K Flat Washer M6 x 19mm	L Allen Key M4 x 100mm



4 pcs	10 pcs	10 pcs	1 pc
M Pan Head Screw M4 x 38mm			

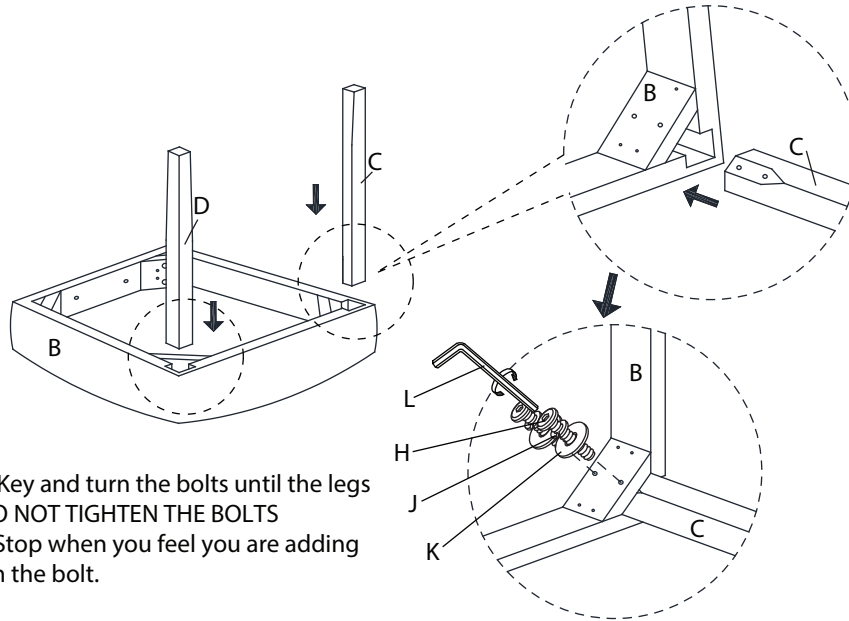


4 pcs



This page lists all the contents included in the box. Please take the time to identify the hardware as well as the individual components to this product. As you unpack and prepare for assembly, place the contents on a carpeted or padded area to protect them from damage.

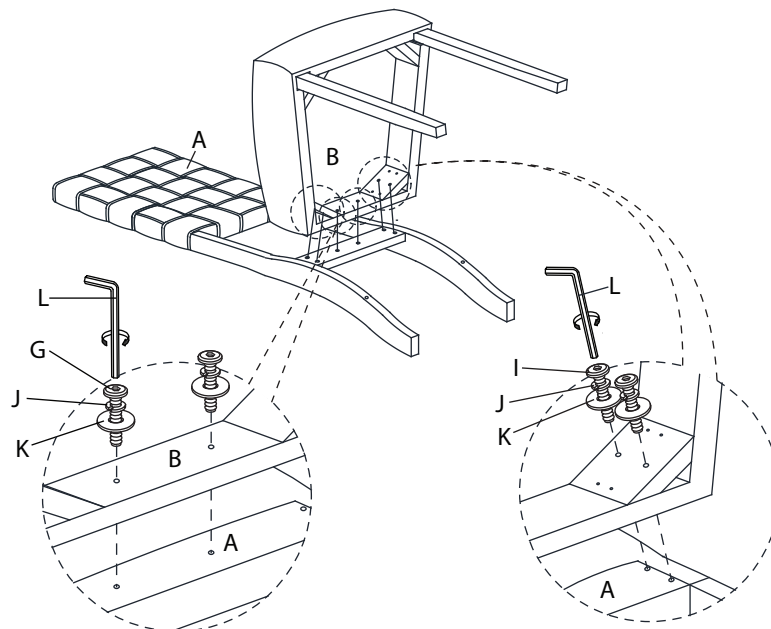
- 1 Place the Cushion Seat (B) upside down on a smooth carpeted surface. Attach the Front Leg (Left & Right) (C & D) to the Cushion Seat (B) using JCBC Bolt (H), Spring Washer (J) and Flat Washer (K) with the Allen Key (L).



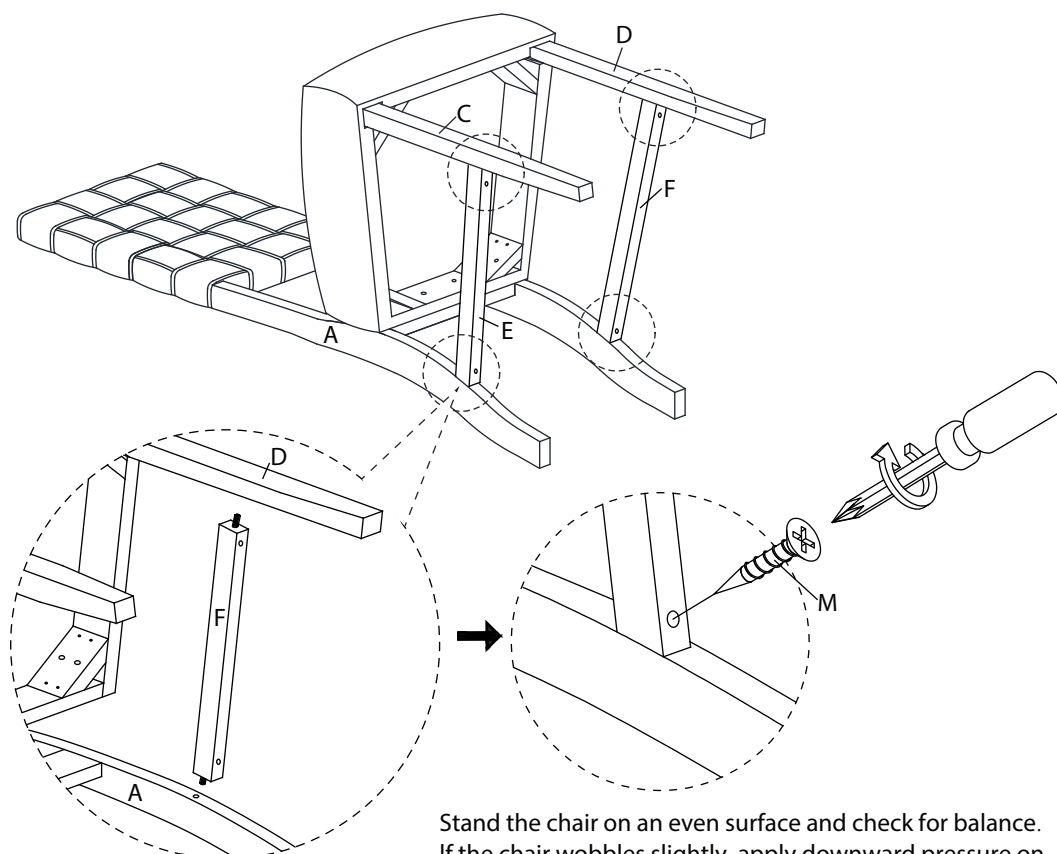
Take the Allen Key and turn the bolts until the legs are secured. **DO NOT TIGHTEN THE BOLTS COMPLETELY.** Stop when you feel you are adding force to tighten the bolt.

- 2 Place the Chair Back (A) upside down on a smooth carpeted surface. Attach the Cushion Seat (B) to the Chair Back (A) using JCBC Bolt (G) & (I), Spring Washer (J) and Flat Washer (K) with the Allen Key (L).

*Do not fully tighten the bolts.



-
- 3** Attach the Stretcher (Left & Right) (E & F) to the Chair Back (A) and Front Leg (Left & Right) (C & D) using Pan Head Screw (M) with a screwdriver (not provided).



Stand the chair on an even surface and check for balance. If the chair wobbles slightly, apply downward pressure on the uneven leg and tighten the bolts to correct the imbalance. Once the chair is balanced, apply downward pressure evenly in the center of the chair and tighten all bolts, being careful not to over-tighten beyond the hole depth.

Helpful Tip: While tightening the bolts from underneath, have someone sit in the chair.

Cleaning & Care

Treat surfaces with care. Surfaces are resistant to scratches but are not scratch resistant. Clean surfaces with a dry or damp soft cloth. Do not use abrasive cleaners. Hardware may loosen over time. Periodically check that all connections are tight.