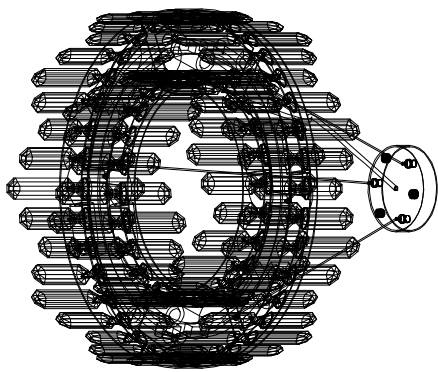
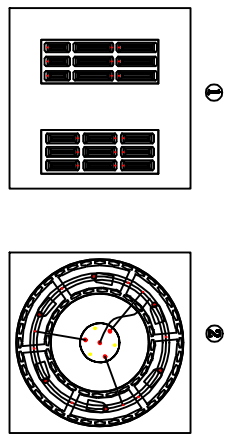
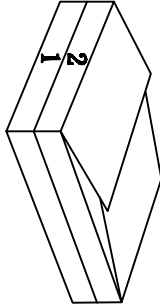


Installation Instructions

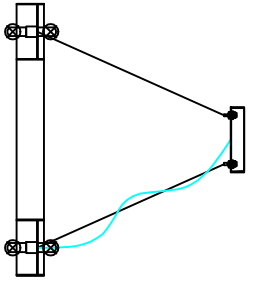
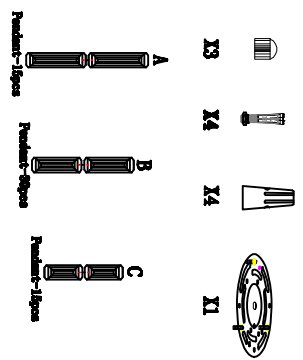


Packing List:



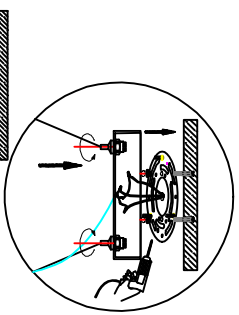
- Packaging Internal list
- 1,First layer of crystals
 - 2,Second Tier Light Stand Body + Accessory Kit

List



Light source and lamp body assembly:

- 1) Take out the lamp body and wiring kit.
- 2) Connect the main line of the power supply to the main line of the lamp body, and lock the switch key pin.
- 3) Connect X3 E12 bulbs into the lamp holder (not included in the product)
- 4) Adjust the wire length to the appropriate position.
- 5) Installation is complete.



Before Installation:

- ★ Please carefully read all steps.
- ★ Separate and list all parts and hardware.
- ★ Read each step carefully and follow the correct installation procedures.
- ★ Read each step carefully and follow the correct installation procedures.
- ★ To avoid losing any components during assembly, we recommend not moving the fixture until assembly is complete.
- ★ Keep all small parts and packaging materials of the product away from infants and children as they may cause serious injury.

★ Product Specification

Light Source: E12*12pcs Watt: 3W (per) Kelvin: 3000K

Installation Instruction Video:

Youtube URL: www.youtube.com/watch?v=7e0d507f0a4

Scan Code:



Crystal & Lamp Body Assembly:

- (1)Take out the crystals and put them into the lamp body according to the serial number.
- (2)Installation completed

