

⚠ WARNING

Children have died from furniture tipover. To reduce the risk of furniture tipover:

- ALWAYS install anti-tip device provided.
- NEVER put a TV on this product.
- NEVER allow children to stand, climb, or hang on any drawers, doors, or shelves.
- NEVER open more than one drawer at a time.
- Place heaviest items in the lowest drawers.



WE CARE ABOUT YOUR SAFETY PLEASE READ

- IMPORTANT SAFETY NOTICE**
READ CAREFULLY BEFORE BEGINNING ASSEMBLY
- This unit contains small parts that present a choking hazard for children under 3 years of age. These parts are for adult assembly only and should be permanently affixed to the furniture. Any unused parts should be discarded properly.
 - To make the assembly process easier, ask a friend to help you. ***2 people required***
 - Always use proper tools.
 - Carefully review the parts and hardware list.
 - It is recommended that you assemble the unit on a protected surface or carpeted floor to avoid scratches.
 - Follow assembly steps in order. DO NOT SKIP ANY STEPS.
 - Periodically check to ensure that all connectors (bolts, screws, etc.) are tight.
 - Keep the instructions for future reference.
- Warranter assumes no liability for damages or injuries which may occur due to failure to properly follow assembly instructions, properly assemble the product, or properly use the product.

WE WANT YOUR FURNITURE TO LAST PLEASE READ

CARE AND CLEANING INSTRUCTIONS
Congratulations on the purchase of your new product. Proper care and cleaning will extend the life of your purchase. To ensure your product maintains its finish and quality:

- Use a soft, clean cloth that will not scratch the surface when dusting.
- Clean only with a slightly damp cloth.
- Do not use chemical based products or solvents.
- Liquid spills should be removed immediately.
- Direct sunlight may fade or alter color of wood finishes.

WE'RE HERE IF YOU NEED IT CONTACT US

CUSTOMER SERVICE
To order replacement parts, or if you have any difficulty assembling this unit refer to the front page of this manual for model and serial # information along with finding the needed part number(s) from the parts list. Then call our customer service line. Please do not return parts to the store.

HEADS UP

45 Minutes
TIME

PEOPLE NEEDED
2

EFFORT SCALE
(you've got this)

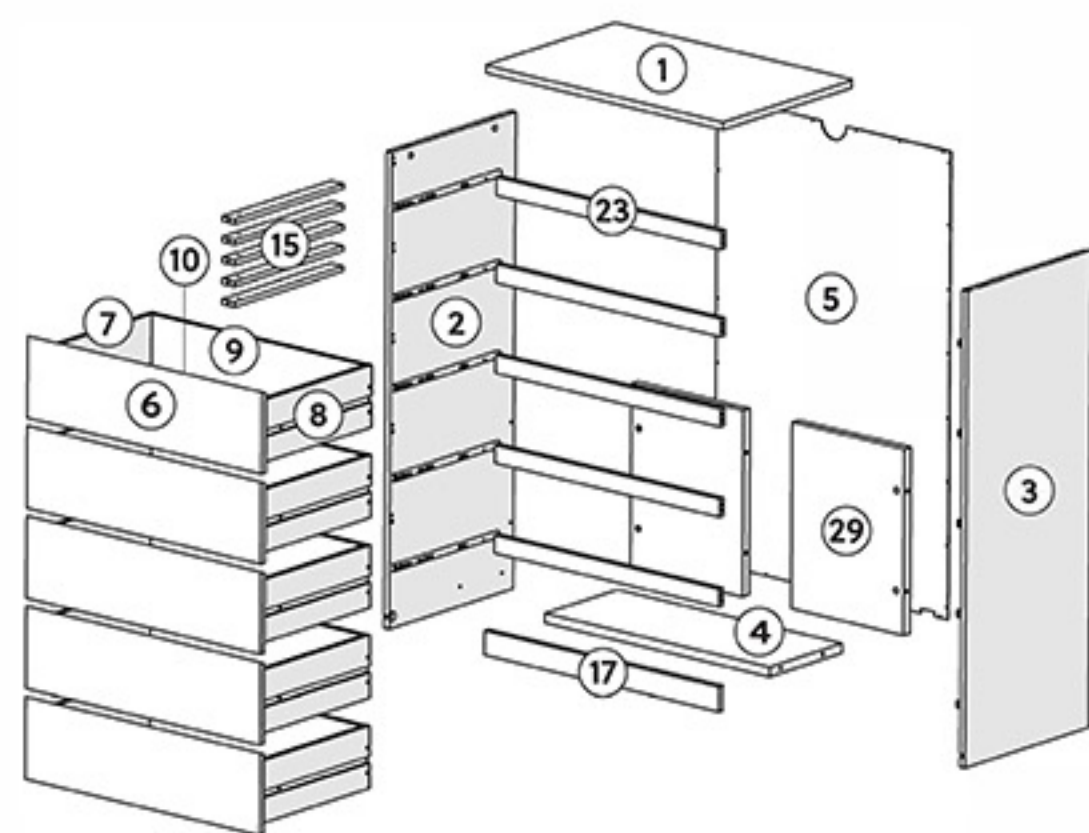
ANTI-TIP RESTRAINT

BUST OUT

REQUIRED TOOL

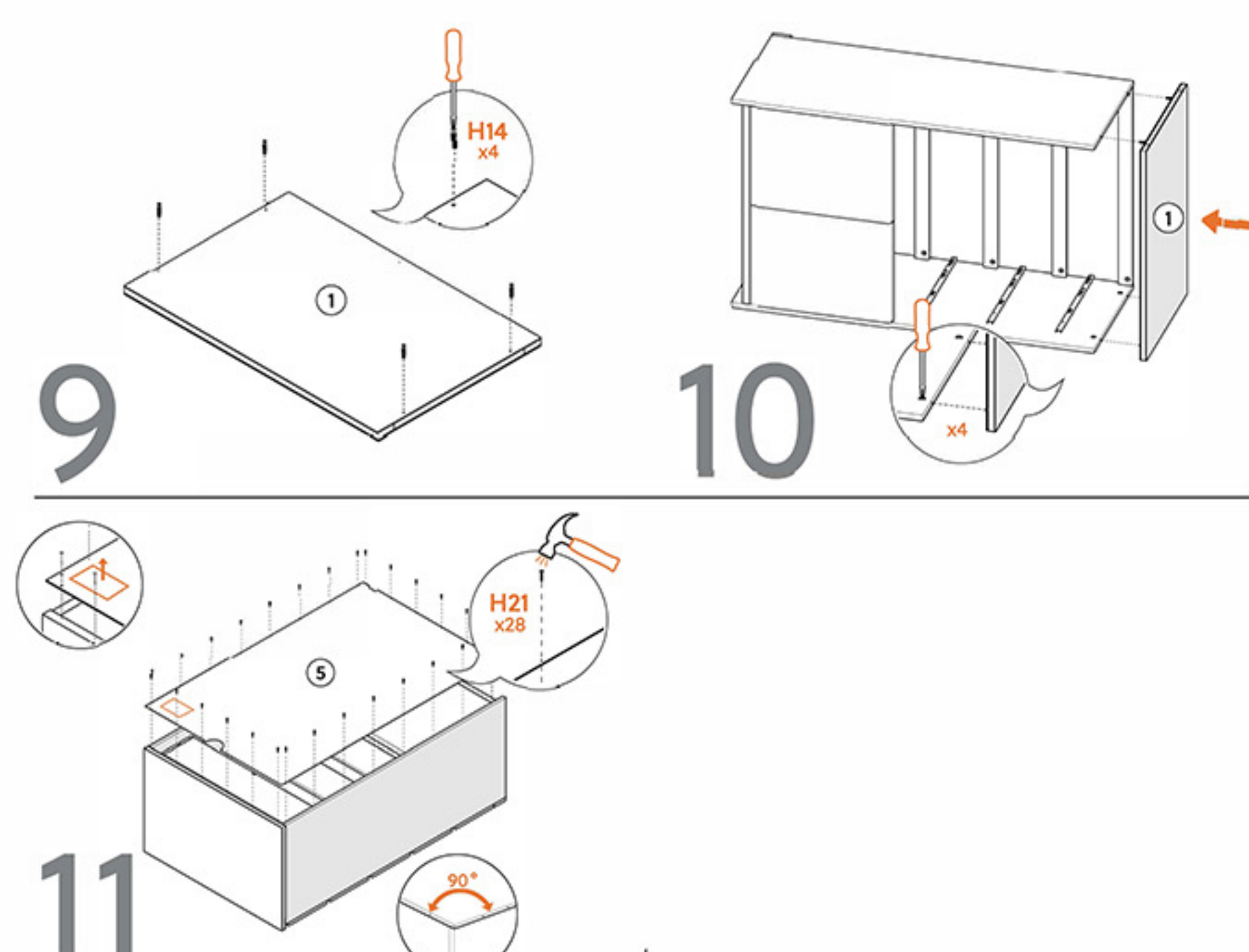
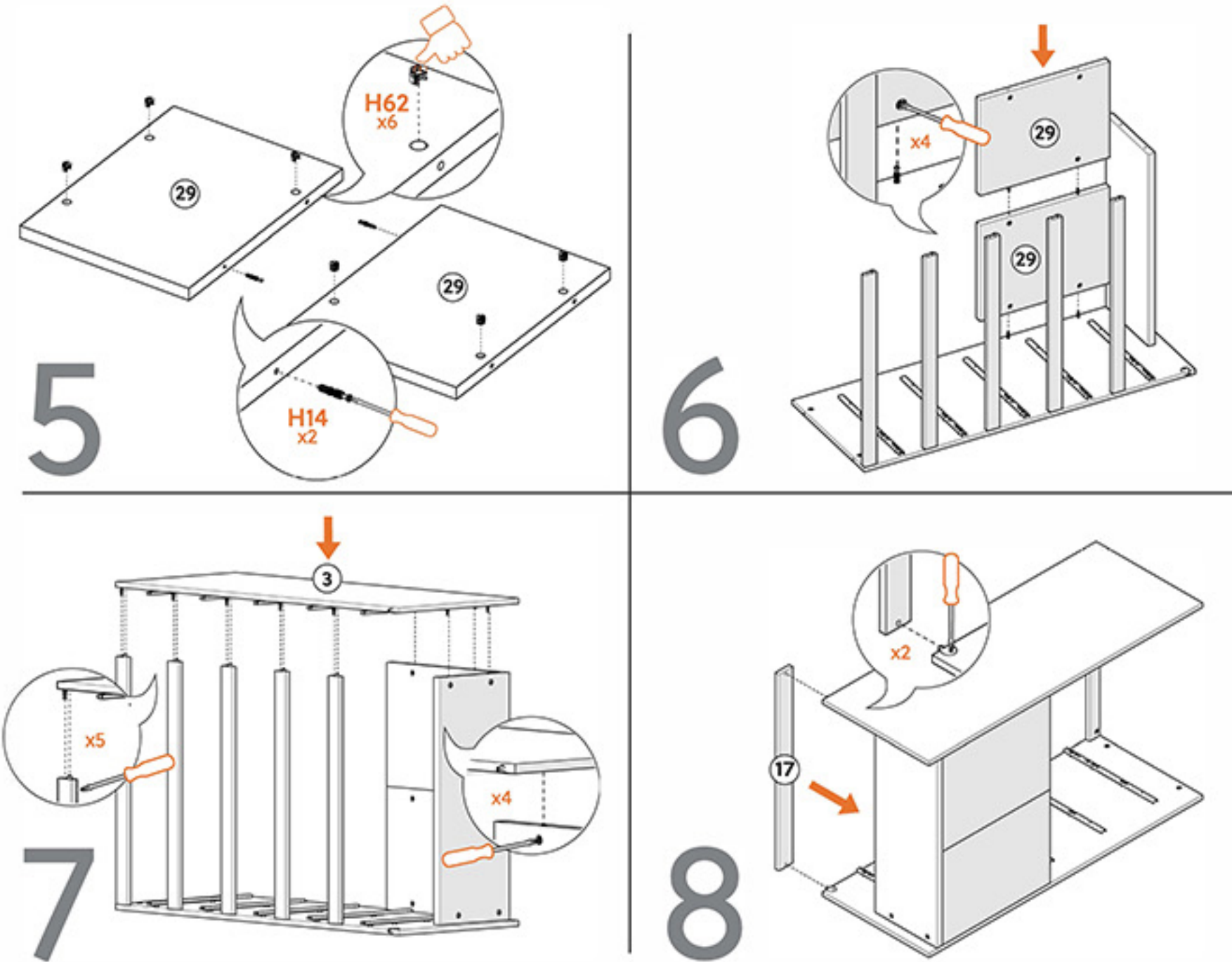
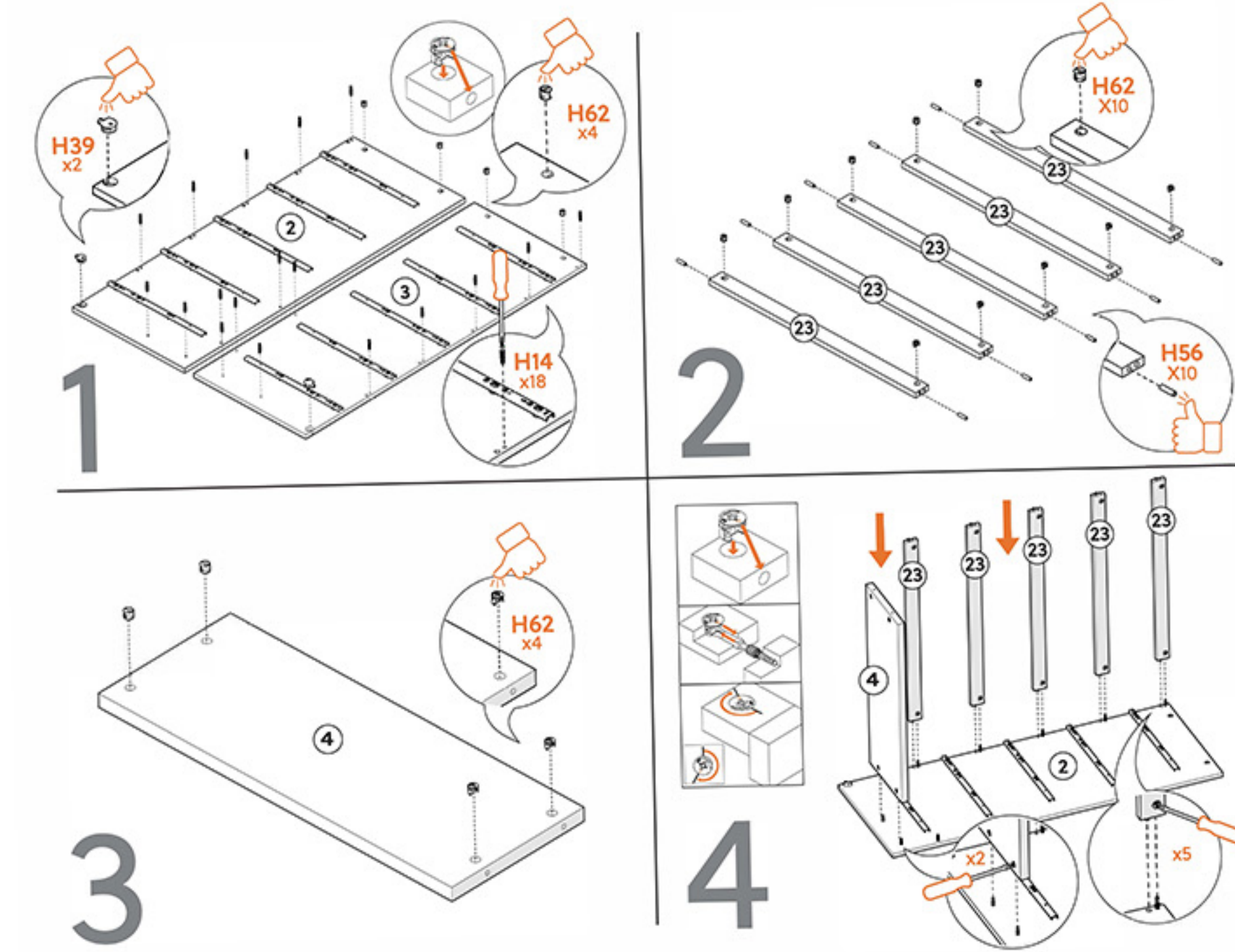
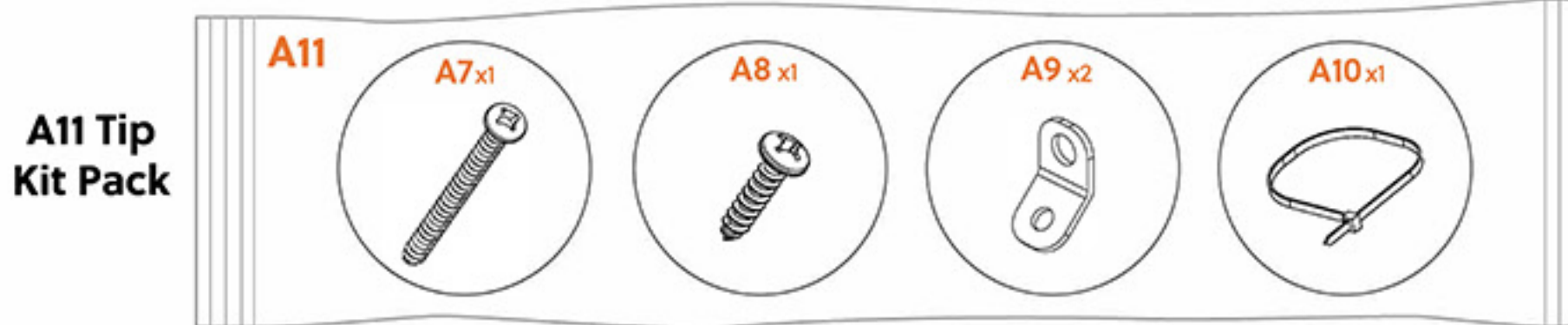
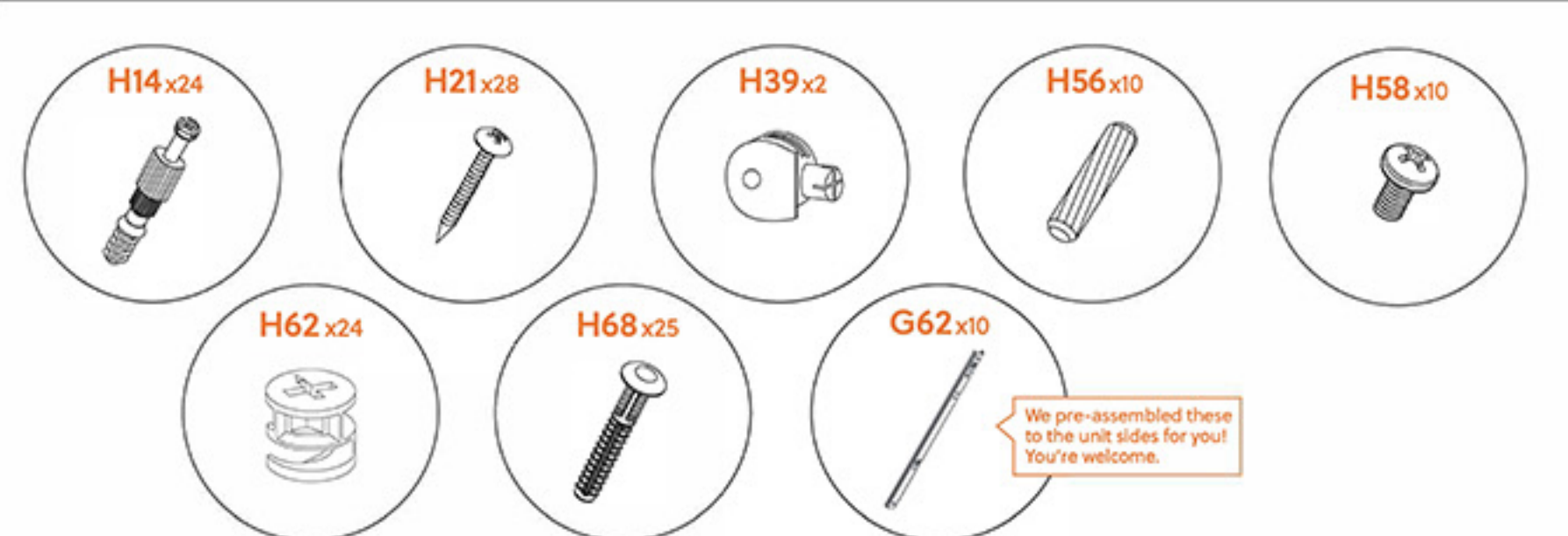
REQUIRED TOOL

- | | |
|------------------------|-------------------------|
| 1 TOP (1) | 8 DRAWER RIGHT SIDE (5) |
| 2 LEFT SIDE (1) | 9 DRAWER BACK (5) |
| 3 RIGHT SIDE (1) | 10 DRAWER BOTTOM (5) |
| 4 BOTTOM (1) | 15 DRAWER SUPPORT (5) |
| 5 UNIT BACK (1) | 17 BASESTRIP (1) |
| 6 DRAWER FRONT (5) | 23 SUPPORT RAIL (5) |
| 7 DRAWER LEFT SIDE (5) | 29 BALLAST PANEL (2) |

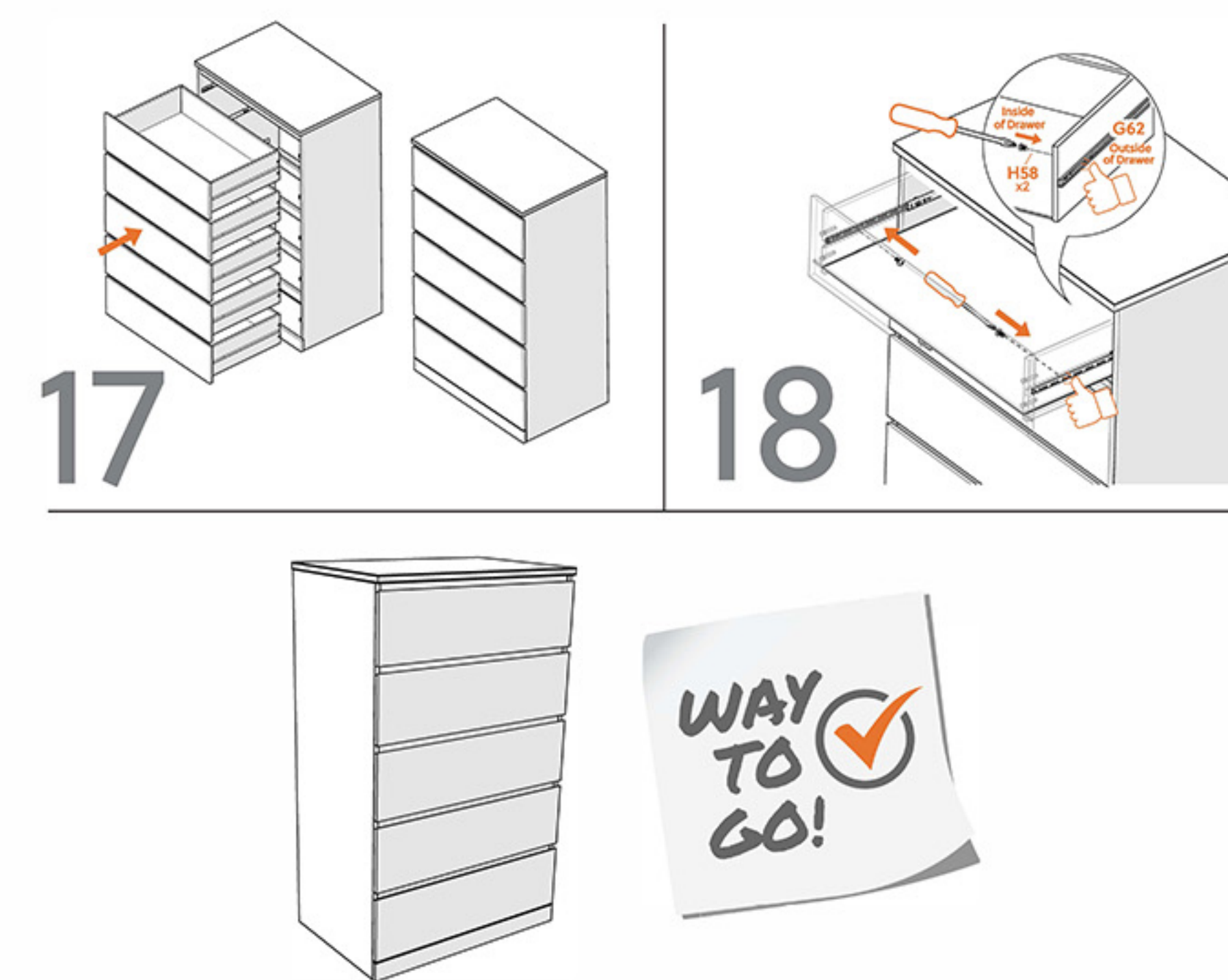
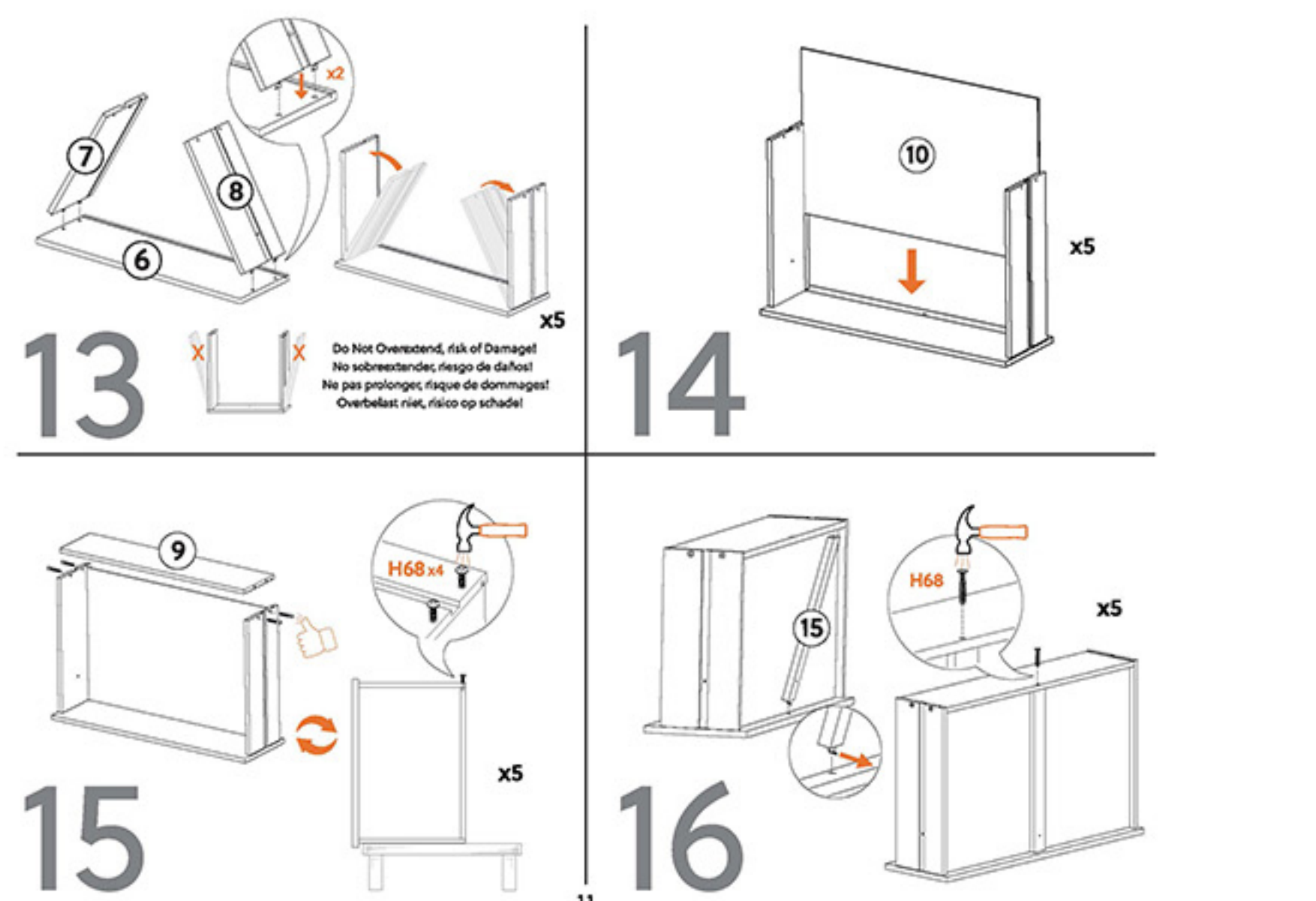
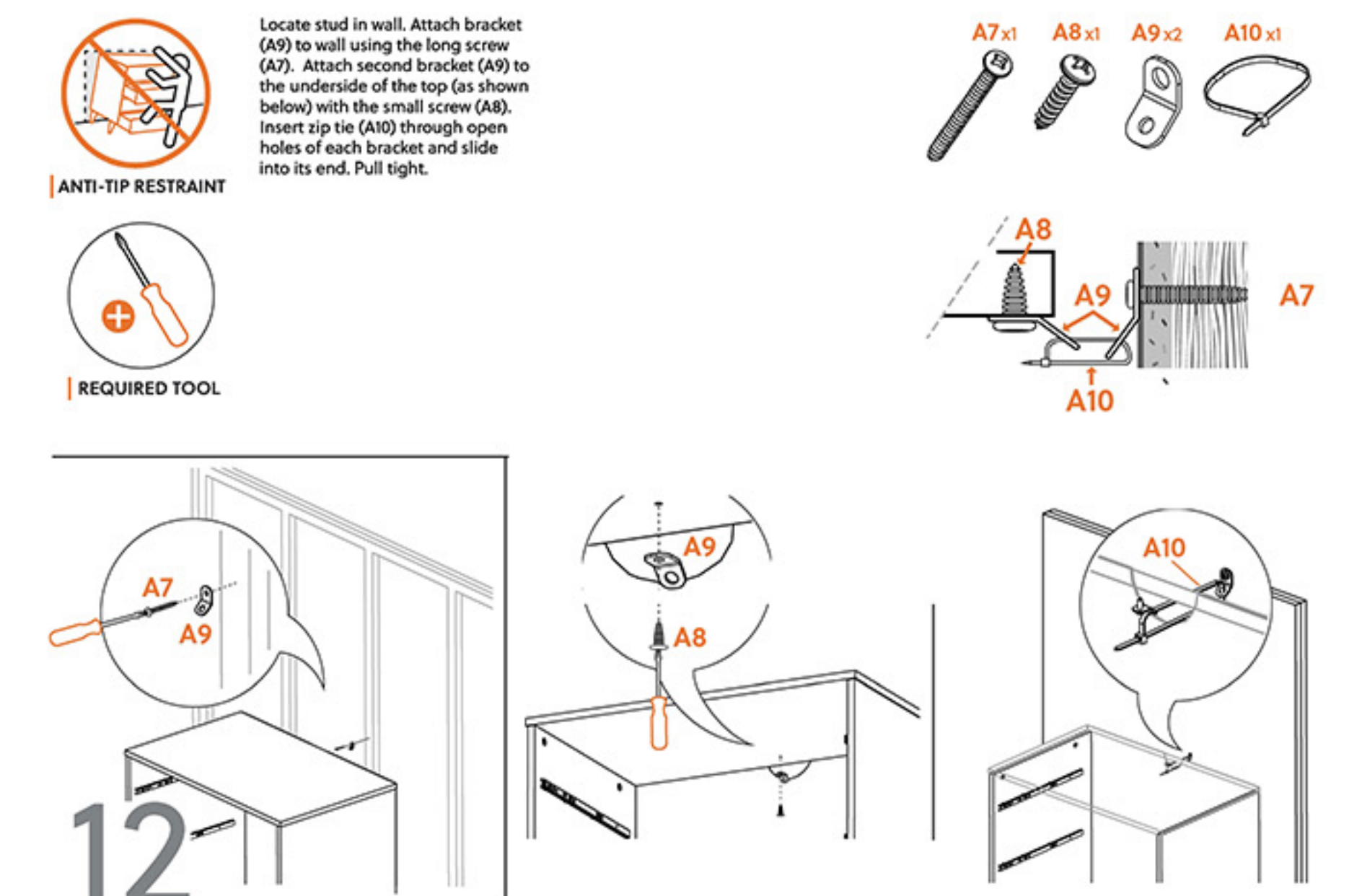


COMPONENTS

HARDWARE



ANTI-TIP RESTRAINT INSTALLATION



Warranty Information		
LIMITED WARRANTIES The following Limited Warranties are given only to the original retail purchaser, subject to all the terms and conditions below. These Limited Warranties are non-transferable. , subject to all the limitations and exclusions described in these Limited Warranties, warrants the following products and parts against material manufacturing defects for the duration set forth next to that product or part in the table below. All warranty periods commence on the date of delivery of the product.		
Product Part	Limited Warranty Duration	Labor Coverage
Frames Used in Upholstered & Leather Products	Limited Lifetime Warranty	1 Year
Springs	5 Year Limited Warranty	1 Year
Restroom Mechanisms	5 Year Limited Warranty	1 Year
Sleeper Mechanisms	3 Year Limited Warranty	1 Year
Unattached Cushioning***	1 Year Limited Warranty	1 Year
Attached Cushioning***	1 Year Limited Warranty	1 Year
Leather and Upholstery Fabric***	1 Year Limited Warranty	1 Year
Top of Bed	30 Days	30 Days
Finishes and all Other Furniture Products	1 Year Limited Warranty	1 Year