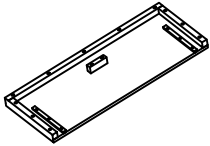


ASSEMBLY INSTRUCTIONS

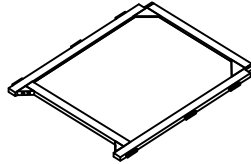
2-DOOR CABINET WITH GLASS DOOR

A Top Panel



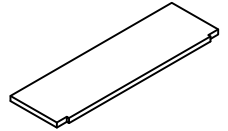
1 pc

B Back Panel



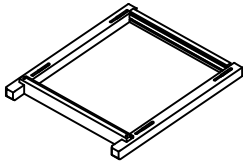
1 pc

C Shelf Panel



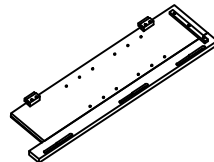
3 pcs

D Front Frame



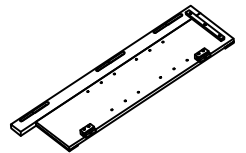
1 pc

E Left Side Frame



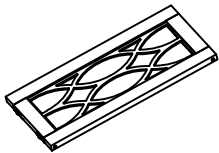
1 pc

F Right Side Frame



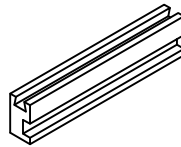
1 pc

G Door



2 pcs

H Connect Block



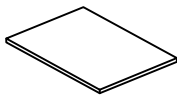
2 pcs

I Shelf Pin
1 3/16" x 23/32" x 19/32"



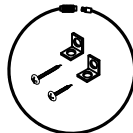
8 pcs

J Sticker

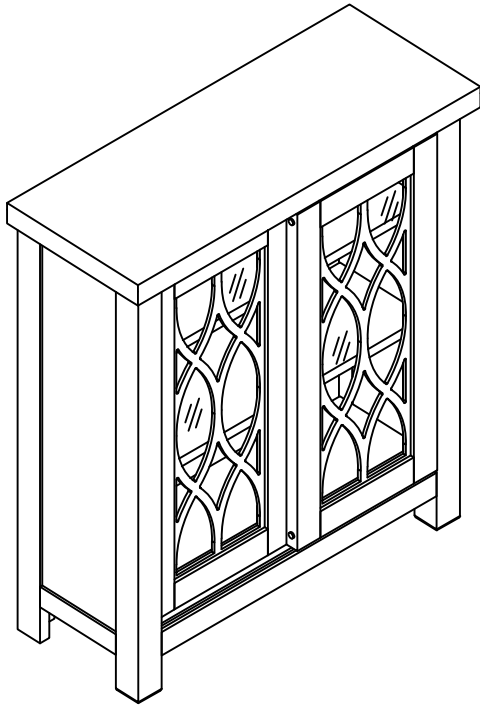


2 pcs

K Anti-Tip Kit

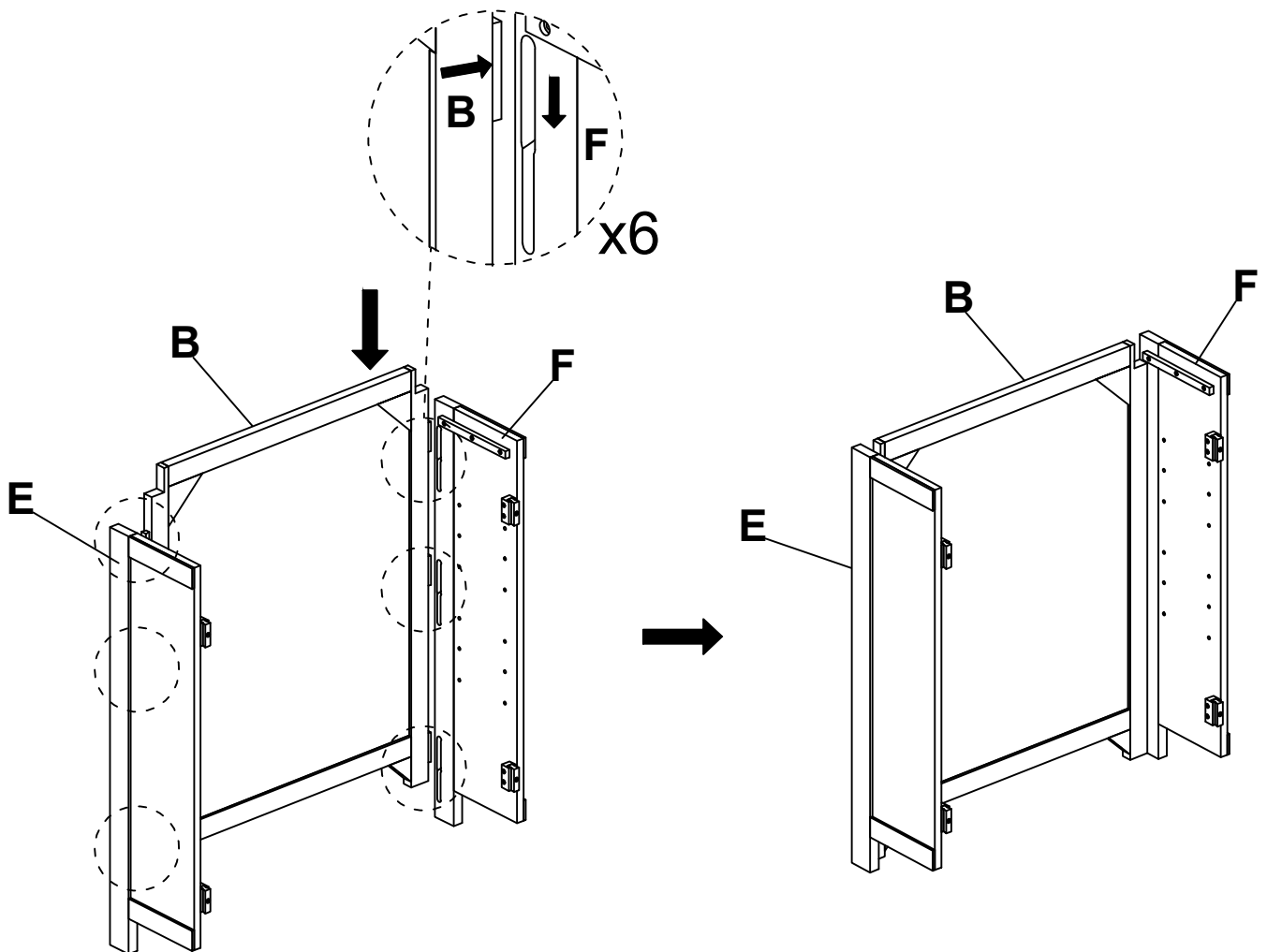


1 set

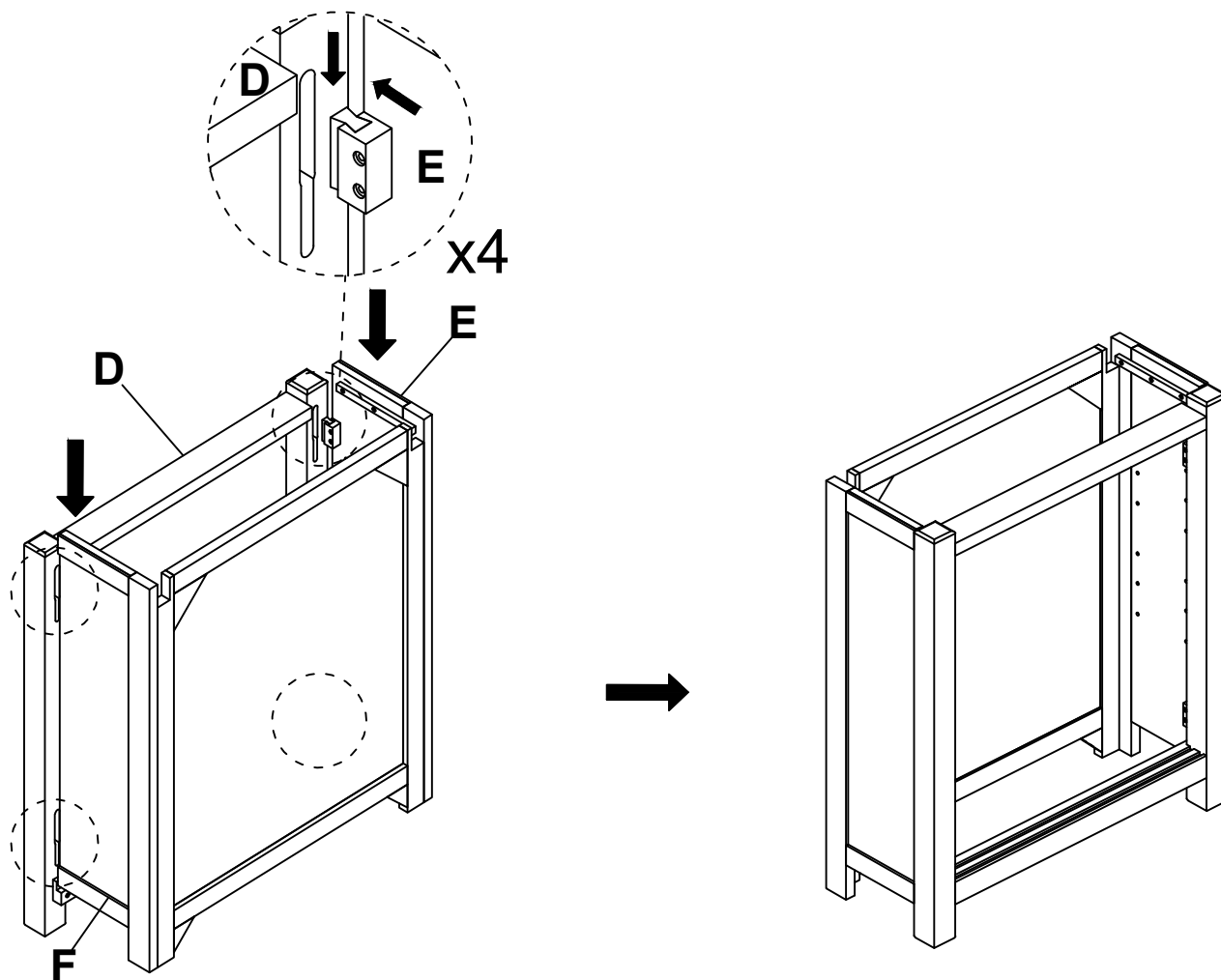


The above page lists all the contents included in the box. Please take the time to identify the hardware as well as the individual components to this product. As you unpack and prepare for assembly, place the contents on a carpeted or padded area to protect them from damage.

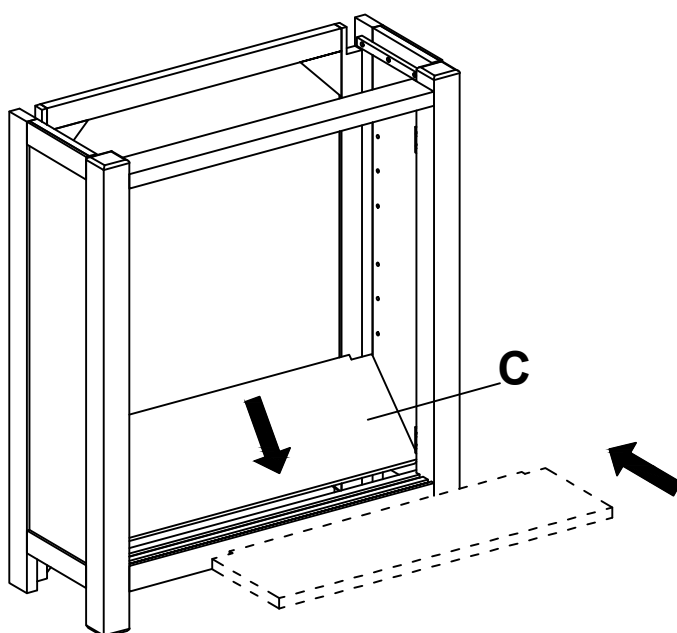
-
- 1** Slide the Back Panel (B) into the grooves of the Left & Right Side Frame (E & F).



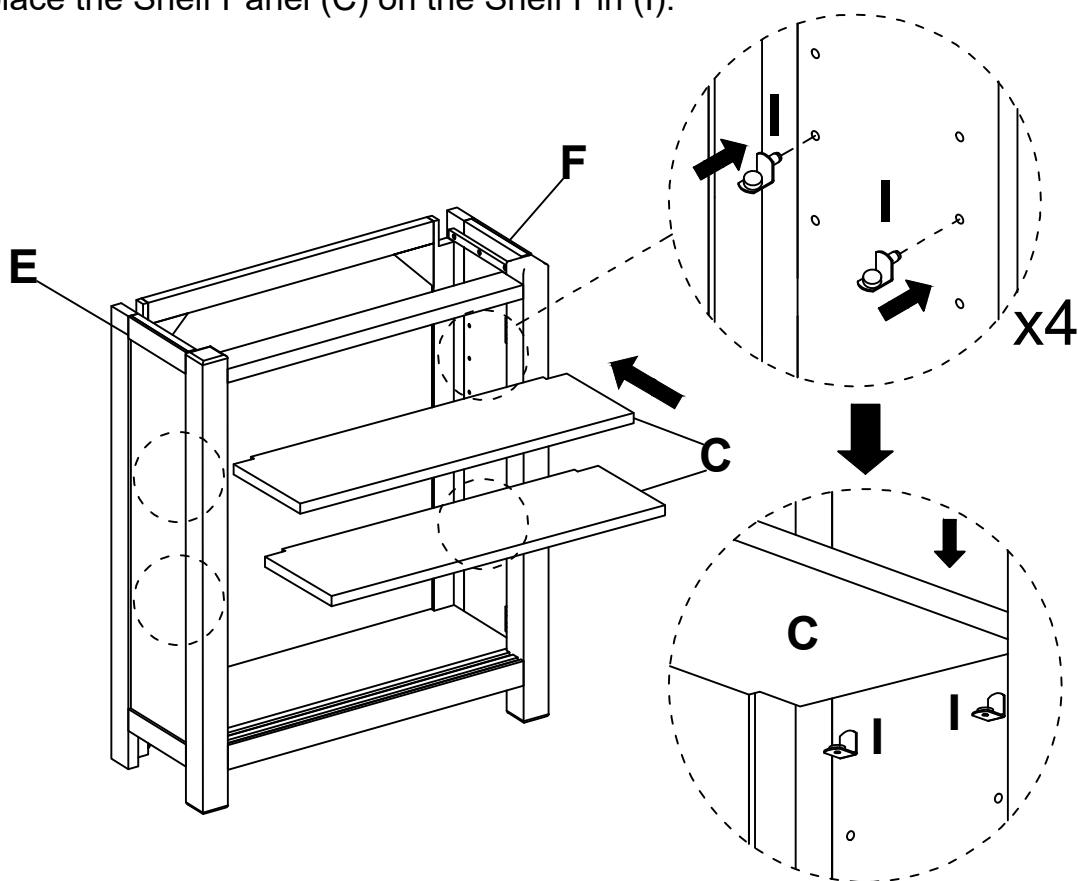
- 2** Slide the Left & Right Side Frame (E & F) into the grooves of the Front Frame (D).



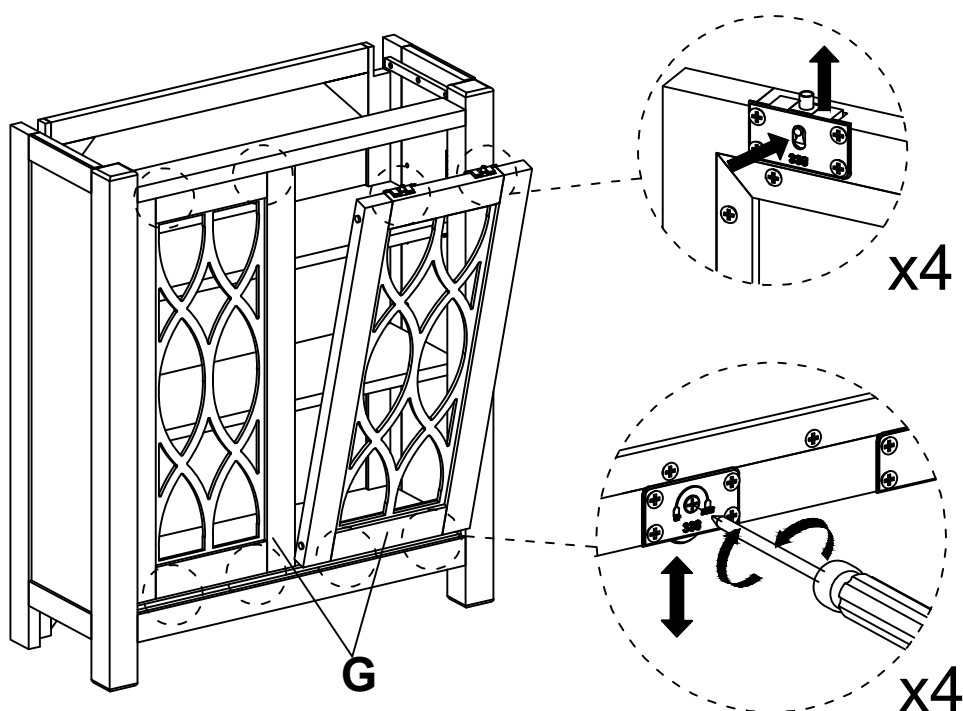
- 3** Place the Shelf Panel (C) at the bottom as shown.



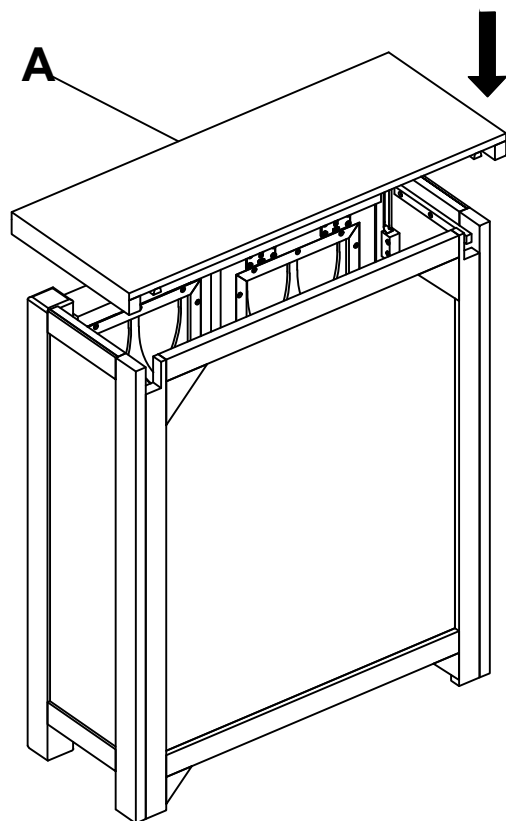
- 4** Insert the Shelf Pin (I) into the pre-drilled holes of the Left & Right Side Frame (E & F). Then place the Shelf Panel (C) on the Shelf Pin (I).



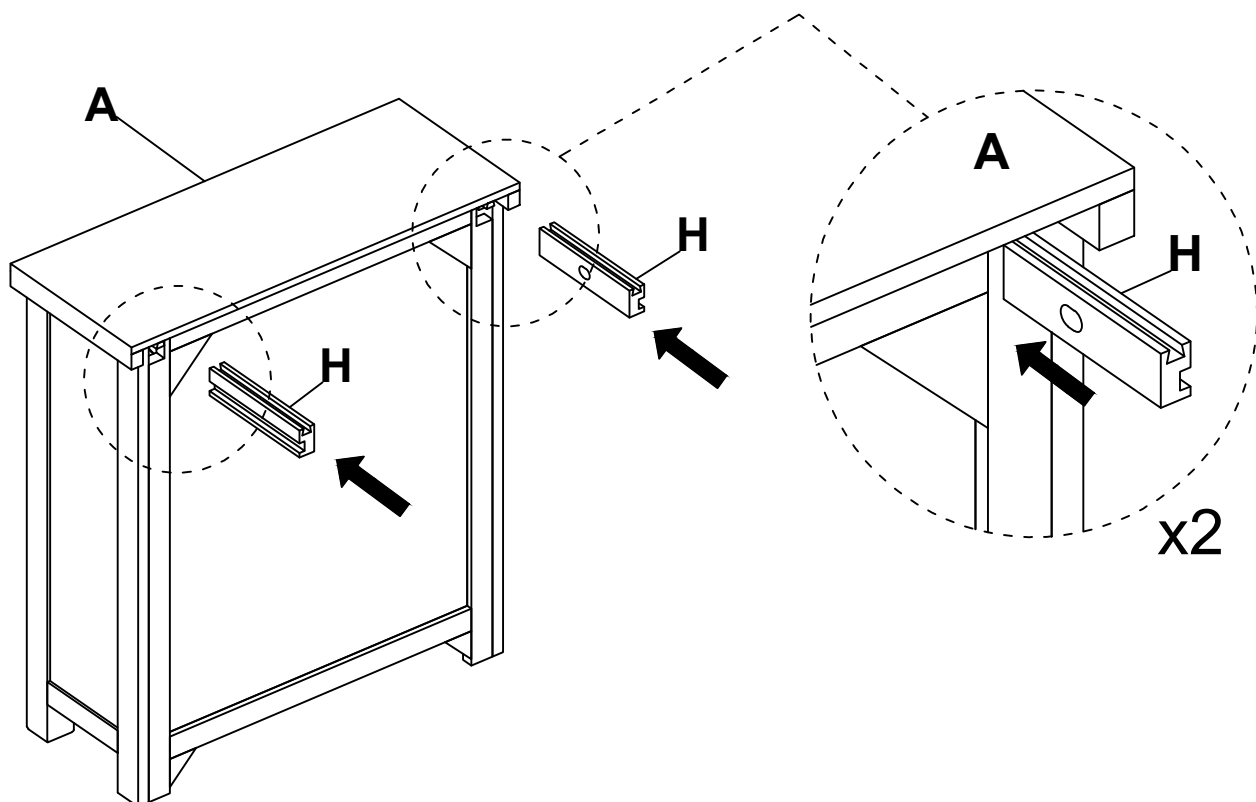
- 5** Attach the Door (G) to the assembled unit by pulling up the door latch and inserting it into the sliding groove. Adjust the door caster height to align the door gap with a screwdriver (not provided).



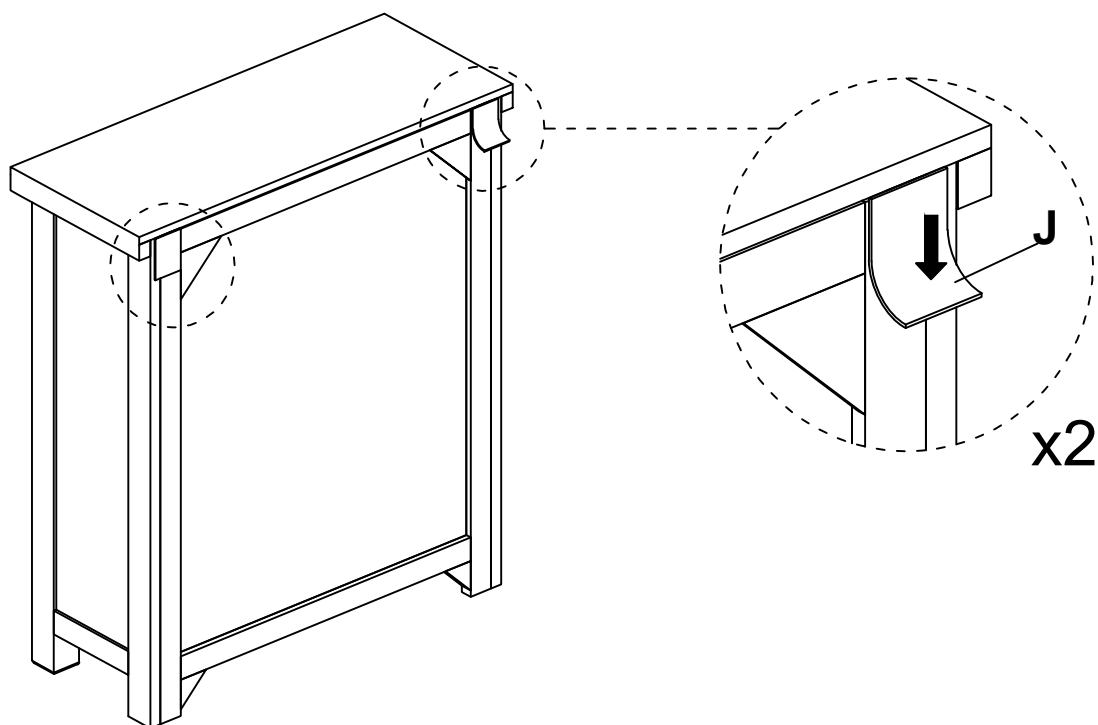
6 Attach the Top Panel (A) to the assembled unit.



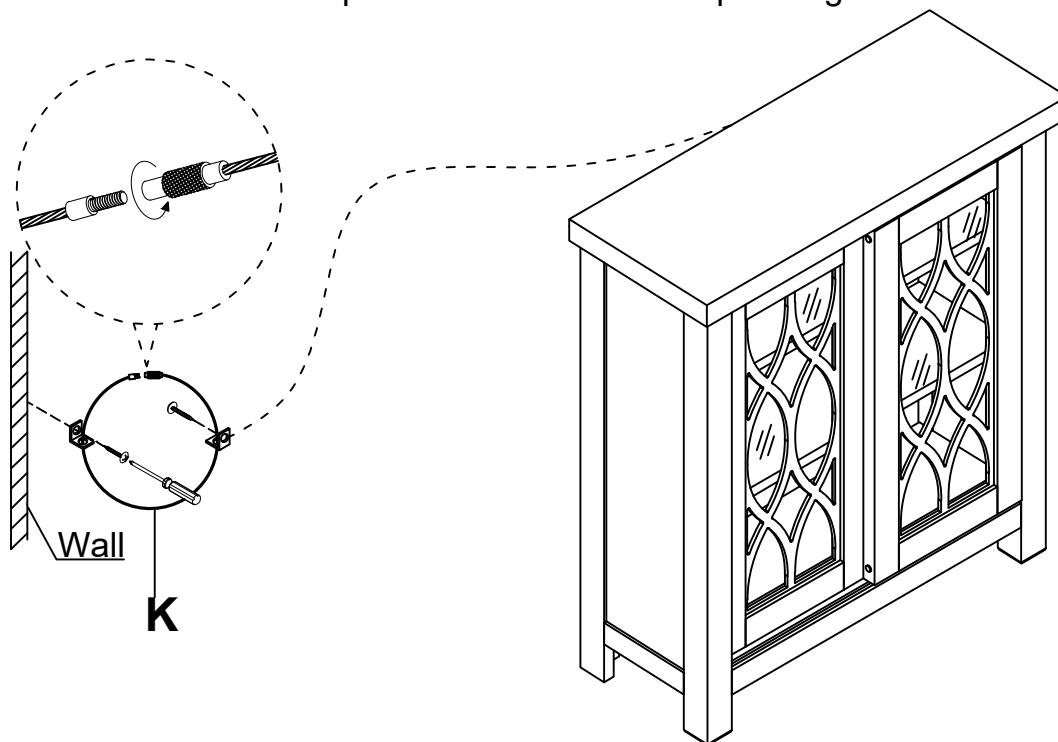
7 Insert the Connect Block (H) into the assembled unit to secure the Top Panel (A).



8 Apply the Sticker (J) to cover the holes.



9 Attach the Anti-Tip Kit (K) to the wall. Attach the bracket (vertically) to the wall using the long screw provided. Attach the bracket (vertically) to the back of the furniture (directly below top) using the short screw. Position the bracket as close to the center of the furniture back as possible in relation to the wall stud and the desired position in the room. Move the furniture to its final position. Thread the strap through the brackets and tighten it.



Cleaning & Care

Treat surfaces with care. Surfaces are resistant to scratches but are not scratch resistant. Clean surfaces with a dry or damp soft cloth. Do not use abrasive cleaners. Hardware may loosen over time. Periodically check that all connections are tight.