



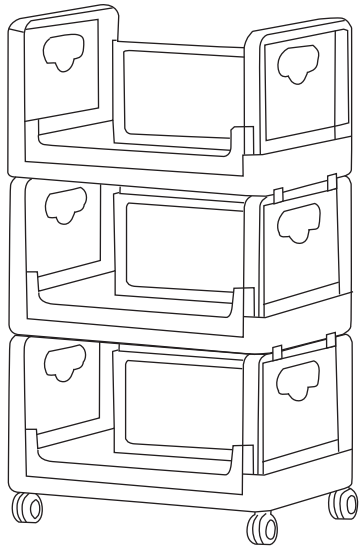
KHD-RSC-3T01-TPCW

Lot No.: SYSY-NO.1

## Instruction Manual

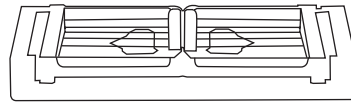
### Tips!

Check all the components & screws before assembly. Do not install in case part is missing, contact us to get. Send email with your question to support@vecelo.com. We will resend within 24 hours.



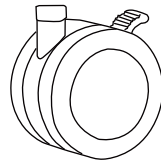
### Componets

A



3PCS

B



4PCS

### How to find us?

Email: support@vecelo.com

Website: www.vecelo.com

### Return Policy

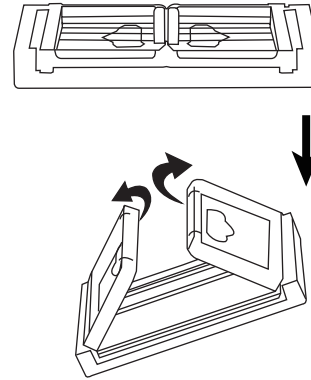
We believe you will absolutely love your new item. But if for some reason you want to return, please contact us directly before you decide to return your product. Our customer service organization can answer most concerns and assist you with any questions you may have about your new item, please email us first at: support@vecelo.com. The item must be returned within 30 days of delivery for a full refund. The item must be returned in good condition, in original box, with all original proof of purchase, parts and accessories.

### Trouble shooting

| Missing parts                                       | Other issues  |
|---|---|
| Send email with your question to support@vecelo.com | Send email with your question to support@vecelo.com |
| Resend within 24 hours                              | Resend within 24 hours                              |
| Issue resolved                                      | Issue resolved                                      |

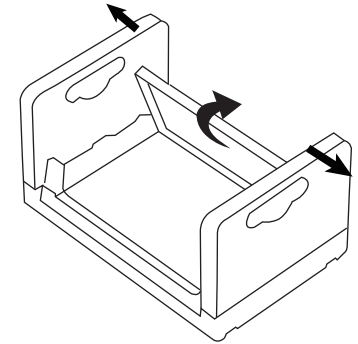
We control manufacturing and distribution ourselves, ensure the quality.

1

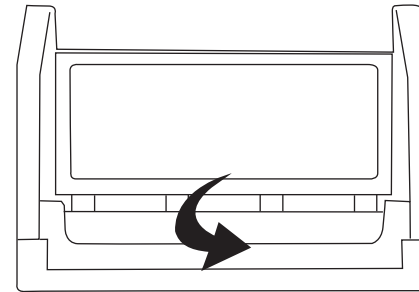


2

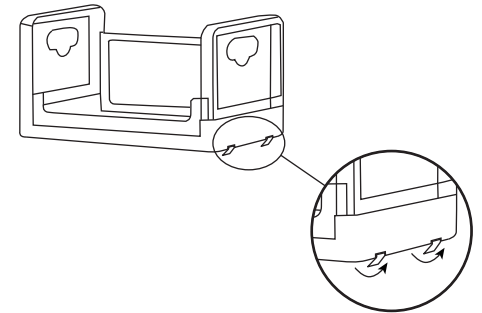
Gently bend the side panel outwards slightly after connecting it to the back panel.



3

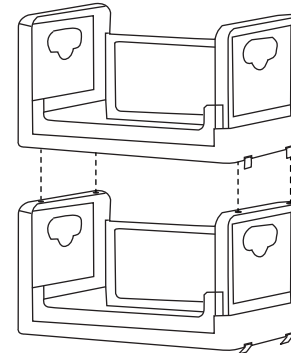


4



5

Align the bottom post with the top hole and press the connecting clasp to secure.



6

Align the bottom post with the top hole and press the connecting clasp to secure.

