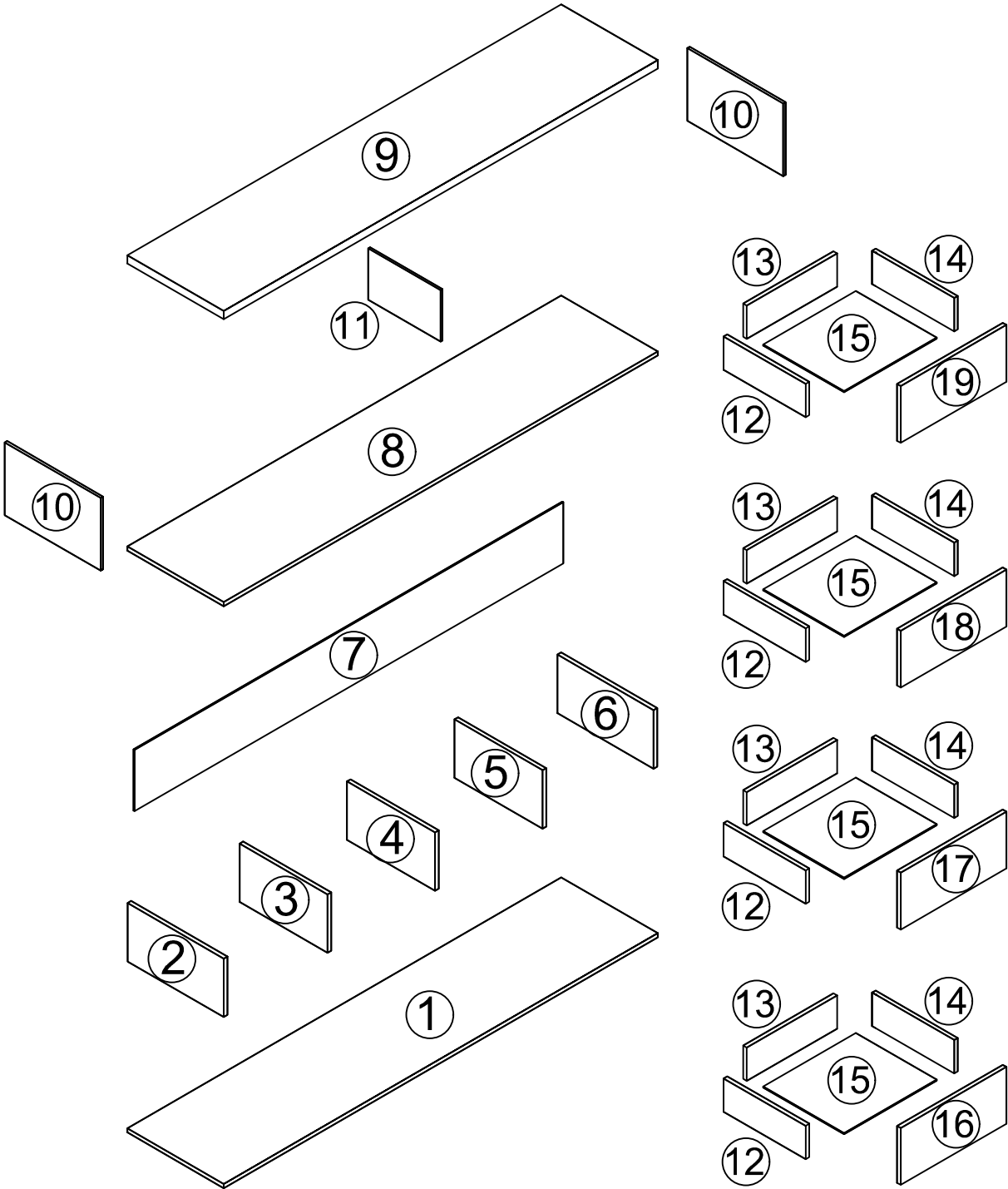
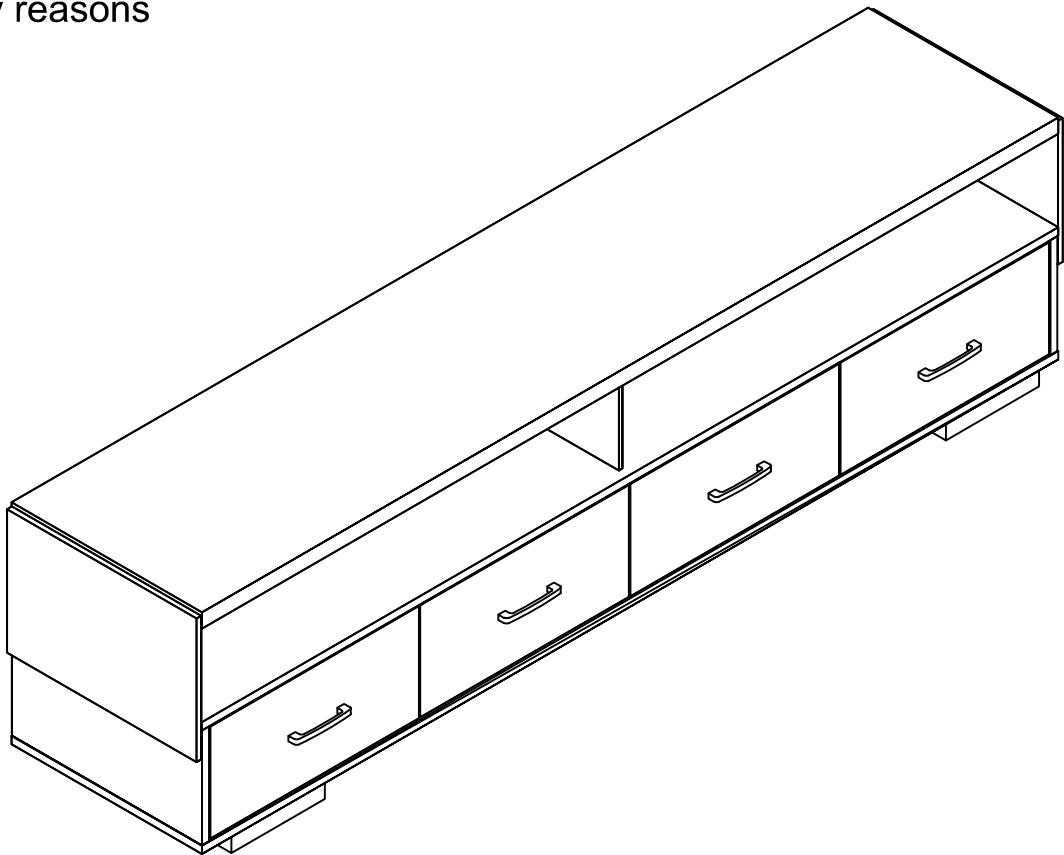


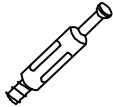
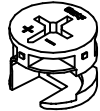
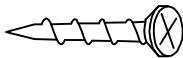
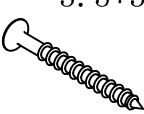

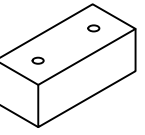
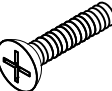
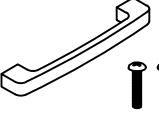
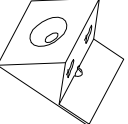
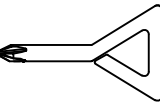
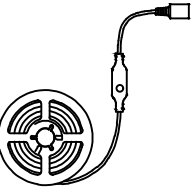
# ASSEMBLY INSTRUCTION

- It would be best if you set aside and organize all pieces & corresponding “nuts/bolts” first.
- Please follow the instructions to assemble the items correctly.
- Could be assembled by one person ,but would recommend two.
- Please ensure the safety of the glass when assembling.
- Do not make the screws too loose or too tight.
- As shown in the figure, Insert the screw into the hole.  
The arrow in the picture, Then rotate 90° or 180° clockwise.
- The remaining parts are spare parts.

## SAFETY INFORMATION

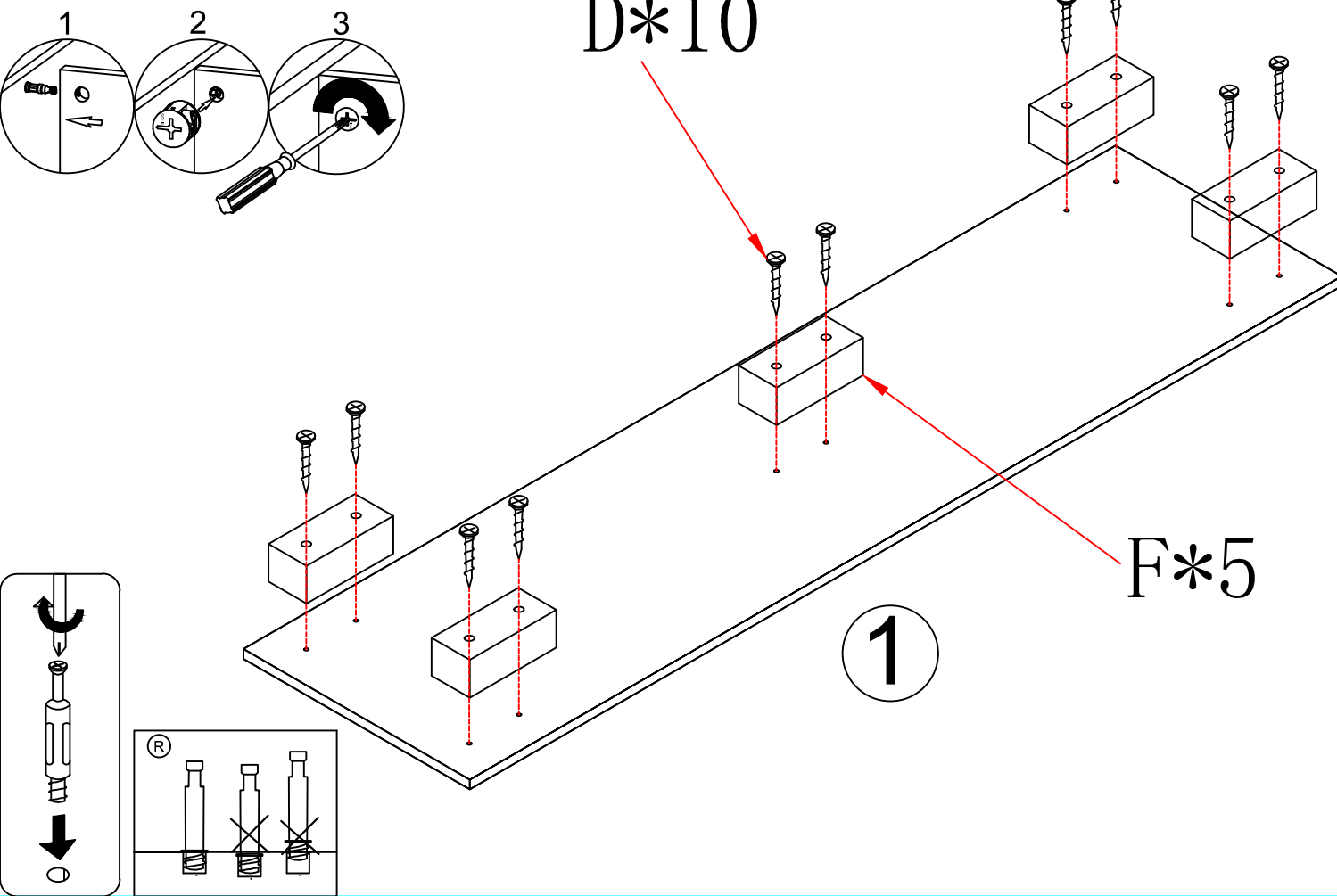
- The accessory bag contains some small accessories , which should be kept away from children.
- Kids are not allowed to climb or play with the product for safety reasons



						
A*52	B*52	C*42	D*10	E*4	F*5	G*8
						
H*4	I*10	J*1	K*1			

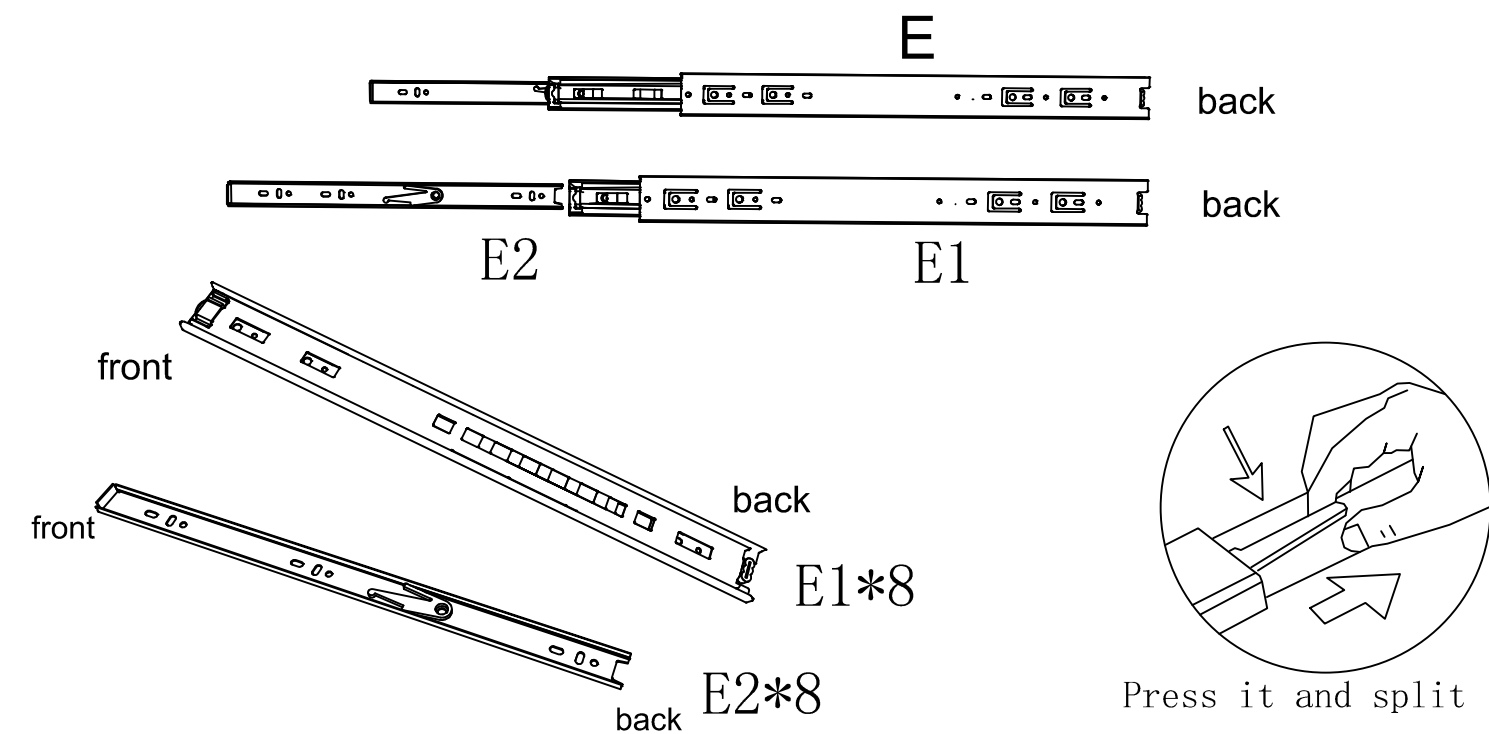


## STEP 1

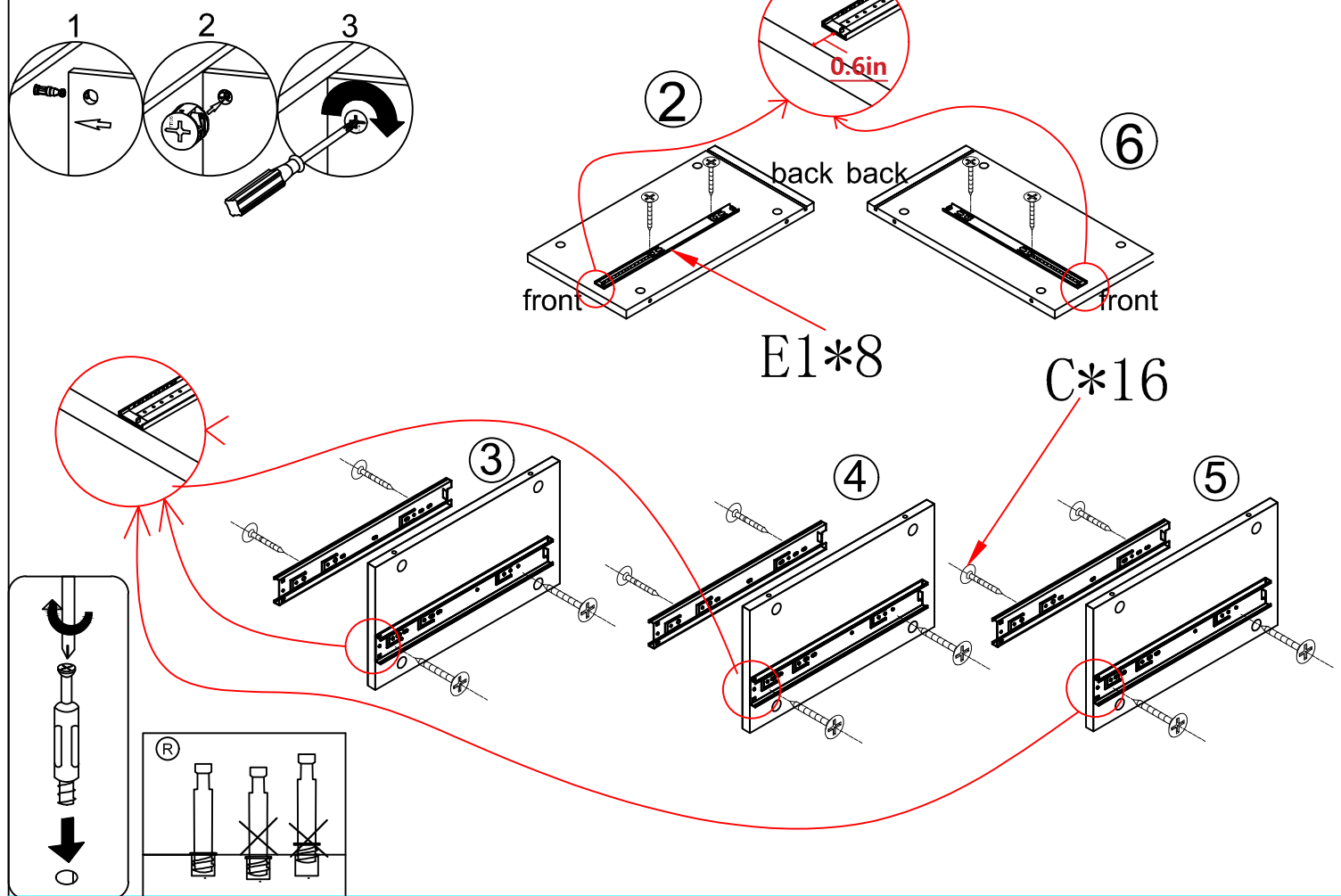


## STEP 2

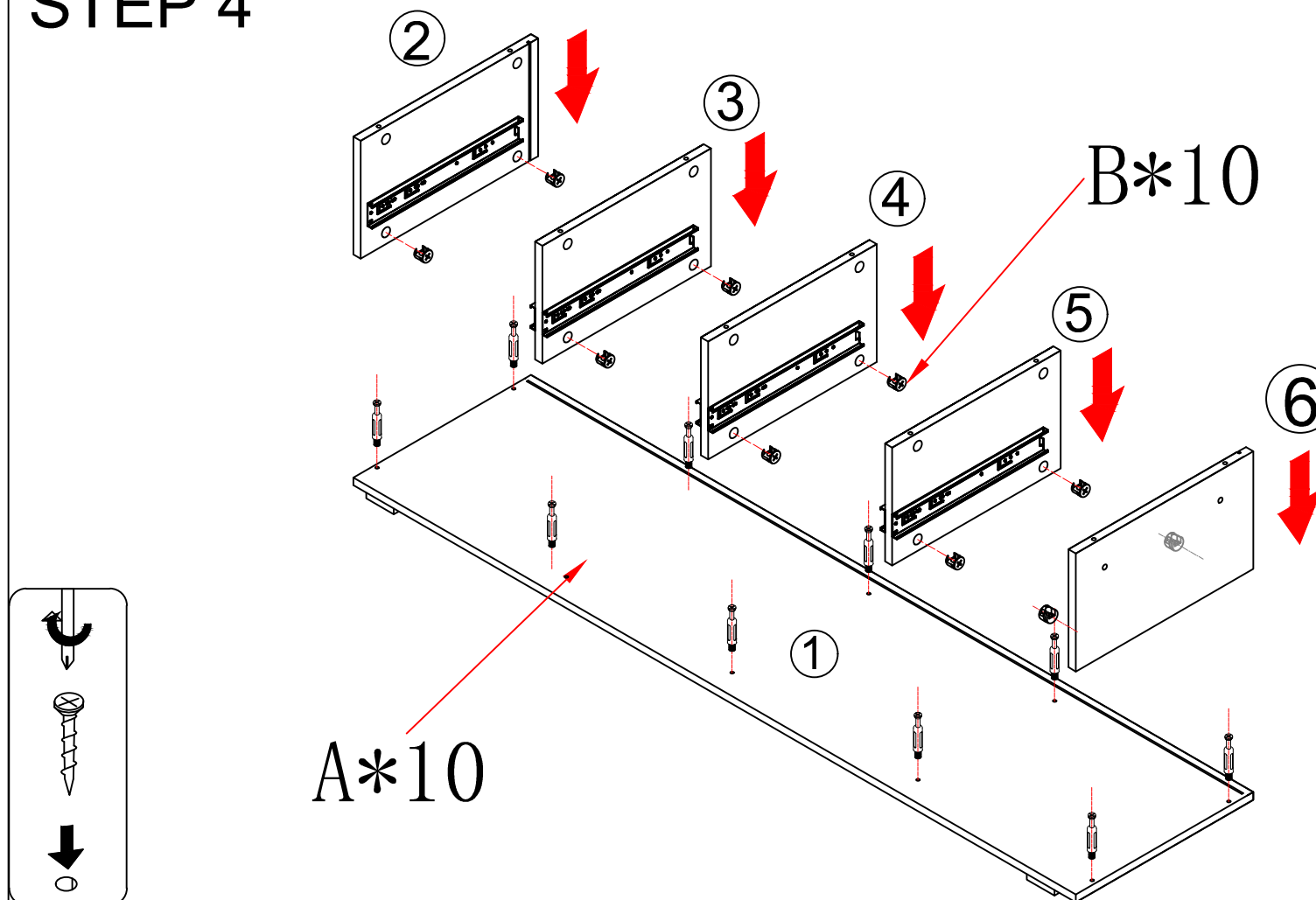
Warm Reminder:  
Before installing the drawer rail,  
you need to separate the D1 and D2 frist.



## STEP 3

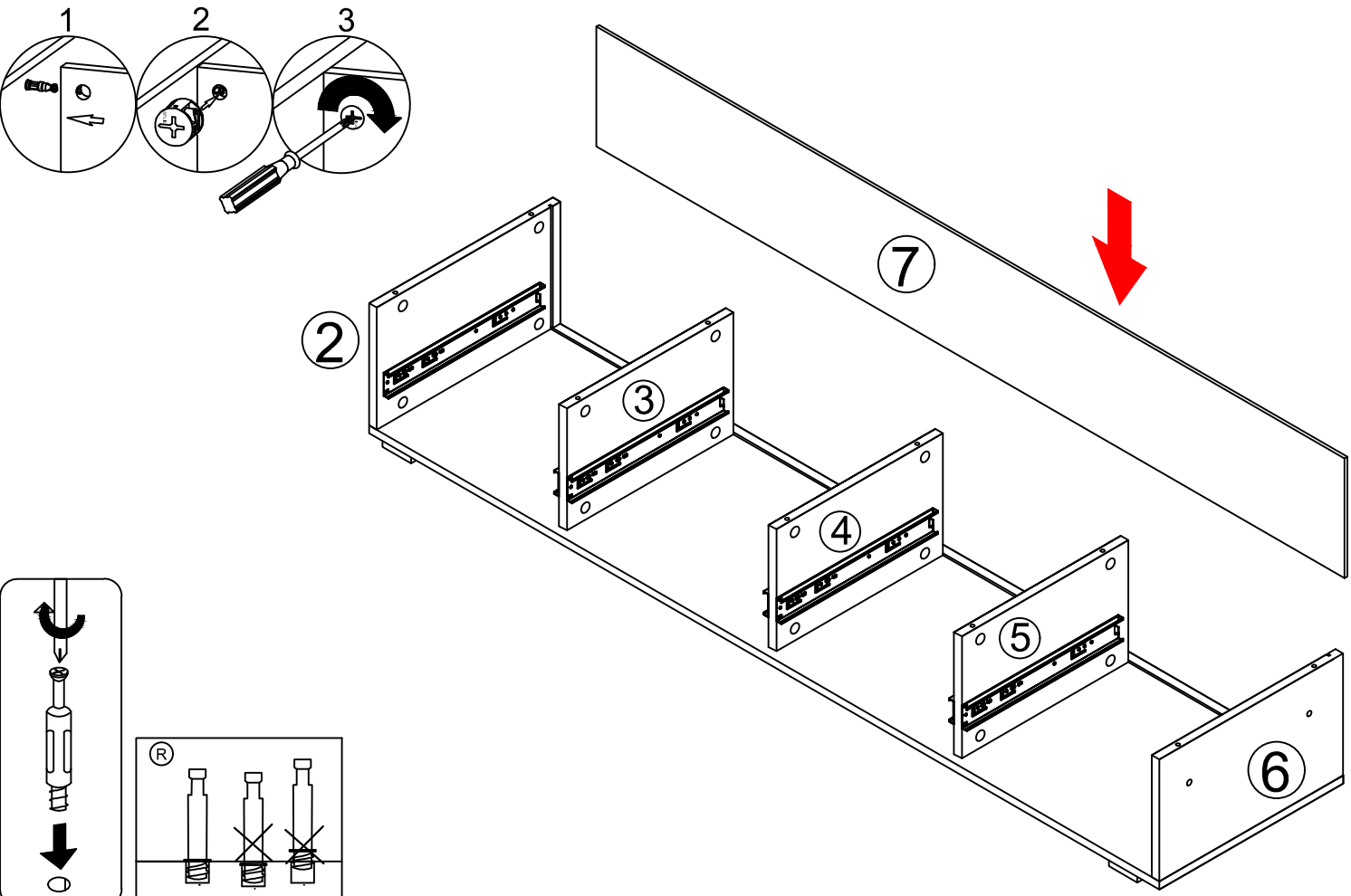


## STEP 4

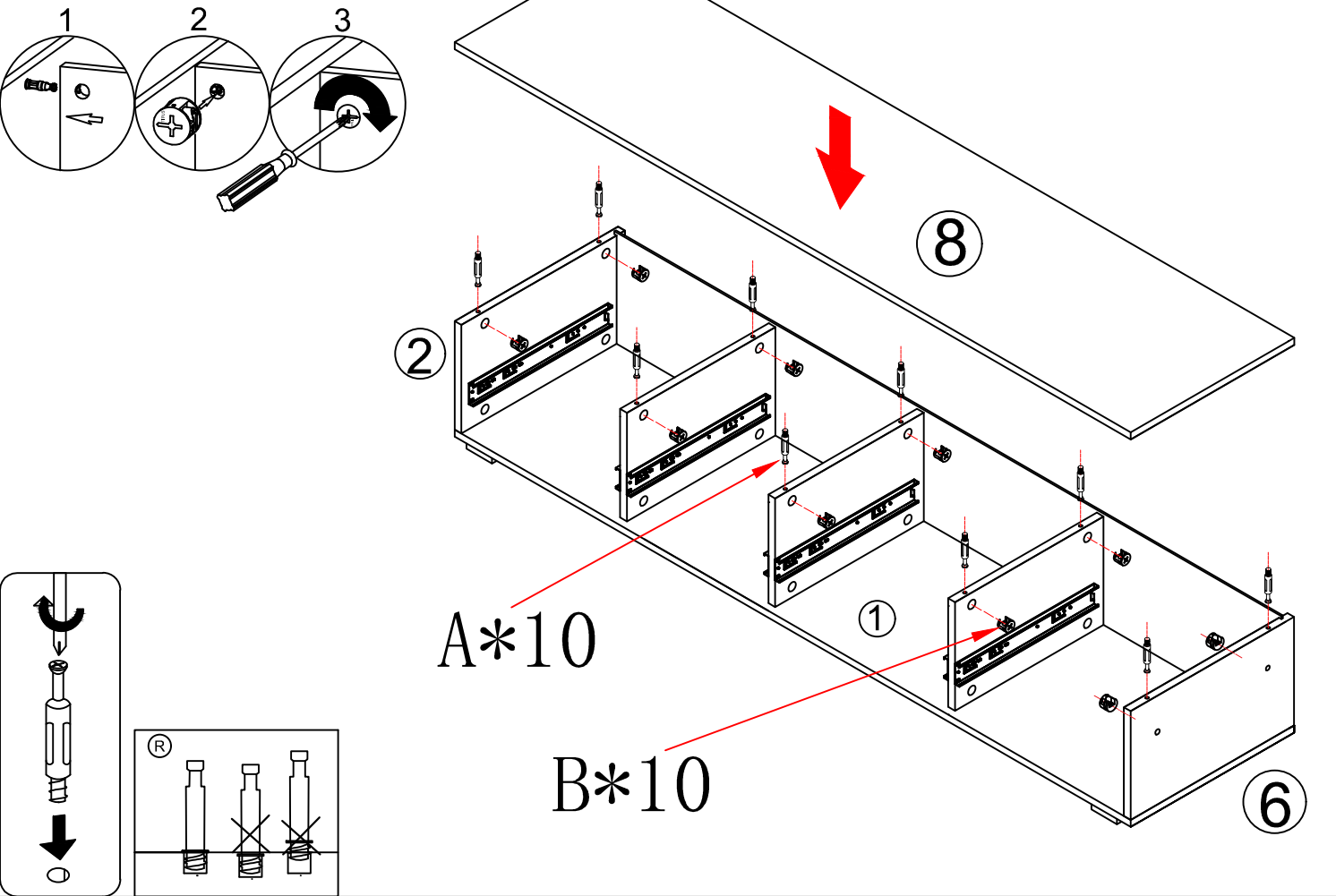




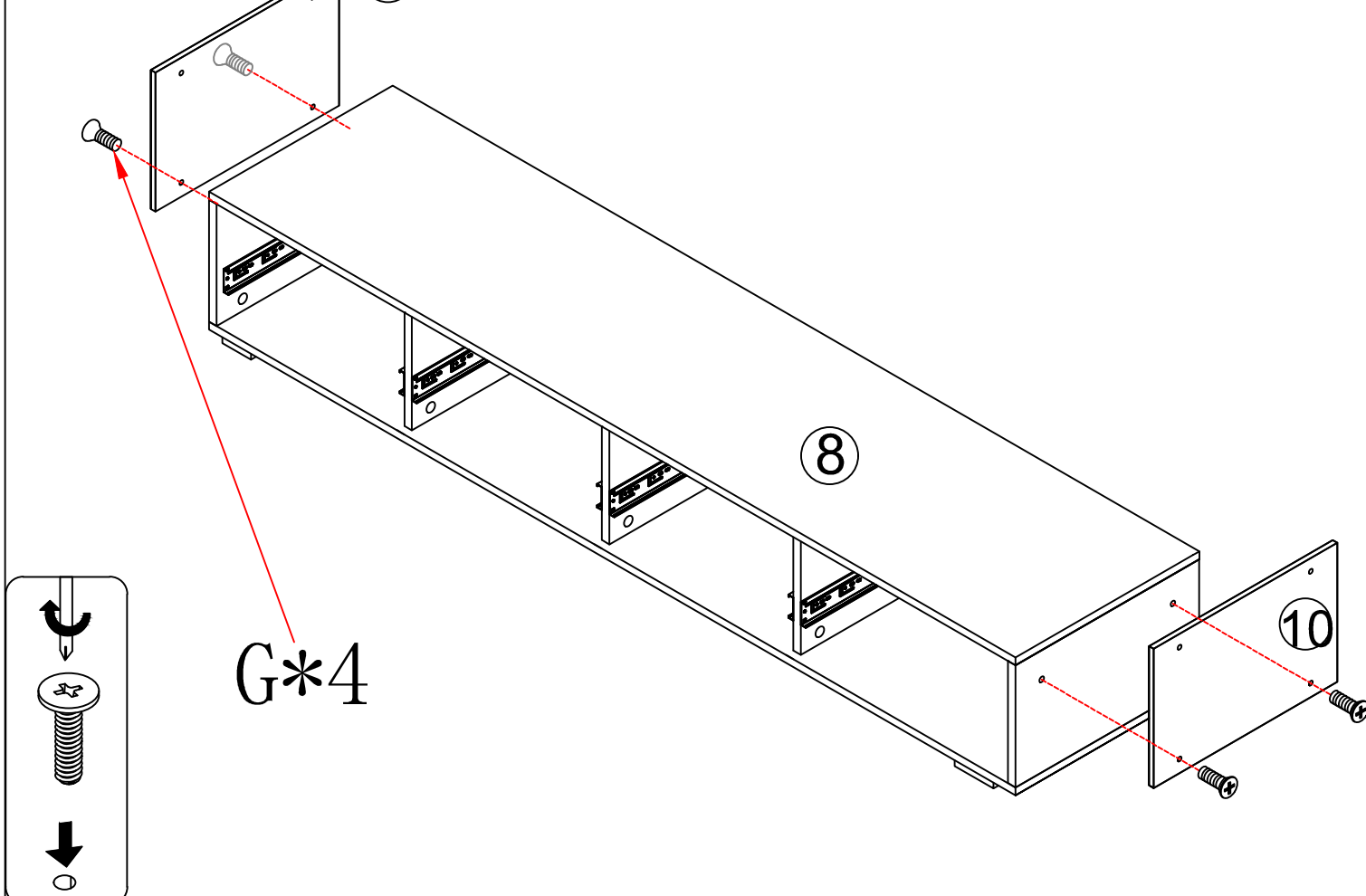
# STEP 5



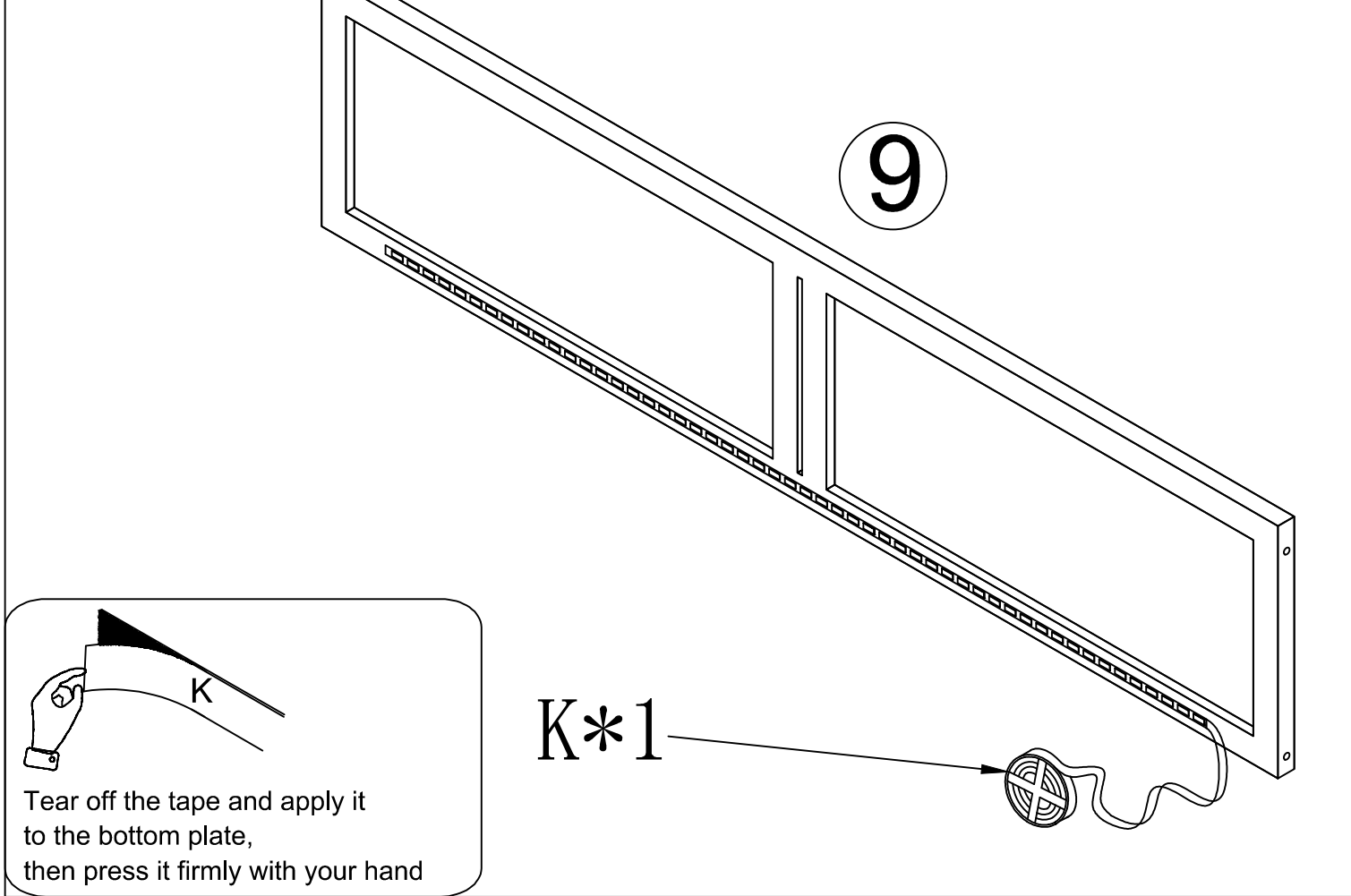
# STEP 6



# STEP 7

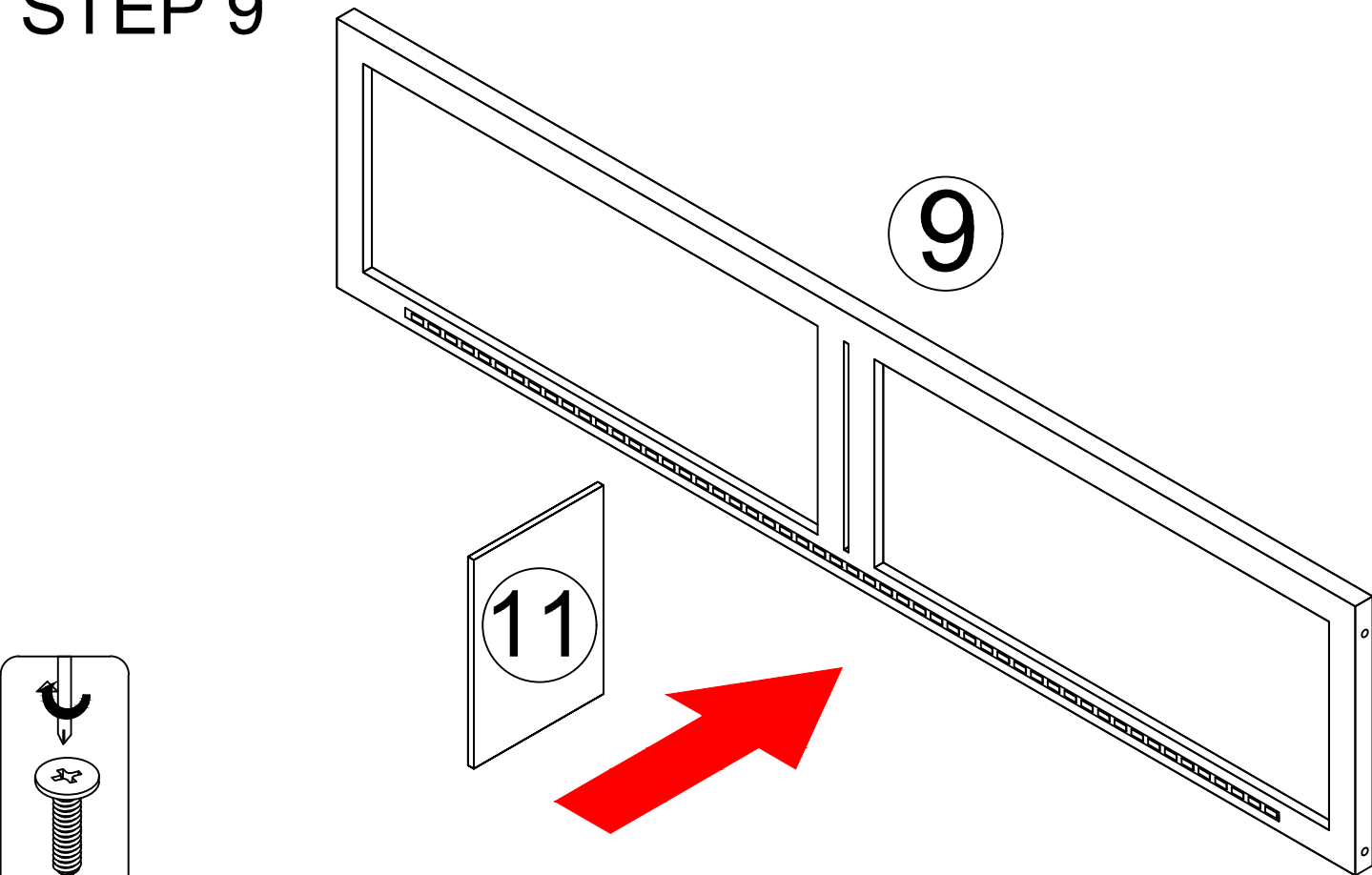


# STEP 8

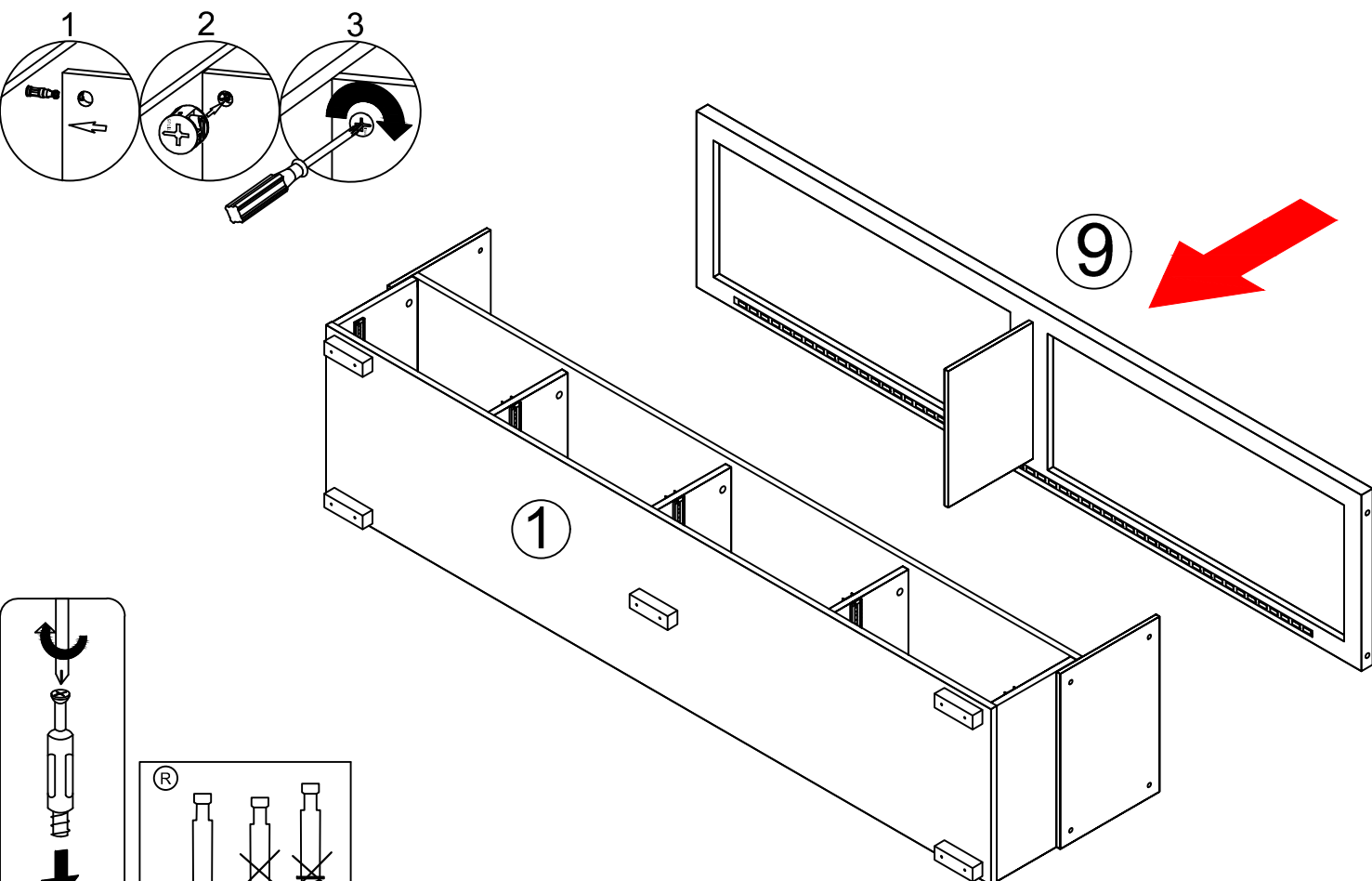




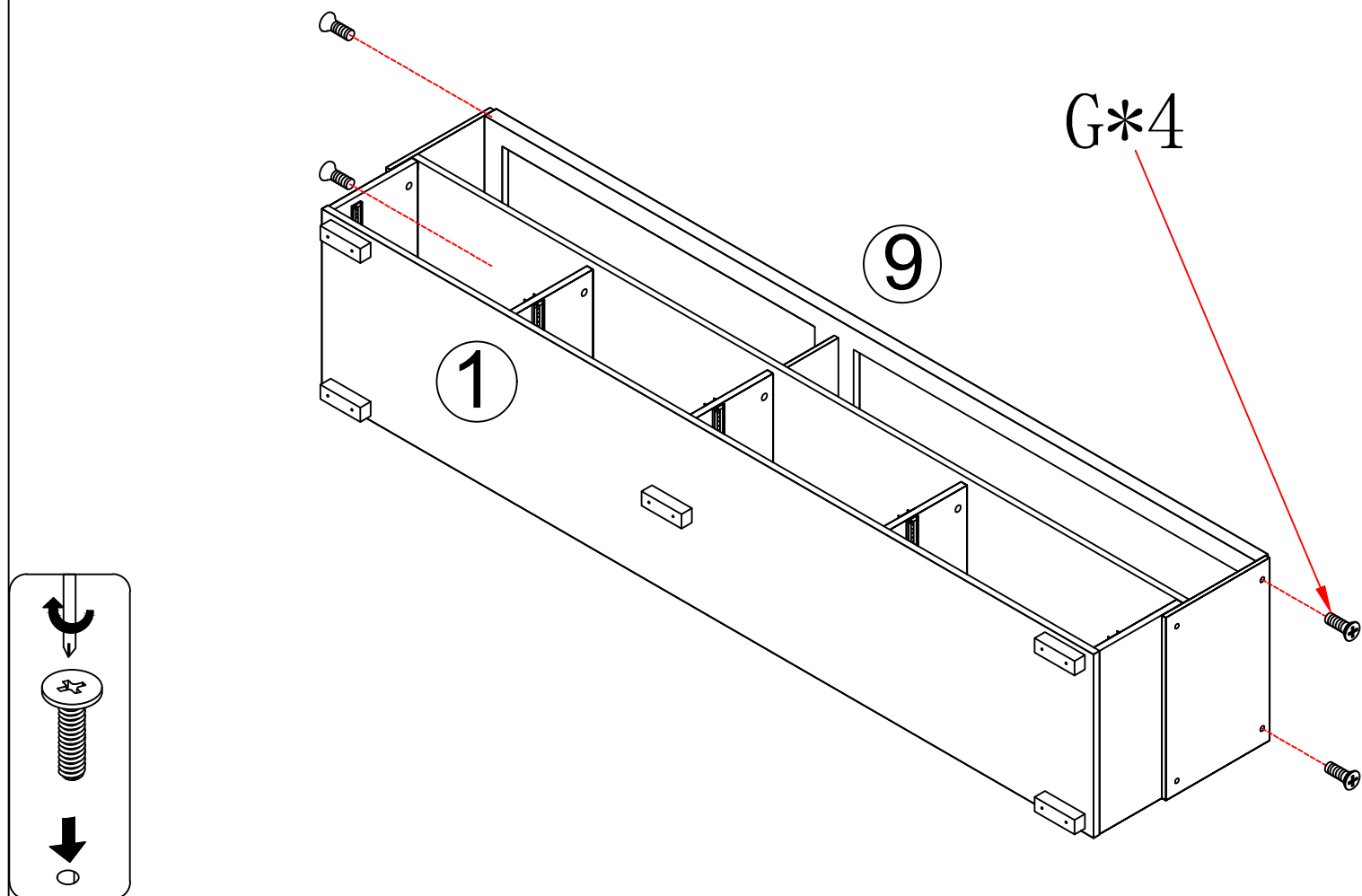
## STEP 9



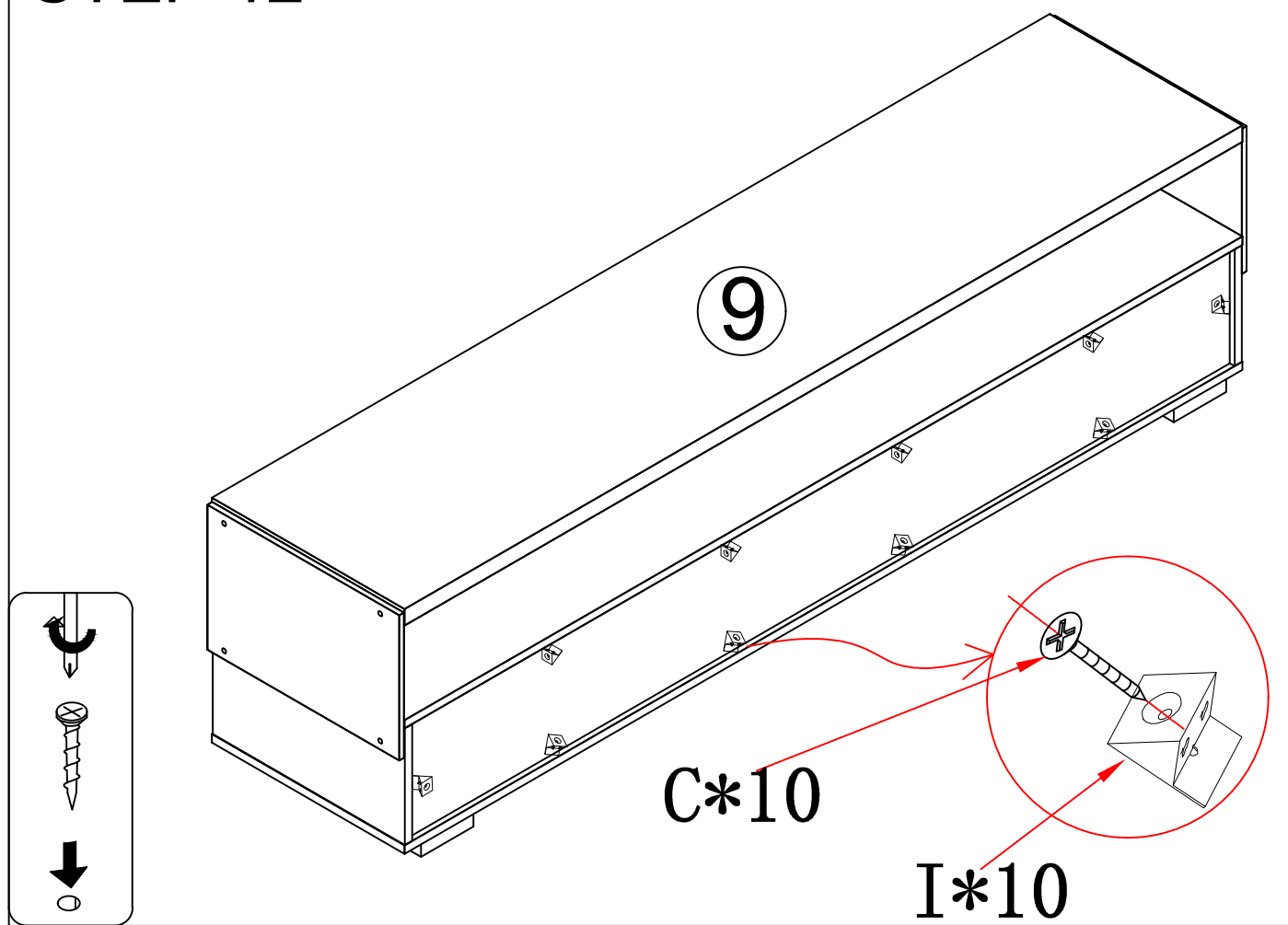
## STEP 10



## STEP 11

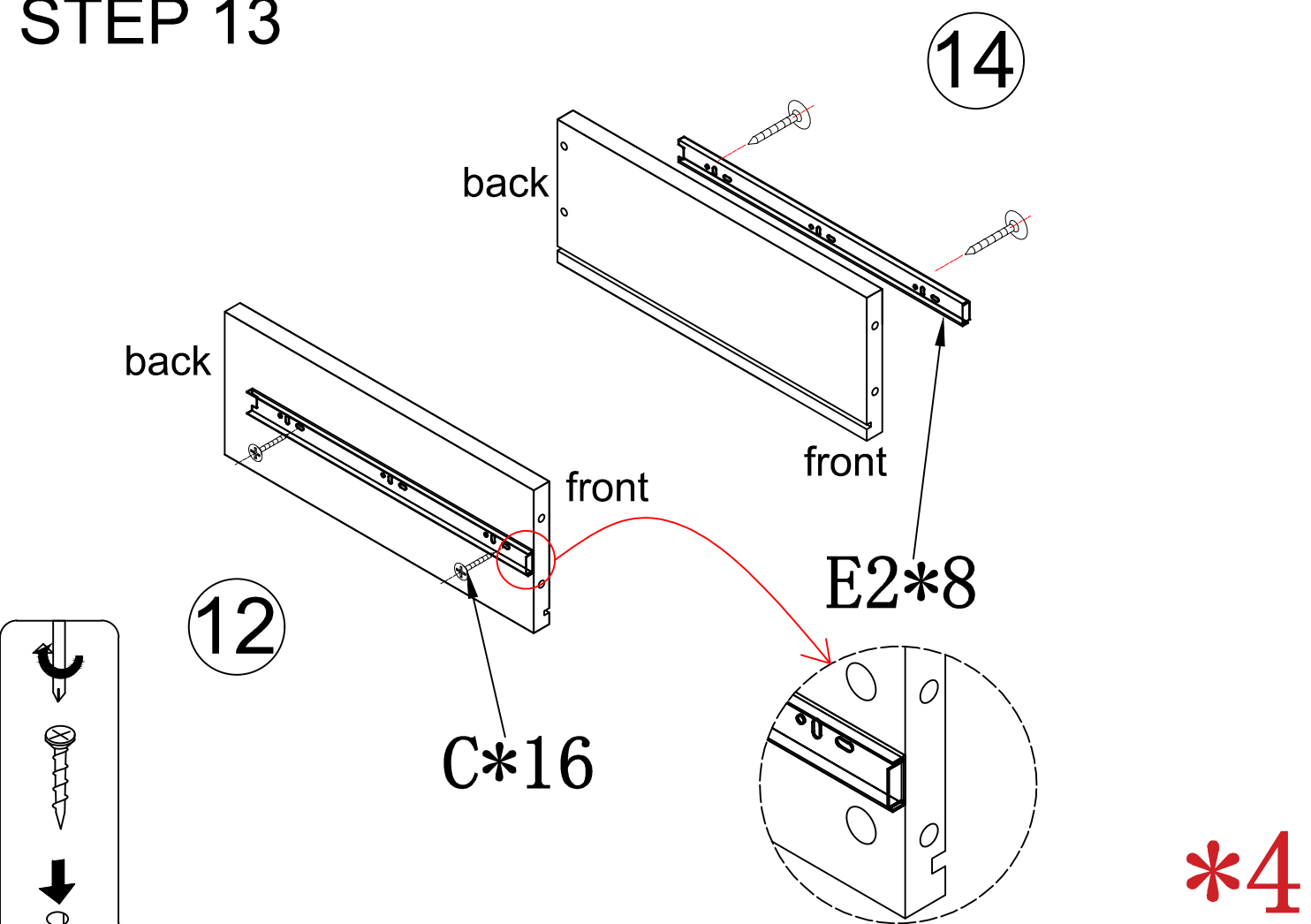


## STEP 12

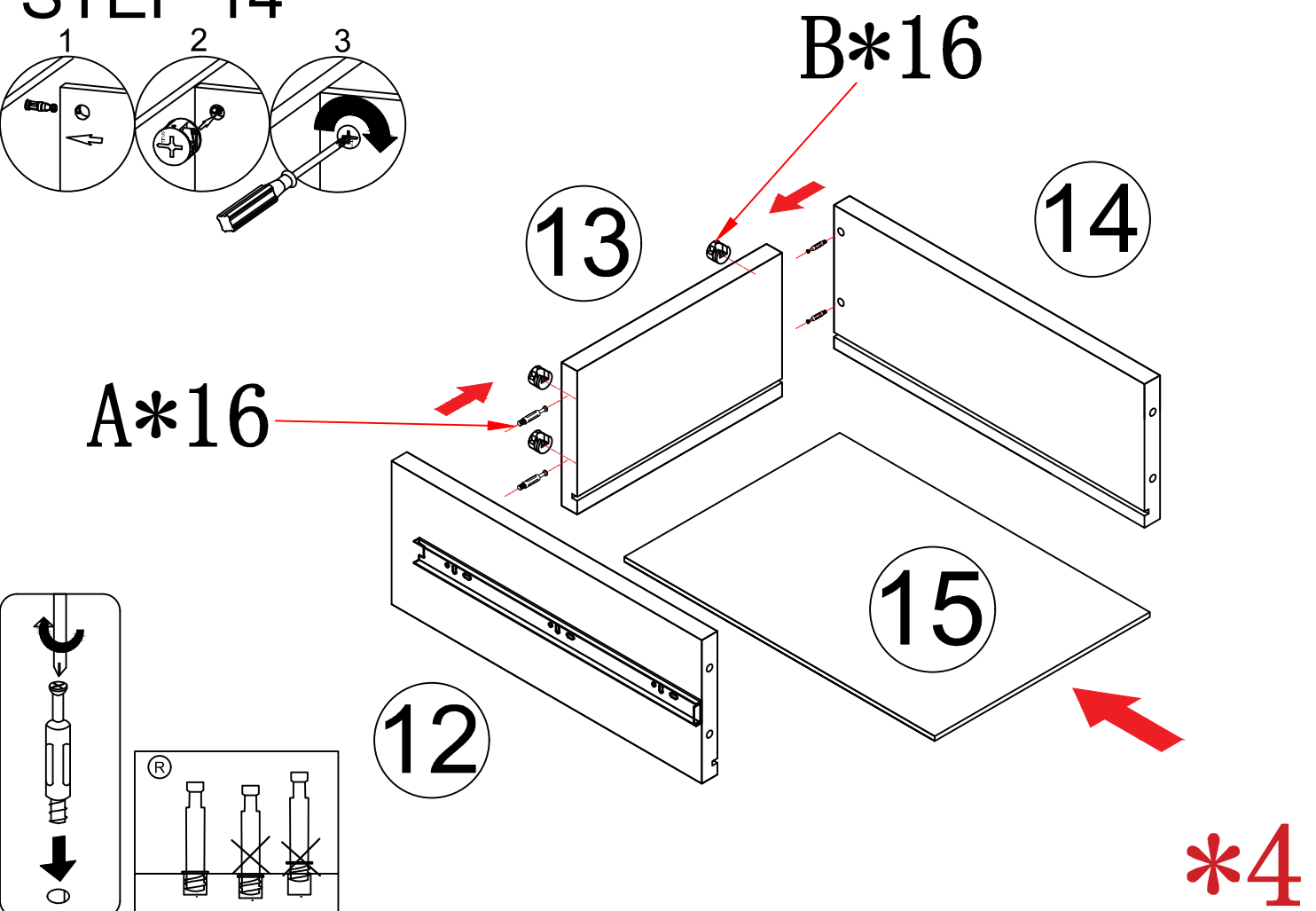




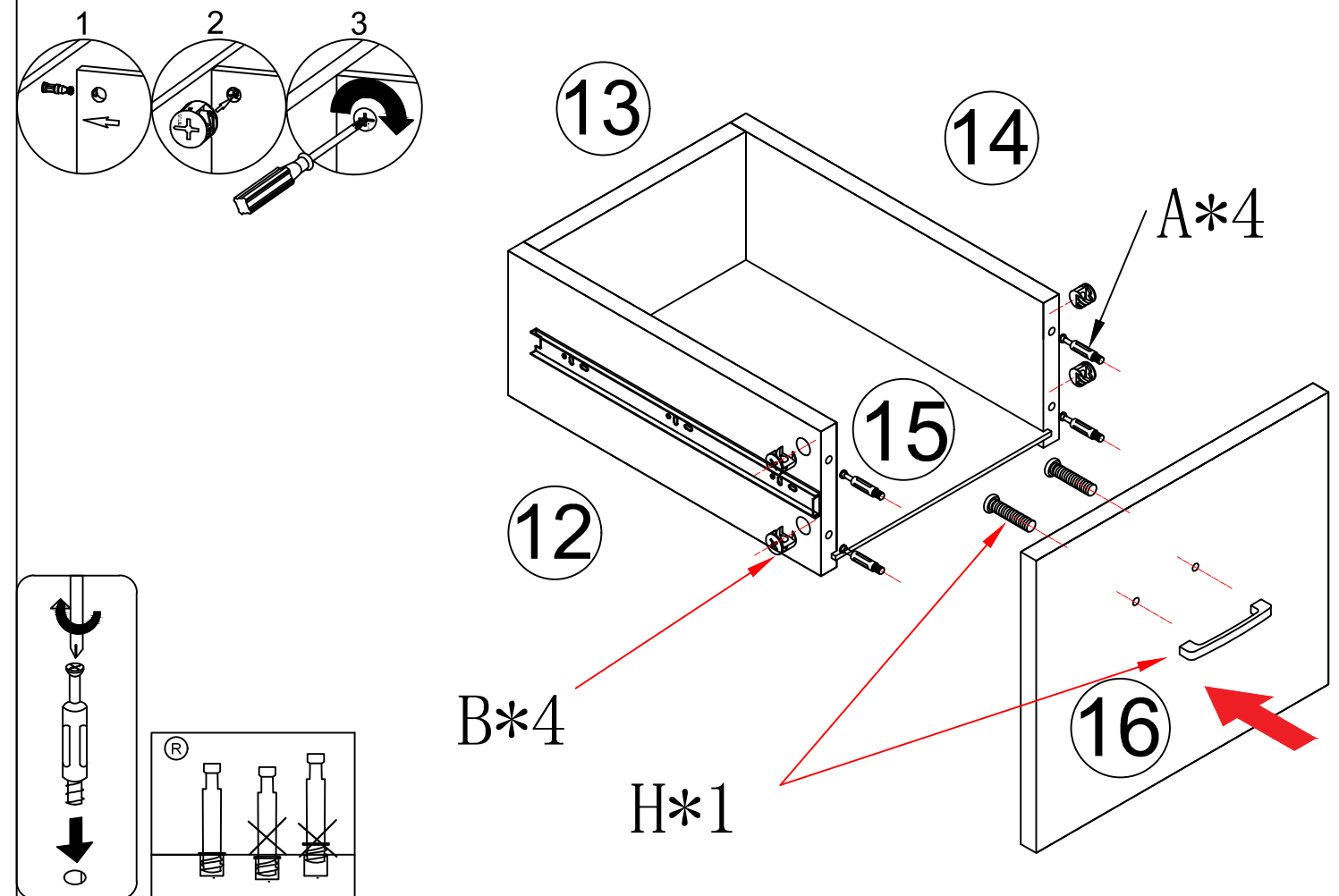
# STEP 13



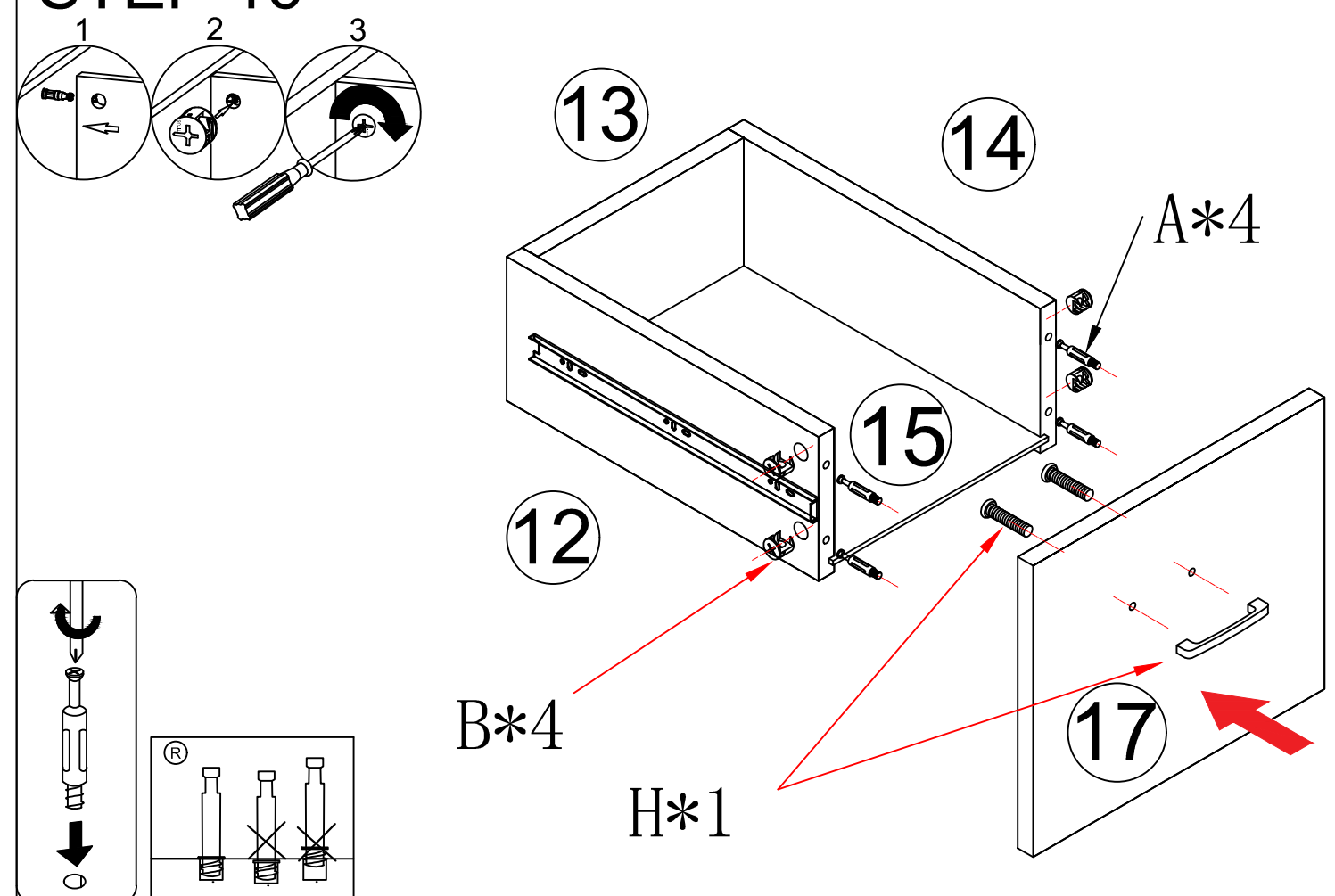
# STEP 14



# STEP 15

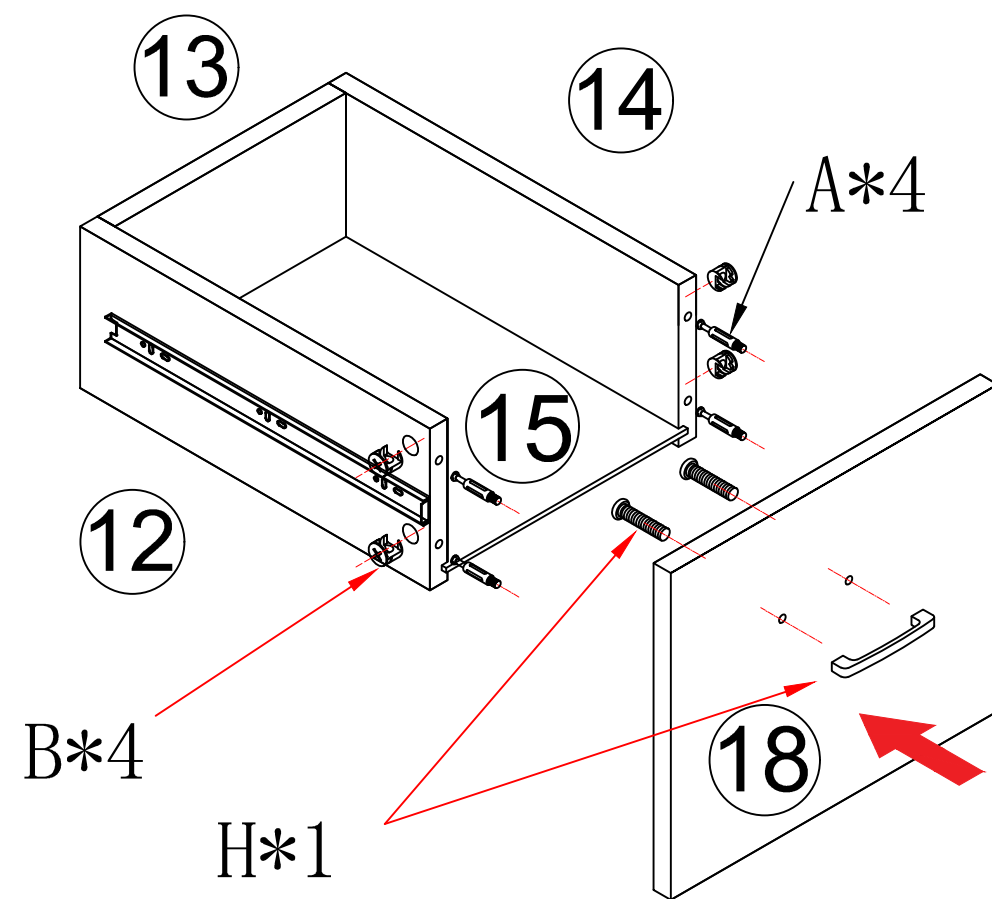
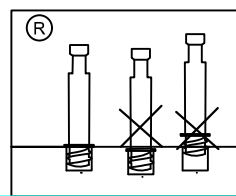
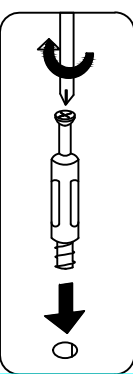
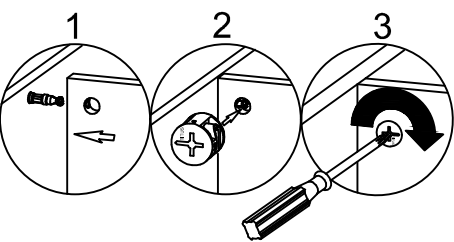


# STEP 16

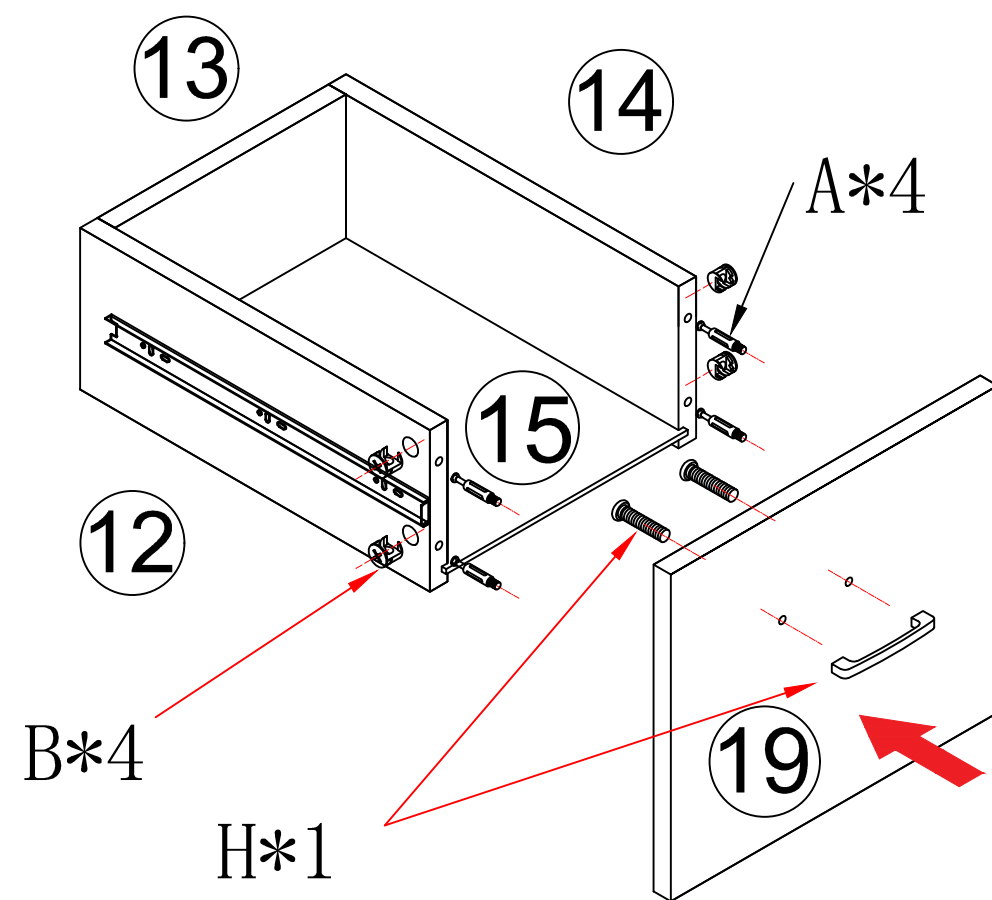
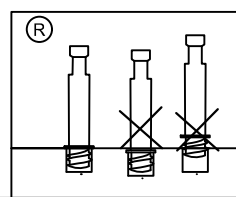
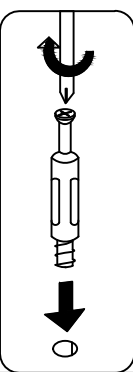
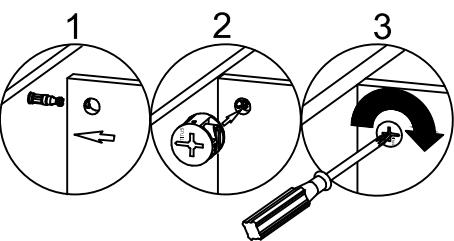




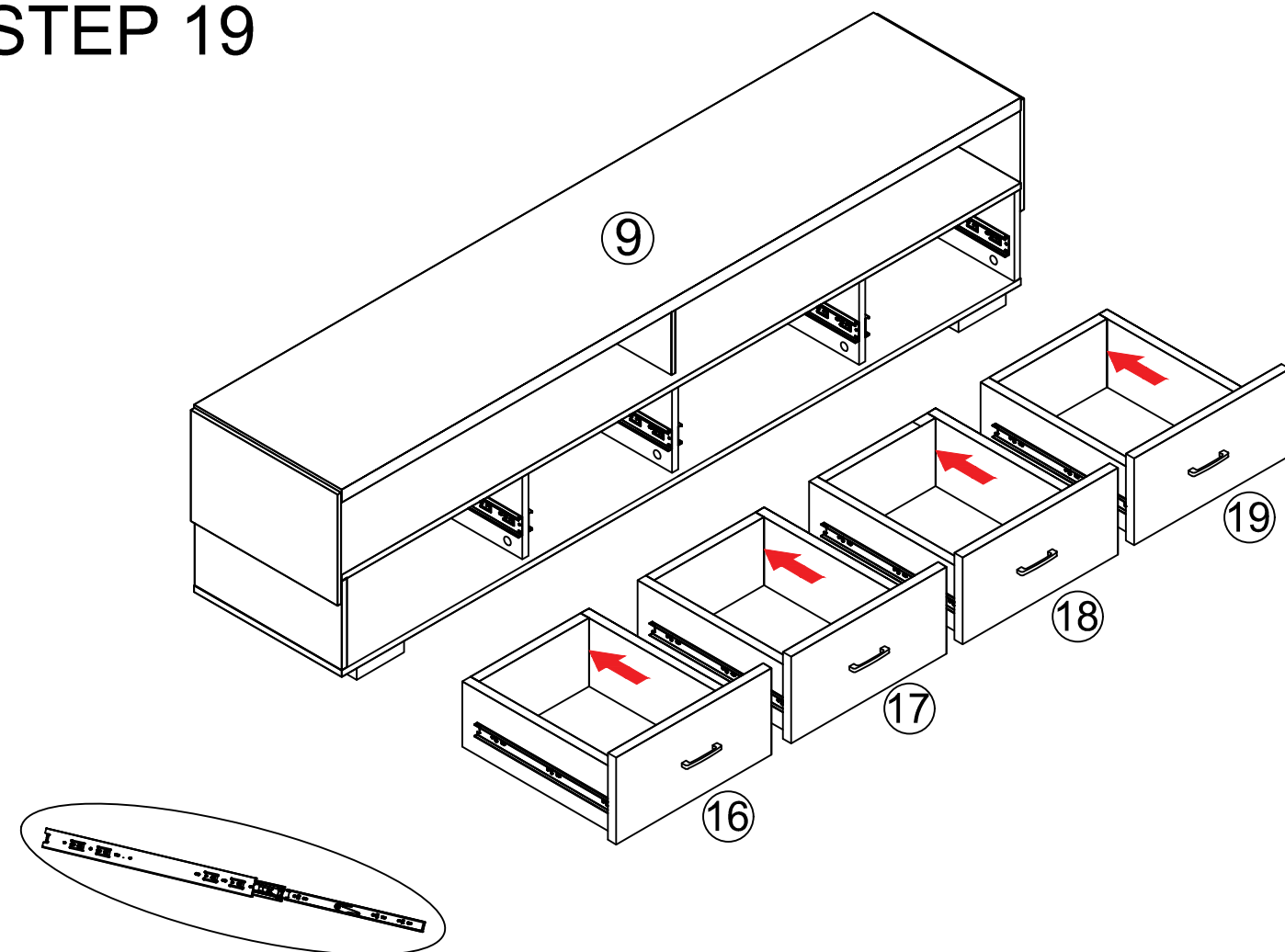
## STEP 17



## STEP 18



## STEP 19



## STEP 20

