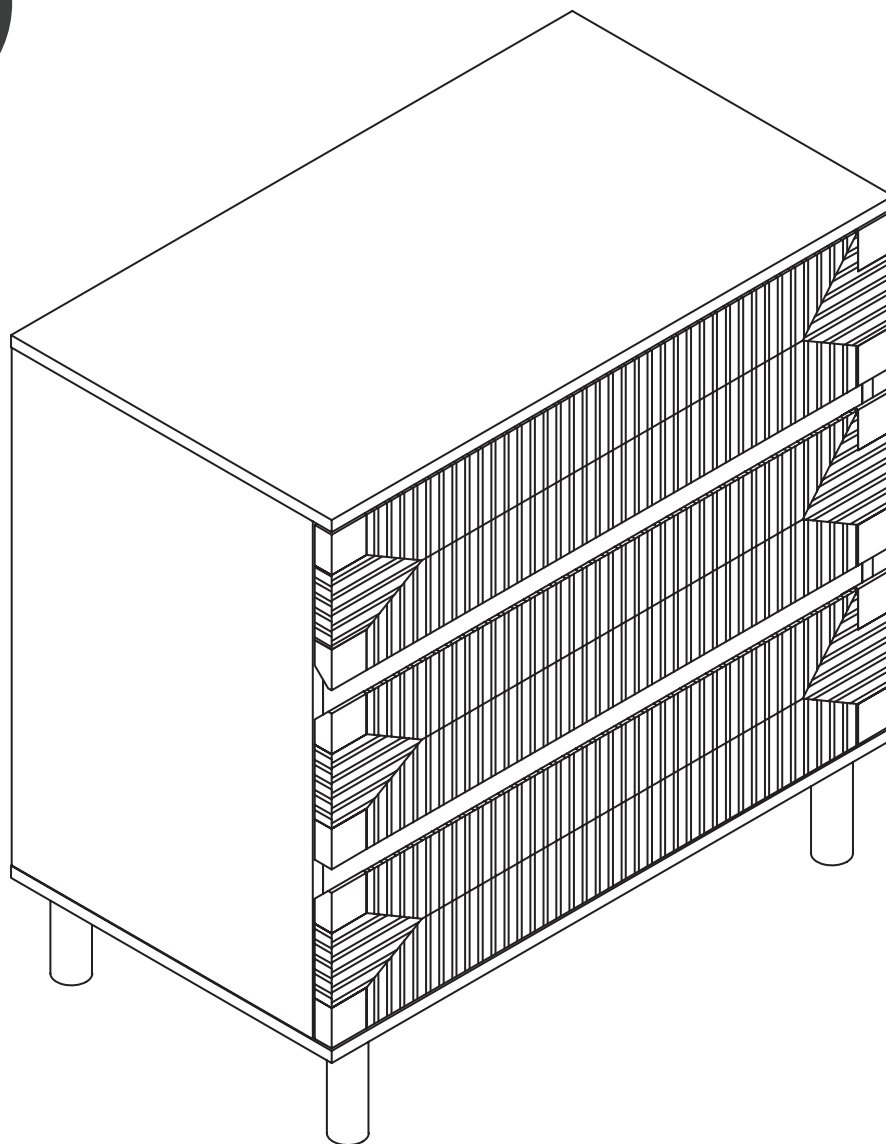


Let's build the

Beacon Dresser

SKU 71411



Scan me!

Free Lifetime
Warranty

nathan james

24-1108

Ok, let's get rolling

This should be easy, just follow our instructions and you will be back to Netflix in no time.

Estimated time for assembly



100:00

What you need

- Some of your favourite bubbly or your preferred relaxant
- Use the packaging carton as a working surface to prevent product damage during assembly
- Phillips head screwdriver

Weight Limitation



Total Max. Capacity: 120 lbs.
Top Capacity: 30 lbs.
Drawer Capacity : 30 lbs./drawer

Toll-free at 1-866-619-1004
Help@nathanjames.com
Nathanjames.com/help

What's included

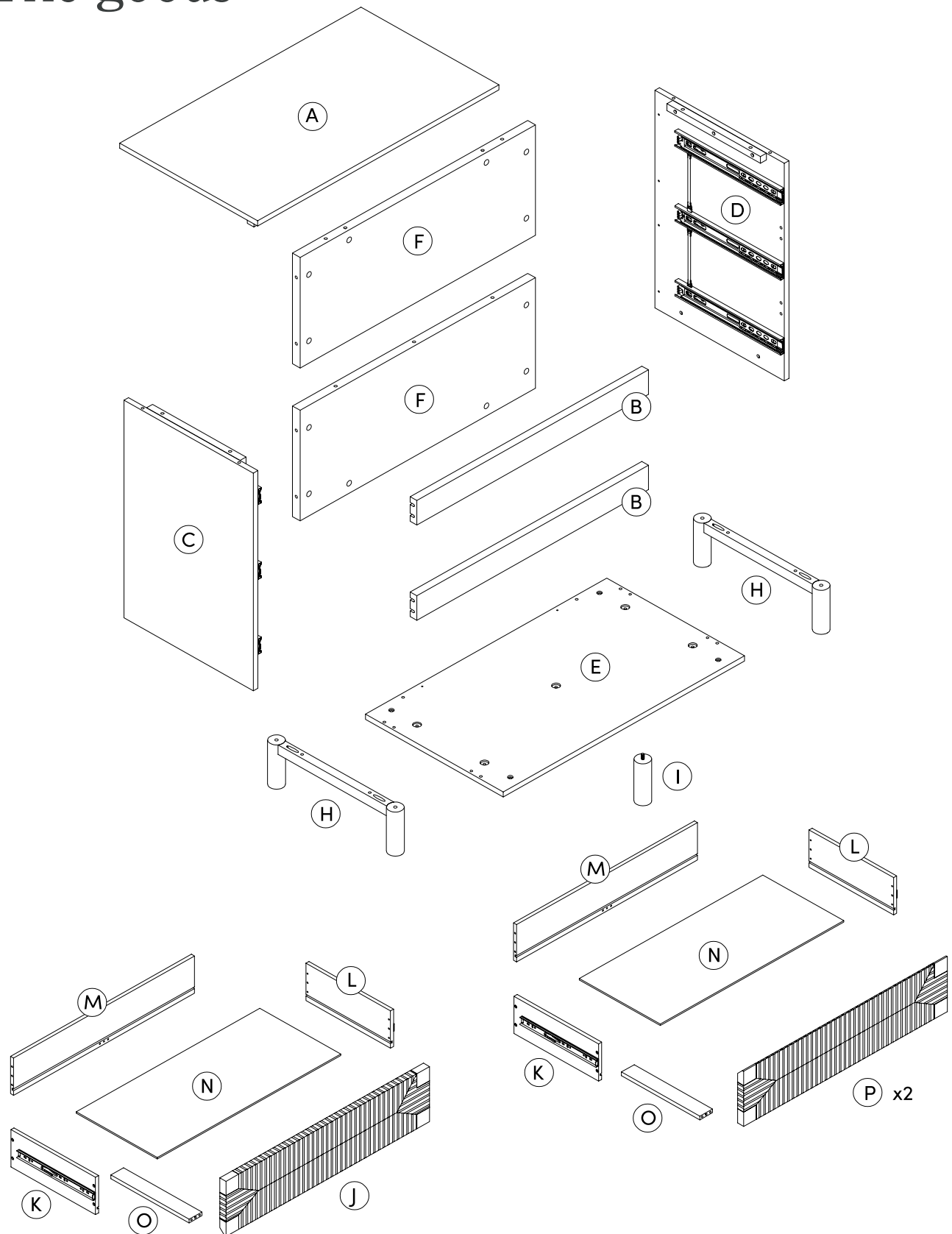
Description		Qty
A	Top Panel	1
B	Front Rail	2
C	Left Side Panel	1
D	Right Side Panel	1
E	Bottom Panel	1
F	Back Panel	2
H	Leg Frame	2
I	Middle Leg	1
J	Drawer Front Panel-Top	1
K	Drawer Left Side Panel	3
L	Drawer Right Side Panel	3
M	Drawer Back Panel	3
N	Drawer Bottom Panel	3
O	Drawer Bottom Panel Support	3
P	Drawer Front Panel-Middle & Bottom	2

Scan me!

Free Lifetime
Warranty

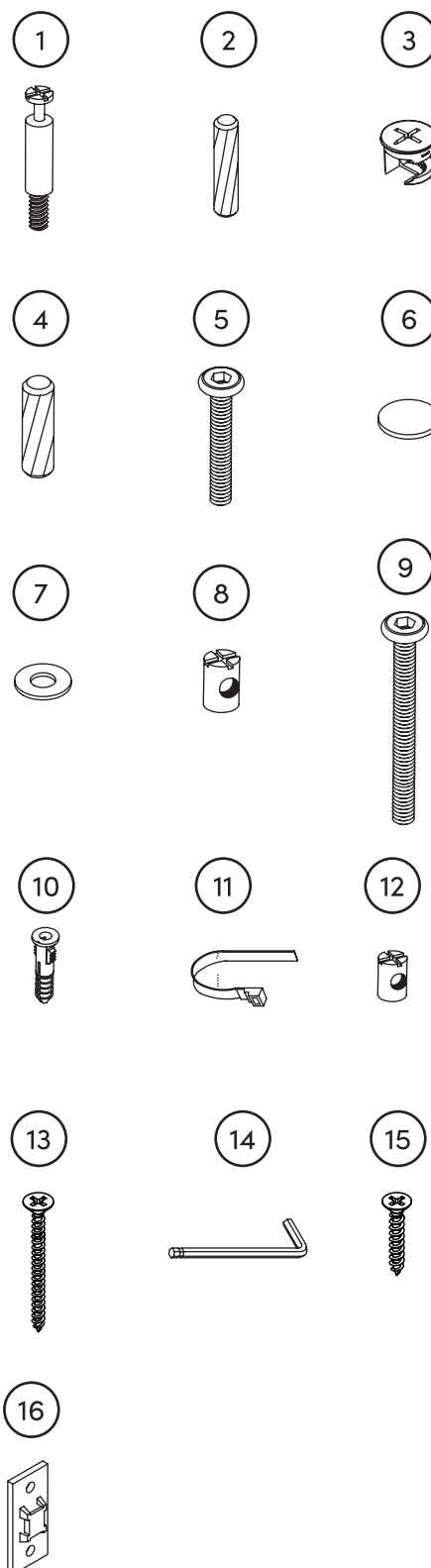


The goods



What's included

Description		Qty
1	M6*35mm Cam Bolt	23
2	M6*30mm Wooden Dowel (Extra 1pc)	19
3	15*9.5mm Cam Lock (Extra 1pc)	24
4	M8*30mm Wooden Dowel (Extra 1pc)	16
5	1/4"*32mm Bolt	12
6	Foam Pad (Extra 4)	8
7	1/4"*16mm Flat Washer	16
8	10*12mm Barrel Nut	4
9	1/4"*50mm Bolt	4
10	Wall Anchor	2
11	Plastic Tether (for Anti-Tip)	1
12	10*10mm Barrel Nut (Extra 2pcs)	26
13	M4*35mm Screw	32
14	Allen Key	1
15	M4*14mm Screw	2
16	Plastic Bracket (for Anti-Tip)	2



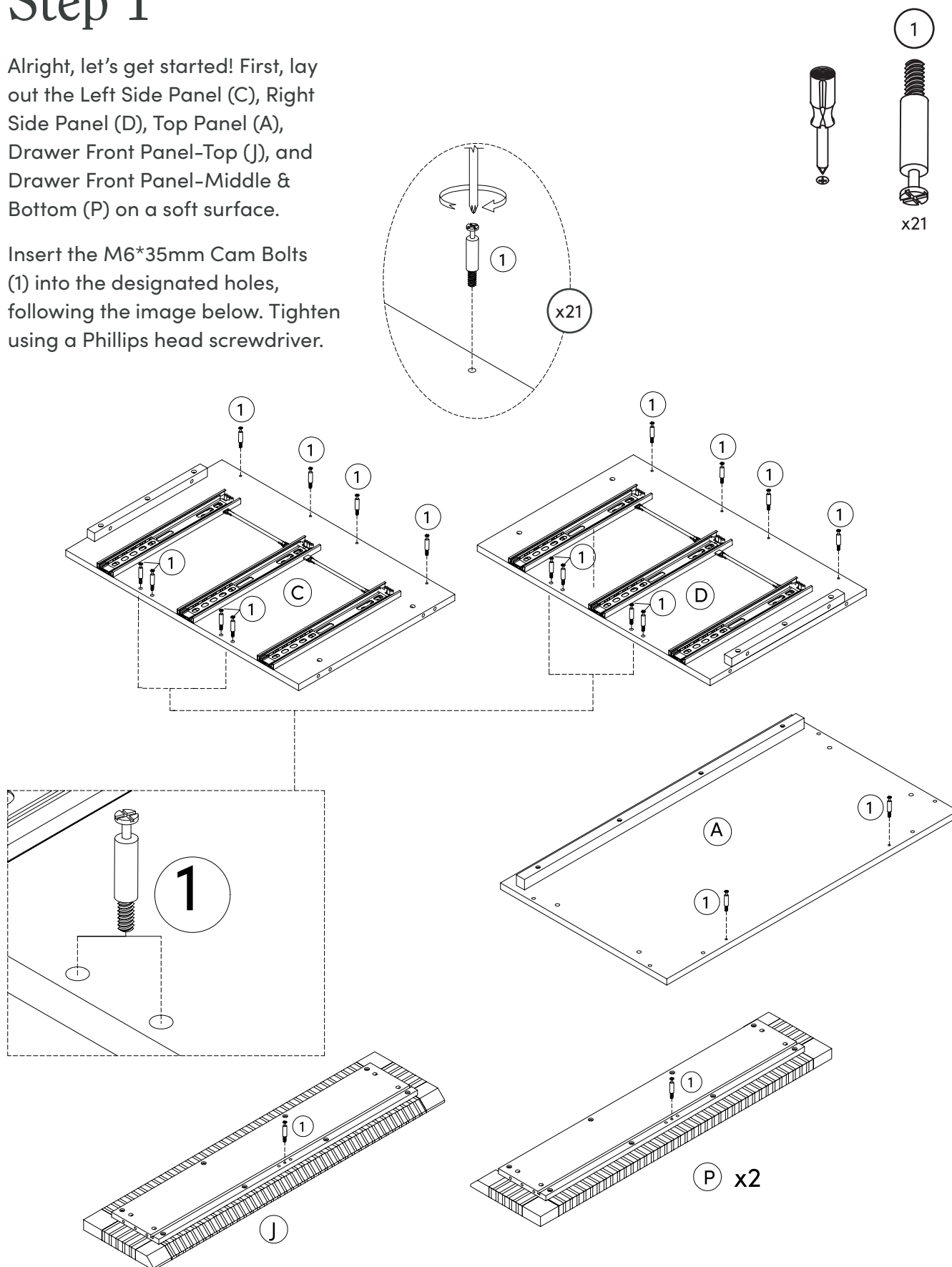
IMPORTANT

1. Do not tighten bolts / screws completely until all bolts / screws are lined up and inserted into holes.
2. Do not over tighten screws and bolts to avoid stripping.

Step 1

Alright, let's get started! First, lay out the Left Side Panel (C), Right Side Panel (D), Top Panel (A), Drawer Front Panel-Top (J), and Drawer Front Panel-Middle & Bottom (P) on a soft surface.

Insert the M6*35mm Cam Bolts (1) into the designated holes, following the image below. Tighten using a Phillips head screwdriver.



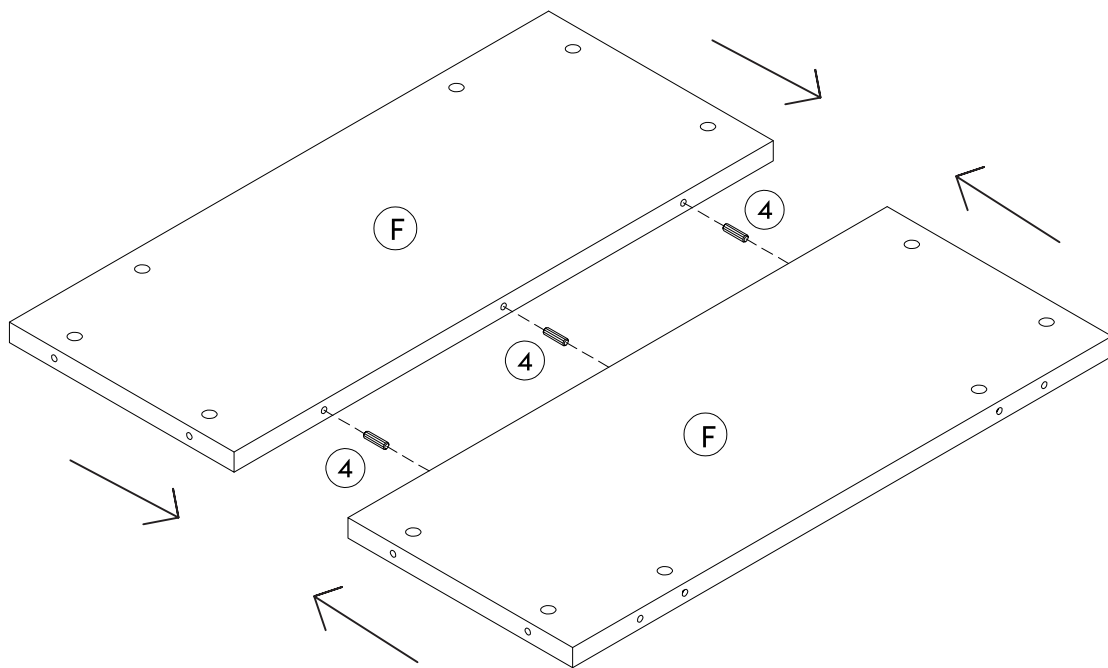
Step 2

Next, push the Back Panels (F) together as shown.
Use Wooden Dowels (4) to secure.

4

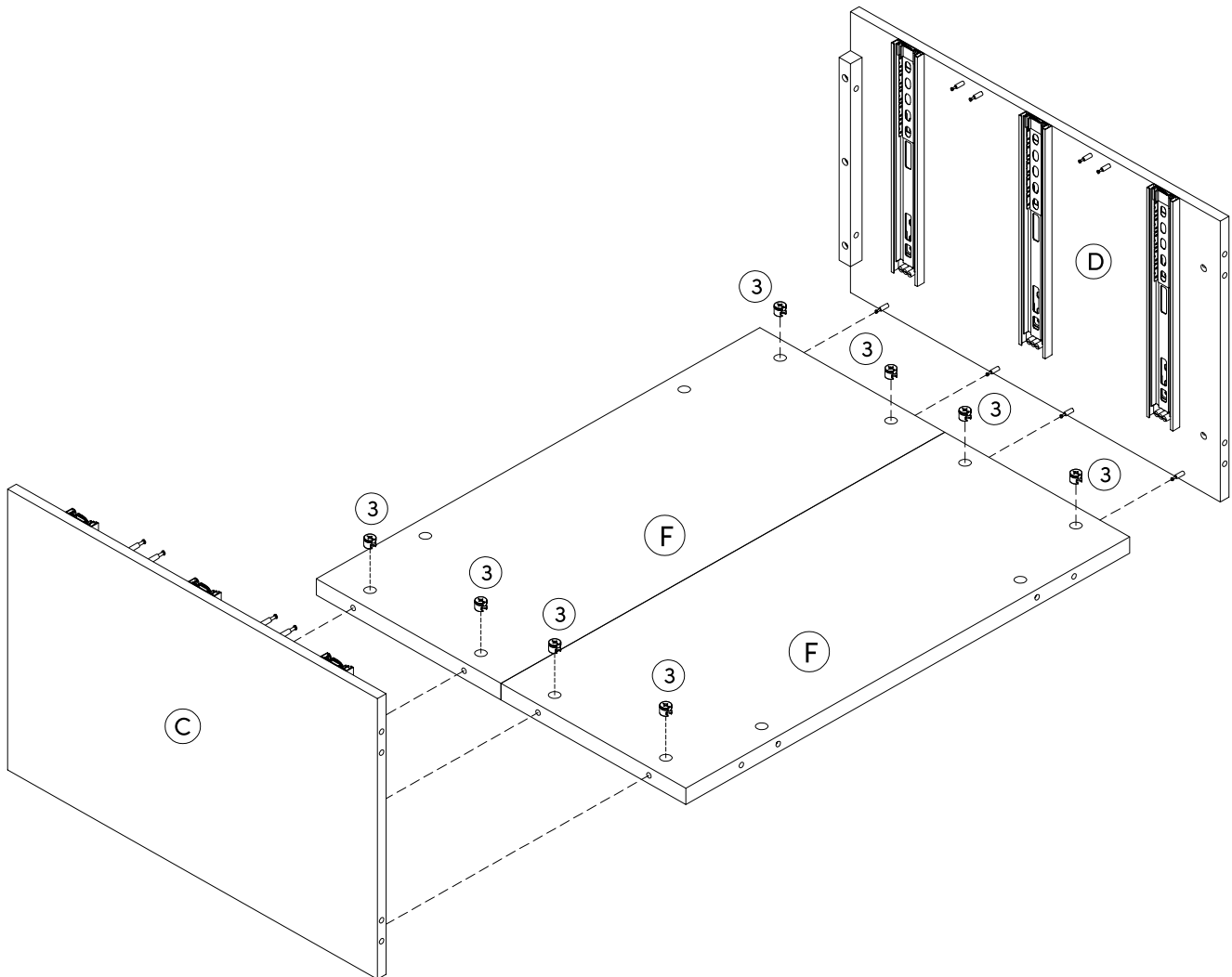
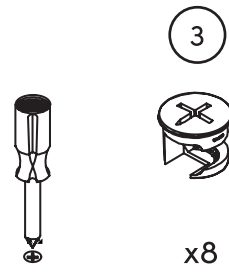


x3



Step 3

Cam Lock time! Push the Left Side Panel (C) and Right Side Panel (D) into the sides of the pieces you assembled in Step 2. Secure in place using the Cam Locks (3). See the next page for instructions on using Cam Locks.



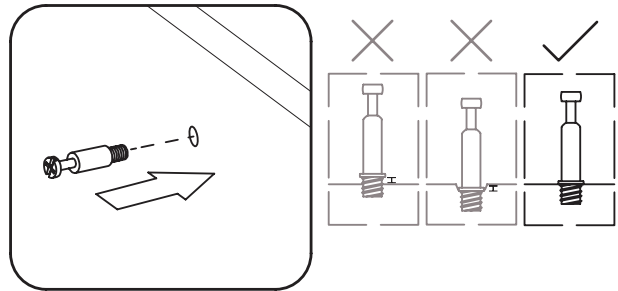
How to use cam locks

Did you know?

Cam locks are used to join two panels together, usually the edge of one to the flat side of another.

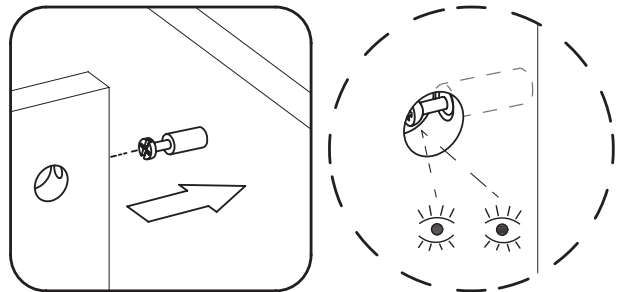
First, your cam bolt (or cam pin) will need to be properly inserted into the flat side of the board.

Important Note: Only tighten the cam bolt until it is secure. Do not over-tighten.



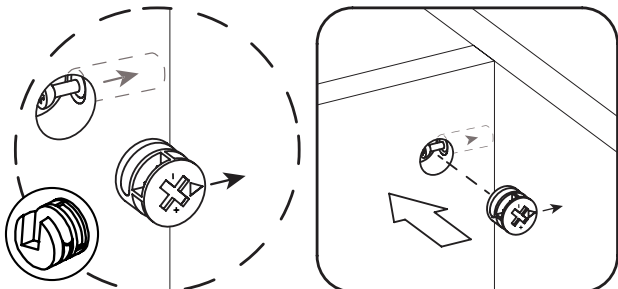
Next, you will fit the proper hole on the edge of the associated joining panel over the cam bolt.

Important Note: When installed properly, the head of the cam bolt will be visible through the larger hole on the side of the joining panel.



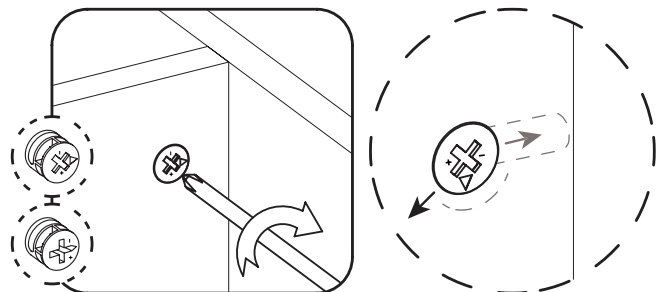
Next, you will notice the cam lock has a “C” shaped back. Commonly, an arrow on the front of the cam lock points in the same direction as the open section on back.

Using these as your cue, insert the cam lock into the large hole so the opening of the “C” fits over the head of the cam bolt.



Using a screwdriver, you will turn the cam lock until it stops, usually between 130° or 180°. You will feel the panels pulling closer until they are secured.

Important Note: Only turn the cam lock until the panels are fully engaged & feel secure. Turning too far may lead to hardware failure.



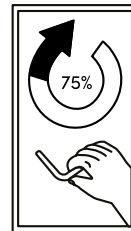
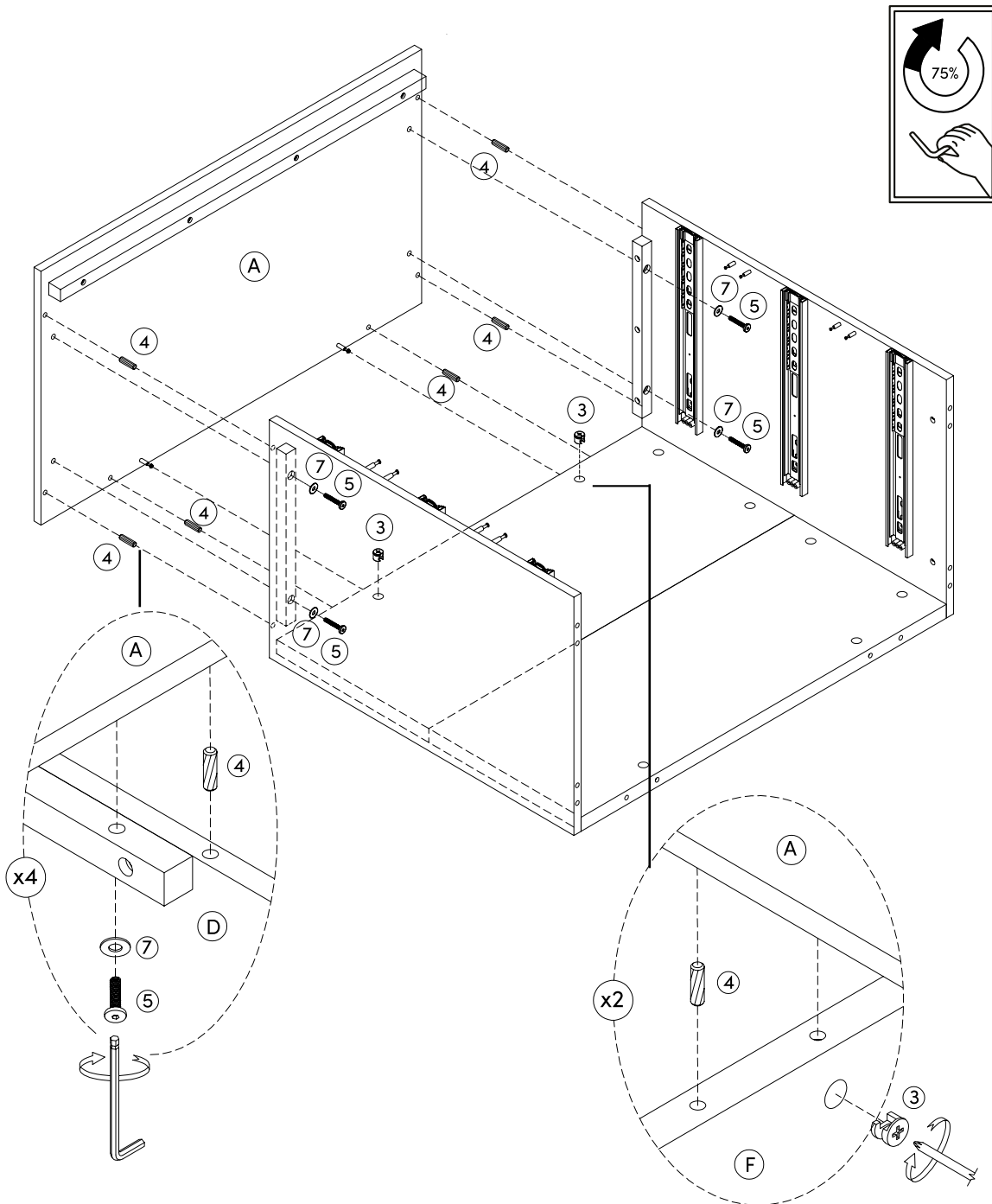
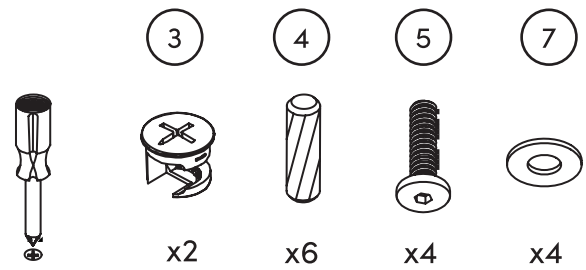
Still having issues?

If a cam lock seems to be spinning in place or is not “catching” or pulling the panels together as expected, first remove the cam lock & try again while making sure that everything is properly positioned & oriented.

If you are still having issues getting things working as expected, first remove the cam lock then unscrew the cam bolt slightly (less than 1 complete turn) to see if that helps with the alignment of the cam lock & bolt.

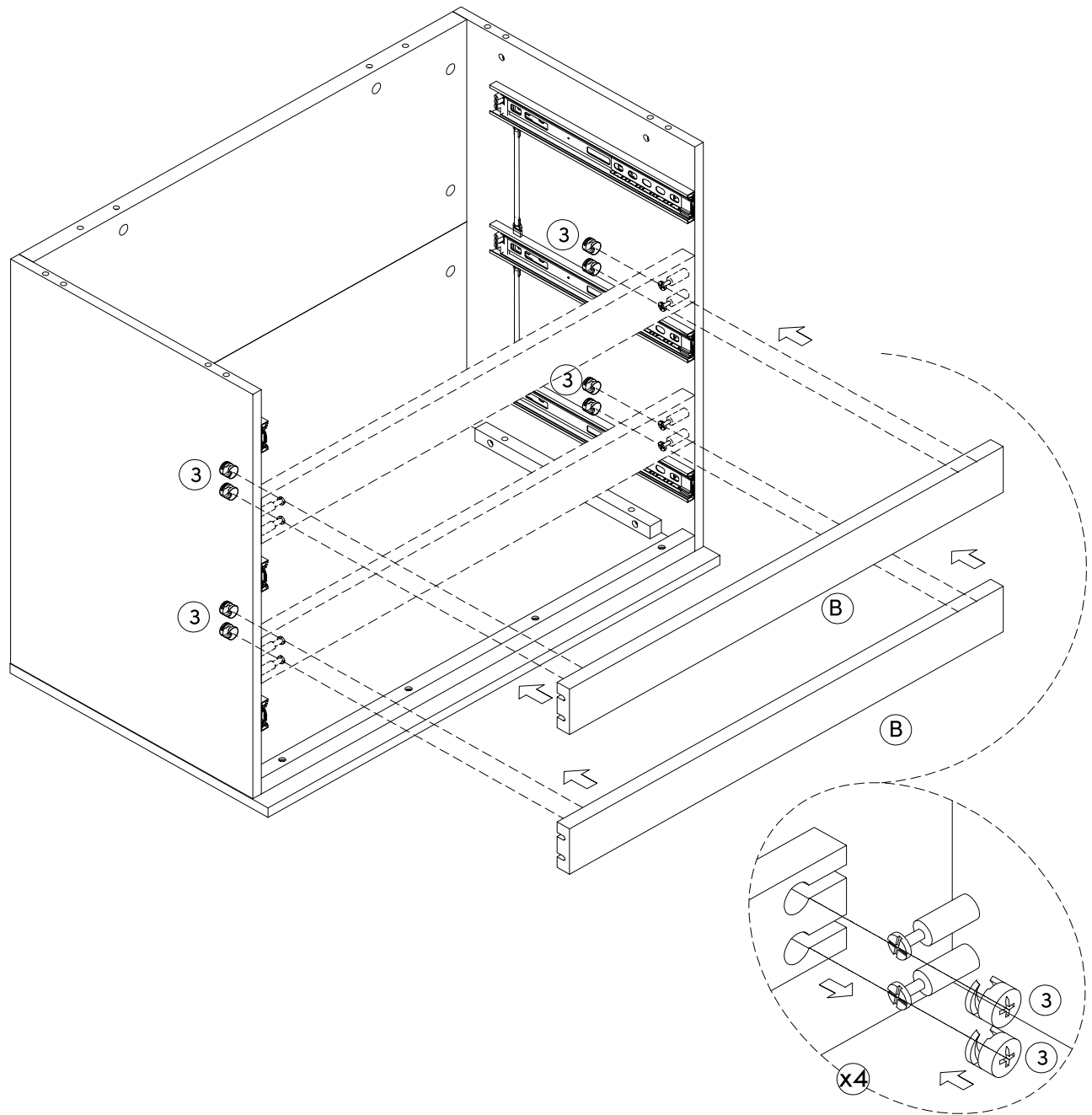
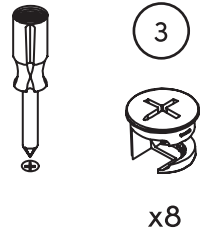
Step 4

Now attach the Top Panel (A) to the pieces you assembled in Step 3. Secure in place using the 1/4" x 32mm Hex Button Head Bolts (5), the 1/4" x 16mm Flat Washers (7) and the Cam Locks (3).



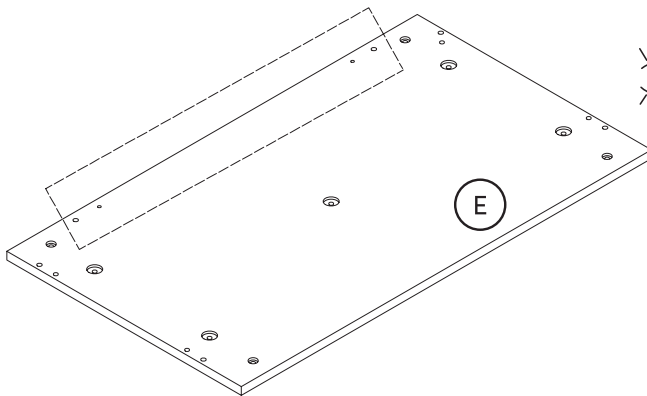
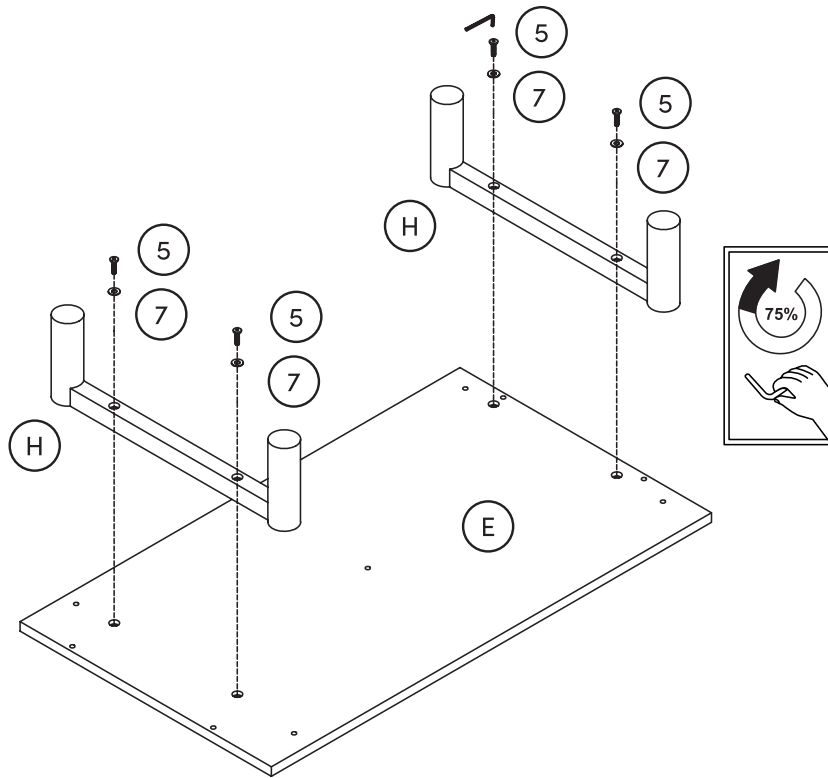
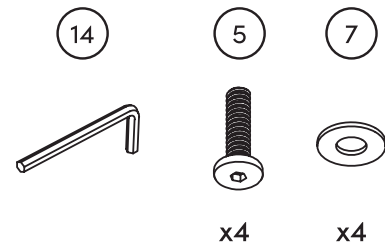
Step 5

Attach the Front Rails (B) to the dresser and secure in place using the Cam Locks (3).

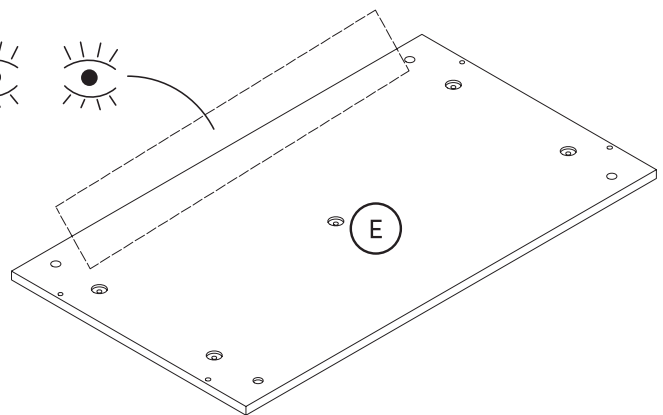


Step 6

Next, attach the Leg Frames (H) to the Bottom Panel (E) using the 1/4"×32mm Bolts (5) and Washers (7). Tighten to 75%.



✗
Incorrect

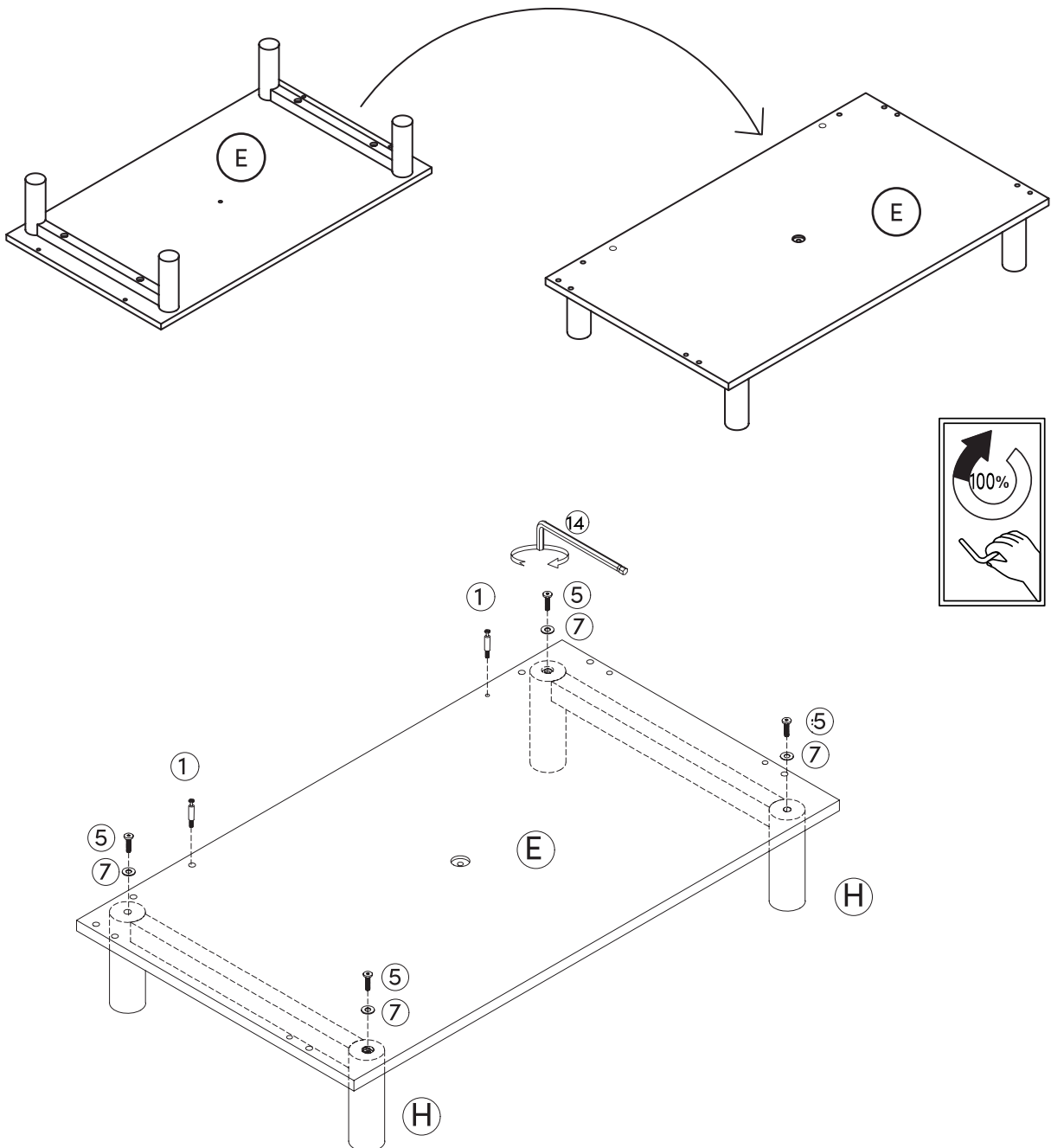
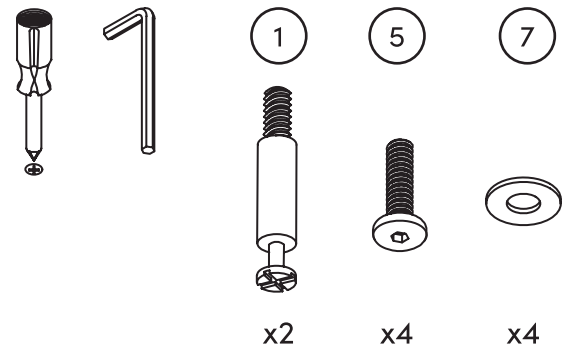


✓
Correct

Step 7

Flip the Bottom Panel (E) that you assembled in Step 5 so that the feet are on the ground. Further secure the Leg Frames (H) in place using the 1/4"×32mm Bolts (5) and Washers (7).

Then insert the Cam Bolts (1) into the Bottom Panel (E).



Step 8

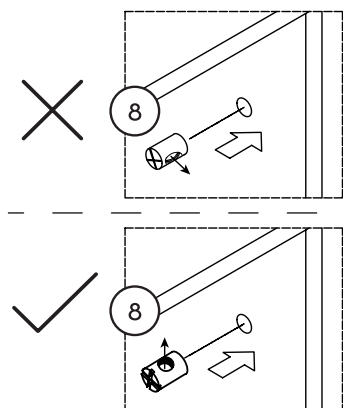
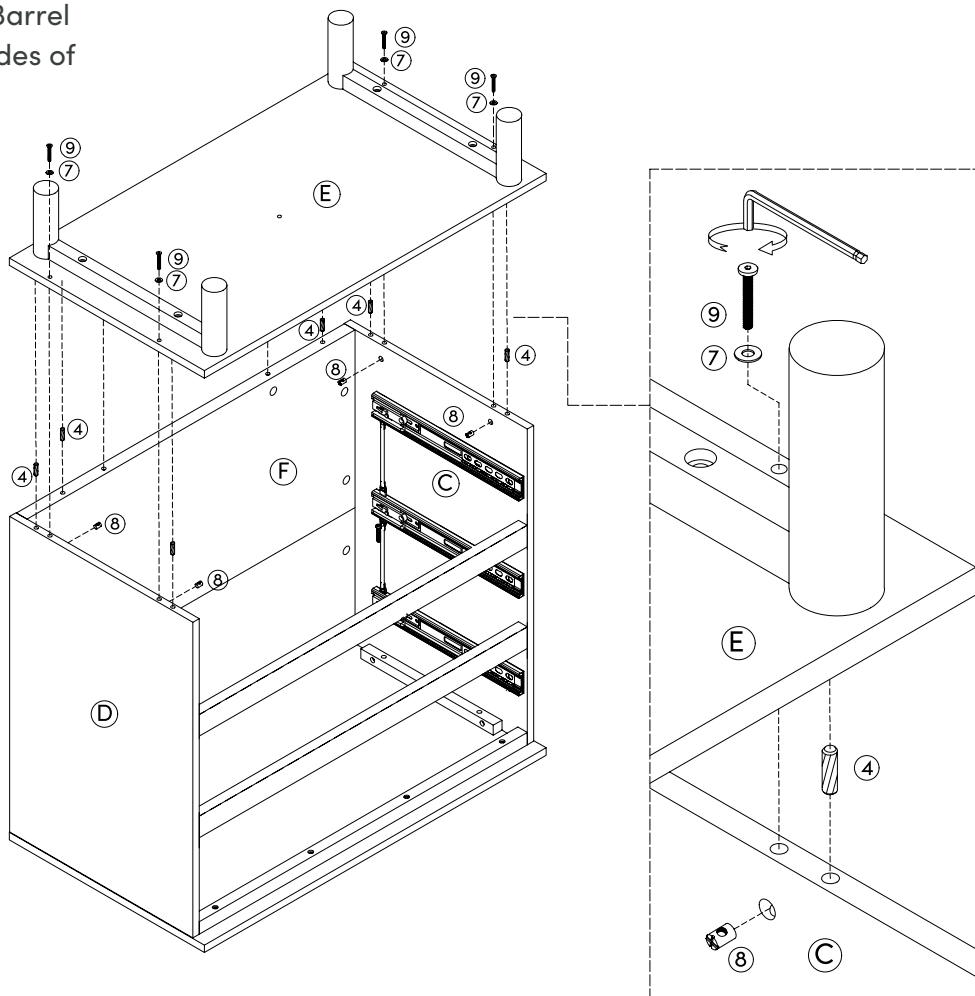
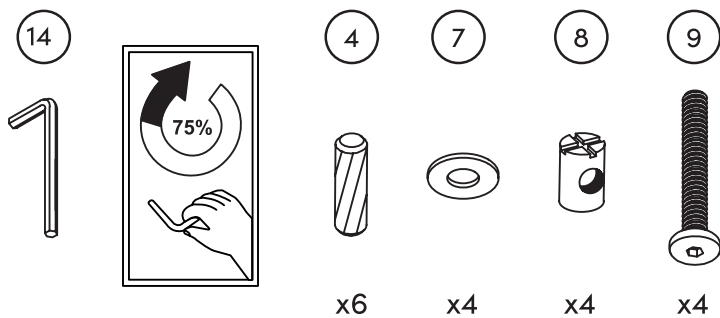
Time to combine the pieces we've put together so far.

Insert the Wooden Dowels (4) into the sides of the assembled dresser.

Next, insert the 10*12mm Barrel Nuts (8) into the interior sides of the assembled dresser.


Attach the Bottom Panel (E) to the rest of the assembled dresser using the 1/4" * 50mm Bolts (9) and Washers (7). Tighten to 75% using the Allen Key (14).

Tighten the Barrel Nuts (8) using a Phillips head screwdriver.



Helpful Tip: If the Bolt (9) isn't lining up with the Barrel Nut (8) properly, use a screwdriver to slightly turn the Barrel Nut (8) into place.

Attach the Middle Leg (1) by screwing it clockwise to tighten in place. Then attach the Foam Pads (6) to the bottom of the feet.



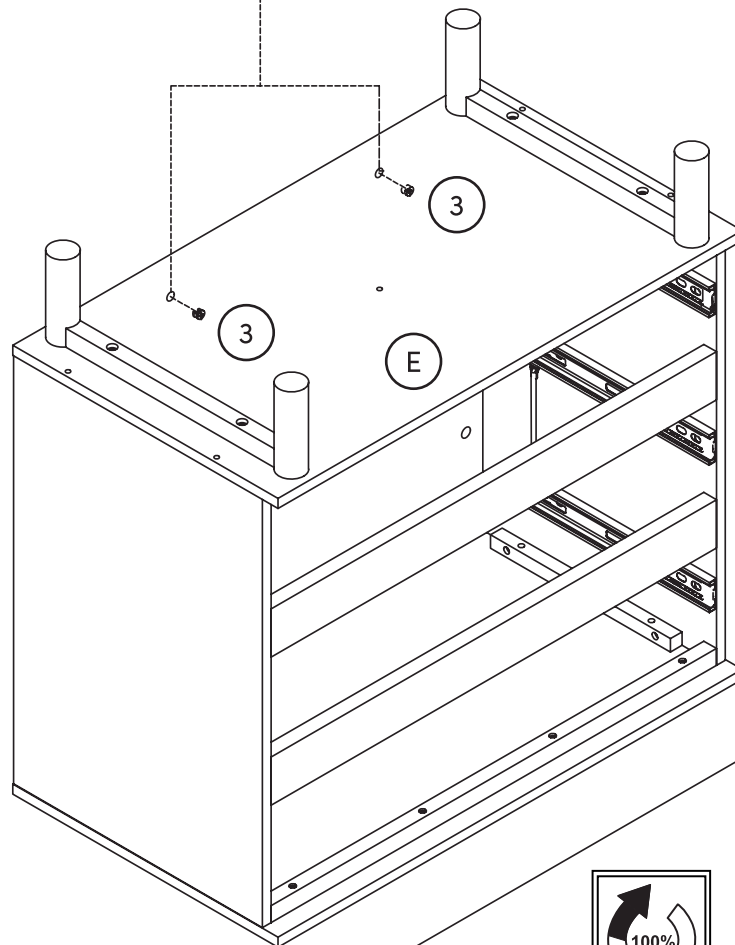
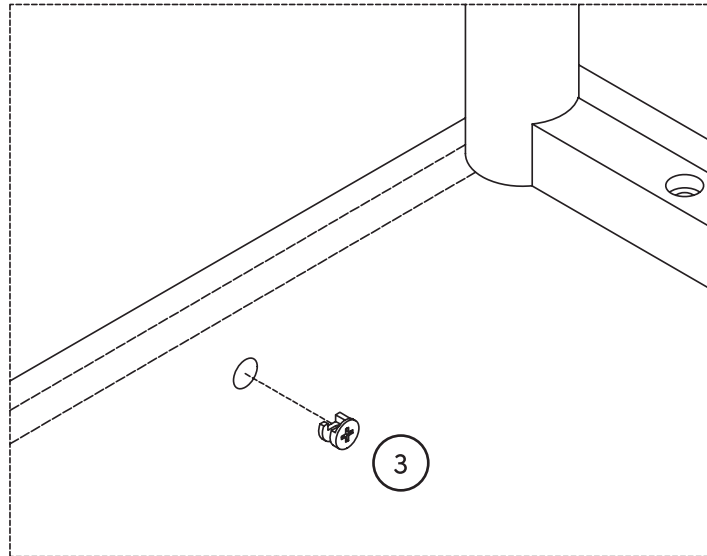
Technical drawing showing the assembly of the upper part of the cabinet. The main view illustrates the top panel (E) being attached to the side panels (H) using screws (6). A detail view on the left shows a side panel (H) being secured with a screw (6). A detail view on the right shows a side panel (I) being attached to the top panel (E) using a screw (6). A circular arrow icon with '100%' indicates that the assembly is complete.

Step 10

Insert the Cam Locks (3) into the back of the dresser. Tighten all hardware to 100%.



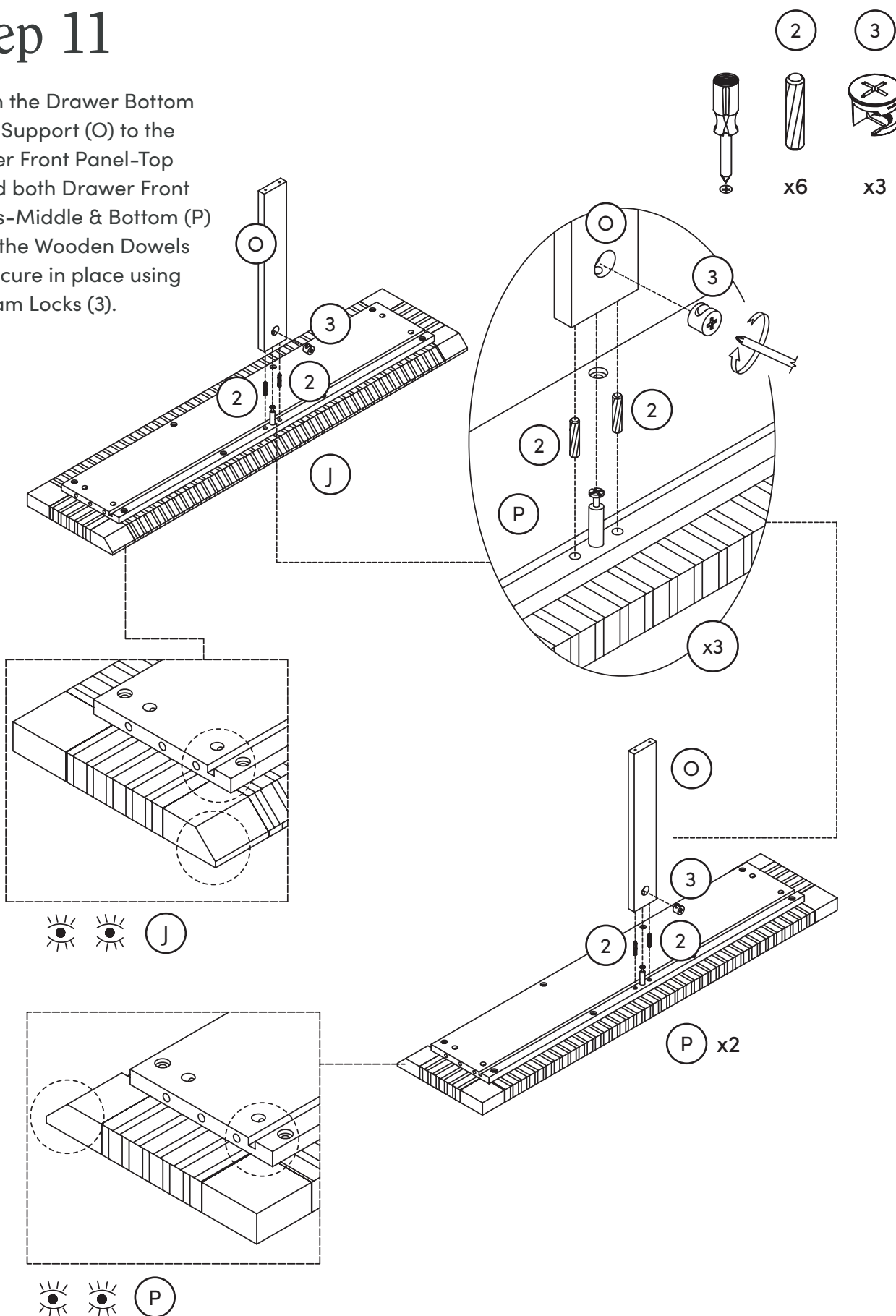
x2



Now you can tighten all previously fastened hardware to 100%.

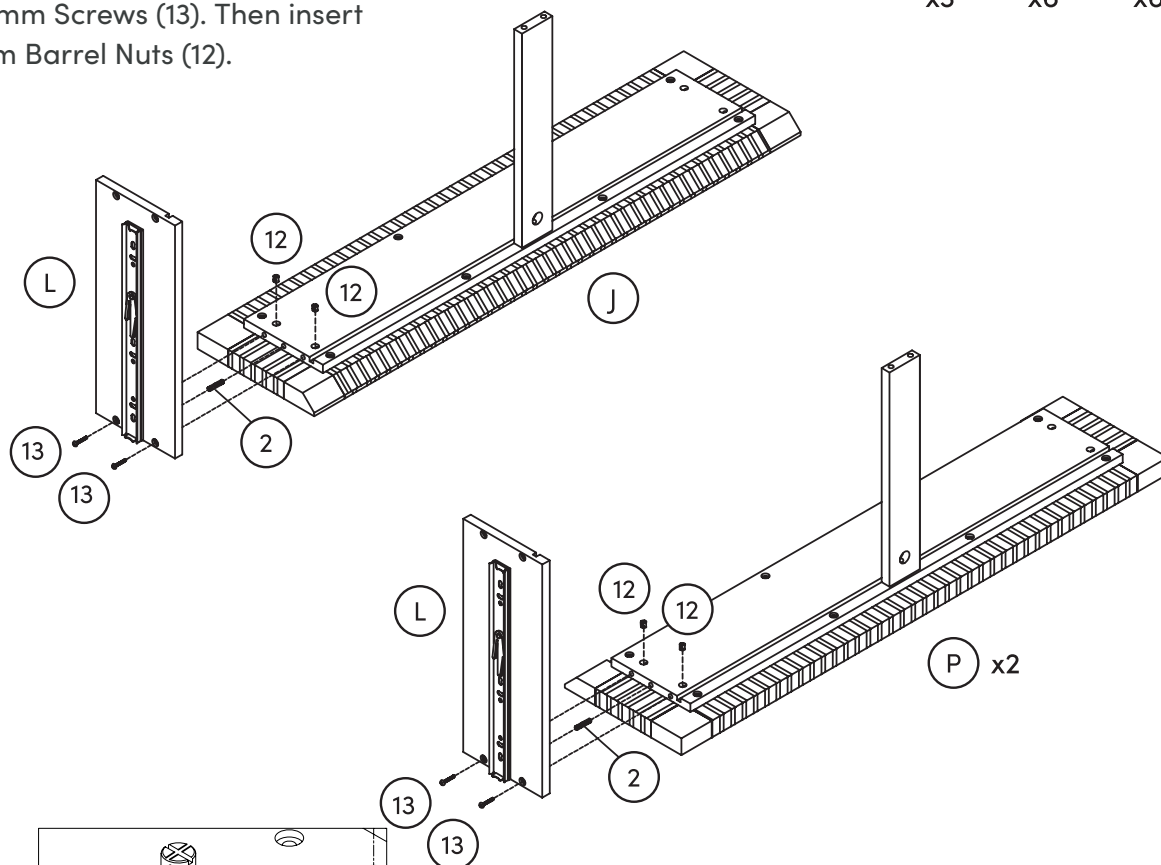
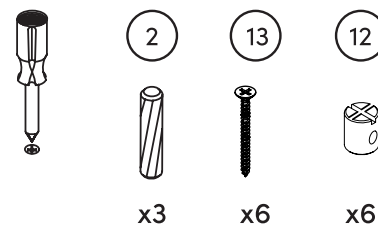
Step 11

Attach the Drawer Bottom Panel Support (O) to the Drawer Front Panel-Top (J) and both Drawer Front Panels-Middle & Bottom (P) using the Wooden Dowels (2). Secure in place using the Cam Locks (3).

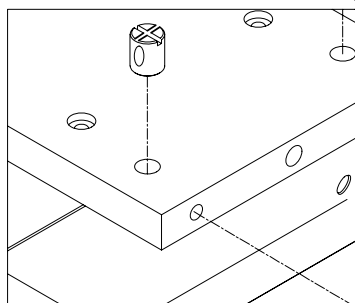


Step 12

Attach the Drawer Right Side Panels (L) to the Drawer Front Panel-Top (J) and both Drawer Front Panels-Middle & Bottom (P) using the Wooden Dowels (2) and M4*35mm Screws (13). Then insert the 10*10mm Barrel Nuts (12).

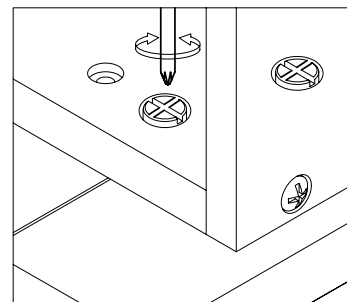
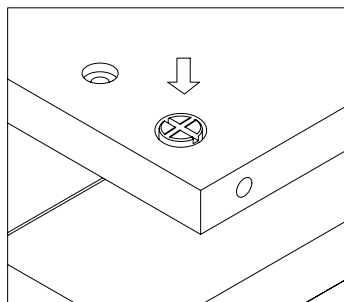
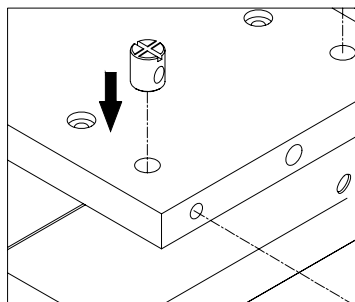



incorrect



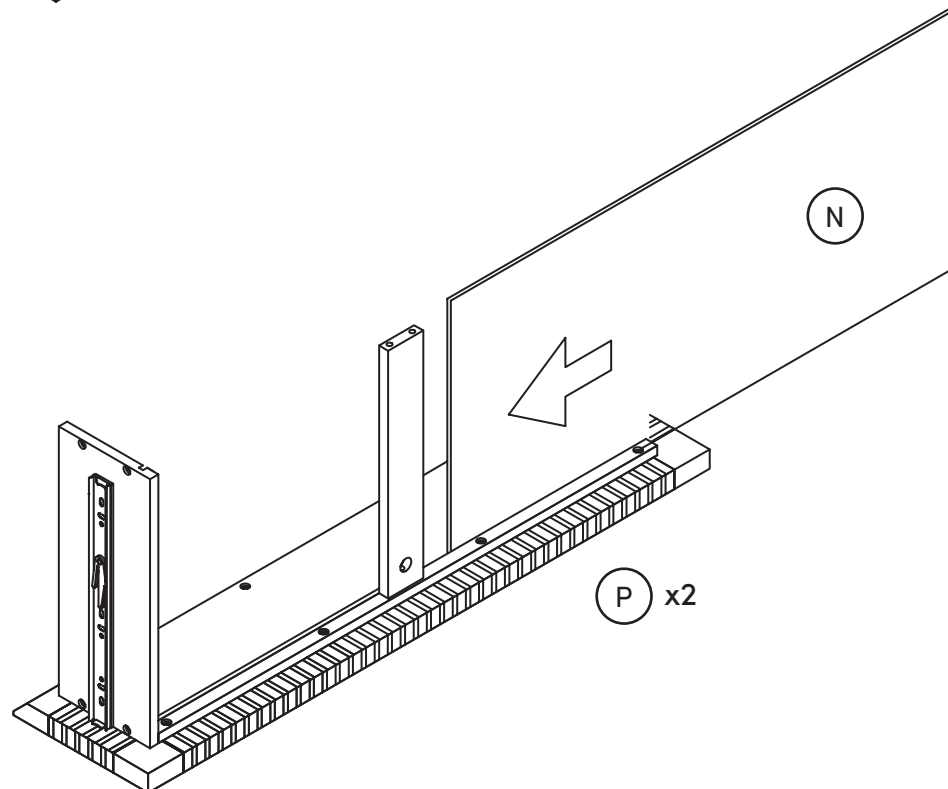
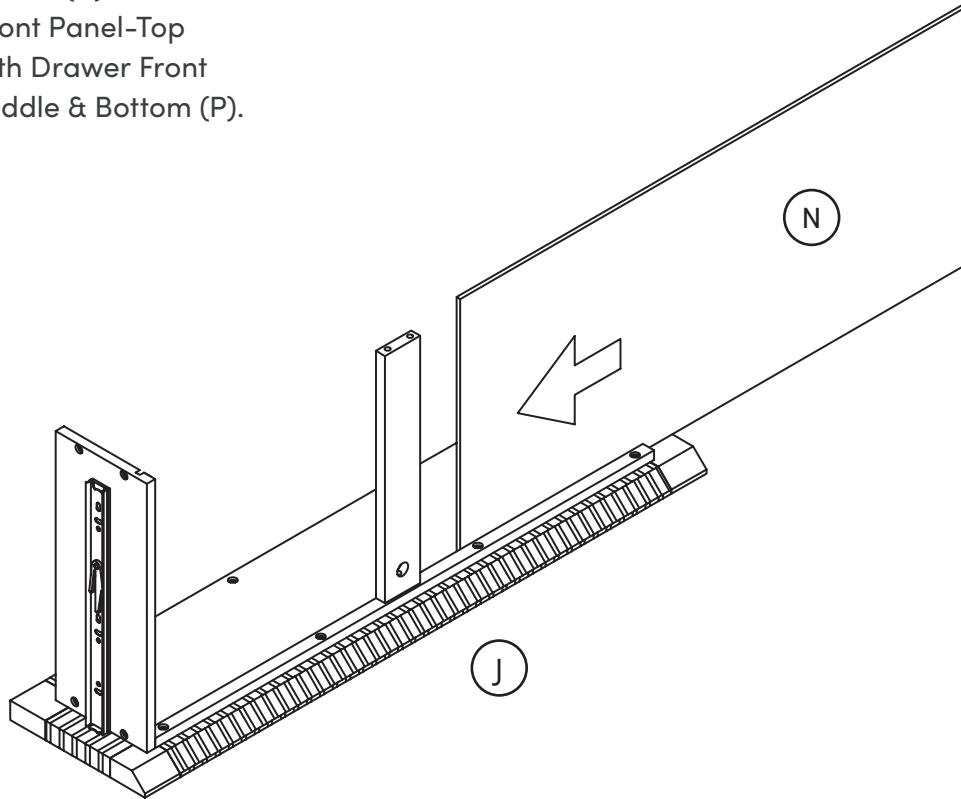
Helpful Tip: If the Bolt (13) isn't lining up with the Barrel Nut (12) properly, use a screwdriver to slightly turn the Barrel Nut (12) into place.


correct



Step 13

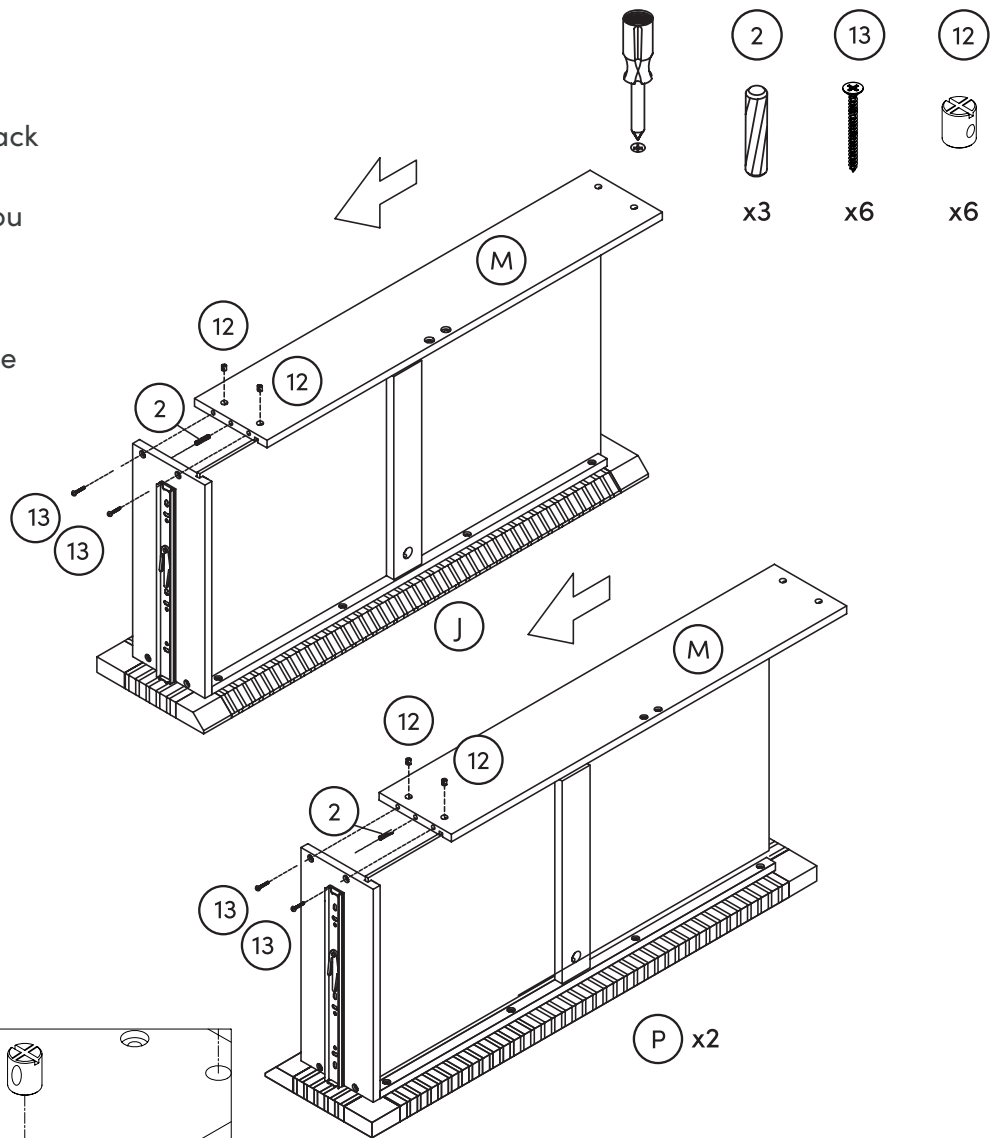
Don't worry, this step is easy! Slide the Drawer Bottom Panels (N) into the Drawer Front Panel-Top (J) and both Drawer Front Panels-Middle & Bottom (P).



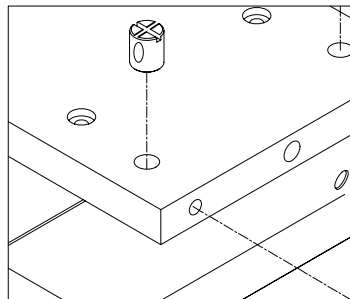
Step 14

Now attach the Drawer Back Panels (M) to the drawers in place on the drawers you assembled in Step 13.

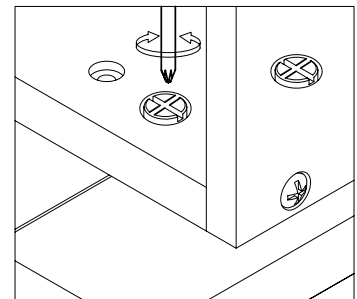
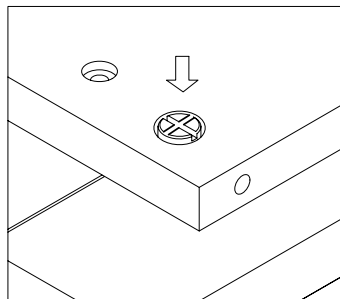
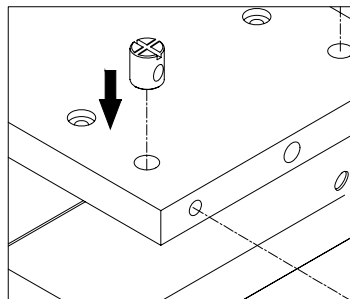
Secure by inserting the Wooden Dowels (2) into the side of the Drawer Back Panels (M). Then insert the 10*10mm Barrel Nuts (12) into the panels and secure in place using the M4*35mm Screws (13).



Incorrect



Correct



Helpful Tip: If the Bolt (13) isn't lining up with the Barrel Nut (12) properly, use a screwdriver to slightly turn the Barrel Nut (12) into place.

Step 15

Time to finish these drawers! Attach the Drawer Left Side Panels (K) to the drawers by inserting the Wooden Dowels (2) into the side of the Drawer Left Side Panels (K). Then insert the 10*10mm Barrel Nuts (12) and secure in place using the M4*35mm Screws (13).



12



x12

2



x6

13

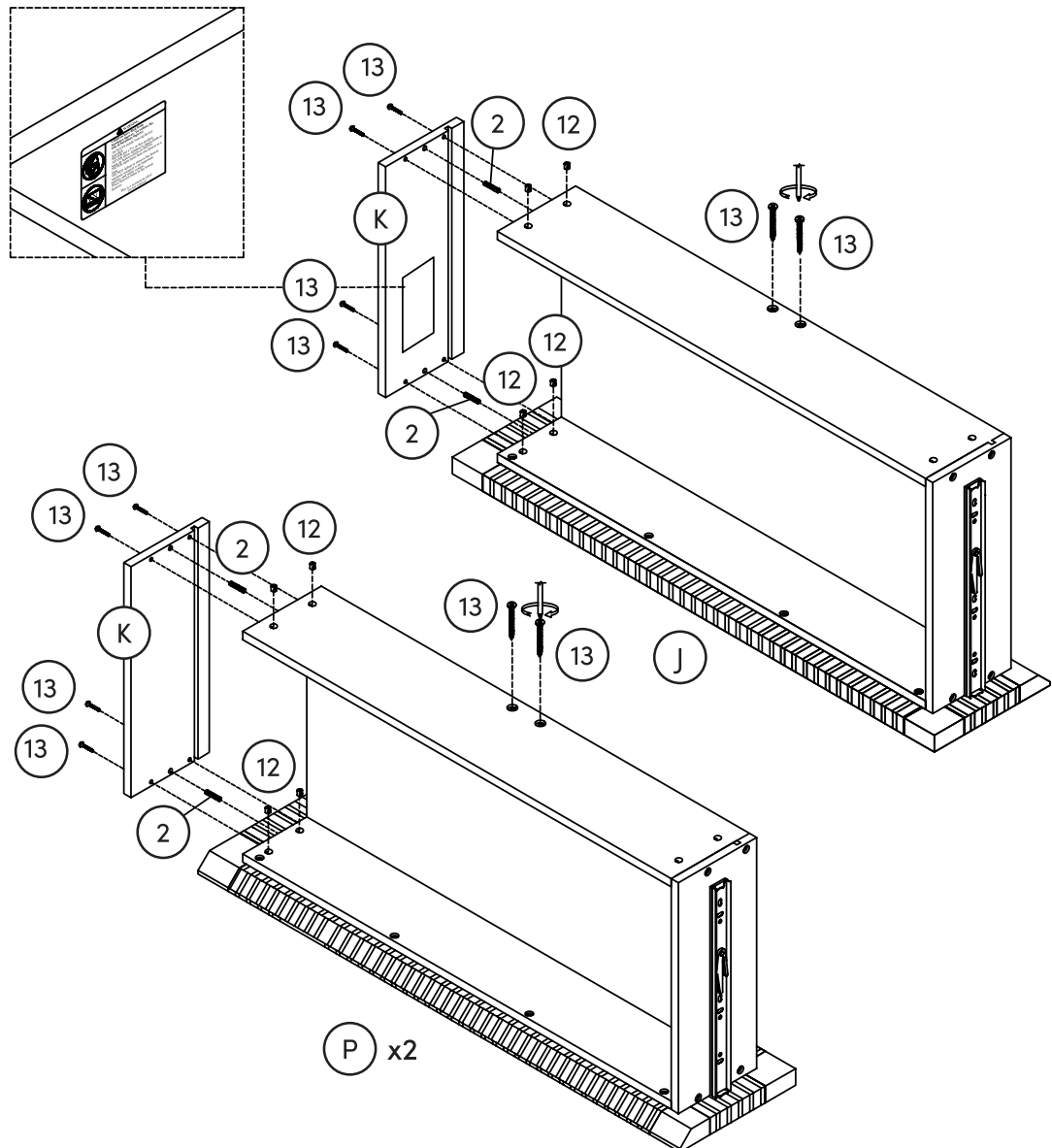


x18

Finally, insert the M4*35mm Screws (13) into the sides of the drawers to secure the bottom panels in place.



Note: Drawers with warning labels are installed on the top drawer.

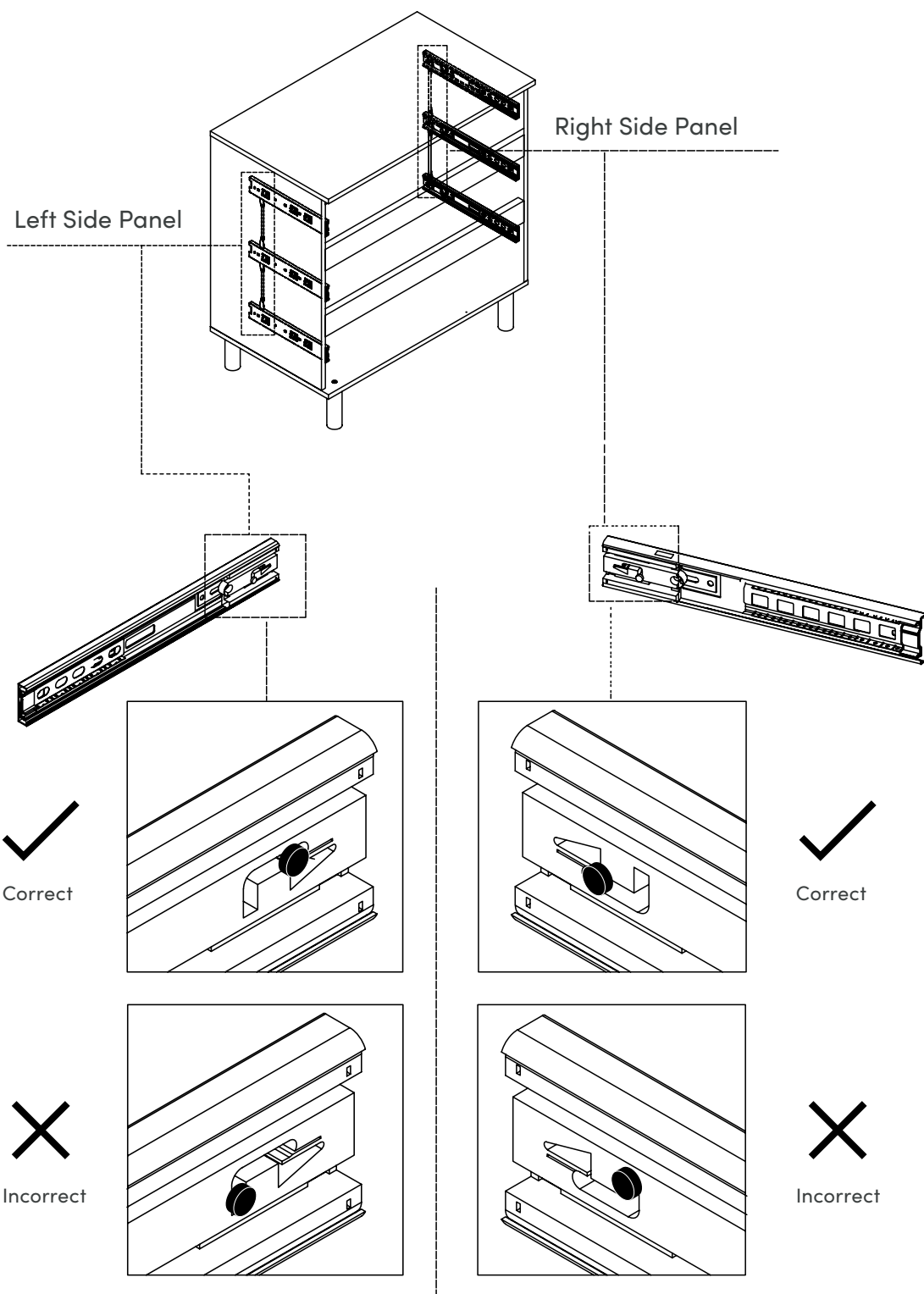


We want your products to last as long as possible, so we recommend that you tighten the bolts & screws 2 weeks after assembly and for added safety, check the tightness of all bolts & screws every 2 months.

Step 16

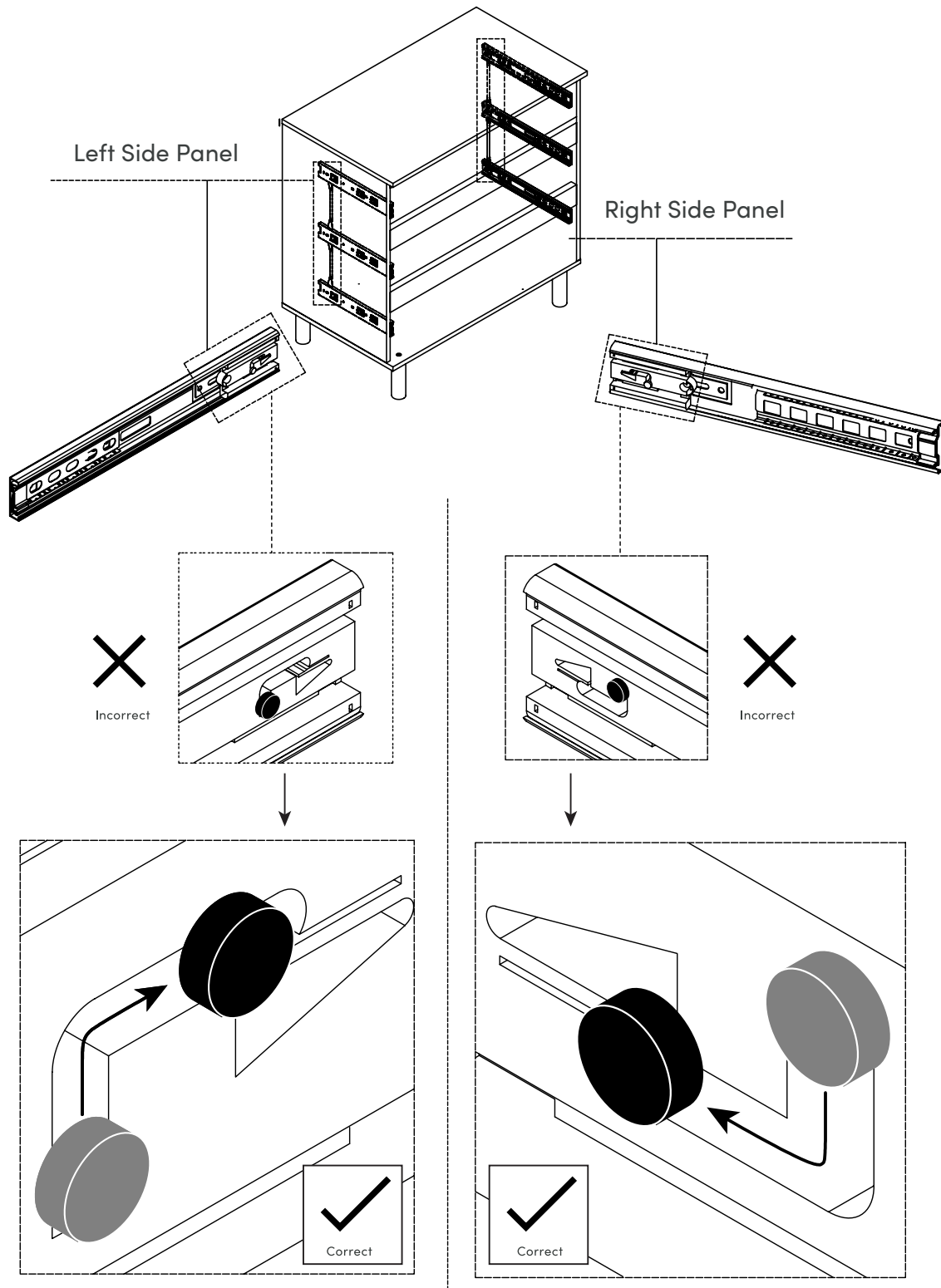
Before installing the drawer, please check that the device at the end of the slide rail is correct according to the figure below.

If the device is not in the right position, adjust the device to the correct position by hand. Refer to the next page.



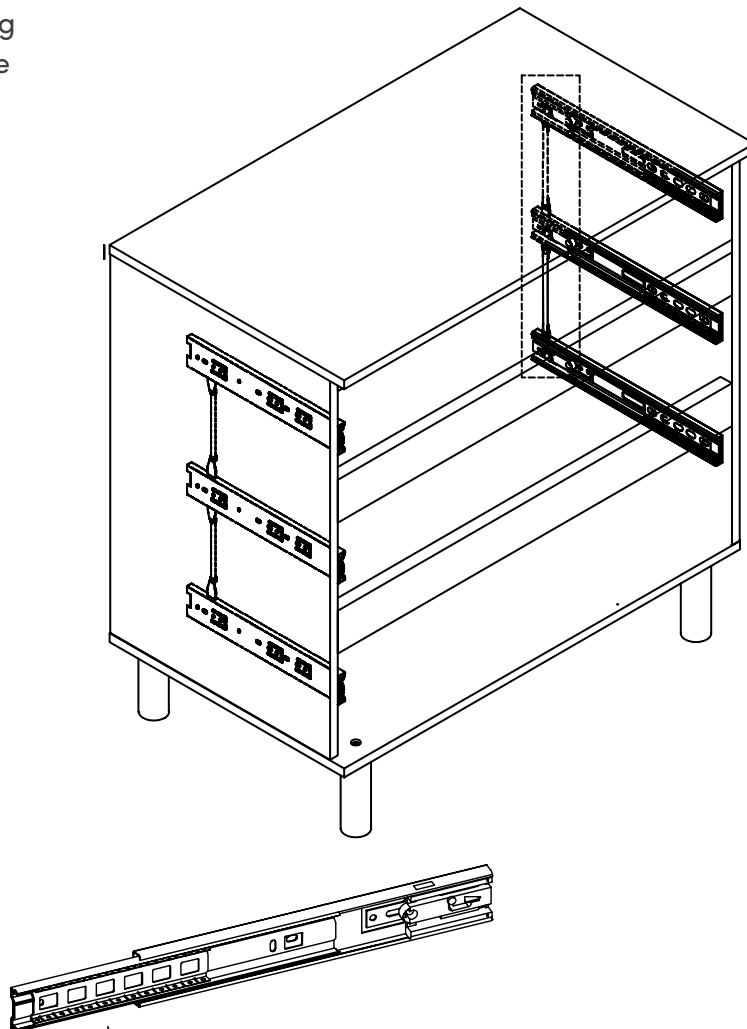
Step 17

Refer to the image below to correct the device at the end of the slide. Gently move the cylinder by hand to adjust.

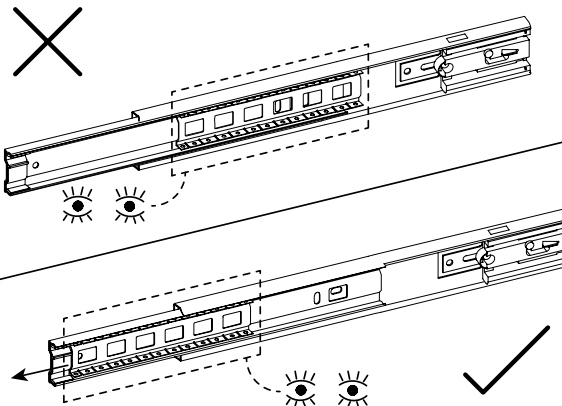


Step 18

Pull the inner ball bearing slides on each side all the way out until they stop.

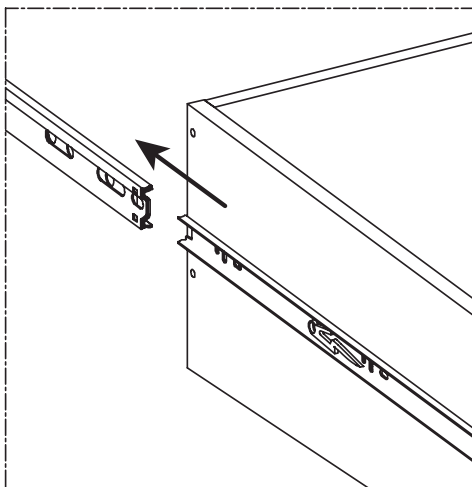
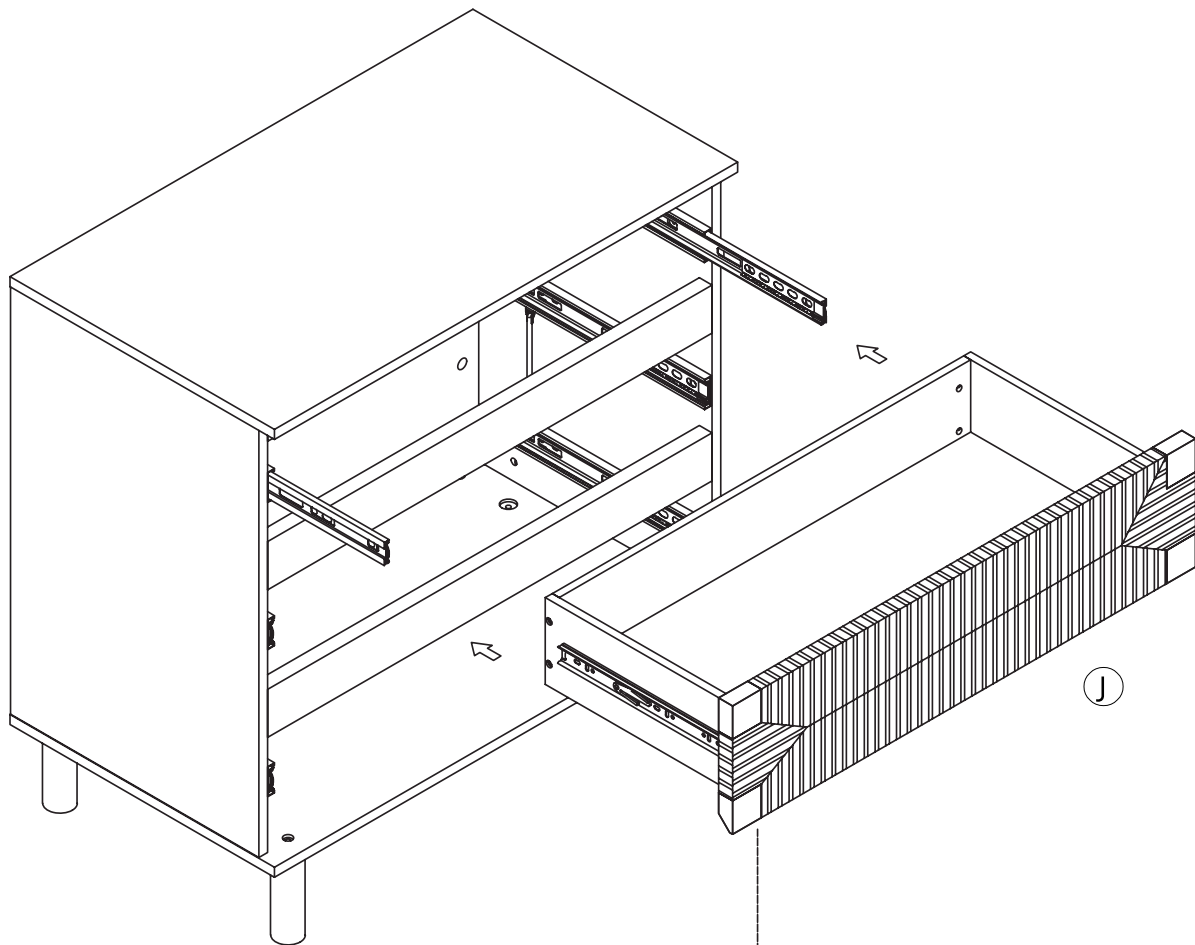


Note: Pull the inner ball bearing slides on each side all the way out until it stops (may be slightly greasy).



Step 19

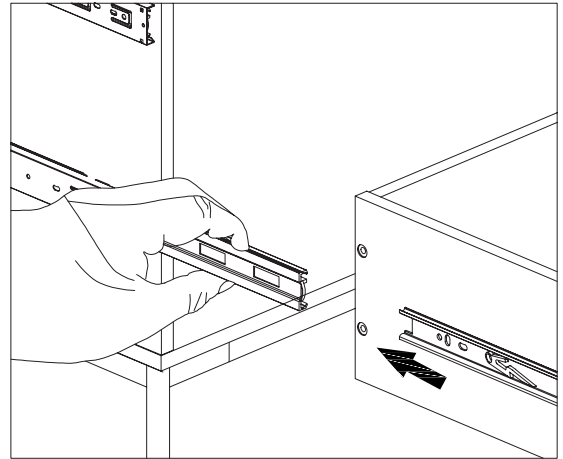
Now slide the top drawer you've assembled into the dresser.
Just a few more steps until your dresser is complete!



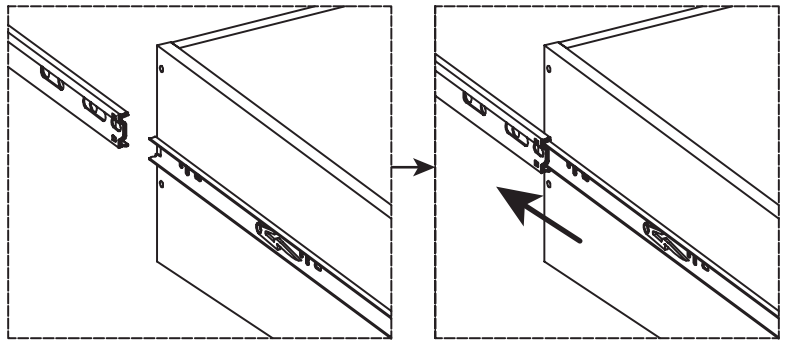
Note: You'll need 2 people to assemble the drawers, so grab a friend. During installation, both sides must be installed at the same time.

Step 20

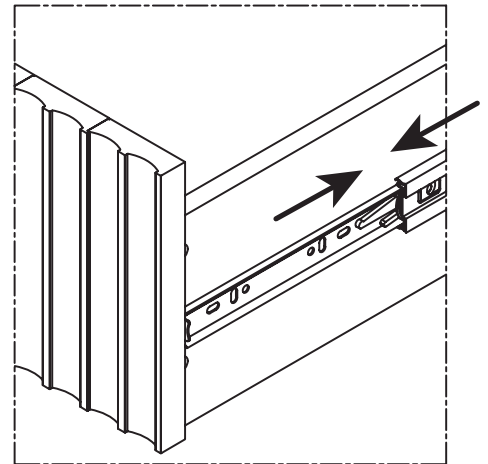
Step 1: Hold the inner ball with your hand and don't let it move during installation.



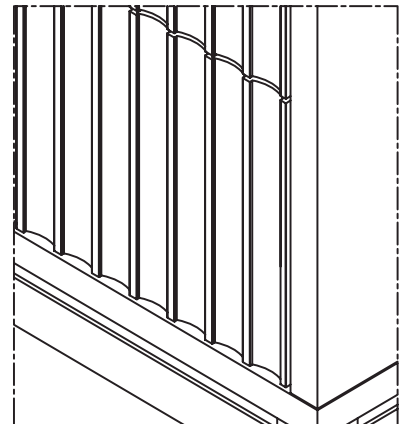
Step 2: Align the grooves on the rails. The inner ball must stay close to the track.



Step 3: Hold the inner ball and insert the track until close to the drawer panel.



Step 4: Use both hands to push the drawer in slowly.



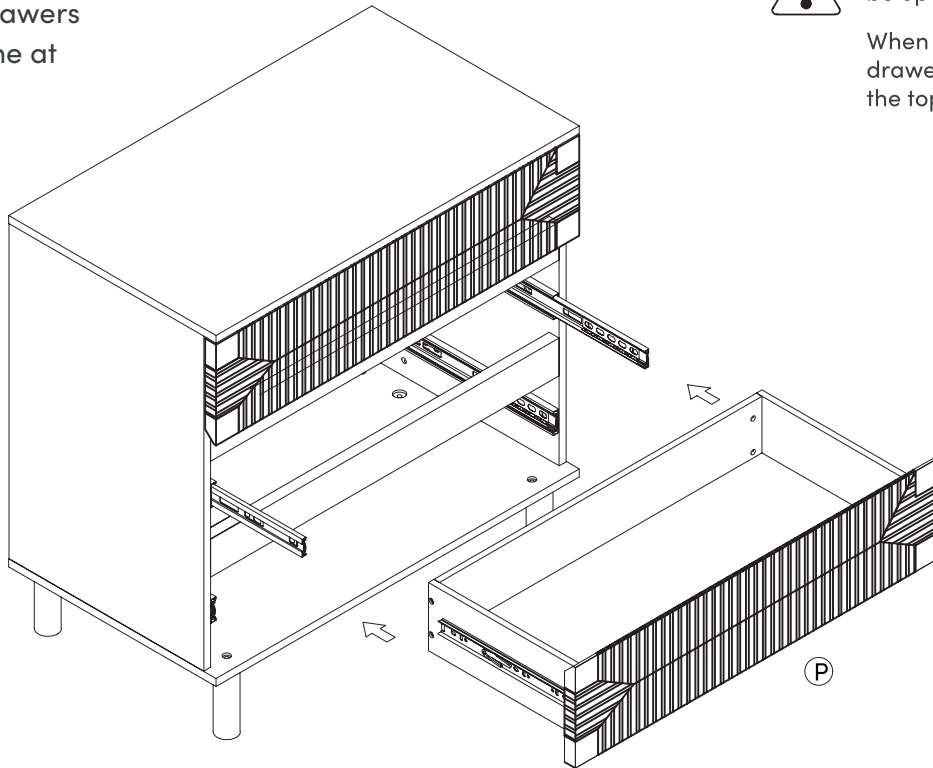
Step 21

Now slide the remaining drawers into place, one at a time.



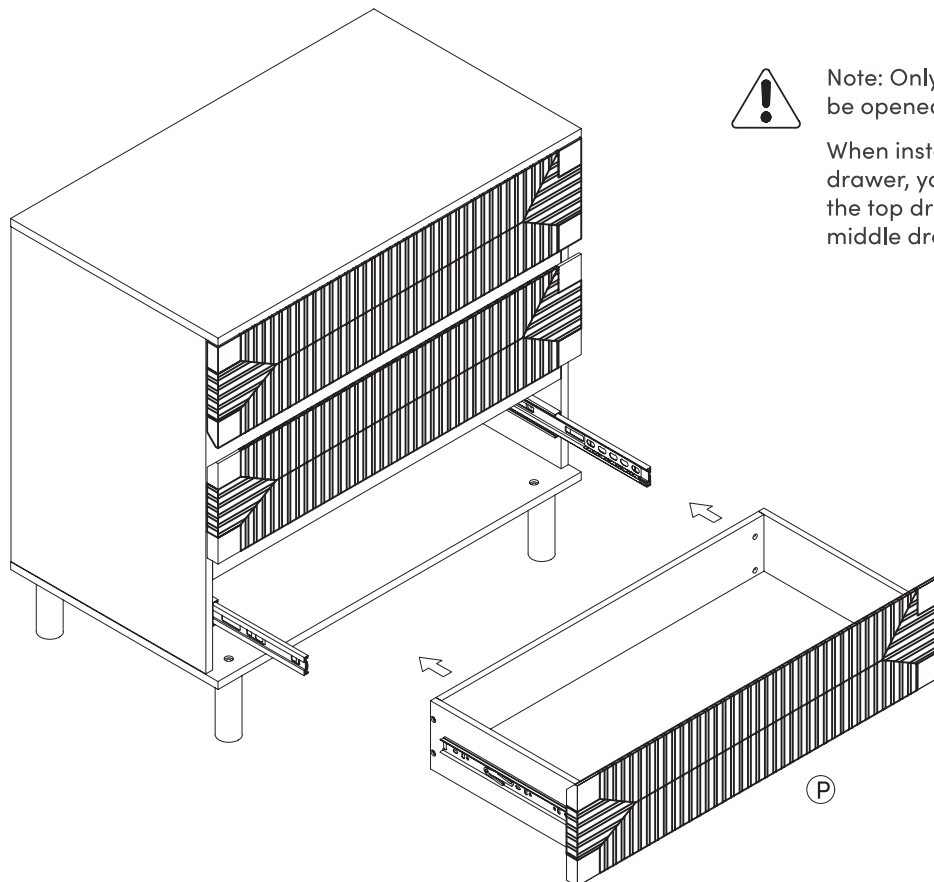
Note: Only one drawer can be opened at a time.

When installing the middle drawer, you need to close the top drawer



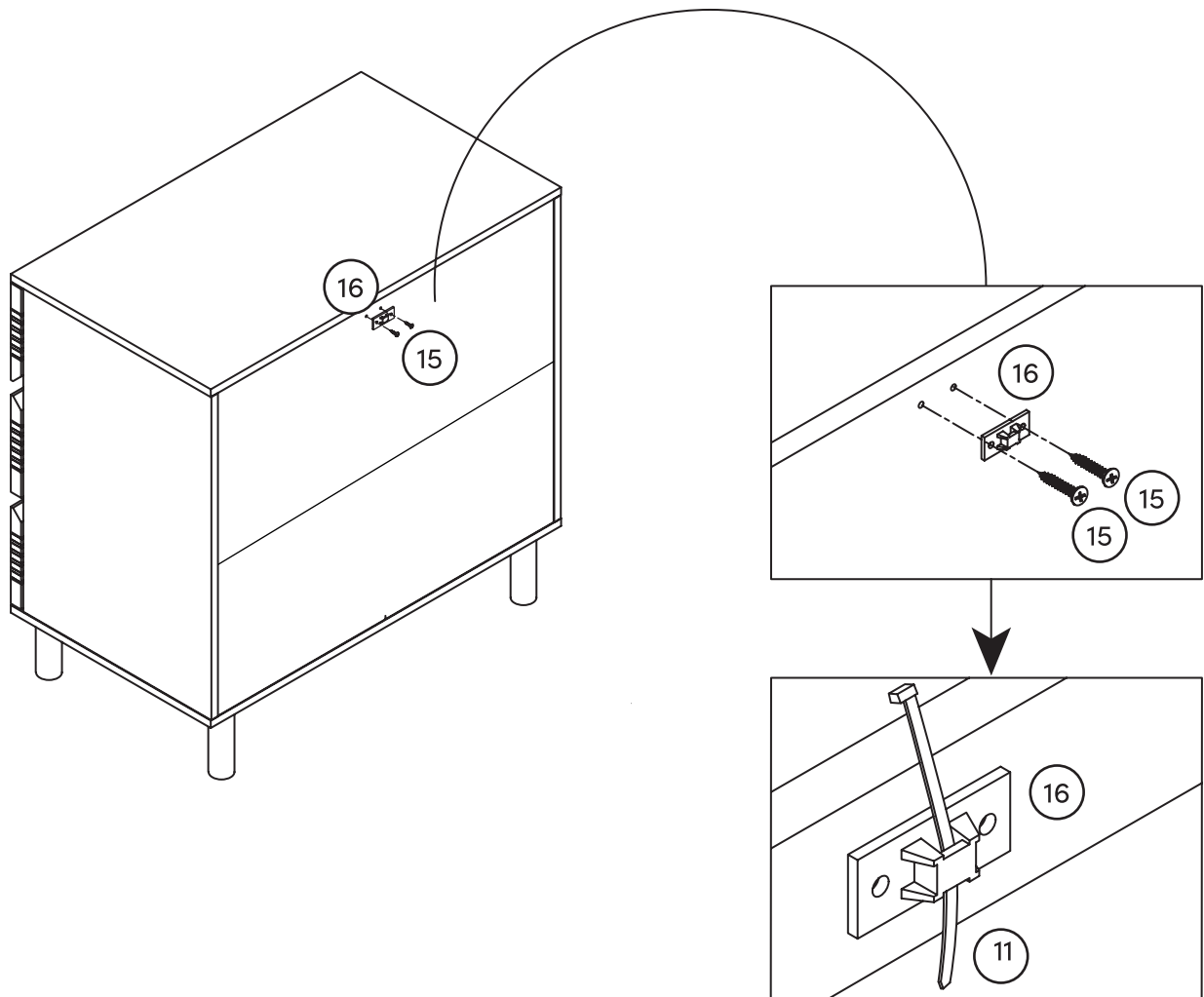
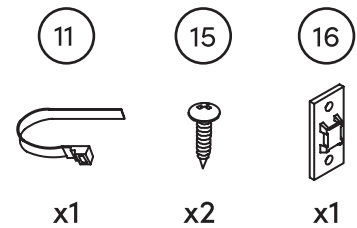
Note: Only one drawer can be opened at a time.

When installing the bottom drawer, you need to close the top drawer and middle drawer.



Step 22

For added safety, secure the dresser to the wall to prevent tipping. Use the M4*14mm Screws (15) to secure the Plastic Bracket (for Anti-Tip) (16) to the dresser. Thread the Plastic Tether (for Anti-Tip) (11) through the Bracket (16).



IMPORTANT NOTE:

Young children (and/or pets) can be seriously injured by tipping furniture units.

You must install the provided anti-tip kit hardware solution, as instructed, to prevent the furniture units) from tipping over - which could possibly lead to injuries or damage.

The provided anti-tip kit hardware solution is intended only as an additional safety measure & deterrent; it is not a substitute for proper adult supervision.

The provided anti-tip kit hardware solution is not an earthquake restraint. If you wish to add the extra security of earthquake restraints, they must be purchased & installed separately.

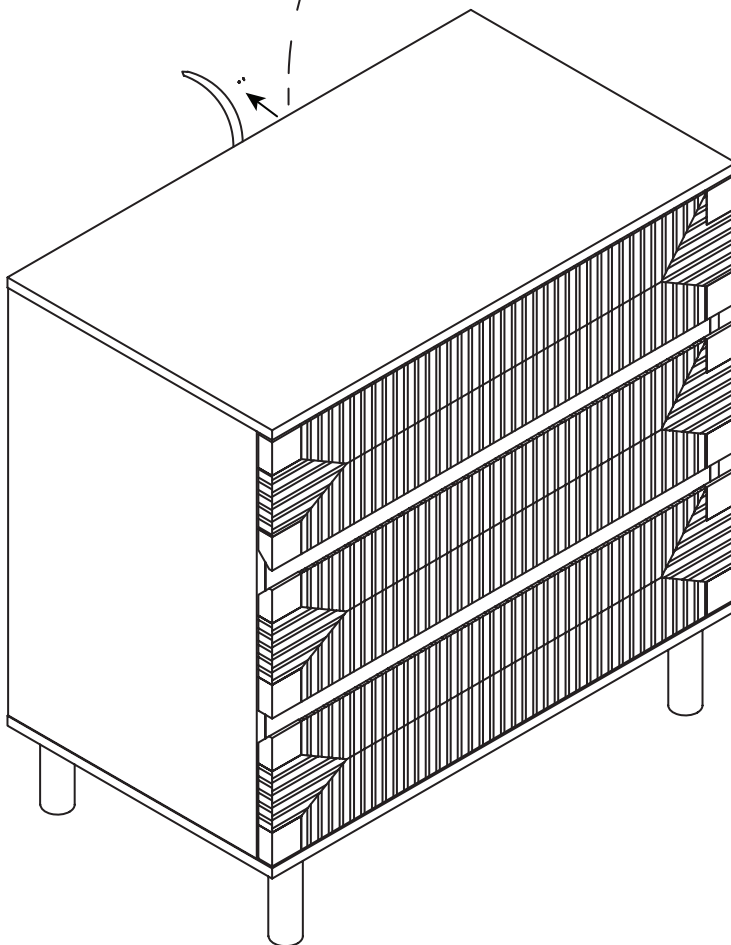
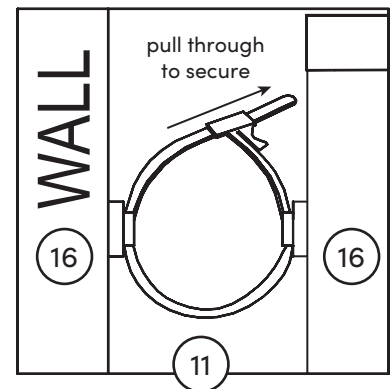
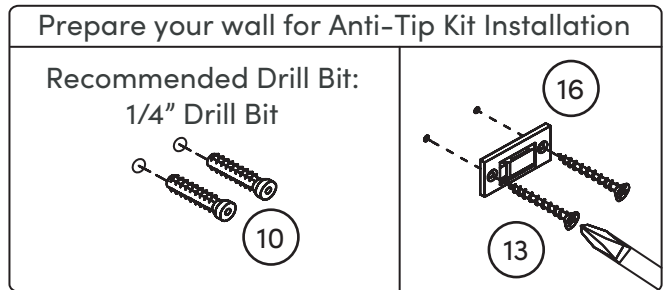
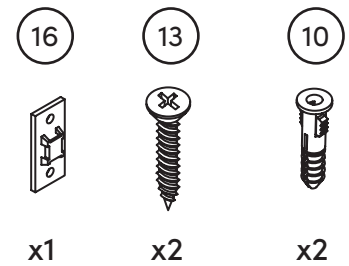
Step 23

Now we'll secure the anti-tip bracket to the wall.

To prepare your wall, use a 1/4" drill bit to drill pilot holes into the wall in preparation for the anchors.

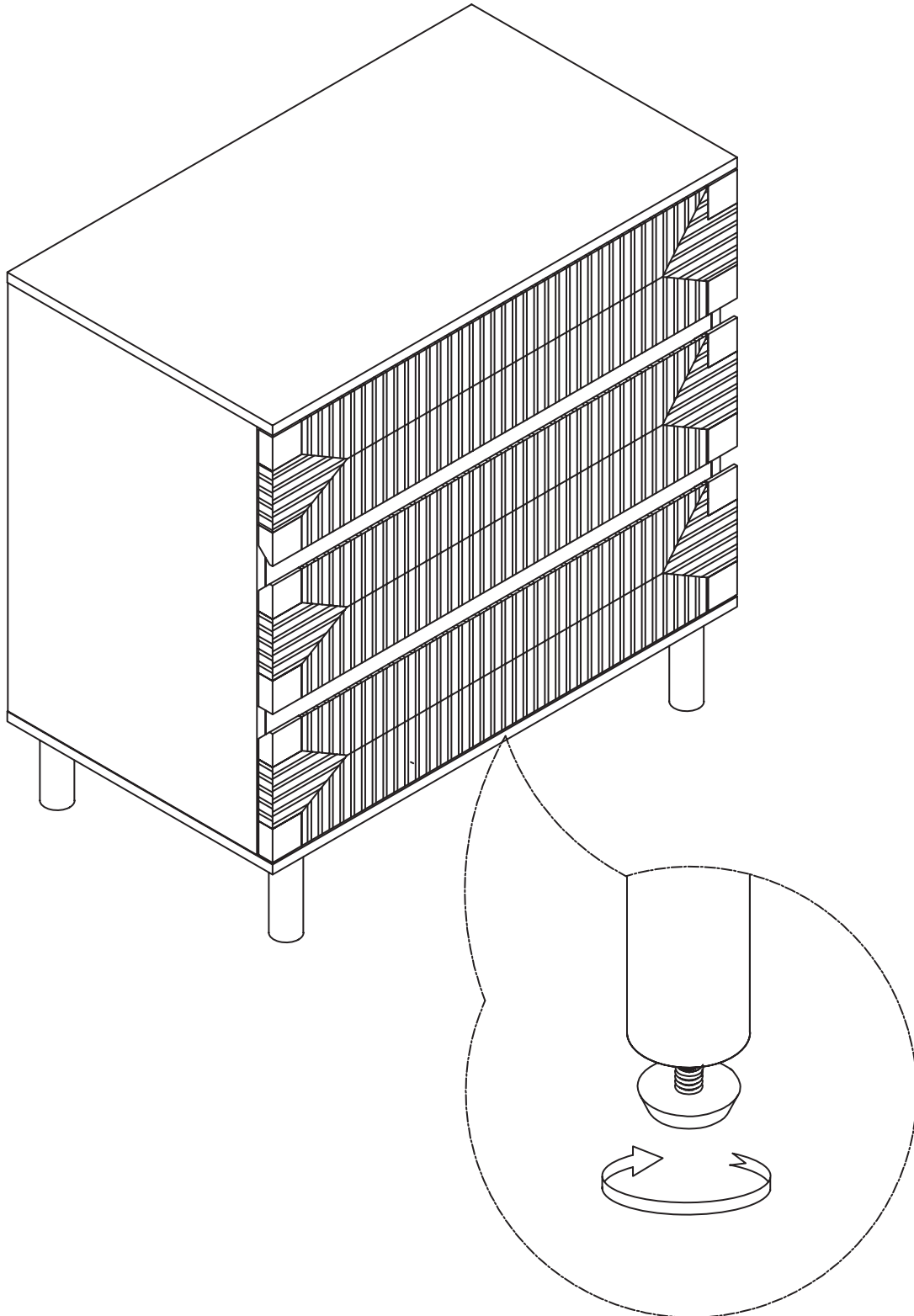
Next, drill the Plastic Bracket (16) into the wall in the pilot holes you just drilled using the M4*35mm Screws (13).

Thread the Plastic Tether (11) through both parts of the Bracket (16) to secure to the wall.



Step 24

If the dresser is wobbly or unstable,
simply adjust the feet until stable.

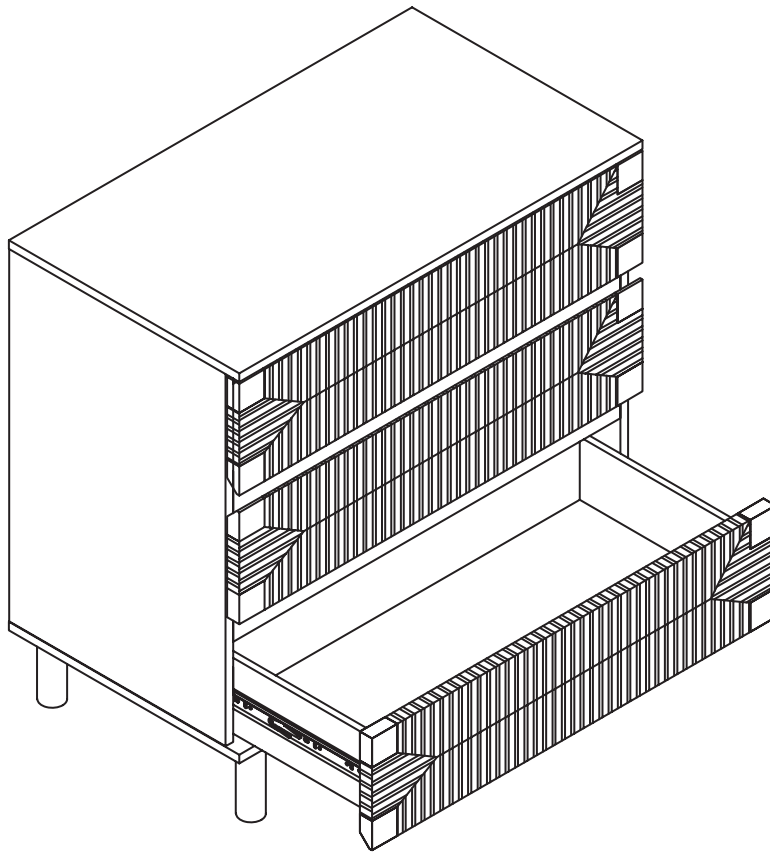


Step 25

You did it! Your new dresser is now complete!

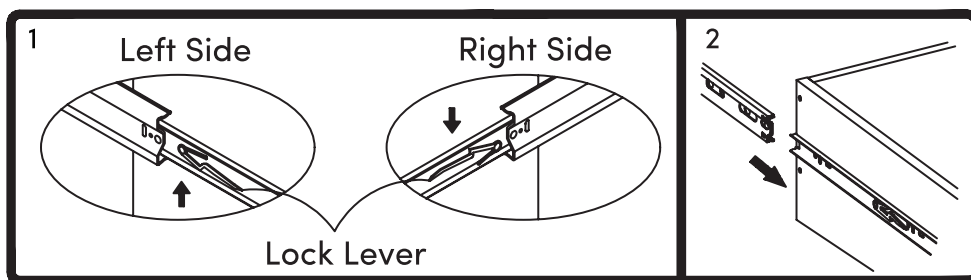


Note: Only one drawer can be opened at a time.



To Remove Drawer, If Needed

- Pull the drawer fully open so levers are visible.
- Push up on left side lever and down on right side lever.
- Holding levers in place, pull drawer toward you.



Warning: Risk of injury to persons – do not place a television on this furniture. This furniture is not approved for use with a television.

No heartburn, when we handle the return

Give us a call **1-866-619-1004** or shoot us a message
at **help@nathanjames.com** we will issue you a free
replacement with **zero hassle**.

Our way



Give us a call



Replacement



You

Their way



Re-package item



Schedule pick up



Track package



Replacement



You

We really don't want you to go through the hassle of re-packaging your item
and sending it back, because let's be honest...nobody has time for that.

Safety first, fun later

We want your product to last as long as possible, so we recommend that you tighten the screws 2 weeks after assembly and for added safety check the tightness of all screws every 2 months.

For proper care and treatment, please check our website at NathanJames.com/products

Safe use of this product starts with you.

Use this product responsibly with the primary concern for your safety. Follow assembly instructions carefully and inspect product upon receipt and each use.

Nathan James and its parent companies cannot be held legally responsible for any injuries or death resulted from failure to follow instructions or improper use of this product.

Do not modify the structure of this product in any way.

Our products have been tested to meet specific safety measures as they were originally intended to be sold. Any modifications will present the risk of creating significant safety issues which NJ will not be responsible for.

Proper use

DO NOT	use for commercial purposes
DO NOT	frolic on dresser
DO NOT	use dresser as foot stool
DO NOT	leave spilled liquid on dresser
DO NOT	use dresser if damaged
DO NOT	make temporary repairs
DO NOT	use outdoors

We are only in business if you're happy

For starters, thanks for being you.

☎ Toll-free at 1-866-619-1004

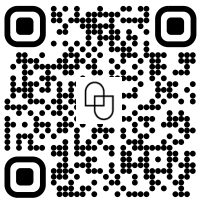
✉ Help@nathanjames.com

🌐 NathanJames.com/help

We do our best to ensure your furniture arrives without any problems, but occasionally mistakes happen—as humans we are imperfect beings. In the event that a part is damaged or missing, we will be more than happy to provide you with replacement part(s) for free.

Warranty

This product comes with a lifetime warranty from the date of purchase. Please use your phone to scan the QR code to register your product or visit <https://goo.gl/i9dk3q>



Did we do alright? Please spread the love!

If you are happy with your product, tell your friends and family about us or even better leave us a review online. Spreading the word gives us the opportunity to make more people happy and keep our prices low for your next purchase.

Brooklyn Burdon

Founder, Nathan James