

Bathroom Vanity

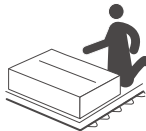
ASSEMBLY INSTRUCTIONS

Notice:

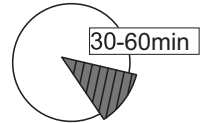
1. Follow the installation instructions. Please confirm all accessories are preset before installation.
2. Do not fully tighten the screws during initial assembly. Fully tighten screws only once all pieces which are correctly assembled.
3. If you encounter any problems during installation, please contact our customer service.
4. Please unbox the item from the side with an open-label and put a carpet on the floor to avoid scratching it.



Recommended installers : 2



Put a carpet on the floor
before unpacking



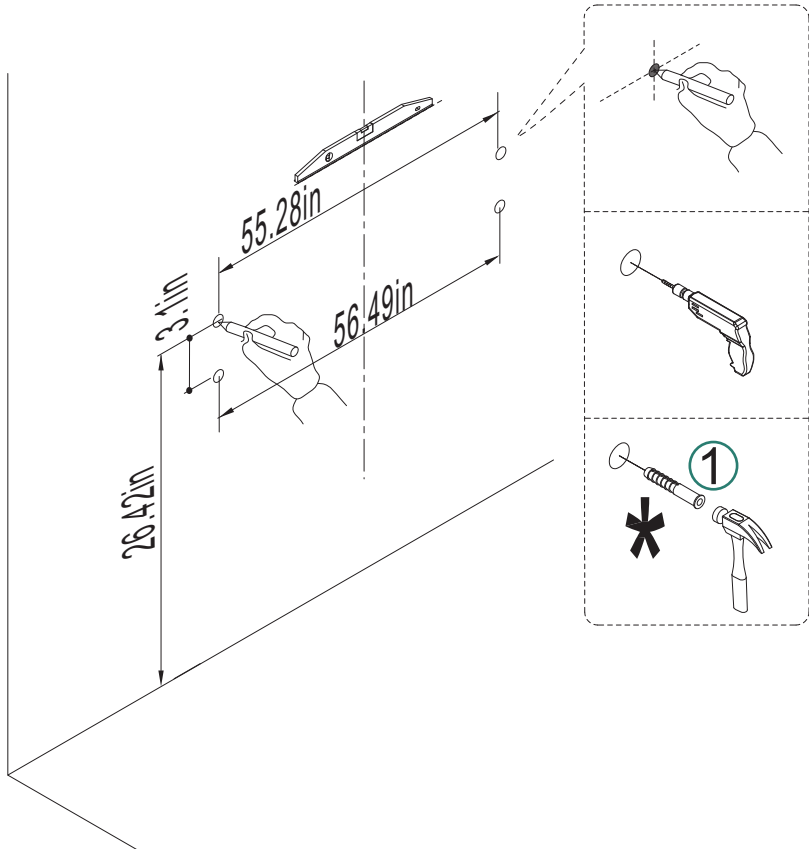
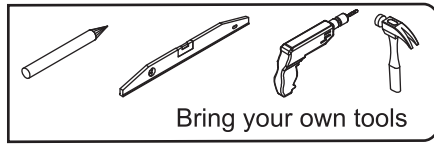
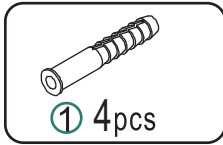
Estimate installation time:
30 minutes

Item no.	Reference Image	Qty
A		x1
B		x1
C		x4
1		x4

Item no.	Reference Image	Qty
2		x4
3		x4
4	 Ø3.5x14mm	x8
5		x6

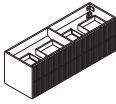
ASSEMBLY INSTRUCTIONS

1



ASSEMBLY INSTRUCTIONS

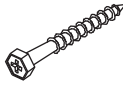
2



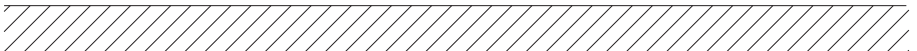
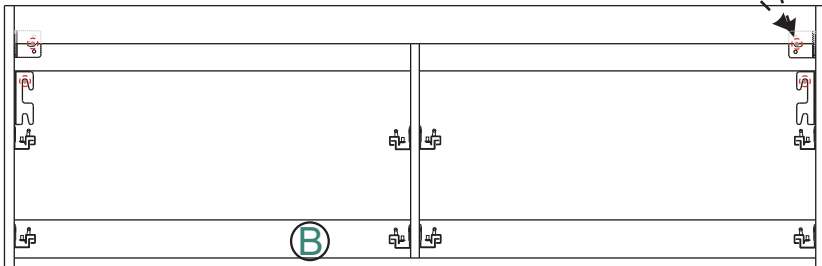
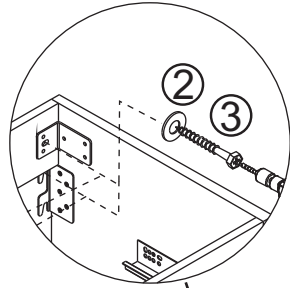
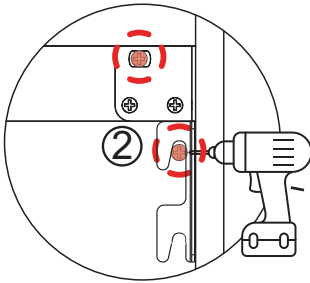
⑧ 1pc



② 4pcs

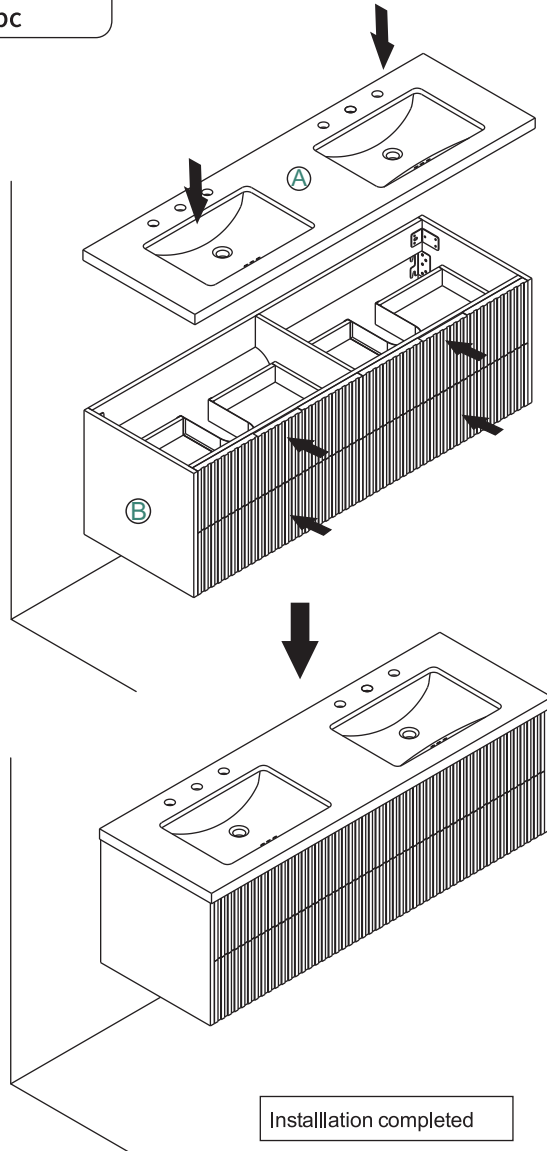
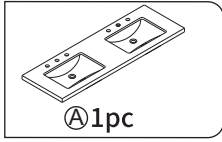


③ 4pcs



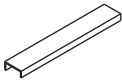
ASSEMBLY INSTRUCTIONS

3



ASSEMBLY INSTRUCTIONS

4



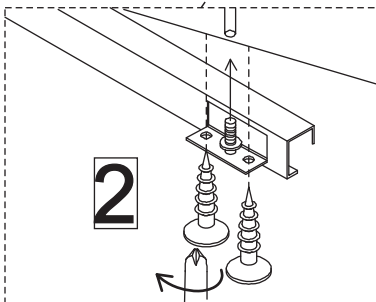
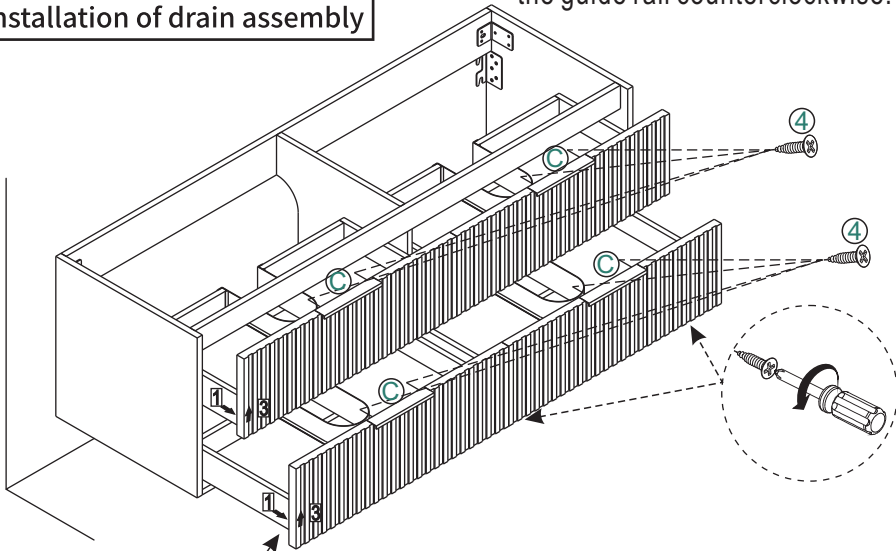
② 2pc



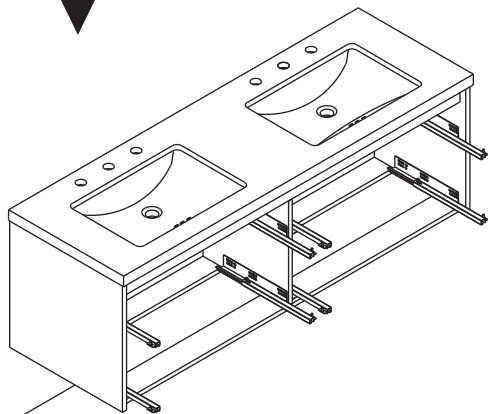
④ 8pcs

Installation of drain assembly

Turn the screw at the bottom of the guide rail counterclockwise!



Move out the drawer

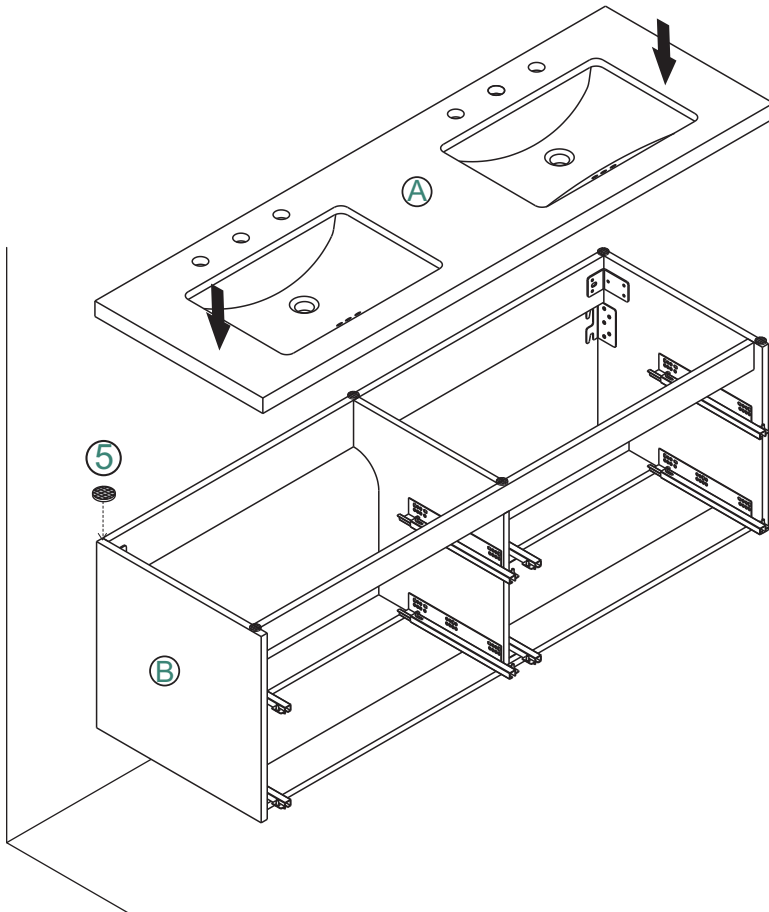


ASSEMBLY INSTRUCTIONS

5

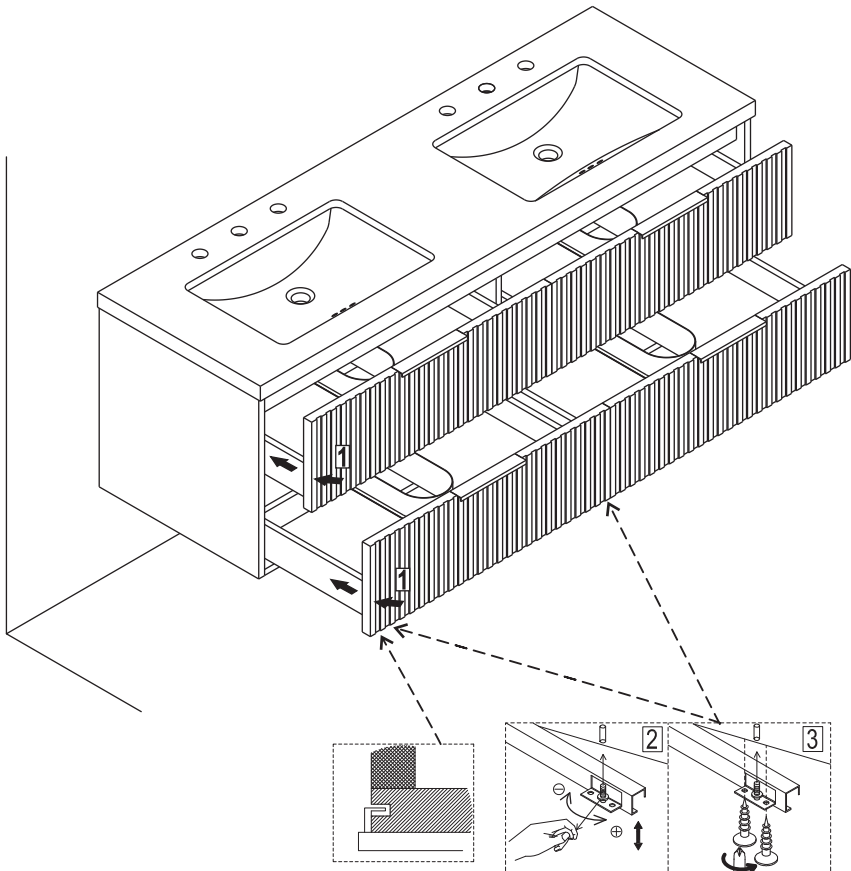


⑤ 6pcs



Installation of drain assembly

6



Installation completed