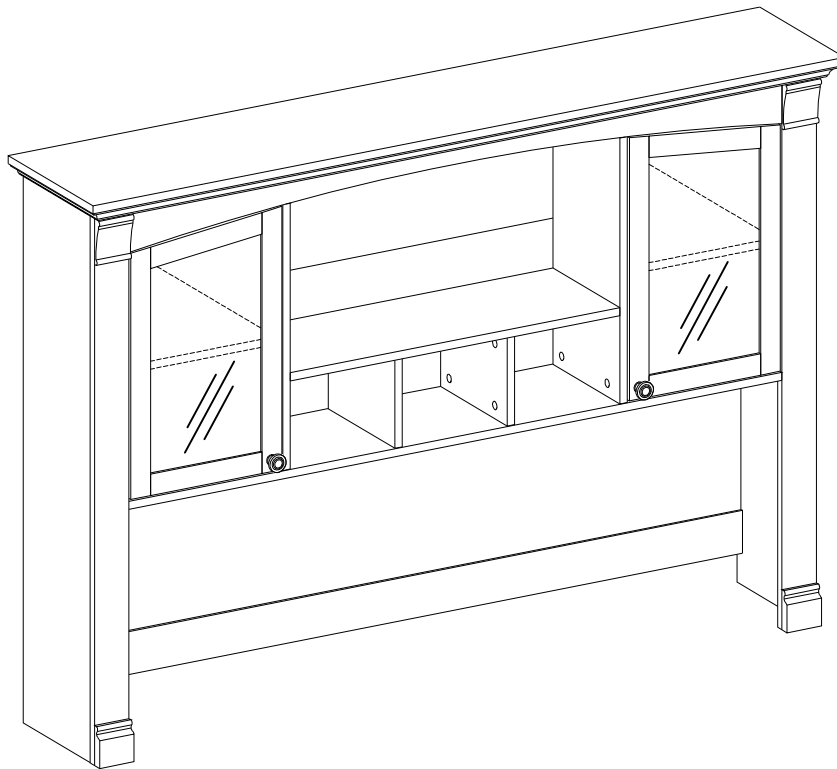


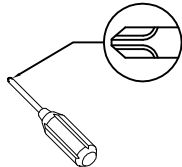
# RPCHTC

## Assembly Instructions

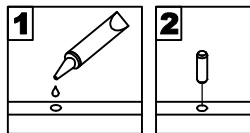


# General Assembly Guidelines

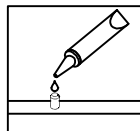
- I. Ensure that all parts and hardware are available before beginning assembly.
- II. Follow each step carefully to ensure the proper assembly of this product.
- III. Two people are recommended for ease in the assembly of this product.
- IV. A Phillips head screwdriver is required for the assembly of this product .



- V. The provided glue is to secure wood dowels in place . When first inserting dowels , locate the appropriate hole for the dowel , place a small amount of glue in the hole and insert the dowel . Wipe away excess glue immediately.

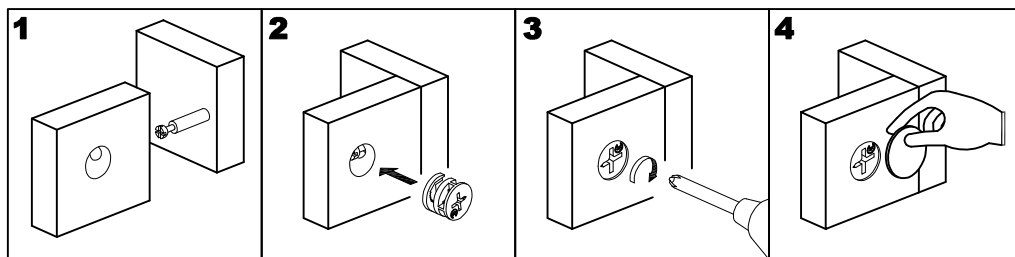


In future assembly steps when dowels are necessary to attach assembly parts together , place a small amount of glue on the end of the dowel before attaching parts together . Wipe away excess glue immediately.

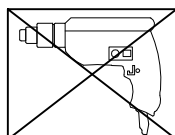


## VI HOW THE KNOCK DOWN (KD) ASSEMBLY SYSTEM WORKS

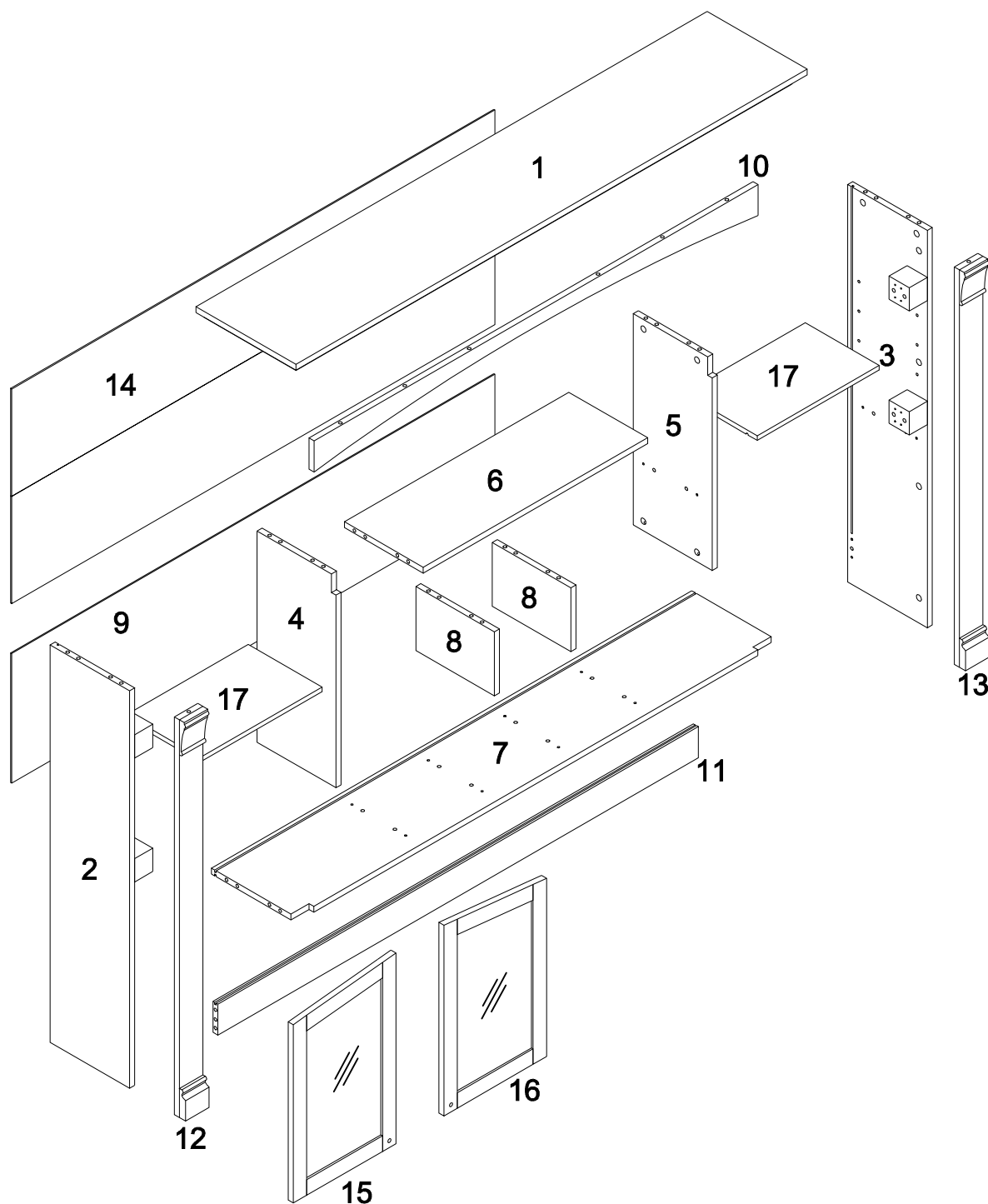
- 1.Screw the Cam Bolt into the pre-drilled hole on the panel. Make sure Cam Bolt goes into the pre-drilled hole on the end of panel for Cam Lock.
- 2.Insert the Cam Lock into the pre-drilled large hole on the panel. Make sure the arrow on the face of Cam Lock points towards Cam Bolt.
- 3.Take a Phillips screwdriver and rotate the Cam Lock clockwise to lock the Cam Bolt.
- 4.Use the sticker to conceal the Cam.




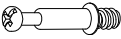


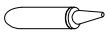
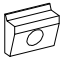

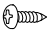





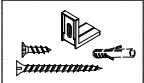


- VII. Power tools should not be used to assemble this product .

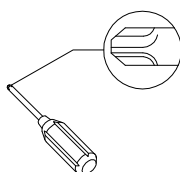


# Parts List



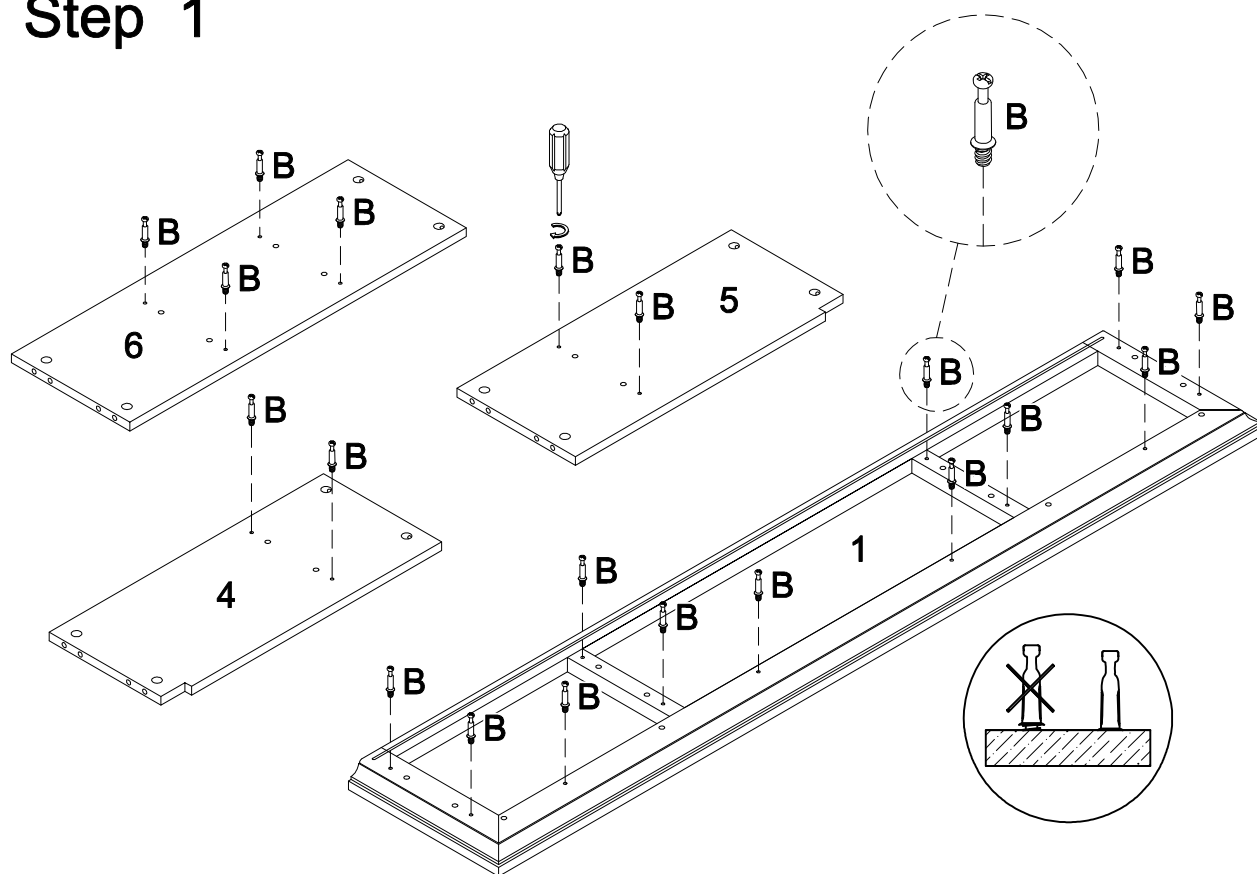
# Hardware List

|   |   |            |                            |        |
|---|---|------------|----------------------------|--------|
| A |    | Ø8x30mm    | Dowel                      | 42 pcs |
| B |    | Ø6x35mm    | Cam bolt                   | 44 pcs |
| C |    | Ø15x11mm   | Large Cam lock             | 44 pcs |
| D |    | Ø30mm      | Cam cover                  | 44 pcs |
| E |    |            | Glue tube                  | 1 pc   |
| F |    |            | Plastic wedge              | 28 pcs |
| G |    | Ø3*17mm    | Screw                      | 28 pcs |
| H |   | Ø3*12mm    | Screw                      | 8 pcs  |
| K |  | Ø26        | Hinge                      | 4 pcs  |
| L |  | Ø3.5*14mm  | Screw                      | 24 pcs |
| M |  | 5/32"x19mm | Bolt                       | 2 pcs  |
| N |  |            | Handle                     | 2 pcs  |
| O |  | Ø5*16mm    | Shelf Pin                  | 8 pcs  |
| P |  |            | Tipping Restraint Hardware | 2 sets |
| Q |  | 90*90*2mm  | L-bracket                  | 2 pcs  |
| R |  | Ø4*25mm    | Screw                      | 8 pcs  |

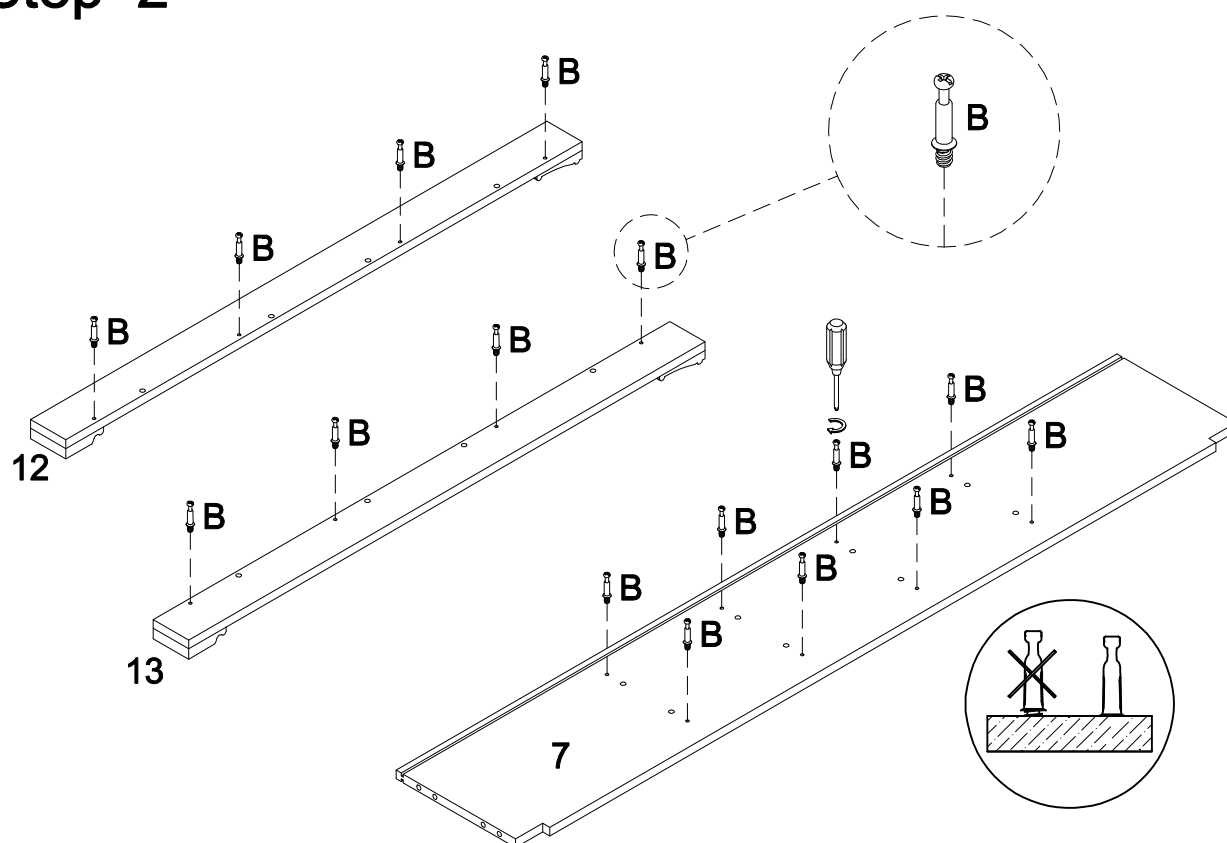


Philips head screwdriver required for assembly  
(not included)

## Step 1

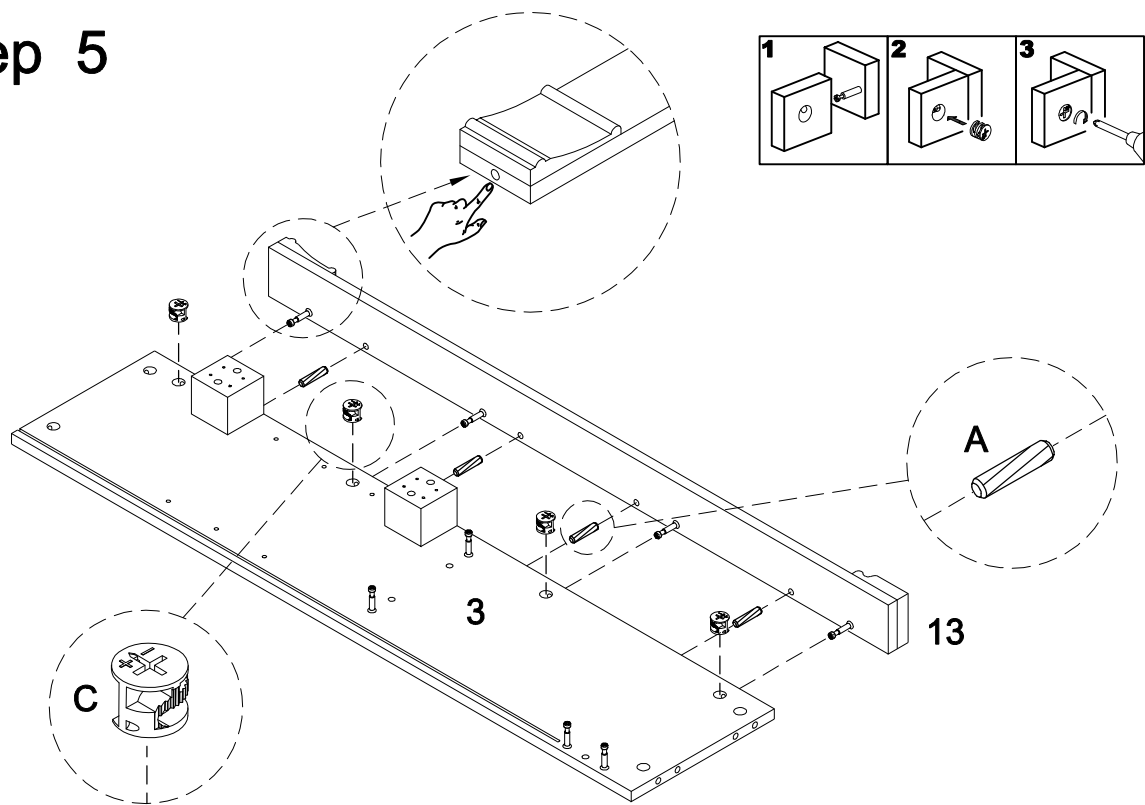


## Step 2

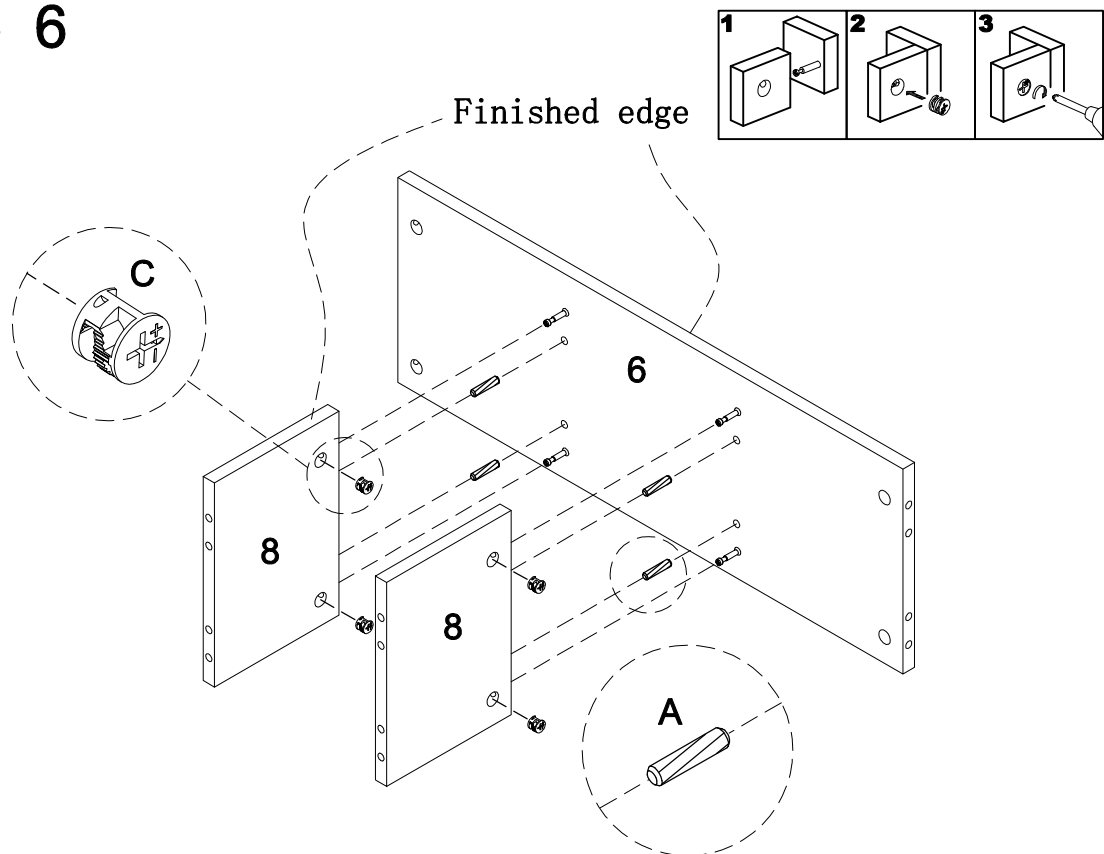


# Step 4

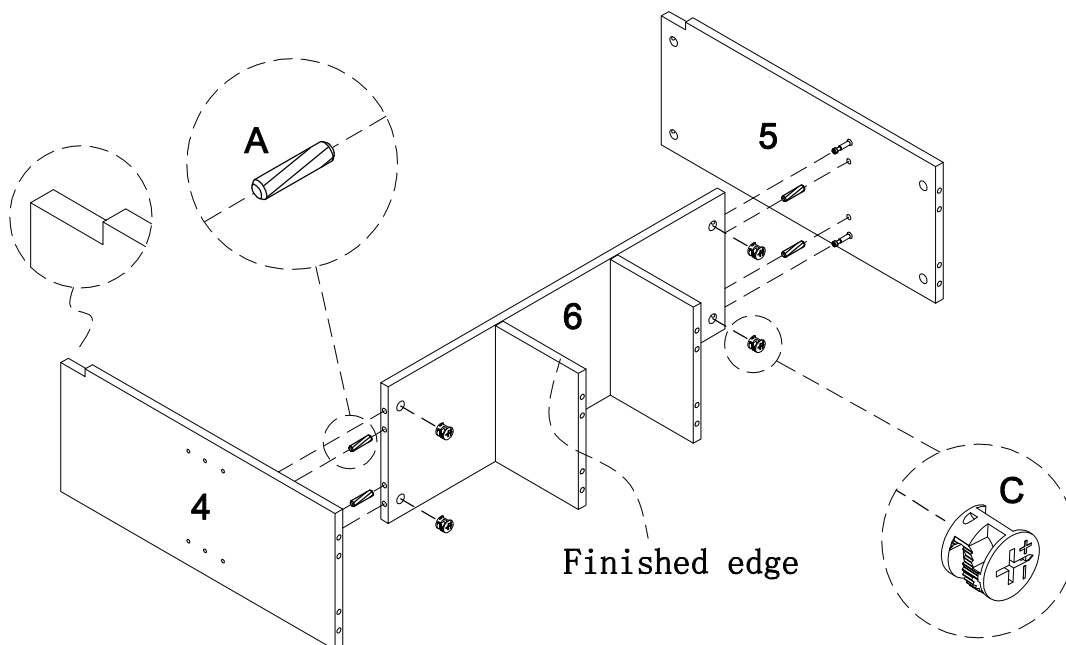
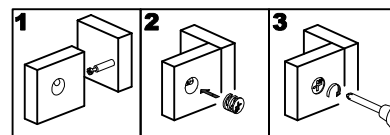
## Step 5



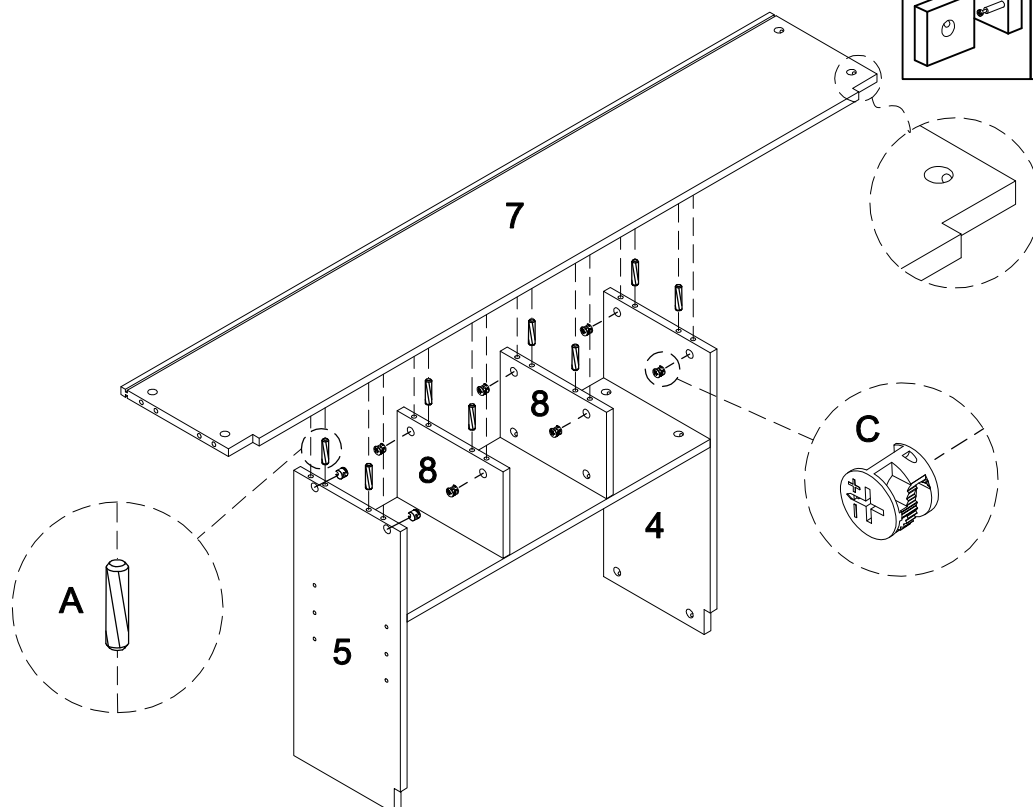
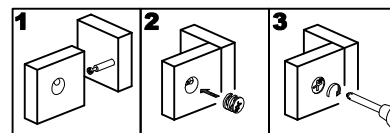
## Step 6



## Step 7

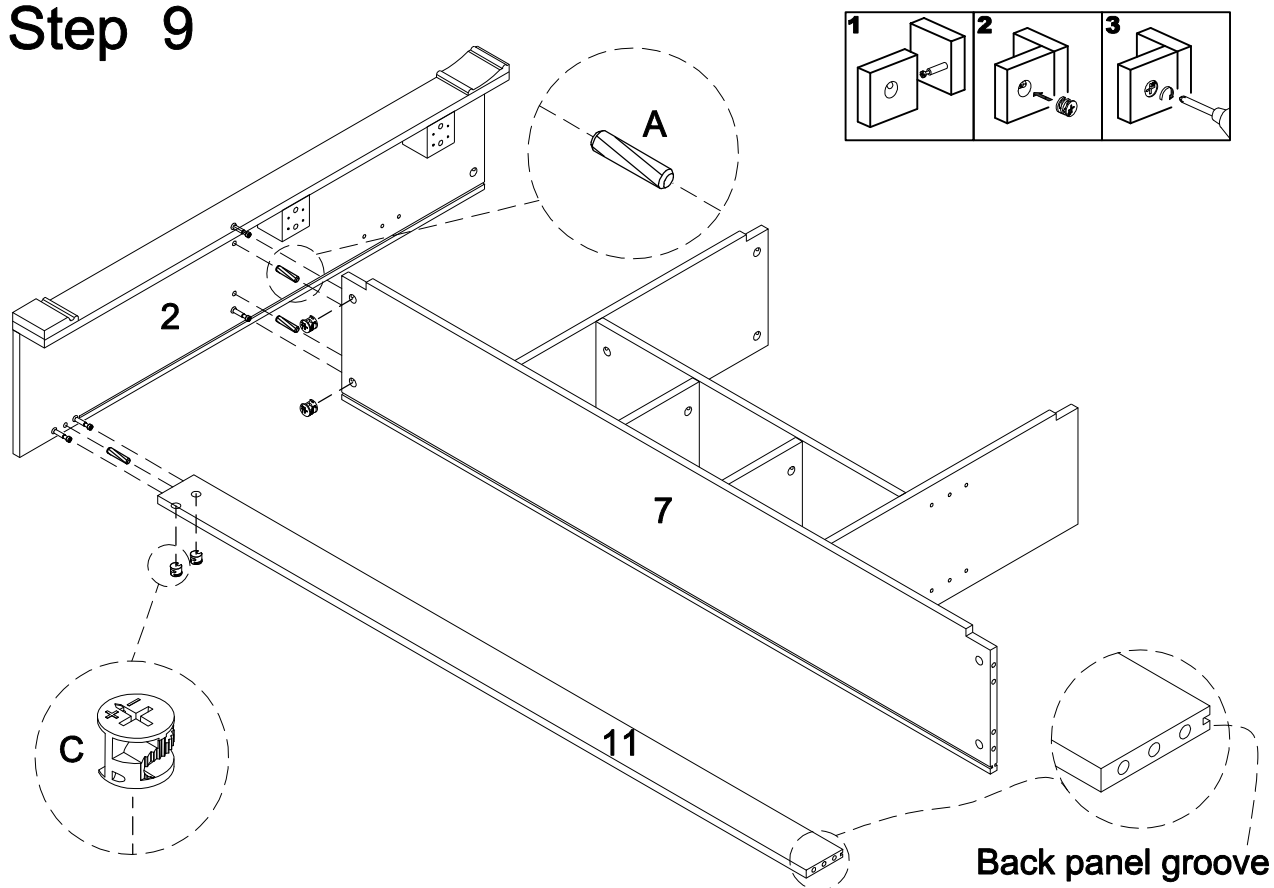


## Step 8

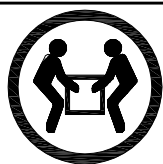
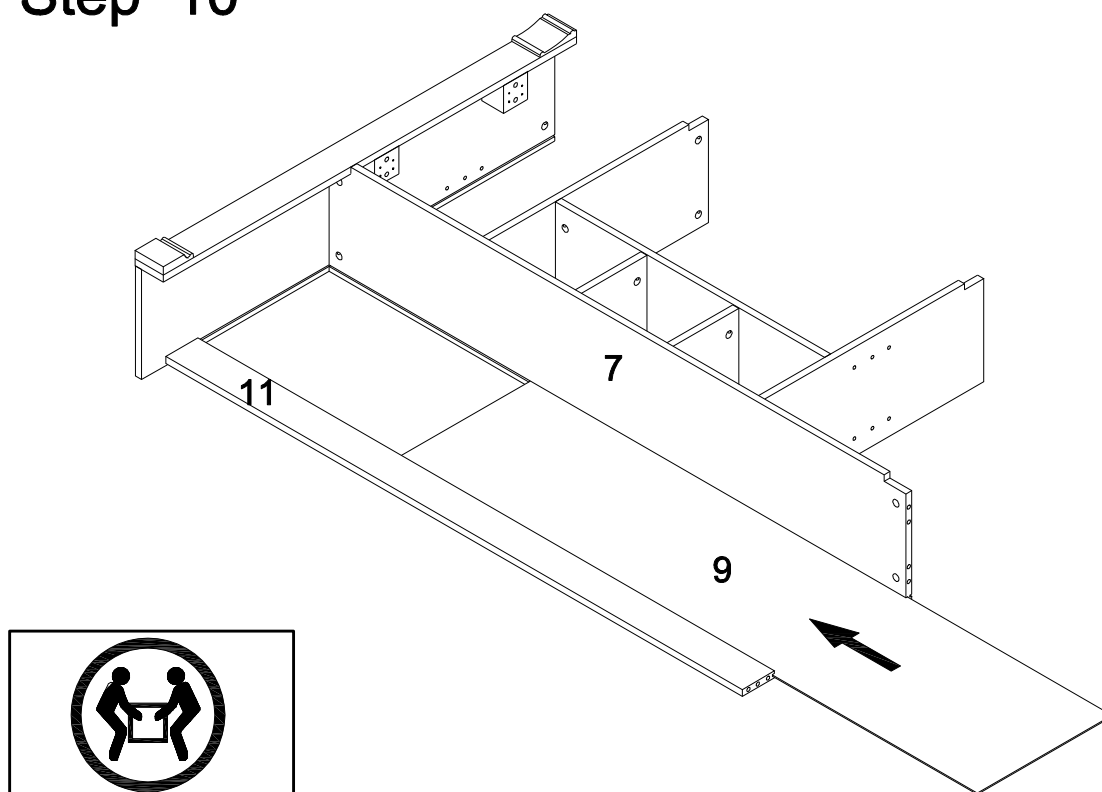




## Step 9

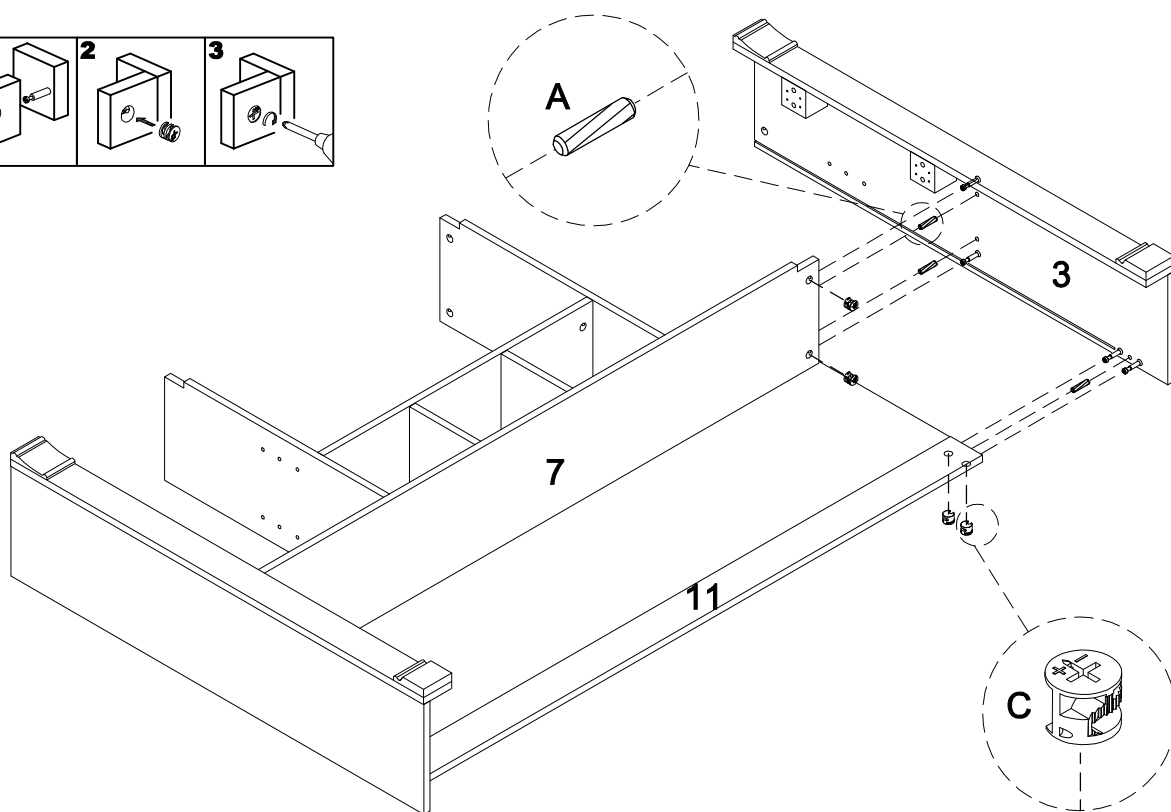
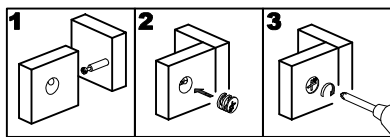


## Step 10

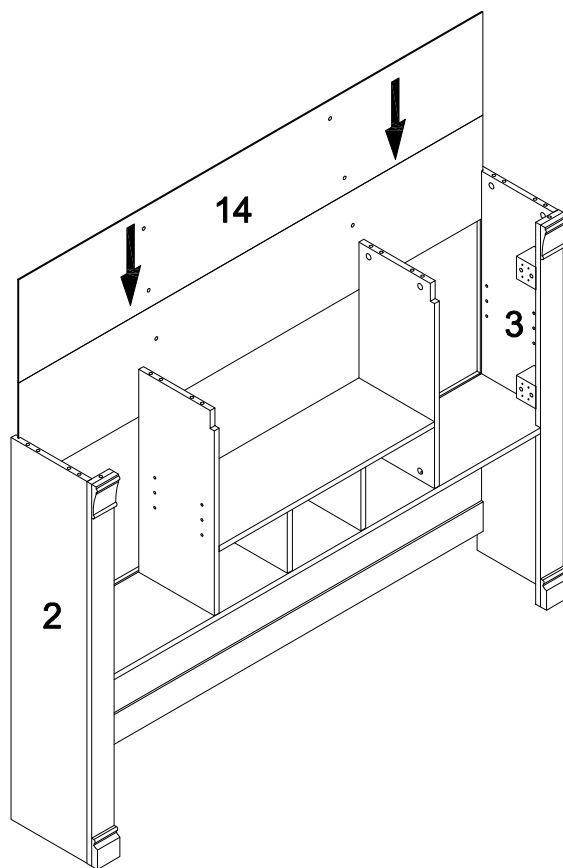


**CAUTION: Heavy!** You may need assistance with this step.

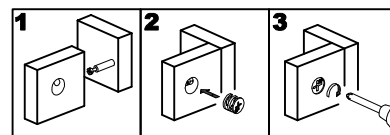
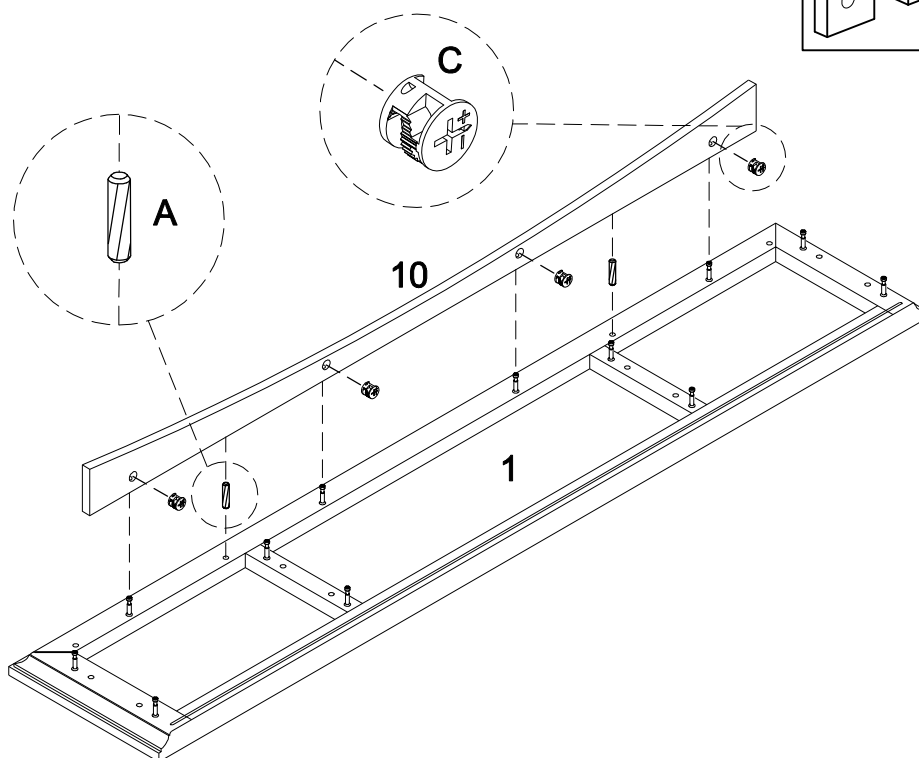
## Step 11



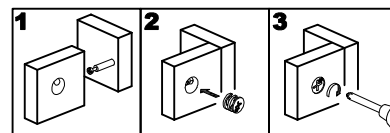
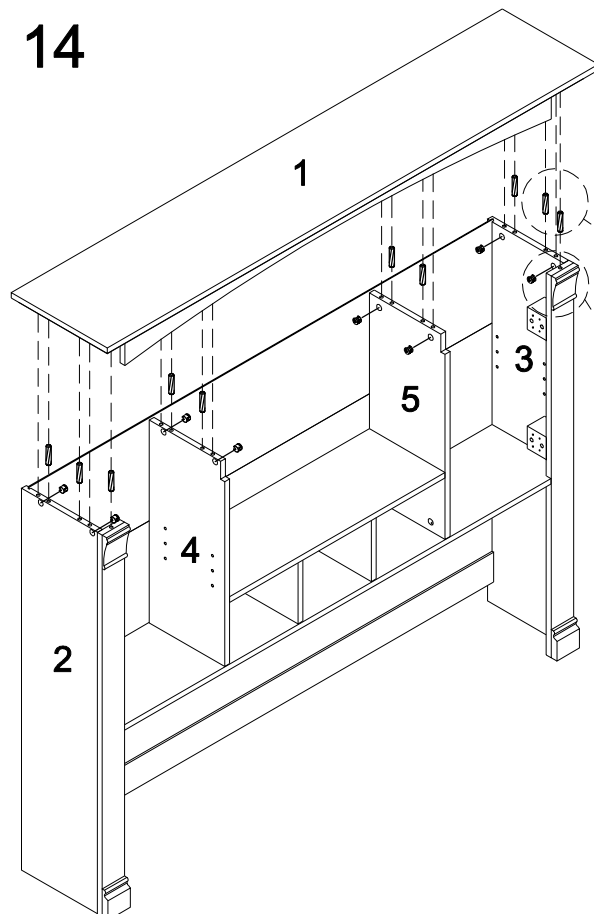
## Step 12



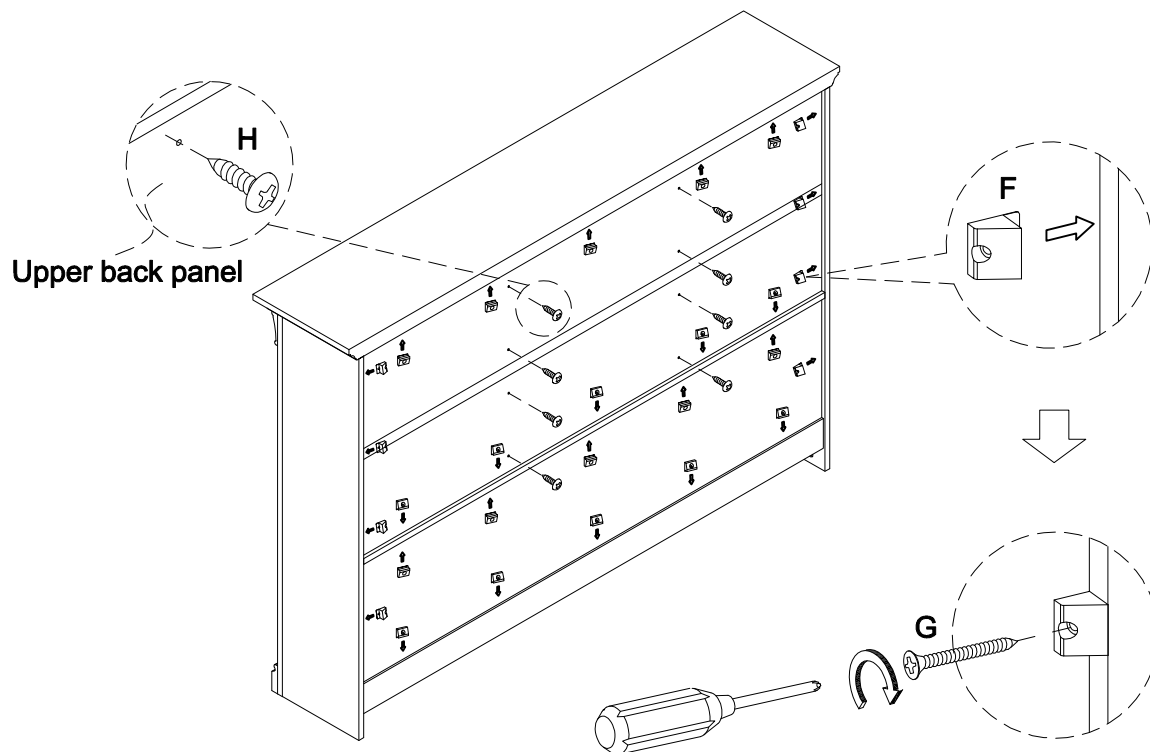
## Step 13



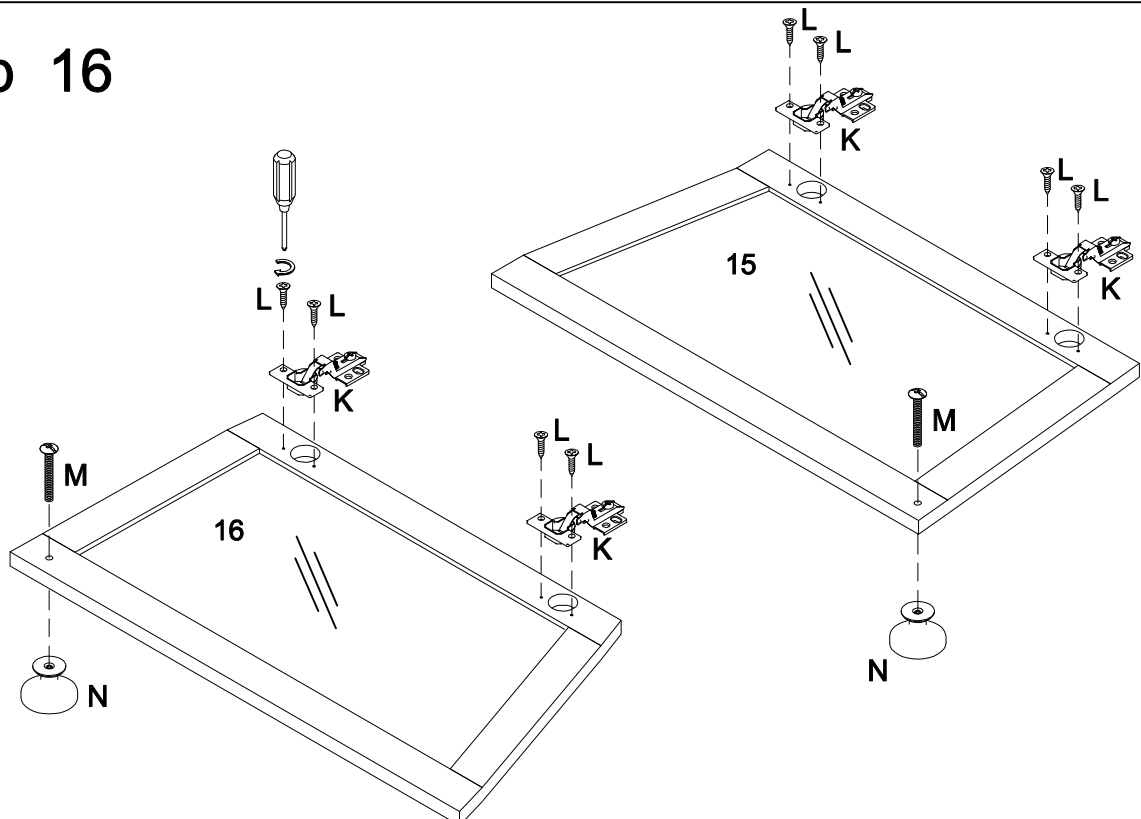
## Step 14



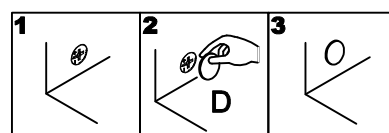
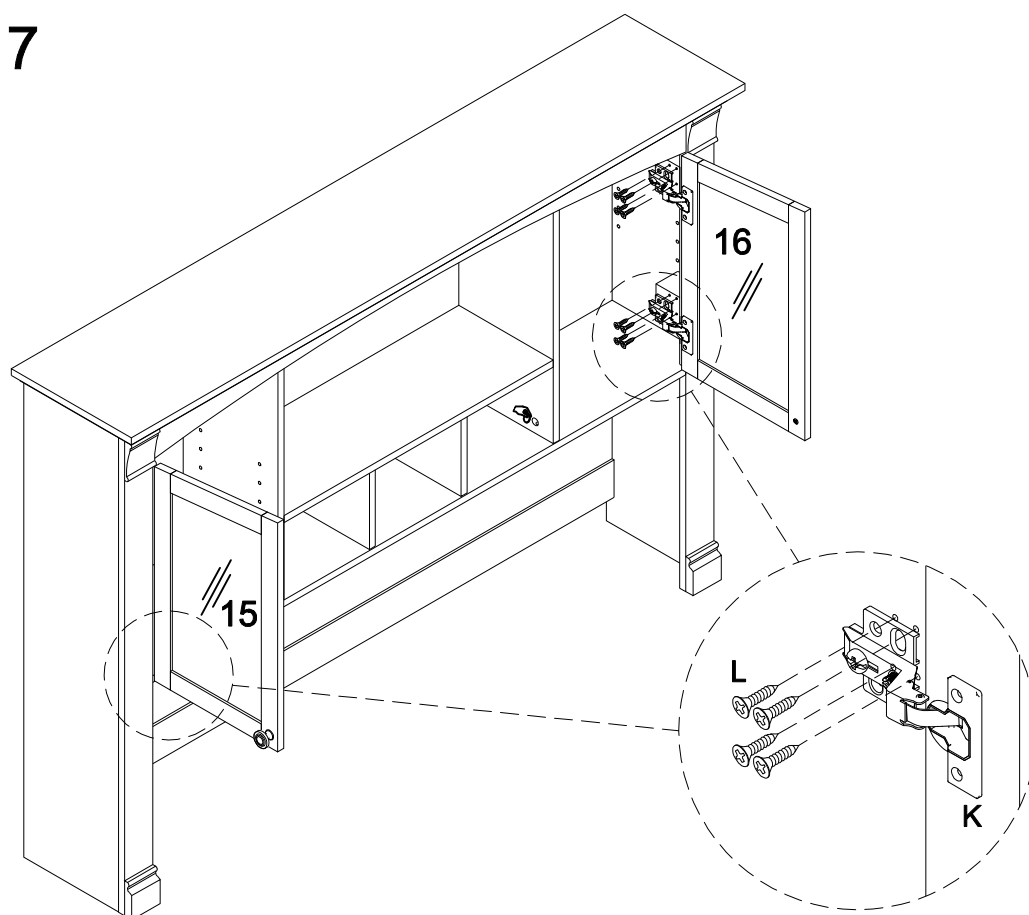
## Step 15



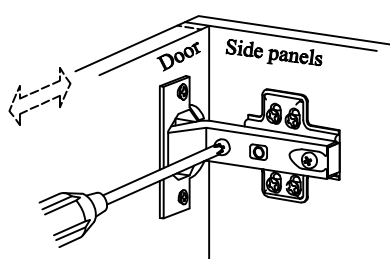
## Step 16



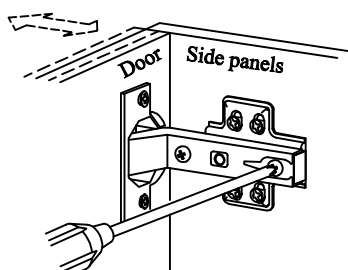
## Step 17



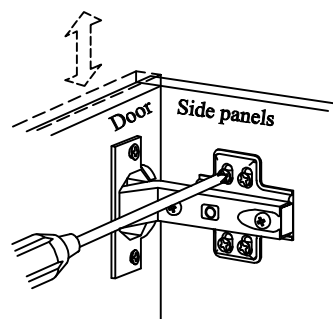
Concealed hinges are three-way adjustable.



**Horizontal**  
by screw adjustment

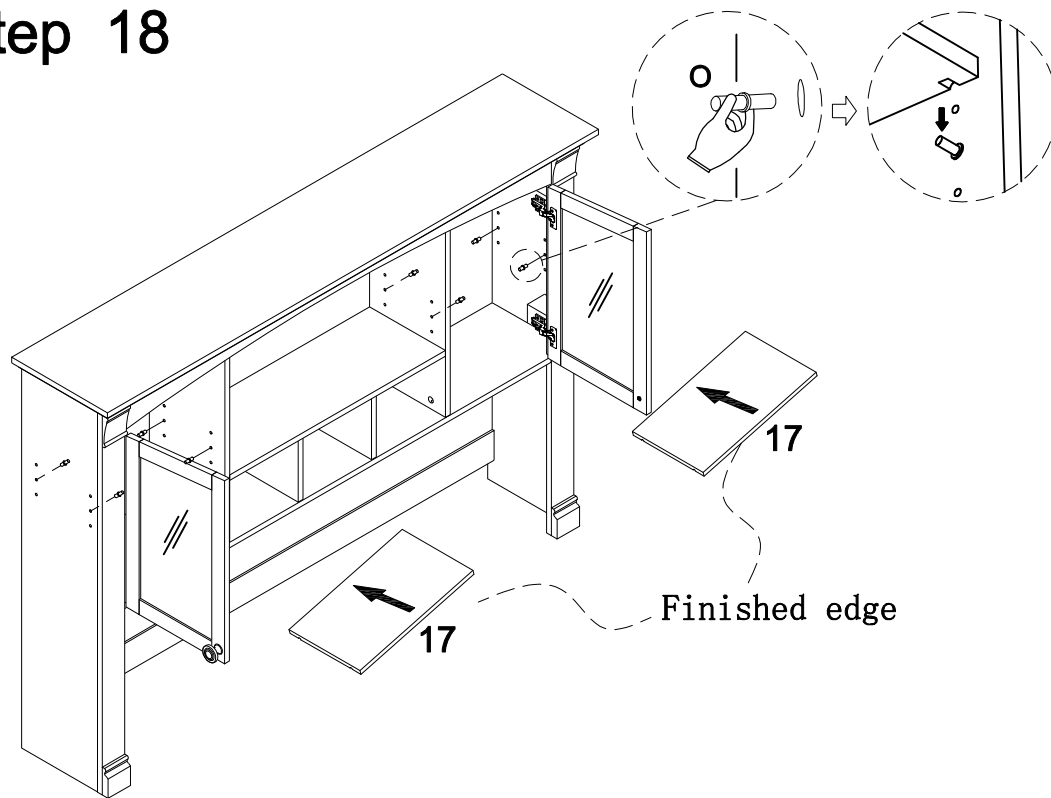


**In-and-Out**  
by loosening the hinge-arm  
mounting screw or via cam  
adjustment

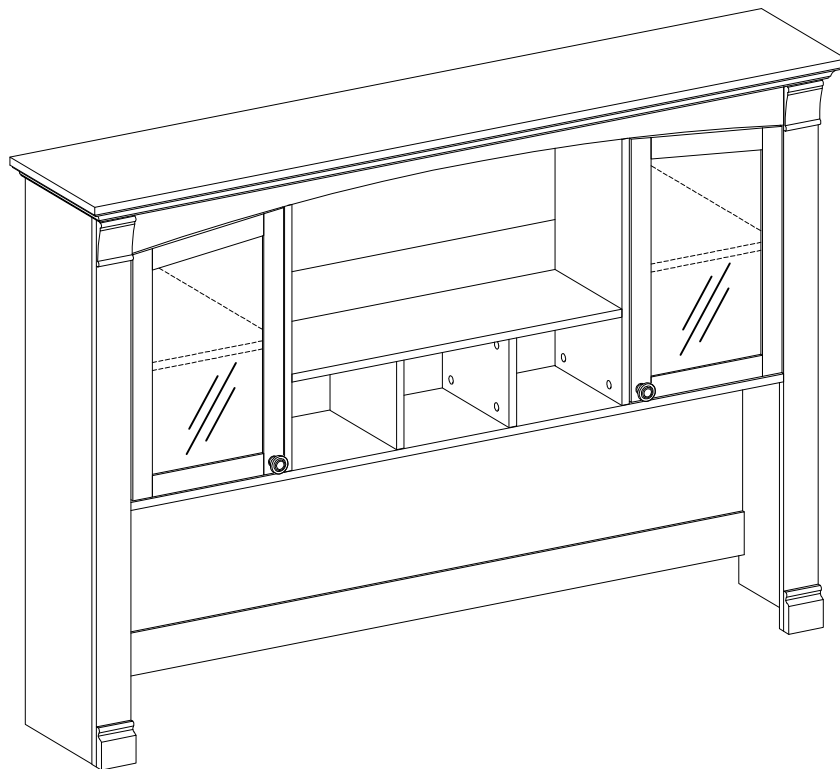


**Vertical**  
Via slots in the mounting  
plate or via cam adjustment

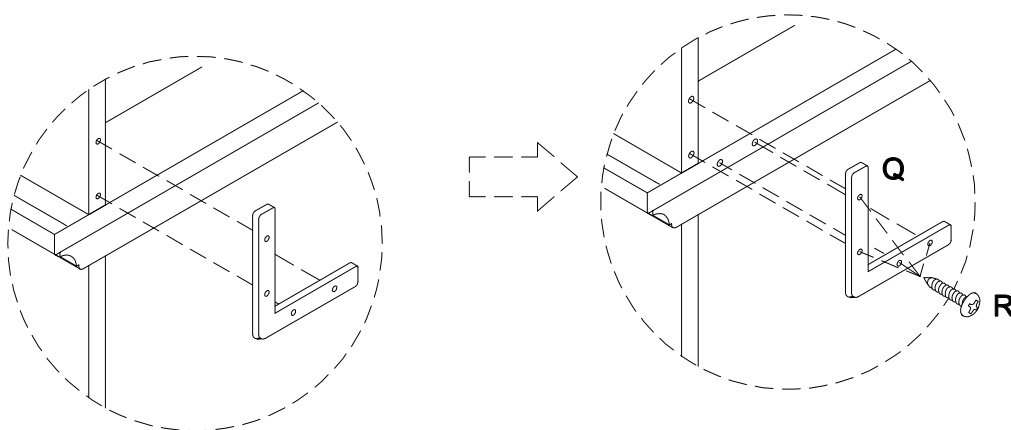
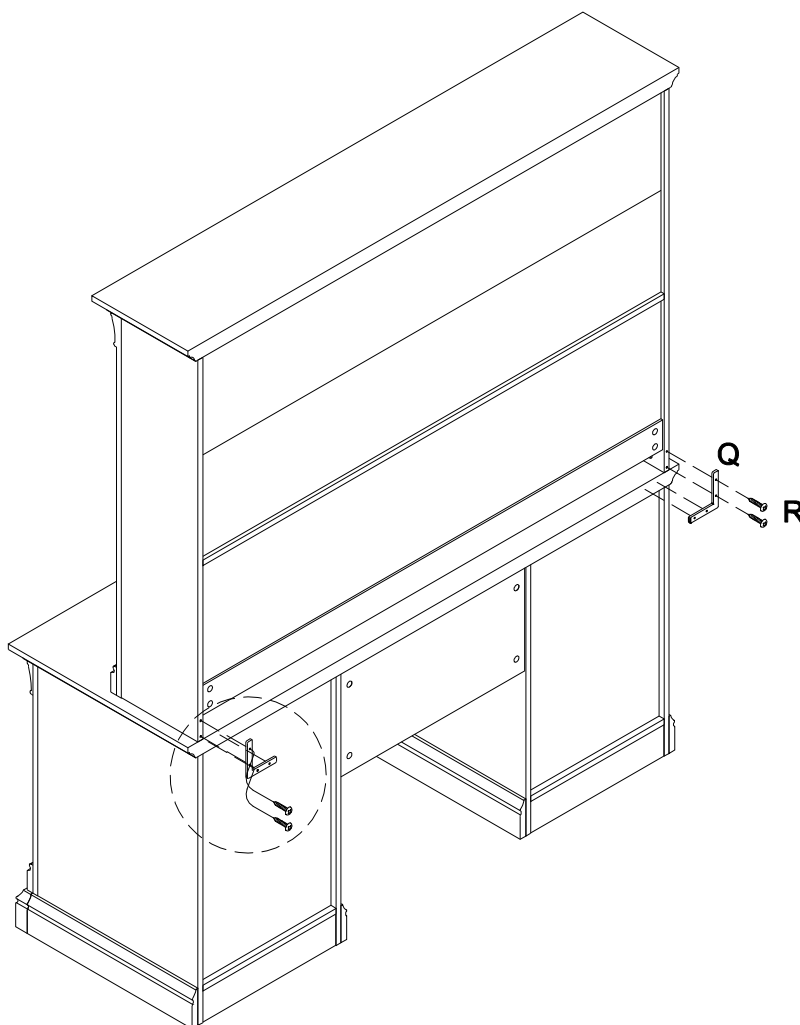
## Step 18



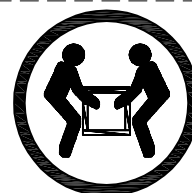
## Step 19



## Step 20

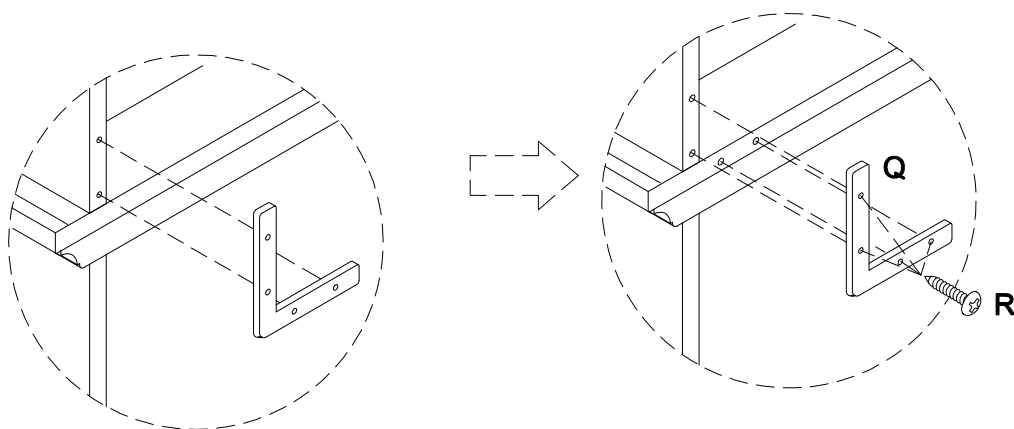
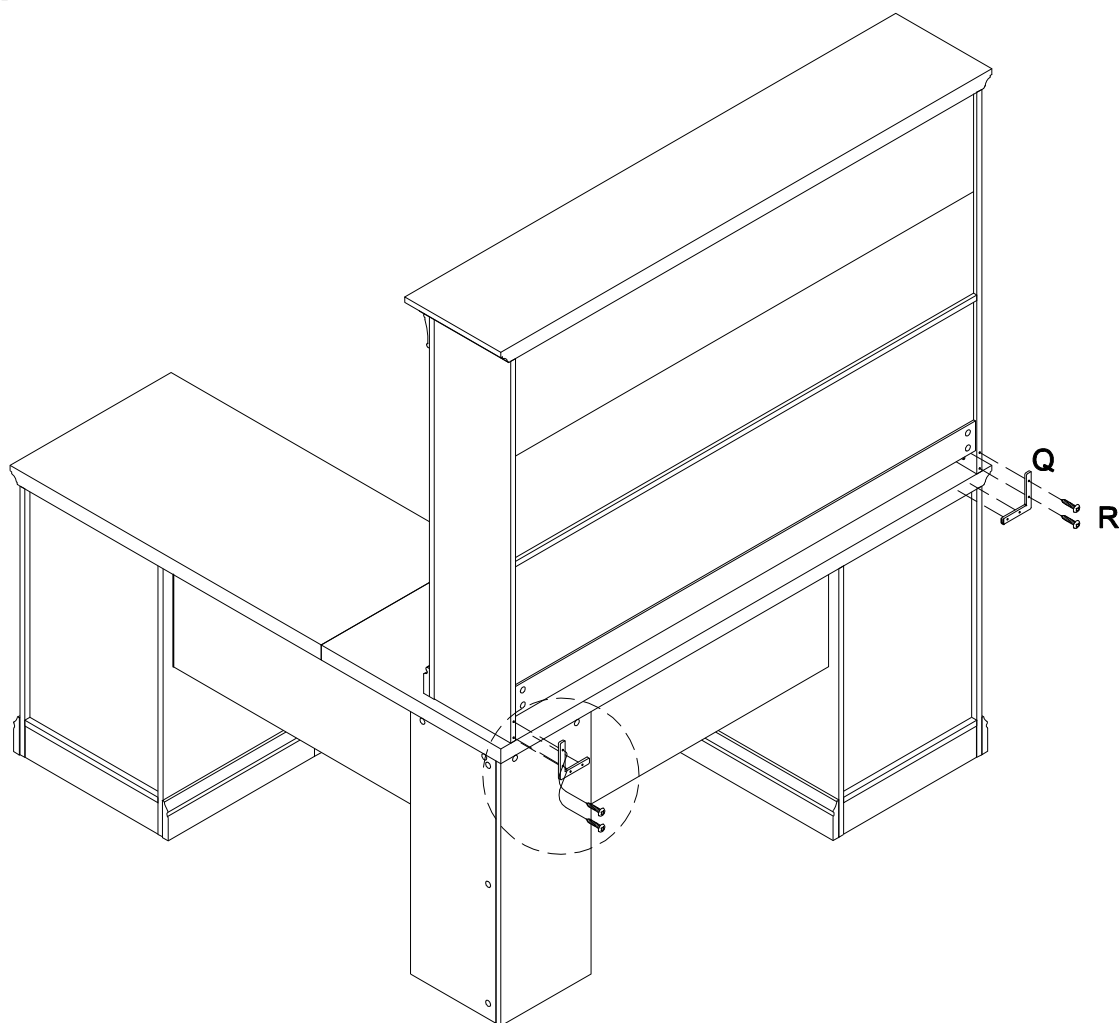


Drill  $\text{Ø}1/8" \times 1/2"$  pilot hole at the back of Desk top for attaching L-brackets is recommended

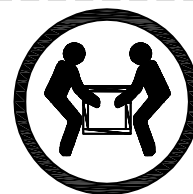


**CAUTION:** Heavy! You may need assistance with this step

## Step 21



Drill  $\text{Ø}1/8" \times 1/2"$  pilot hole at the back of Desk top for attaching L-brackets is recommended

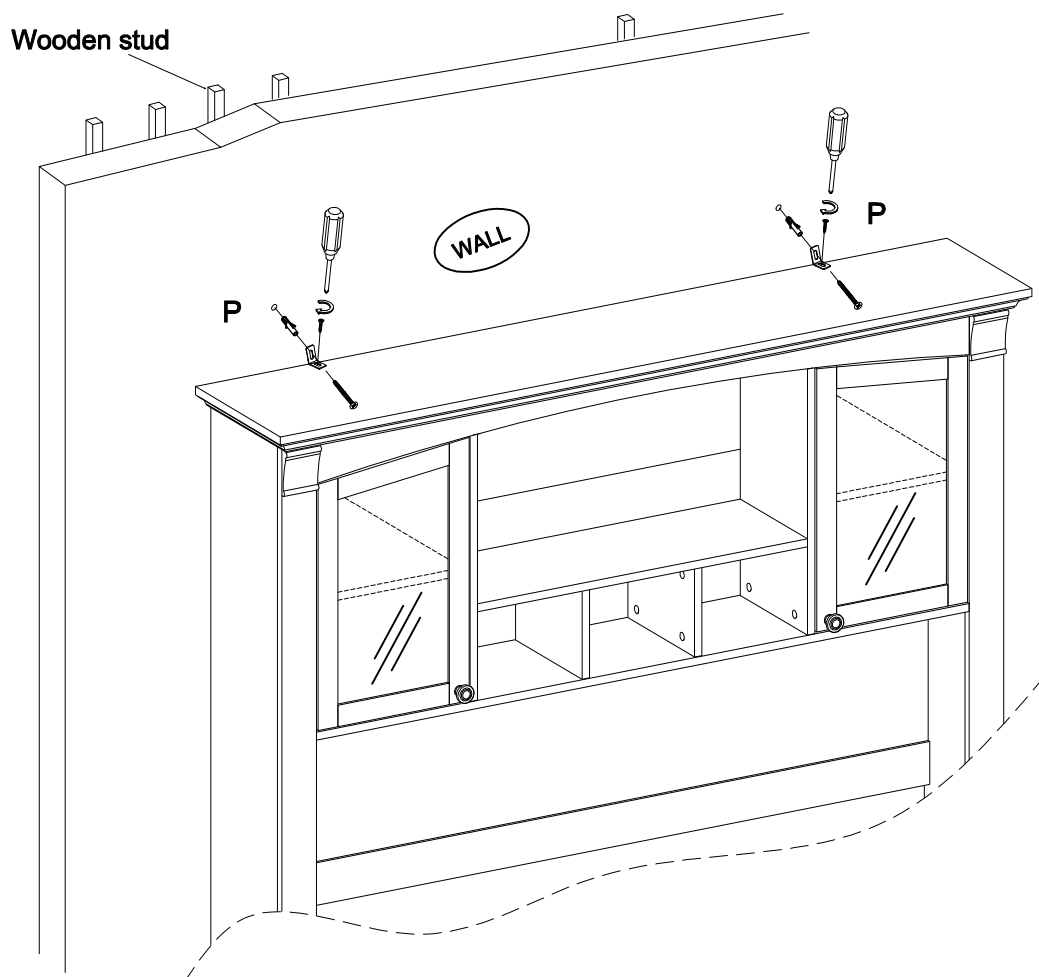
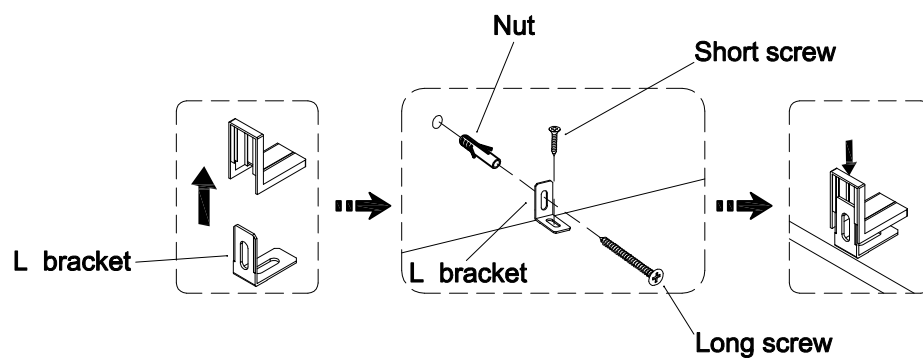


**CAUTION:** Heavy! You may need assistance with this step



## Step 22

Serious or fatal injuries can occur from furniture tipping over. To prevent the furniture from tipping over we recommend that it is permanently fixed to the wall. Wall anchor and hardware are included with this product. Please make sure hardware is suitable for your walls before installing, as different wall materials may require different types of anchors.



**Final Assembly**