

KITCHEN FAUCET INSTALLATION GUIDE

Unpack and inspect your sink upon delivery to avoid costly contractor delays.

Tools you will need



Phillips Screwdriver



Safety Goggles

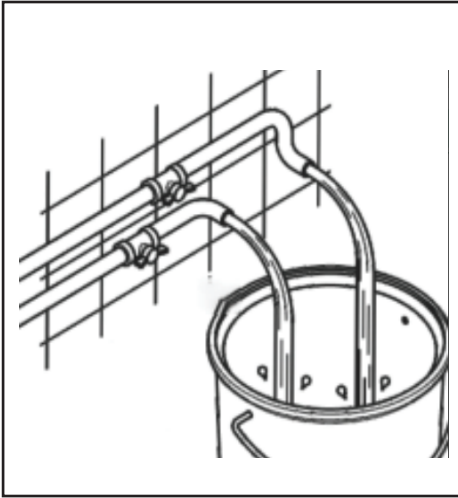


Silicone Sealant

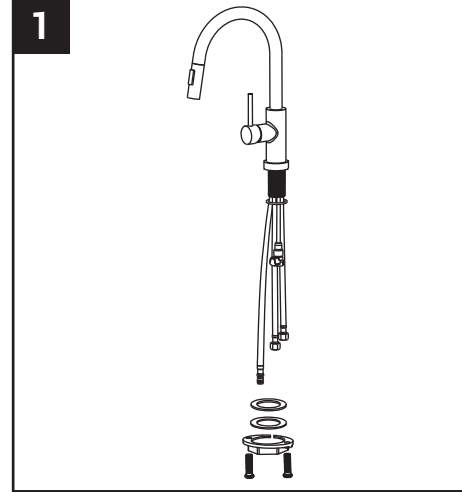


Adjustable Wrench

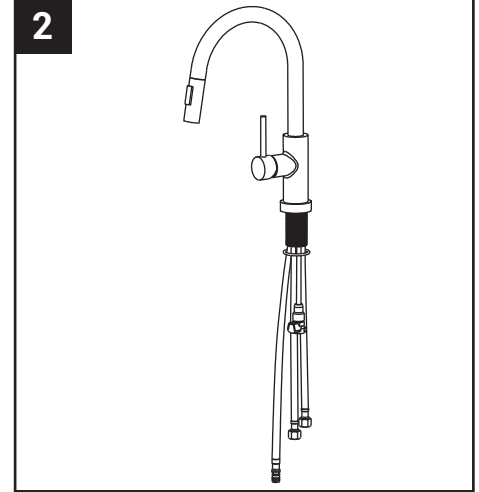
Pull down Faucet Installation Procedure



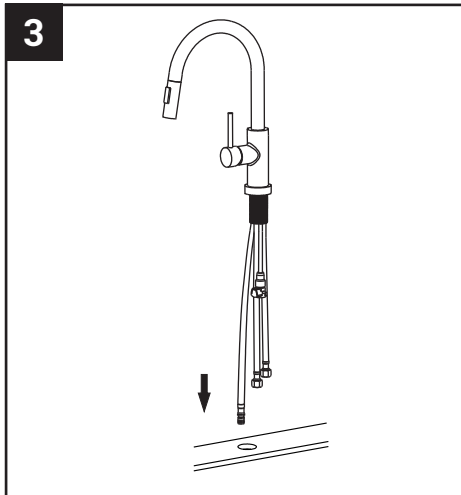
Before installation, please clear the impurities in the water pipe to avoid blockage.



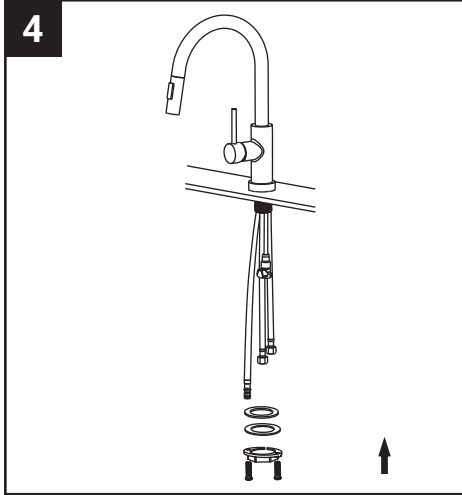
Step 1: Remove mounting hardware:
Remove the mounting screws, mounting nut, and rubber and metal washer from the mounting pipe.



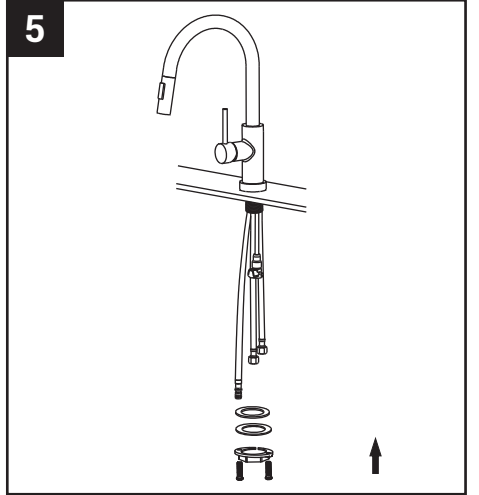
Step 2: Faucet installation For three-hole installation: Install deck plate, base plate, and silicone sealant (optional).
For single-hole installation: Install base plate.



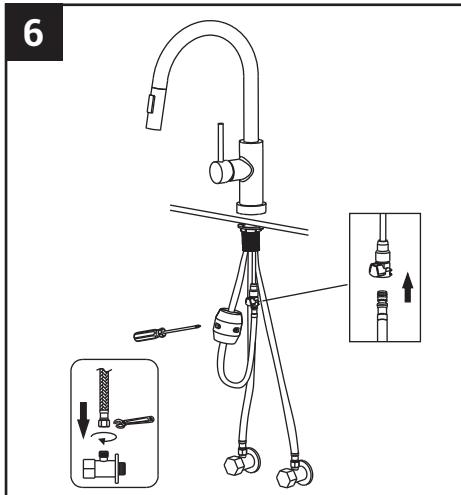
Step 3: Install faucet body:
Insert faucet body into hole in countertop or deck plate. Pre-drilled hole size: 1-3/8" (min) -1-1/2" (max)
Max countertop thickness: 1-3/8".



Step 4: Install mounting hardware:
Install mounting hardware from underneath the countertop to the faucet.



Step 5: Secure mounting hardware:
Adjust direction of faucet body so that handle is on right side of faucet. Tighten mounting nut and mounting screws with Phillips screwdriver until snug.

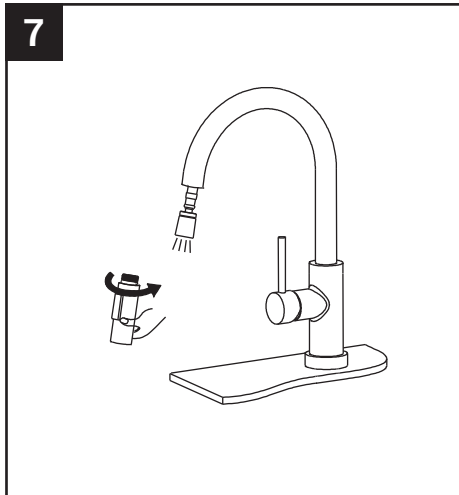


Step 6: Attach spray hose and counterweight

Connect spray hose and install weight on lowest vertical point on spray hose

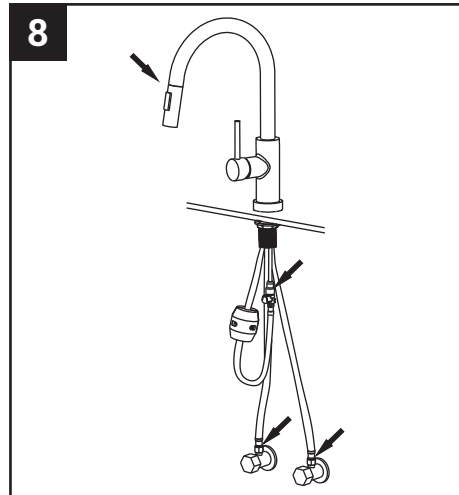
Counter waterlines

Connect waterlines to angle stops. Tighten both ends of waterlines with a wrench until snug. Turn on hot and cold angle stops and check for leaks



Step 7: Flush spray hose:

Remove spray head from spray hose. Hold tip of spray hose. Turn faucet on and let the water run for 60 seconds to flush any debris.



Step 8: Check for leaks:

Check for leaks at the connections. Retighten if necessary.

Precautions

1. After opening the product packaging, please refer to the accessories listed in the FAUCT ACCSSORIS to check if the spare parts are complete. If there are any defects, please contact the merchant immediately.
2. The installation size of the purchased faucet should match the installation size of the pre embedded inlet pipe
3. The core part of the main groups faucet has been tested and debugged by the factory. Please do not disassemble or assemble it yourself
4. Before installing the faucet, please be sure to remove impurities and sludge from the pre embedded water pipe to avoid blockage and affect the water outlet function.
5. After installation, please turn on the water source and check if all connections are tight to ensure there are no leaks.

Care & Maintenance

To keep the product clean & shining, follow the steps below.

1. Rinse with clean water & dry with a soft cloth
2. Do not clean with soaps, acid polish, abrasives, or harsh cleaners
3. Do not use cloth with a coarse surface
4. Unscrew the aerator and clean when necessary



Our company has the right to modify the dimensions and configurations related to the product. There may be differences between the actual product and the size configuration diagram.