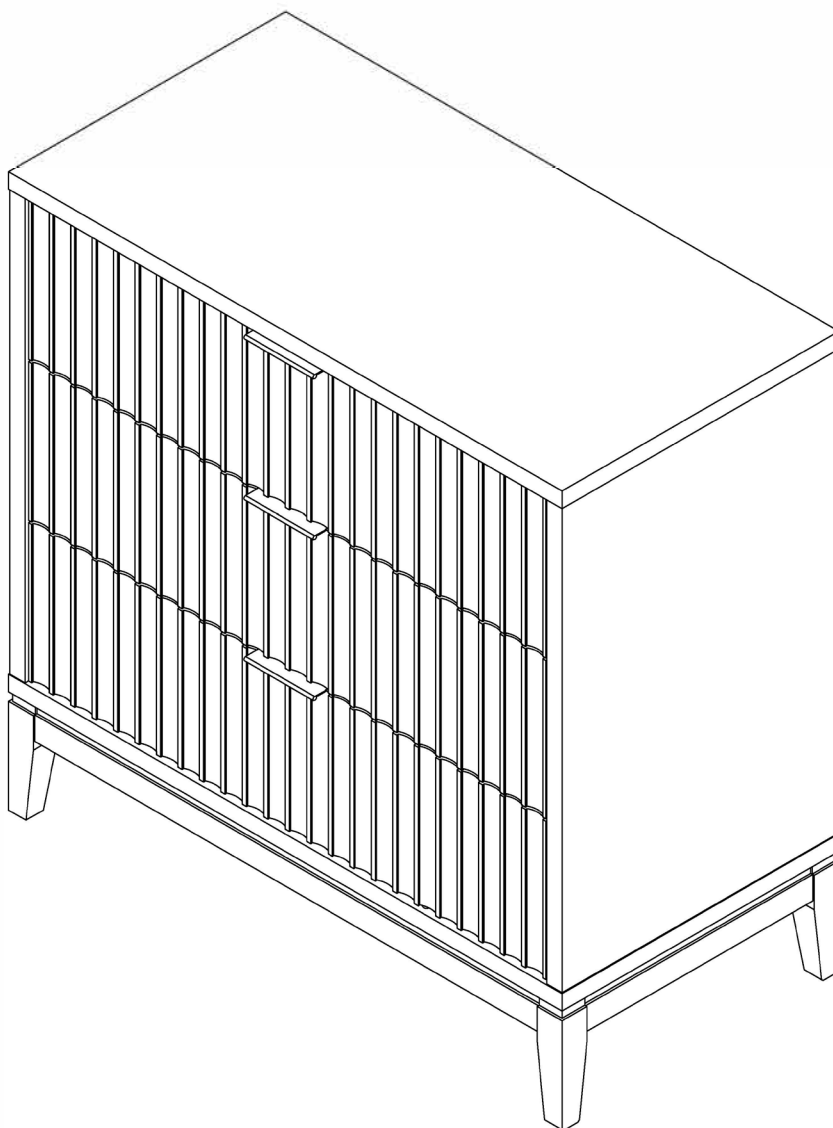


Let's build the

Jasper Dresser

SKU 71802



Scan me!

Free Lifetime
Warranty

nathan james

25-0623 -VN

Ok, let's get rolling

This should be easy, just follow our instructions and you will be back to Netflix in no time.

Estimated time for assembly

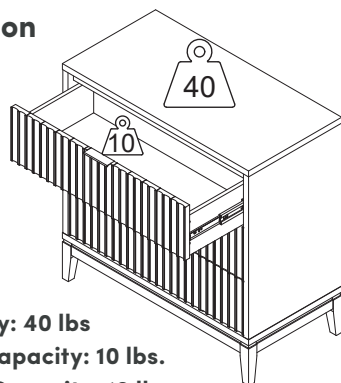


30:00

What you need

- Phillips-head screwdriver
- Some of your favourite bubbly or your preferred relaxant
- Use the packaging carton as a working surface to prevent product damage during assembly
- 1/4" Drill Bit.

Weight Limitation



Top Max. Capacity: 40 lbs

Top Drawer Max. Capacity: 10 lbs.

Mid. Drawer Max. Capacity: 10 lbs.

Bottom Drawer Max. Capacity: 10 lbs.

Toll-free at 1-866-619-1004

Help@nathanjames.com

Nathanjames.com/help

What's included

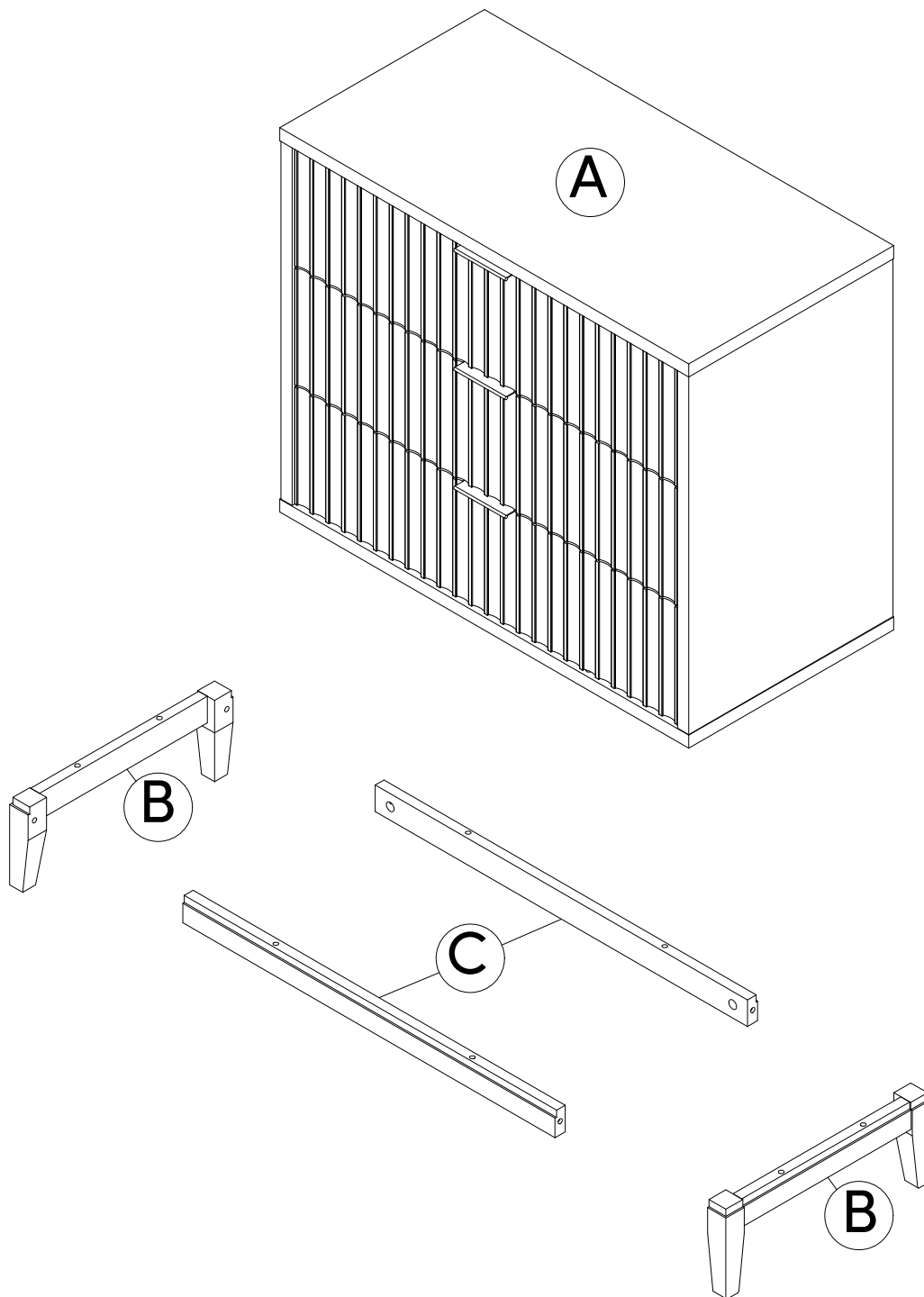
Description		Qty
A	Cabinet Assembly	1
B	Side Leg Frame	2
C	Stretcher	2

Scan me!

Free Lifetime
Warranty



The goods



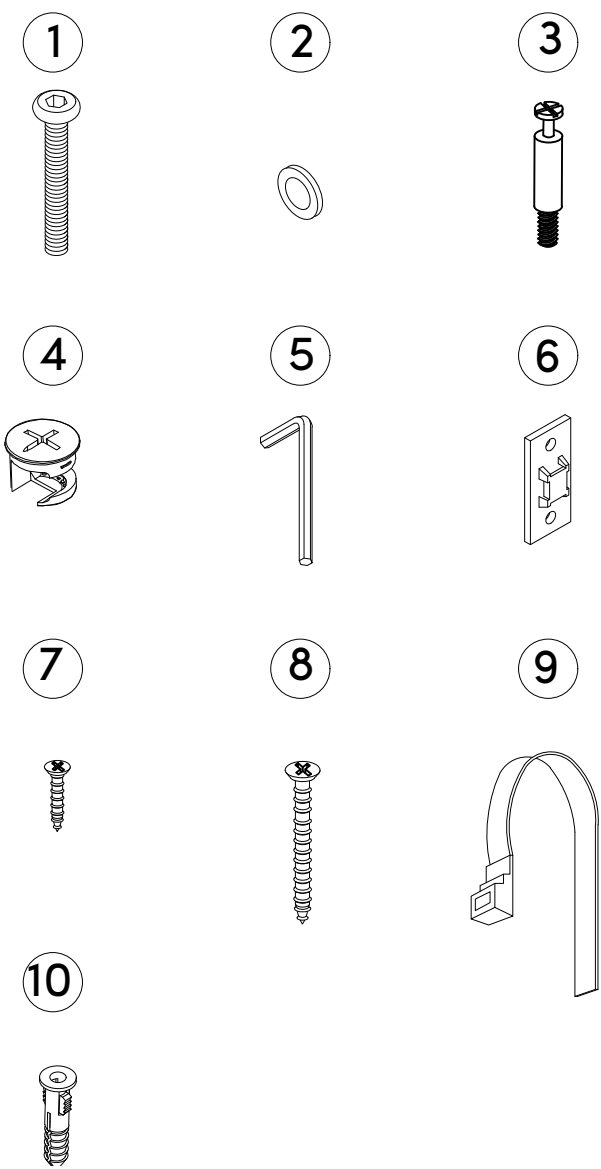
IMPORTANT

1. Do not tighten bolts / screws completely until all bolts / screws are lined up and inserted into holes.
2. Do not over tighten screws and bolts to avoid stripping.

What's included

Description		Qty
1	1/4" x 55mm Hex Button Head Bolt	8
2	1/4" x13mm Flat Washer	8
3	M6 x 35mm Cam Bolt	4
4	15 x 10mm Cam Lock (Extra 1pc)	5
5	Allen Key	1
6	Plastic Bracket (for Anti-Tip Kit)	2
7	M3.5 x 14mm Screw	2
8	M4 x 50mm Screw	2
9	Plastic Strap (for Anti-Tip Kit)	1
10	Wall Anchor (for Anti-Tip Kit)	2

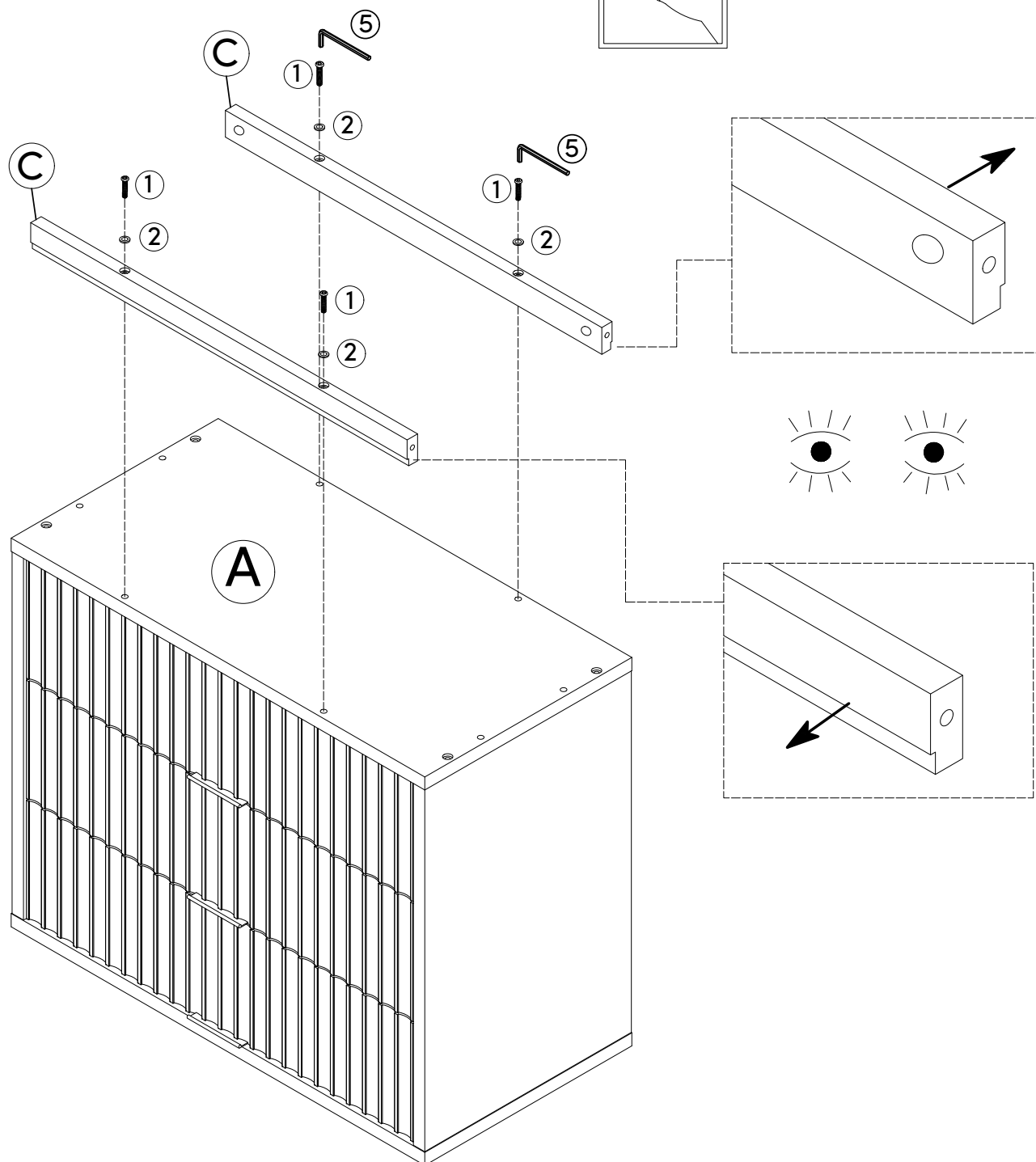
The goods



Step 1

Let's get this thing fired up!

First, slide one 1/4" x 13mm Flat Washer (2) onto each 1/4" x 55mm Hex Button Head Bolt (1). Next, align the Stretchers (C) with their respective holes on the bottom of the cabinet before finally using the flat washers + bolts to secure the Stretchers (C) in place on the bottom of the cabinet.



Step 2

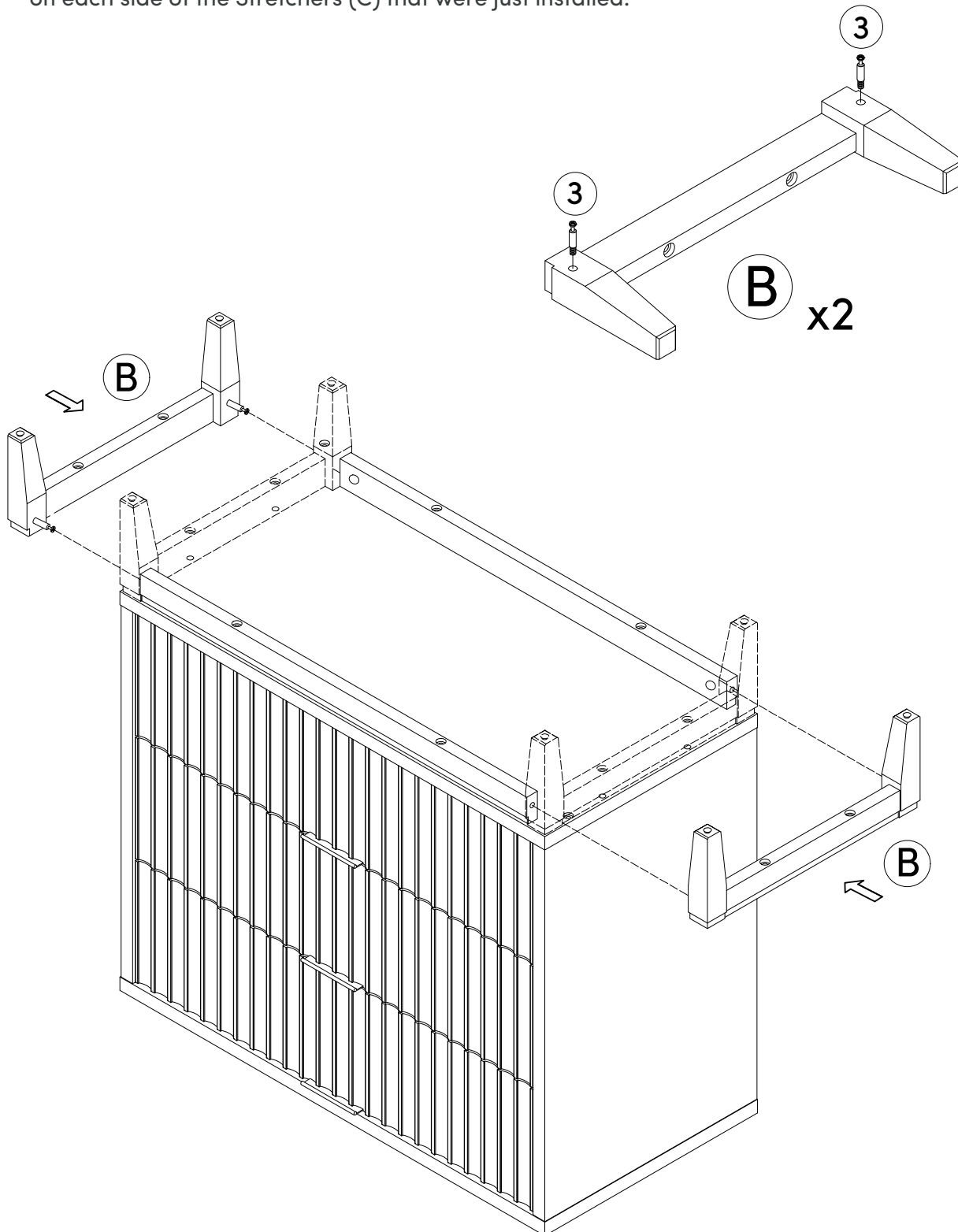
Screw two M6 x 35mm Cam Bolts (3) on to each of the Side Leg Frame (B).

Next, slide the Side Leg Frames (B) in to their respective holes on each side of the Stretchers (C) that were just installed.

3



x 4 pcs



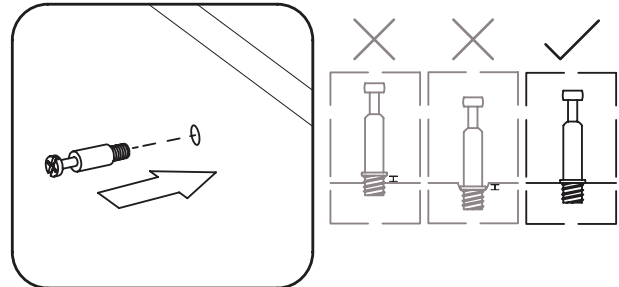
How to use cam locks

Did you know?

Cam locks are used to join two panels together, usually the edge of one to the flat side of another.

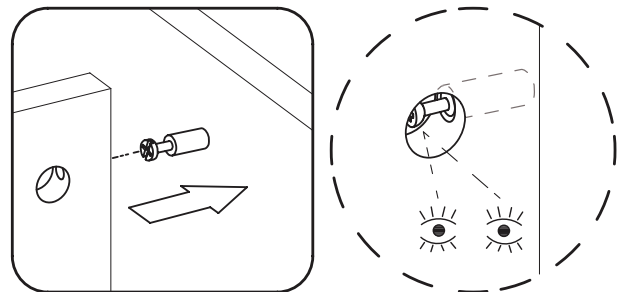
First, your cam bolt (or cam pin) will need to be properly inserted into the flat side of the board.

Important Note: Only tighten the cam bolt until it is secure. Do not over-tighten.



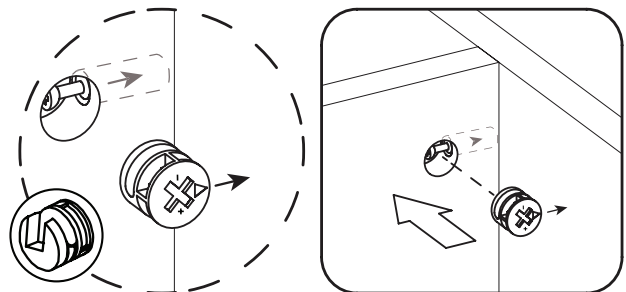
Next, you will fit the proper hole on the edge of the associated joining panel over the cam bolt.

Important Note: When installed properly, the head of the cam bolt will be visible through the larger hole on the side of the joining panel.



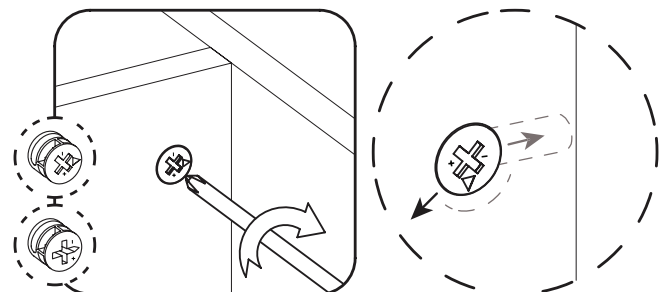
Next, you will notice the cam lock has a “C” shaped back. Commonly, an arrow on the front of the cam lock points in the same direction as the open section on back.

Using these as your cue, insert the cam lock into the large hole so the opening of the “C” fits over the head of the cam bolt.



Using a screwdriver, you will turn the cam lock until it stops, usually between 130° or 180°. You will feel the panels pulling closer until they are secured.

Important Note: Only turn the cam lock until the panels are fully engaged & feel secure. Turning too far may lead to hardware failure



Still having issues?

If a cam lock seems to be spinning in place or is not “catching” or pulling the panels together as expected, first remove the cam lock & try again while making sure that everything is properly positioned & oriented.

If you are still having issues getting things work ing as expected, first remove the cam lock then unscrew the cam bolt slightly (less than 1 complete turn) to see if that helps with the alignment of the cam lock & bolt.

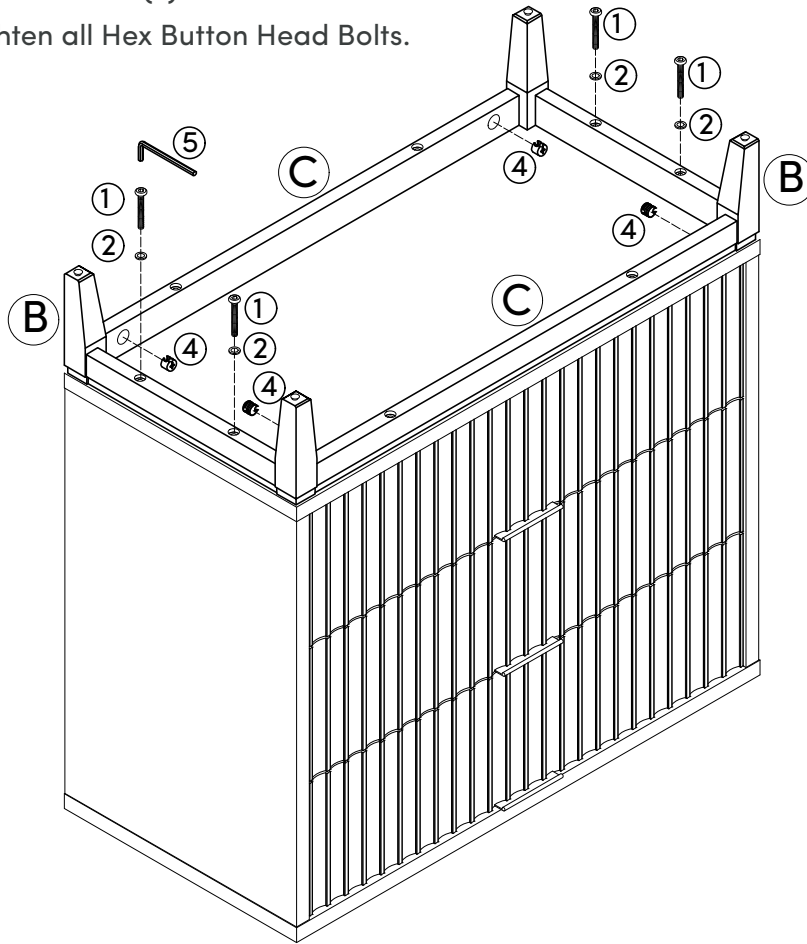
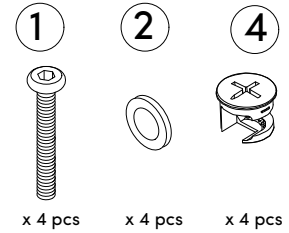
Step 3

Now it's time to secure the Side Leg Frames (B).

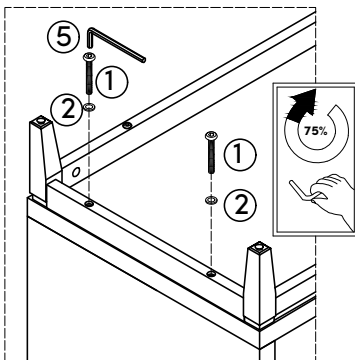
Begin securing the Side Leg Frames (C) to the Cabinet Assembly (1) using four sets of 1/4" x 13mm Flat Washers (2) and 1/4" x 55mm Hex Button Head Bolts (1).

Next, finish securing the Side Leg Frame (B) and the Stretcher (C) using the Cam Locks (4).

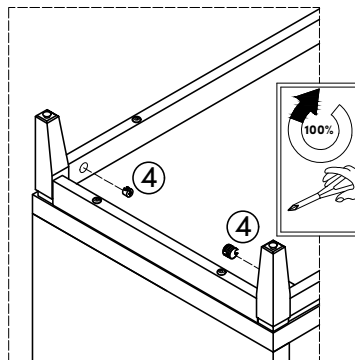
Finally, tighten all Hex Button Head Bolts.



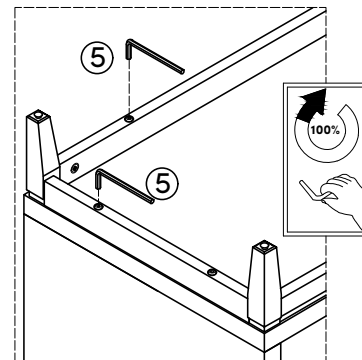
STEP 1



STEP 2



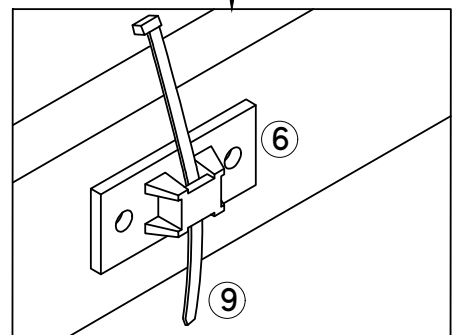
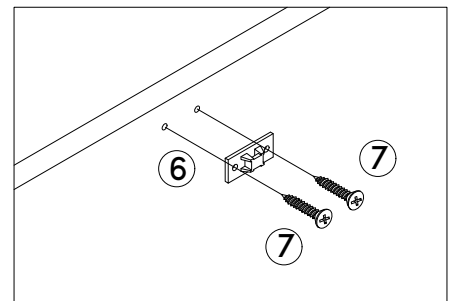
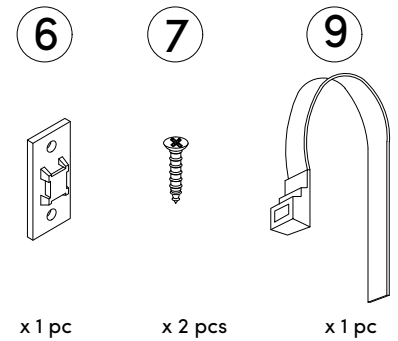
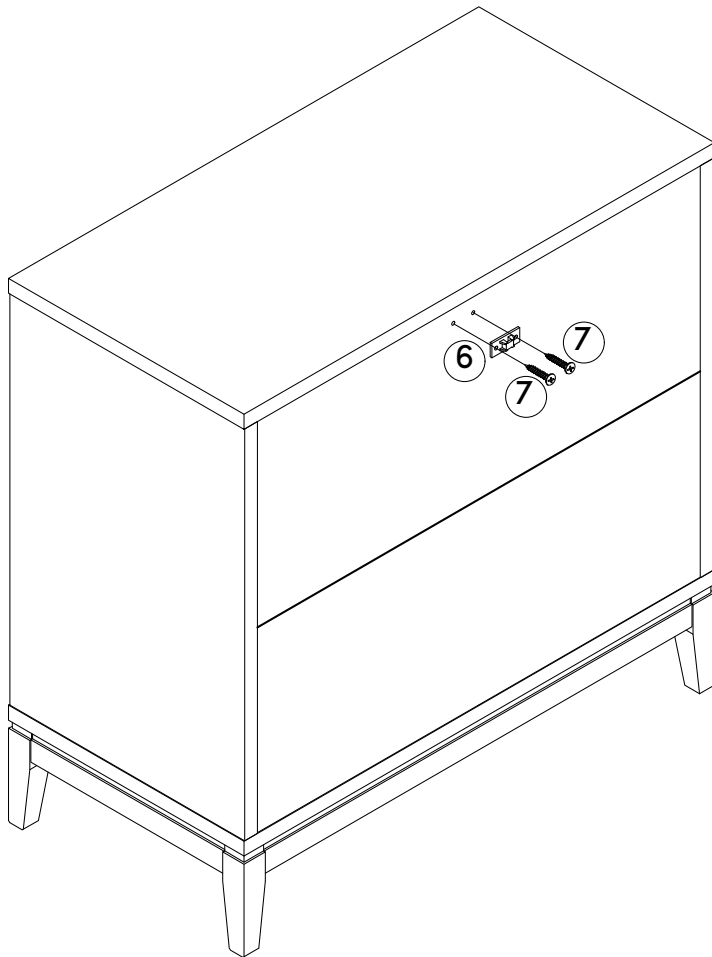
STEP 3



Step 4

Safety first!

Secure the Plastic Bracket (6) to the back of the cabinet using the M3.5 x 14mm Screws (7).

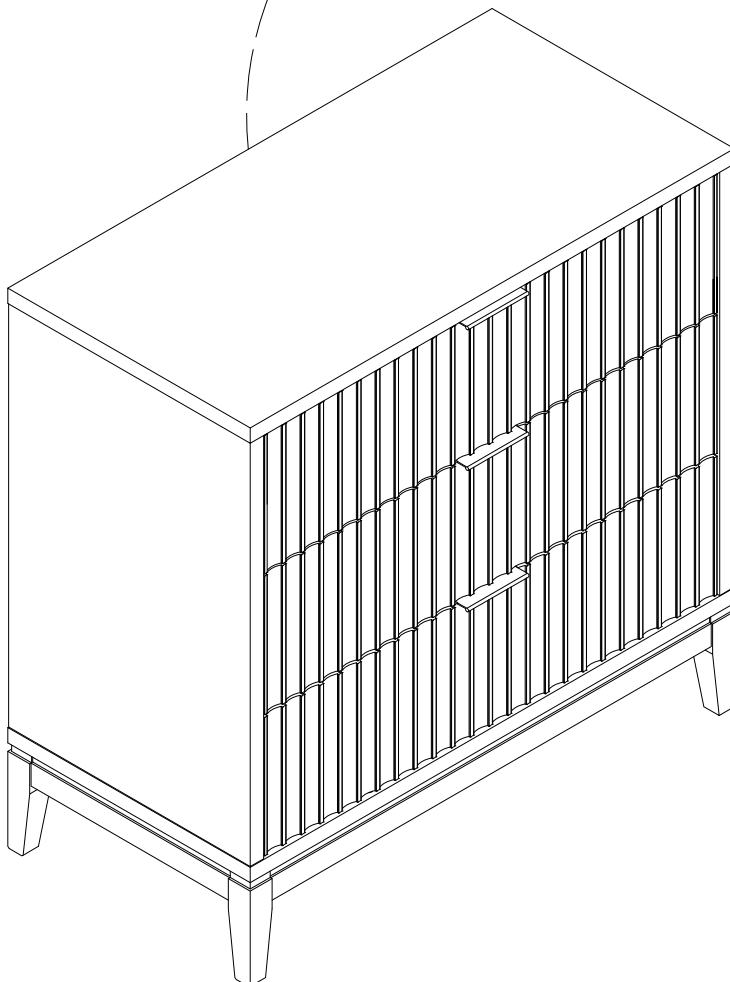
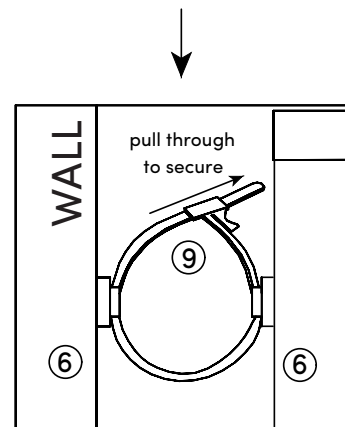
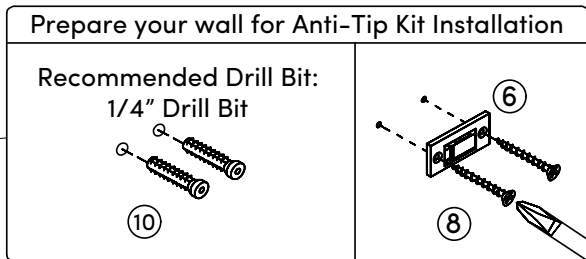
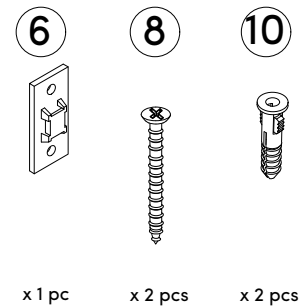


Step 5

Find the desired location for your cabinet before beginning the installation of the Wall Anchors (10). Use a 1/4" drill bit with the Plastic Bracket (6) as a drilling guide. Drill two holes in the wall, then insert the Wall Anchors (10) into the holes.

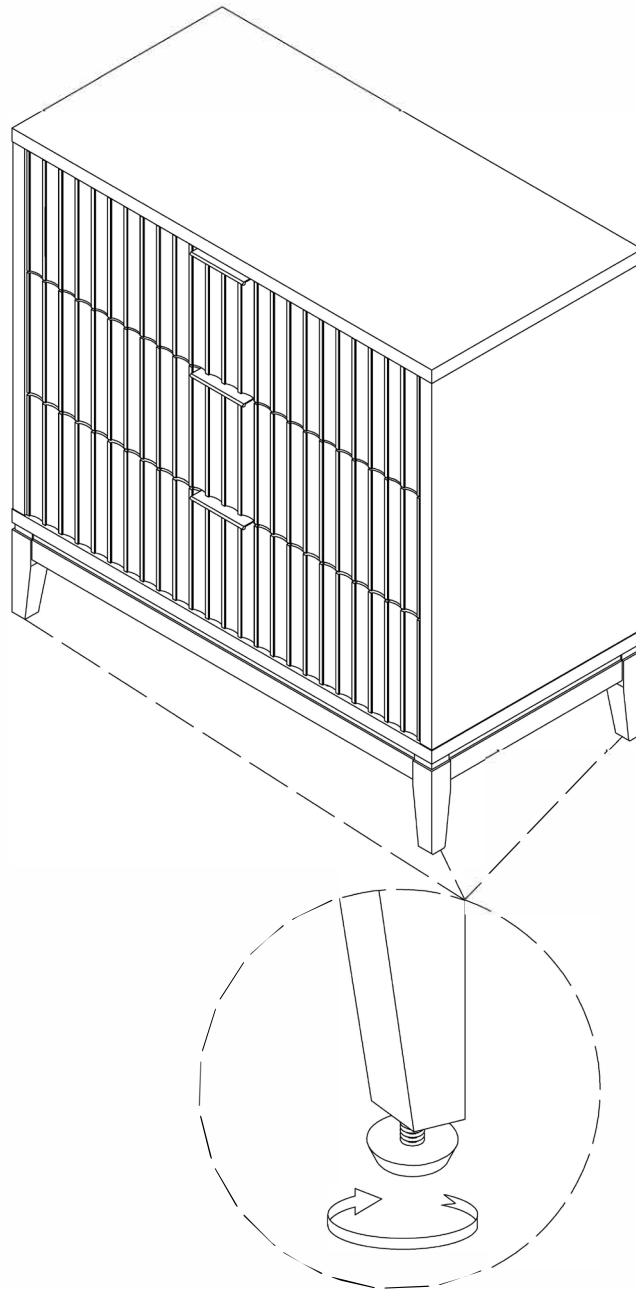
Secure the Plastic Bracket (6) to your wall by screwing the M4 x 50mm Screws (8) into the wall anchors.

Next, loop the Plastic Strap (9) through both Plastic Brackets and pull it through itself to secure the cabinet in place.



Step 6

Now go ahead and check that your Jasper dresser is level and not wobbly. If it's looking a little unlevel, adjust the levelers on the feet until it's nice and level.



Wobbly or unlevel?
Adjust feet until stable.

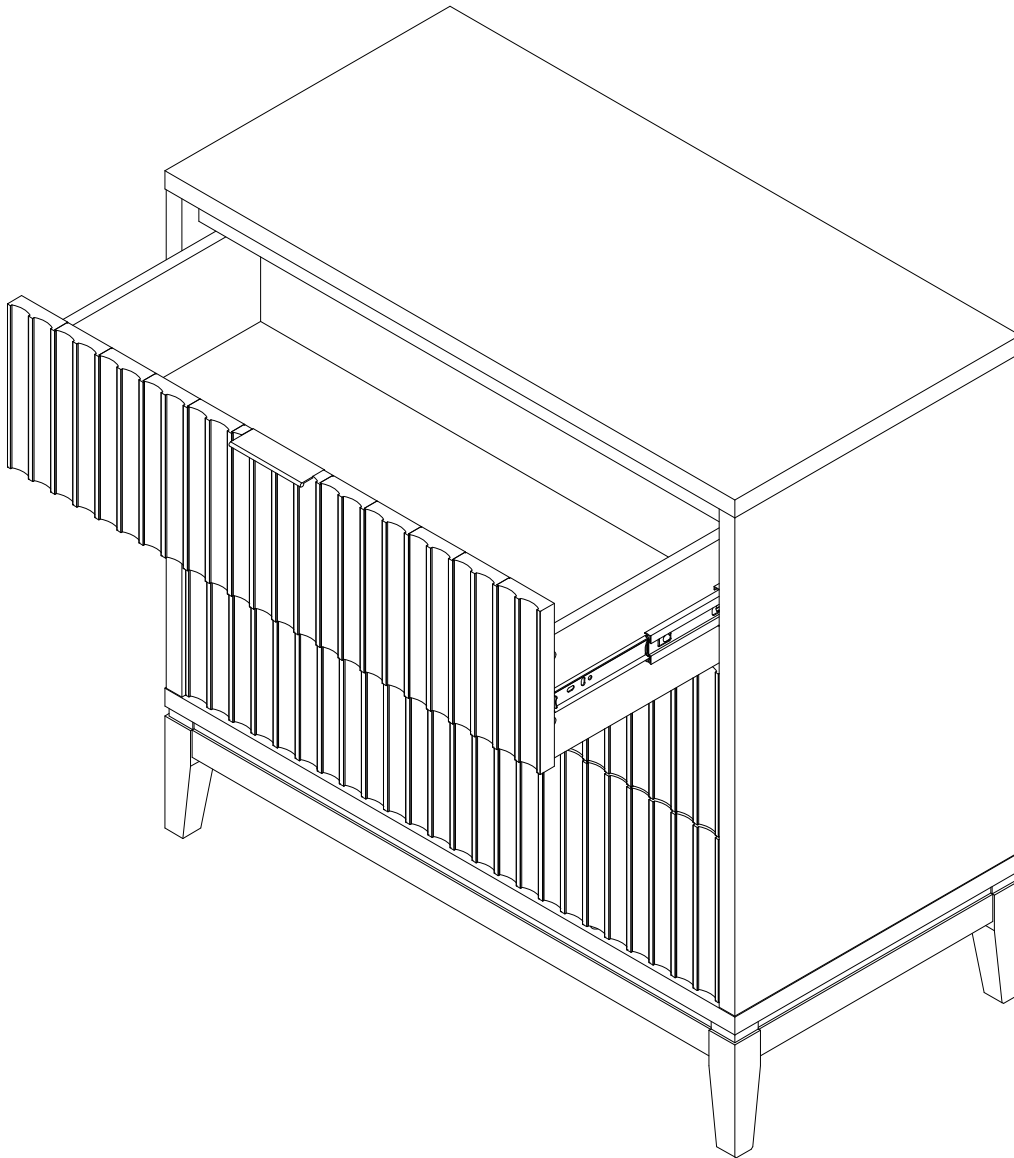
Step 7

You did it! Time to put away all those cute clothes.



Note: Only one drawer can be opened at a time.

Example: If the top drawer is open, both the middle and bottom drawers must be completely closed.



No heartburn, when we handle the return

Give us a call **1-866-619-1004** or shoot us a message at **help@nathanjames.com** we will issue you a free replacement with **zero hassle**.

Our way



Give us a call



Replacement



You

Their way



Re-package item



Schedule pick up



Track package



Replacement



You

We really don't want you to go through the hassle of re-packaging your item and sending it back, because let's be honest...nobody has time for that.

Safety first, fun later

We want your product to last as long as possible, so we recommend that you tighten the screws 2 weeks after assembly and for added safety check the tightness of all screws every 2 months.

For proper care and treatment of wood and metal please check our website at NathanJames.com/products

Safe use of this product starts with you.

Use this product responsibly with the primary concern for your safety. Follow assembly instructions carefully and inspect product upon receipt and each use.

Nathan James and its parent companies cannot be held legally responsible for any injuries or death resulted from failure to follow instructions or improper use of this product.

Do not modify the structure of this product in any way.

Our products have been tested to meet specific safety measures as they were originally intended to be sold. Any modifications will present the risk of creating significant safety issues which NJ will not be responsible for.

Proper use

- | | |
|---------------|-------------------------------------|
| DO NOT | use for commercial purposes |
| DO NOT | climb on dresser |
| DO NOT | exceed weight limit |
| DO NOT | leave spilled liquid on dresser |
| DO NOT | use if dresser is damaged or broken |
| DO NOT | make temporary repairs |
| DO NOT | use outdoors |

We are only in business if you're happy

For starters, thanks for being you.

☎ Toll-free at 1-866-619-1004

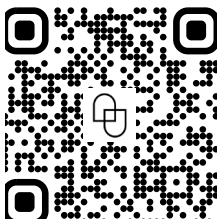
✉ Help@nathanjames.com

🌐 NathanJames.com/help

We do our best to ensure your furniture arrives without any problems, but occasionally mistakes happen—as humans we are imperfect beings. In the event that a part is damaged or missing, we will be more than happy to provide you with replacement part(s) for free.

Warranty

This product comes with a lifetime warranty from the date of purchase. Please use your phone to scan the QR code to register your product or visit <https://goo.gl/i9dk3q>



Did we do alright? Please spread the love!

If you are happy with your product, tell your friends and family about us or even better leave us a review online. Spreading the word gives us the opportunity to make more people happy and keep our prices low for your next purchase.

Brooke Burdon

Founder, Nathan James