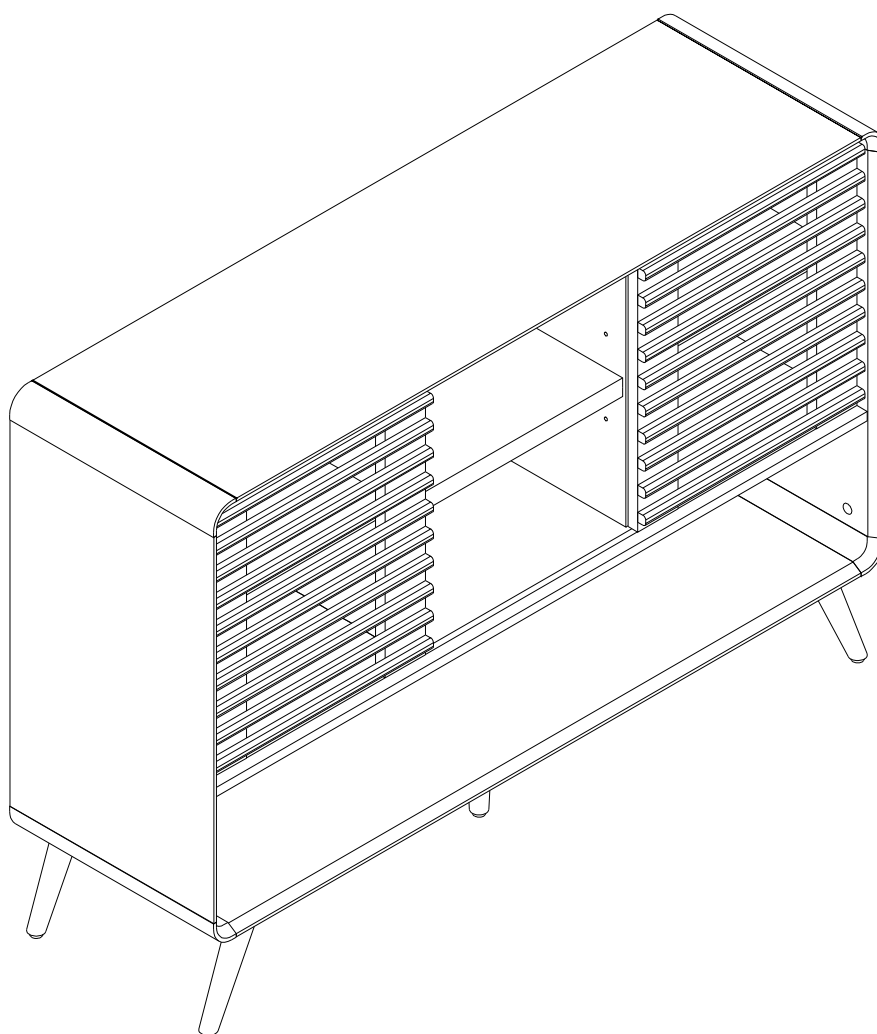


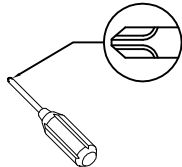
AI - SDPC46ET

Assembly Instructions

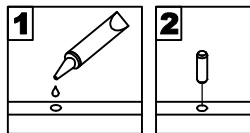


General Assembly Guidelines

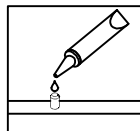
- I. Ensure that all parts and hardware are available before beginning assembly.
- II. Follow each step carefully to ensure the proper assembly of this product.
- III. Two people are recommended for ease in the assembly of this product.
- IV. A Phillips head screwdriver is required for the assembly of this product .



- V. The provided glue is to secure wood dowels in place . When first inserting dowels , locate the appropriate hole for the dowel , place a small amount of glue in the hole and insert the dowel . Wipe away excess glue immediately.

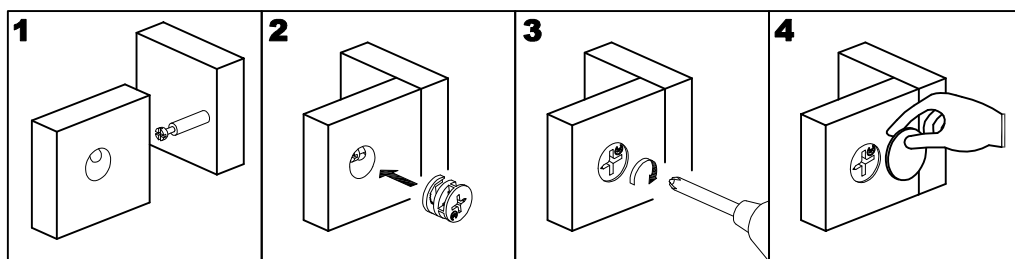


In future assembly steps when dowels are necessary to attach assembly parts together , place a small amount of glue on the end of the dowel before attaching parts together . Wipe away excess glue immediately.

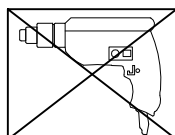


VI HOW THE KNOCK DOWN (KD) ASSEMBLY SYSTEM WORKS

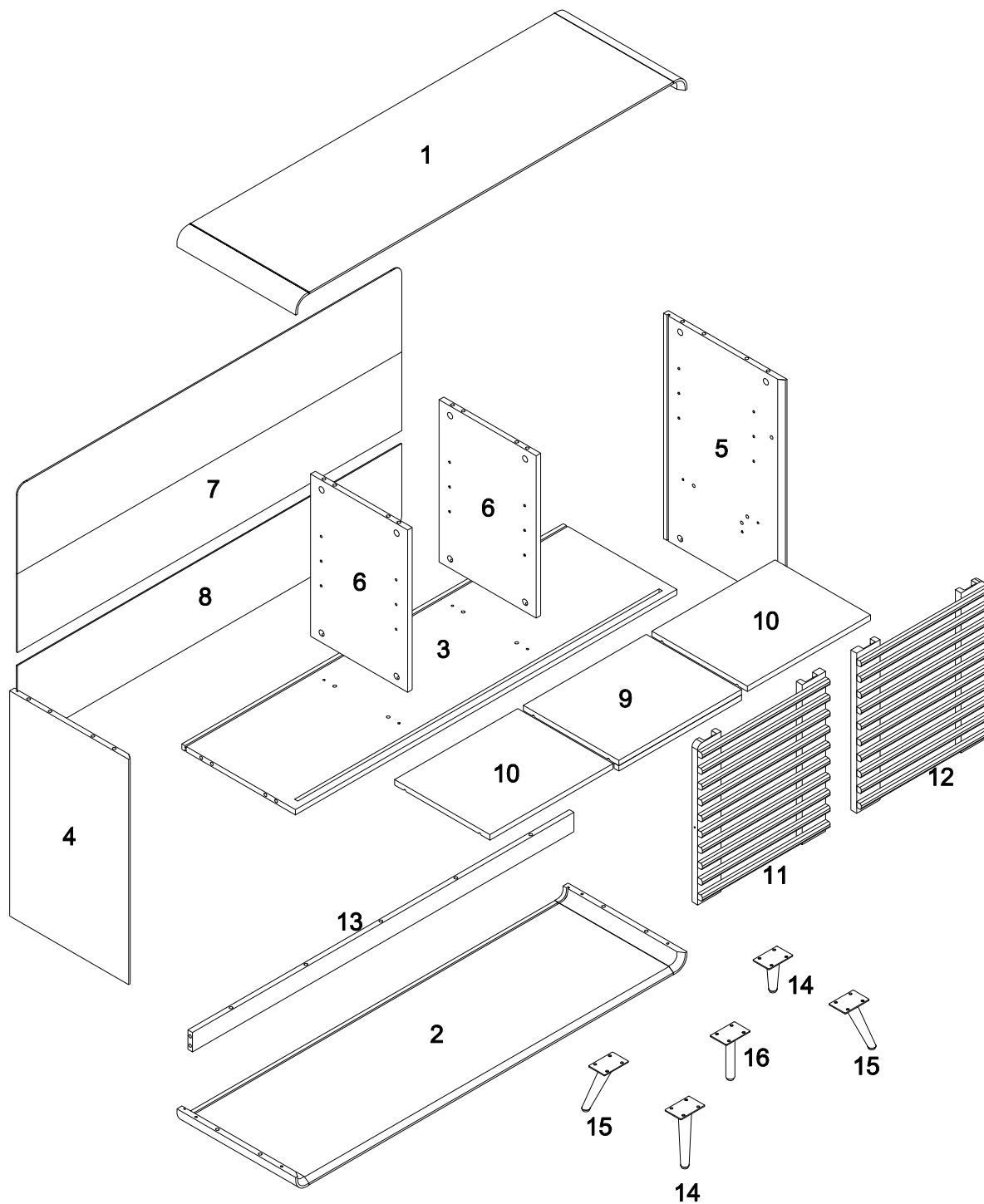
- 1.Screw the Cam Bolt into the pre-drilled hole on the panel. Make sure Cam Bolt goes into the pre-drilled hole on the end of panel for Cam Lock.
- 2.Insert the Cam Lock into the pre-drilled large hole on the panel. Make sure the arrow on the face of Cam Lock points towards Cam Bolt.
- 3.Take a Phillips screwdriver and rotate the Cam Lock clockwise to lock the Cam Bolt.
- 4.Use the sticker to conceal the Cam.




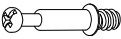


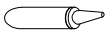




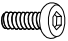
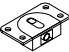
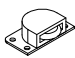
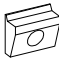

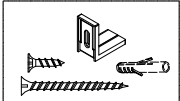
- VII. Power tools should not be used to assemble this product .

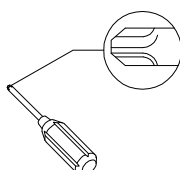


Parts List



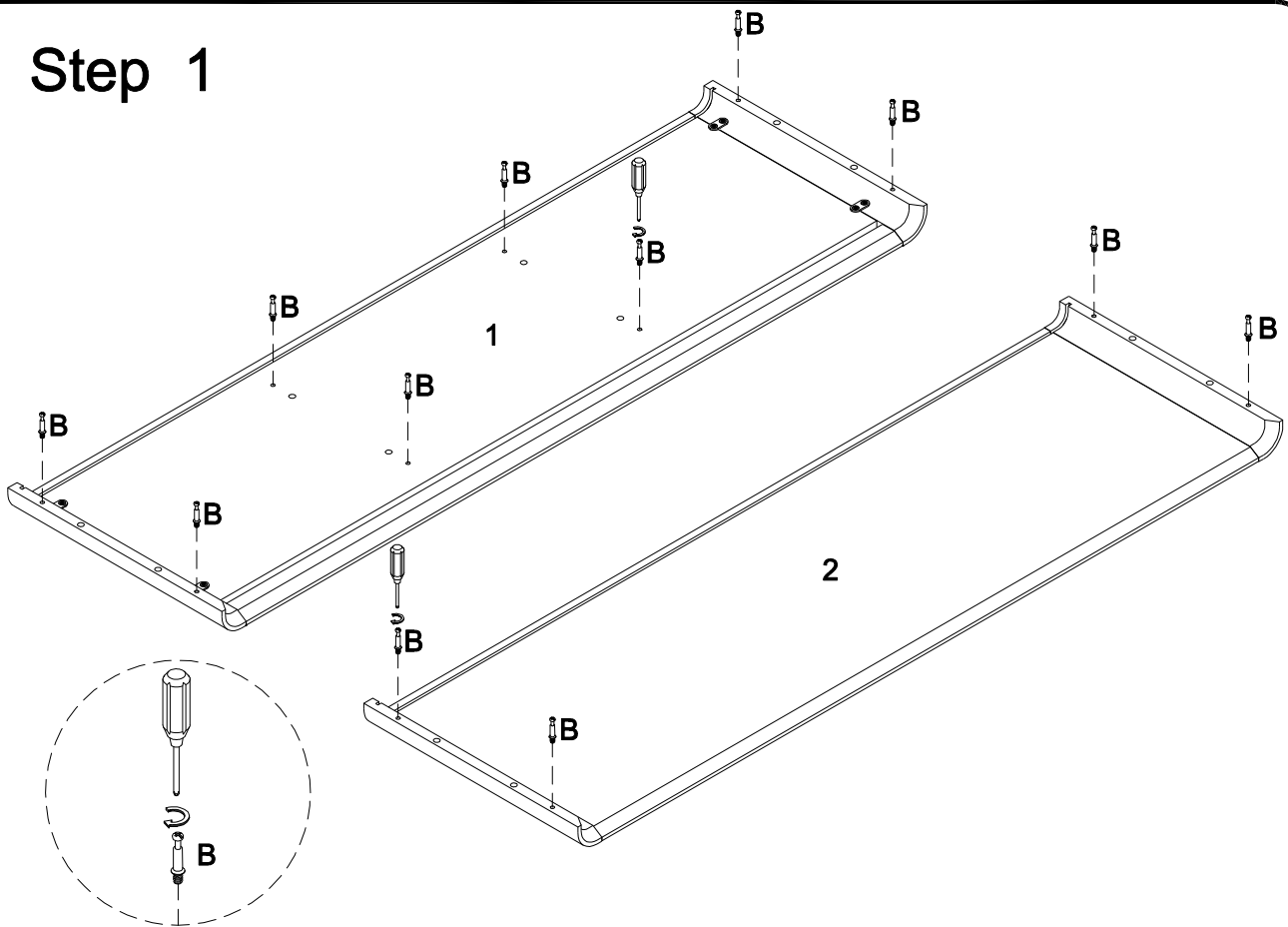
Hardware List

A		Ø8x30mm	Dowel	24 pcs
B		Ø6x35mm	Cam bolt	25 pcs
C		Ø15x11mm	Cam lock	25 pcs
D		Ø30mm	Cam cover	25 pcs
E			Glue	1 pc
F		Ø5*16mm	Shelf Pin	12 pcs
G		M 4	Allen Wrench	1 pc
H		Ø3*12 , d=6.5mm	Screw	32 pcs
J		Ø5*Ø13*9mm	Screw	2 pcs
K		Ø6x13mm	Bolt	20 pcs
L		58x31x16mm	Pulley	4 pcs
M		58x31x18mm	Pulley	4 pcs
N		16*16.5*10.5mm	Plastic wedge	16 pcs
O		Ø3*17mm, d=5	Screw	16 pcs
P		Tipping Restraint Hardware		2 sets

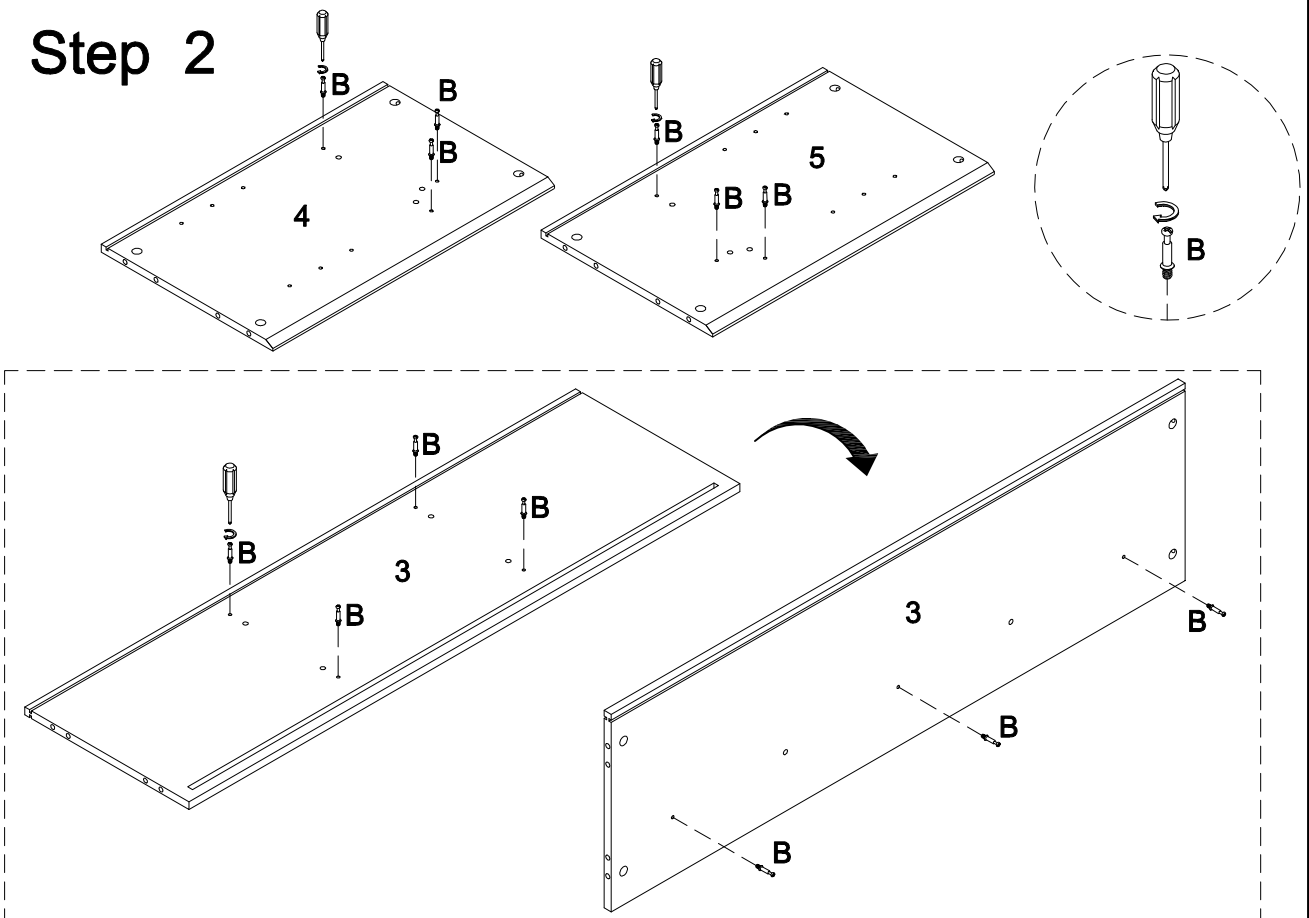


Philips head screwdriver required for assembly
(not included)

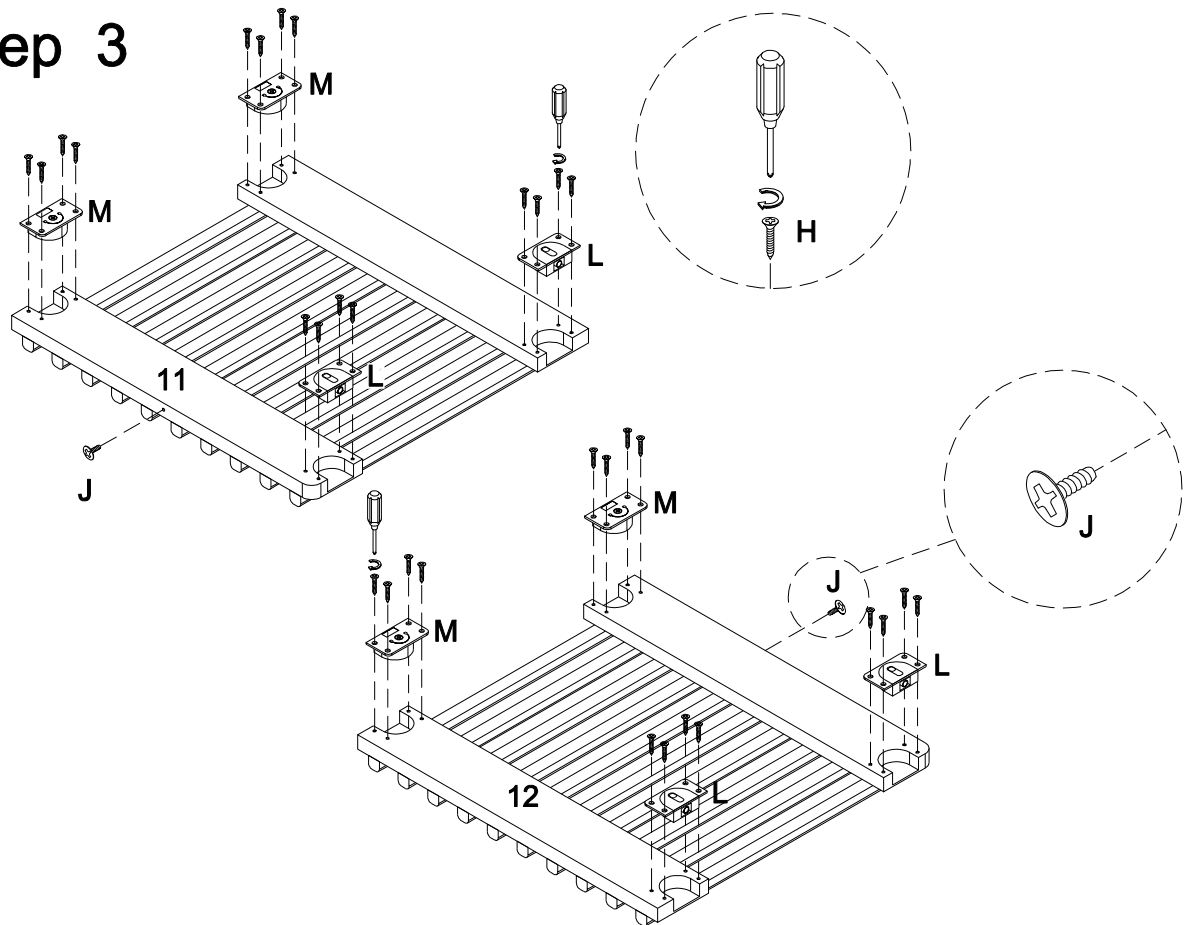
Step 1



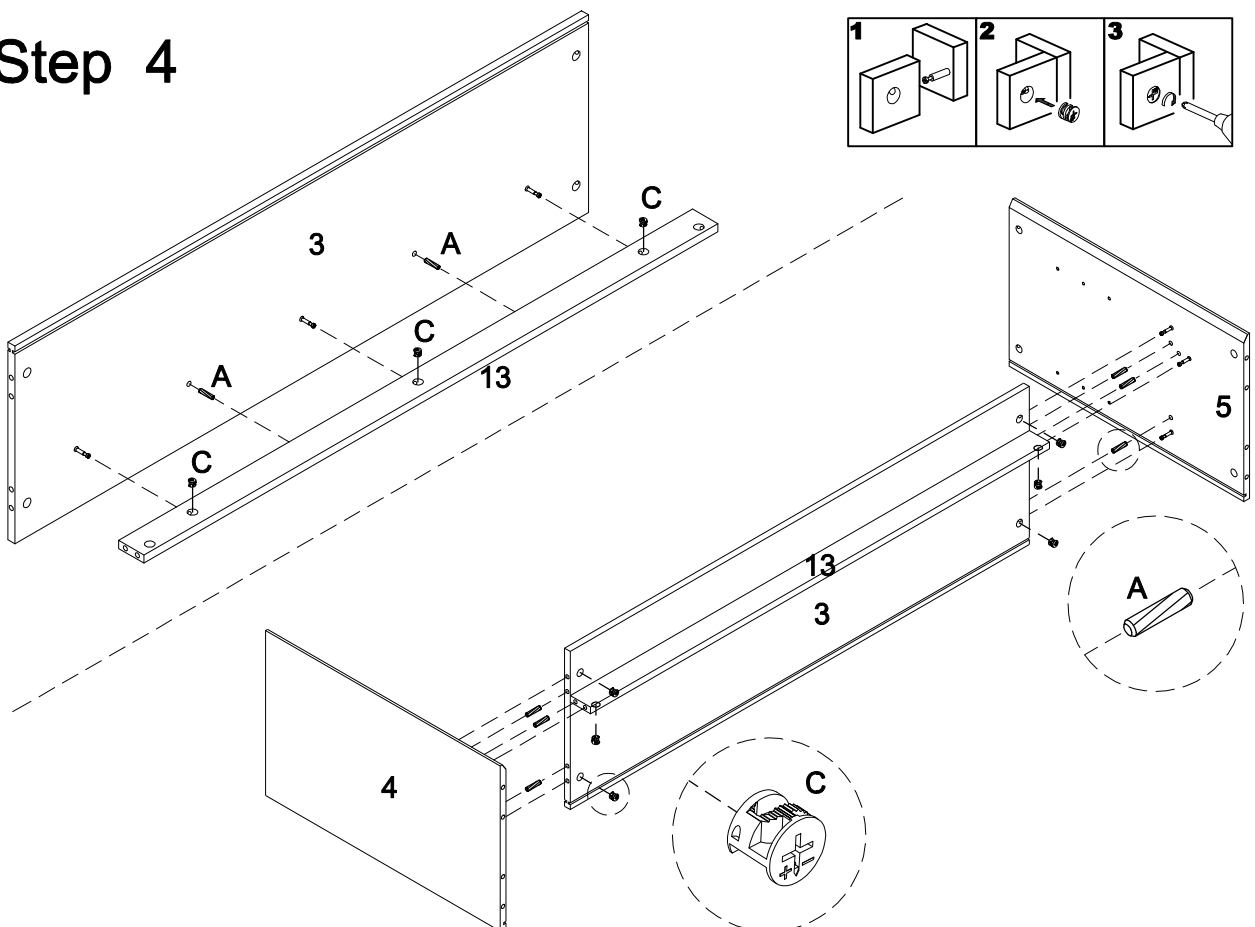
Step 2



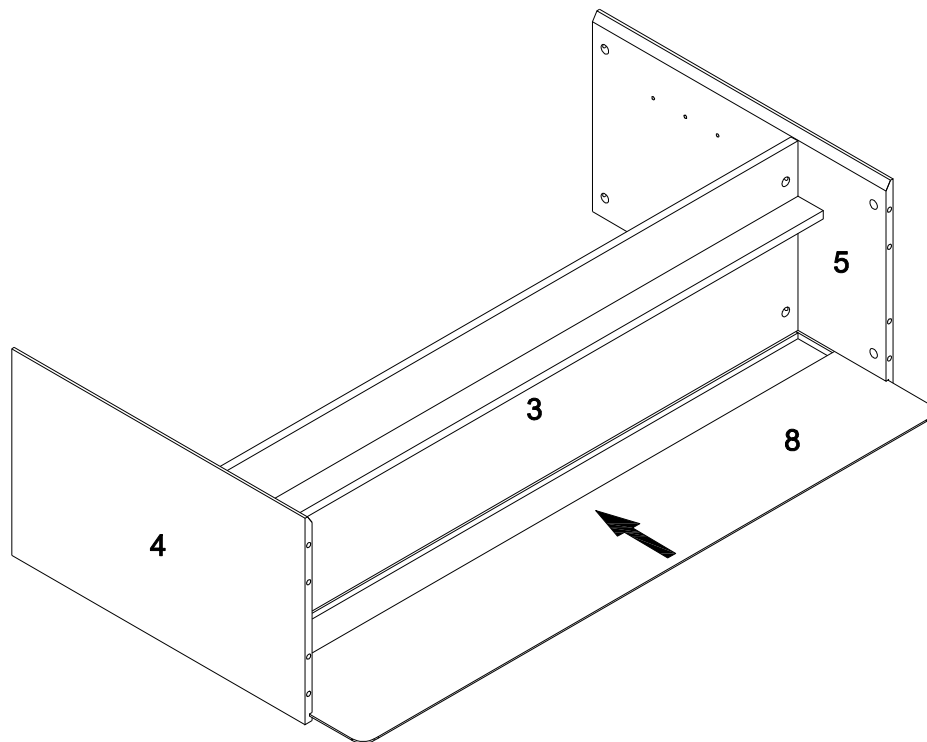
Step 3



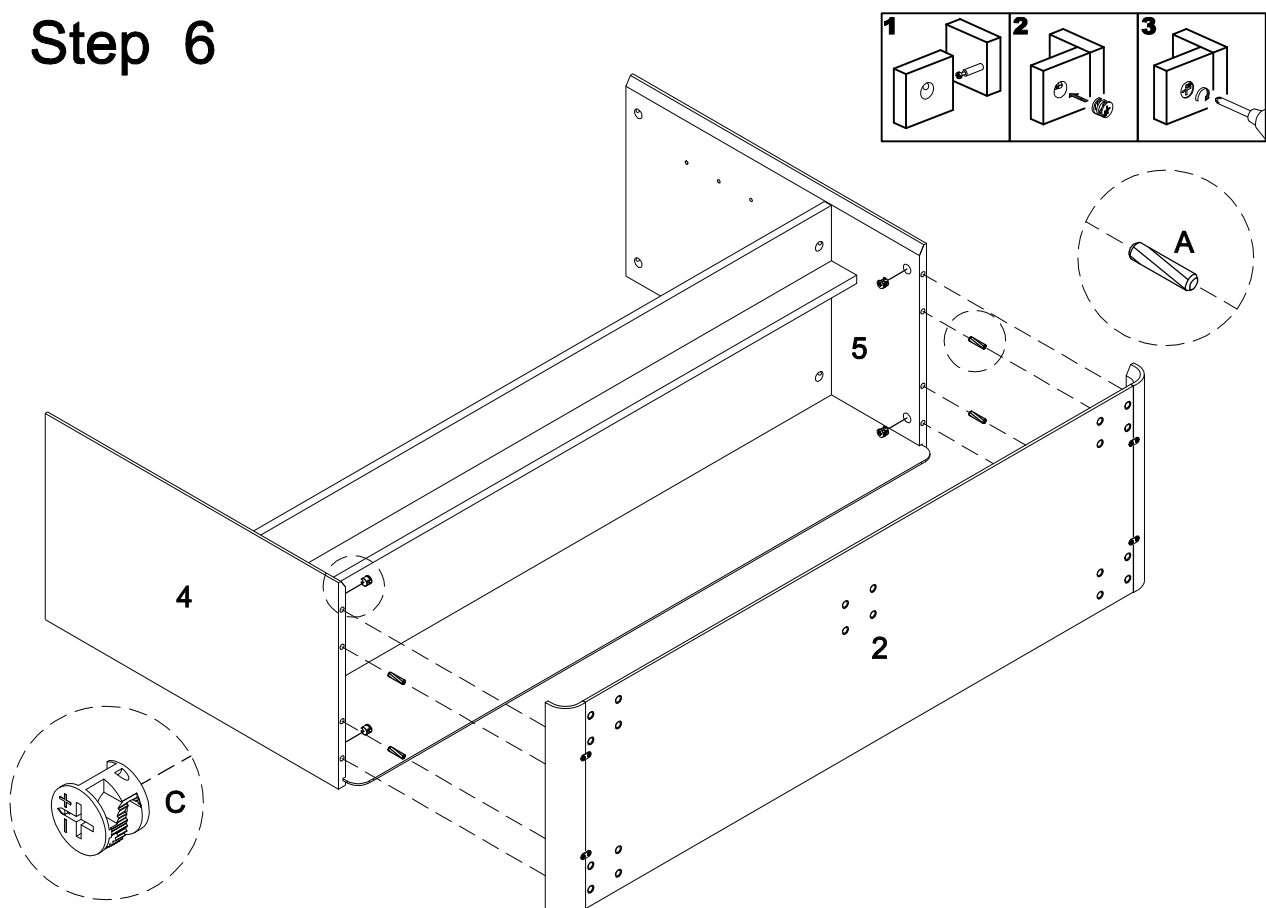
Step 4



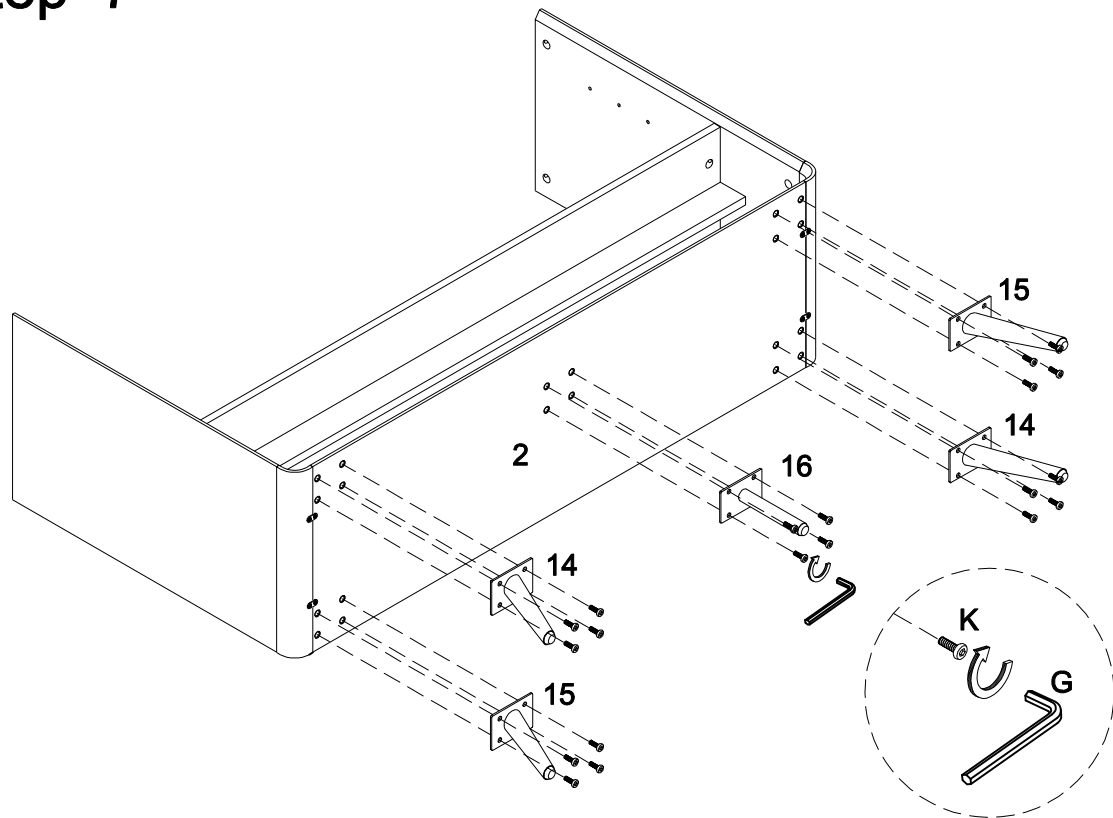
Step 5



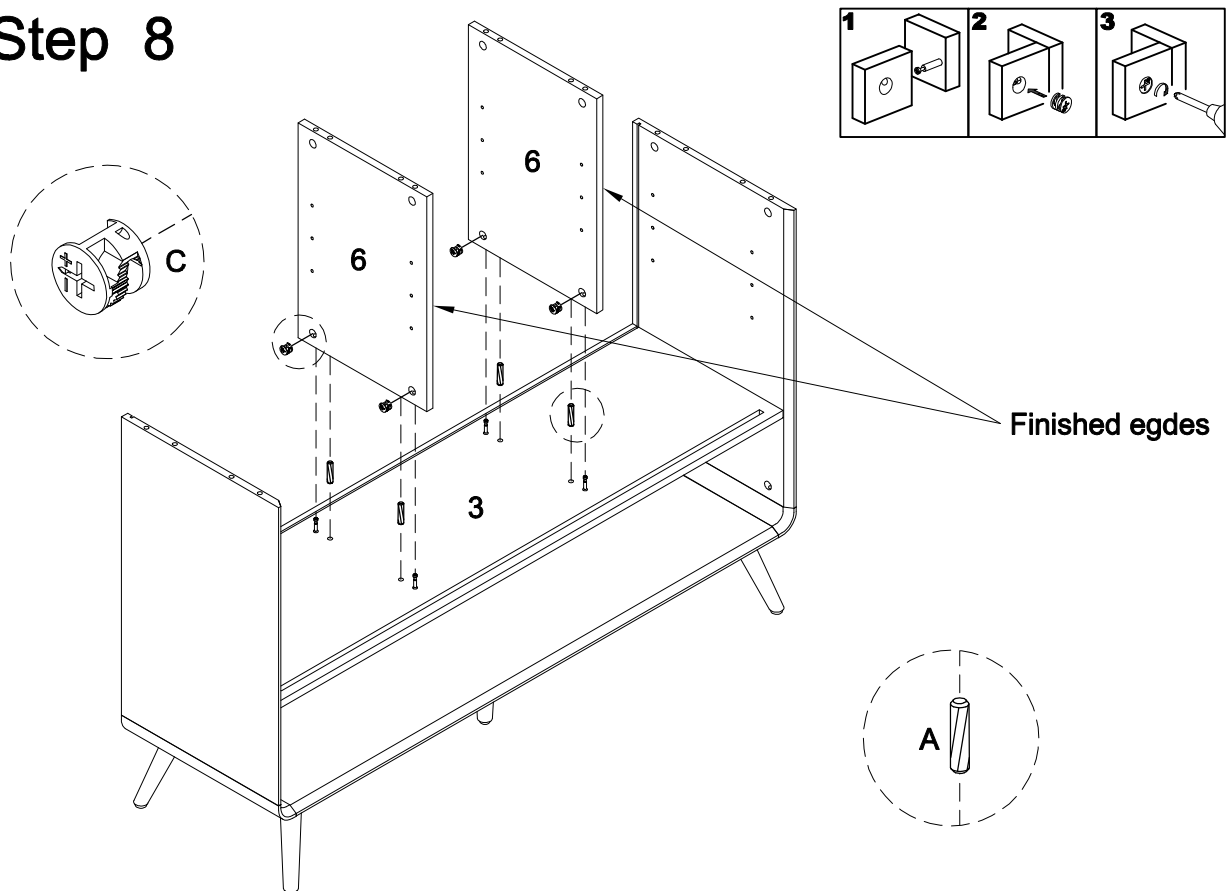
Step 6



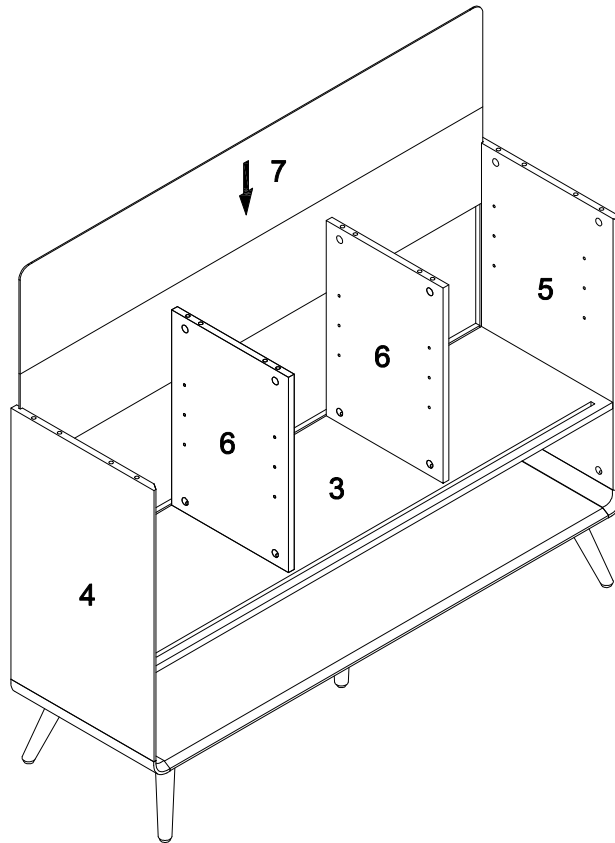
Step 7



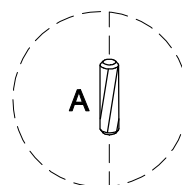
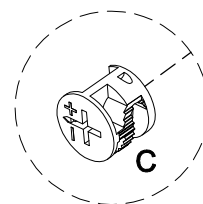
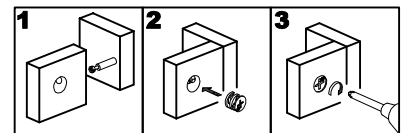
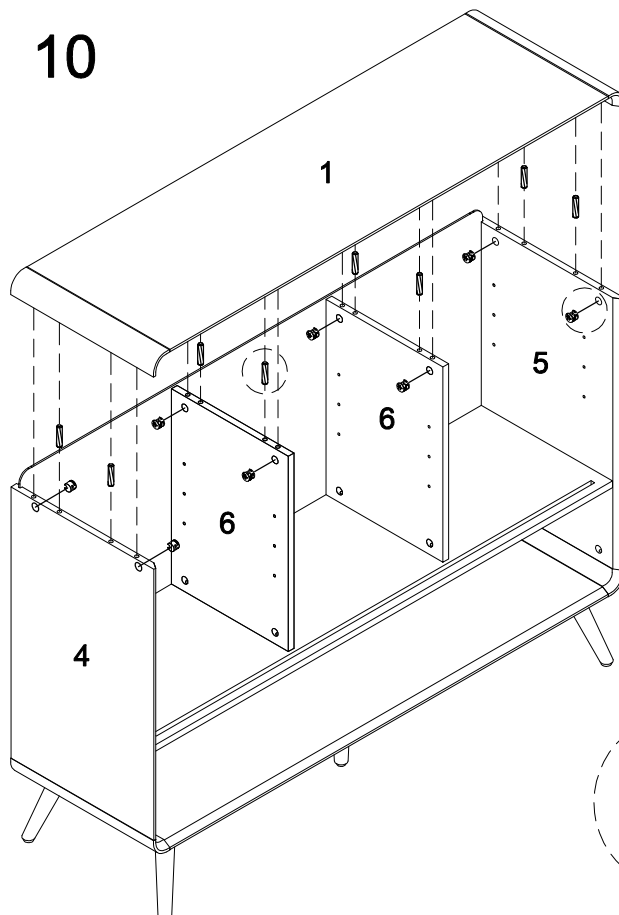
Step 8



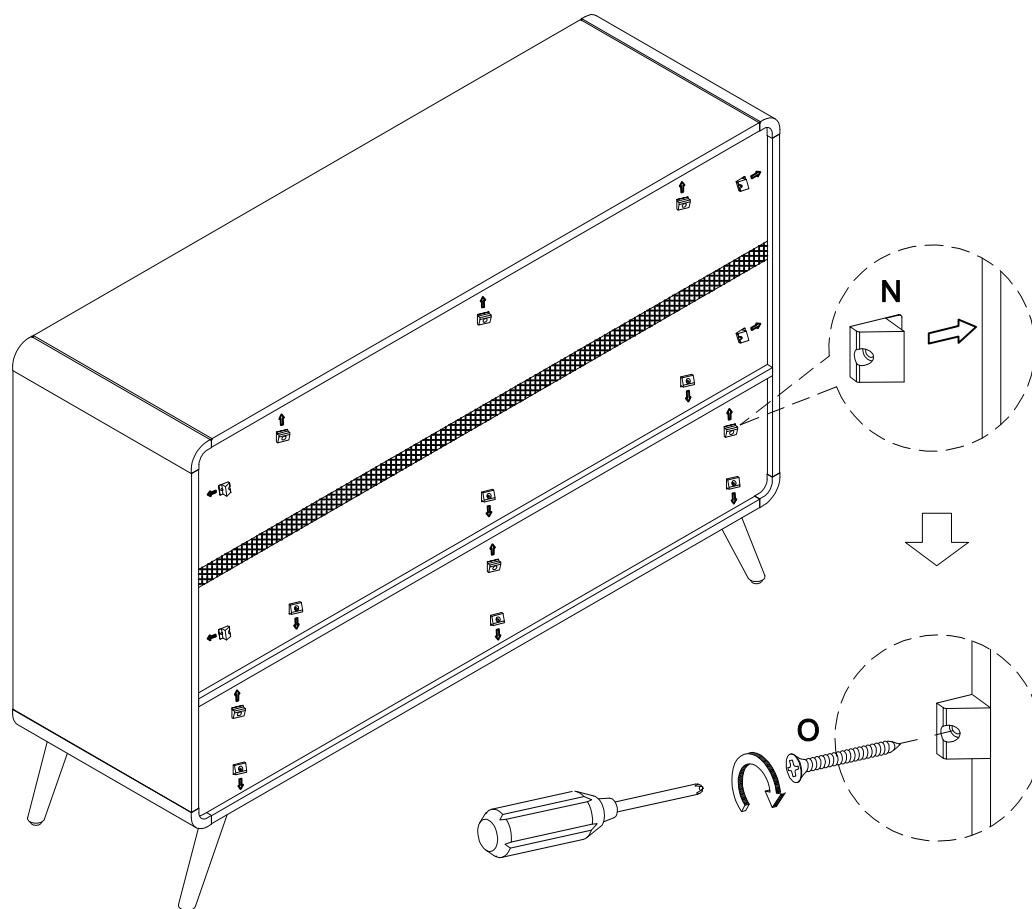
Step 9



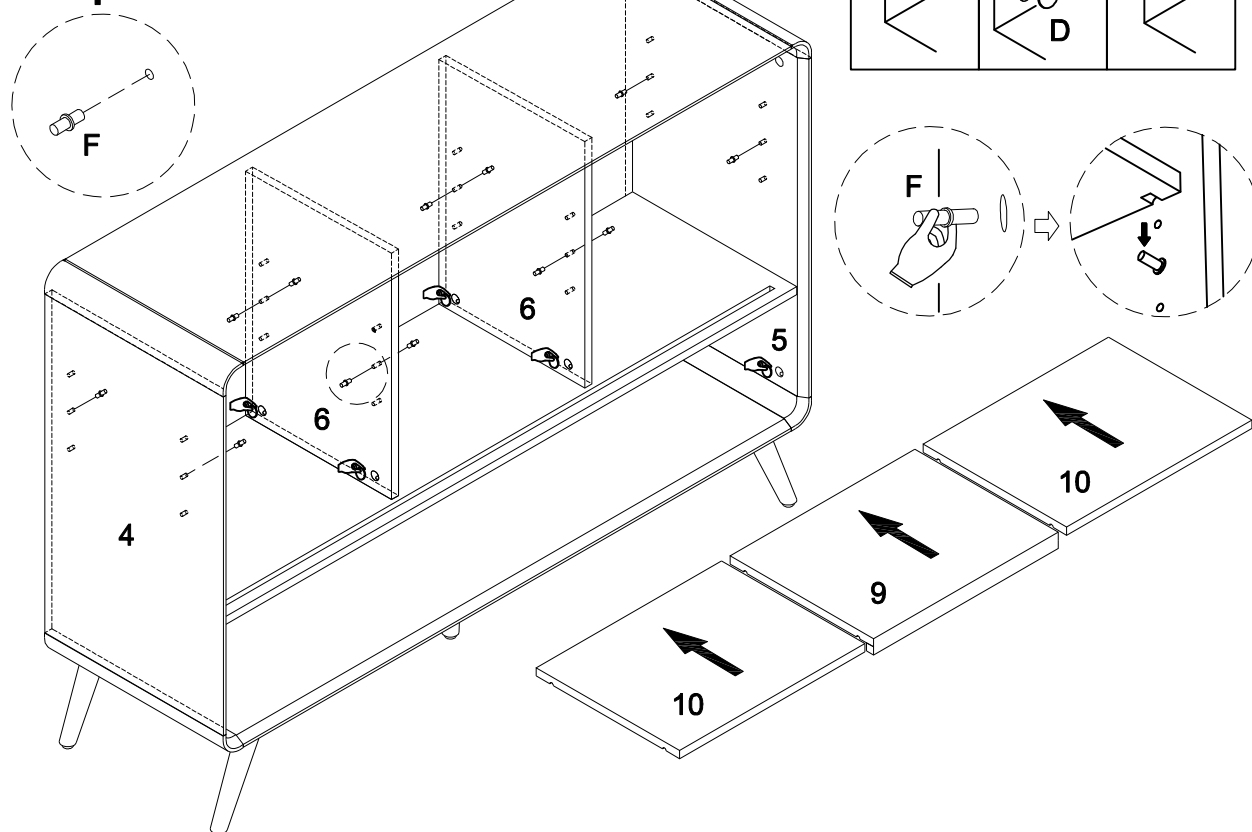
Step 10



Step 11

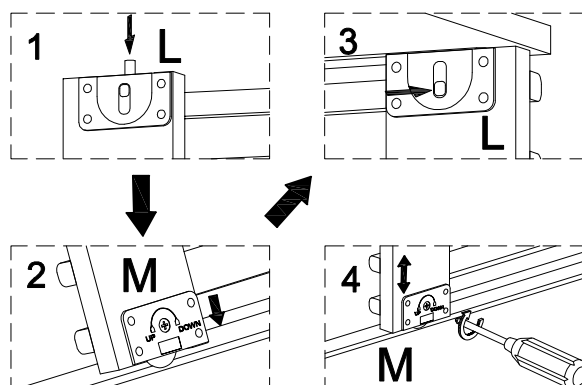
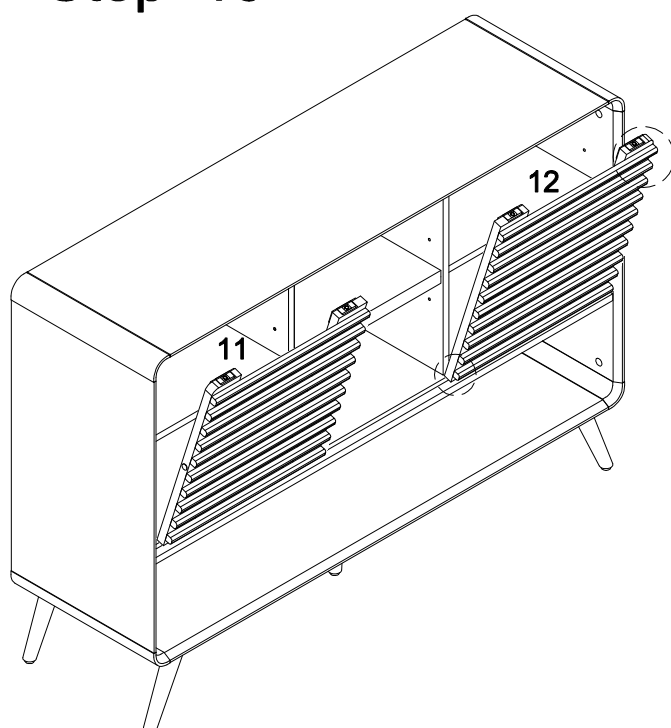


Step 12

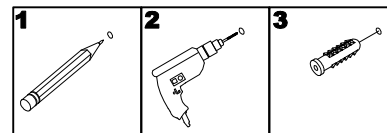


Step 13

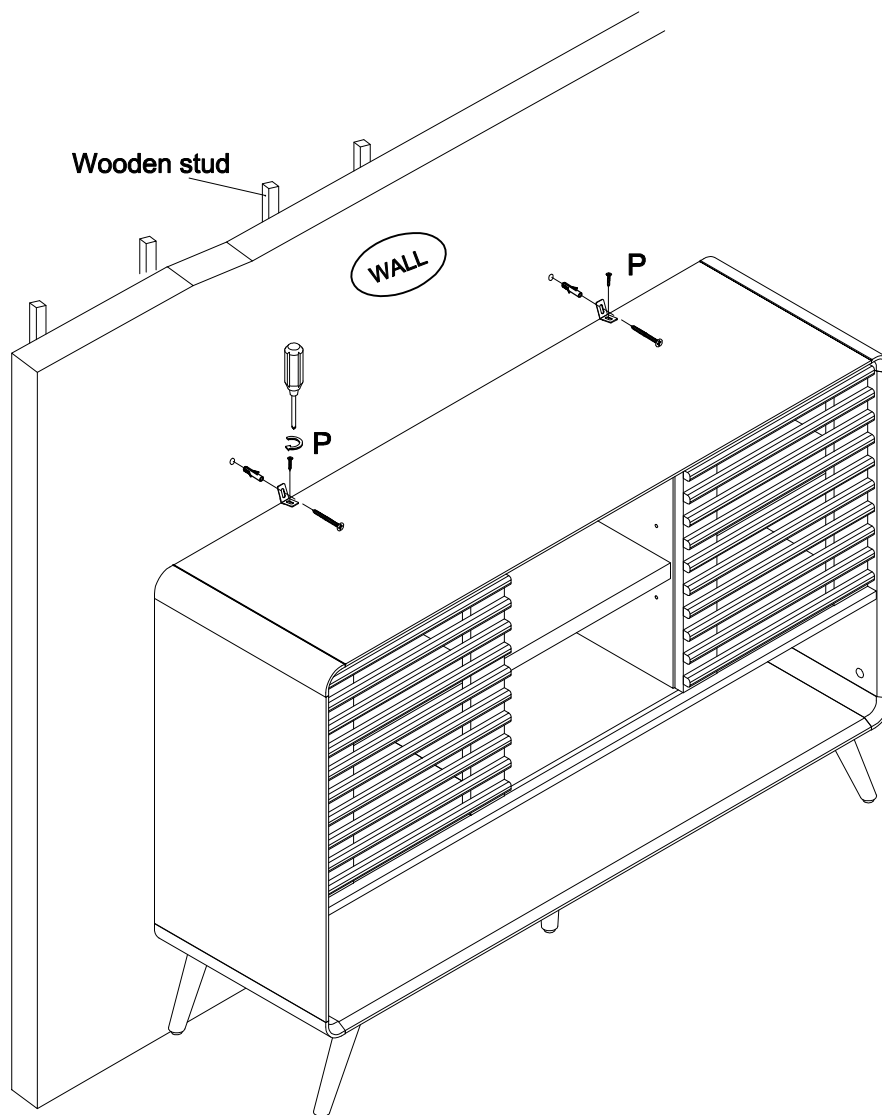
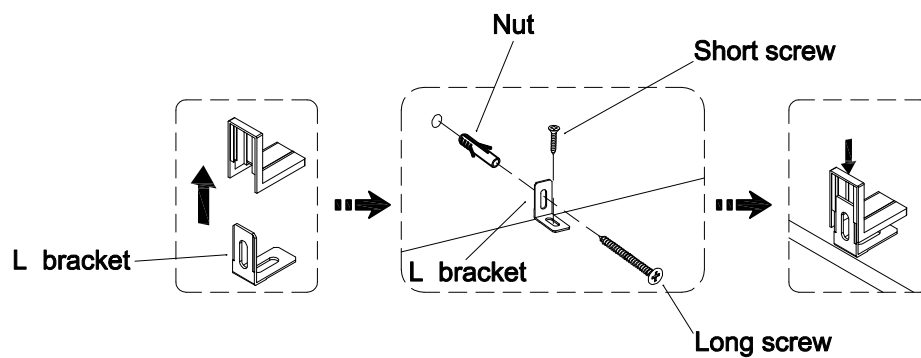
- Note:**
1. Press the pin of part L in the retracted position.
 2. Snap the pulley of part M into the sliding rail of the middle horizontal panel.
 3. Press the button of part L slightly to release the pin and align with the sliding rail of the top panel.
 4. If necessary, adjust the screw on the pulley to make the door slide smoothly. (Turn left to loose the pulley, turn right to tighten the pulley)



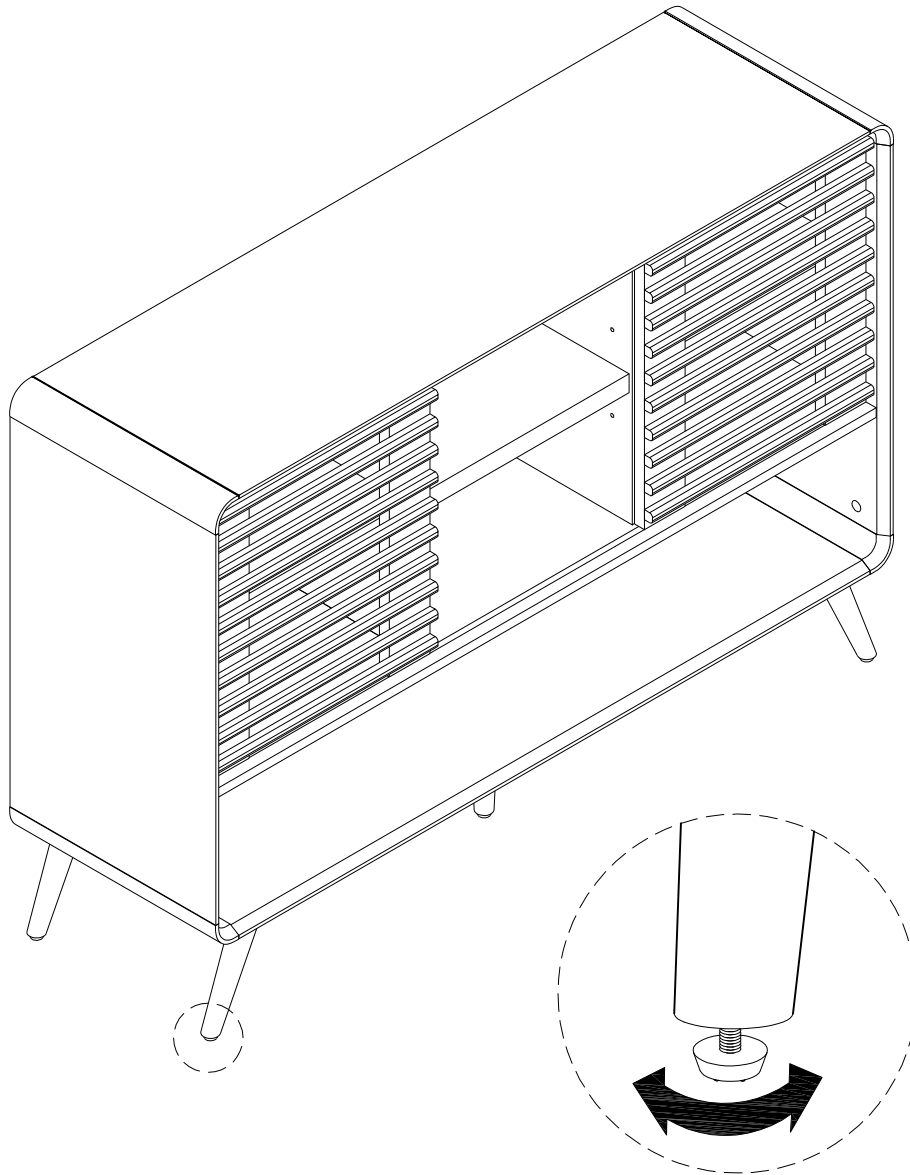
Step 14



Serious or fatal injuries can occur from furniture tipping over. To prevent the furniture from tipping over we recommend that it is permanently fixed to the wall. Wall anchor and hardware are included with this product. Please make sure hardware is suitable for your walls before installing, as different wall materials may require different types of anchors.



Step 15



Final Assembly