

ASSEMBLY INSTRUCTIONS

MODEL : WM1722E-BS5

IMPORTANT NOTE : *

- PLACE ALL WOODEN PARTS ON A CLEAN AND SMOOTH SURFACE SUCH AS A RUG OR CARPET TO AVOID THE PARTS FROM BEING SCRATCHED.
- BEFORE YOU BEGIN, KINDLY FOLLOW THE ASSEMBLY INSTRUCTIONS STEP BY STEP.
- DO NOT TIGHTEN ALL SCREWS UNTIL THE CHAIR IS FULLY SET-UP.

HARDWARE LIST			PART LIST		
A	JCBC M6 x 25mm + S/W M6 + F/W M6 x 13mm	4PCS	1	LEG RIGHT	1PC
B	JCBC M6 x 55mm + S/W M6 + F/W M6 x 13mm	4PCS	2	LEG LEFT	1PC
C	JCBC W SCREW M7 x 40mm	1PC	3	TOP REST	1PC
D	PH CB SCREW M4 x 32mm	2PCS	4	CHAIR SEAT	1PC
E	PH CB SCREW M4 x 25mm	17PCS	5	FRONT STRETCHER	1PC
F	ALLEN KEY M4 (BALL SHAPE)	1PC	6	CENTER STRETCHER	1PC
G	PROTECTIVE DISC 22MM	4PCS	7	CORNER BLOCK (LONG)	2PCS
			8	CORNER BLOCK (SHORT)	2PCS

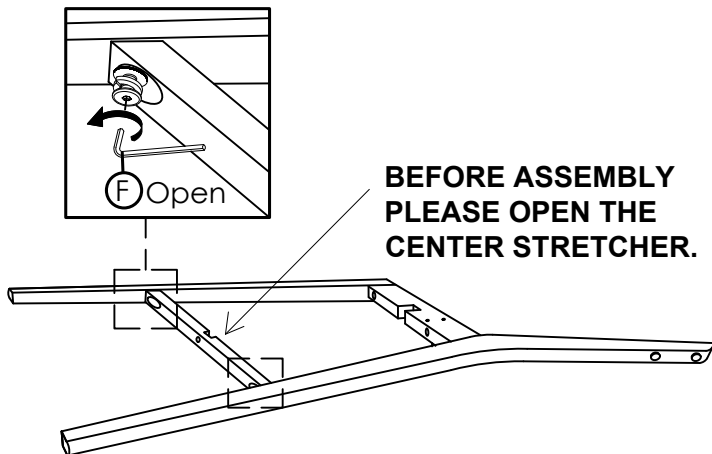
CAUTIONS :

(1) **DO NOT FULLY-TIGHTEN THE NUT OR NUT BOLTS INITIALLY UNTIL ALL NUTS OR BOLT IS READY ASSEMBLED.**

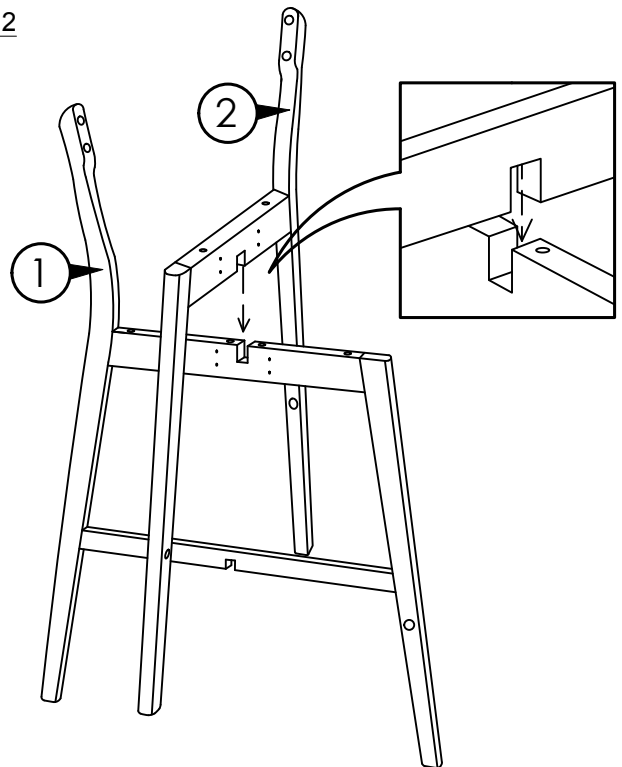
(TO AVOID CAUSING DAMAGES TO THE THREAD, DO NOT OVER-TIGHTEN THE NUTS OR BOLTS.)

(2) **KEEP ALL HARDWARE PART OUT OF REACH OF CHILDREN.**

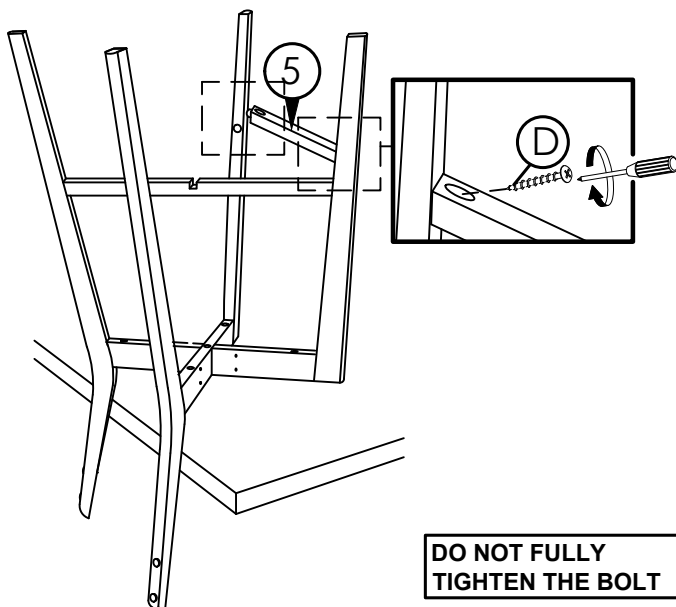
STEP 1



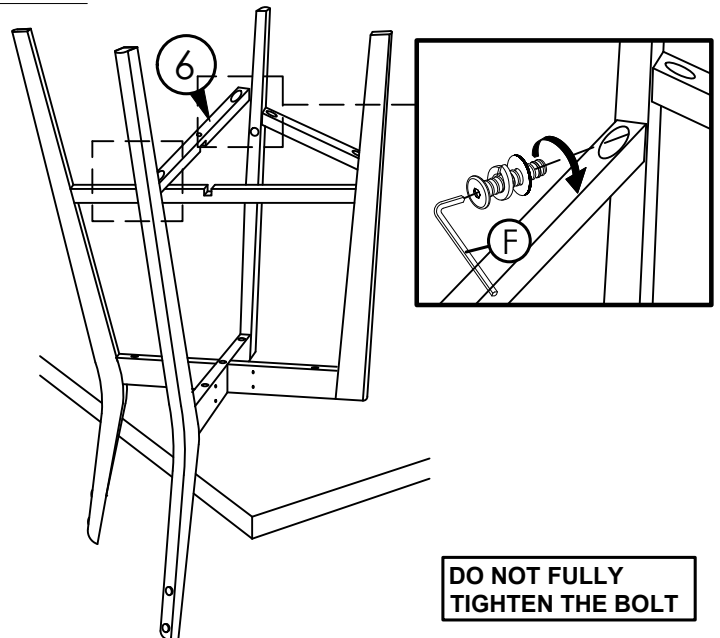
STEP 2



STEP 3



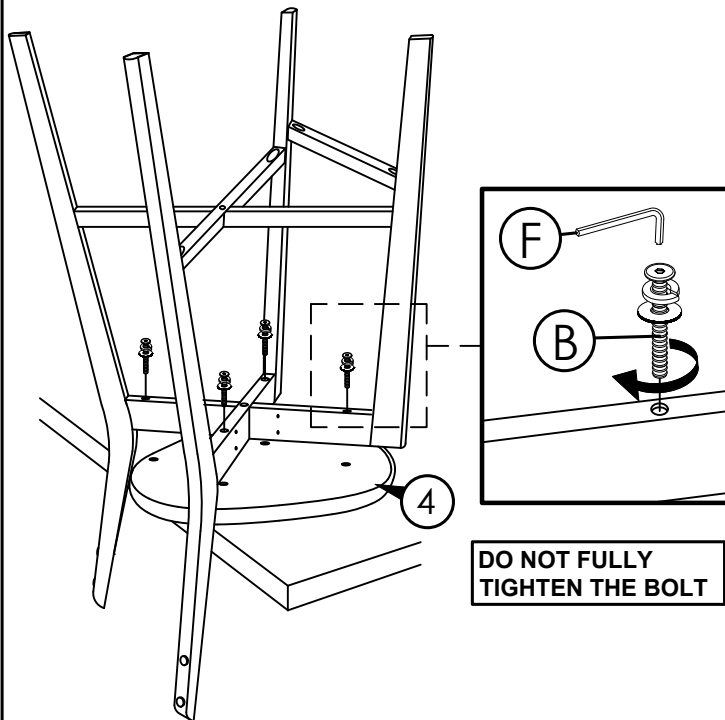
STEP 4



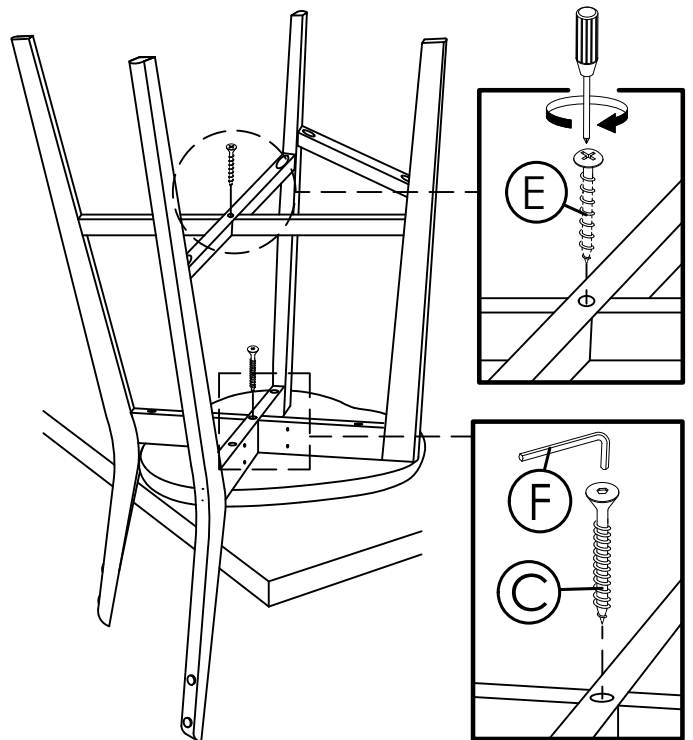
ASSEMBLY INSTRUCTIONS

MODEL : WM1722E-BS5

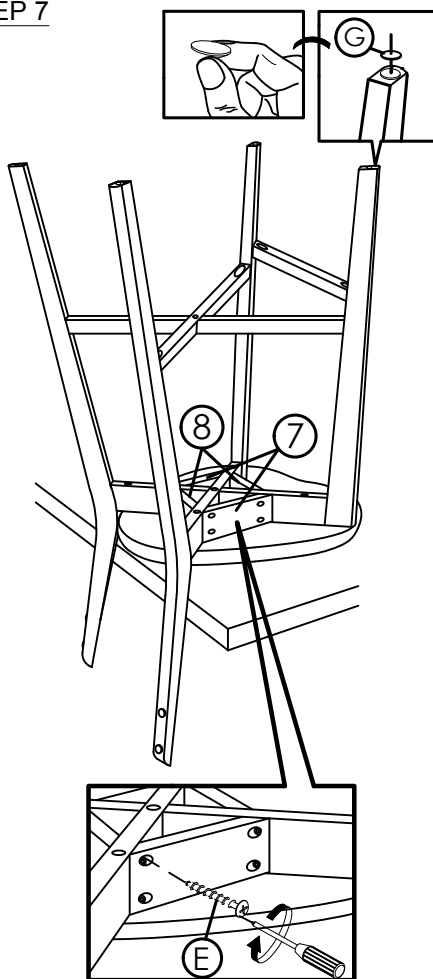
STEP 5



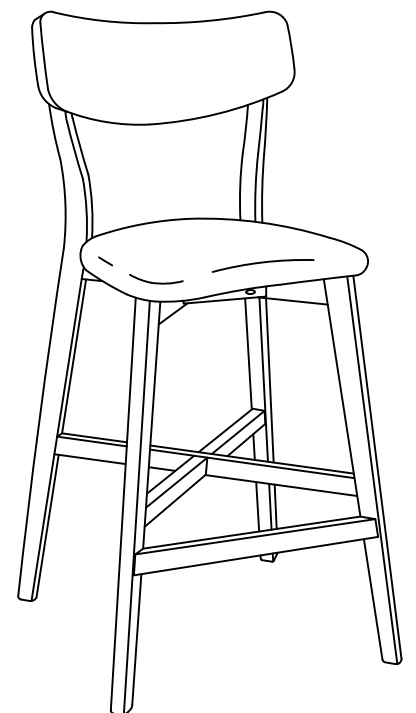
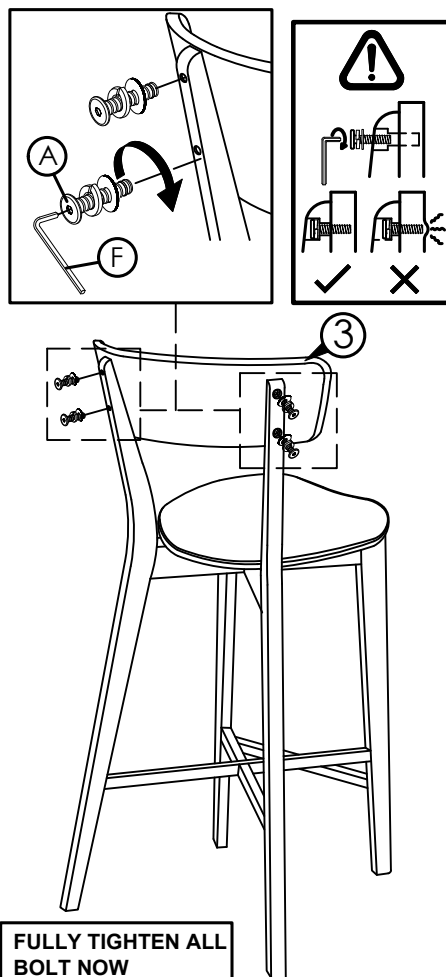
STEP 6



STEP 7



STEP 8



COMPLETED
BARSTOOL ASSEMBLY.