

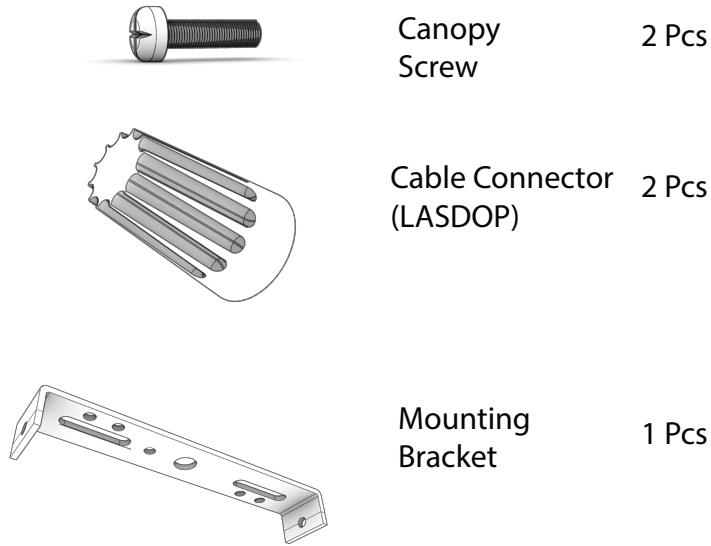
Installation Instructions

Wiring Pendant

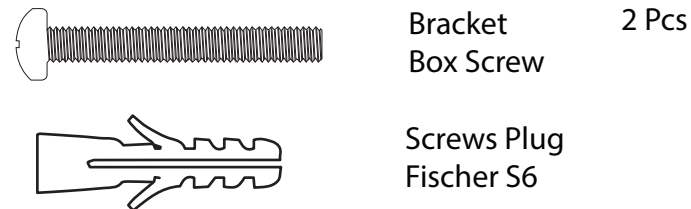


WARNING :
Turn off power at circuit before wiring
and always consult a licensed electrician.

Packing list:

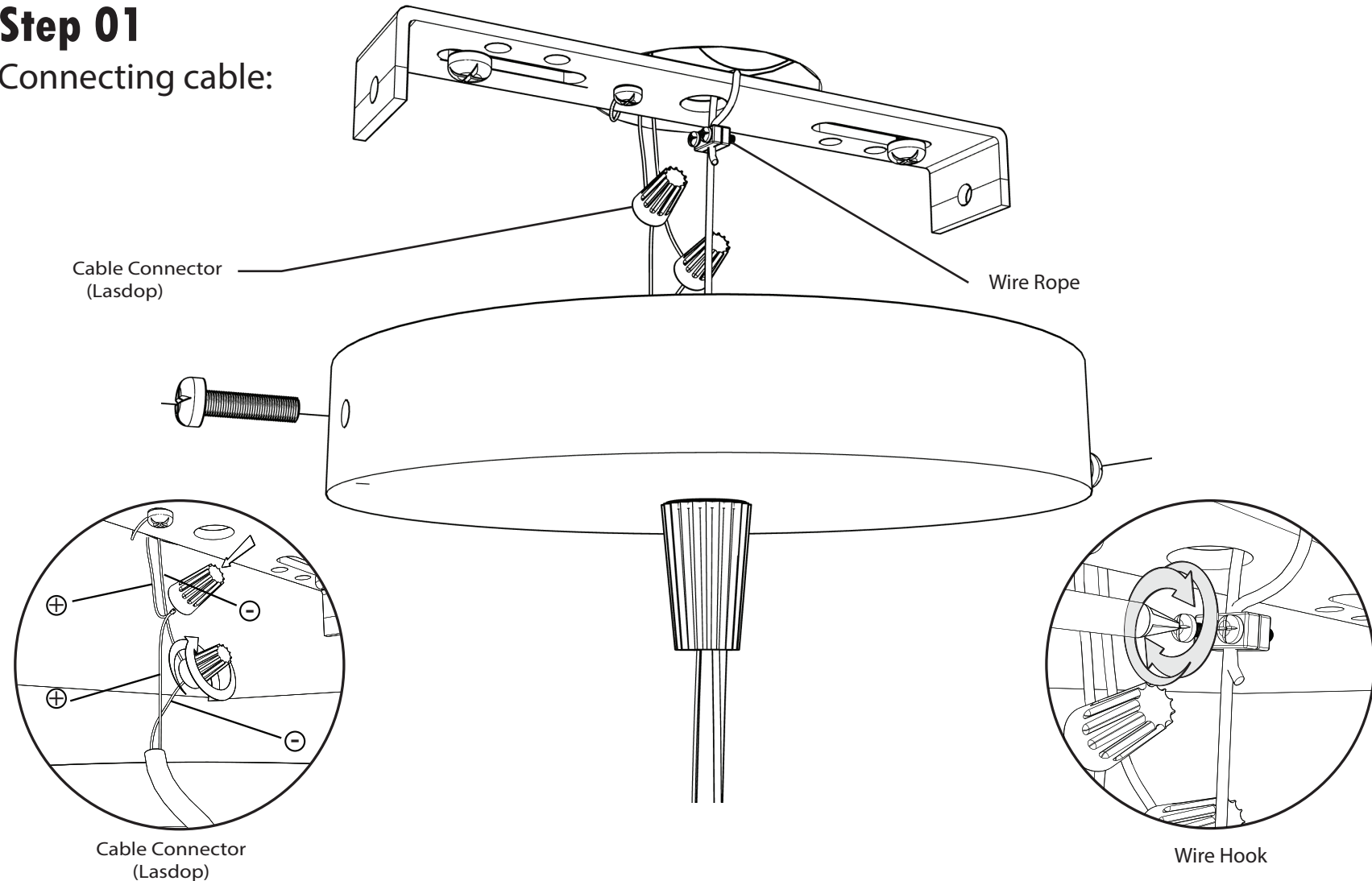


Additional Part Must be provided by customer:



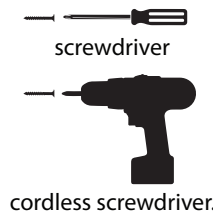
Step 01

Connecting cable:



CAUTION:

Tools Required: Phillips head screwdriver or screw bit



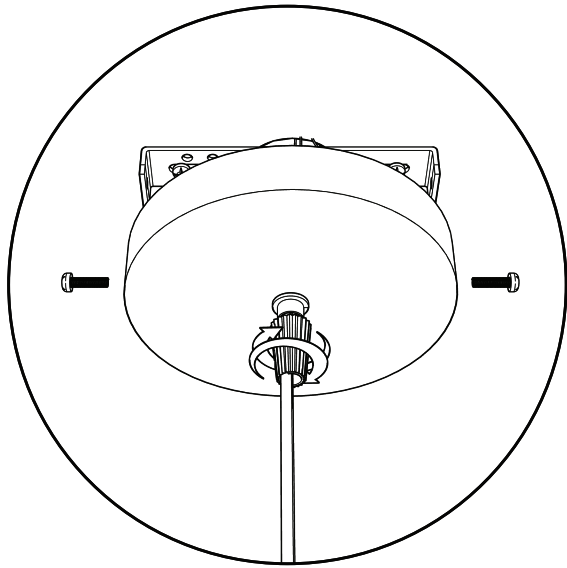
Assembly Steps:

1. Turn off power circuit And Tie overhand knot inside the Canopy.
2. Set the position of the lamp installation and then install crossbar (mounting bracket) first.
3. Connect Ground Cable to crossbar (mounting bracket).
4. Adjust the height of the chandelier and then Install the wire rope on the crossbar to hold the height of the pendant light.
5. Attach the positive wire to the positive wire and Negative wire to negative wire.
6. Connect matching cable with cable connectors and wrap secure with electrical tape.

Step 02

How to arrange hanging cables and wires:

CAUTION: For safety during installation,
Assembly must be carried out by two people.

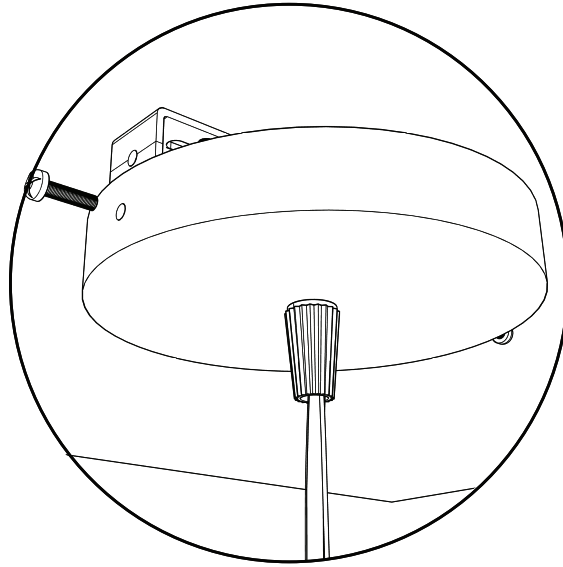


1. Adjust the height
of the chandelier cable.

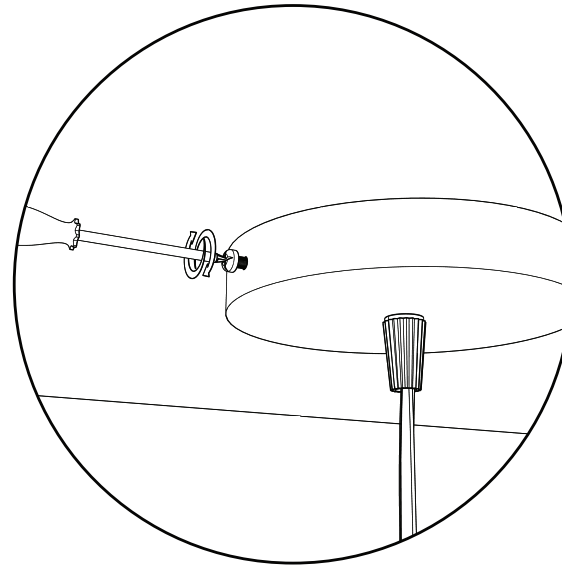
2. Adjust the length of the light
cable.

3. Before locking the cable,
for cable safety so as not to break during installation.
Adjust the slightly loosened wire from the chandelier
wire rope.

4. After that lock the cable at the bottom
of the canopy by turning it tightly.



5. Arrange the cables neatly before
installing the canopy.



6. Attach the canopy to the mounting
Bracket that has been installed
on the ceiling then bolt on the side
of the canopy.