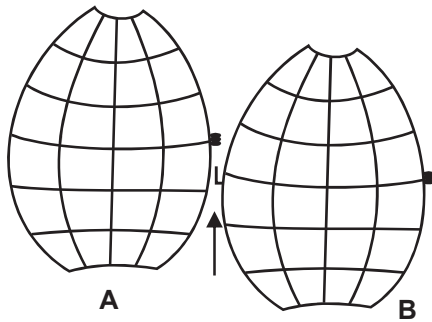
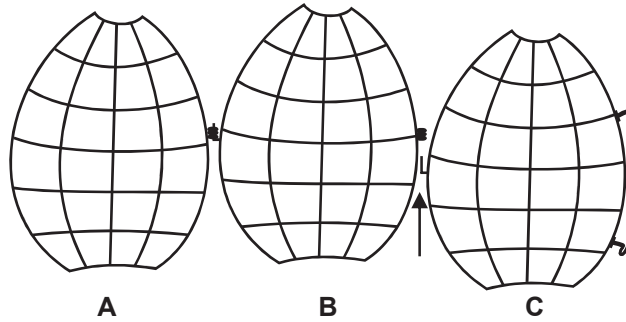


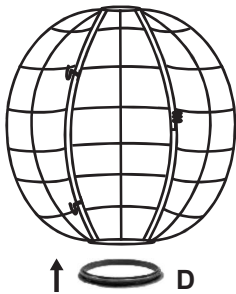
1. INSERT THE L HOOK, PROVIDED ON B, INTO THE NUT, PROVIDED ON A.



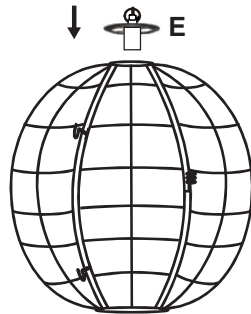
2. INSERT THE L HOOK, PROVIDED ON C, INTO THE NUT, PROVIDED ON B.



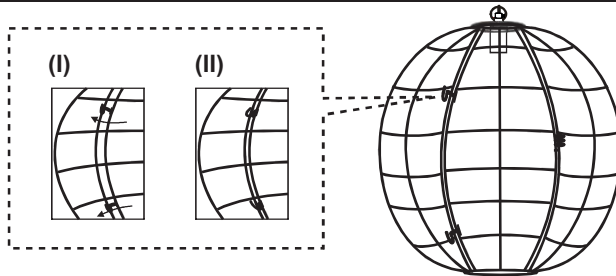
3. INSERT PART D INTO THE BASE OF THE ATTACHMENT (A+B+C). ENSURE THE CONNECTIVE BASE OF THE ATTACHMENT GETS FIXED IN THE GROOVE PROVIDED ON D.



4. INSERT PART E INTO THE TOP OF THE ATTACHMENT (A+B+C). ENSURE THE CONNECTIVE TOP OF THE ATTACHMENT GETS FIXED IN THE GROOVE PROVIDED ON E.

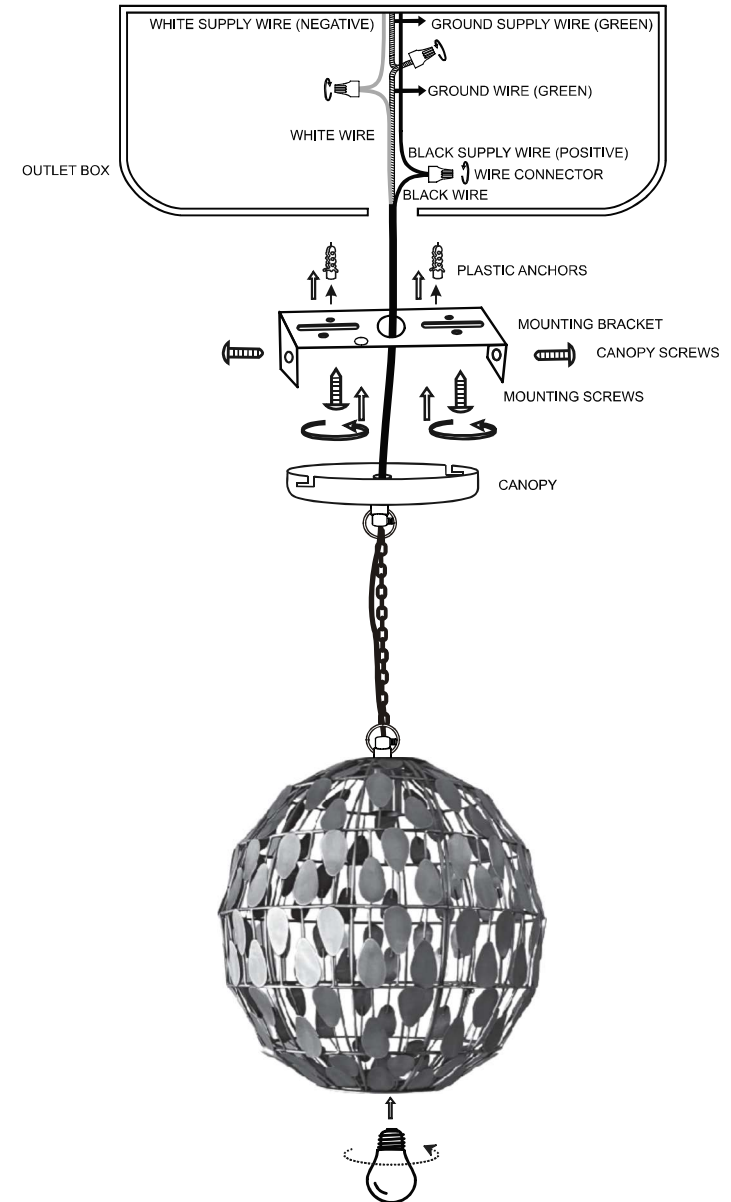


5. SHUT THE LATCH, PROVIDED ON PART C, AGAINST PART A. ENSURE THE SAME IS WELL FITTED



your global source for unique lighting + home decor

20942 Assembly



riverofgoods.com



your global source for unique lighting + home decor

READ & SAVE INSTALLATION & OPERATION INSTRUCTIONS

TOOLS & MATERIALS REQUIRED

Flat-blade screwdriver
Philips head screwdriver
Wire cutters
Wiring supplies as required by electrical code

CAUTION : Before assembling your Lighting fixture, refer to the section titled ELECTRICAL CONNECTIONS. If you feel you do not have electrical wiring experience, refer to a do-it yourself wiring handbook or have your fixture installed by a qualified licensed electrician.

GENERAL

1. To ensure the success of the installation, be sure to read these instructions and review the diagrams before beginning
2. All electrical connections must be in accordance with local codes, ordinances, or the National Electrical Code. If you are unfamiliar with methods of installing electrical wiring, secure the services of a qualified licensed electrician.
3. These fixture are intended to be mounted to a 4" x 4" x 2-1/8" deep metal octagon outlet box. The box must be directly supported by the building structure.
4. Before starting the installation, disconnect the power by turning off the circuit breaker or by removing the fuse at the fuse box. Turning the power off by using the light switch is not sufficient to prevent electrical shock.
5. Clean with a dry cloth, Use no solvents or abrasives. Avoid dampness on all electrical components.

PREPARE THE FIXTURE

NOTE: FIRST TURN OFF ELECTRICITY

Refer to the illustration of fixture parts and assembly.

1. If you are replacing an existing fixture, disconnect and remove the old fixture. Expose the supply wiring from the outlet box.
2. Fasten the mounting bracket to the outlet box using the two screws and plastic anchors supplied.

3. Push white, black and green wires through the mounting bracket.
4. Make electrical connections - SEE BELOW.

ELECTRICAL CONNECTIONS

Required Supply Circuit: 120V, 60 Hz
First proceed by identifying the wires on your luminary: The GROUND wire can be identified by its color (Green Wire)
The POSITIVE wire can be identified by its color (Black Wire), and the NEGATIVE wire can be identified by its color (White Wire).
Connect the luminary GROUND wire to the GREEN wire of the supply circuit.
Next, connect the luminary POSITIVE wire to the BLACK (live) wire of the supply circuit. Finally, connect the NEGATIVE wire of your luminary to the WHITE (neutral) wire of the supply circuit.
Use UL/CSA Listed wire connectors (included) suitable for the size, type and number of conductors. No loose strands or loose connections should be present. Secure wire connectors with ULCSA Listed electrical tape

FINAL ASSEMBLY

1. Spread the electrical splices so that the black wires are on one side of the outlet box and the white wires are on the other side.
2. Place the canopy against the mounting surface and attach the canopy to the mounting bracket using the canopy screws provided.
3. Attach the shade to the threaded stem of the electric holder using the holder ring.
4. Install bulb (not provided).
5. Restore electricity and check the operation of your lighting fixture.



MADE IN INDIA