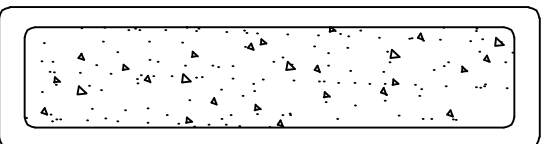
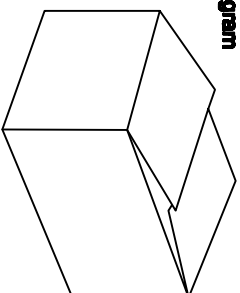


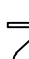

Installation Instruction



Packaging Diagram



Before Installation:

- ★ Please carefully read all steps.
- ★ Keep this manual for future reference.
- ★ Separate and list all parts and hardware.
- ★ Read each step carefully and follow the correct installation procedure.
- ★ To avoid losing any components during assembly, we recommend not moving the fixture until assembly is complete.
- ★ Keep all small parts and packaging materials of this product away from infants and children as they may cause serious injury.
-  LightingDirect.com
- ★ ★ ★ ★ ★
- 5-star rating
- Thank you 

★ speed street:

Light Source: LED Light Strip Watt: 3W(per) Color Temperature: 3000K

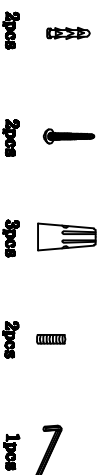
Installation Instruction Video:

YouTube URL: <https://www.youtube.com/watch?v=ZuZqDm8uKYo>

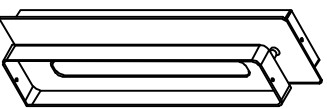


Scan Code:

Packing List



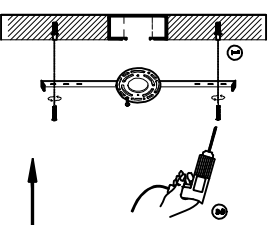
Lamp Body 1pcs



Alabaster Slices 1 pcs

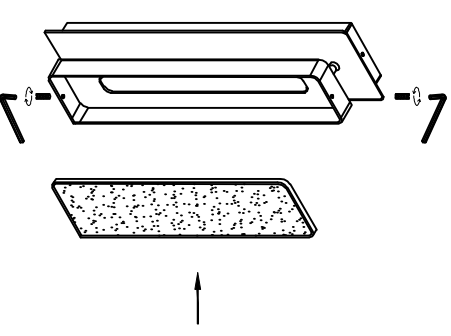


Installation of Hanging Board: Take out the hanging board and fix it on the wall where it needs to be installed with screws.



Marble Sheet Assembly:

1. Take out the marble sheet and put it into the lamp body.
2. Screw the screw into the lamp body and tighten the screw.
3. Turn on the light to test it.
4. Installation is complete.



Installation of Ceiling Lamp Body: Take out the lamp body, connect the main line of the lamp body and the power line, align the holes of the ceiling plate with the holes of the hanging plate screws, and tighten the screws.

