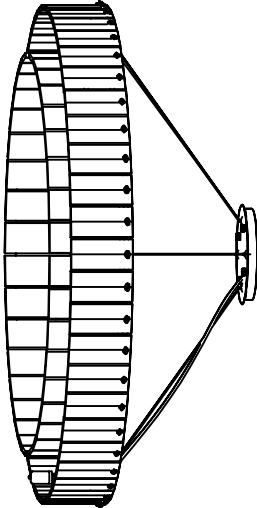
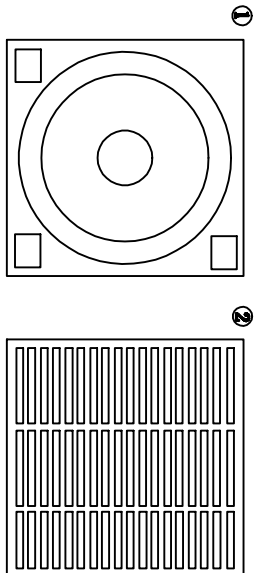
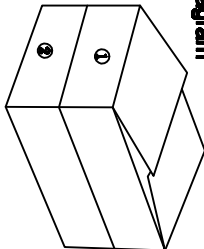


Installation Instructions



Packaging Diagram



Internal Packing List:

1.First layer: Main frame of the light body + G9 light source + accessory package.

2.Second layer: Cloud stone pieces.

Before Installation:

- ★ Please carefully read all steps.
- ★ Keep this manual for future reference.
- ★ Separate and list all parts and hardware.
- ★ Read each step carefully and follow the correct installation procedures.
- ★ To avoid losing any components during assembly, we recommend not moving the fixture until assembly is complete.
- ★ Keep all small parts and packaging materials of this product away from infants and children as they may cause serious injury.



★Notes sheet:

Light Source: G9*12 Watt: 3W(per) Color Temperature: 2700K

Installation Instruction Video:

YouTube URL: <https://www.youtube.com/watch?v=5k4rYUcU8>

Scan Code:

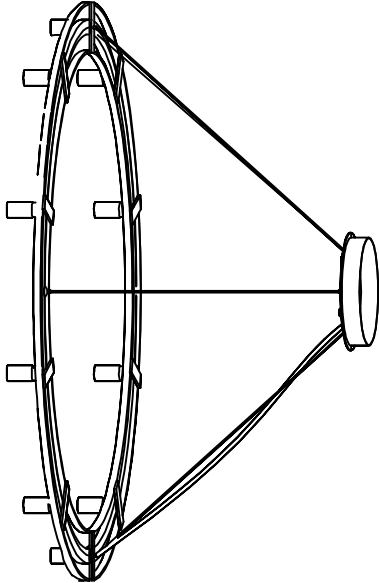


Assembly of the Light Source and Cloud Stone Pieces:

- 1.Take out the G9 light source and insert it into the lamp holder, then test the light by turning it on.
- 2.Remove the cloud stone pieces and fix them onto the light body using screws.
- 3.Install the longer cloud stone pieces on the inner ring and the shorter.
- 4.Installation is complete.

Accessory List

- A*4 B*4 C*4 D*3 E*86 F*38 G*48 H*12



Lamp Body

Installing the Light Body:

- 1.Measure the light body, connect the main wire of the light body with the power cable.
- 2.Align the holes on the light body with the screw holes on the bracket, tighten the screws.
- 3.Adjust the height of the steel wire.

