



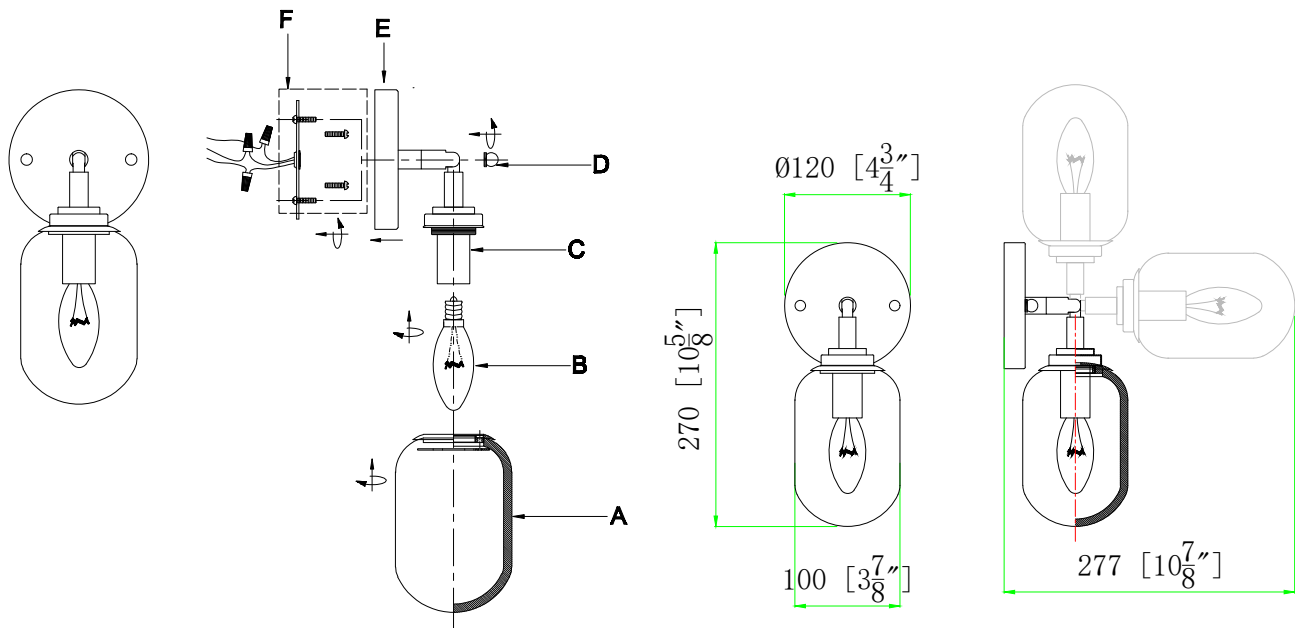
VIDALITE

DIAGRAM OF INSTALLATION STRUCTURE

SKU No.: CE1009388

Product Size:W4 3/4"*H10 5/8"*Ext 4 5/8

Light Source:B10 E12 Bulb



- A: Glass shade
B: B10 E12 Bulb(Not Included)
C: Fixture
D: Threaded caps
E: Backplate
F: Mounting hardware

Installation Instruction

1. Turn off the power.
2. Fasten mounting hardware(F) to junction box with machine screws.
3. Raise the fixture over to the wall and do the wire connection.
4. Tighten both threaded caps (D) to secure the fixture (C) to wall.
5. Screw recommended bulb(B) (B10 E12 Bulb, not included) into socket.
6. Install the glass shade(A) onto the socket.
7. After finish the installation, turn on the power.