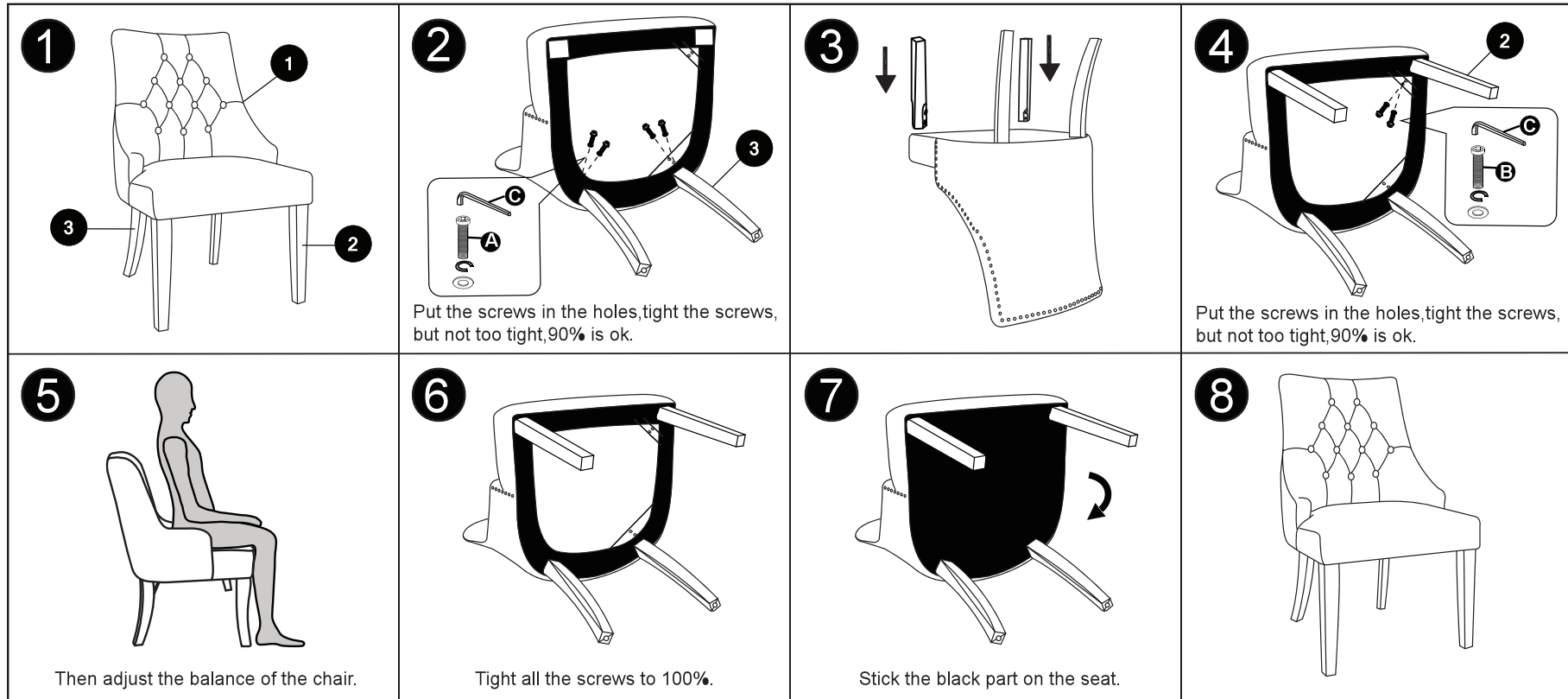





C169 ASSEMBLY INSTRUCTION



HARDWARE LIST	CODE	PARTS	QTY.
	1	BACK	1
	2	FRONT LEG	2
	3	BACK LEG	2

HARDWARE LIST	CODE	PARTS	QTY.
	A	M8x50MM 	4
	B	M8x60MM 	4
	C	ALLEN KEY 	1

Please find legs and hardware pack inside dust cover underneath seat cushion!