



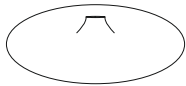
Care Maintenance

Spot clean using a mild water-free solvent. Only a professional cleaner should undertake a complete overall cleaning
The use of steam or water-based cleaners may cause excessive shrinking or staining.

Notice

- * Please make sure that you have all parts indicated before you begin assembly of this item
- * This item should be assembled on a soft surface to prevent scratching the finish during assembled
- * This item may require periodic tightening

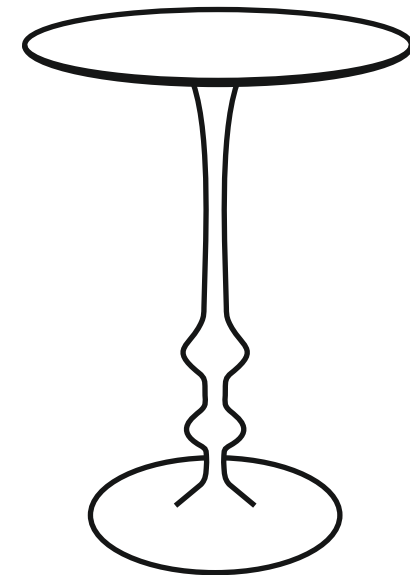
Part List & Hardware List

Piece	Description	Picture	Qty
A	Top		1 Pc
B	Pipe		1 Pc
C	Base		1 Pc

 **SAFAVIEH**
F U R N I T U R E

Item# FOX5520A

Product Dimension.: 17³/₄"W x 17³/₄"D x 19"H

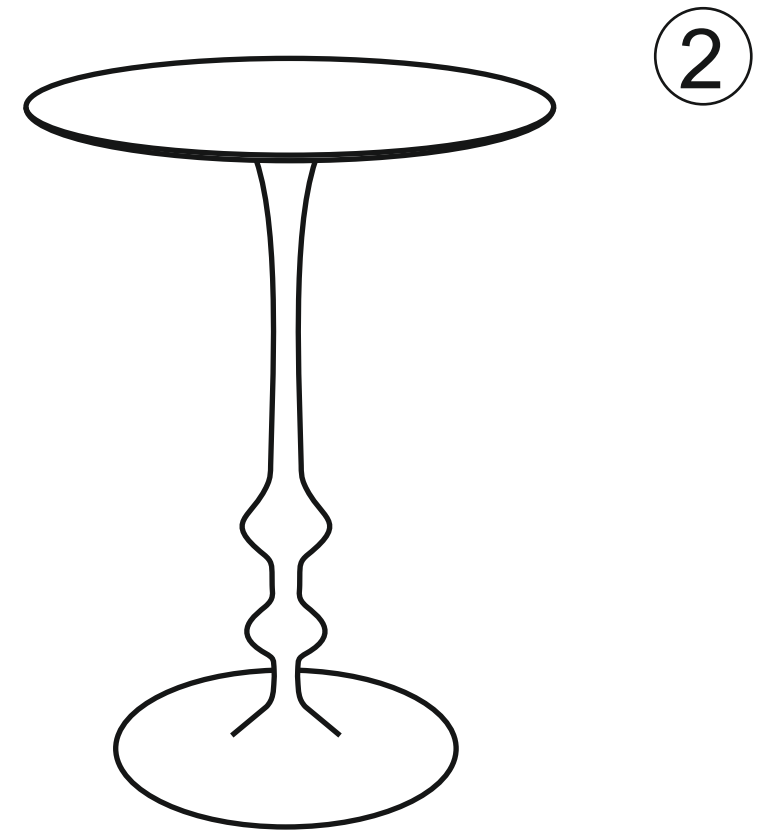
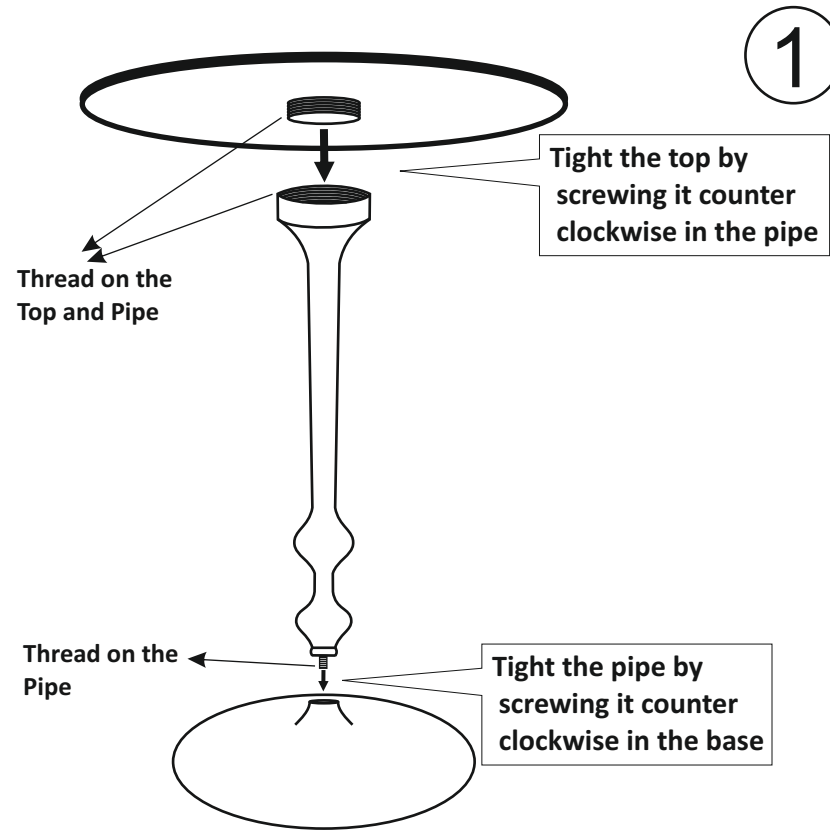


Weight Capacity : 75.00 LBS
Warning : Do not stand on table

PREPARATION

Before beginning assembly of product, make sure all the parts are present. Compare parts with package contents list and hardware contents list. If any part missing or damages, do not attempt to assemble the product.

Estimated Assembly Time : **5** minutes.



STEP 1 : TIGHT THE TOP BY SCREWING IT COUNTER CLOCKWISE IN THE PIPE AND TIGHT THE PIPE SCREWING IT COUNTER CLOCKWISE IN THE BASE