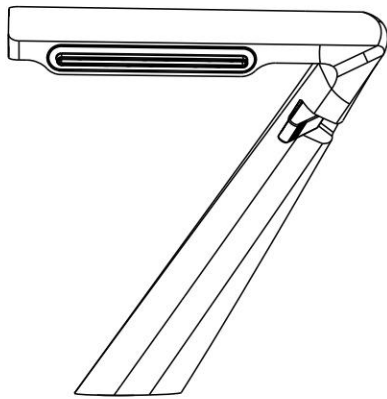


# SINGLE LEVER, SINGLE HOLE BASIN MIXER



## INSTALLATION AND USE INSTRUCTIONS

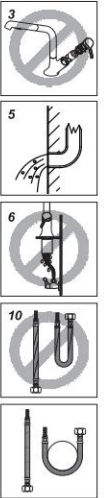
Our company is constantly working to improve the quality of our products, keeping pace with the times, and introducing new products. The product you have purchased may differ slightly from this manual. We apologise for any inconvenience caused.

## Installation Precautions



Thank you very much for choosing our products. In order to facilitate your use of our products, please read this manual carefully when installing the product.

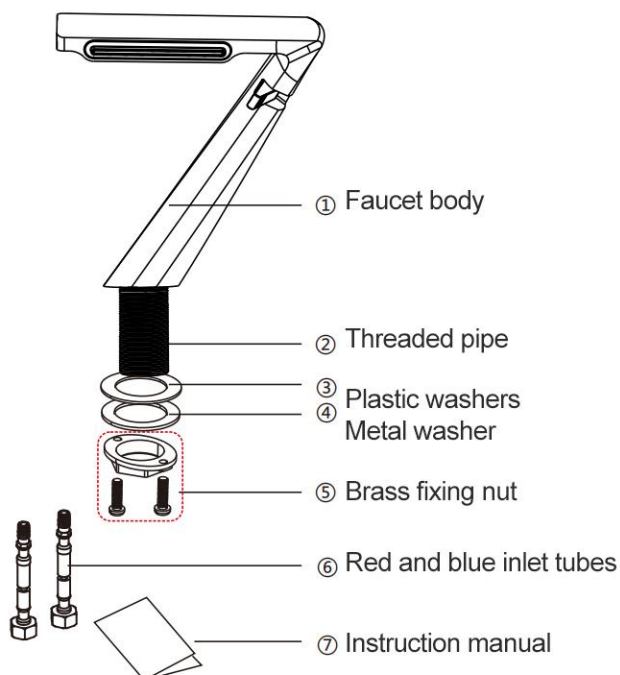
1. After opening the product package, please check whether the accessories are complete according to the accessories listed in the "Standard Accessories List". If there are any defects, please contact your local dealer immediately.
2. Purchase a basin that matches the basic installation dimensions of the product.
3. The main part of the main group of taps has been tested and commissioned by the manufacturer, please do not dismantle it yourself.
4. Special attention must be paid to the connection of the tap to the hot and cold water pipes: the red hose connects to the hot water and the blue hose connects to the cold water. If the connection is wrong, it will be opposite to the red and blue mark on the handle.
5. Before installing the tap, make sure to remove the impurities and sludge in the pre-built water pipe to avoid clogging and affecting the water function!
6. After installation, please turn on the water source, and then check whether the joints are connected tightly to ensure that there is no water leakage.
7. Inlet pressure requirements: 0.1MPa inlet pressure  $\leq$  1.0MPa.
8. The medium temperature is 4-90 degrees Celsius.
9. The torque of the nut joint should not exceed 10Nm.
10. The hose should not be over-bent to ensure that the hose is not deformed after installation.



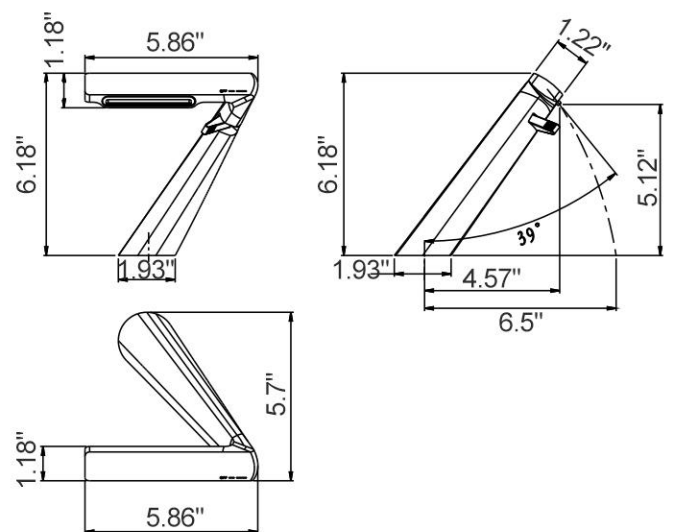
## Warm tips

1. It is recommended to install the faucet after two months of house decoration.
2. It is recommended not to install the faucet in a corrosive environment if you want to install it, please clean the surface of the faucet frequently, otherwise it will shorten the service life of the faucet.

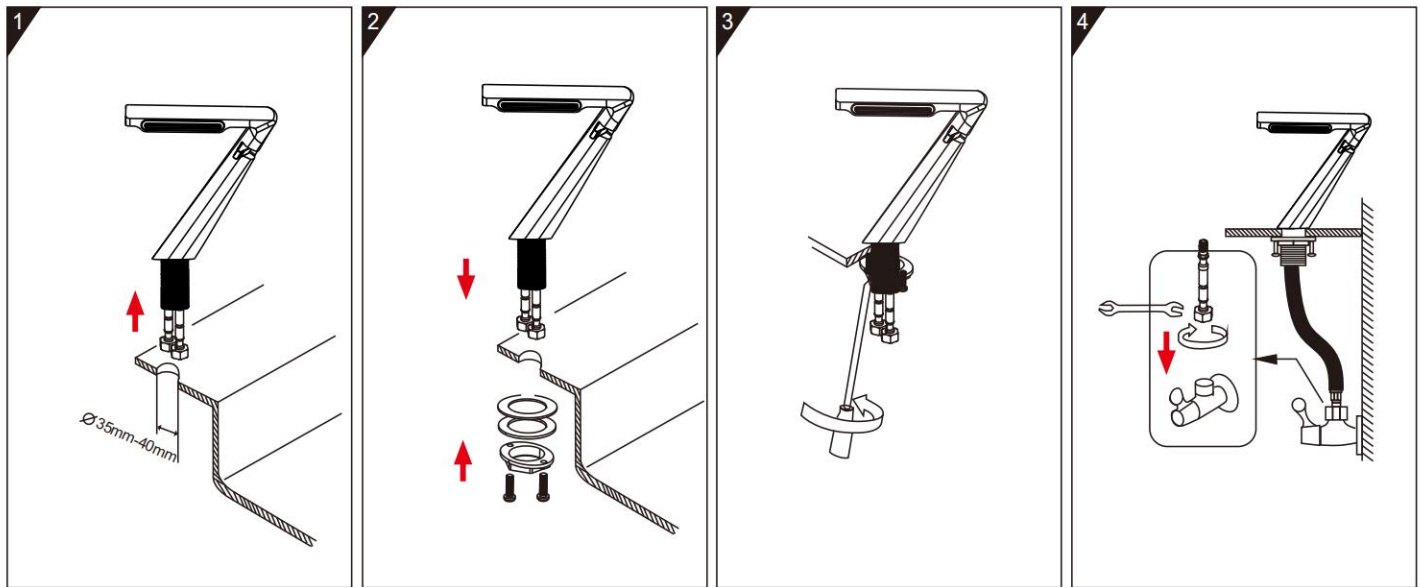
## Product accessories list



## Product size

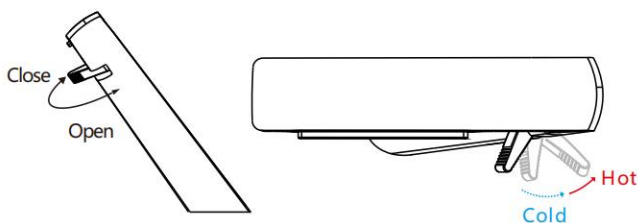


## Installation steps



1. Make sure there is a 35-40mm hole on the basin, and then remove the fixings on the mixer body. Screw the hot and cold pipes into the bottom of the mixer body.
2. Install the mixer body with the hose through the hole on the basin. Then install the fixings shown in Fig. 2 from the bottom to the mixer.
3. Hand tighten the fixing nuts and tighten the screws on the fixing nuts with Phillips screws.
4. Connect the two inlet hoses to the angle valves.  
(Follow the red and blue signals on the handle. Connect them to the corresponding hot and cold water valves.)

## Instructions for use



## Cleaning care

1. To keep the faucet clean and bright, please clean the faucet frequently or regularly.
2. Use only clear water to rinse and dry the faucet with a soft cotton cloth.
3. Shall not use detergent containing coarse particles such as stain remover or polishing powder, nylon brush broom, abrasive cloth or sandpaper, so as not to wear the product.
4. Do not use any detergent with acidic effect, or rough detergent or soap polish.
5. When the faucet water flow is significantly reduced, please clean the shower head filter and shower outlet glue grain holes, so as not to affect the shower outlet or clogging and bursting.  
Example: When the water flow from the shower part is obviously reduced or part of the pellet does not come out, please scrub the pellet by hand or use a sewing needle (toothpick) to pass through the pellet hole of the shower.
6. If you need to carry out a large amount of cleaning work, please follow the following procedures
  - a. Use water and a soft cloth to remove as much surface dirt and film as possible.
  - b. Use any of the following cleaning agents to remove surface dirt and film.  
Mild liquid cleaner.  
Colourless glass cleaner, non-abrasive and completely soluble powdered cleaner (mixed according to manufacturing instructions).  
Non-abrasive polishing liquids.  
Stubborn stains can be removed by bubbling with hot vinegar and scrubbing with wax or scrubbing with toothpaste or with Amway's special hardware cleaner  
To remove stubborn water stains, use a fresh lemon slice and rub it in a circle a few times to remove the stain, or use a well-watered orange peel to remove water stains. Use

## Consumer service guide

1. Five years from the date of purchase. Whenever the maintenance personnel of our factory confirms that the failure and damage are caused by manufacturing process or material problems under normal use, we can obtain free warranty service.
2. This free service does not include accessories, auxiliary devices, transport costs and maintenance personnel home service fee.
3. Quality warranty card is valid only if the date of purchase matches the date of the purchase voucher.
4. When repairing. Quality assurance card and the original invoice or other valid proof of purchase at the same time to take effect.
5. The following cases will not be entitled to free service.
  - A. Damage caused by repair or modification not approved by the factory
  - B. Damage caused by mistakes, negligent use or accidents.

