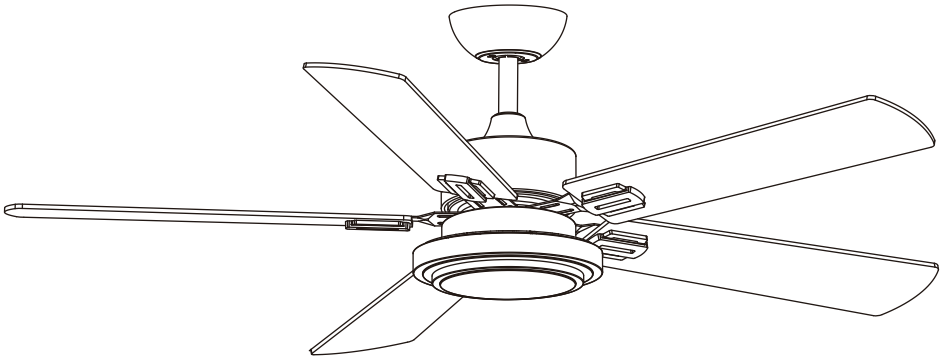


Ceiling Fan

Installation Instructions



THANK YOU

We appreciate the trust and confidence you have placed in us through the purchase of this ceiling fan. We strive to continually create quality products designed to enhance your home. Thank you for choosing us!

Safety Precautions

The information contained in the following pages has been prepared to ensure your maximum enjoyment of your fan

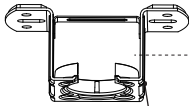
Please remove the fuse or turn off the circuit breaker to cut off the power before installing the fan. Ensure all electrical connections are in compliance with local laws, regulations and national electrical codes. If you are not familiar with electrical installation and wiring, please hire a qualified electrician or consult the wiring manual.:

1. For your safety, all electrical connections and disconnections should be performed by a qualified electrician.
2. Any action performed for the electrical connection of the device must be carried out after ensuring that the general power supply is disconnected, by removing the corresponding fuse or disarming the protective switch in order to ensure total isolation of the power supply.
3. When deciding where to mount the fan, be sure that there is at least 30 inches (76 cm) of space between the fan and any wall or other obstruction that the fan blades could collide with. The greater this distance, the more effective the air flow produced. After the fan is mounted, be sure that the blades are no less than 7ft (2.1 m) above the ground.
4. The anchor point for the fan must be able to support a weight of at least 100 pounds (45 kg). If mounting on a ceiling junction box, be sure that the fan is adequately supported to prevent loosening or turning.
5. The fan's electrical connection must be "grounded" (the fan's ground cable connected to the installation's grounding network) in order to avoid any branching that may be dangerous to people.
6. Do not connect the fan's power supply to any dimmers, potentiometers, or light switches, as it will cause the fan to malfunction and/or will damage the motor. The fan must be directly connected to a properly protected installation circuit (magnetothermal differential switch with the adequate size for the fan's consumption and technical specifications). Only use the fan's control to turn it on or stop it.
7. It is recommended to not use these types of fans along with gas installations simultaneously in the same room.
8. The fan must not be moving and must have come to a complete stop before changing its direction of rotation. This will prevent damage to its motor and to the control unit, when applicable.
9. Do not insert anything that could hit the fan's blades into its pathway while it is moving, as this could cause damage to people, can damage the blades, and can offset the balance of the unit, causing vibrations and wobbling.
10. After installing the fan, ensure that all fastenings are secure and tightened in order to avoid any noise caused by loose elements.
11. Due to the fan's movement, certain fastenings may become loose. Check all fastenings twice per year at a minimum in order to ensure that they are sufficiently tight. If necessary, they must be retightened.
12. The motor housing can be cleaned with a soft brush or a lint-free cloth to avoid scratching the surface. Clean the blades with a lint-free cloth. Important: Turn off the main power supply before starting any maintenance. Do not clean the fans with water or a damp cloth.

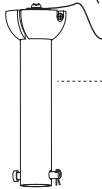
Note: The important warnings and instructions indicated in this manual are not guaranteed to cover all possible conditions and situations that may occur. It must be understood that common sense, precaution, and care are factors that cannot be included in all products. These factors can and must only be provided by the user who maintains and enjoys this fan.

Package Contents

Tools Needed



1.Bracket



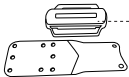
2.Down rod



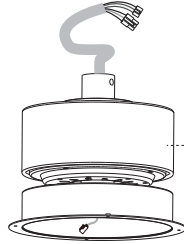
3.Canopy



4.Coupling cover



5.Blade holder



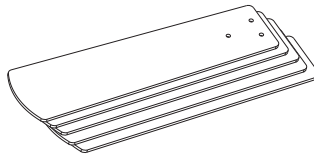
6.Body/motor



7.Light kit

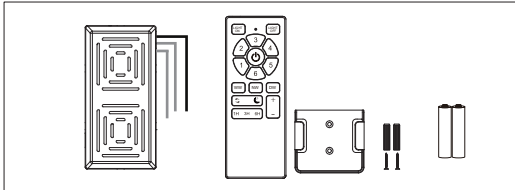


8. Light cover

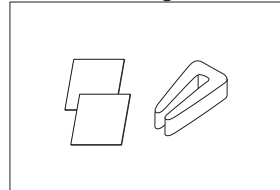


9.Blades

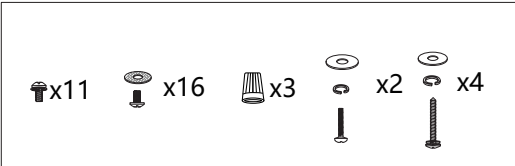
Remote control unit



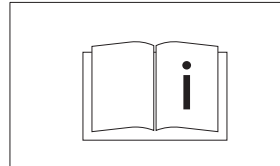
Blade balancing kit



Installation kit



Instructions manual

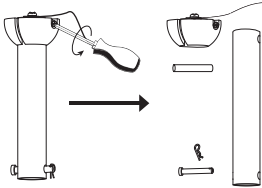


Note: The illustrations in this manual are for explanation purposes only and may differ from the actual unit. It is subjected to change without prior notice for further improvements.

Assembly Instructions

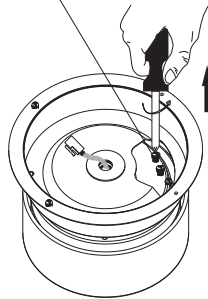
Step 1(Basic assembly of the fan)

① Decompose down rod.

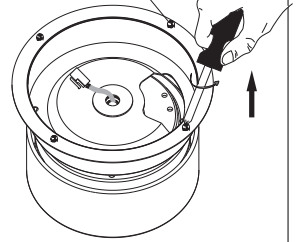


② Remove four screws from the fan body.

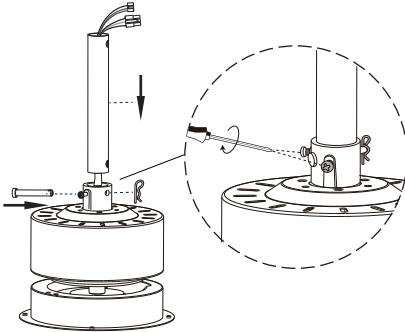
✚ ×8
Used to fix the fan blades



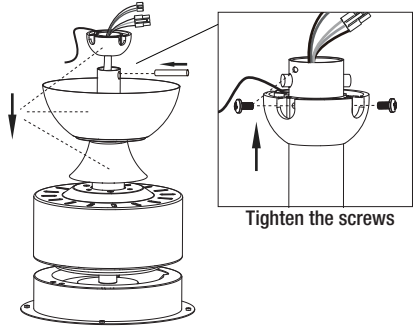
✚ ×4
Used to fix the light kit



③ Route all the wires from the motor the down rod through. Fix the down rod to the coupling with bolt, and then insert the clevis pin. Last tighten the two screws on coupling.



④ Assemble the canopy and coupling cover, hanging ball through the down rod. Then insert the fixing pin, push the Hanging ball up, and fix it with screws.

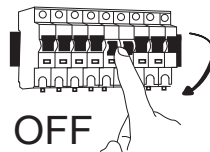


Step 2 (Installed bracket.)

① Turn off the fan power supply at the circuit breaker box and the wall switch.

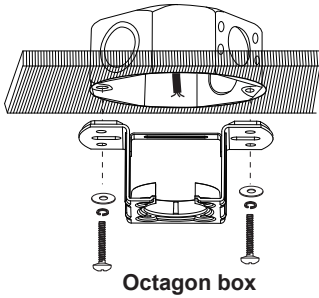


Failure to disconnect the power supply prior to installation may result in serious injury or death.

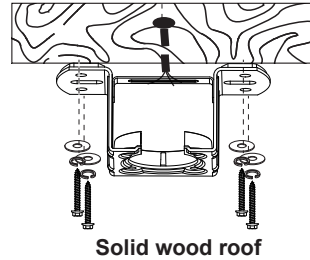


Assembly Instructions

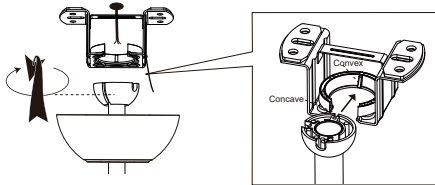
- ② Can be installed on $<10^\circ$ sloped roof.
Choose the following installation methods according to the actual situation of the roof.



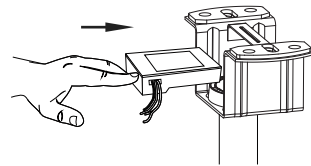
OR



- ③ Snap the basically assembled fan into the installed bracket.

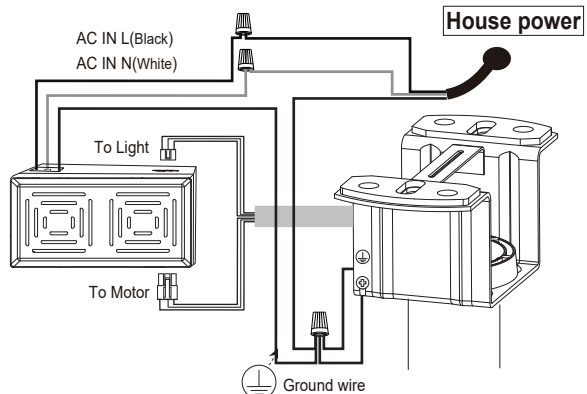


- ④ Put the receiver into the bracket.



Step 3 (Wiring .)

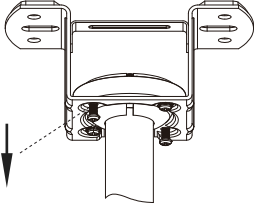
- ① Make the wire connection in accordance to the wiring diagram provided.



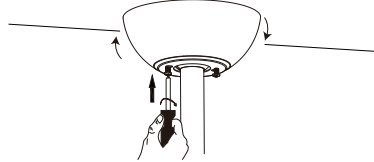
Assembly Instructions

Step 4 (Install remaining parts)

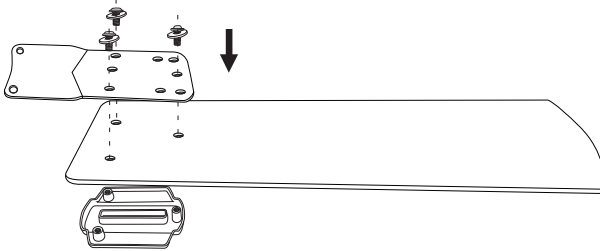
- ① Loosen two screws on bracket.



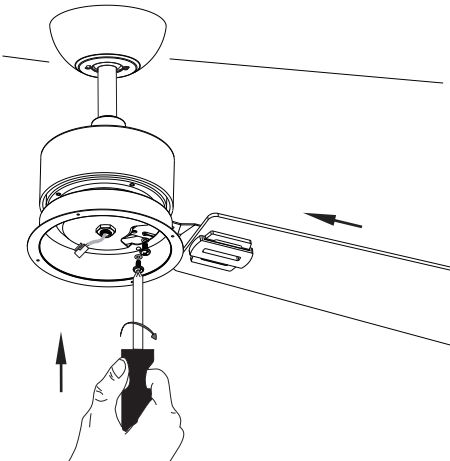
- ② Rotate the canopy clockwise until screw heads engage the key slots fully. Tighten the screws. Be careful not to damage or cut the wiring.



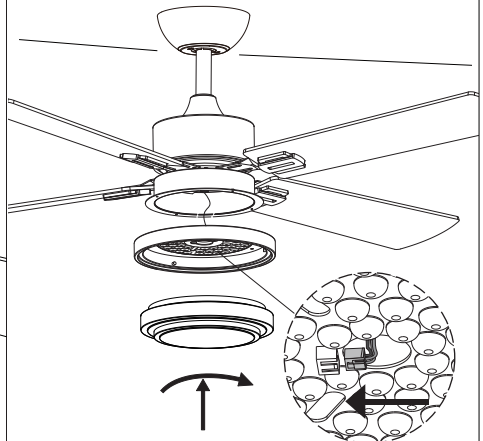
- ③ Align the hole between blade and holder, screw the holes tightly with screw and gasket.



- ④ Align the blades with the mounting holes, and then fix them with screws.

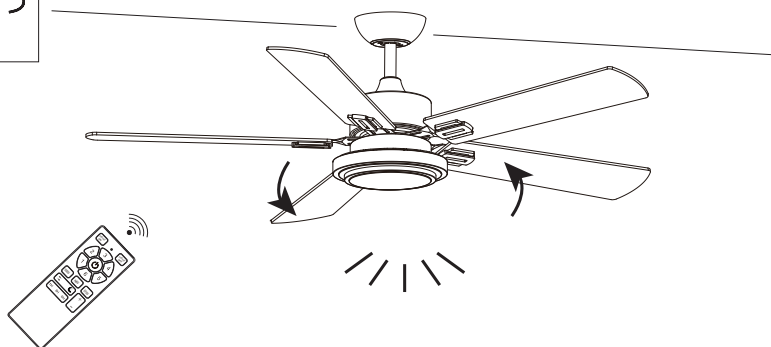
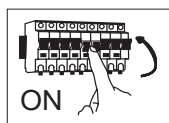


- ⑤ Connect terminal. Then fix the light kit to the main body with screws. Last installation light cover.



Assembly Instructions

Step 5(Switch on and ceiling fan works)



Remote Control Operation

Transmitter learning process

1. Insert the 2 pcs of batteries into transmitter.
2. Turn on the power supply to the fan. Within 10 sec, press and hold the "1" and "2" button for about 3 sec. Once the receiver has detected the frequency, receiver will "Beep Beep" twice. Programming process is completed and fan is ready to use.

Press and hold for about 3 sec

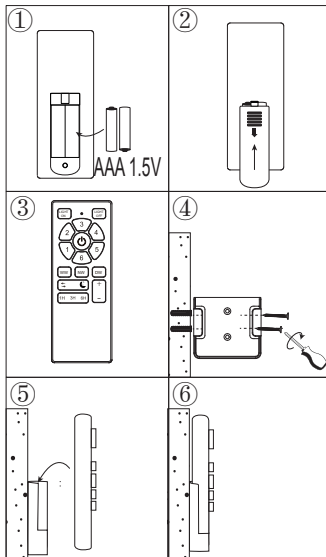


NOTE: The remote control device has already been code matching when it leaves the factory. If the fan is not responding to the transmitter, repeat transmitter learning process.

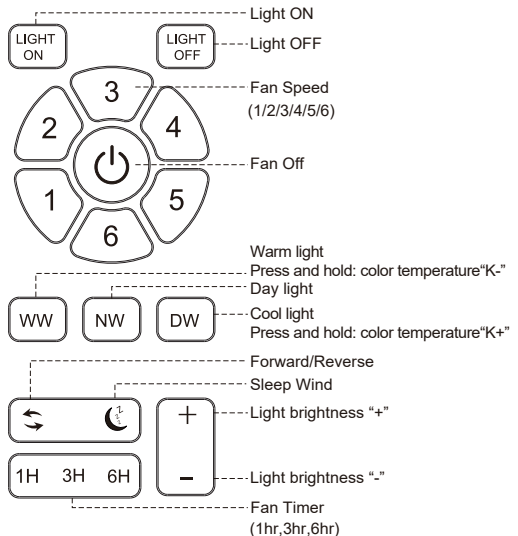
ABOUT THE MEMORY FUNCTION OF LIGHTS: Please wait for more than 3-5 seconds keep this color that you need at first, and then turn off wait for at least 10 seconds turn on again. This light color would be your need.

IMPORTANT: The fan can only operate normally after all blades are installed. If the fan is turned on without installing the blades, the receiver will detect that the fan speed is too fast and the fan will automatically stop.

Remote Control Holder Installation



Transmitter Function



TroubleShooting

Fan does not work	<ol style="list-style-type: none"> 1. Check all fuses or circuit breakers if disconnecting the power supply to the fan. 2. Turn off electrical power and check all wire connections to fan and in switch housing. It must be carried out by a electrician
Fan turns but airflow is inadequate	<ol style="list-style-type: none"> 1. The fan may be running in reverse, so air is going upward. 2. The room may contain items that obstruct the air flow. 3. The fan may be too small for size of the room.
Fan is noisy	<ol style="list-style-type: none"> 1. Assure that the screws fastening blade arm to motor are tight and the lock washers provided for that purpose have been used 2. Lower the upper canopy to ensure a separation from the ceiling of no less than 3mm to reduce noisy 3. Check to see if any of the blades are cracked .If so, replace all of the blades 4. If this is the first use ,leave the fan on for at least 8 hours. In the event that mechanical noise continues after this period, contact certified electrician

Balancing – Wobbling problems during fan operation

If the fan body wobbles during its operation, this is not a sign of malfunctioning (even if it wobbles a few centimeters). To reduce wobbling, you can turn off the fan, and:

1. Check that all blades are properly fastened by tightening their screws.
2. Check the distance between each blade and the ceiling. Measurements to the ceiling can be carried out as shown in the following diagram. If variations exist and you have already correctly tightened the screws, check that all blades have the same shape. If any of them have a shape that is visibly different, this may be causing an imbalance during fan operation.

If you have completed the previous steps and the wobbling has not resolved, you should apply dynamic balancing with the kit provided, as explained below:

1. Turn the fan on to the highest speed so that the greatest amount of wobbling is produced.
2. Turn off the fan. Select a blade and place a clip on it (see diagram) halfway between the fastening and the far edge of the blade.
3. Turn on the fan and check whether the wobbling has improved or gotten worse. Turn it off once again and if the wobbling has not improved, place the clip on another blade. Repeat this process and determine on which blade it improves the wobbling.
4. Leave the clip on the blade that produces the best results. Move the clip forward or backwards on this blade until finding the position that offers the best results.
5. Afterwards, remove the clip and place one of the weights on the upper part of the center line of the blade at the position where the clip was located.

