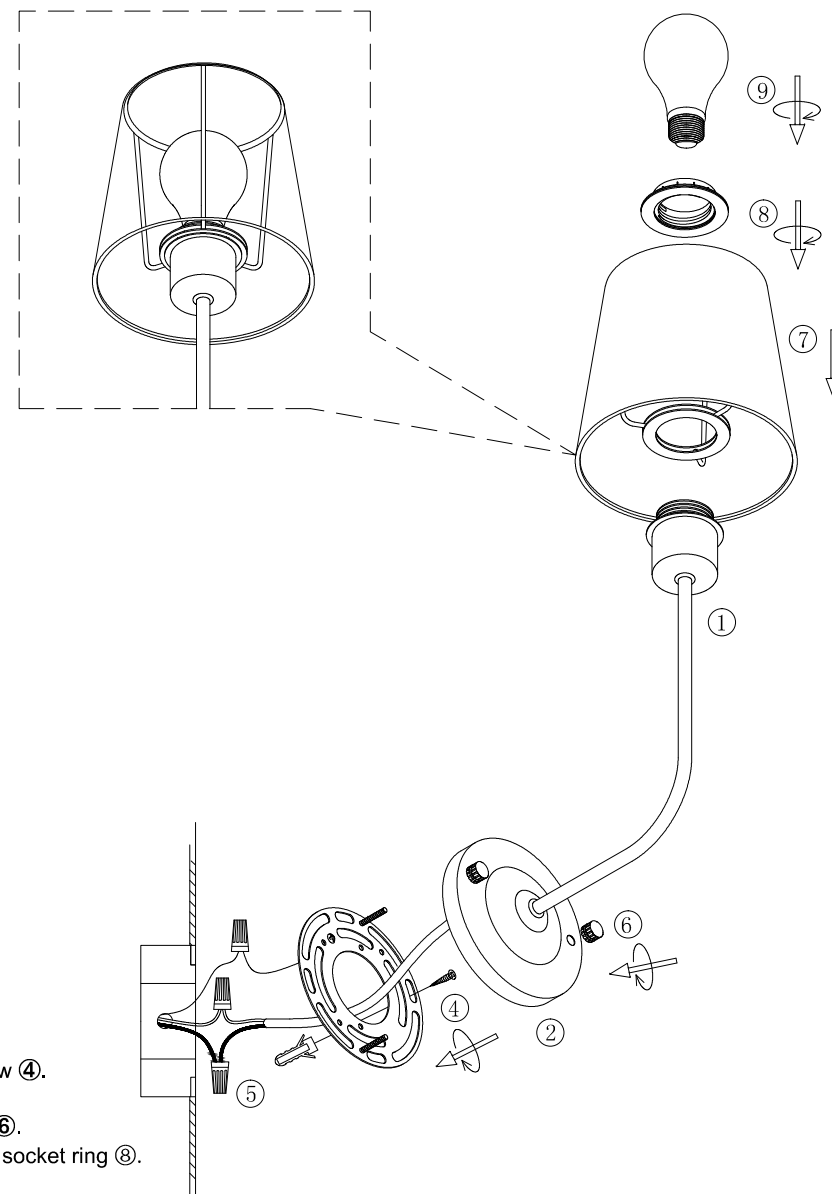


1. Let the wire go through canopy ②, teeth lock washer, ground wire, lock nut, rotate the lock nut to fix the canopy to the fixture ①.



2. Install the bracket to the junction box with screw ④.
3. Connect the wire to your home line.
4. Install the fixture to the bracket with cap nuts ⑥.
5. Install the lampshade ⑦ to the bulbholder with socket ring ⑧.
6. Install the bulbs ⑨.

B0164-1

Please read carefully before installation!!!

Note : Please make sure that the electricity is powered off during installation !

Only a professional electrician should install this kind of product !