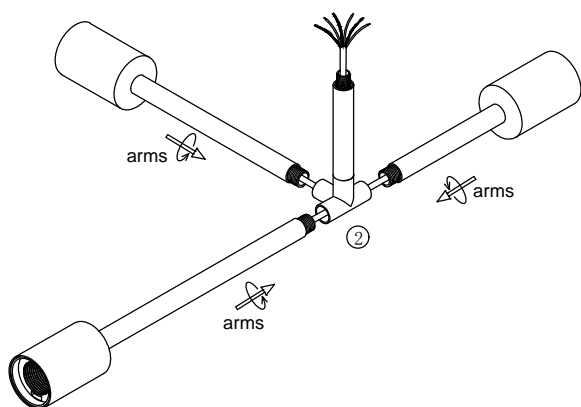
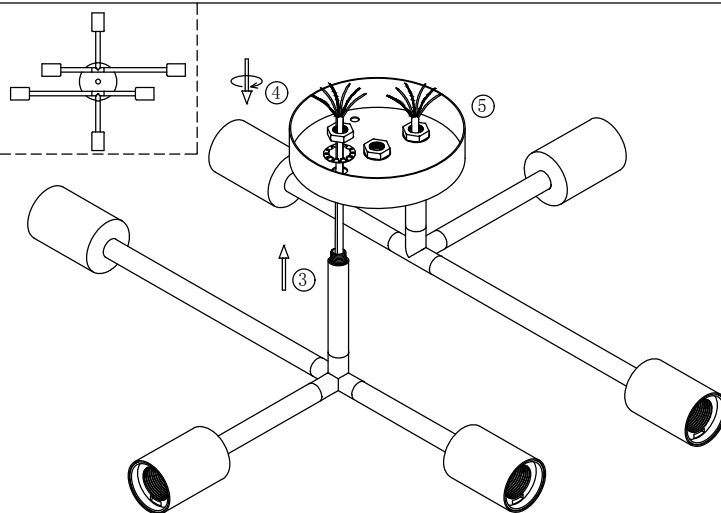


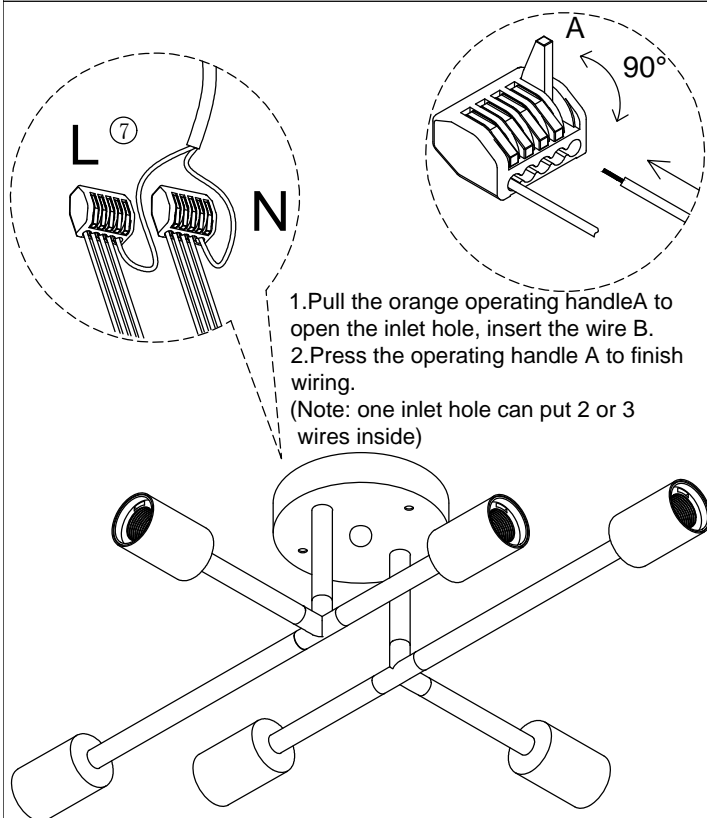
Do not pull out the wire when assemble the light arm!!!



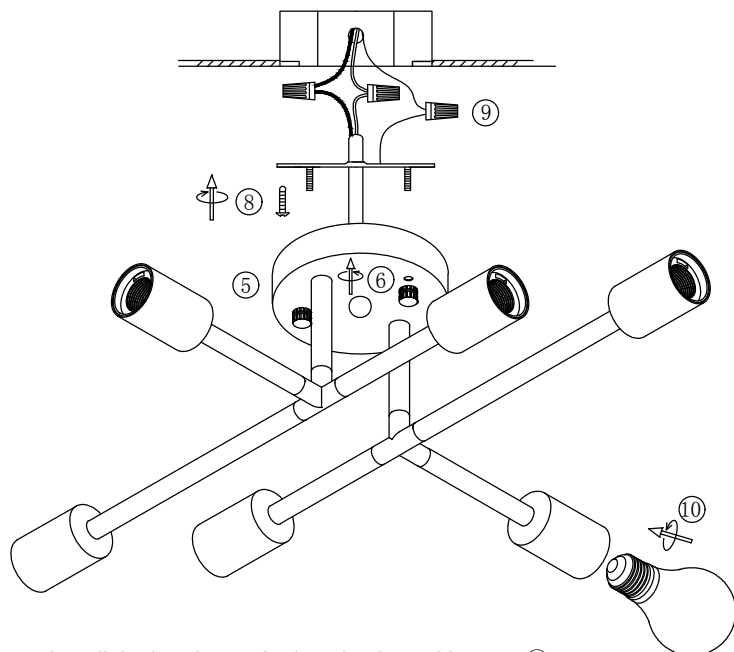
1.Rotate to fix the arms to the 4-ends connector ②.



2.let the wire go through the canopy ⑤, lock the tube ③ to the canopy ⑤ with lock nut & teeth lock washer ④.



3.Connect all the wires by parallel with connectors ⑦(all live line-L use one connector, and neutral Line-N use another connector).



4.Install the bracket to the junction box with screw ⑧.

5.Connect the wire to your homeline.

6.Install the light fixture to the bracket with cap nut ⑥.

7.Install the bulbs ⑩.

X0122S-6

Please read carefully before installation!!!

Note : Please make sure that the electricity is powered off during installation !

Only a professional electrician should install this kind of product !