

## WARRANTY

We strive to offer high-quality product and we also try our best to satisfy each customer that orders from us with product or service as needed.

Each customer a record of their order such as the order number ,or item receipt for any items that are out of the warranty period you may also still receive replacement parts by purchasing them with our company if they are available.

**Are you having difficulty  
with assembly? Missing parts?**

**Please contact us : [info@firstopintl.com](mailto:info@firstopintl.com)**

**telephone No.:5627813327**

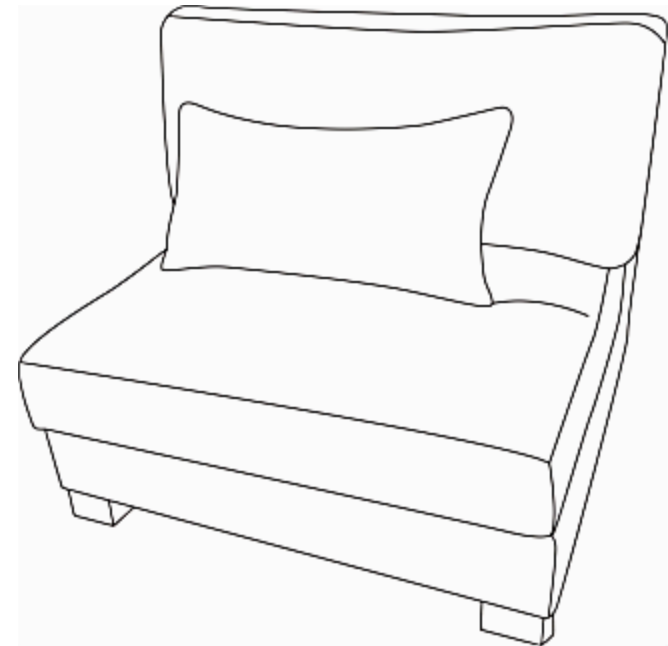
**send an email with your order No. to us**

**For return, please check the return policy with  
the retailer or market place you bought from.**

**Appreciate your purchasing from us.**

**Pop up your life by our furniture !**

# uixe



**ITEM NO.CS0006-ARMLESS**

### NOTE:

This brochure contains IMPORTANT safety info. Please read and keep for future reference.

# MAINTAINANCE AND WARNING

- Keep furniture away from heat and fire.
- Keep furniture away from sharp objects.
- Do not clean furniture with harsh cleansers or polish. Do not use detergents, Solvents, abrasives, spray packs or leather cleaner. Use non-color mild soap with warm water clean spills(Mix 1:10 soap to water)
- Do not place furniture under direct sunlight, material will possibly fade over time.
- Do not jump or strike on the furniture.
- Do not write on furniture without a padded barrier to protect the surface.
- Not for commercial use, For residential use only.



Weight Limitation

**400LBS Per Seat Unit**

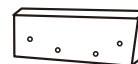
# PARTS LIST

A\*1



Seat cushion packed  
in compression bag x1

C\*1



Backrest frame

E\*1



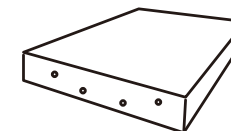
Headrest

B\*1



Back cushion

D\*1



Sofa frame

F\*1



Pillows

# HARDWARE and TOOL LIST

G\*4



Sofa foot

H\*1



Allen key

I\*4



Screw&shim

One of them is a backup

J\*1

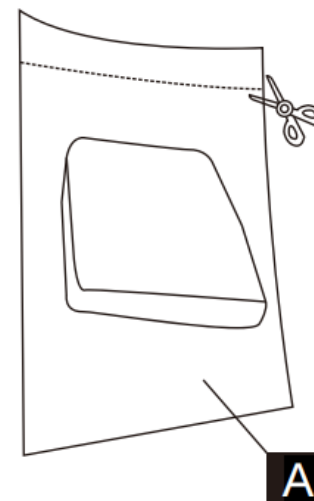


Hook

Be sure to check all packing material fitting the packing list. Be careful for small parts, which may have come loose inside the carton during shipment.

# ASSEMBLY INSTRUCTIONS

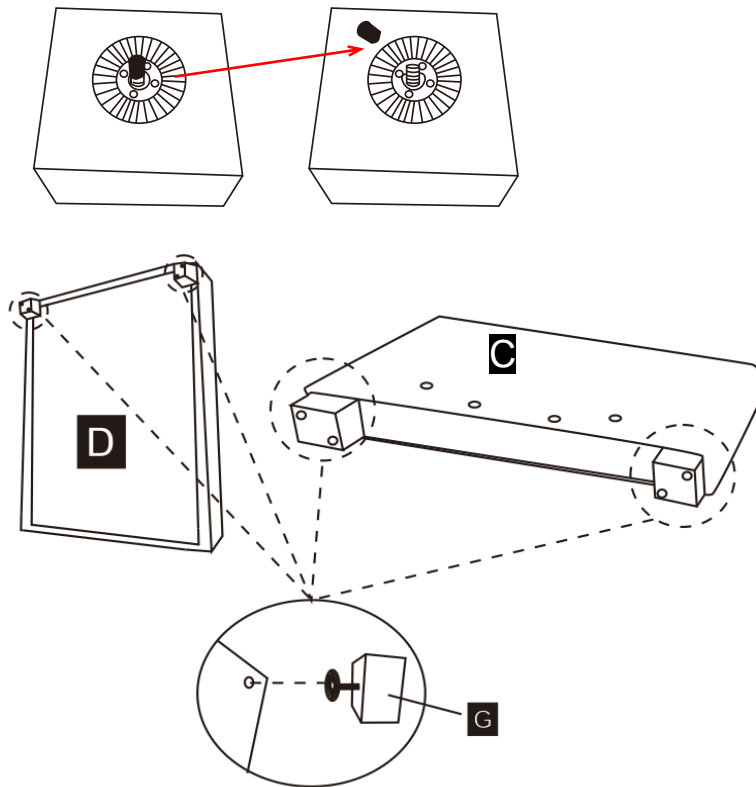
## step1



Take the cushion out of the compression bag and allow it to recover for a period of time, it takes about 24 hours for the cushion to fully recover, and you can slap the cushion to speed up the recovery.

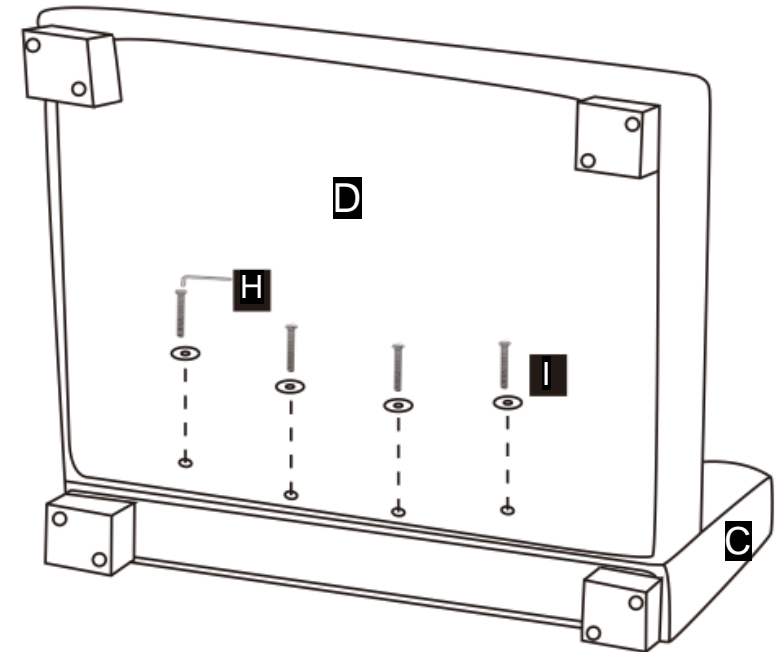
## step2

Remove plastic covers from the top screws of BOTH sofa legs



Place the bottom of the sofa frame and backrest frame upward on a clean place, align the screw of the wooden foot with the screw hole reserved at the bottom of the sofa and rotate clockwise to install the wooden foot firmly.

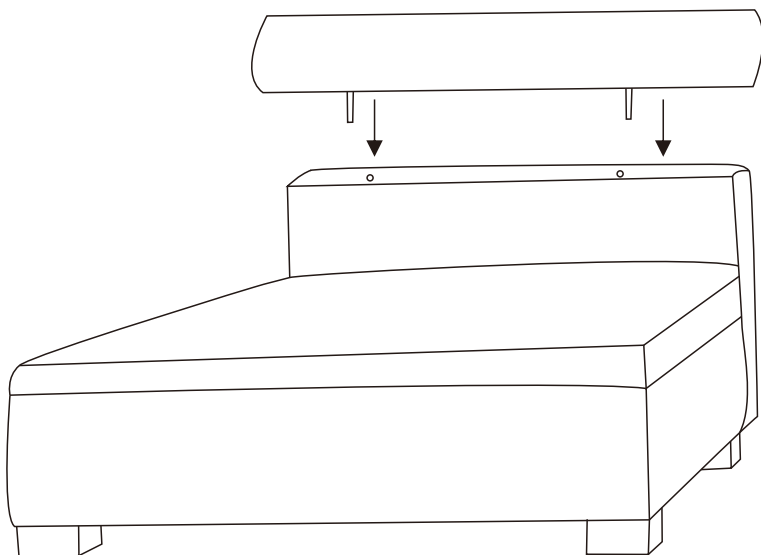
## step3



Place the backrest frame(C) as shown, find the side with four screw holes, then put the sofa frame(D) close to it. Make sure all holes on both frame(D) and backrest(C) are aligned, then use allen key(H) provided to twist in the screws(I). DO not tighten the screws until all four screws are aligned and twisted correctly.

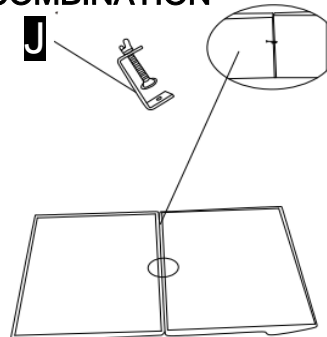
## step4

The headrest has three heights to adjust, and the height of the headrest can be adjusted according to your needs. Lift or press the headrest into the desired gear. If the metal dowel brings out the plastic core in the hole during the adjustment process, this is because the metal cover above the assembly hole is not tightened, you only need to remove the plastic part from the metal dowel, insert the small head downward into the hole, and then tighten the metal cover. **E**



## step5

### ARM CHAIR+ARMLESS COMBINATION



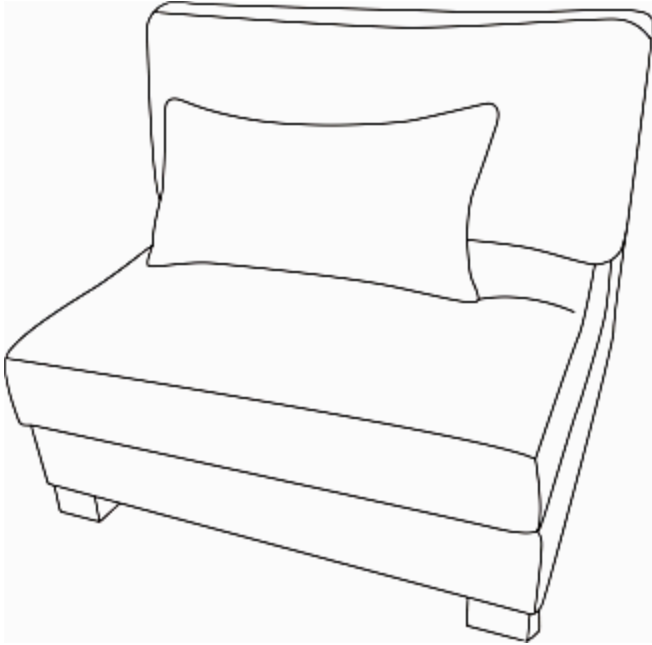
One hook in each seat spare parts bag

If you are using a unilateral sofa, this hook is not useful.

If you purchased the armchair and need to use the armchair and armless sofa together, please place the bottom of the sofa upward on a clean plane before the rod pillow at the top of the back is inserted, align the left and right unilateral sofa before and after and try to keep it close, use the metal hook in the packing box, seize the combined sofa 20 cm away from the front and back of the sofa, and then tighten the screw. Turn the assembled sofa tightly together, face up, and insert the cylindrical pillow.

Since there is a sponge on the outside of the wooden frame of the sofa, the two parts need to be squeezed tightly when fixed with the buckle.

## step6



Clean the excessive thread ends on the sofa frame. Tidy up the cushion and pillow of the sofa to make it beautiful and the assembly is completed.