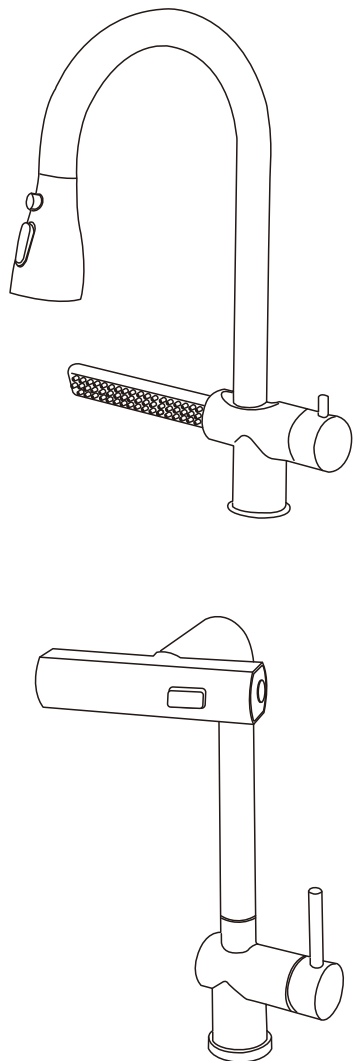


Installation Guide



MB/BN

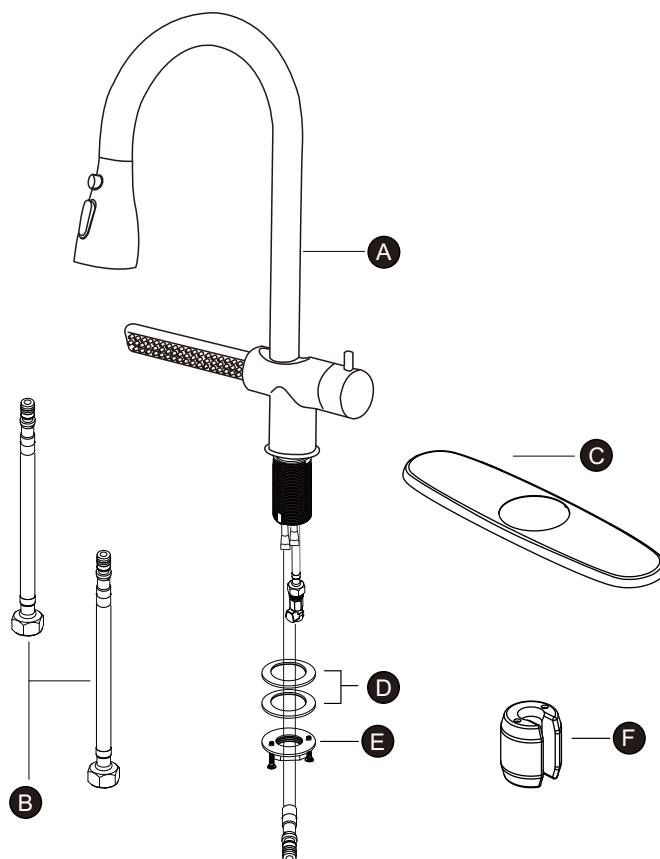
CARE INSTRUCTIONS

Rinse the product with clear water. Dry the product with a soft cloth.

DO NOT:

Use abrasive cleansers, cloths, or paper towels. Use any cleaning agents containing acid, polish, wax, alcohol, ammonia, bleach, solvent or any other corrosive or harsh chemical cleansers.

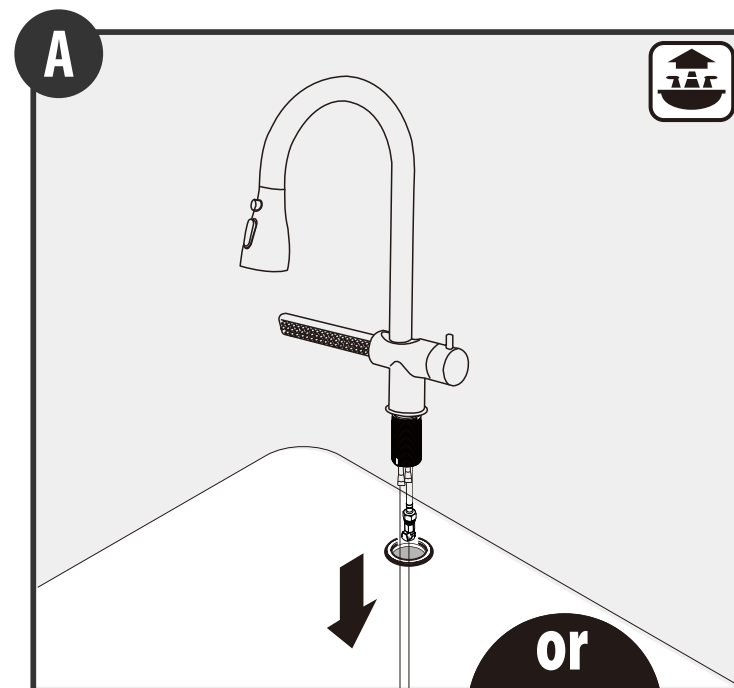
Package Contents



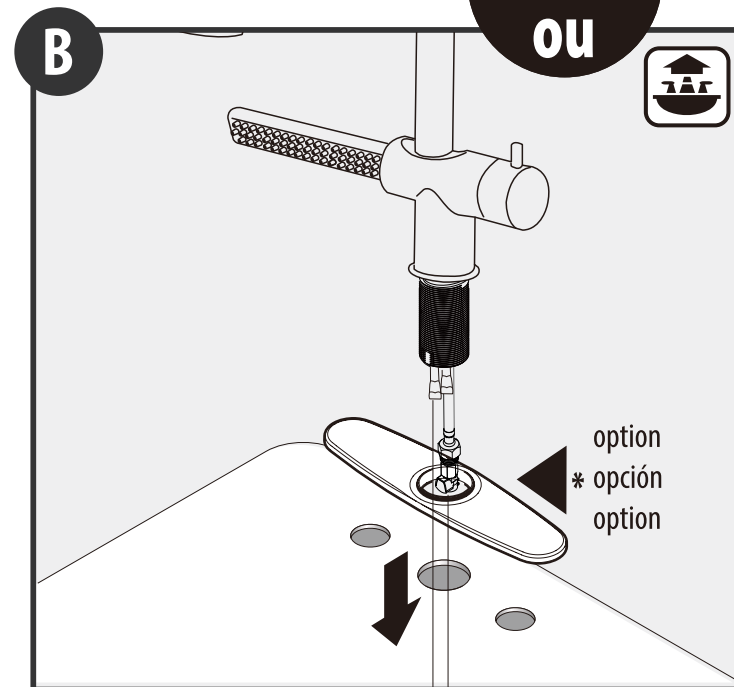
No. Description

A	Faucet Body
B	Cold / hot supply line
C	Escutcheon
D	Rubber Washer
E	Mounting Nut
F	Gravity ball

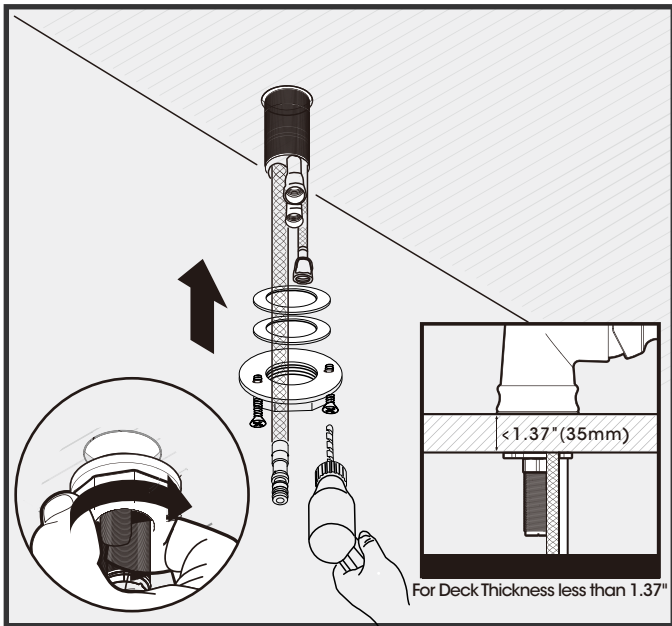
Installing the faucet assembly



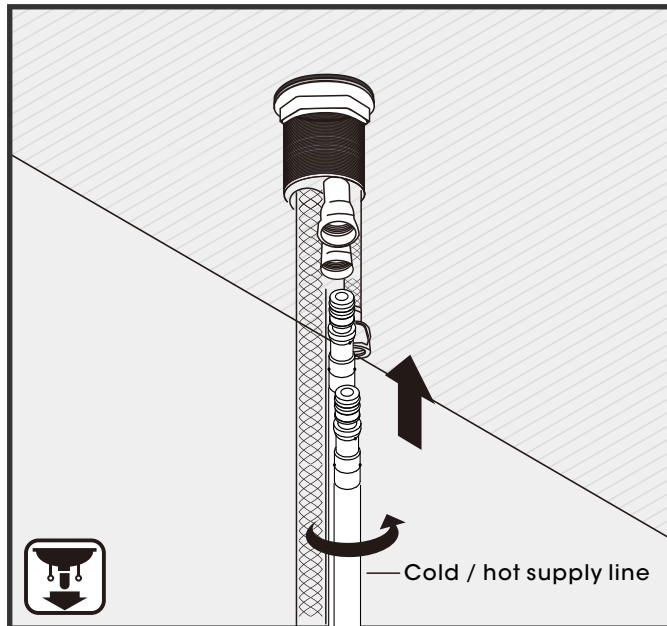
or
o
ou



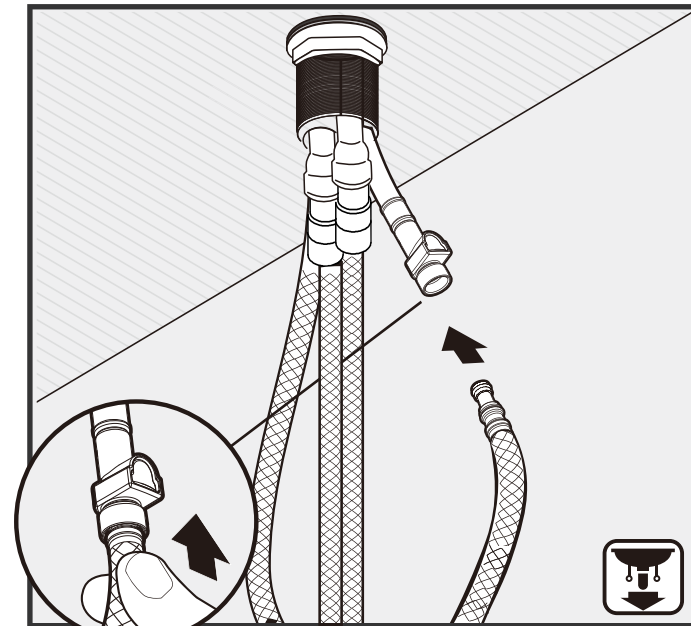
option
* opción
option



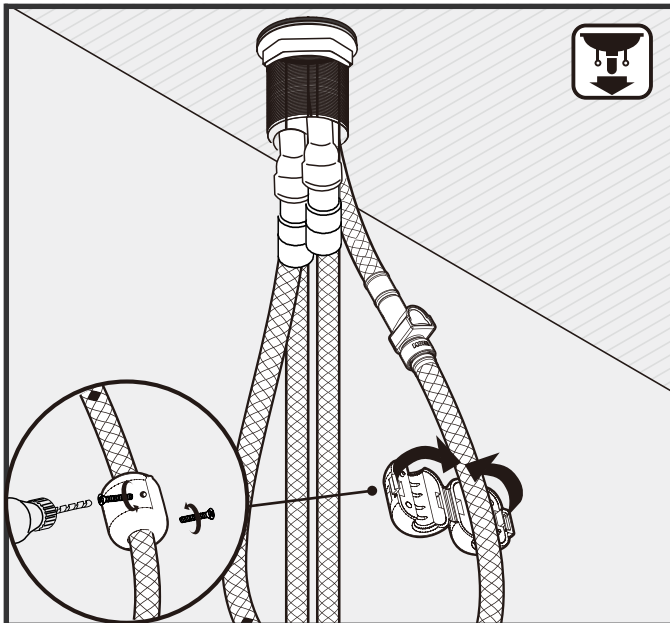
From underneath the sink, Push the faucet assembly up over the threads until it stops against the bottom of the sink, then hand turn (clockwise) to tighten. secure the faucet assembly to the sink .



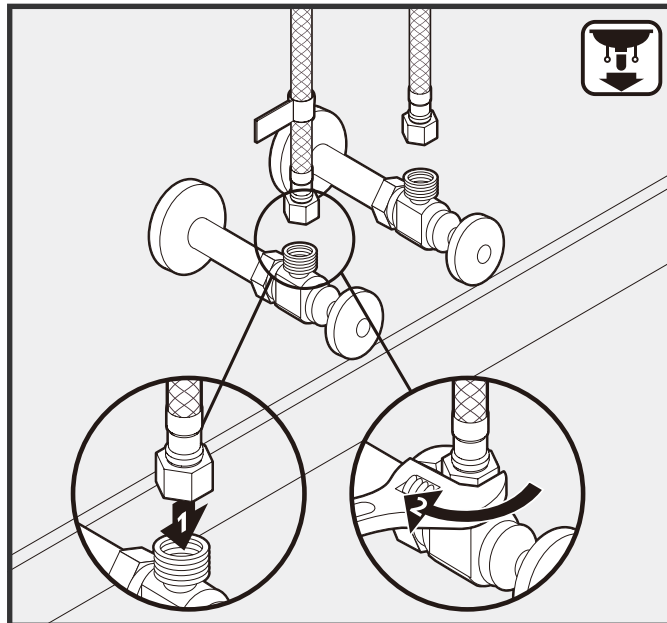
Connect the supply hose into the main water inlet hole.



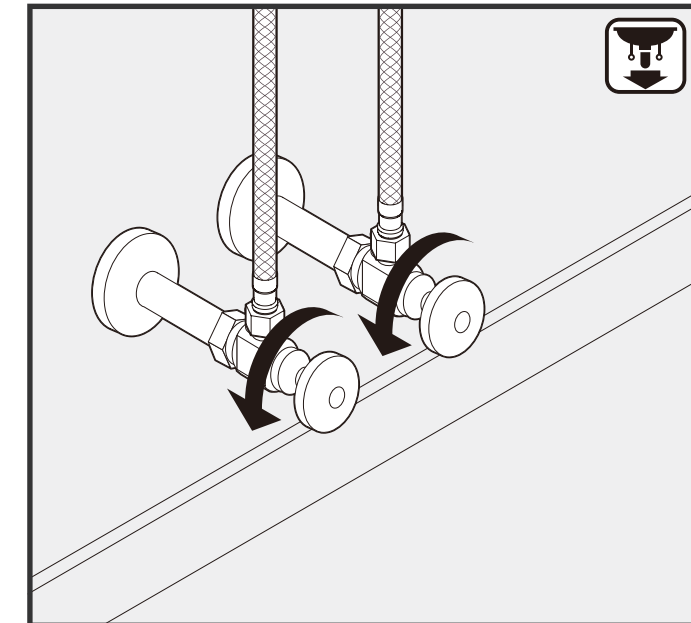
Push the quick connector firmly upward and attach it to the receiving block. Pull down moderately to ensure the connection has been made.



The closer the gravity ball is to the quick connector, the better the effect.



Attach flexible supply lines to shut off valves. Tighten with a wrench.



Turn the water supply line valves on and check for leaks.