

# INSTRUCTION MANUAL

Thanks for chose our light. Please read carefully before installation!!!

**Note:** 1.Please make sure that the electricity is powered off during installation !

2.Only a professional electrician should install this kind of product !

## Package List



x 1



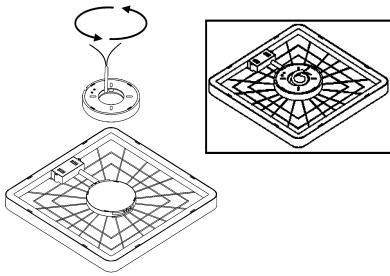
x 3



x 4

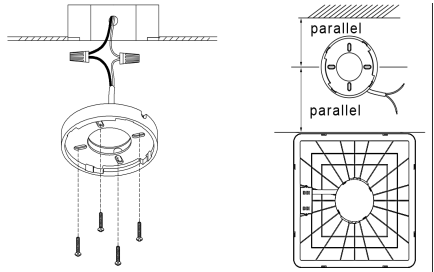
## Installation Steps

### step 1



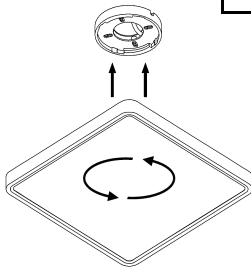
Remove the bracket from the light fixture.

### step 2



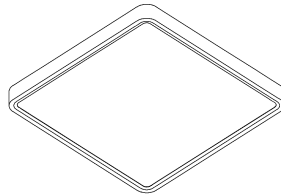
1.Install the bracket to the junction box with screw.  
2.Connect the wire to your home line.  
(live line(black wire) to live line, and neutral line(white wire) to neutral line, no need ground wire.)

### step 3



Rotate the light clockwise to install onto the bracket, please make sure they are fixed tightly.

### step 4



Installation finished.

If you have any problems or need help, please contact our customer service team !

# INSTRUCTION MANUAL

Thanks for chose our light. Please read carefully before installation!!!

Note: 1.Please make sure that the electricity is powered off during installation !

2.Only a professional electrician should install this kind of product !

## Package List



x 1



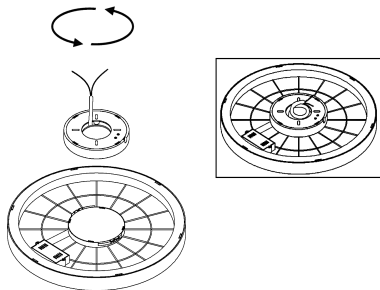
x 3



x 4

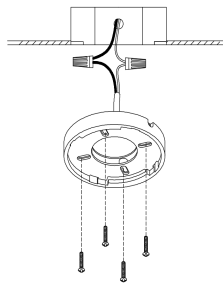
## Installation Steps

### step 1



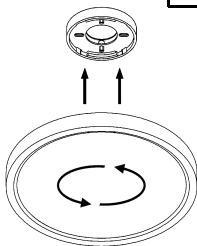
Remove the bracket from the light fixture.

### step 2



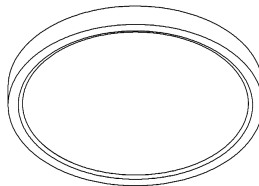
- 1.Install the bracket to the junction box with screw.
- 2.Connect the wire to your home line.  
(live line(black wire) to live line, and neutral line(white wire) to neutral line, no need ground wire.)

### step 3



Rotate the light clockwise to install onto the bracket, please make sure they are fixed tightly.

### step 4



Installation finished.

If you have any problems or need help, please contact our customer service team !