

ASSEMBLY INSTRUCTIONS



CAUTION

◆ Inspect the wire insulation for any cuts, abrasions, or exposed copper that may have residue during shipping. If there is a defect in the wire, do not attempt installation.

◆ Before starting installation of this fixture or removal of a previous fixture, disconnect the power by turning off the circuit breaker or by removing the fuse at the fuse box.

TOOLS REQUIRED



Ladder



Safety Goggles



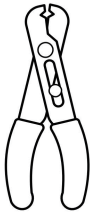
Electrical Tape



Phillips Screwdriver



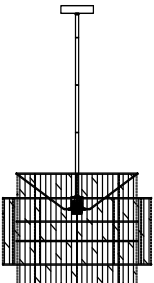
Flathead Screwdriver



Wire Cutter



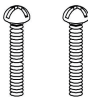
Wire Stripper



Fixture



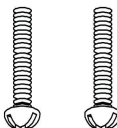
Mounting Unit



Mounting Screws 2



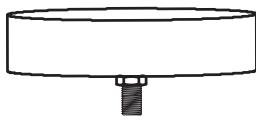
Wire Nuts 3



Screws 2



plastic button



Canopy



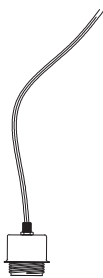
6" Tube 1



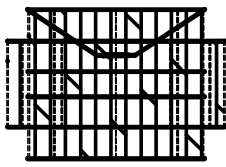
12" Tube 2



18" Tube 3



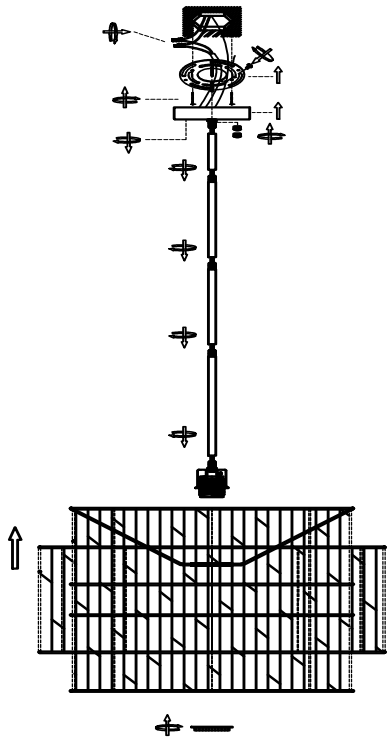
Socket



Rattan body

\* PARTS SHOWN MAY DIFFER SLIGHTLY PER LIGHT FIXTURE

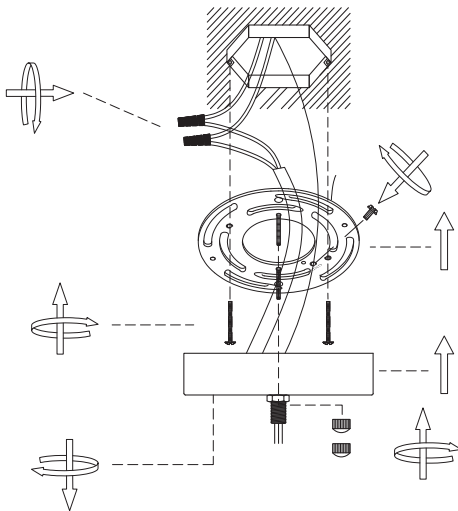
EXPLODED PARTS



INSTALLATION

STEP 1

Unscrew the ball nut from the mounting unit.  
Use the mounting screws to attach the mounting unit to the junction box.



STEP 2

Make the electrical connection from the junction box to the fixture.  
Connect the ground wire to the mounting unit using the preinstalled green ground screw.  
Then, connect the positive, negative, and ground wires with the supplied wire nuts.  
Secure with electrical tape.

