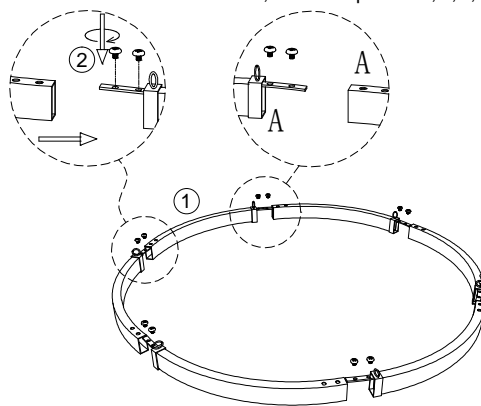
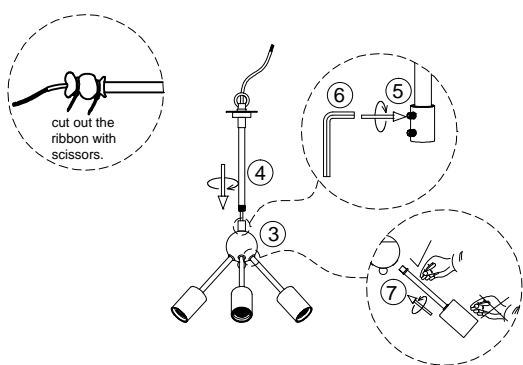


please mind that profile female A should install to male A, profile B should install to male B, same as profile C,D,E,F,G...

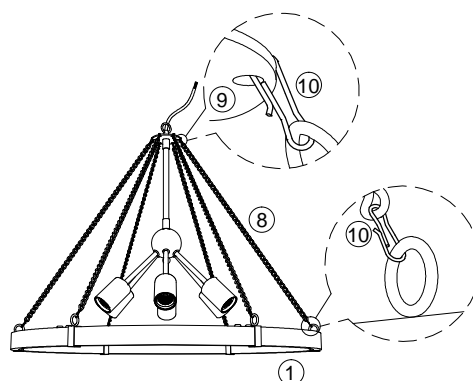


1. Assemble the split profiles ① to a completely ring, fasten the profiles with screw ②.

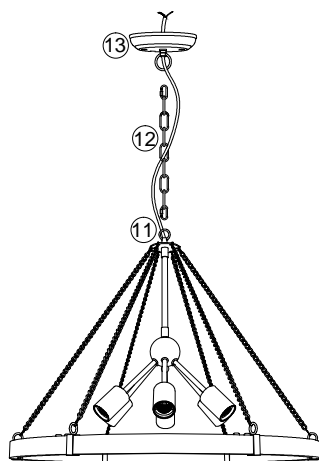


2. Rotate the light arms ⑦ counterclockwise 8-10 times, and install to the ball ③.

3. Let the main wire go through the tube ④, rotate to fix the tube ④ on the nut of ball ③, lock it with grub screw ⑤ (use hex key ⑥).

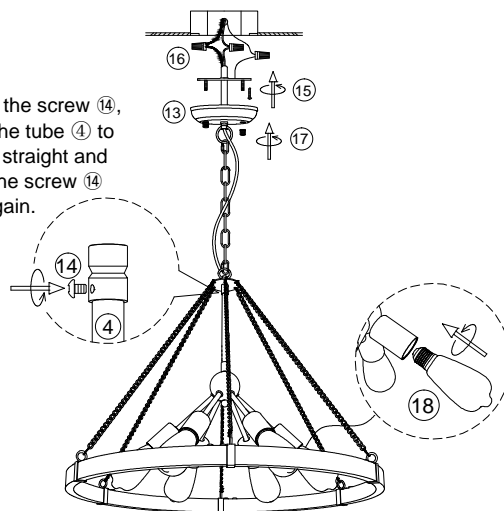


4. Hang the ring frame ① to the round plate of light fixture with hook ⑩ of small chain ⑧.



5. Hang the light fixture to the canopy ⑬ with big chain ⑫, let the wire go through chain ⑫ and canopy ⑬.

Loosen the screw ⑭, adjust the tube ④ to make it straight and rotate the screw ⑭ to fix again.



6. Install the bracket to the ceiling junction box with screw ⑮.

7. Connect the wire to your home line.

8. Install the fixture to the bracket with cap nut ⑰.

9. Install the bulb ⑱.

ZJD00039-4/6/8

Please read carefully before installation!!!

Note : Please make sure that the electricity is powered off during installation !

Only a professional electrician should install this kind of product !