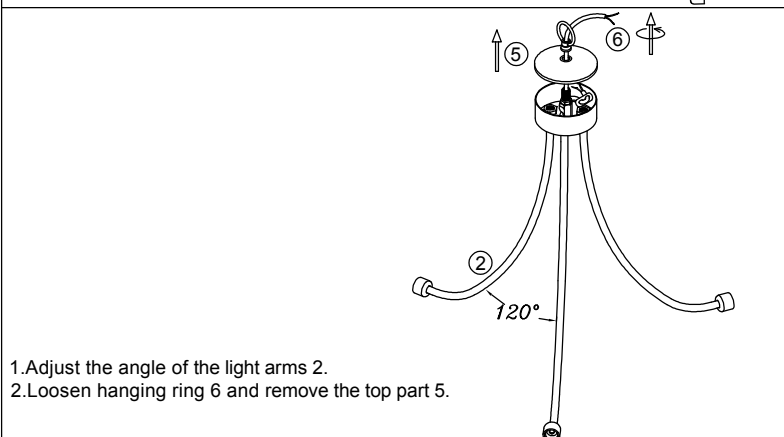
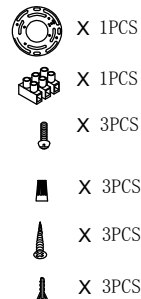


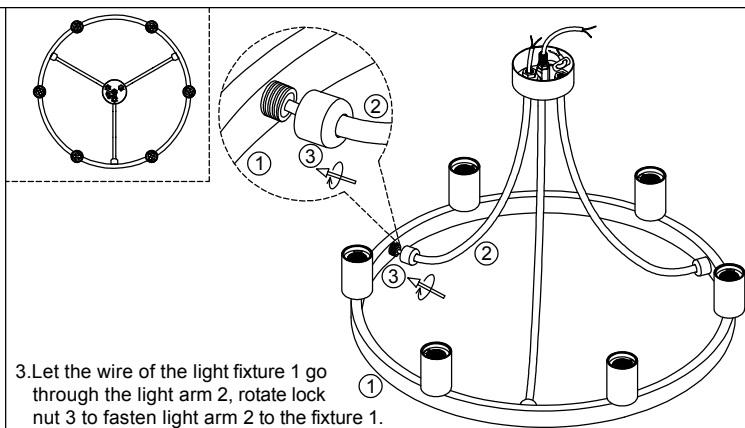
⑨ canopy 1pcs
⑩ cap nut 2pcs

⑧ chain 1pcs

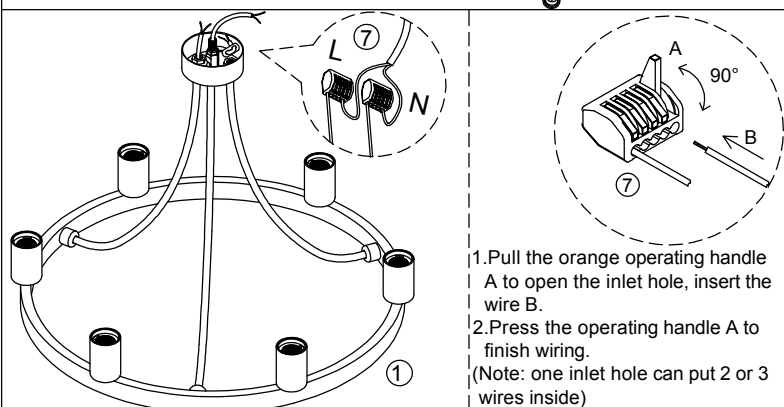
⑦ splicing connector 2pcs



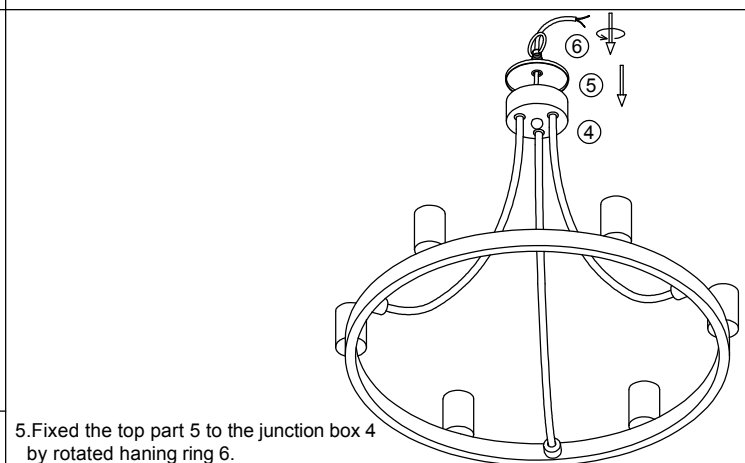
1. Adjust the angle of the light arms 2.
2. Loosen hanging ring 6 and remove the top part 5.



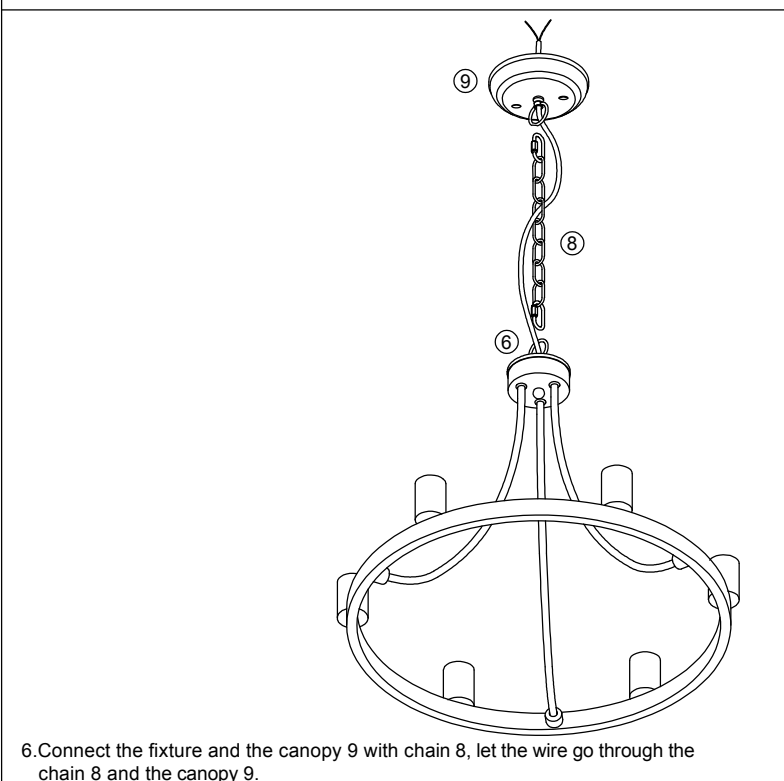
3. Let the wire of the light fixture 1 go through the light arm 2, rotate lock nut 3 to fasten light arm 2 to the fixture 1.



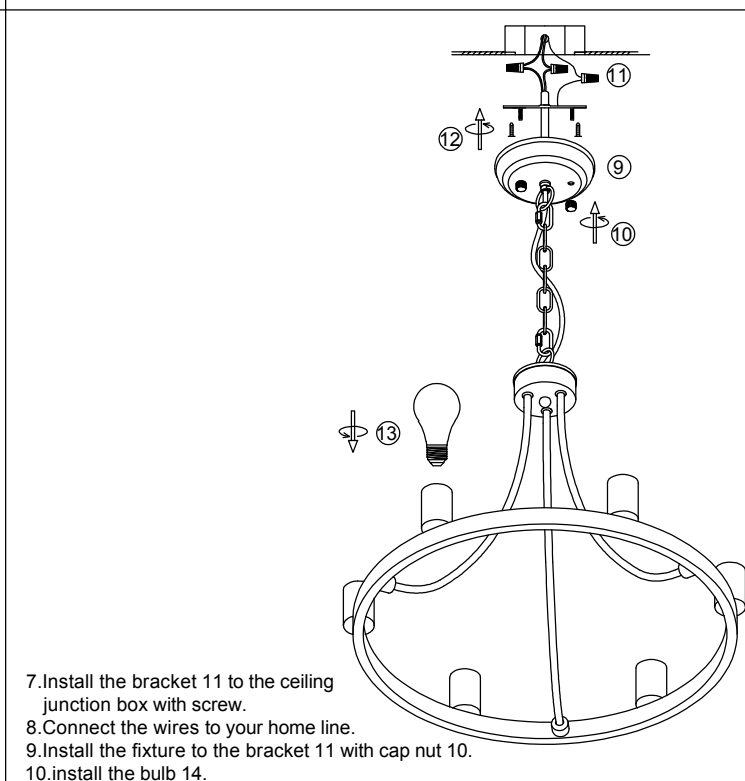
4. Connect the wires by parallel with splicing connector 7.
(live line-L use one connector, neutral Line-N use another connector).



5. Fixed the top part 5 to the junction box 4 by rotated hanging ring 6.



6. Connect the fixture and the canopy 9 with chain 8, let the wire go through the chain 8 and the canopy 9.



7. Install the bracket 11 to the ceiling junction box with screw.
8. Connect the wires to your home line.
9. Install the fixture to the bracket 11 with cap nut 10.
10. install the bulb 14.

D0031-6

Please read carefully before installation!!!

Note : Please make sure that the electricity is powered off during installation !

Only a professional electrician should install this kind of product !