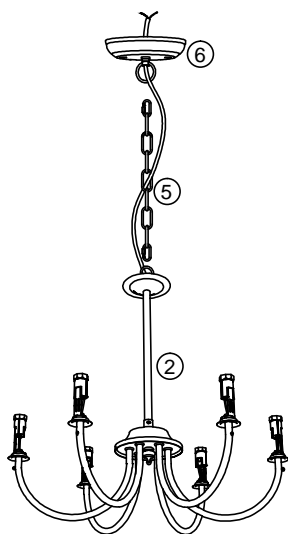
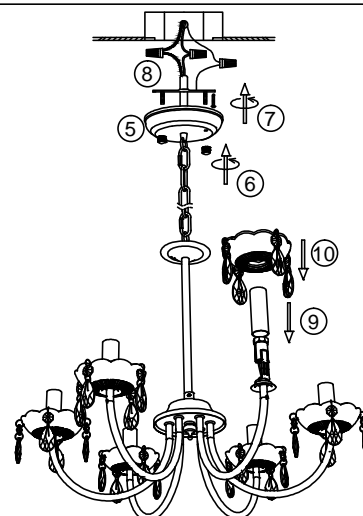


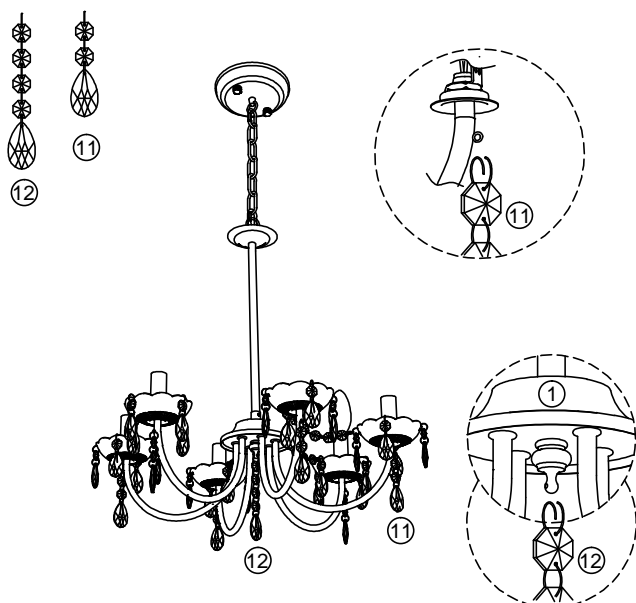
1. Open the light arms like picture showed.
2. Let the wire of the fixture ① go through the hanging tube ②, rotate to fix tube ② to the light fixture ①.
3. Let the hole of the plate which on the hanging tube ② face to the bulbholder, after that use hex key ④ to rotate the grub screw ③ to fix the tube ② on the light fixture ①.



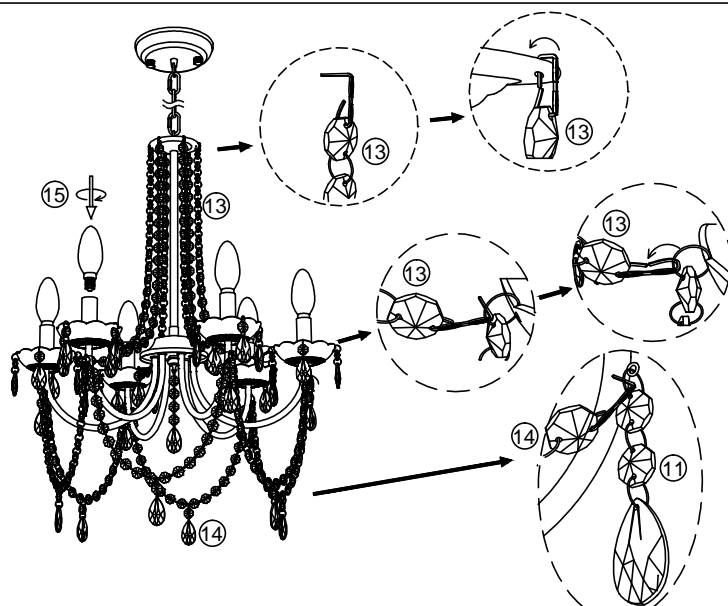
4. Hang the fixture to the canopy ⑥ with chain ⑤, let the wire go through chain ⑤ and canopy ⑥.



5. Install the bracket to the ceiling junction box with screw ⑦.
6. Connect the wire to your home line with cap connector ⑧.
7. Install the light fixture to the bracket with cap nuts ⑥.
8. Put the glass dish ⑩ and cylinder tube ⑨ on the bulbholder.



9. Hang the crystal ⑪ to the small hole of light arm..
10. Hang the crystal chain ⑫ to the light fixture ①.



11. Hang the crystal chain ⑬ between the light fixture ① and the glass dish ⑩.
12. Hang the crystal chain ⑭ to the metal ring of crystal chain ⑪.
13. Install the bulb ⑭.

#### D6017-6

Please read carefully before installation!!!

Note : Please make sure that the electricity is powered off during installation !

Only a professional electrician should install this kind of product !