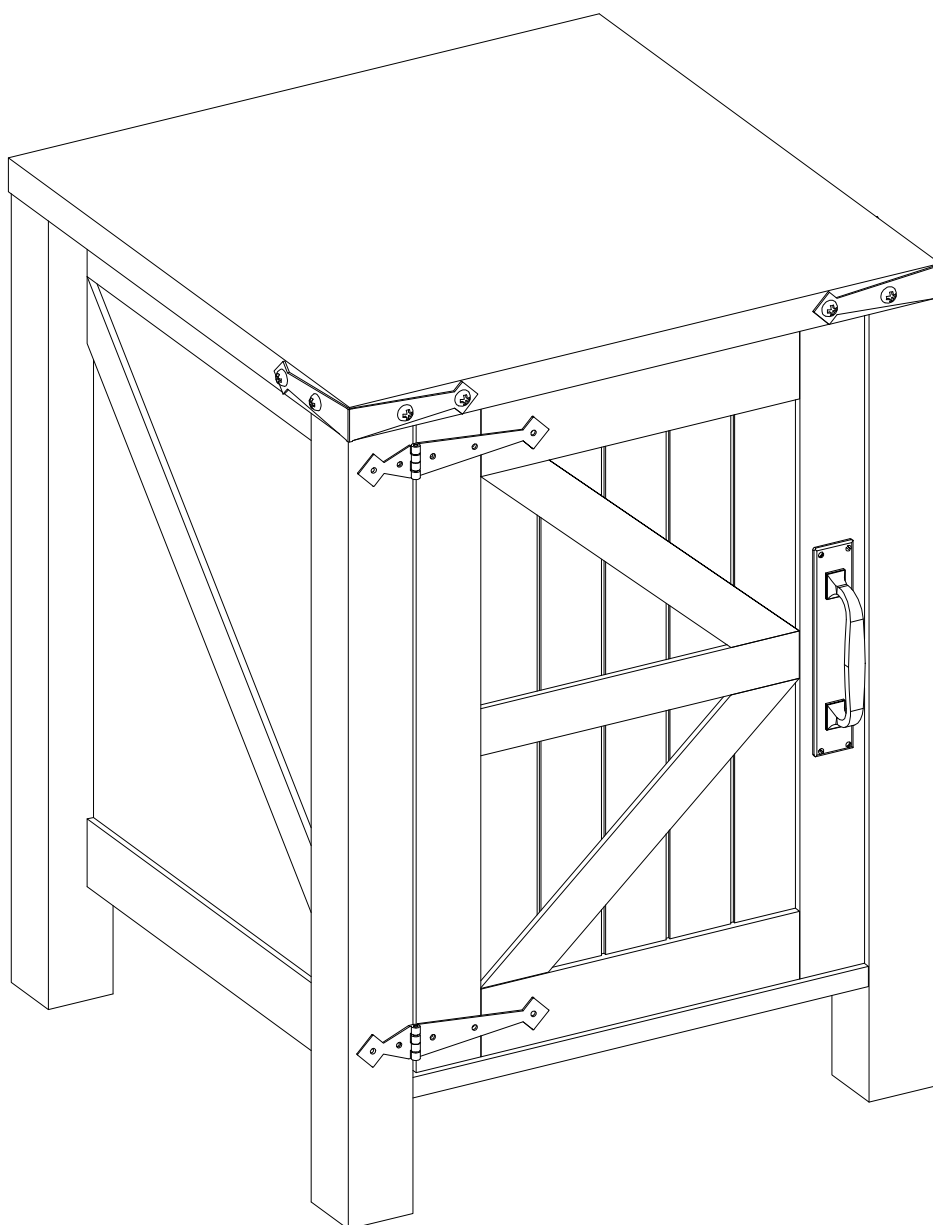


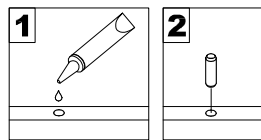
AI-BDC18ST

Assembly Instructions

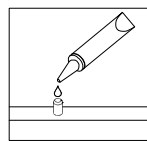


General Assembly Guidelines

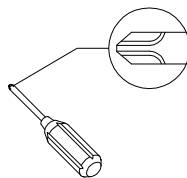
- I. Ensure that all parts and hardware are available before beginning assembly.
- II. Follow each step carefully to ensure the proper assembly of this product.
- III. Two people are recommended for ease in the assembly of this product.
- IV. The three main types of hardware used to assemble this product are : wood dowels , screws and bolts.
- V. The provided glue is to secure wood dowels in place . When first inserting dowels , locate the appropriate hole for the dowel , place a small amount of glue in the hole and insert the dowel . Wipe away excess glue immediately.



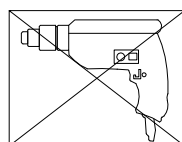
In future assembly steps when dowels are necessary to attach assembly parts together , place a small amount of glue on the end of the dowel before attaching parts together . Wipe away excess glue immediately.



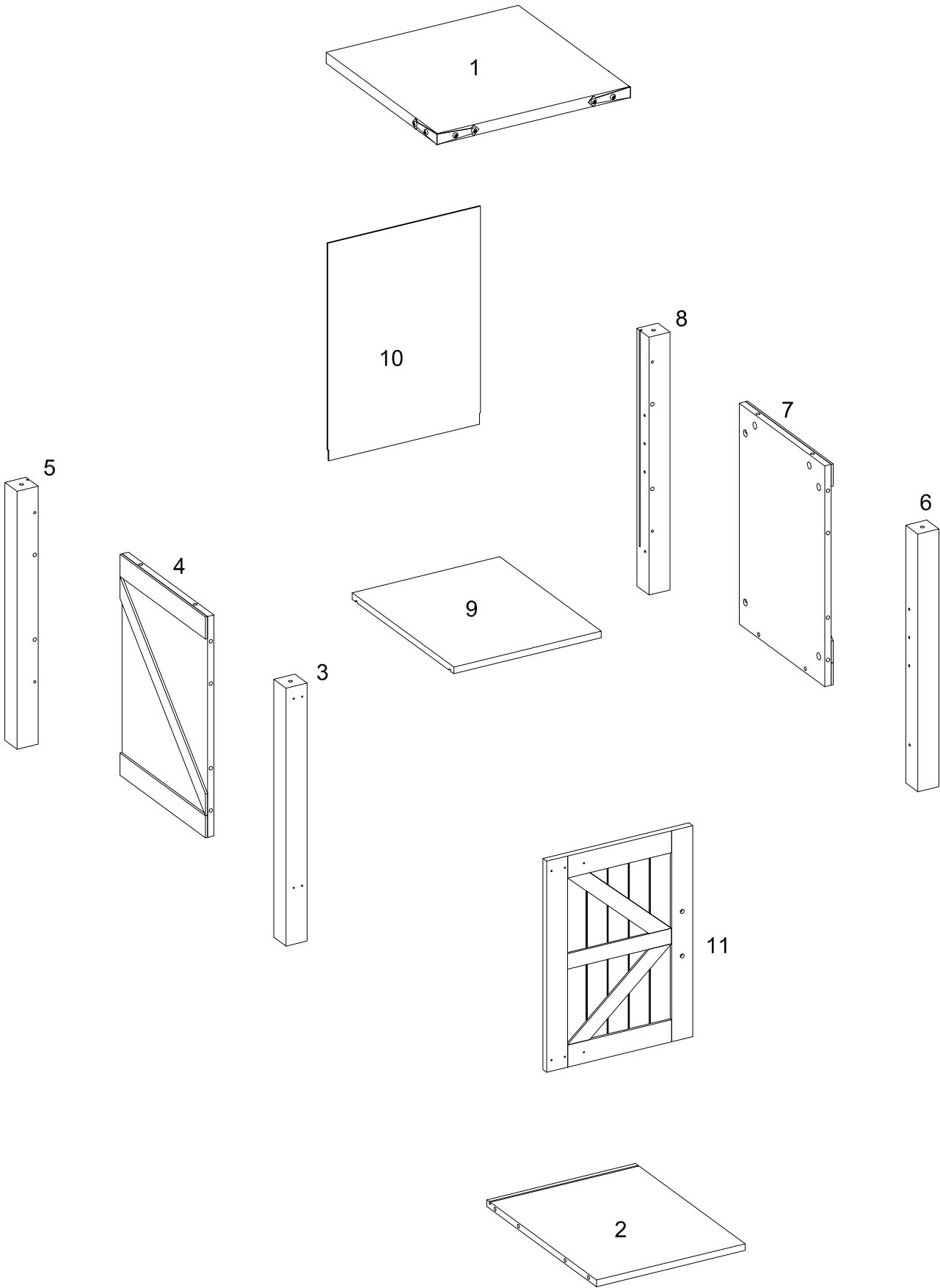
- VI. A Phillips head screwdriver is required for the assembly of this product .




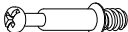



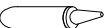
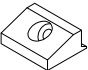
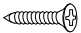

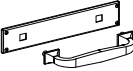
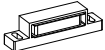
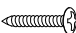

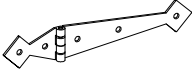
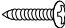
- VII. Power tools should not be used to assemble this product .

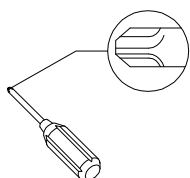


Parts List



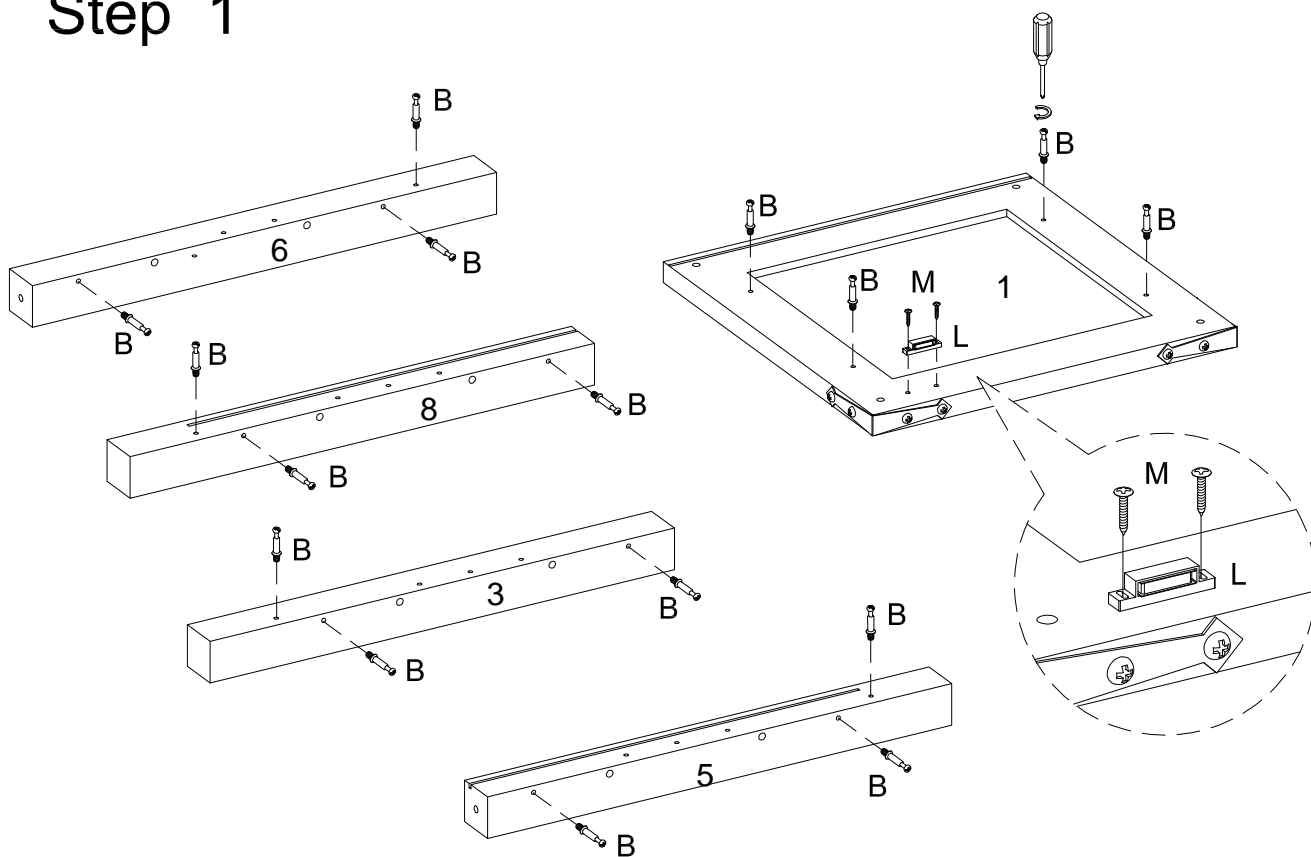
Hardware List

A		Ø8x30mm	Wood dowel	16 pcs
B		Ø6x35mm	Cam bolt	16 pcs
C		Ø15x11mm	Cam lock	16 pcs
D		Ø30mm	Sticker	16 pcs
E		Ø8x5x16mm	Shelf support pin	4 pcs
F			Glue	1 pcs
G			Plastic wedge	4 pcs
H		Ø3x17mm	Flat-head screw	4 pcs
J		Ø4x12mm	Handle bolt	2 pcs
K			Handle	1 pcs
L			Magnetic catch	1 pcs
M		Ø3x15mm	Screw	2 pcs
N			Metal plate	1 pcs
O			Hinge	2 pcs
P		Ø3x12mm	Screw	11 pcs

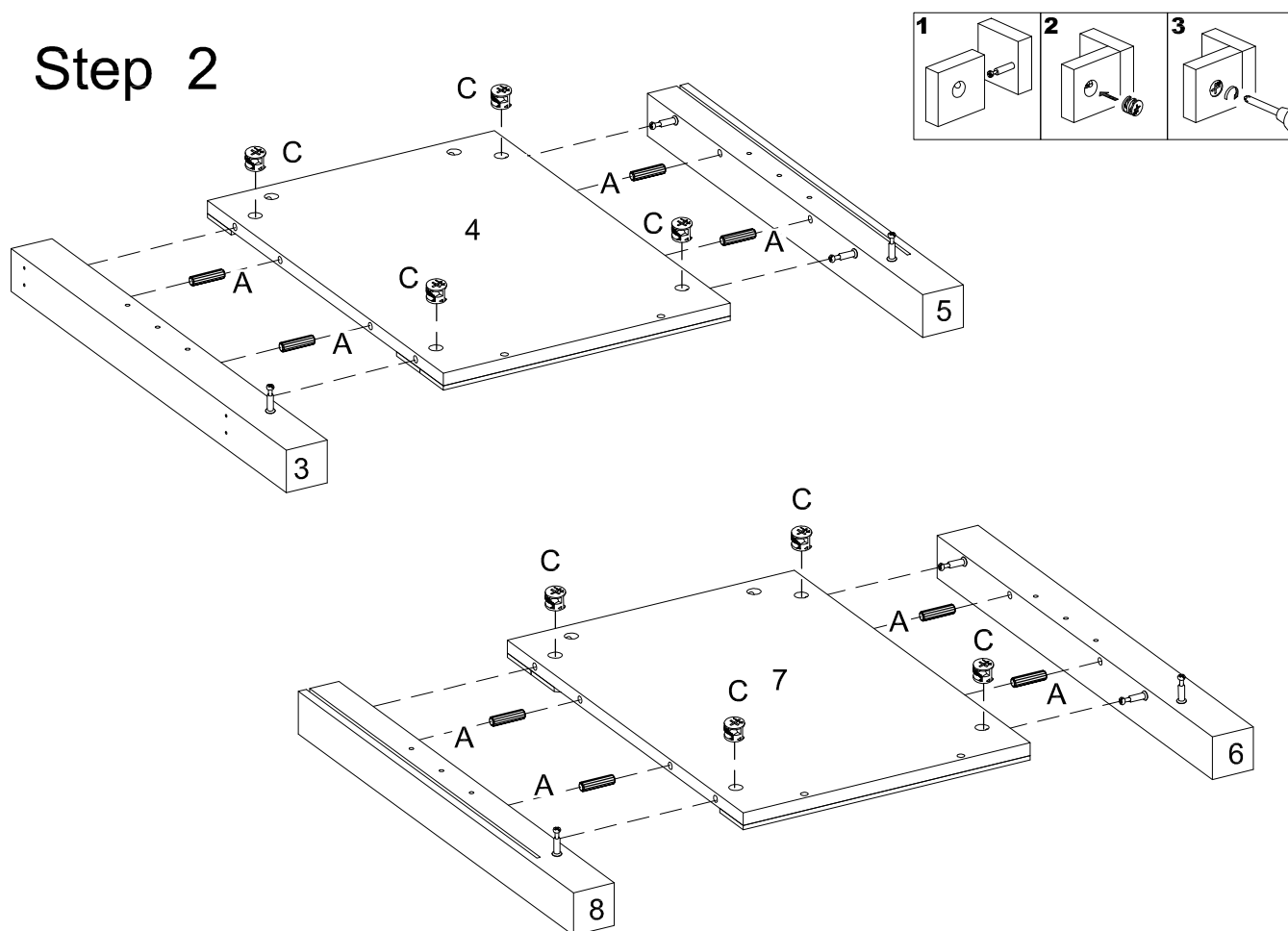


Philips head screwdriver required for assembly
(not included)

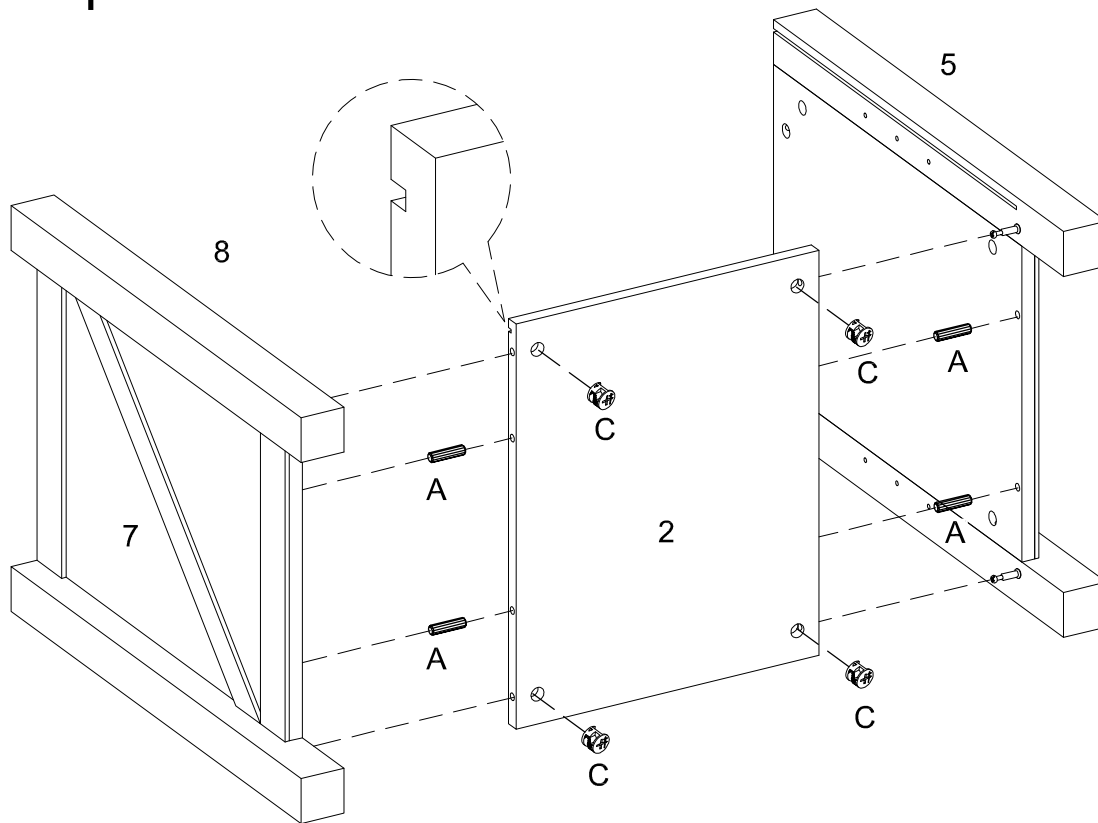
Step 1



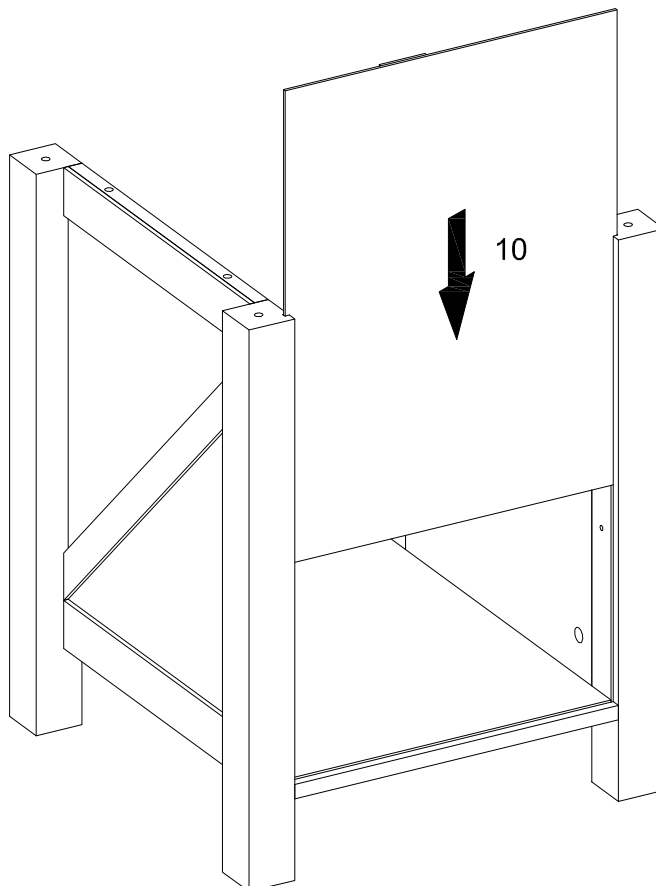
Step 2



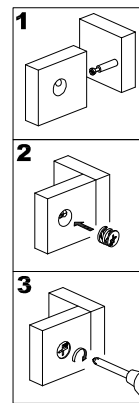
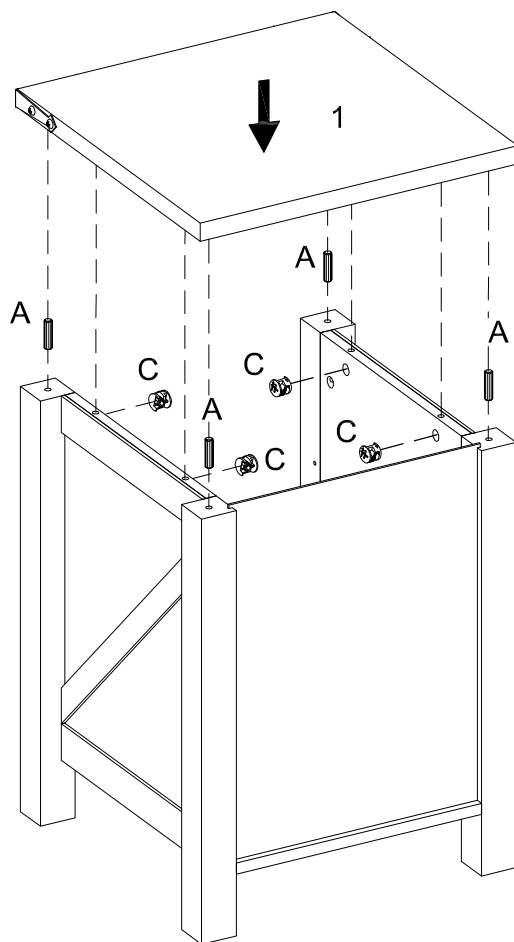
Step 3



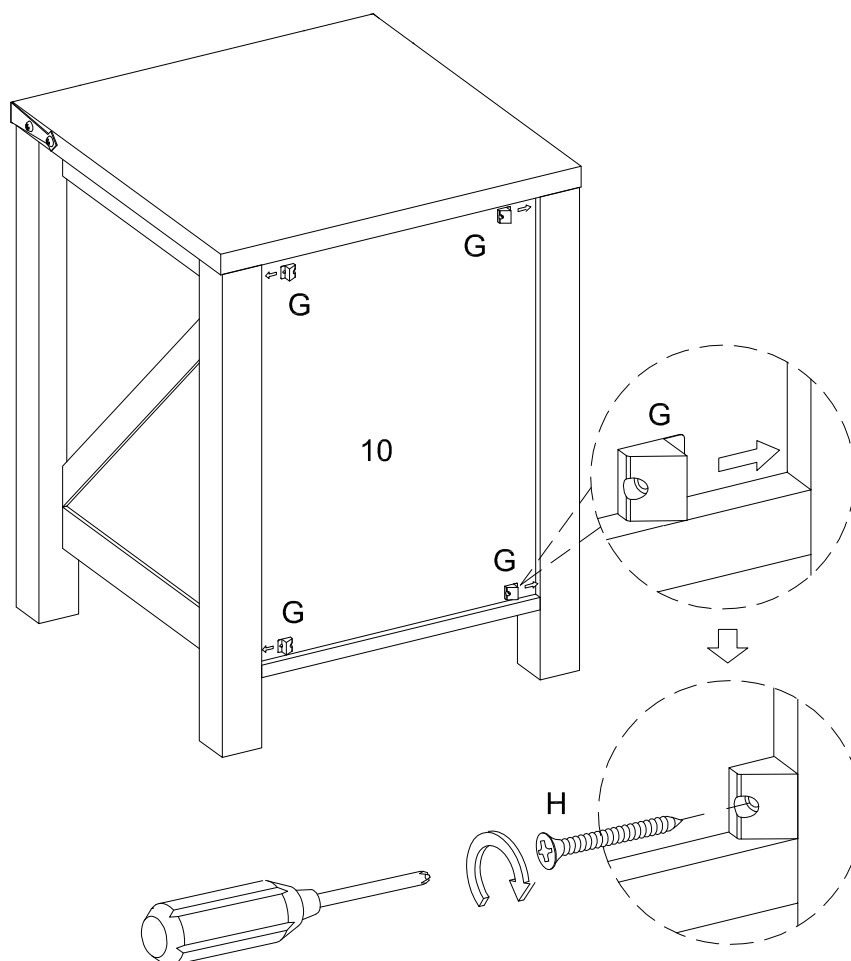
Step 4



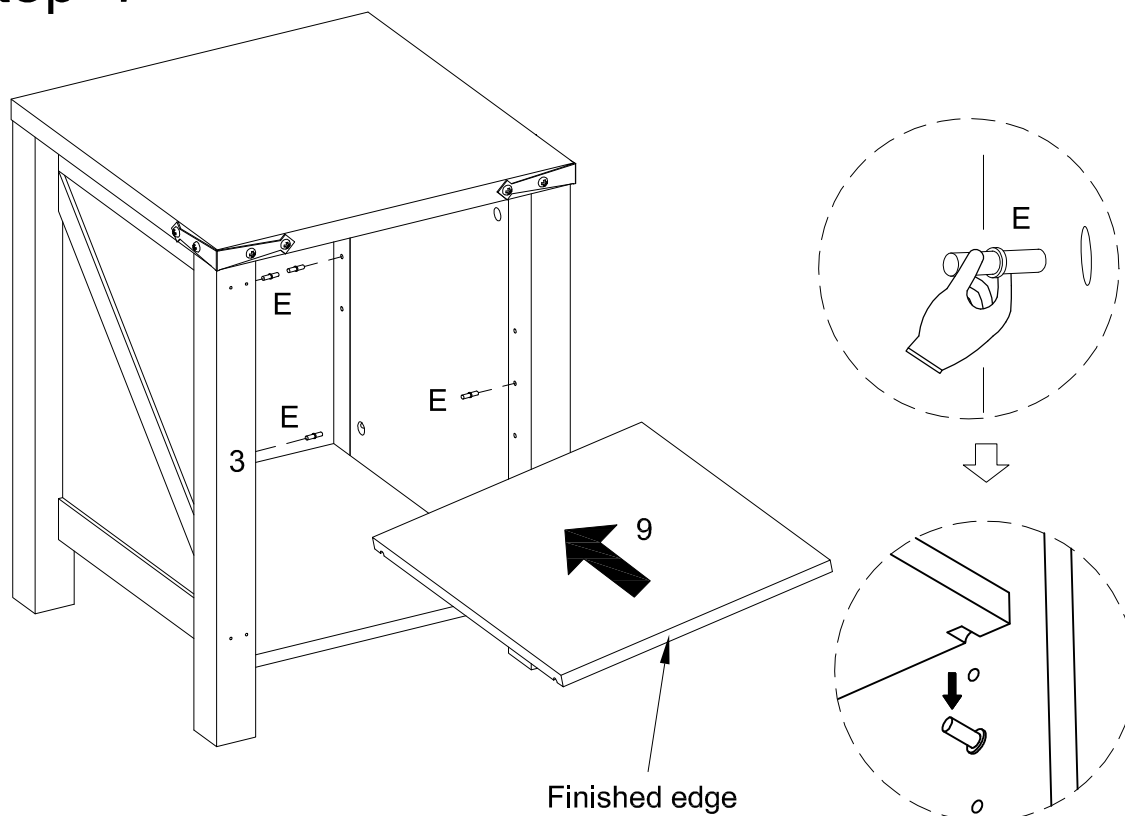
Step 5



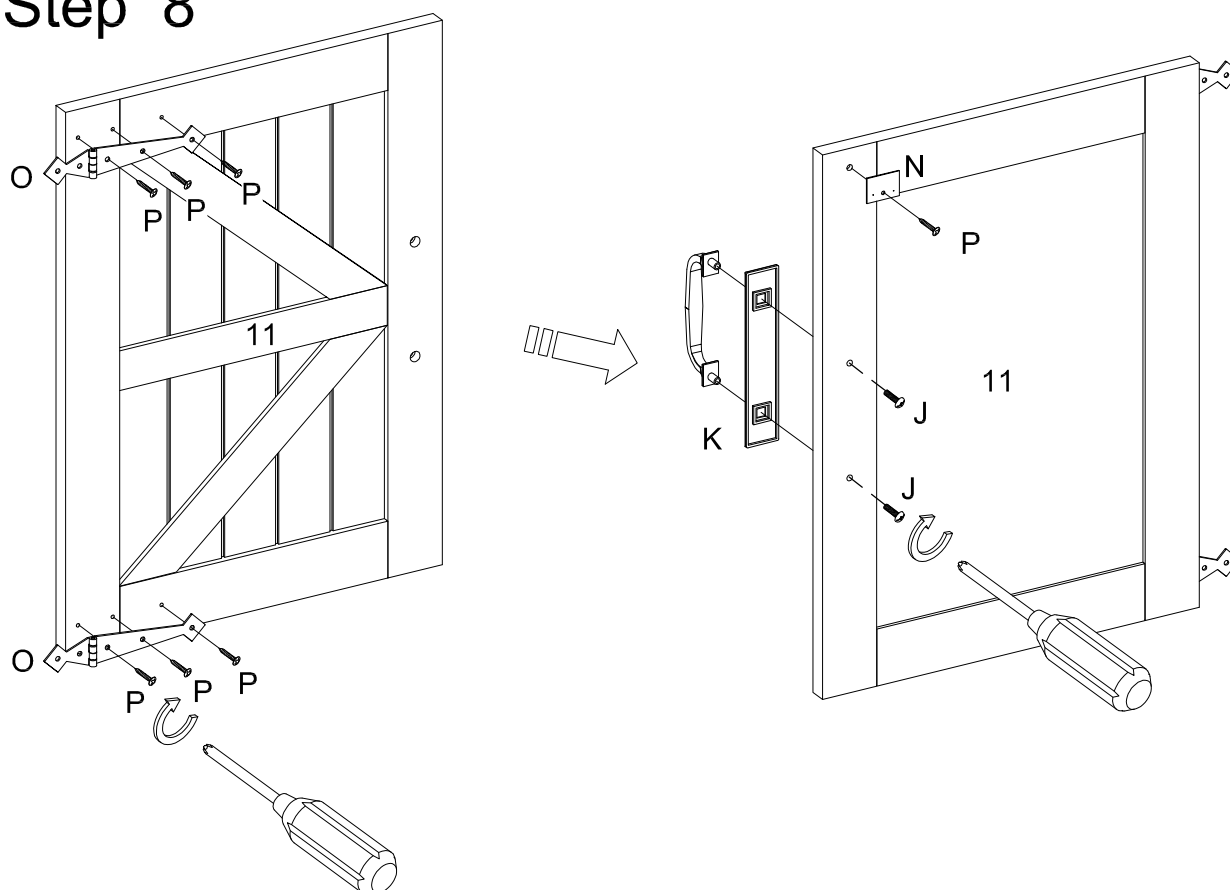
Step 6



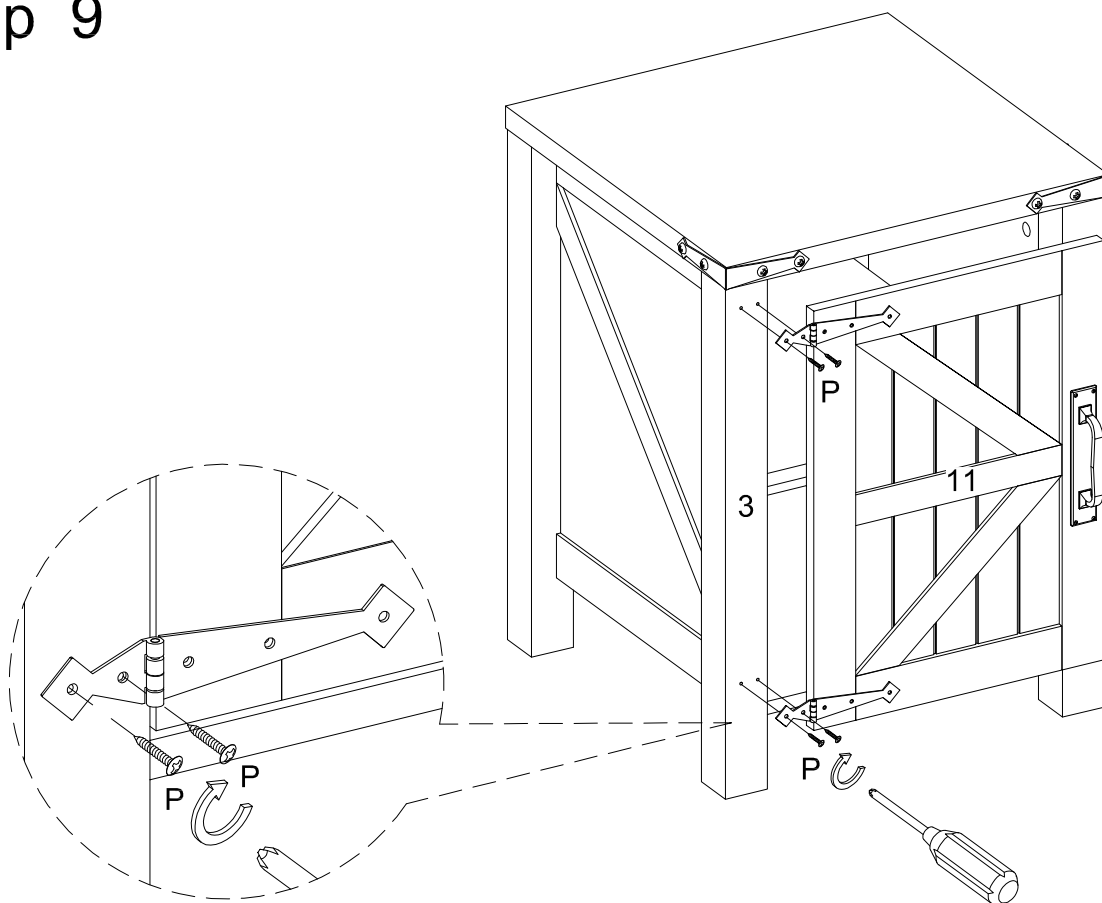
Step 7



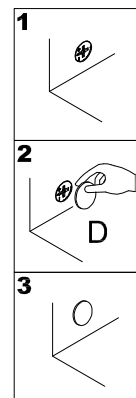
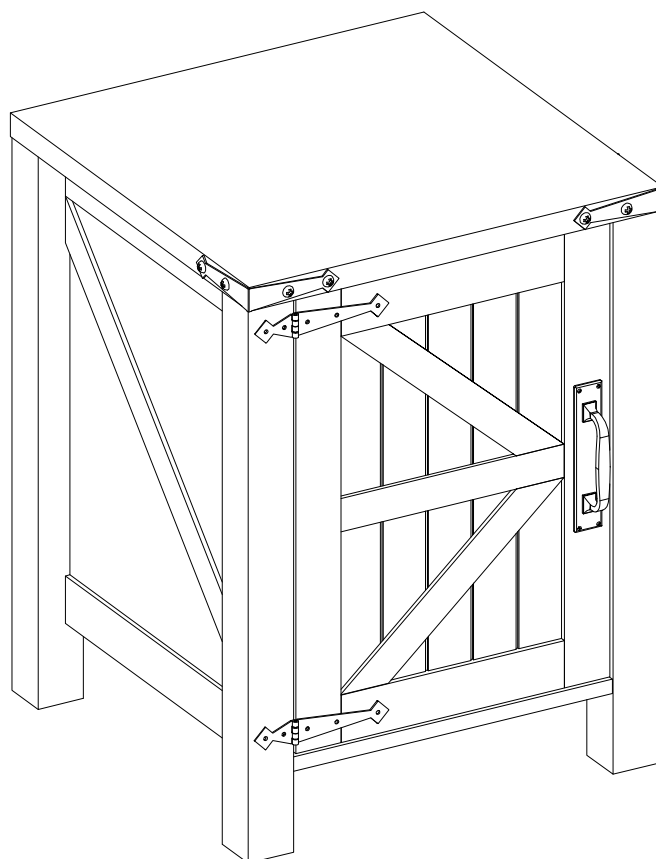
Step 8



Step 9



Step 10



Final Assembly