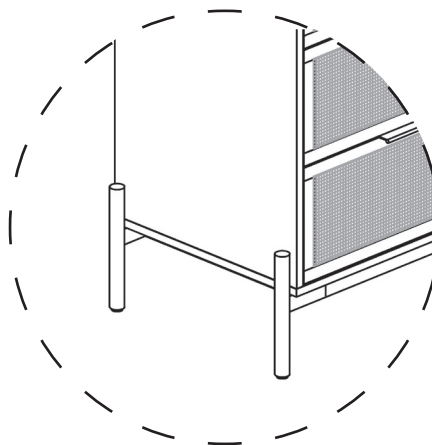
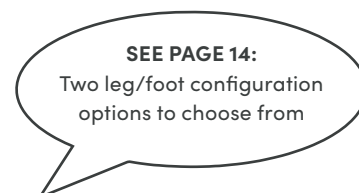
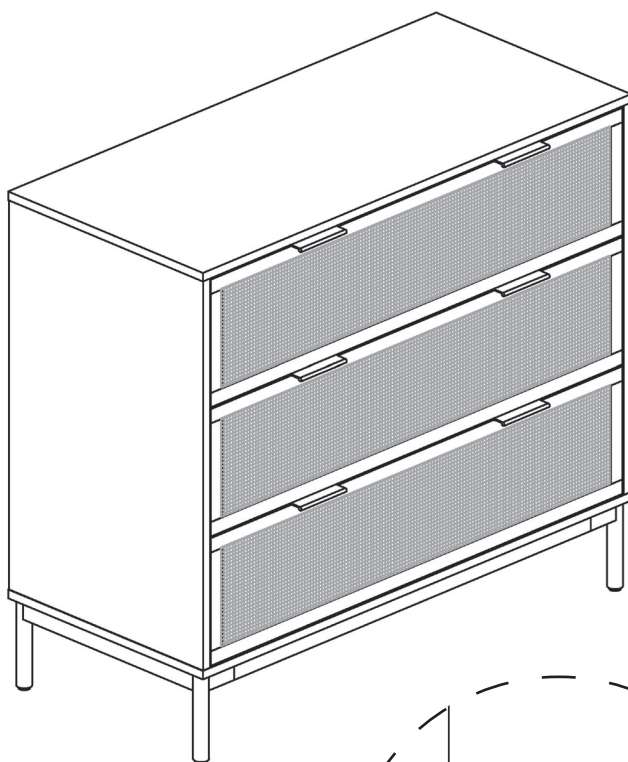


Let's build the

Andrew Dresser

SKU 71901



Scan me!

Free Lifetime
Warranty

nathan james

24-1114

Ok, let's get rolling

This should be easy, just follow our instructions and you will be back to Netflix in no time.

Estimated time for assembly



140:00

What you need

- Some bubbly or your preferred relaxant
- Use the packaging carton as a working surface to prevent product damage during assembly
- Phillips head screwdriver

Do not use a drill



Weight Limitation



154
lbs

Top Max Capacity: 55 lbs.

Drawer Max Capacity: 33 lbs. / drawer

Toll-free at 1-866-619-1004
Help@nathanjames.com
Nathanjames.com/help

What's included

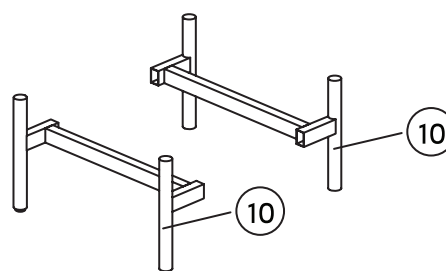
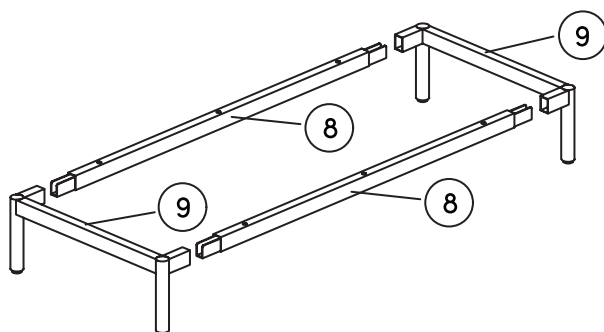
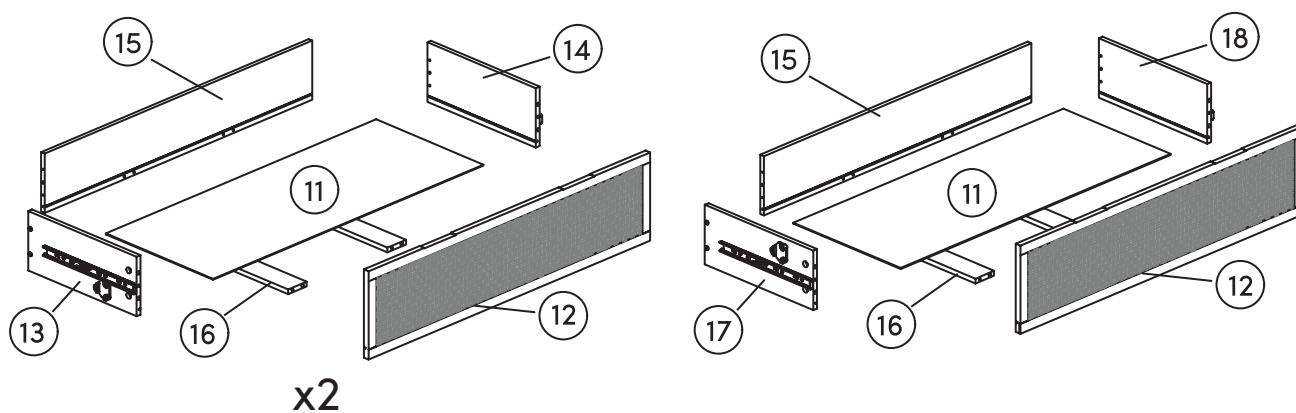
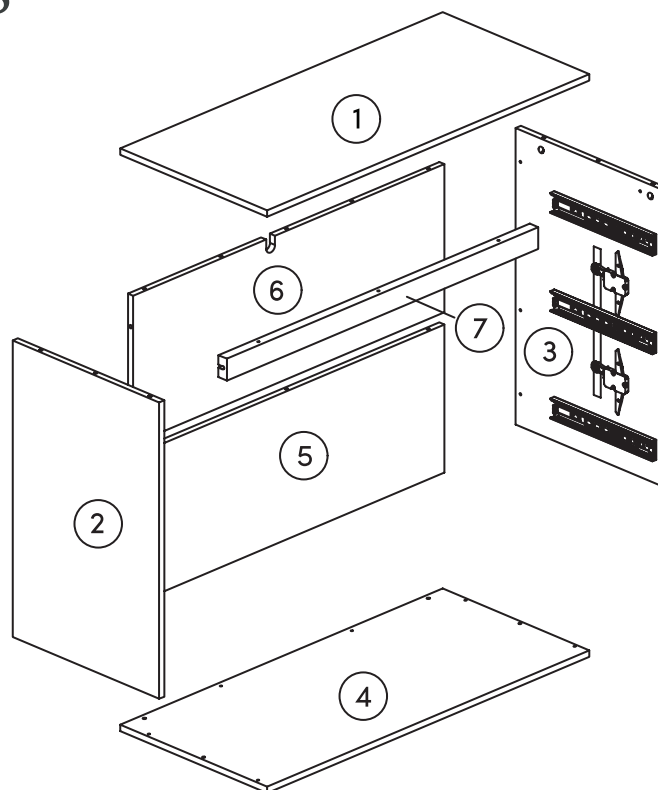
Description		Qty
1	Top Panel	1
2	Left Side Panel	1
3	Right Side Panel	1
4	Bottom Panel	1
5	Lower Back Panel	1
6	Upper back panel	1
7	Top Wood Stretcher	1
8	Top Metal Stretcher	2
9	Short Leg Frame	2
10	Long Leg Frame	2
11	Drawer Bottom (All Drawers)	3
12	Drawer Front (All Drawers)	3
13	Drawer Side - Left (Top & Middle Drawers)	2
14	Drawer Side - Right (Top & Middle Drawers)	2
15	Drawer Back (All Drawers)	3
16	Drawer Side Bottom Support (All Drawers)	6
17	Drawer side left (bottom drawers)	1
18	Drawer Side - Right (Bottom Drawer)	1

Scan me!

Free Lifetime
Warranty



The goods



IMPORTANT NOTE:

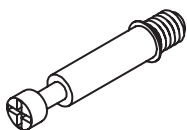
You will have extra leg components depending on the leg configuration(s) you choose during Step 8

What's included

Description		Qty
A	M6*35mm Cam Bolt	35
B	15 x 9.5 mm Cam Lock	35
C	M6*30 mm Wooden Dowel	35
D	M4*50 mm Screw	10
E	M4*38 mm Screw	18
F	1/4"*12 mm Bolt	8
G	1/4 " *40 mm Bolt	6
H	Allen Key	1
I	Handle	6
J	Ø3*12mm Screw	12
K	Ø4*35mm Screw	1
L	Ø4*14mm Screw	1
M	Adjustable Bracket	1
N	Plastic Anchor	1

The goods

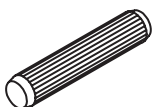
A



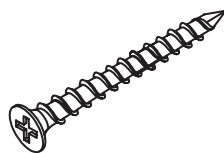
B



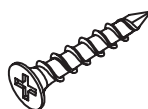
C



D



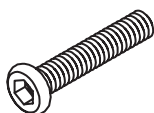
E



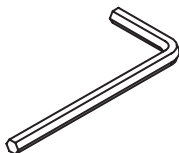
F



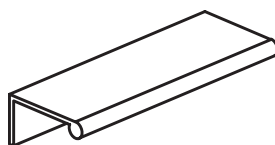
G



H



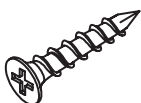
I



J



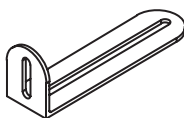
K



L



M



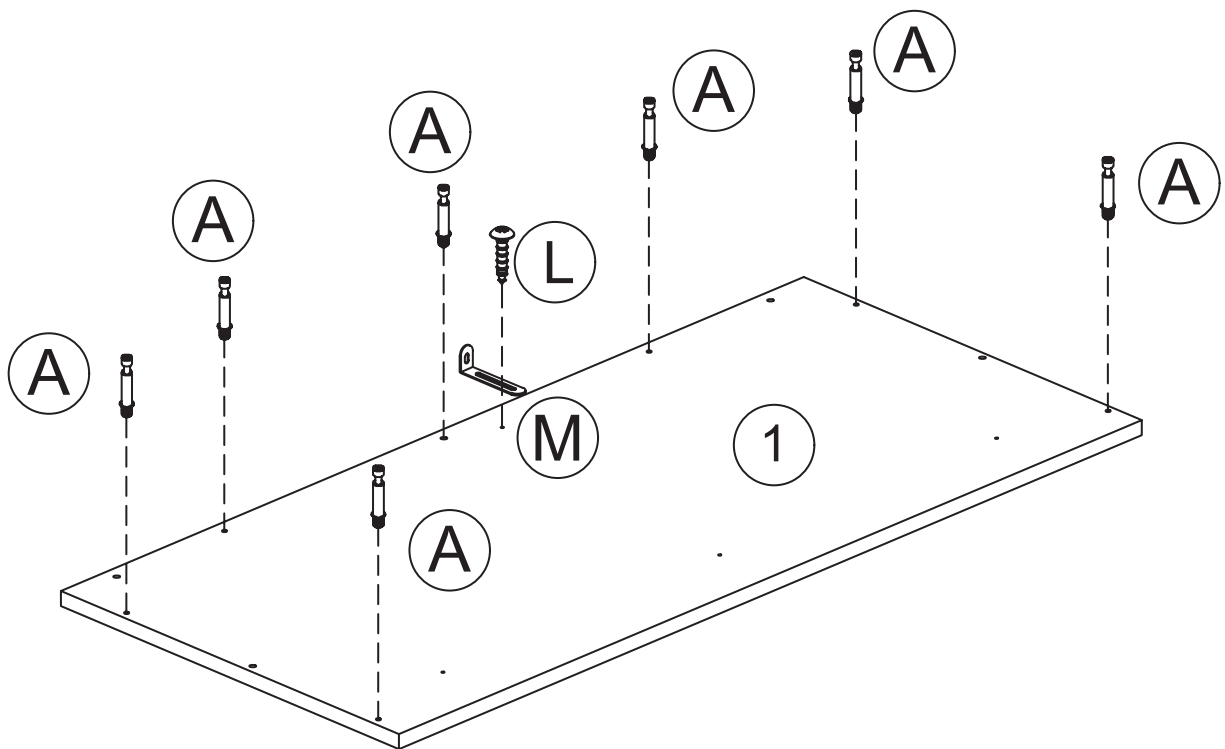
N



Step 1

A  X 7pcs M  X 1pc L  X 1pc

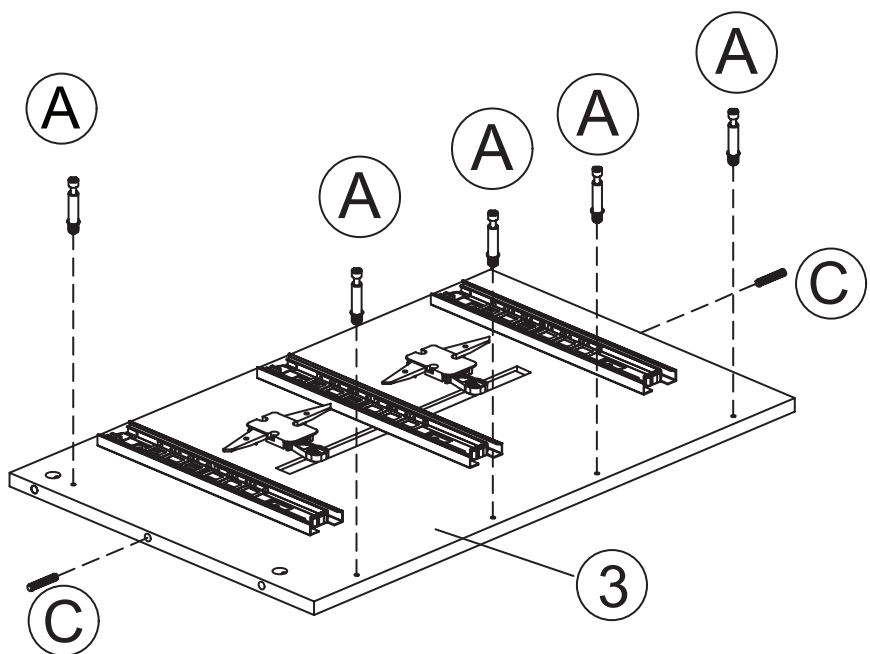
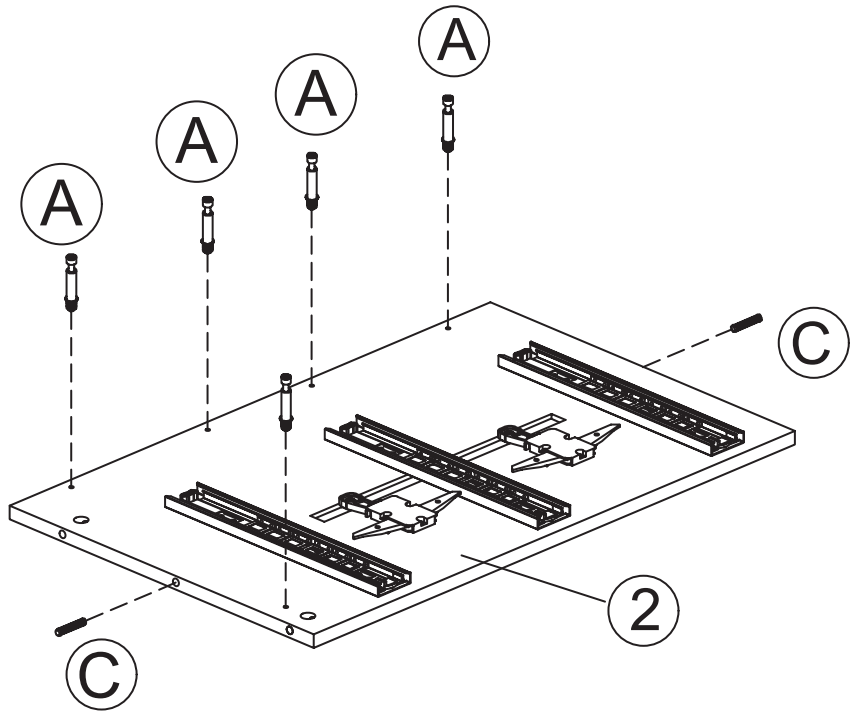
Let's begin building your new dresser! Grab the Top Panel (1) and lay it flat on a towel or soft surface. Following the image below, insert the M6*35mm Cam Bolts (A) into the corresponding holes. Then secure the Adjustable Bracket (M) in place using Ø4*14mm Screw (L).



Step 2

A  X 10pcs C  X 4pcs

Next we're going to grab the Left Side Panel (2) and the Right Side Panel (3) and insert the M6*35mm Cam Bolts (A) and the M6*30 mm Wooden Dowels (C) into the corresponding holes on each piece.

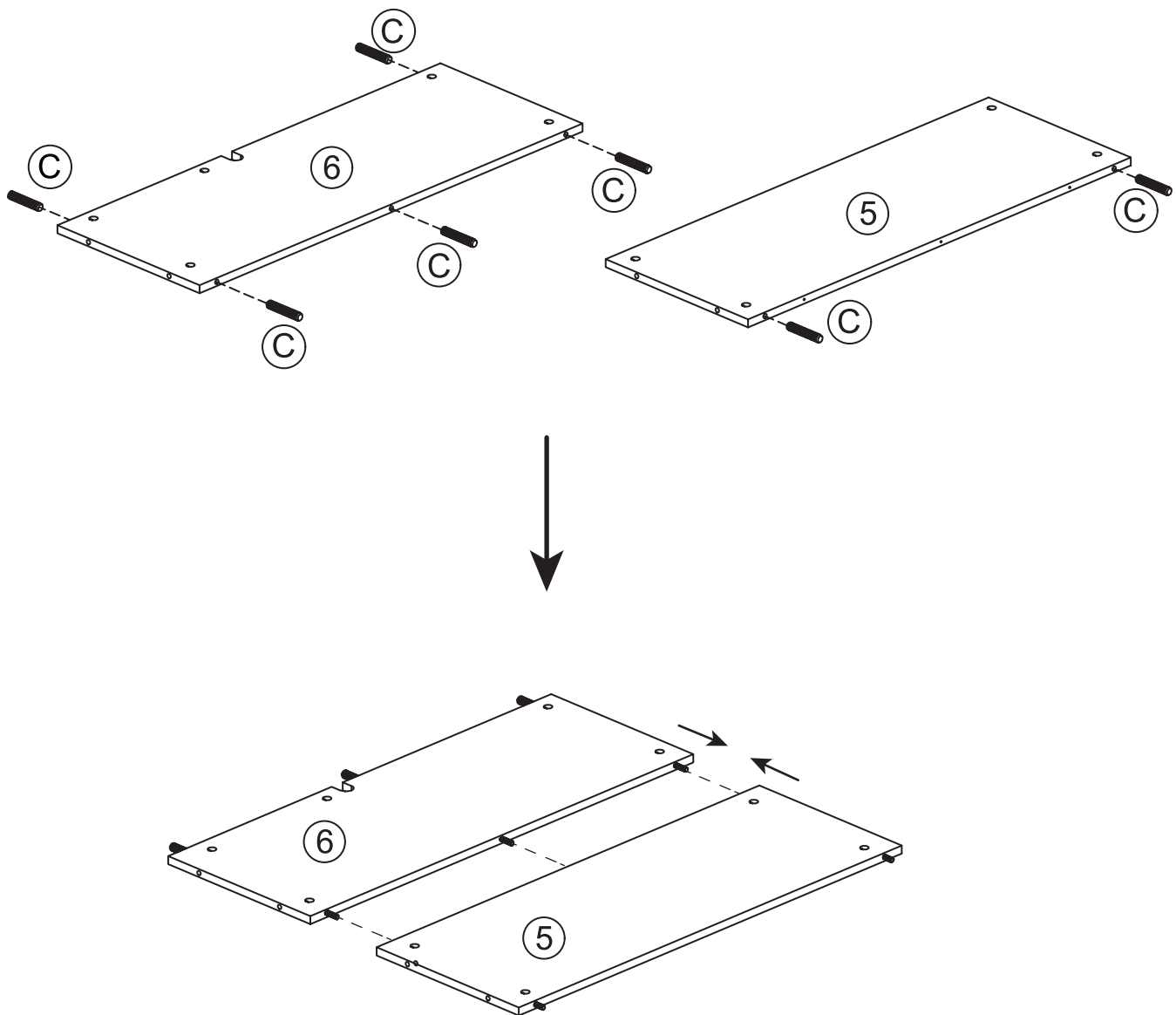


Step 3

C  X 7pcs

We're making big moves! Grab the Lower Back Panel (5) and the User Back Panel (6) and insert the M6*30 mm Wooden Dowels (C) into the holes following the image below.

Next, you will connect the Lower Back Panel (5) and Upper Back Panel (6) by pushing them together.



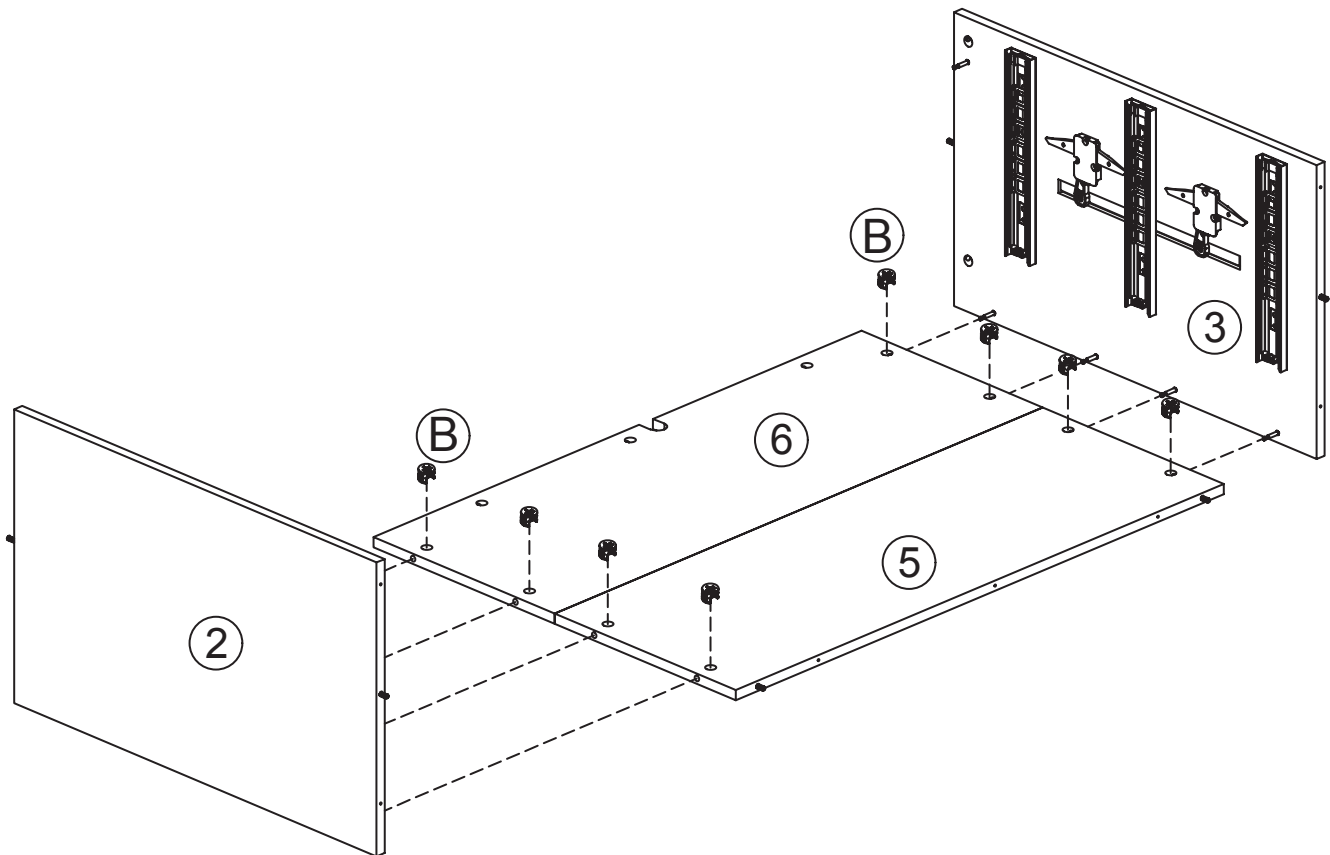
Step 4

B



X 8pcs

Keep the Lower Back Panel (5) and Upper Back Panel (6) laying flat on the ground. Grab the Left Side Panel (2) and the Right Side Panel (3) and attach them using the 15 x 9.5 mm Cam Lock (B).



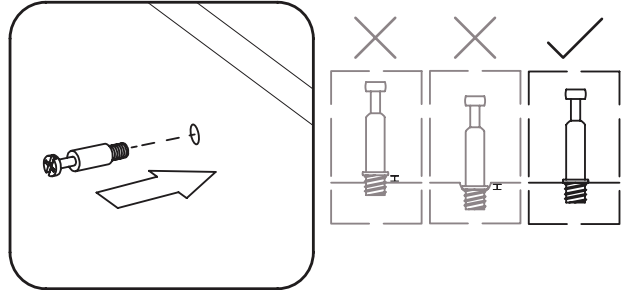
How to use cam locks

Did you know?

Cam locks are used to join two panels together, usually the edge of one to the flat side of another.

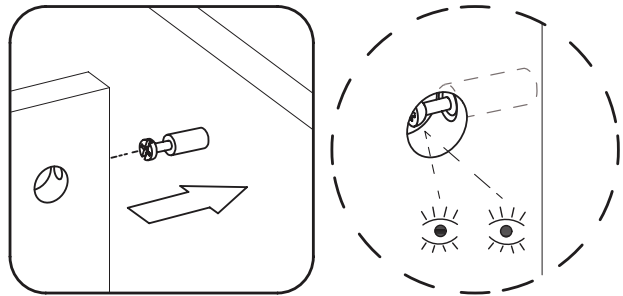
First, your cam bolt (or cam pin) will need to be properly inserted into the flat side of the board.

Important Note: Only tighten the cam bolt until it is secure. Do not over-tighten.



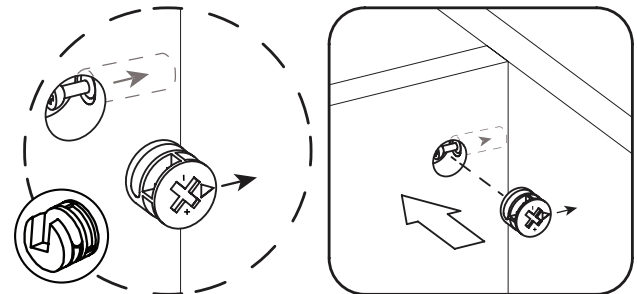
Next, you will fit the proper hole on the edge of the associated joining panel over the cam bolt.

Important Note: When installed properly, the head of the cam bolt will be visible through the larger hole on the side of the joining panel.



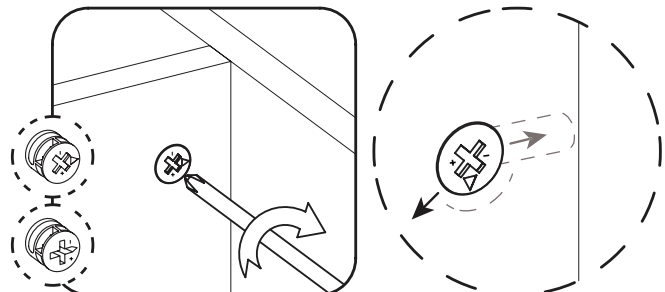
Next, you will notice the cam lock has a “C” shaped back. Commonly, an arrow on the front of the cam lock points in the same direction as the open section on back.

Using these as your cue, insert the cam lock into the large hole so the opening of the “C” fits over the head of the cam bolt.



Using a screwdriver, you will turn the cam lock until it stops, usually between 130° or 180°. You will feel the panels pulling closer until they are secured.

Important Note: Only turn the cam lock until the panels are fully engaged & feel secure. Turning too far may lead to hardware failure.



Still having issues?

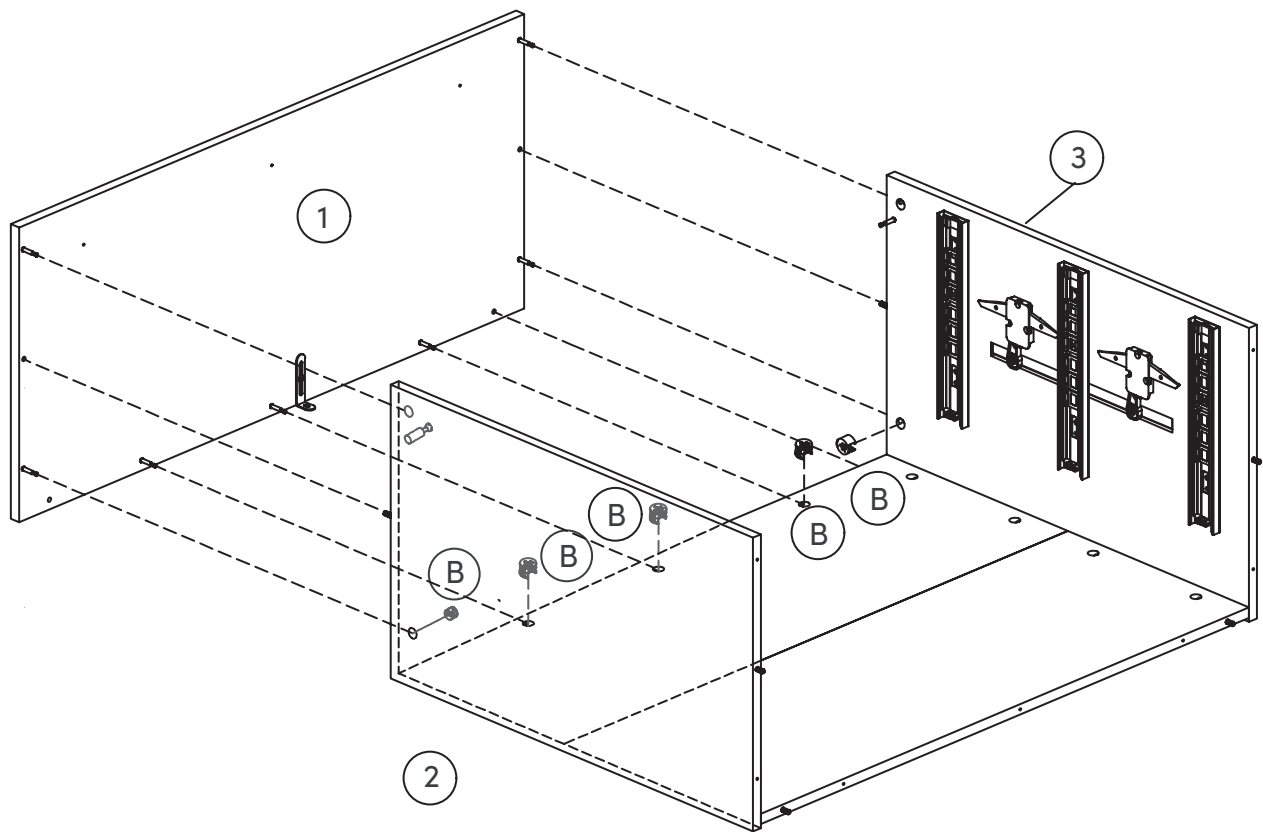
If a cam lock seems to be spinning in place or is not “catching” or pulling the panels together as expected, first remove the cam lock & try again while making sure that everything is properly positioned & oriented.

If you are still having issues getting things working as expected, first remove the cam lock then unscrew the cam bolt slightly (less than 1 complete turn) to see if that helps with the alignment of the cam lock & bolt.

Step 5

B  X5pcs

Now you can take the Top Panel (1) and push it into place on the assembly you have been building. Be sure to secure it into place using the 15 x 9.5 mm Cam Locks (B).



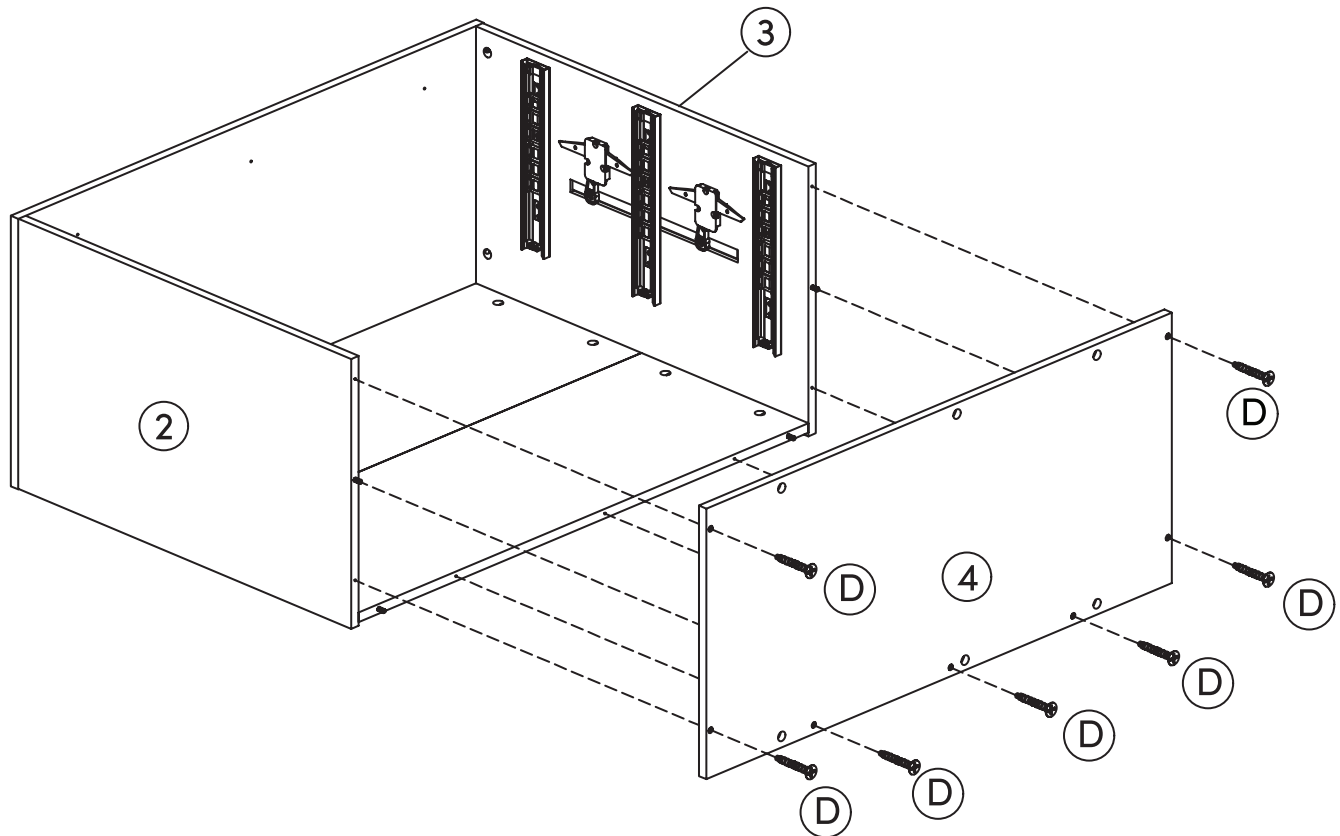
Step 6

D



X 7pcs

We're making good progress! Grab the Bottom Panel (4) and push in into place on the assembly you have been working with. For this step you will grab the M4*50 mm Screws (D) and use them to screw the Bottom Panel (4) into place.



Step 7

D



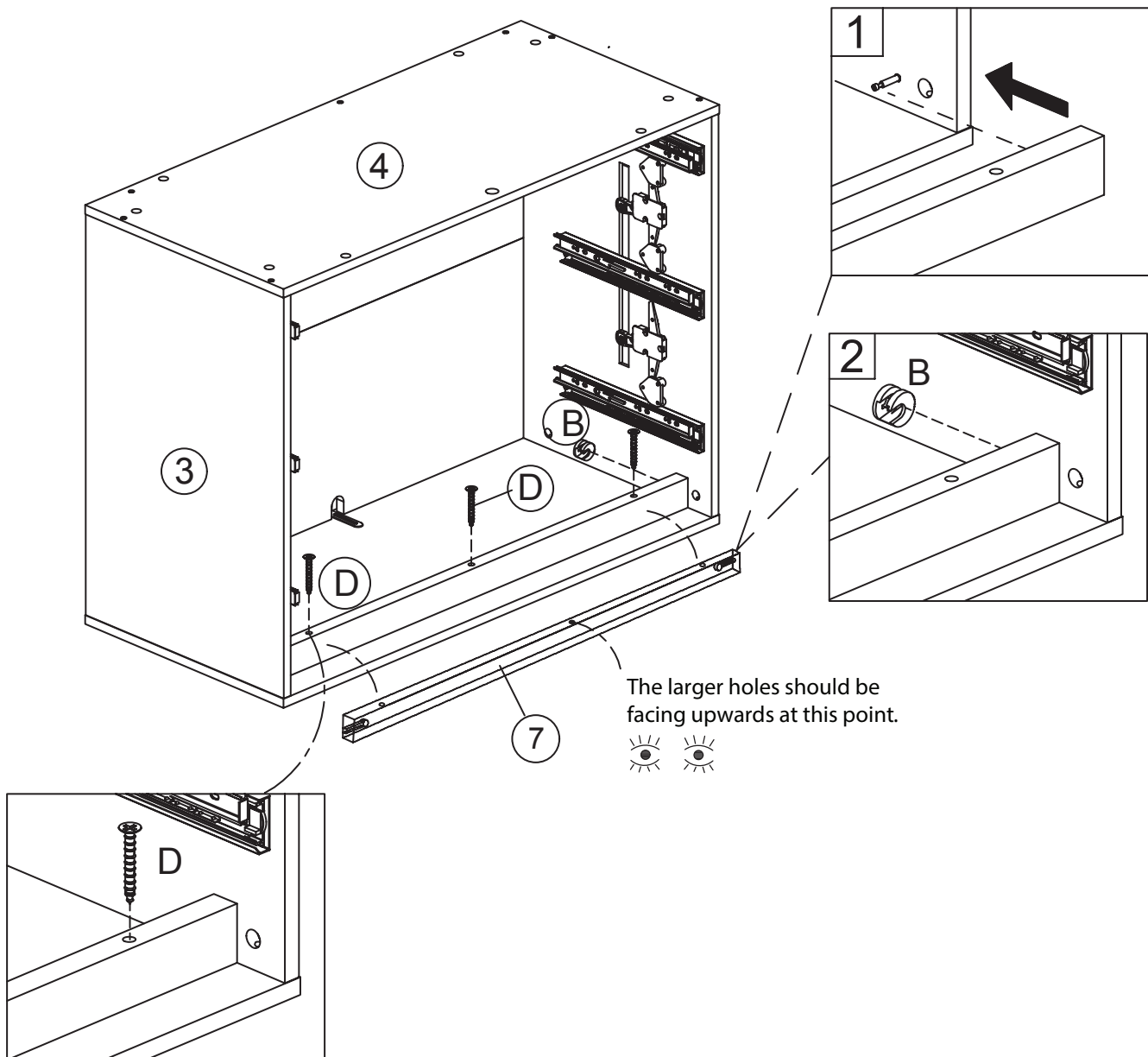
X 3pcs

B



X 2pcs

You will want to grab the Top Wood Stretcher (7) and attach it to the main assembly. Make sure the larger holes are facing upwards at this point. Use the M4*50 mm Screws (D) to screw it into place and the 15 x 9.5 mm Cam Locks (B) to secure everything.

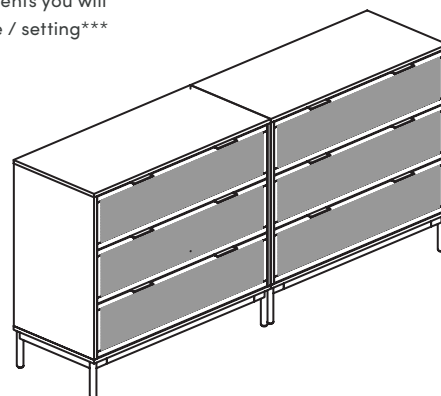
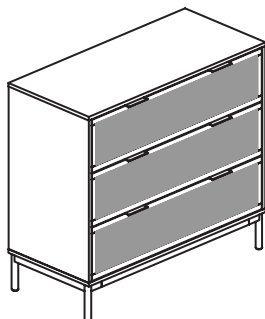
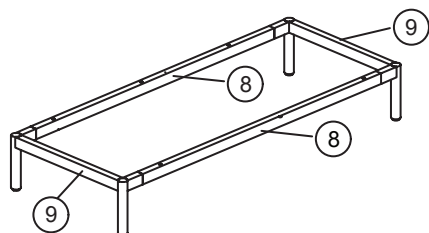


Step 8

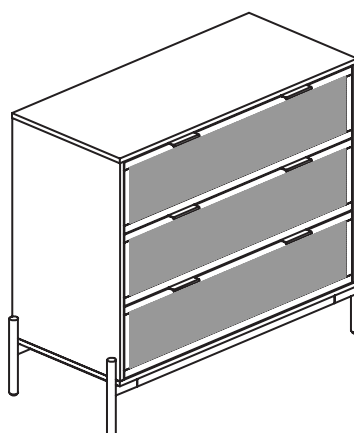
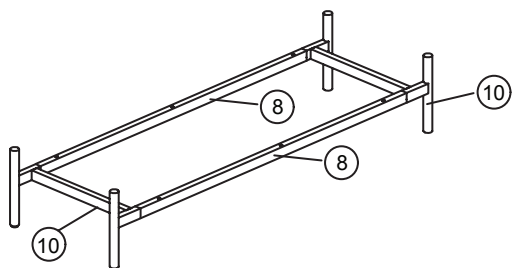
Install the metal base according to your preferences

use the guide below to determine which components you will need to configure your unit(s) to your preferred style / setting
"you will have leftover components"

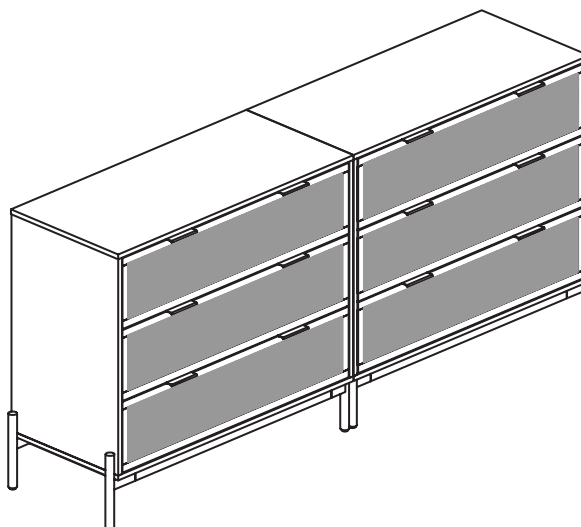
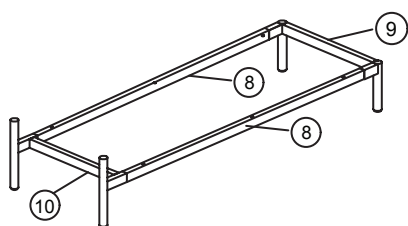
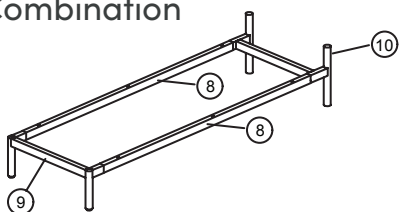
Option 1



Option 2

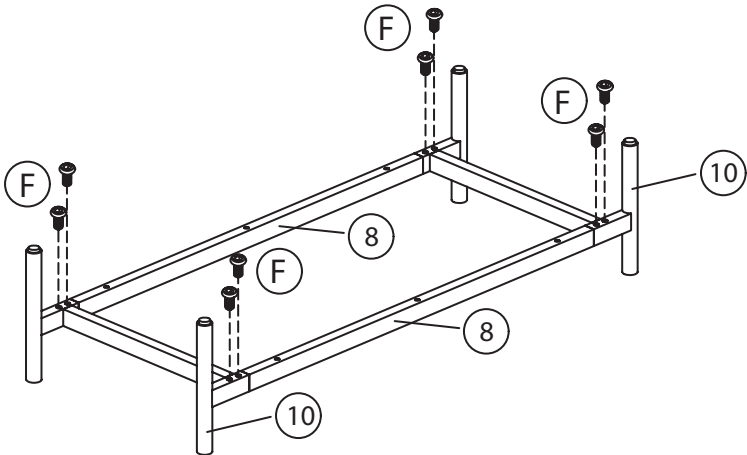
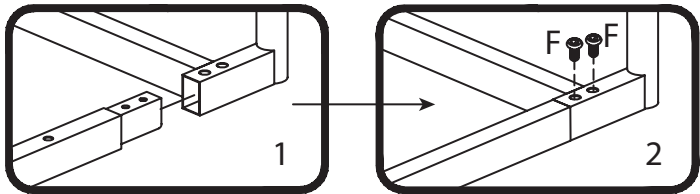
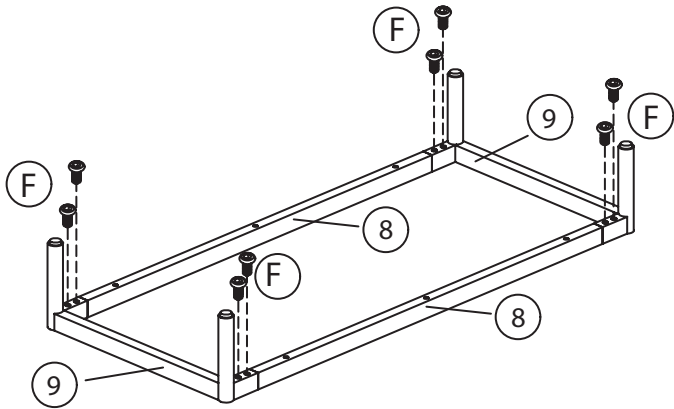
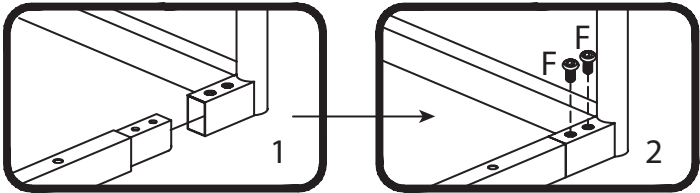


Combination



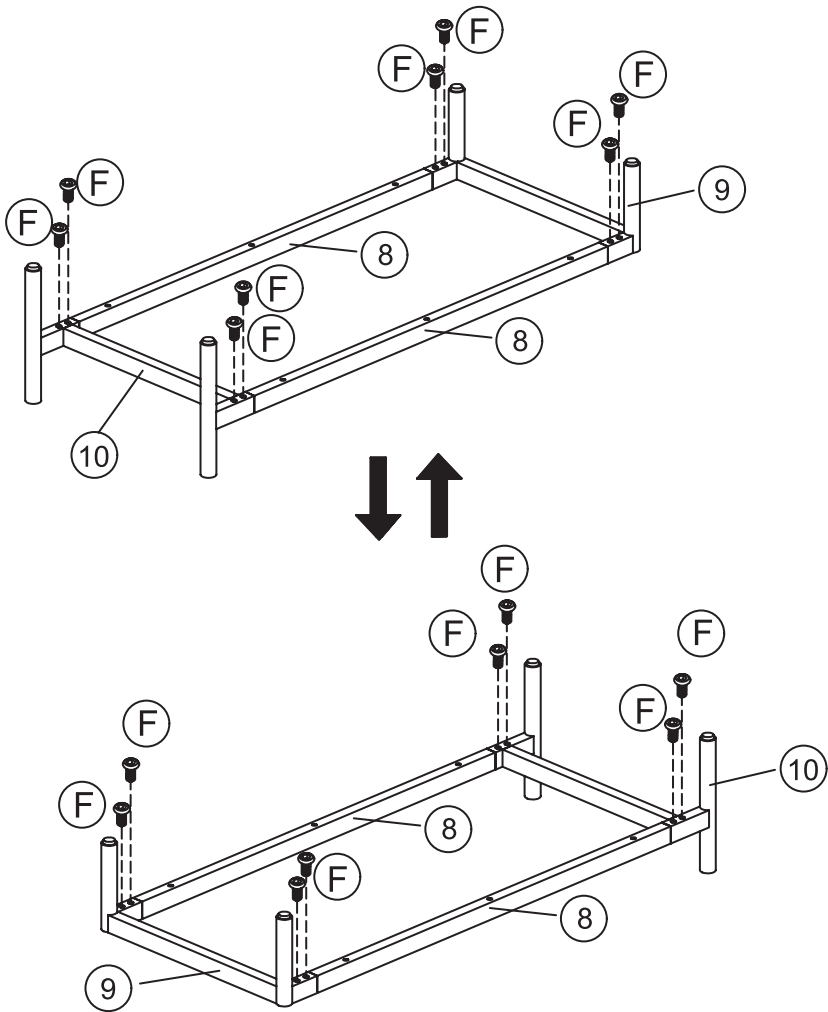
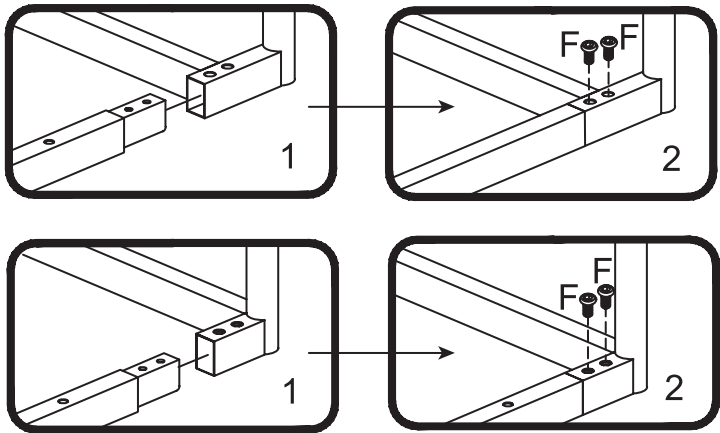
Step 8 (cont.)

F  X 8pcs



Step 8 (cont.)

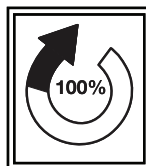
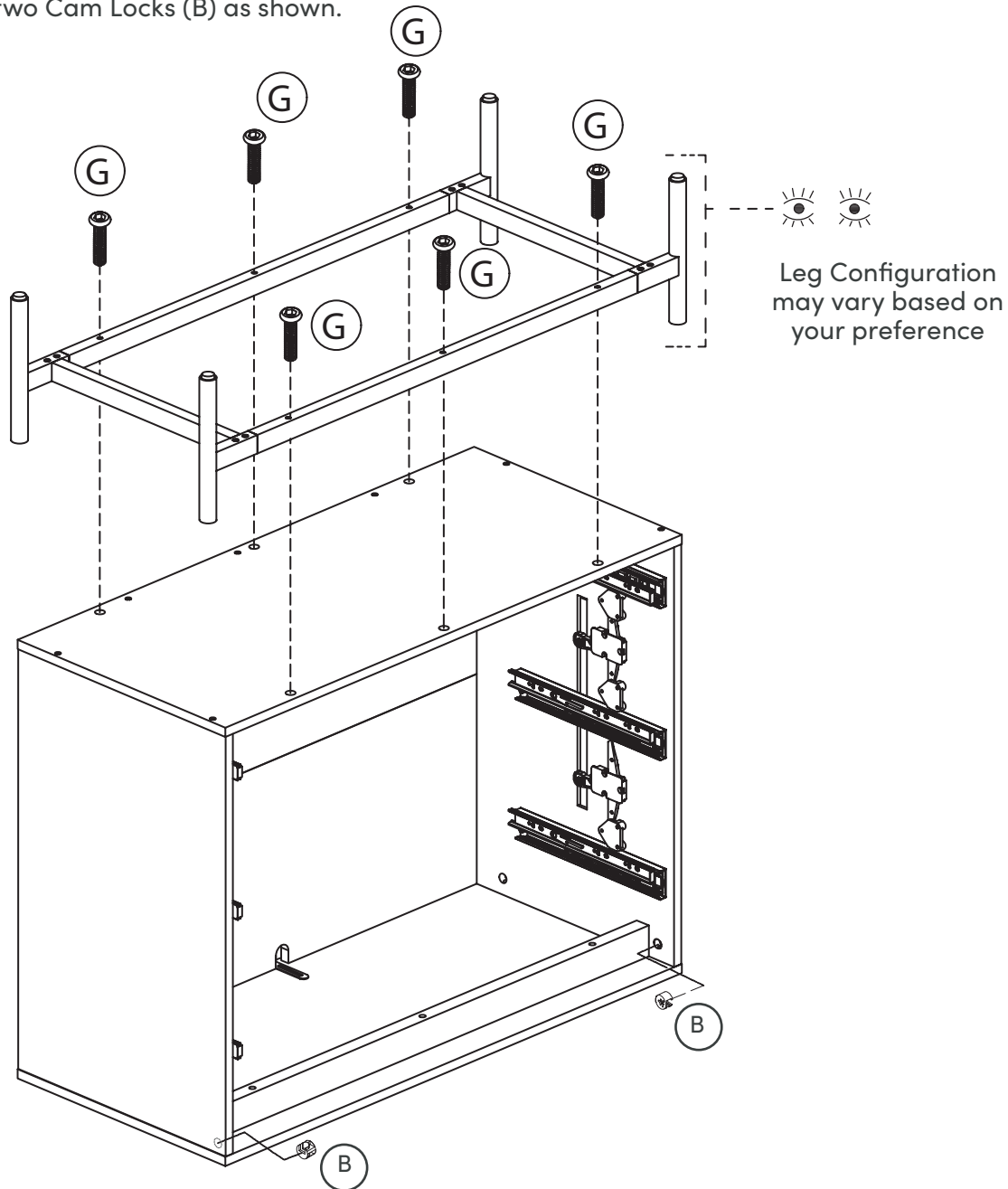
Option 3



Step 9

B  X 2pcs G  X 6pcs

It's time to attach the leg configuration to the main assembly. Use the 1/4" x 40 mm Bolts (G) to attach these two parts together following the image below. Next, insert two Cam Locks (B) as shown.



Once all hardware is lined up in their respective holes, be sure to tighten all fasteners to 100%, including those from Step 8

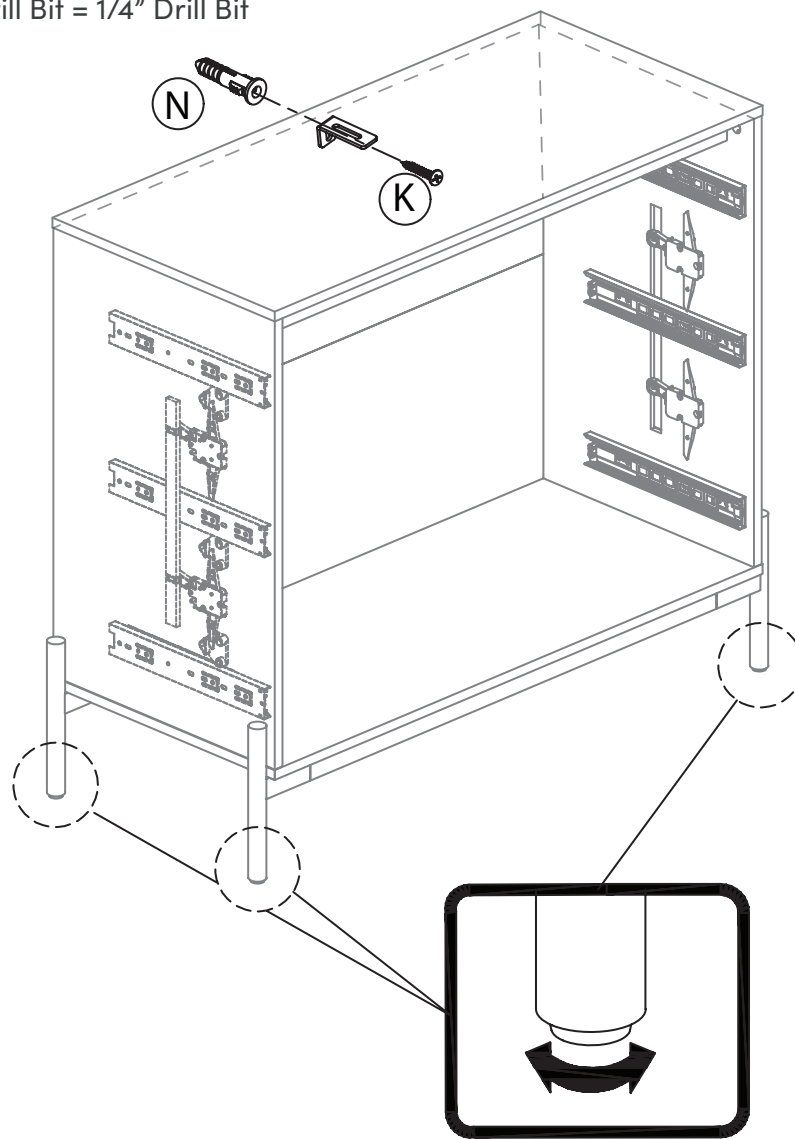
Step 10

K  X 1pc N  X 1pc

Safety first! Time to attach the dresser unit to the wall. Use the Plastic Anchor (N) and the Ø4*35mm Screw (K) to make this happen! Set the unit to be level using the adjustable footpads then begin to secure your unit to your wall.

Drill a 1/4" hole into the wall for the Plastic Anchor (N). Insert the Plastic Anchor (N) in the hole, then secure the Adjustable Anchor Bracket (M) to the wall using the Ø4*35mm Screw (K).

Recommended Drill Bit = 1/4" Drill Bit



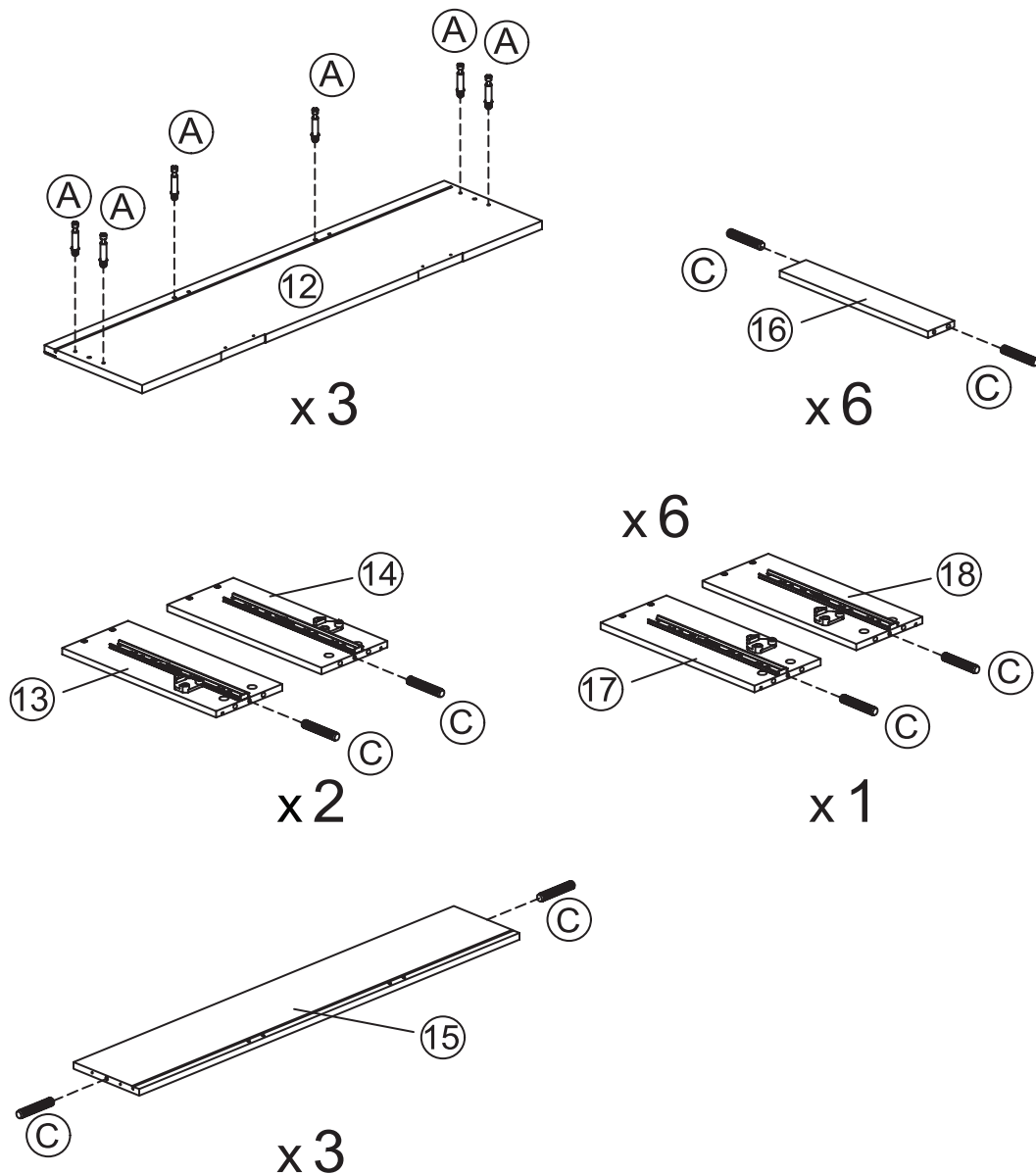
Wobbly or unlevel?
Adjust feet until stable

Step 11

A  X 18pcs C  X 24pcs

Grab the Drawer Front (12) and inserting the M6*35mm Cam Bolts (A) in the corresponding holes.

Next grab the Drawer Side - Left (13), Drawer Side - Right (14), Drawer Back (15), Drawer Side Bottom Support (16), Drawer side left (17), and Drawer Side - Right (18) and insert the M6*30 mm Wooden Dowels (C) to each of the corresponding holes.



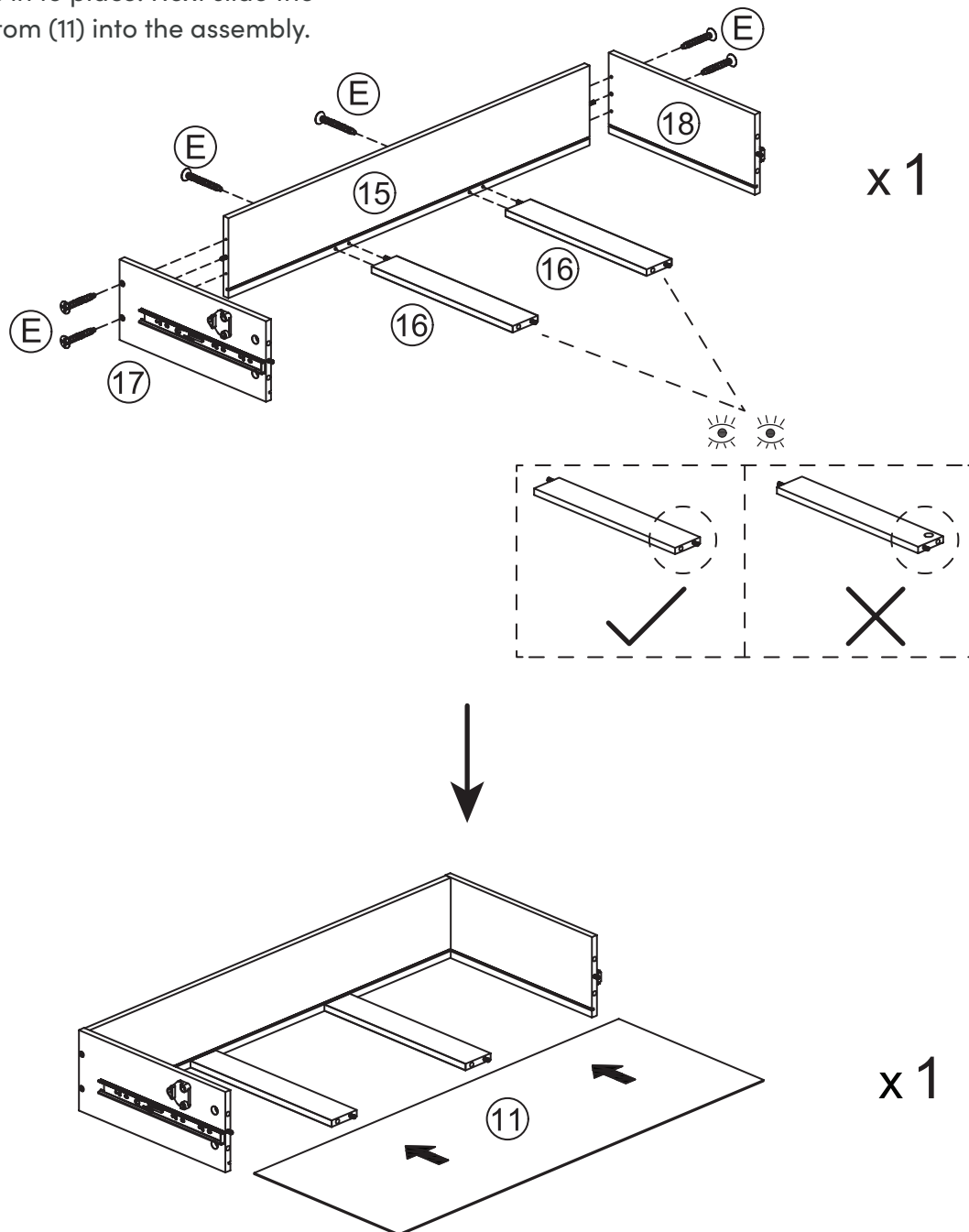
Step 12

E



X 6pcs

Now would be the perfect time for a drink or snack break so you can come back feeling energized! For this step, you will take parts Drawer Side Bottom Support (16), Drawer Bottom (17), and Drawer Side - Right (18) and push them into the Drawer Back (15). You will use the M4*38 mm Screw (E) these pieces in to place. Next slide the Drawer Bottom (11) into the assembly.

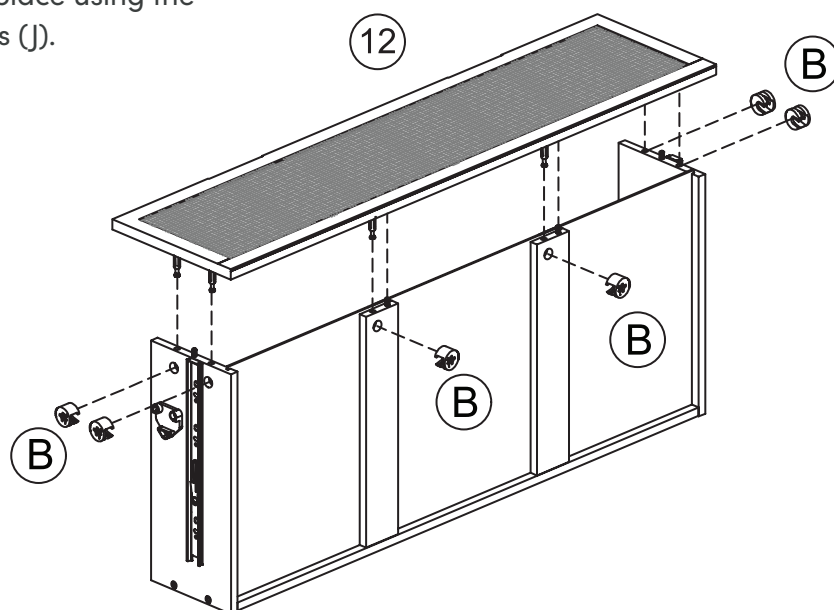


Step 13

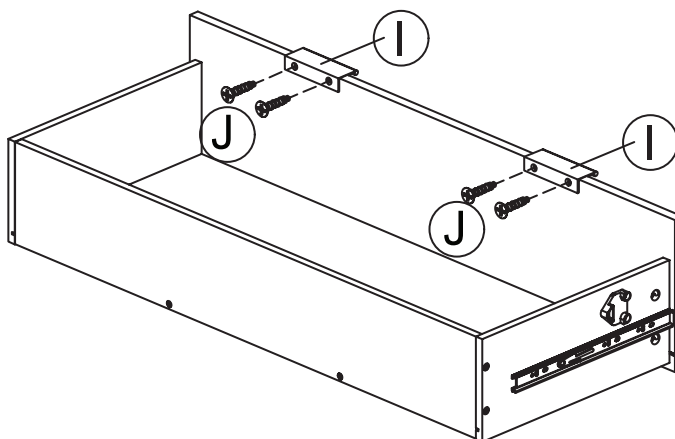
B  X 6pcs J  X 4pcs I  X 2pcs

The drawer is coming together!
Let's attach the Drawer Front (12)
to the assembly we built in the
previous part. Push it into place and
use the 15 x 9.5 mm Cam Locks (B)
to secure it.

Next, flip the drawer right side up
and place the Handle (I) onto the
drawer following the image below
and secure into place using the
Ø3*12mm Screws (J).



x 1



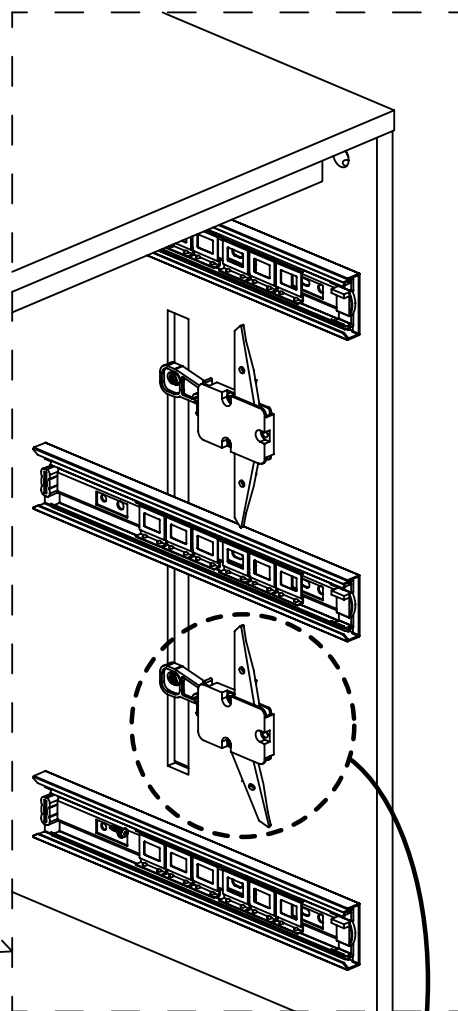
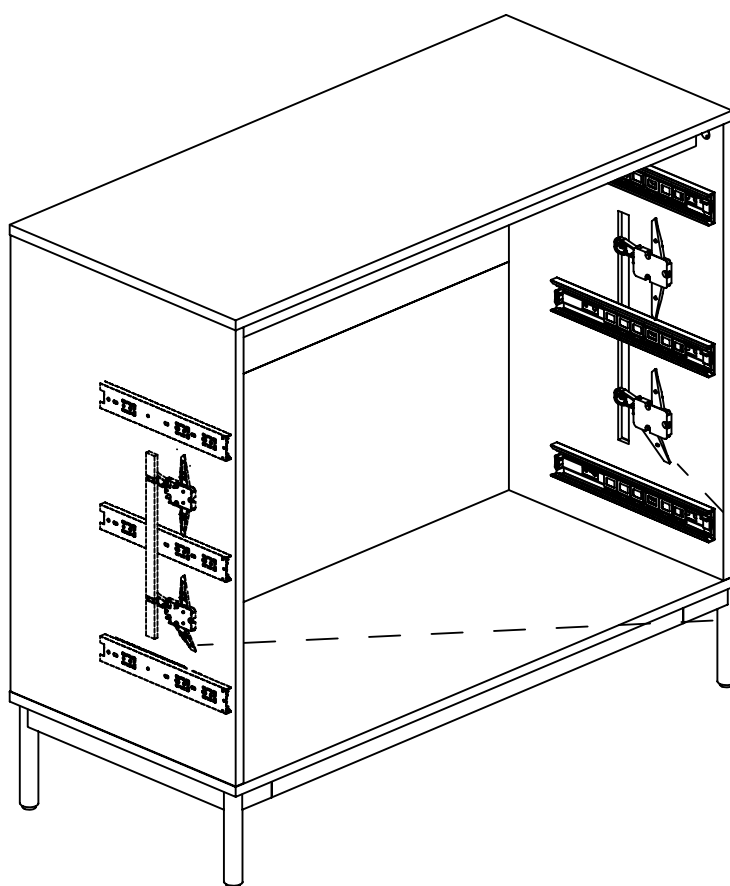
x 1

Step 14

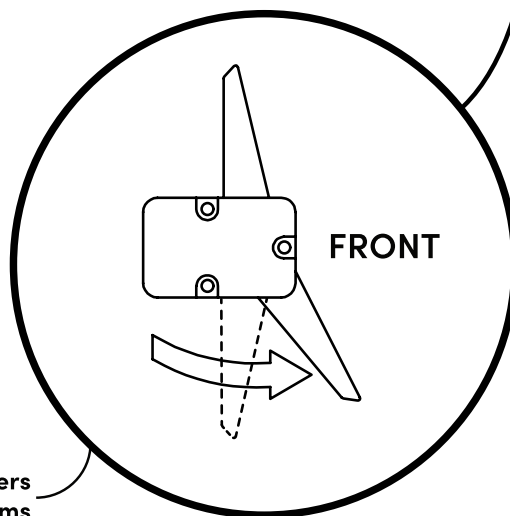
Now we'll install the bottom drawer into the dresser cabinet. As shown below, the bottom levers on the bottom safety mechanism must be placed into the forward position to allow you to be able to install the drawer properly.

You will need an extra set of hands to complete this step.

see following page for continued instructions



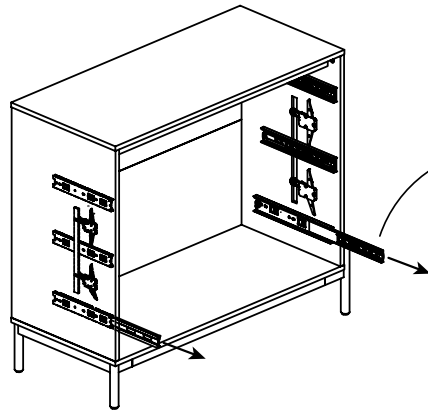
Important Note: As shown in detail on this page, you must place the bottom levers of the bottom safety mechanisms in the forward position when installing the bottom drawer.



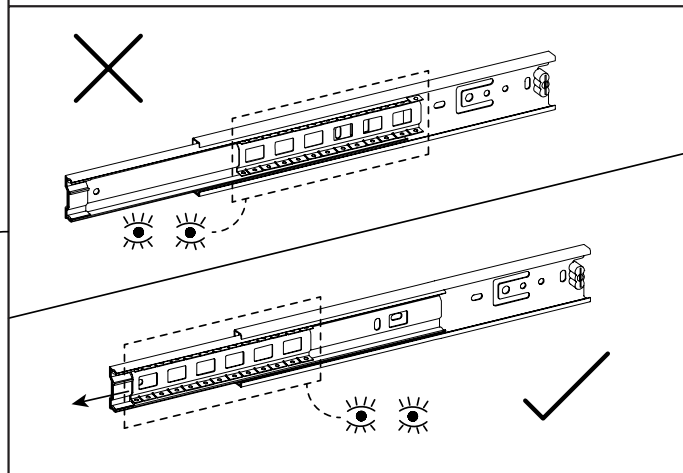
bottom levers
bottom safety mechanisms

Step 14 cont.

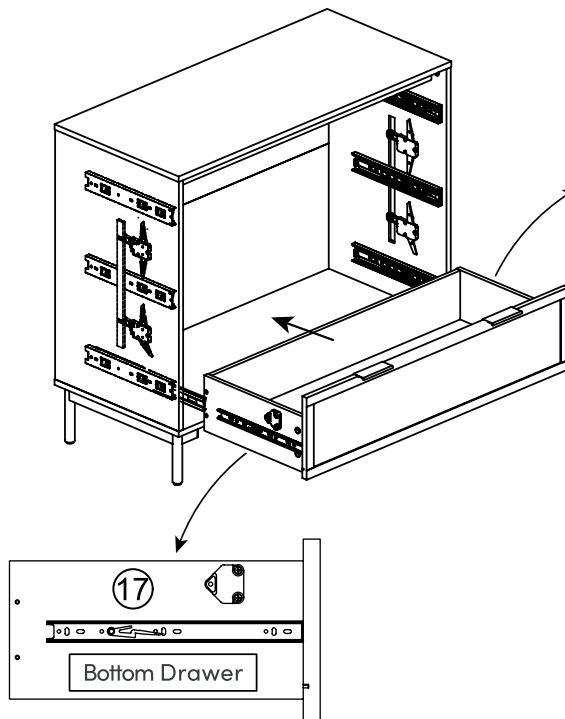
Extend the bottom drawer slides out to full extension. Then be sure that the inner ball bearing slides are pulled to the front as well.



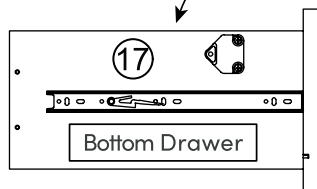
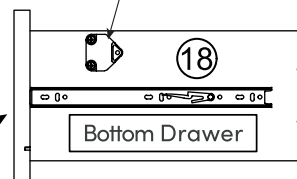
Note: Pull the inner ball bearing slides on each side all the way out until it stops (may be slightly greasy).



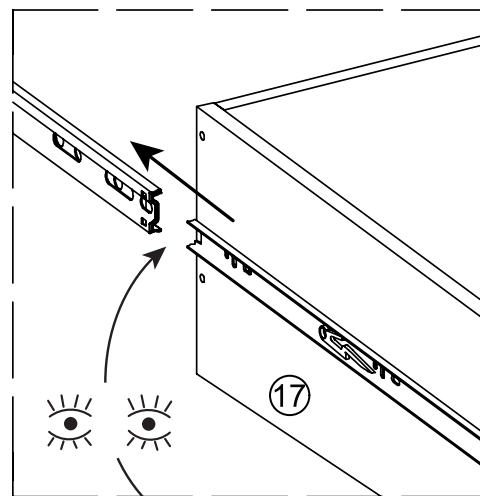
Install the bottom drawer onto the extended bottom slides.



Please note each actuator near the front, top edges of the drawer sides.



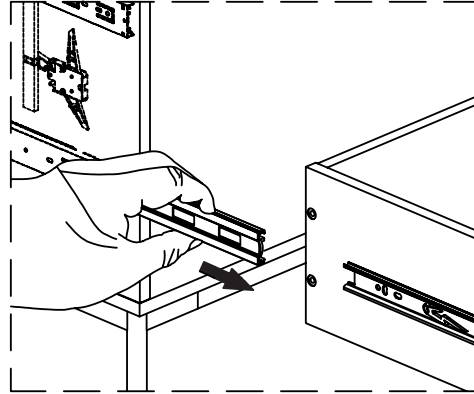
Note: You will need two people to properly install each drawer, so go grab a friend!



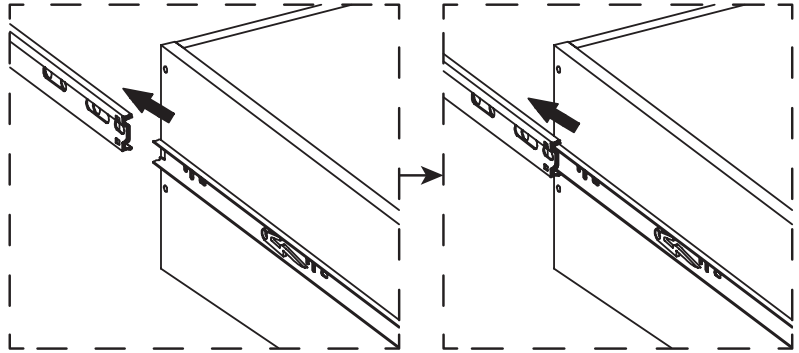
IMPORTANT: see the following page before completing this step

Key Details for Proper Drawer Installation

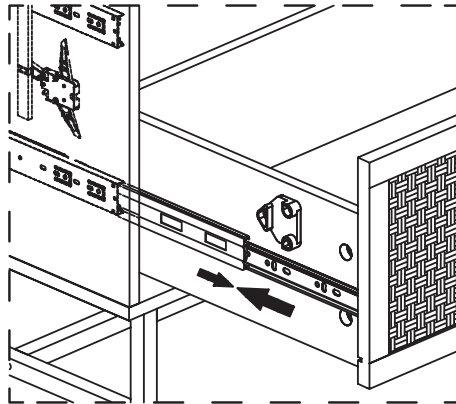
STEP 1: Hold the inner ball bearing slides with your hands during installation of the drawer; do not let it slide back.



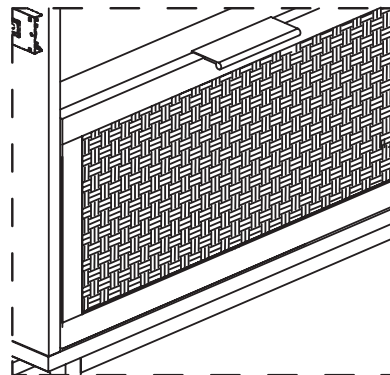
STEP 2: Begin to align the rails on the sides of the drawer with the inner ball bearing slides that are being held in place.



STEP 3: While still holding the inner ball bearing slides, slide the drawer into place by continuing to keep both slide components aligned with one another.



STEP 4: Finally, push the drawer in slowly and simultaneously with both hands until the drawer is completely shut.



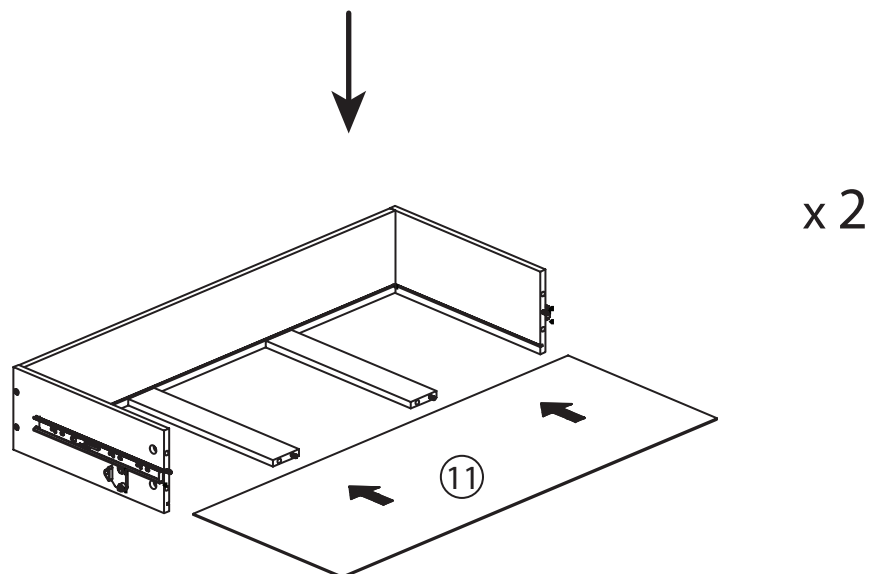
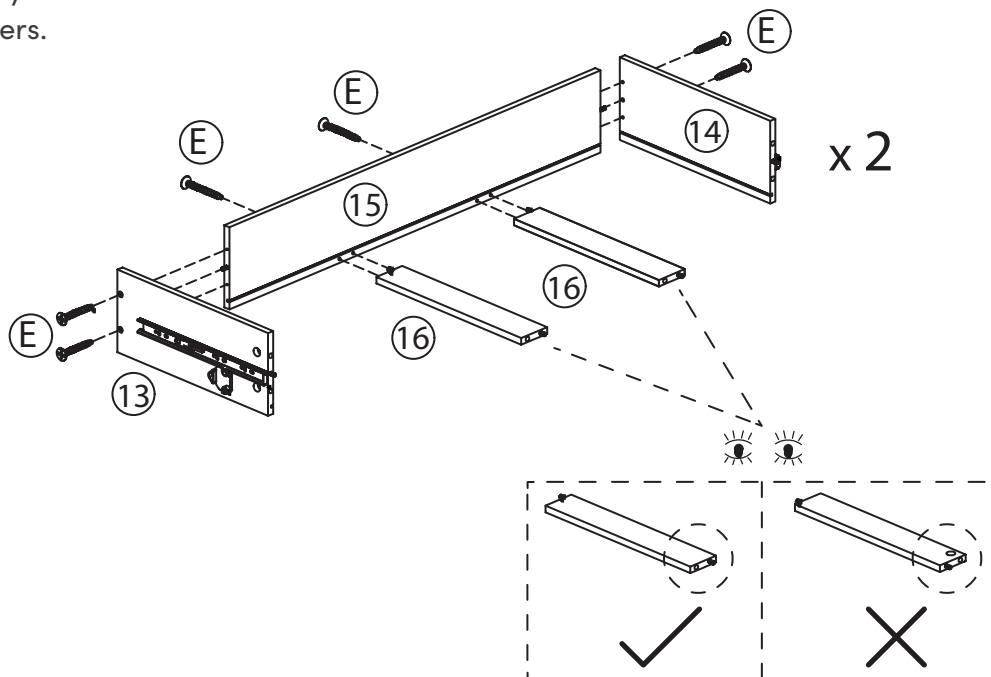
Step 15

E






X 12pcs

Now we will build the next two drawers. Attach the Drawer Side - Left (13), Drawer Side - Right (14), and Drawer Side - Bottom Support (16) onto the Drawer Back (15) using the M4*38 mm Screw (E) in the corresponding holes depicted in the image below. Then slide the Drawer Bottom (11) into place. Make sure you have done this for both drawers.



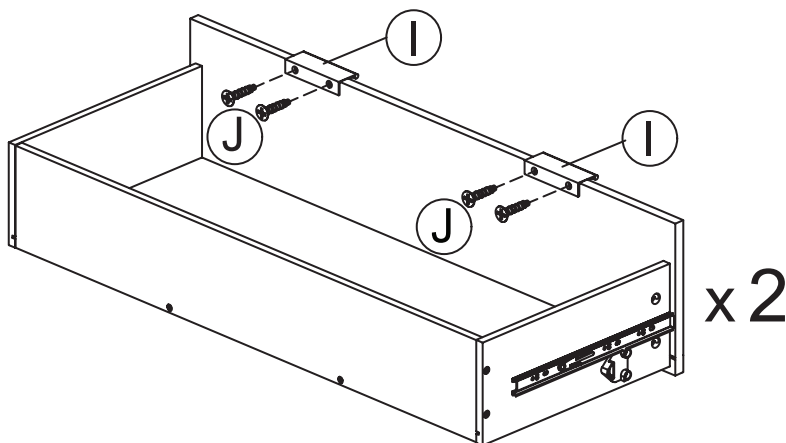
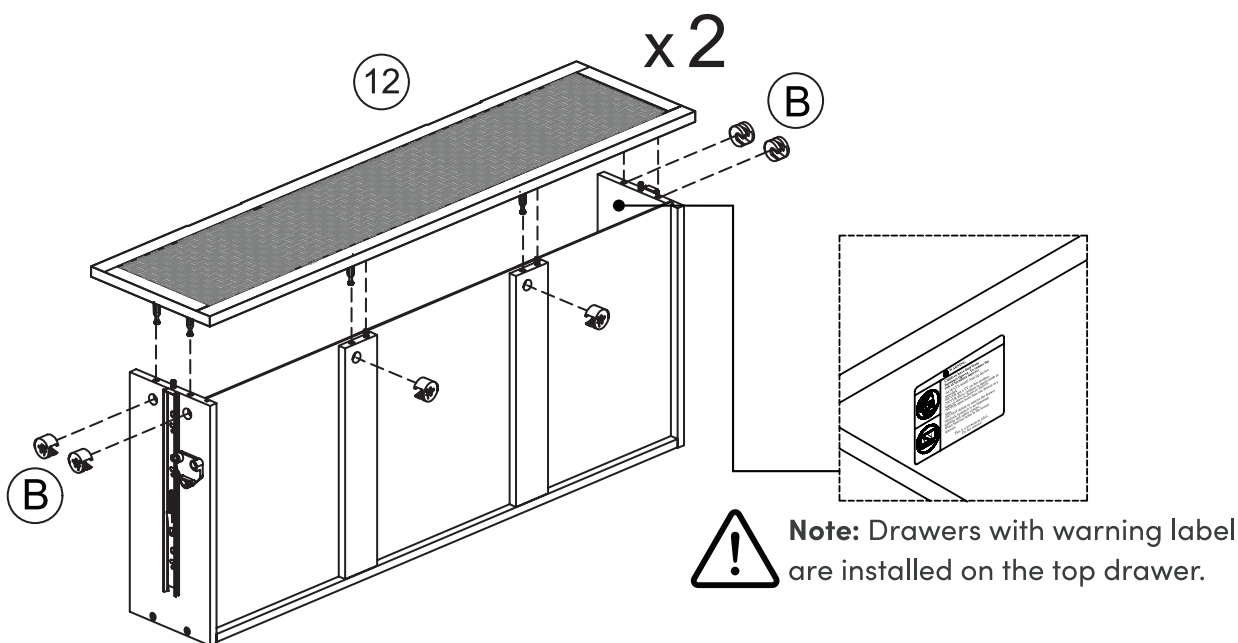
Step 16

B  X 12pcs J  X 8pcs I  X 4pcs

Push the Drawer Front (12) onto the assembly and secure in place with 15 x 9.5 mm Cam Lock (B). Then Attach the Handle (I) to the drawers using the Ø3*12mm Screws (J). Be sure to do this for both drawers.



We want your products to last as long as possible, so we recommend that you tighten the bolts & screws 2 weeks after assembly and for added safety, check the tightness of all bolts & screws every 2 months.

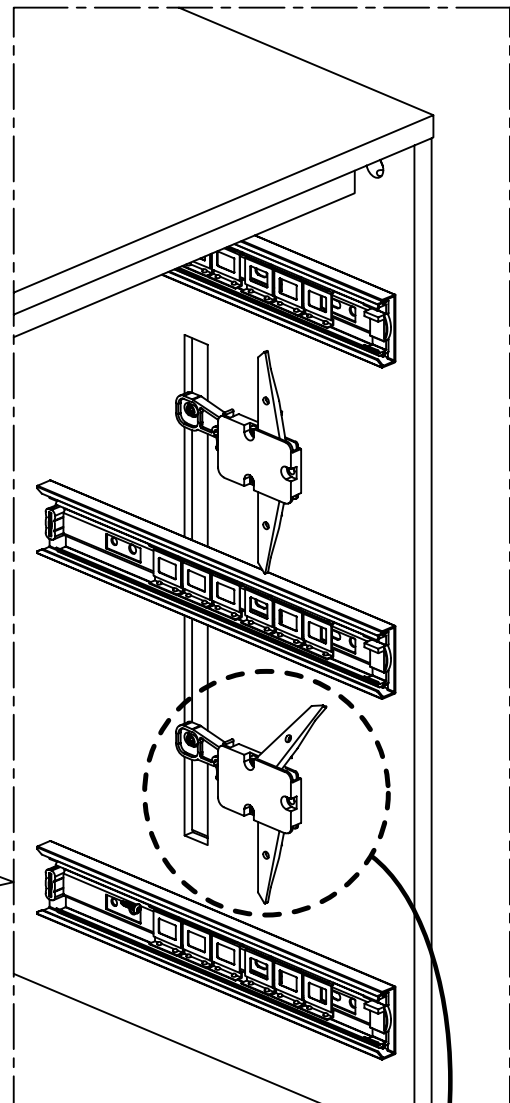
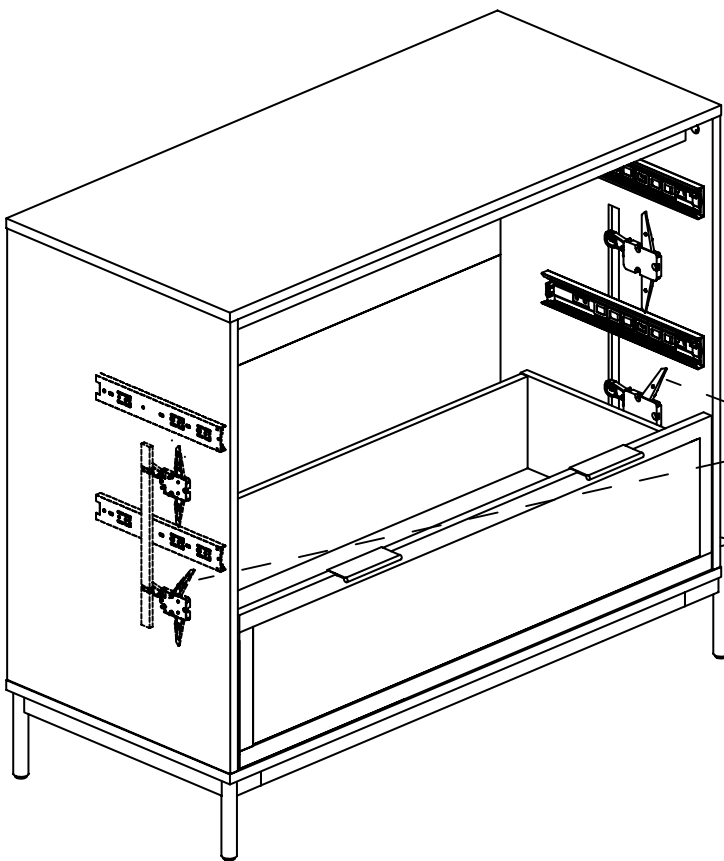


Step 17

see following page for continued instructions

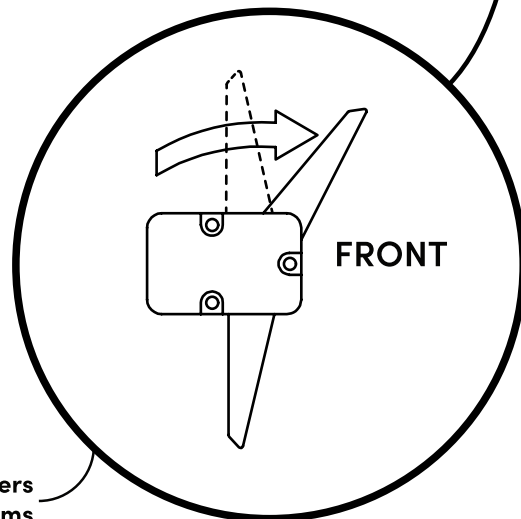
Now follow a similar process as Step 14 to properly install the middle drawer. As shown below, the top levers of the bottom safety mechanisms must be placed in the forward position to allow you to be able to install the drawer properly.

You will need an extra set of hands to complete this step.



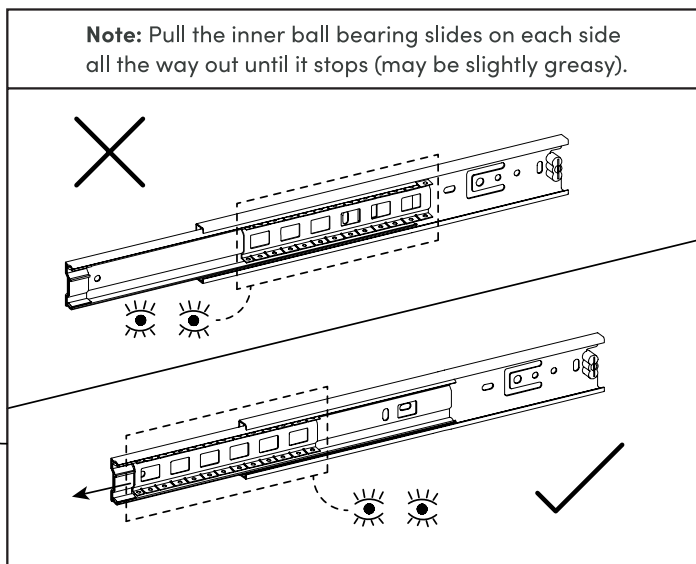
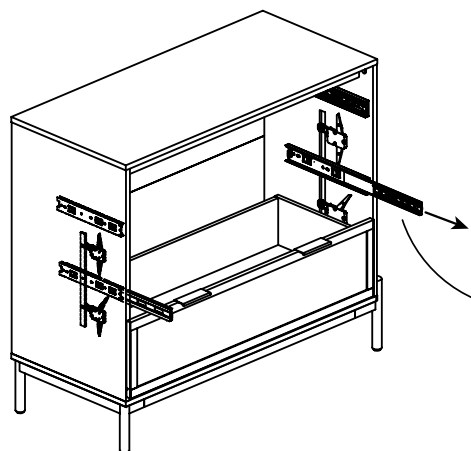
Important Note: As shown in detail on this page, you must place the top levers of the bottom safety mechanisms in the forward position when installing the middle drawer.

All other drawers must be completely closed prior to completing this step.

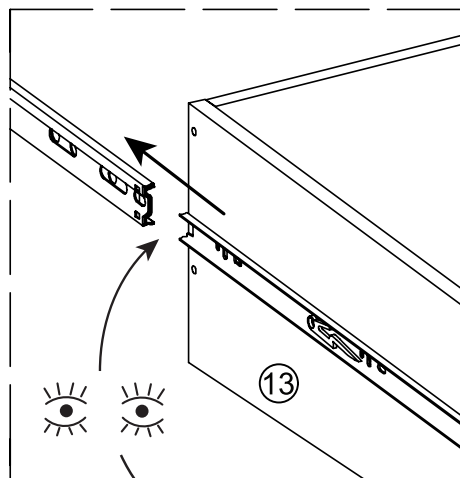
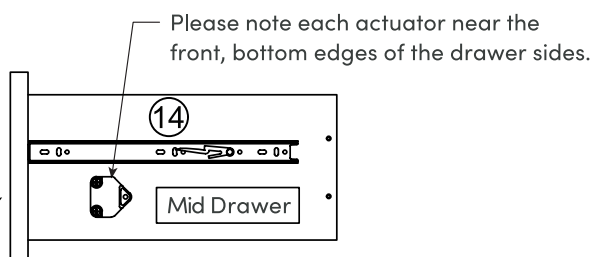
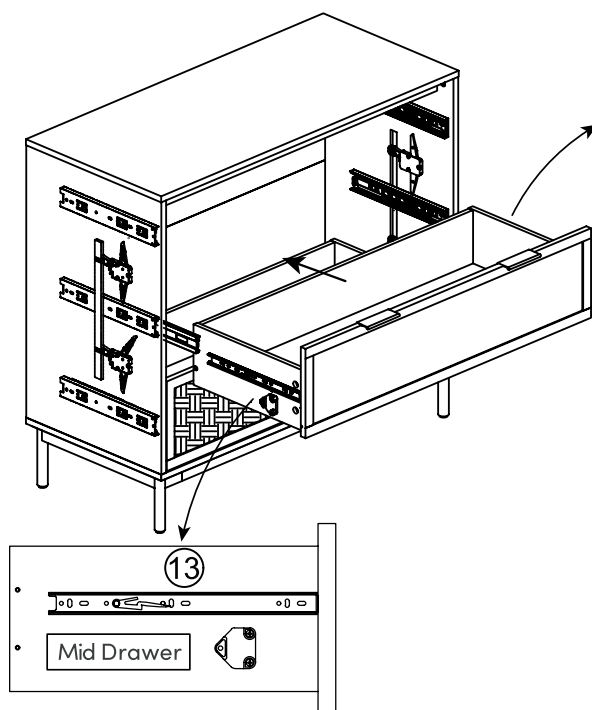


Step 17 cont.

Extend the middle drawer slides out to full extension. Then be sure that the inner ball bearing slides are pulled out to the front as well.



Install the middle drawer onto the extended middle slides.



Note: You will need two people to properly install each drawer, so go grab a friend!

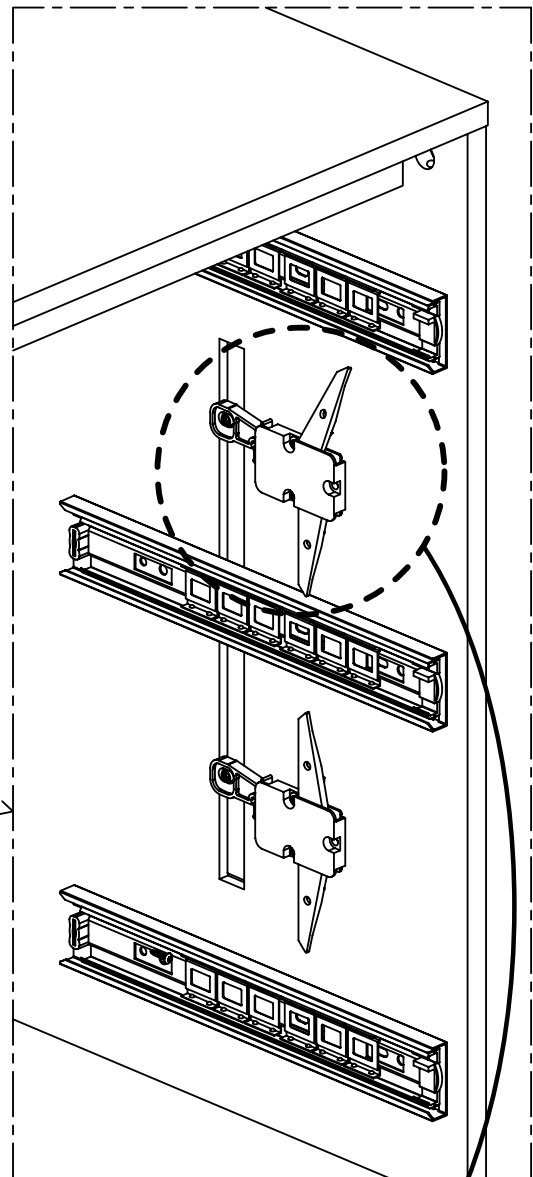
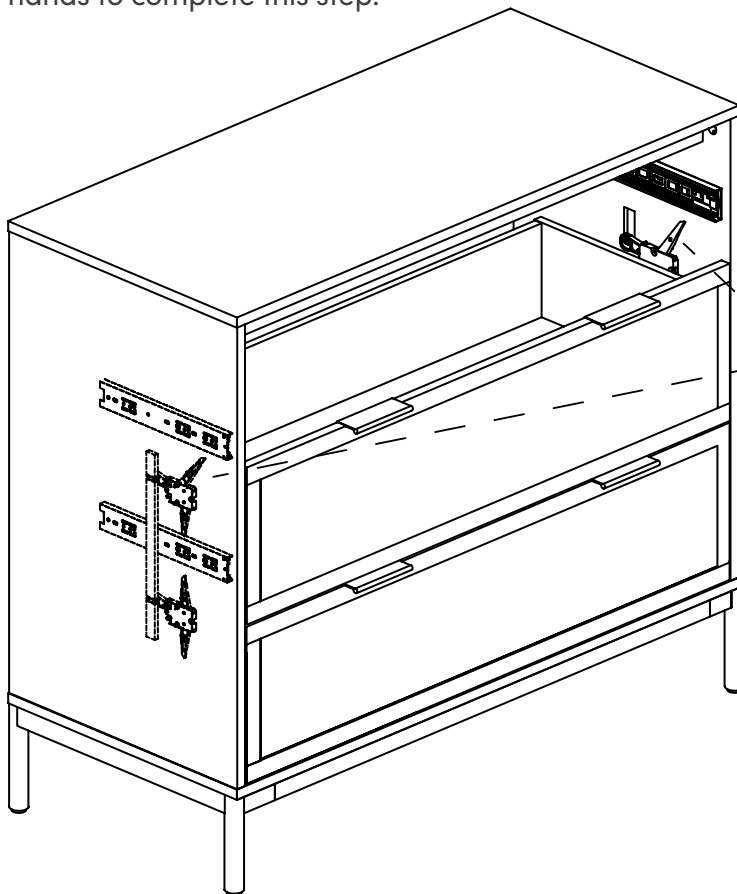
see previous "KEY DETAILS FOR PROPER FINAL DRAWER INSTALLATION" page before fully completing this step

Step 18

see following page for continued instructions

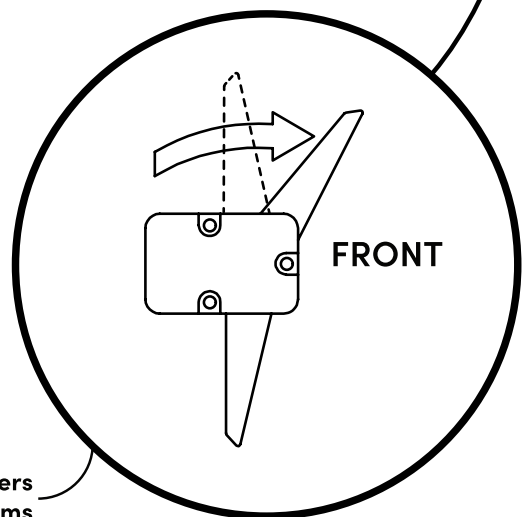
Now follow a similar process to Step 17 to properly install the top drawer. As shown below, the top levers of the top safety mechanisms must be placed into the forward position to allow you to be able to install the drawer properly.

You will need an extra set of hands to complete this step.



Important Note: As shown in detail on this page, you must place the top levers of the top safety mechanisms in the forward position when installing the top drawer.

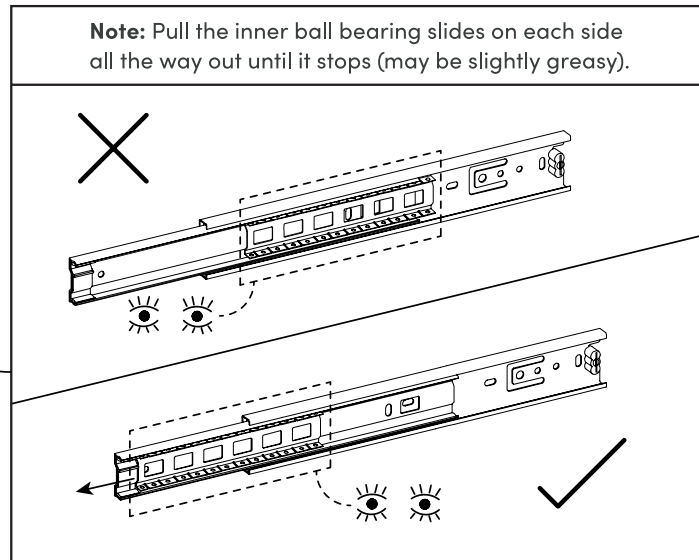
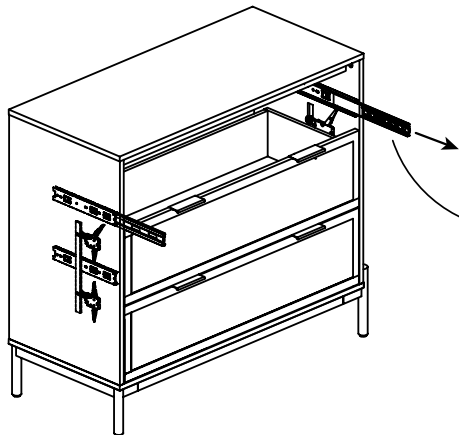
All other drawers must be completely closed prior to completing this step.



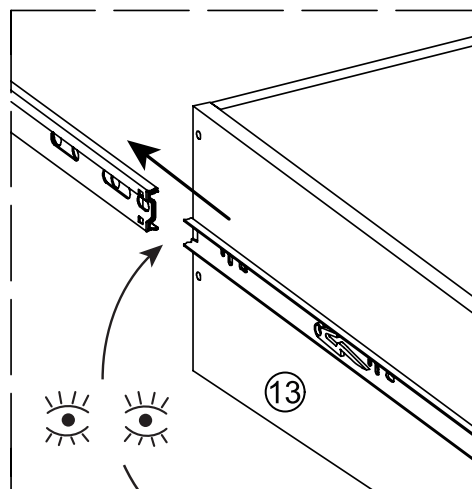
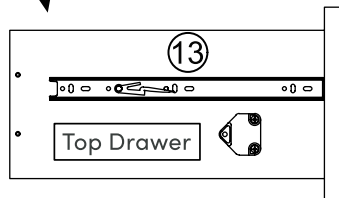
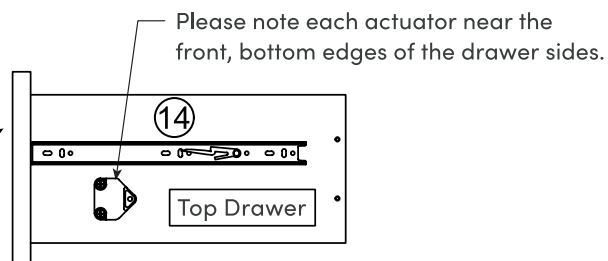
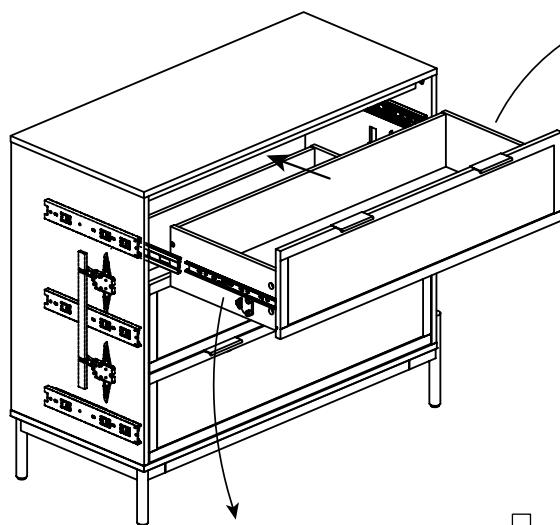
top levers
top safety mechanisms

Step 18 cont.

Extend the top drawer slides out to full extension. then be sure that the inner ball bearing slides are pulled to the front as well.



Install the top drawer onto the extended top slides.



see previous "KEY DETAILS FOR PROPER FINAL DRAWER INSTALLATION" page before fully completing this step



Note: You will need two people to properly install each drawer, so go grab a friend!

Step 19

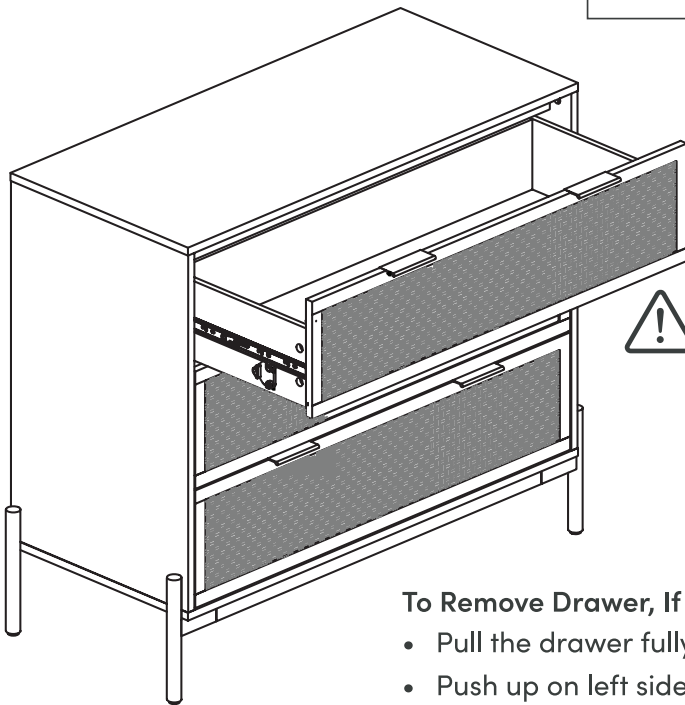
IMPORTANT NOTE

Young children (and/or pets) can be seriously injured by tipping furniture units.

You must install the provided anti-tip kit hardware solution, as instructed, to prevent the furniture unit(s) from tipping over – which could possibly lead to injuries or damage.

The provided anti-tip kit hardware solution is intended only as an additional safety measure & deterrent; it is not a substitute for proper adult supervision.

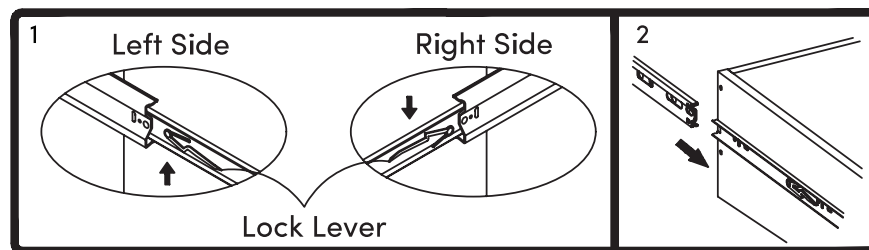
The provided anti-tip kit hardware solution is not an earthquake restraint. If you wish to add the extra security of earthquake restraints, they must be purchased & installed separately.



NOTE: Only one drawer can be opened at a time.

To Remove Drawer, If Needed

- Pull the drawer fully open so levers are visible.
- Push up on left side lever and down on right side lever.
- Holding levers in place, pull drawer toward you.



Warning: Risk of injury to persons – do not place a television on this furniture.
This furniture is not approved for use with a television.

No heartburn, when we handle the return

Give us a call **1-866-619-1004** or shoot us a message at **help@nathanjames.com** we will issue you a free replacement with **zero hassle**.

Our way



Give us a call



Replacement



You

Their way



Re-package item



Schedule pick up



Track package



Replacement



You

We really don't want you to go through the hassle of re-packaging your item and sending it back, because let's be honest...nobody has time for that.

Safety first, fun later

We want your product to last as long as possible, so we recommend that you tighten the screws 2 weeks after assembly and for added safety check the tightness of all screws every 2 months.

For proper care and treatment, please check our website at NathanJames.com/products

Safe use of this product starts with you.

Use this product responsibly with the primary concern for your safety. Follow assembly instructions carefully and inspect product upon receipt and each use.

Nathan James and its parent companies cannot be held legally responsible for any injuries or death resulted from failure to follow instructions or improper use of this product.

Do not modify the structure of this product in any way.

Our products have been tested to meet specific safety measures as they were originally intended to be sold. Any modifications will present the risk of creating significant safety issues which NJ will not be responsible for.

Proper use

- | | |
|---------------|---------------------------------|
| DO NOT | use for commercial purposes |
| DO NOT | frolic on dresser |
| DO NOT | use dresser as foot stool |
| DO NOT | leave spilled liquid on dresser |
| DO NOT | use dresser if damaged |
| DO NOT | make temporary repairs |
| DO NOT | use outdoors |

We are only in business if you're happy

For starters, thanks for being you.

☎ Toll-free at 1-866-619-1004

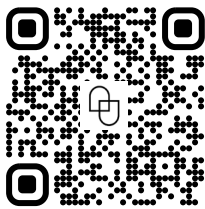
✉ Help@nathanjames.com

🌐 NathanJames.com/help

We do our best to ensure your furniture arrives without any problems, but occasionally mistakes happen—as humans we are imperfect beings. In the event that a part is damaged or missing, we will be more than happy to provide you with replacement part(s) for free.

Warranty

This product comes with a lifetime warranty from the date of purchase. Please use your phone to scan the QR code to register your product or visit <https://goo.gl/i9dk3q>



Did we do alright? Please spread the love!

If you are happy with your product, tell your friends and family about us or even better leave us a review online. Spreading the word gives us the opportunity to make more people happy and keep our prices low for your next purchase.

Brooklyn Burdon

Founder, Nathan James