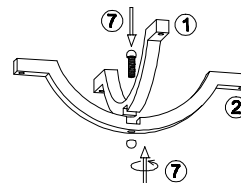
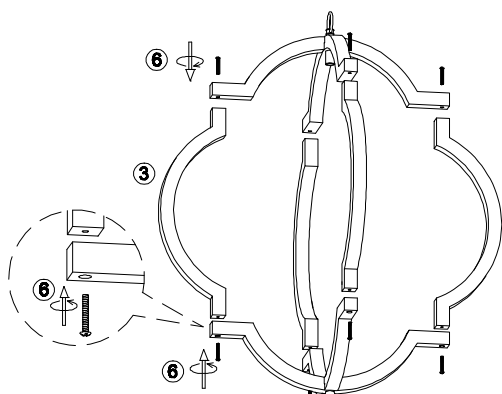


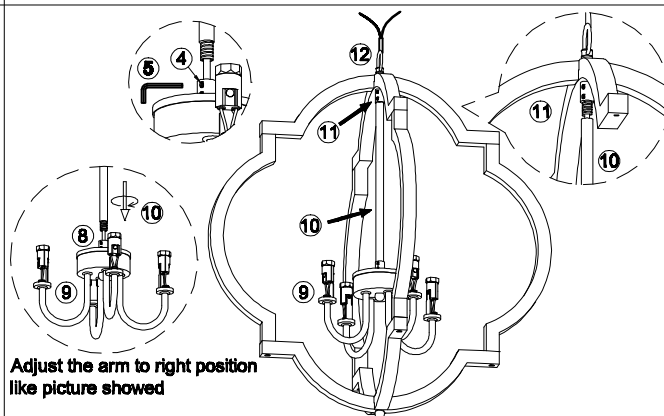
1. Install wood profile (upper joint) 1 and wood profile (downward joint) 2 together with hanging ring 12 and connected thread 11.



2. Install wood profile (upper joint) 1 and wood profile (downward joint) 2 together with thread rod and nut 7.

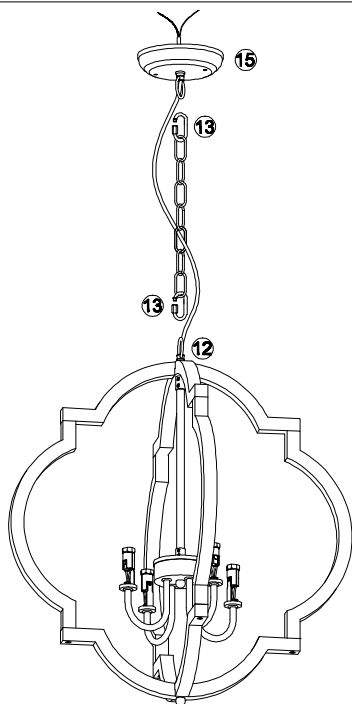


3. Complete whole wood frame by screw bolts 6 (top part + 4 pcs wood profile + down part).

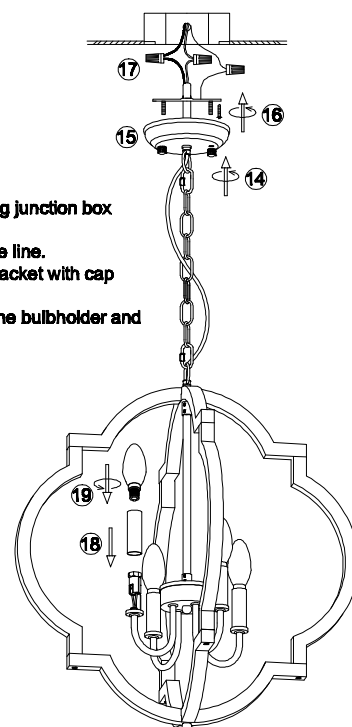


Adjust the arm to right position like picture showed

4. Let the wire of the light fixture 9 go through hanging tube 10, rotate to fasten the tube 10 on the fixture 9 and lock it with grub screw 4. (use hex key 5 to lock the grub screw 4)
 5. Let the wire go through the hanging ring 12, rotate to fasten the tube 10 to the connected thread 11 and lock it with grub screw 4. (use hex key 5 to lock the grub screw 4)



6. Connect the light fixture and the canopy 15 with chain 13 by carabiner hook screw connection.



7. Install the bracket to the ceiling junction box with screw 16.
 8. Connect the wire to your home line.
 9. Install the canopy 15 to the bracket with cap nuts 14.
 10. Put the cylinder tube 18 on the bulbholder and install the bulb 19.

D5020S-4

Please read carefully before installation!!!

Note : Please make sure that the electricity is powered off during installation !

Only a professional electrician should install this kind of product !