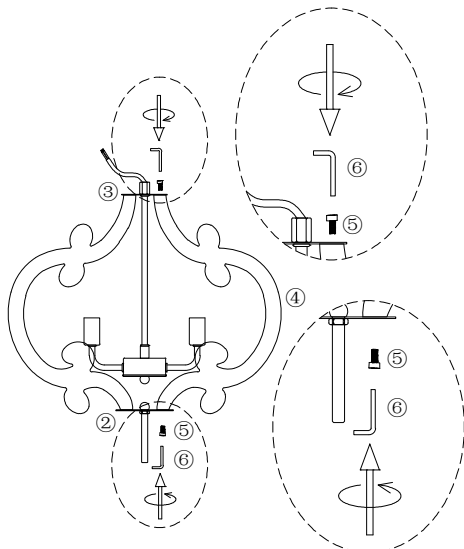
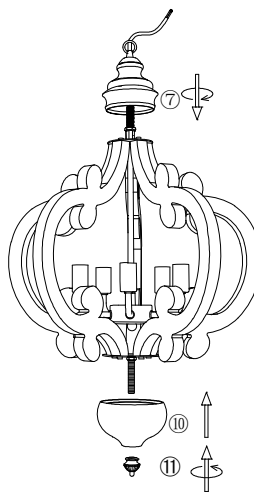


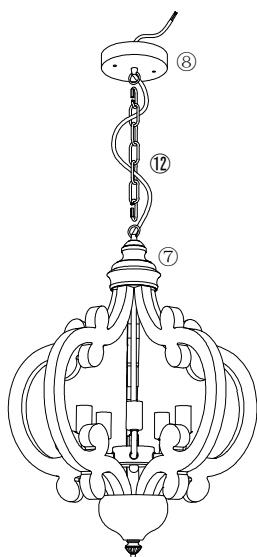
1. Let the wire go through the hanging tube ③, rotate to fix the tube ③ to the fixture ①.



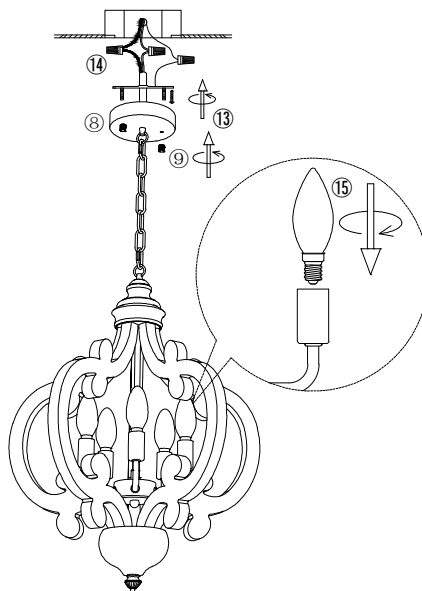
2. Install the wooden profile ④ from the hole of tube ③ to the hole of plate ② with screw ⑤. (after installed the wooden profiles, adjust to the suitable position, the screw should not be too tight to avoid damaging the wooden profile.)



3. Let the wire go through the top cover ⑦, rotate to fix the cover ⑦ to the fixture, close the bottom cover ⑩ to the fixture with end cap ⑪.



4. Hang the fixture to the canopy ⑧ with chain ⑫, let the wire go through the chain ⑫ and canopy ⑧.



5. Install the bracket to the ceiling junction box with screw ⑬.
6. Connect the wire to your home line with cap connector ⑭.
7. Install the light fixture to the bracket with cap nuts ⑨.
8. Install the bulb ⑮.

ZJD00012-5

Please read carefully before installation!!!

Note : Please make sure that the electricity is powered off during installation !

Only a professional electrician should install this kind of product !