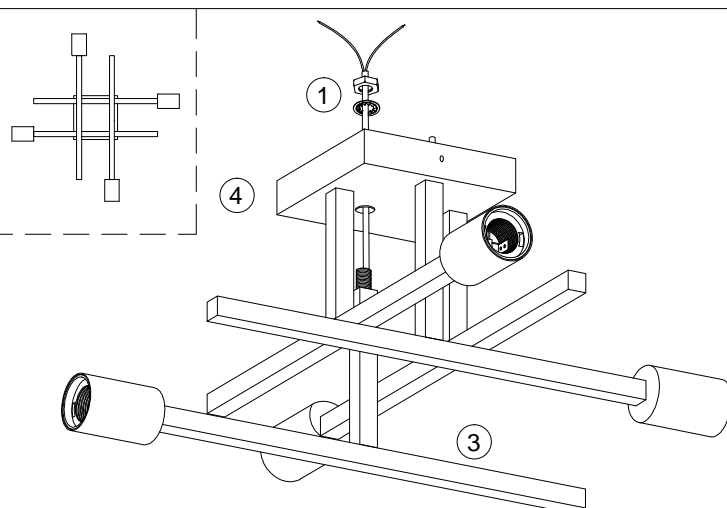


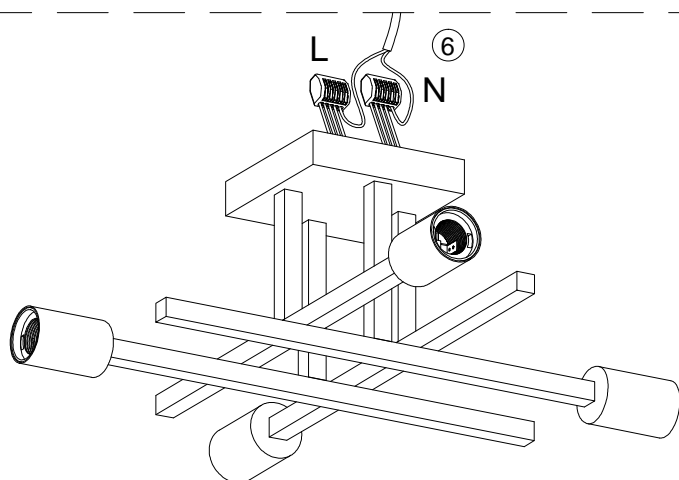
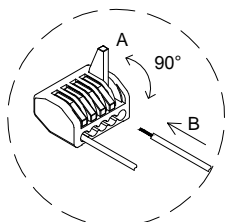
1.Install the short arms ② on the canopy ④ with lock nut and teeth lock washer ①.



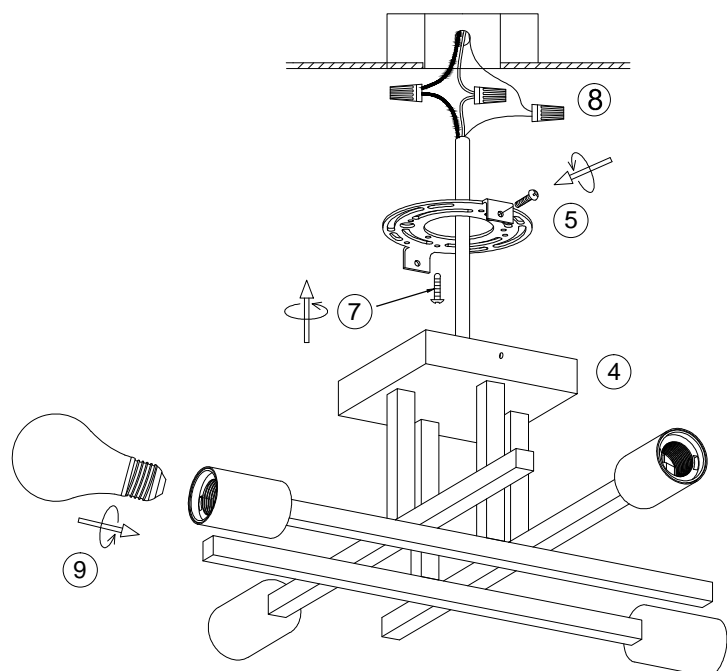
2.Install the long arms ③ on the canopy ④ with lock nut and teeth lock washer ①.

1.Pull the orange operating handle A to open the inlet hole, insert the wire B.

2.Press the operating handle A to finish wiring.(Note: one inlet hole can put 2 or 3 wires inside)



3.Connect all the wires by parallel with splicing connector ⑥(all live line-L use one connector, and neutral Line-N use another connector).



4.Install the bracket ⑦ on the junction box with screw.

5.Connect the wire ⑧ to your home line.

6.Install the fixture on the bracket with screw ⑤.

7.Install the bulbs ⑨.

#### X0091-4

Please read carefully before installation!!!

Note : Please make sure that the electricity is powered off during installation !

Only a professional electrician should install this kind of product !