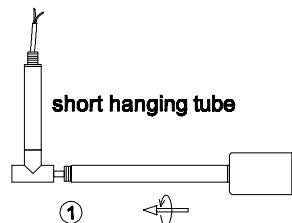
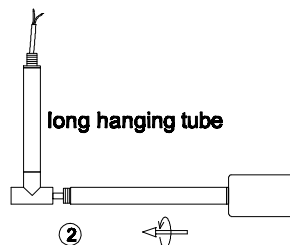


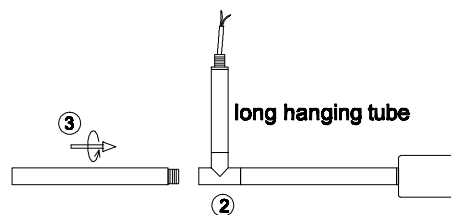
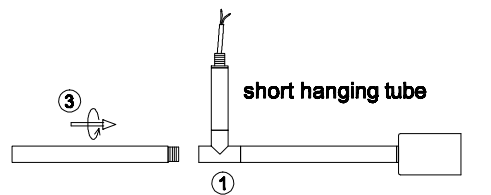
**Do not pull out the wire!!!!**



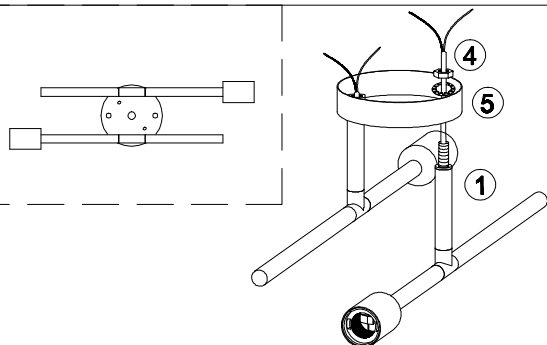
**Do not pull out the wire!!!!**



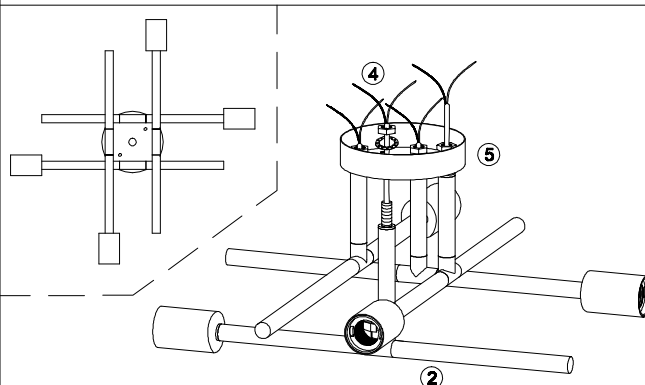
1.Rotate to install the light arm ① & ② to the hanging tube.



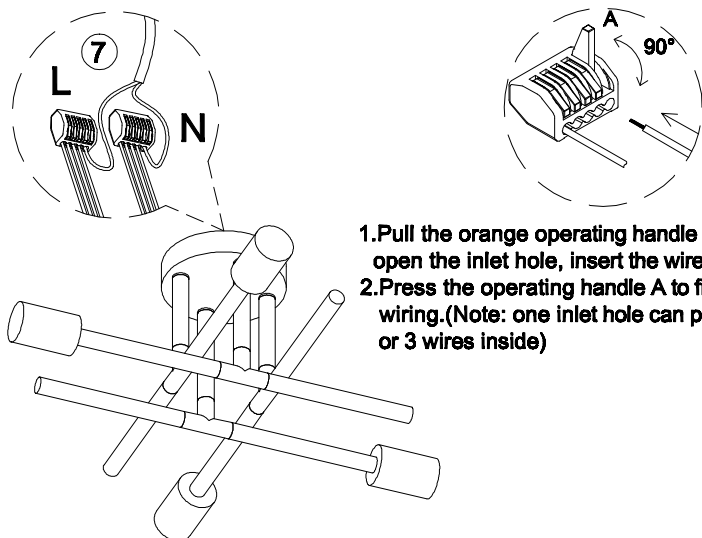
2.Rotate to install the tube ③ to the light arm.



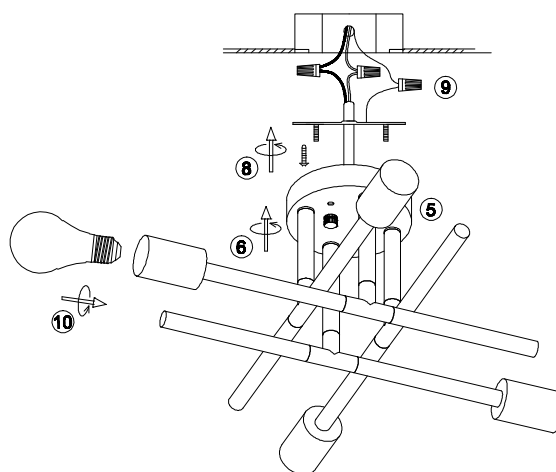
3.Let the wire of light arms ① go through the canopy ⑤, fixed arm ① to the canopy ⑤ with lock nut & teeth lock washer ④.



4.Let the wire of light arms ② go through the canopy ⑤, fixed arm ② to the canopy ⑤ with lock nut & teeth lock washer ④.



5.Connect all the wires by parallel with connectors ⑦(all live line-L use one connector, and neutral Line-N use another connector).



6.Install the bracket to the ceiling junction box with screw ⑧.

7.Connect the wire to your homeline with cap connector ⑨.

8.Install the light fixture to the bracket with cap nuts ⑥.

9.Install the bulbs ⑩.

**X0090-4**

Please read carefully before installation!!!

Note : Please make sure that the electricity is powered off during installation !

Only a professional electrician should install this kind of product !